

ROUTE NO.	SECTION	COUNTY	SHEET NO.	SHEET	SHEET NO. S-31
F. & I. NO./A	2062-2-2	LAKE COUNTY, INDIANA	452	263	
DRAWN BY		FED. AID PROJECT		CONTRACT NO. 62113 INDOT DES. NO. 0100987	

CONTRACT NO. 62113 INDOT DES. NO. 0100987

GENERAL NOTES

The strip seal shall be made continuous and shall have a minimum thickness of 5 mm. The configuration of the strip seal shall match the configuration of the Locking Edge Rails.

The height and thickness of the Locking Edge Rails shown are minimum dimensions. The actual configuration of the Locking Edge Rails and matching strip seal may vary from manufacturer to manufacturer. Flanged edge rails will not be allowed.

Locking Edge Rails may be spliced at slope discontinuities and stage construction joints.

The manufacturer's recommended installation methods shall be followed.

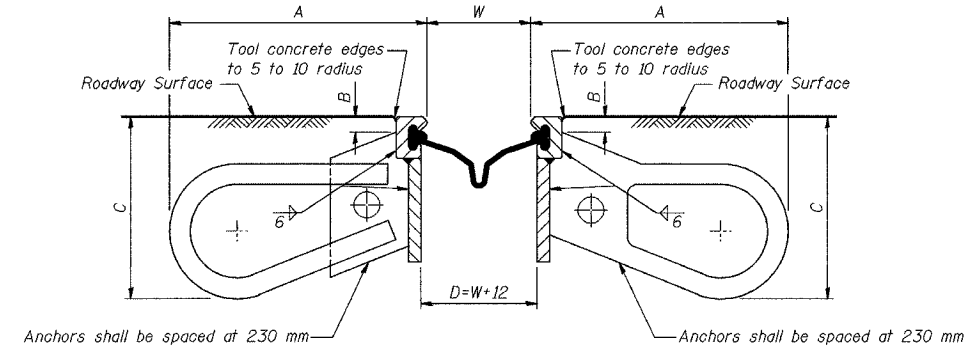
All dimensions are in millimeters (mm) except as noted.

JOINT SETTING TABLE

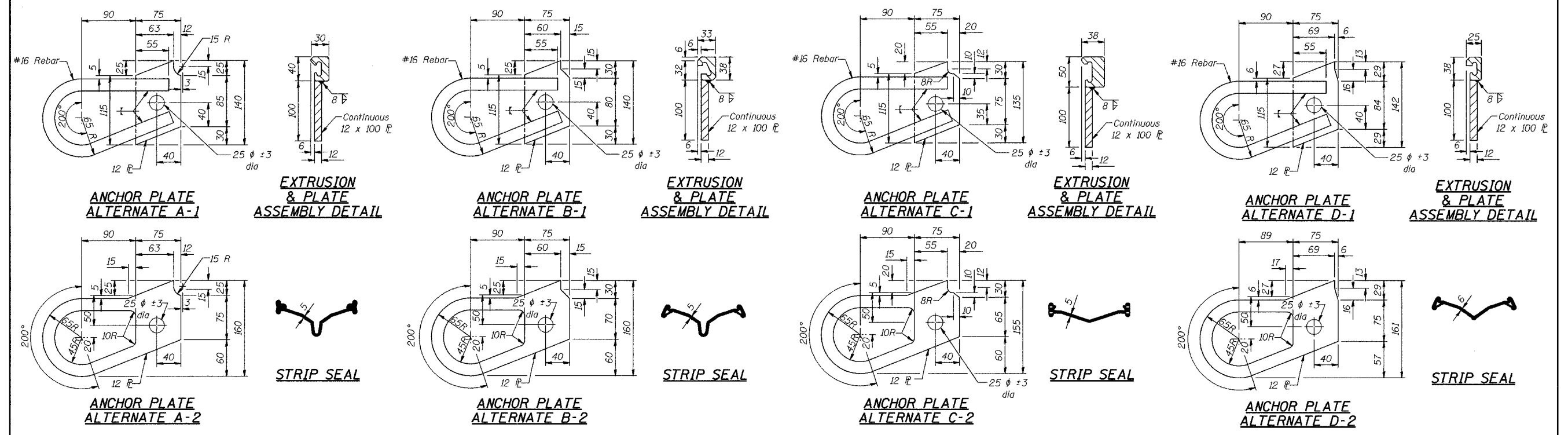
Ambient Temperature °C	DIMENSION W		
	Expansion Length		
	30 m-60 m	60 m-90 m	90 m-120 m
50°	54	33	13
40°	62	44	29
25°	68	55	43
15°	76	67	57
5°	84	78	71
-5°	90	89	86
-15°	98	100	102

DIMENSIONS

ALTERNATES	A	B	C
A-1	248	25	185
A-2	248	25	185
B-1	248	25	185
B-2	248	25	185
C-1	248	30	185
C-2	248	30	185

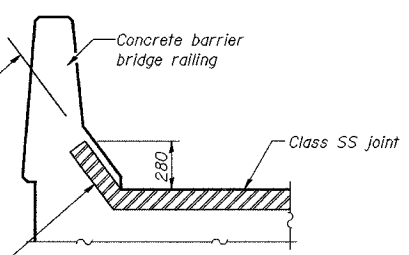


INSTALLATION DETAIL

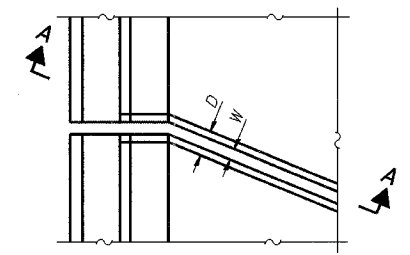


The joint shall be placed parallel to the lower sloped face of the rail with a maximum 75 depth to the top of the extrusion.

The extrusion and plate assemblies with anchors shall be miter cut and shop spliced at this location. A miter cut, vulcanized shop splice will be required in the strip seal at this location.



SECTION A-A



PLAN

PLAN DIMENSIONS AT 10° C

Location	W	D
W Abut	73	85
Pier 3	73	85
E. Abut	80	92

BILL OF MATERIAL

Item	Unit	Total
Structural Expansion Joint, SS	m	43.7

DESIGNED	BHS
CHECKED	KFA
DRAWN	MJB
CHECKED	GSP

ILLINOIS DEPARTMENT OF TRANSPORTATION
 F.A.I. ROUTE 80/94 (BORMAN EXPRESSWAY)
 OVER LITTLE CALUMET RIVER & N.I.C.T.D. R.O.W.

EXPANSION JOINT DETAILS
 SECTION 2626.2-R-1
 LAKE COUNTY, INDIANA
 STATION 8+470.000
 STRUCTURE NO. I-80-1-8460 (EB & WB)
 DATE 07/04 (016-1003 & 016-1004)

AMERICAN
 CONSULTING ENGINEERS