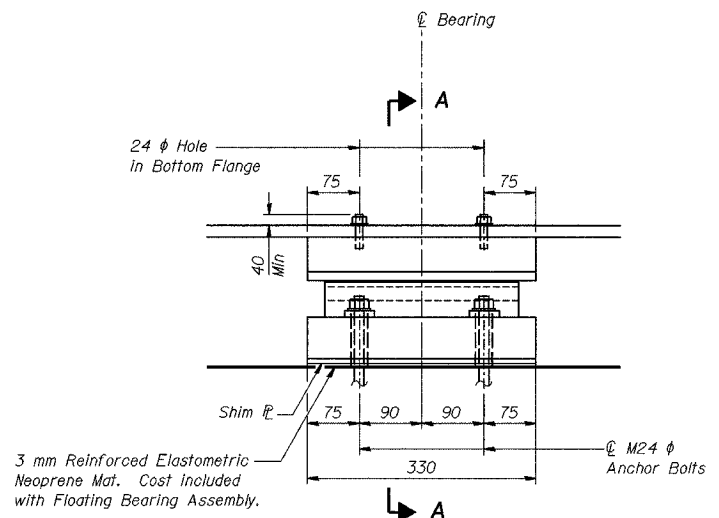
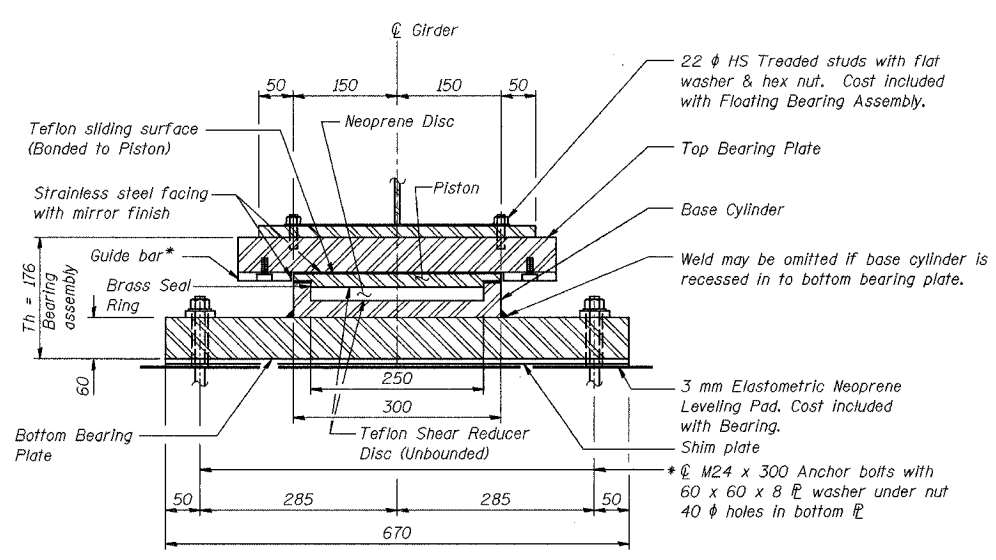


ROUTE NO.	SECTION	COUNTY	SHEET NO.	SHEET TOTAL	SHEET NO. S-42
F.A.I.	2626.2-R-2	LAKE COUNTY, INDIANA	452	274	72 SHEETS
ILLINOIS FEDERAL PROJECT					

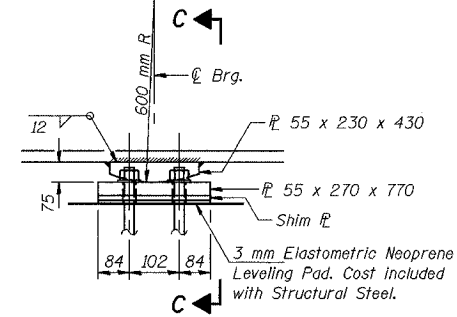
CONTRACT NO. 62113 INDOT DES. NO. 0100987



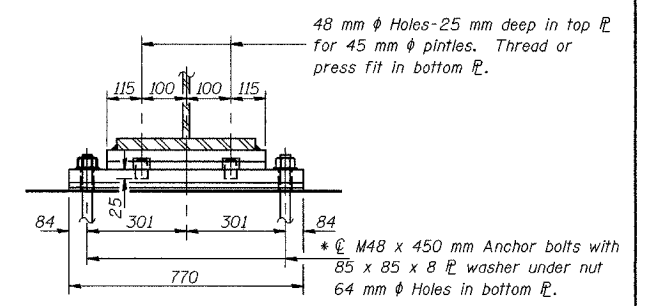
**ELEVATION**



**SECTION A-A**

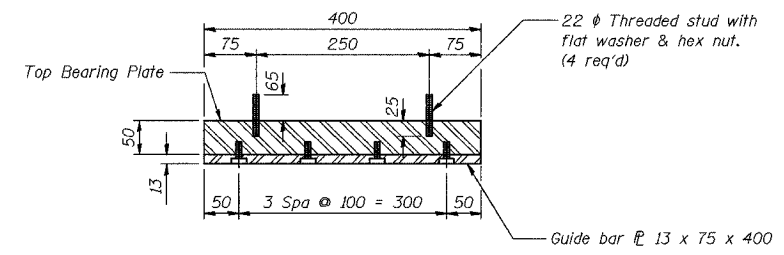


**ELEVATION AT PIER**

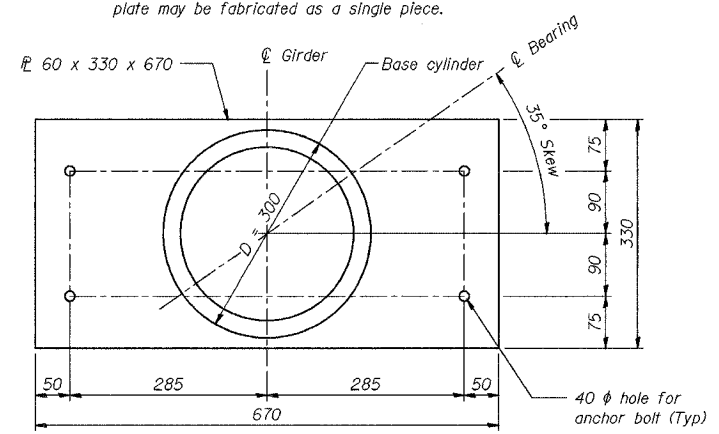


**SECTION C-C**

**FIXED BEARING AT PIER 2**

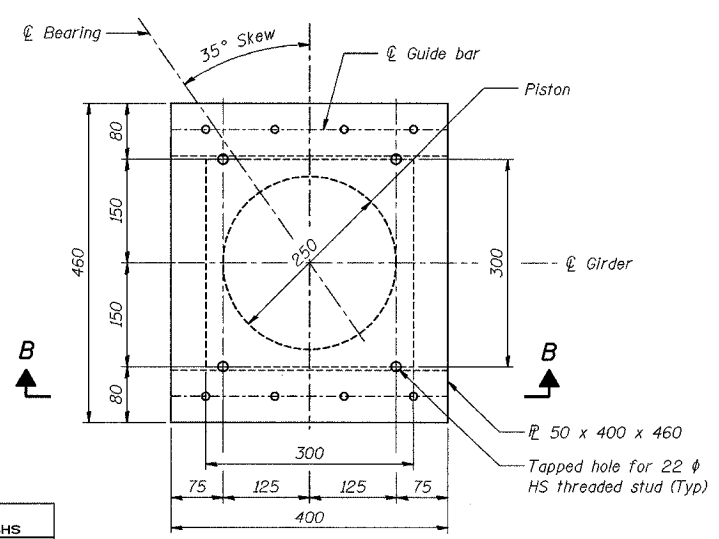


**SECTION B-B**

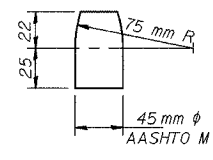


**BOTTOM BEARING PLATE AND CYLINDER PLAN**

Max expansion length = 30 m  
 Total dead load + live load without impact = 1157 kN  
 Lateral load = 231 kN  
 Rotation capacity = 0.025 radians



**TOP BEARING PLATE AND PISTON PLAN**



**PINTLE**

Notes: Anchor bolts at fixed bearings may be built into the masonry. See Sheet S-47 for Anchor Bolt Installation. All dimensions are in millimeters (mm) except as noted.

**BILL OF MATERIAL**

Item	Unit	Total
* Furnishing Floating Bearings, Guided Expansion, 1250 kN	Each	28

DESIGNED	BHS
CHECKED	KFA
DRAWN	MJB
CHECKED	GSP

**\* FURNISHING BEARINGS AND ANCHOR BOLTS FOR BEARINGS ERECTED IN PHASE 3 ARE NOT INCLUDED IN THIS CONTRACT**

ILLINOIS DEPARTMENT OF TRANSPORTATION  
 F.A.I. ROUTE 80/94 (BORMAN EXPRESSWAY)  
 OVER LITTLE CALUMET RIVER & N.I.C.T.D. R.O.W.

**BEARING DETAILS (1 OF 5)**  
**SECTION 2626.2-R-1**  
**LAKE COUNTY, INDIANA**  
**STATION 8+470.000**  
**STRUCTURE NO. I-80-1-8460 (EB & WB)**  
 DATE 07/04 (016-1003 & 016-1004)

**AMERICAN**  
 CONSULTING ENGINEERS