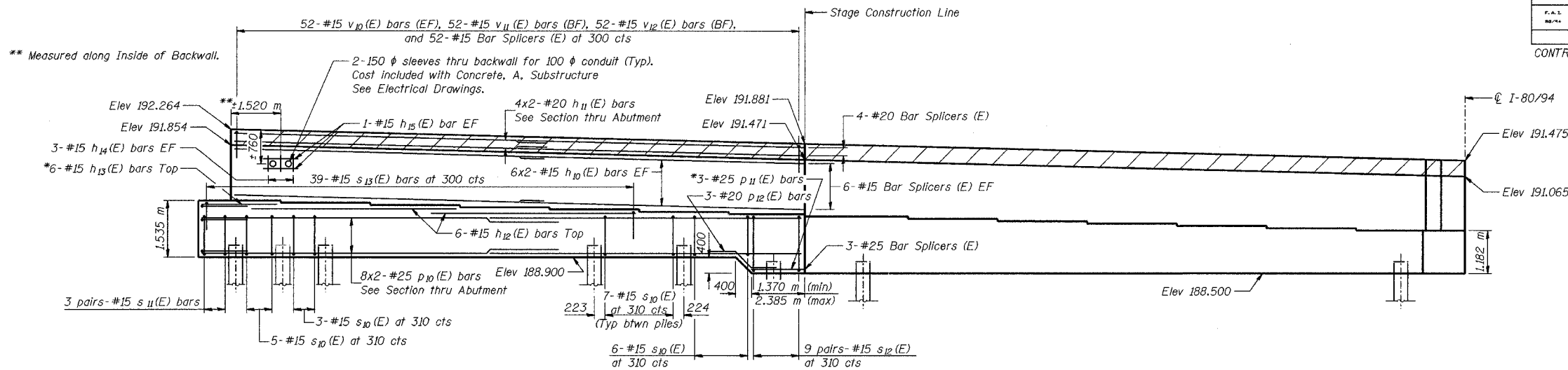
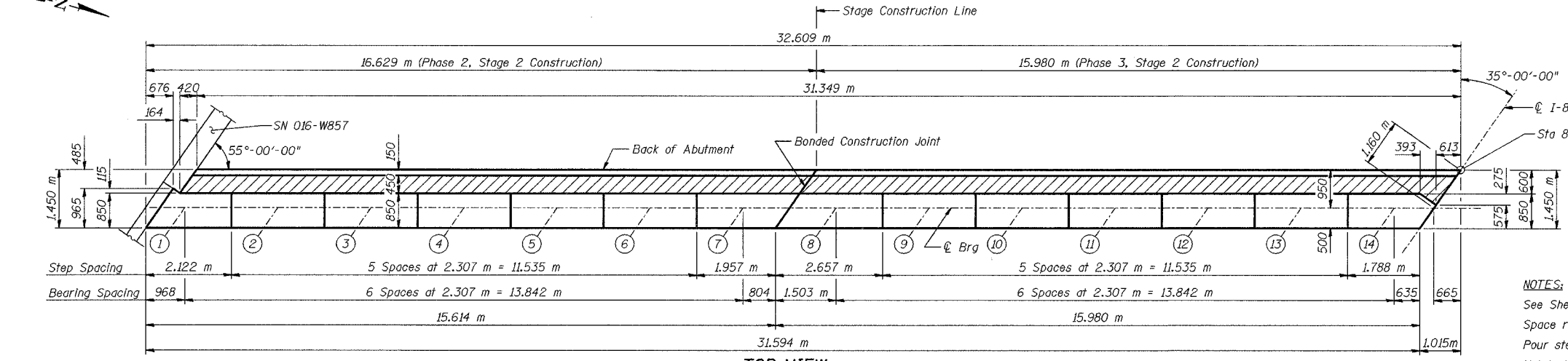
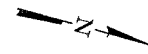


ROUTE NO.	SECTION	COUNTY	SHEET	SHEET NO. S-48
F.A.I. NO./A	2626.2-R-1	LAKE COUNTY, INDIANA	452 280	72 SHEETS
BALDWIN	FED. AID PROJECT			

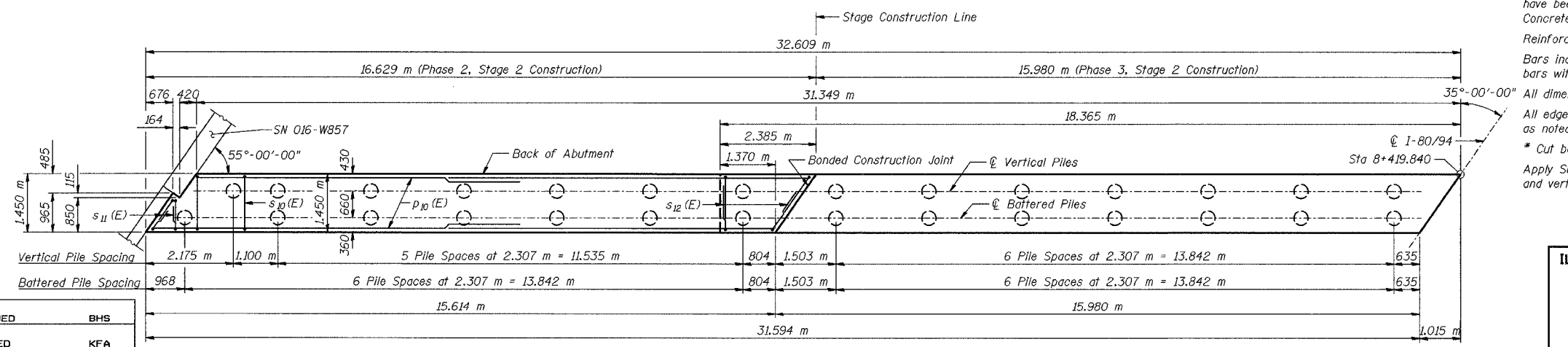
CONTRACT NO. 62113 INDOT DES. NO. 0100987



**ELEVATION**



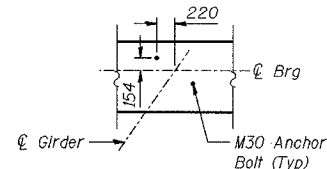
**TOP VIEW**



**PLAN-PILE CAP**

**BEARING SEAT ELEVATIONS**

Girder	Seat Elevation
14	189.682
13	189.741
12	189.800
11	189.859
10	189.917
9	189.975
8	190.034
7	190.092
6	190.149
5	190.207
4	190.264
3	190.321
2	190.379
1	190.435



**ANCHOR BOLT LAYOUT**

**LEGEND**

EF - Each Face  
BF - Back Face

**MINIMUM BAR LAPS**

#15 bars = 640  
#20 bars = 790  
#25 bars = 1320

**NOTES:**  
See Sheet No S-50 for abutment details and Bill of Material. Space reinforcement in cap to miss anchor bolts. Pour steps monolithically with cap. Hatched area to be poured after superstructure forms have been removed. Quantity of concrete included with Concrete, C, Superstructure. Reinforcement bars designated (E) shall be epoxy coated. Bars indicated thus 20 x 3-#15 etc. indicates 20 lines of bars with 3 lengths per line. All dimensions are in millimeters (mm) except as noted. All edges shall have standard 20 mm chamfers except as noted. \* Cut bars to fit in field. Apply Surface Seal to top surface of abutment seat and vertical faces of steps.

DESIGNED	BHS
CHECKED	KFA
DRAWN	MJB
CHECKED	GSP

**PHASE 3 FOR INFORMATION ONLY**

**ILLINOIS DEPARTMENT OF TRANSPORTATION**  
F.A.I. ROUTE 80/94 (BORMAN EXPRESSWAY)  
OVER LITTLE CALUMET RIVER & N.I.C.T.D. R.O.W.

**WEST ABUTMENT - EASTBOUND**  
SECTION 2626.2-R-1  
LAKE COUNTY, INDIANA  
STATION 8+470.000  
STRUCTURE NO. I-80-1-8460 (EB & WB)  
DATE 07/04 (016-1003 & 016-1004)

**AMERICAN**  
CONSULTING ENGINEERS