

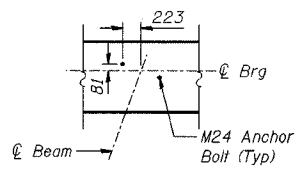
ROUTE NO.	SECTION	COUNTY	SHEET NO.	TOTAL SHEETS
F.A.I. 80/94	2626.2-R-1	LAKE COUNTY, INDIANA	452	283
ILLINOIS		FED. AID PROJECT		

SHEET NO. S-51
72 SHEETS

CONTRACT NO. 62113 INDOT DES. NO. 0100987

BEARING SEAT ELEVATIONS

Beam	Seat Elevation
14	190.216
13	190.257
12	190.299
11	190.340
10	190.381
9	190.422
8	190.463
7	190.505
6	190.546
5	190.587
4	190.628
3	190.668
2	190.709
1	190.750



ANCHOR BOLT LAYOUT

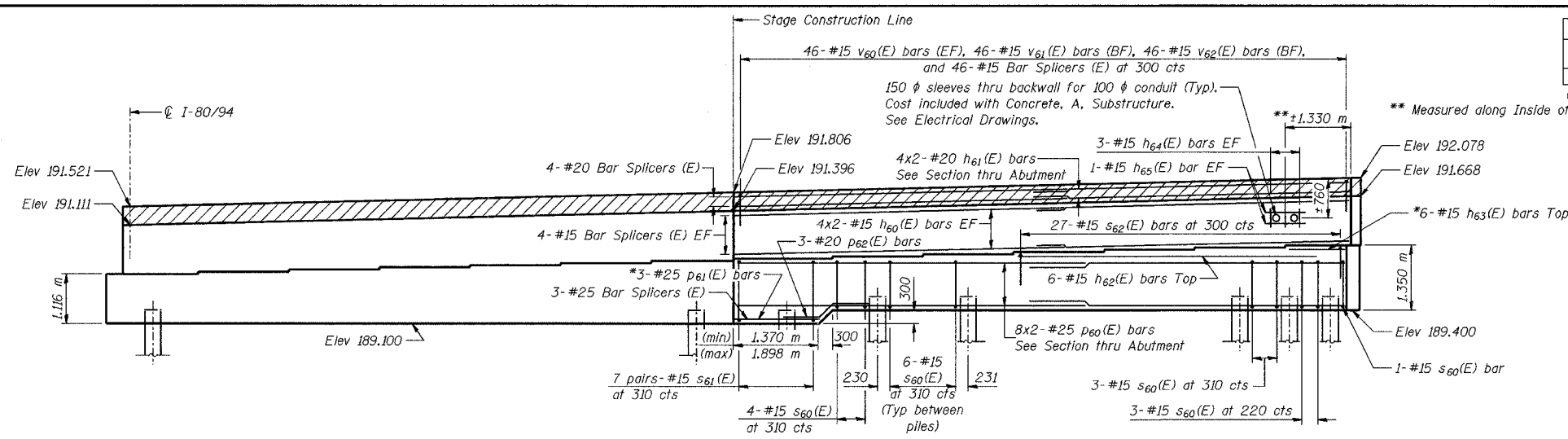
LEGEND

EF - Each Face
BF - Back Face

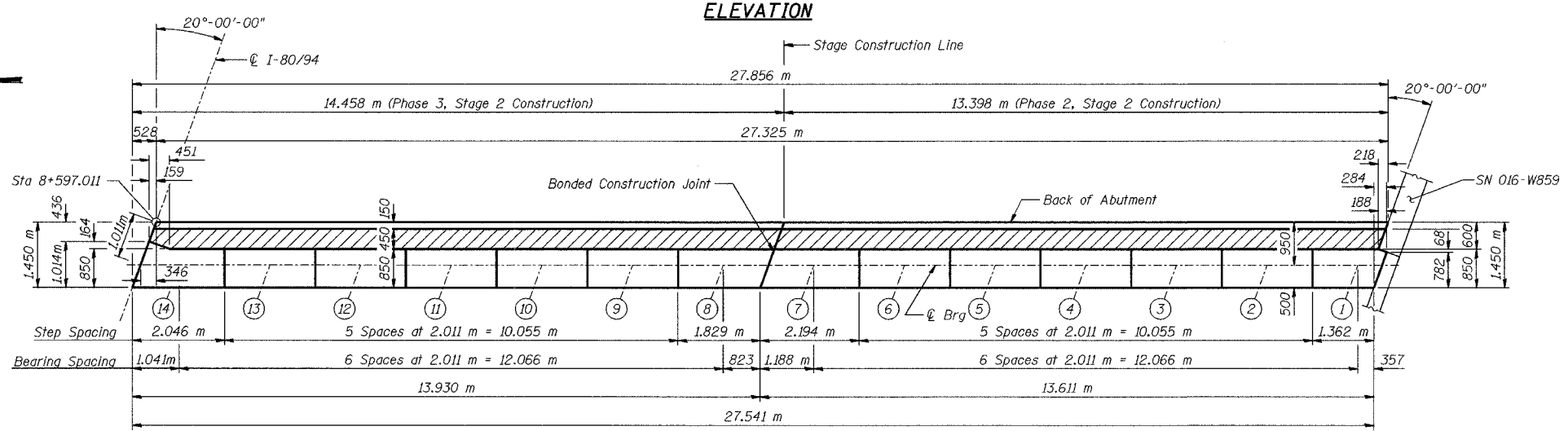
MINIMUM BAR LAPS

#15 bars = 640
#20 bars = 790
#25 bars = 1320

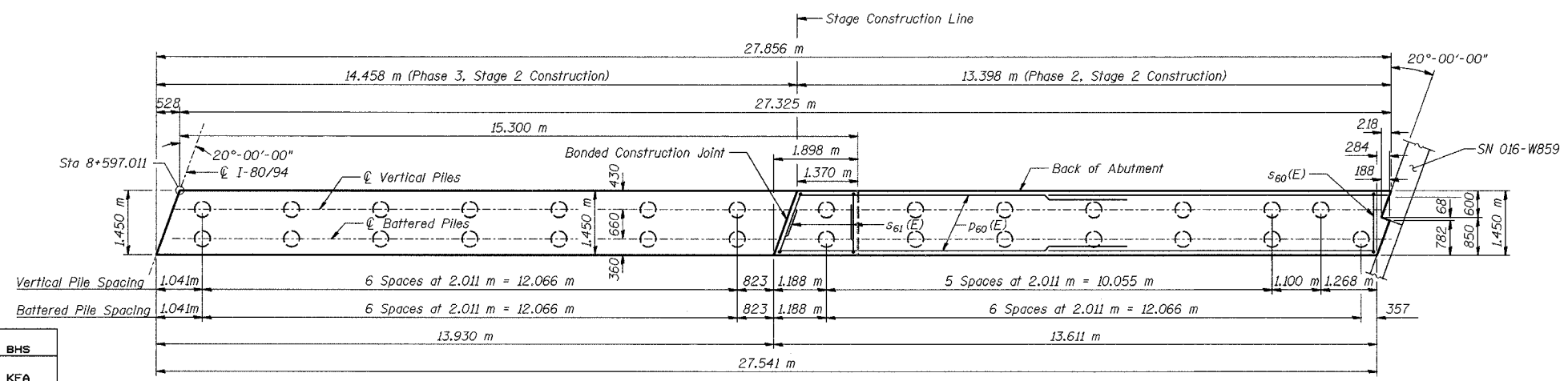
- NOTES:**
- See Sheet No S-53 for abutment details and Bill of Material.
 - Space reinforcement in cap to miss anchor bolts.
 - Pour steps monolithically with cap.
 - Hatched area to be poured after superstructure forms have been removed. Quantity of concrete included with Concrete, C, Superstructure.
 - Reinforcement bars designated (E) shall be epoxy coated.
 - Bars indicated thus 20 x 3-#15 etc. indicates 20 lines of bars with 3 lengths per line.
 - All dimensions are in millimeters (mm) except as noted.
 - All edges shall have standard 20 mm chamfers except as noted.
 - * Cut bars to fit in field.
 - Apply Surface Seal to top surface of abutment seat and vertical faces of steps.



ELEVATION



TOP VIEW



PLAN-PILE CAP

DESIGNED	BHS
CHECKED	KFA
DRAWN	MJB
CHECKED	GSP

PHASE 3 FOR INFORMATION ONLY

ILLINOIS DEPARTMENT OF TRANSPORTATION
F.A.I. ROUTE 80/94 (BORMAN EXPRESSWAY)
OVER LITTLE CALUMET RIVER & N.I.C.T.D. R.O.W.
EAST ABUTMENT - EASTBOUND
SECTION 2626.2-R-1
LAKE COUNTY, INDIANA
STATION 8+470.000
STRUCTURE NO. I-80-1-8460 (EB & WB)
DATE 07/04 (016-1003 & 016-1004)