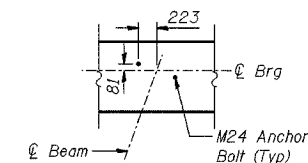


ROUTE NO.	SECTION	COUNTY	SHEETS	SHEET	SHEET NO. S-52
F.A.I.	2626.2-R-1	LAKE COUNTY, INDIANA	452	284	72 SHEETS
BLANKS					INDOT DES. NO. 0100987
CONTRACT NO. 62113					

**BEARING SEAT ELEVATIONS**

Beam	Seat Elevation
28	190.248
27	190.290
26	190.332
25	190.374
24	190.416
23	190.458
22	190.499
21	190.541
20	190.583
19	190.624
18	190.666
17	190.707
16	190.749
15	190.790



**ANCHOR BOLT LAYOUT**

**LEGEND**

EF - Each Face  
BF - Back Face

**MINIMUM BAR LAPS**

#15 bars = 640  
#20 bars = 790  
#25 bars = 1320

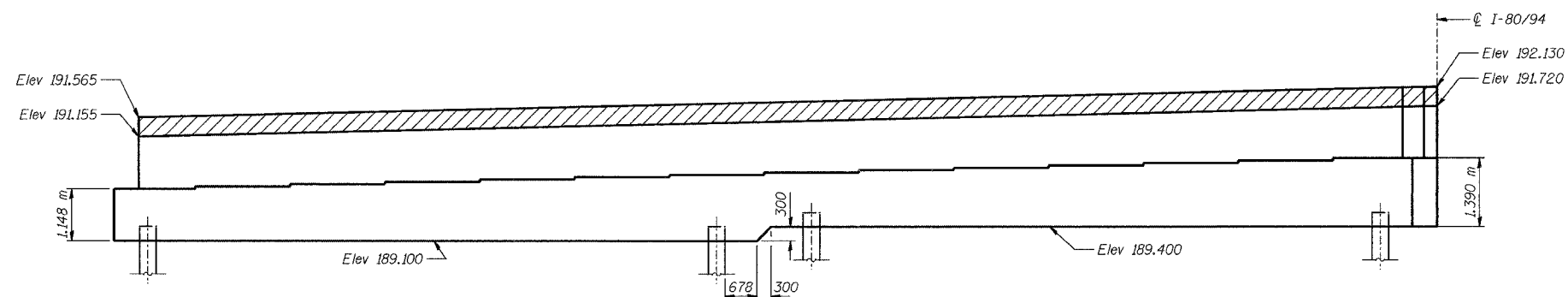
**NOTES:**

See Sheet No S-53 for abutment details and Bill of Material.  
Space reinforcement in cap to miss anchor bolts.  
Pour steps monolithically with cap.  
Hatched area to be poured after superstructure forms have been removed. Quantity of concrete included with Concrete, C, Superstructure.  
Reinforcement bars designated (E) shall be epoxy coated.  
Bars indicated thus 20 x 3-#15 etc. indicates 20 lines of bars with 3 lengths per line.  
All dimensions are in millimeters (mm) except as noted.  
All edges shall have standard 20 mm chamfers except as noted.  
Apply Surface Seal to top surface of abutment seat and vertical faces of steps.

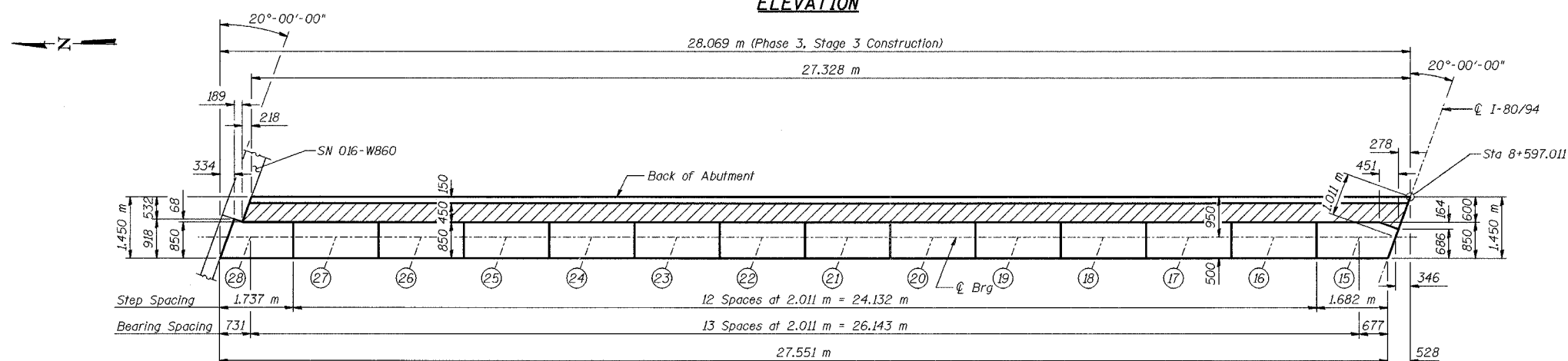
ILLINOIS DEPARTMENT OF TRANSPORTATION  
F.A.I. ROUTE 80/94 (BORMAN EXPRESSWAY)  
OVER LITTLE CALUMET RIVER & N.I.C.T.D. R.O.W.

**EAST ABUTMENT - WESTBOUND**  
**SECTION 2626.2-R-1**  
**LAKE COUNTY, INDIANA**  
**STATION 8+470.000**  
**STRUCTURE NO. I-80-1-8460 (EB & WB)**  
DATE 07/04 (016-1003 & 016-1004)

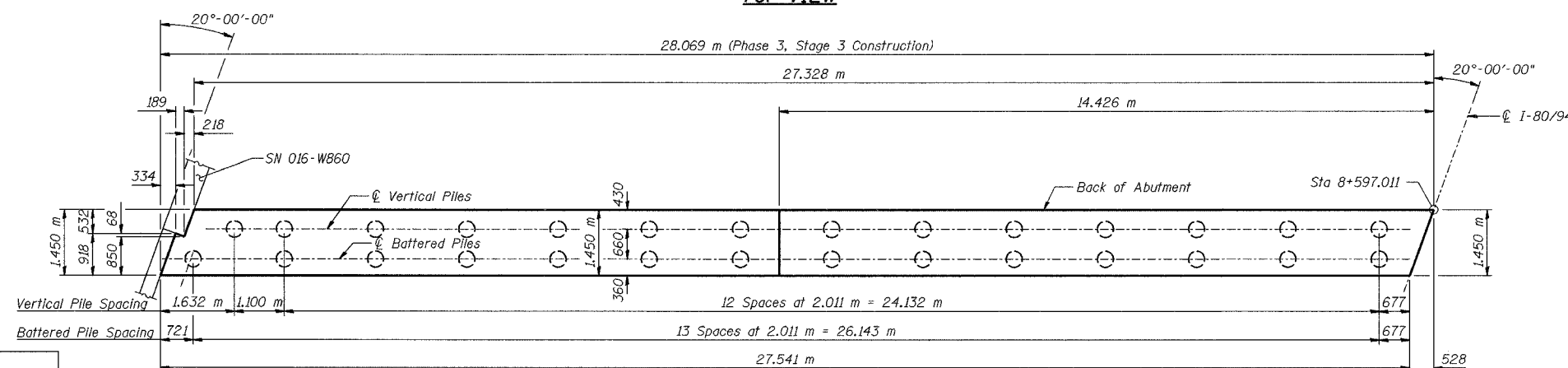
**AMERICAN**  
CONSULTING ENGINEERS



**ELEVATION**



**TOP VIEW**



**PLAN-PILE CAP**

DESIGNED	BHS
CHECKED	KFA
DRAWN	MJB
CHECKED	GSP

**FOR INFORMATION ONLY**