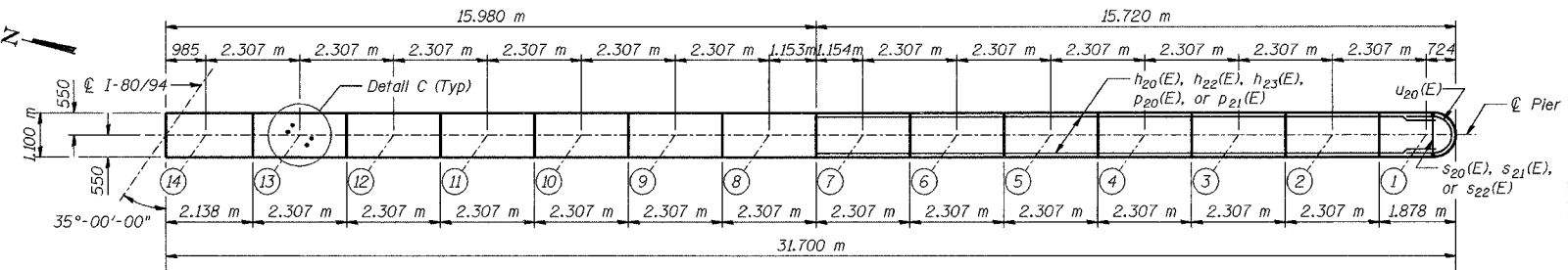


BEARING SEAT ELEVATIONS

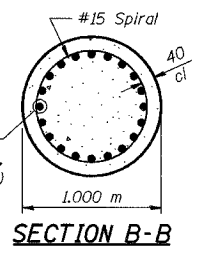
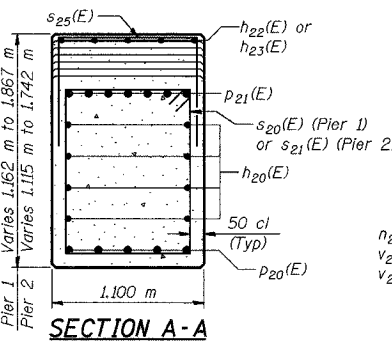
Girder	Pier 1	Pier 2
14	189.911	190.119
13	189.966	190.169
12	190.021	190.218
11	190.076	190.266
10	190.131	190.315
9	190.186	190.363
8	190.240	190.412
7	190.294	190.460
6	190.348	190.508
5	190.402	190.556
4	190.456	190.604
3	190.509	190.651
2	190.563	190.698
1	190.616	190.746

ROUTE NO.	SECTION	COUNTY	SHEET NO.	TOTAL SHEETS
F.A.I. 80/94	2626.2-R-1	LAKE COUNTY, INDIANA	452	286

CONTRACT NO. 62113 INDOT DES. NO. 0100987

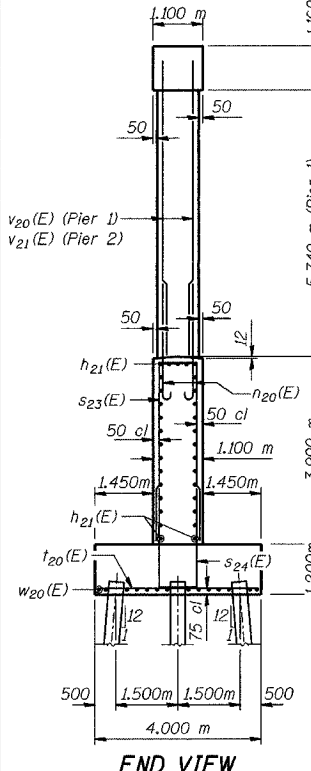


TOP PLAN



SECTION A-A

SECTION B-B



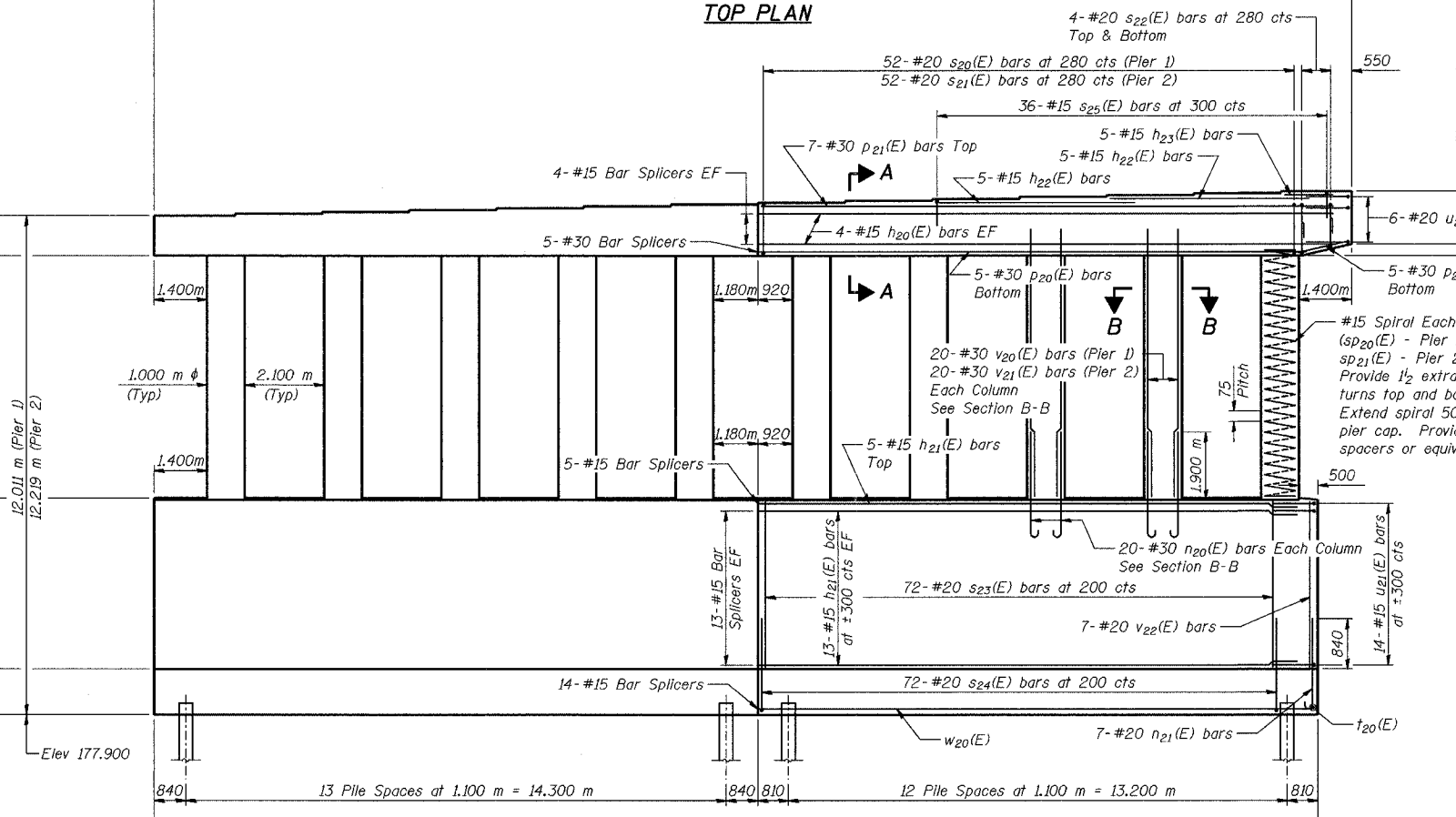
END VIEW

PILE DATA

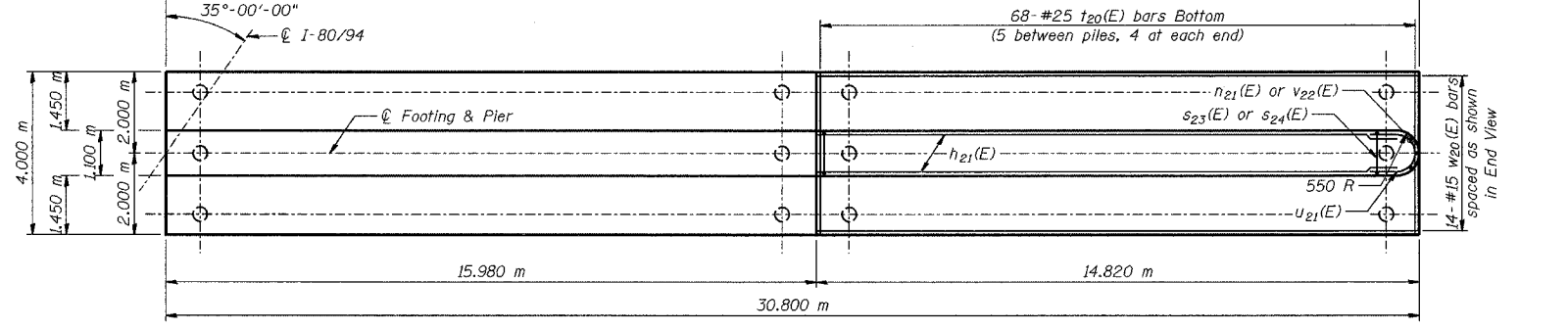
Type - 356 ϕ Metal Shell
 Capacity - 500 kN
 Est Length - 16.9 m
 No Req'd - 160 Total*
 Test Piles - 1 per Pier

* Phase 2, Stage 2: 38 per Pier
 Phase 3, Stage 2: 42 per Pier

DESIGNED	BHS
CHECKED	KFA
DRAWN	MJB
CHECKED	GSP

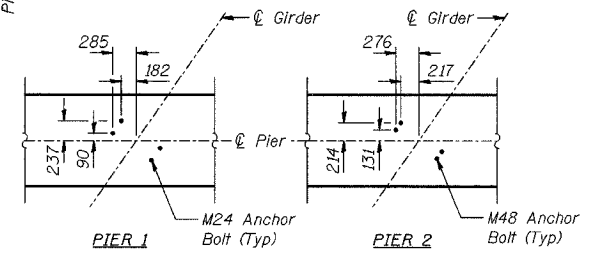


ELEVATION (Looking East)



FOOTING PLAN

PHASE 3 FOR INFORMATION ONLY



DETAIL C ANCHOR BOLT LAYOUT

NOTES:
 See Sheet No S-60 for Bill of Material.
 Space reinforcement in cap to miss anchor bolts.
 Pour steps monolithically with cap.
 Reinforcement bars designated (E) shall be epoxy coated.
 All dimensions are in millimeters (mm) except as noted.

LEGEND
 EF - Each Face

MINIMUM BAR LAPS

#15 bars	= 640
#20 bars	= 790
#25 bars	= 1320
#30 bars	= 1850

ILLINOIS DEPARTMENT OF TRANSPORTATION
 F.A.I. ROUTE 80/94 (BORMAN EXPRESSWAY)
 OVER LITTLE CALUMET RIVER & N.I.C.T.D. R.O.W.

PIERS 1 AND 2 - EASTBOUND
SECTION 2626.2-R-1
LAKE COUNTY, INDIANA
STATION 8+470.000
STRUCTURE NO. I-80-1-8460 (EB & WB)
 DATE 07/04 (016-1003 & 016-1004)

AMERICAN CONSULTING ENGINEERS