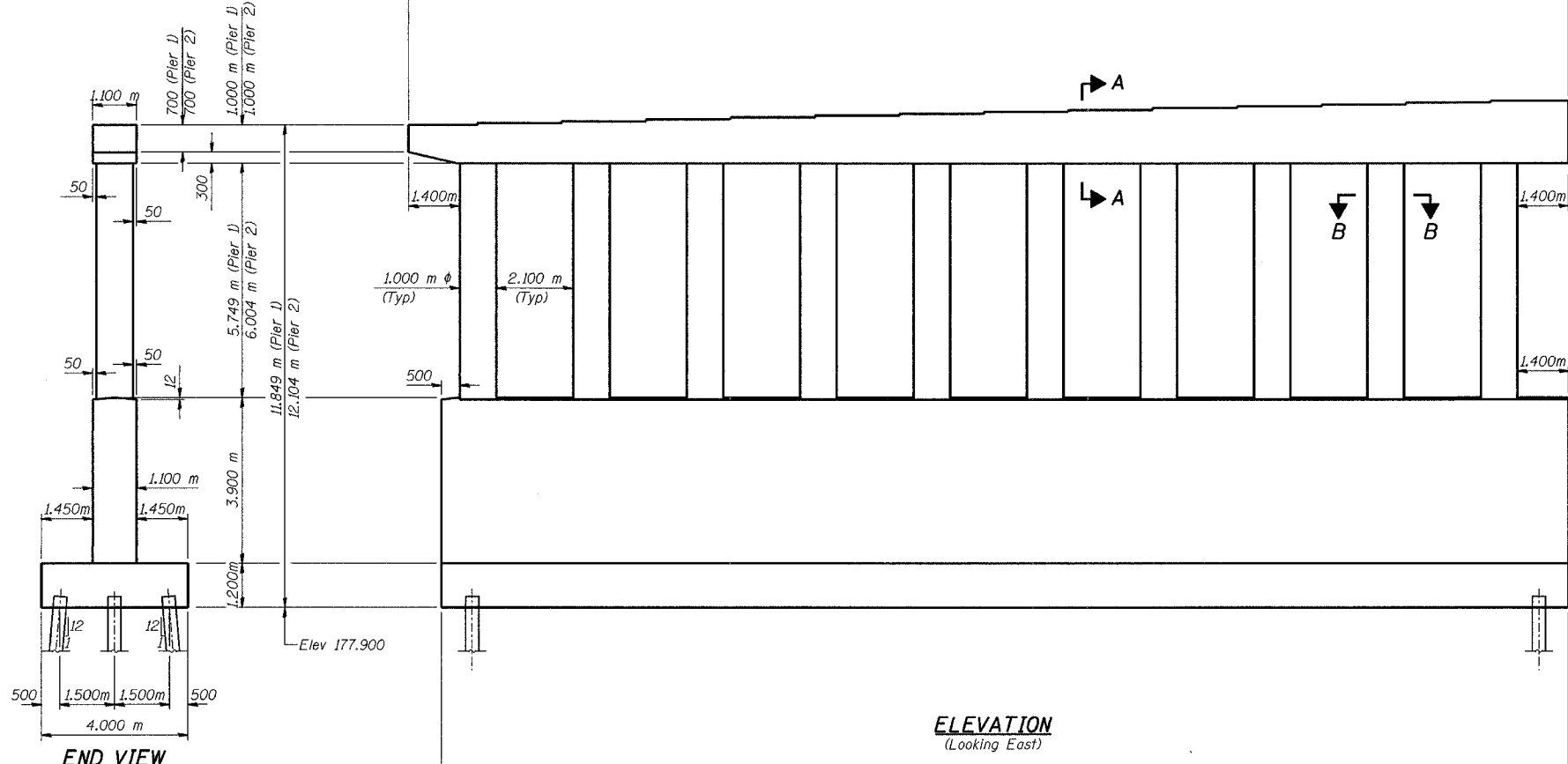
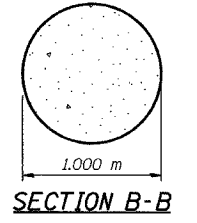
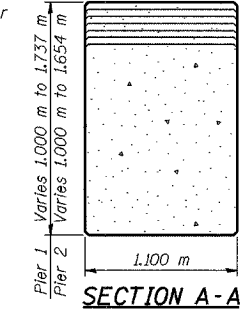
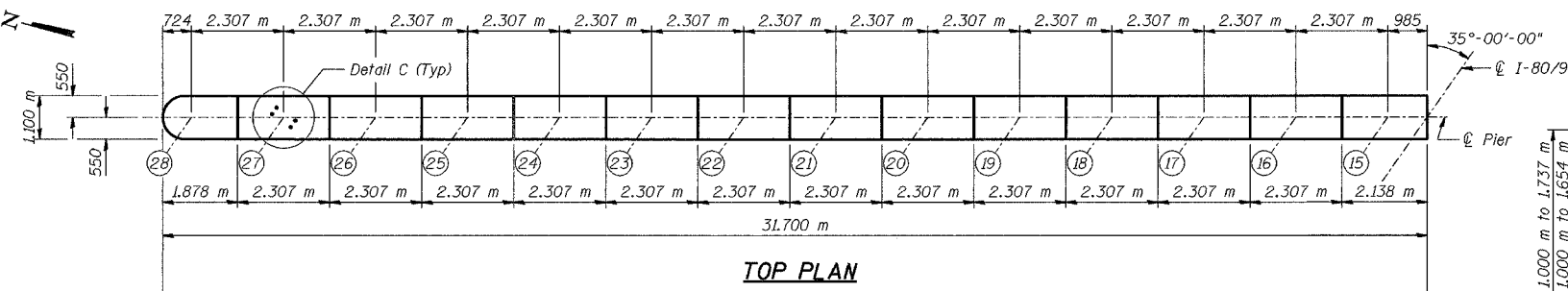


BEARING SEAT ELEVATIONS

Girder	Pier 1	Pier 2
28	189.749	190.004
27	189.807	190.055
26	189.864	190.106
25	189.922	190.157
24	189.979	190.208
23	190.036	190.258
22	190.093	190.308
21	190.150	190.359
20	190.206	190.409
19	190.263	190.459
18	190.319	190.509
17	190.375	190.559
16	190.430	190.608
15	190.486	190.658

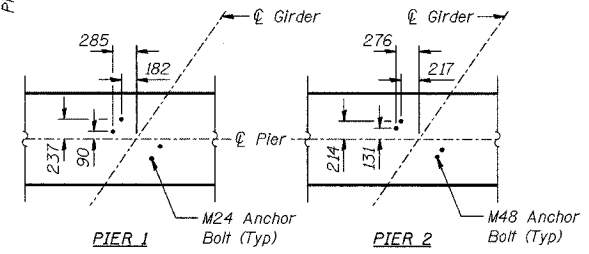
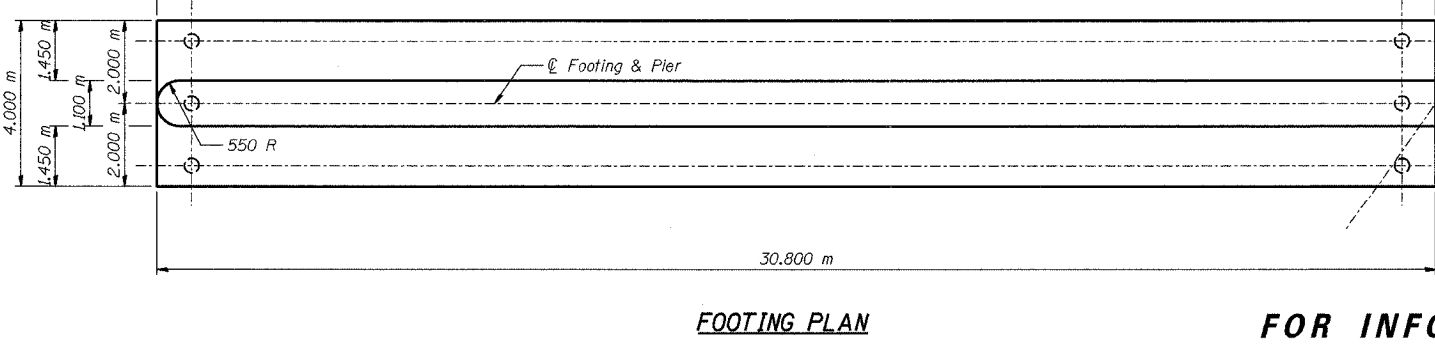
ROUTE NO.	SECTION	COUNTY	SHEETS	SHEET	SHEET NO. S-55
F.A.I. 80-94	2626.2-R-1	LAKE COUNTY, INDIANA	452	287	72 SHEETS
ILLINOIS FEDERAL PROJECT					CONTRACT NO. 62113 INDOT DES. NO. 0100987



PILE DATA
 Type - 356 ϕ Metal Shell
 Capacity - 500 kN
 Est Length - 16.9 m
 No Req'd - xx Total*
 Test Piles - 0

* Phase 3, Stage 3: xx per Pier

DESIGNED	BHS
CHECKED	KFA
DRAWN	MJB
CHECKED	GSP



DETAIL C ANCHOR BOLT LAYOUT

NOTES:
 See Sheet No S-60 for Bill of Material.
 Space reinforcement in cap to miss anchor bolts.
 Pour steps monolithically with cap.
 Reinforcement bars designated (E) shall be epoxy coated.
 Bars indicated thus 20 x 3-#15 etc. indicates 20 lines of bars with 3 lengths per line.
 All dimensions are in millimeters (mm) except as noted.

LEGEND
 EF - Each Face
MINIMUM BAR LAPS
 #15 bars = 640
 #20 bars = 790
 #25 bars = 1320
 #30 bars = 1850

FOR INFORMATION ONLY

ILLINOIS DEPARTMENT OF TRANSPORTATION
 F.A.I. ROUTE 80/94 (BORMAN EXPRESSWAY)
 OVER LITTLE CALUMET RIVER & N.I.C.T.D. R.O.W.
PIERS 1 AND 2 - WESTBOUND
SECTION 2626.2-R-1
LAKE COUNTY, INDIANA
STATION 8+470.000
STRUCTURE NO. I-80-1-8460 (EB & WB)
 DATE 07/04 (016-1003 & 016-1004)
AMERICAN CONSULTING ENGINEERS