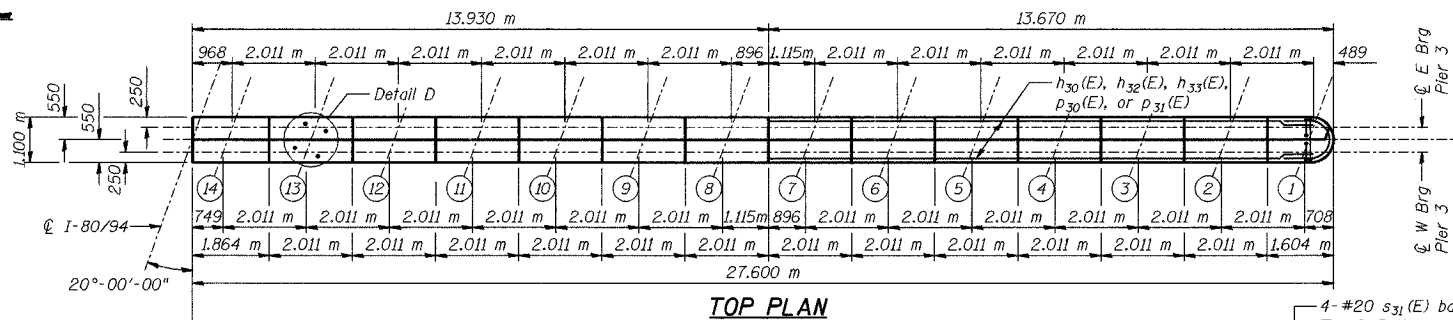
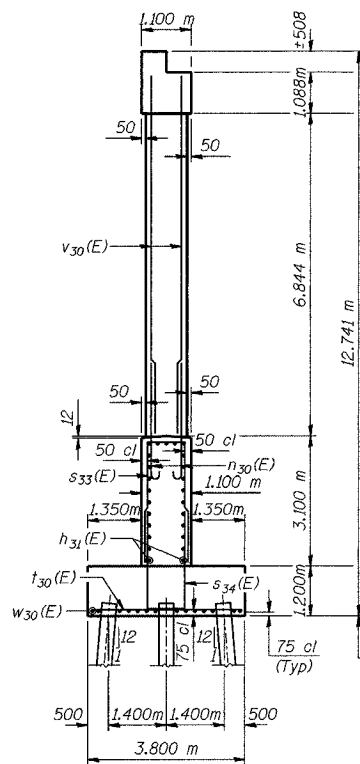


**BEARING SEAT ELEVATIONS**

Girder or Beam	Pier 3 - W Brg	Pier 3 - E Brg
14	190.132	190.641
13	190.179	190.687
12	190.225	190.733
11	190.271	190.779
10	190.317	190.825
9	190.364	190.871
8	190.410	190.918
7	190.456	190.964
6	190.502	191.010
5	190.548	191.055
4	190.594	191.101
3	190.639	191.147
2	190.685	191.193
1	190.731	191.239



**TOP PLAN**



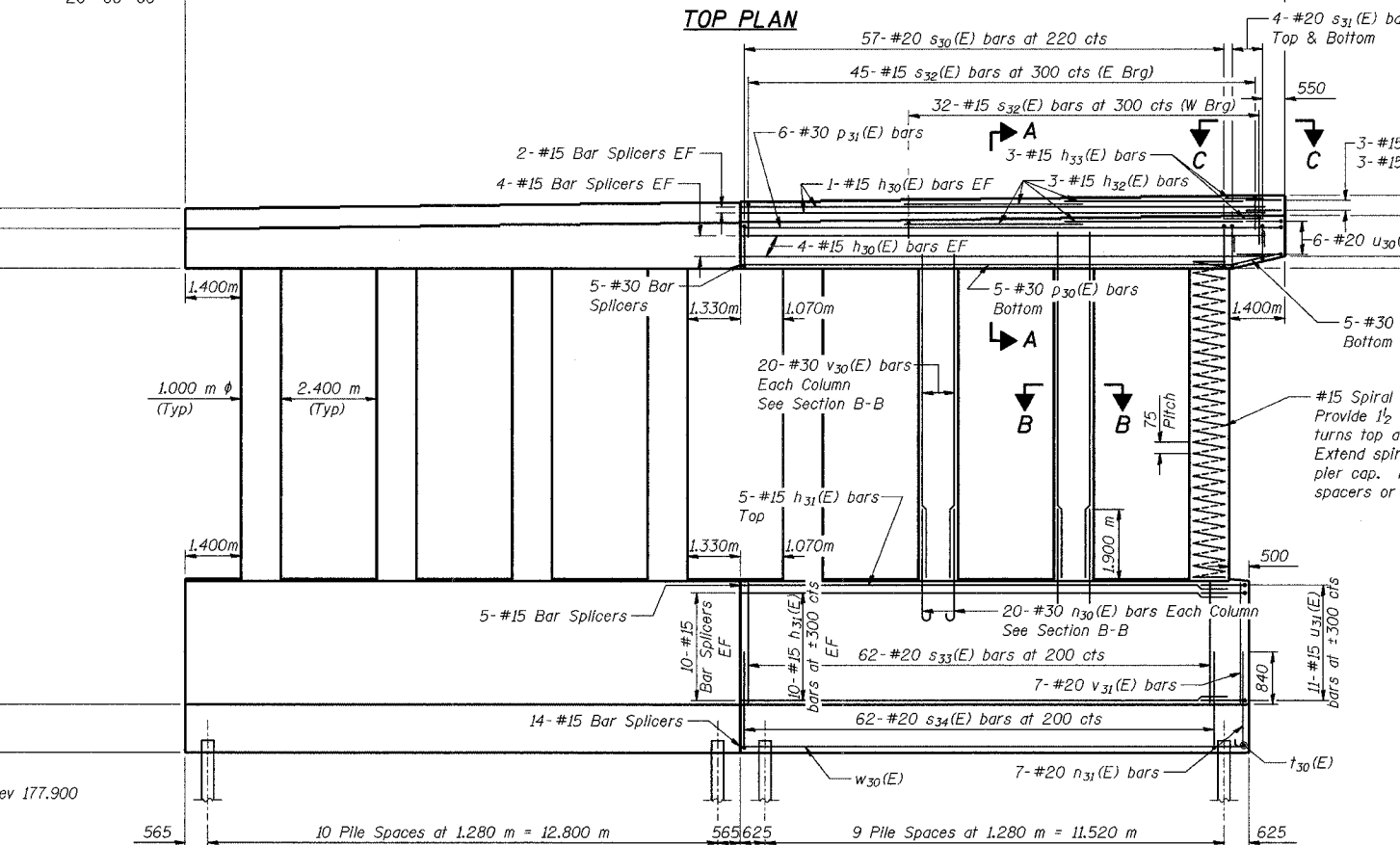
**END VIEW**

**PILE DATA**

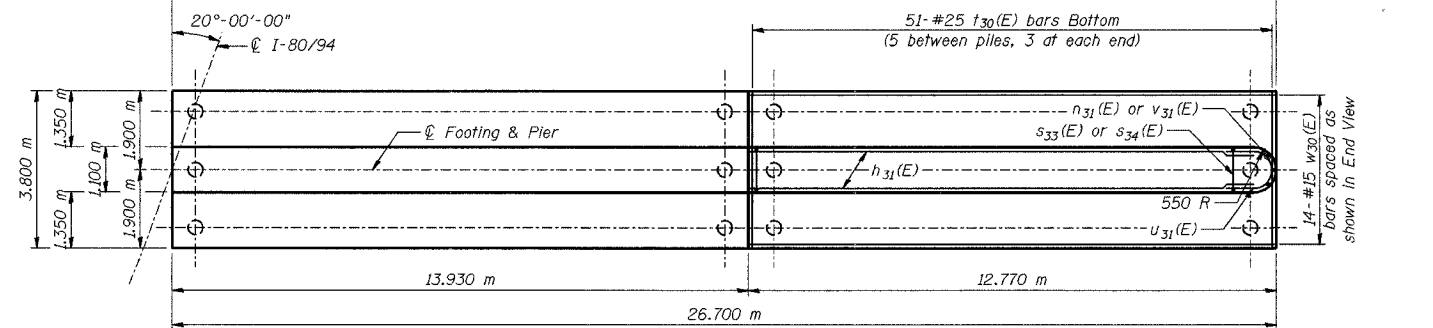
Type - 356  $\phi$  Metal Shell  
 Capacity - 500 kN  
 Est Length - 13.4 m  
 No Req'd - 62 Total\*  
 Test Piles - 1

\* Phase 2, Stage 2: 29 for Pier 3  
 Phase 3, Stage 2: 33 for Pier 3

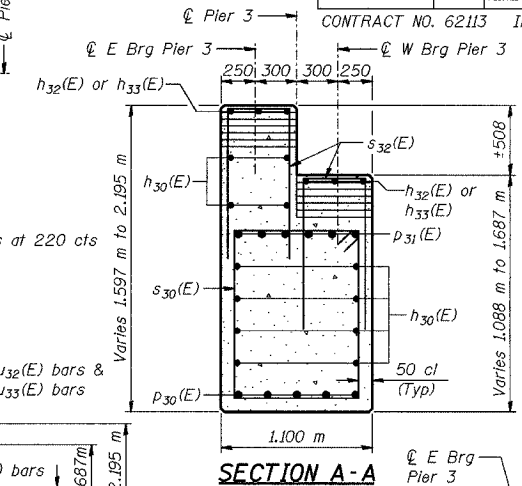
DESIGNED	BHS
CHECKED	KFA
DRAWN	MJB
CHECKED	GSP



**ELEVATION**  
(Looking East)

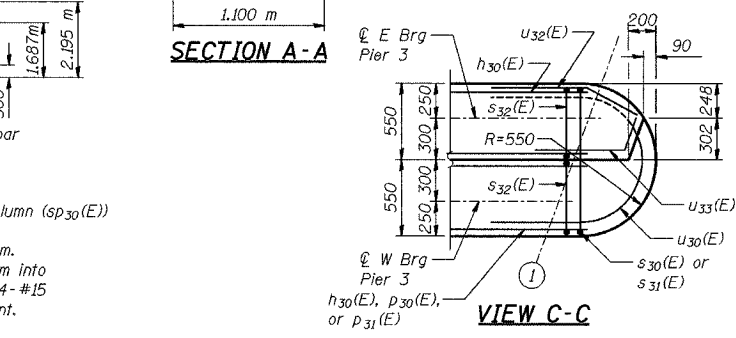


**FOOTING PLAN**

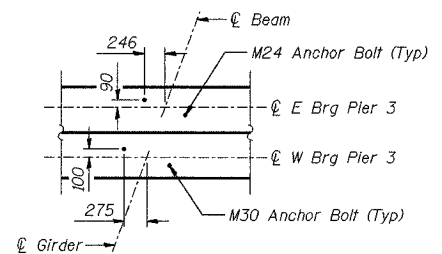


**SECTION A-A**

**SECTION B-B**



**VIEW C-C**



**DETAIL D**  
**ANCHOR BOLT LAYOUT**

**NOTES:**

- See Sheet No S-60 for Bill of Material.
- Space reinforcement in cap to miss anchor bolts.
- Pour steps monolithically with cap.
- Reinforcement bars designated (E) shall be epoxy coated.
- All dimensions are in millimeters (mm) except as noted.
- Apply Surface Seal to top surface of bearing seat and vertical faces of steps.

**LEGEND**

EF - Each Face

**MINIMUM BAR LAPS**

- #15 bars = 640
- #20 bars = 790
- #25 bars = 1320
- #30 bars = 1850

ILLINOIS DEPARTMENT OF TRANSPORTATION  
 F.A.L. ROUTE 80/94 (BORMAN EXPRESSWAY)  
 OVER LITTLE CALUMET RIVER & N.I.C.T.D. R.O.W.

**PIER 3 - EASTBOUND**  
**SECTION 2626.2-R-1**  
**LAKE COUNTY, INDIANA**  
**STATION 8+470.000**  
**STRUCTURE NO. I-80-1-8460 (EB & WB)**  
 DATE 07/04 (016-1003 & 016-1004)



**PHASE 3 FOR INFORMATION ONLY**