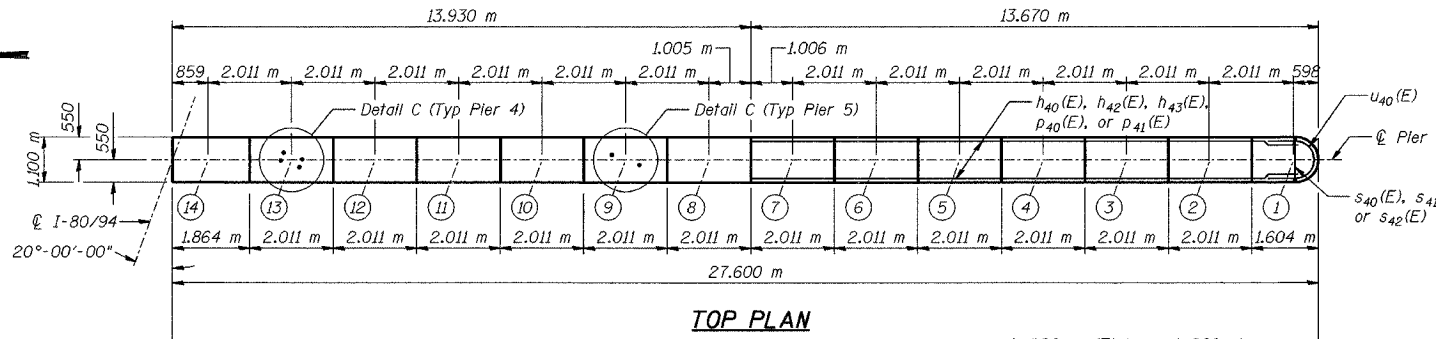


BEARING SEAT ELEVATIONS

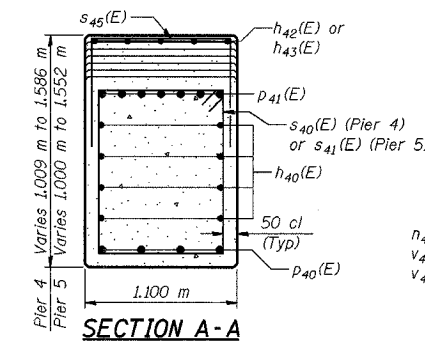
Beam	Pier 4	Pier 5
14	190.573	190.376
13	190.618	190.419
12	190.662	190.462
11	190.707	190.505
10	190.752	190.547
9	190.796	190.590
8	190.840	190.632
7	190.885	190.675
6	190.929	190.717
5	190.973	190.759
4	191.018	190.802
3	191.062	190.844
2	191.106	190.886
1	191.150	190.928

ROUTE NO.	SECTION	COUNTY	DATE	SHEET	SHEET NO.
F.A.I.	2622-R-2	LAKE COUNTY, INDIANA	452	290	72 SHEETS

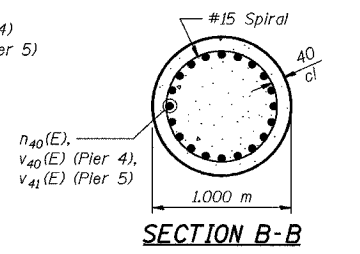
CONTRACT NO. 62113 INDOT DES. NO. 0100987



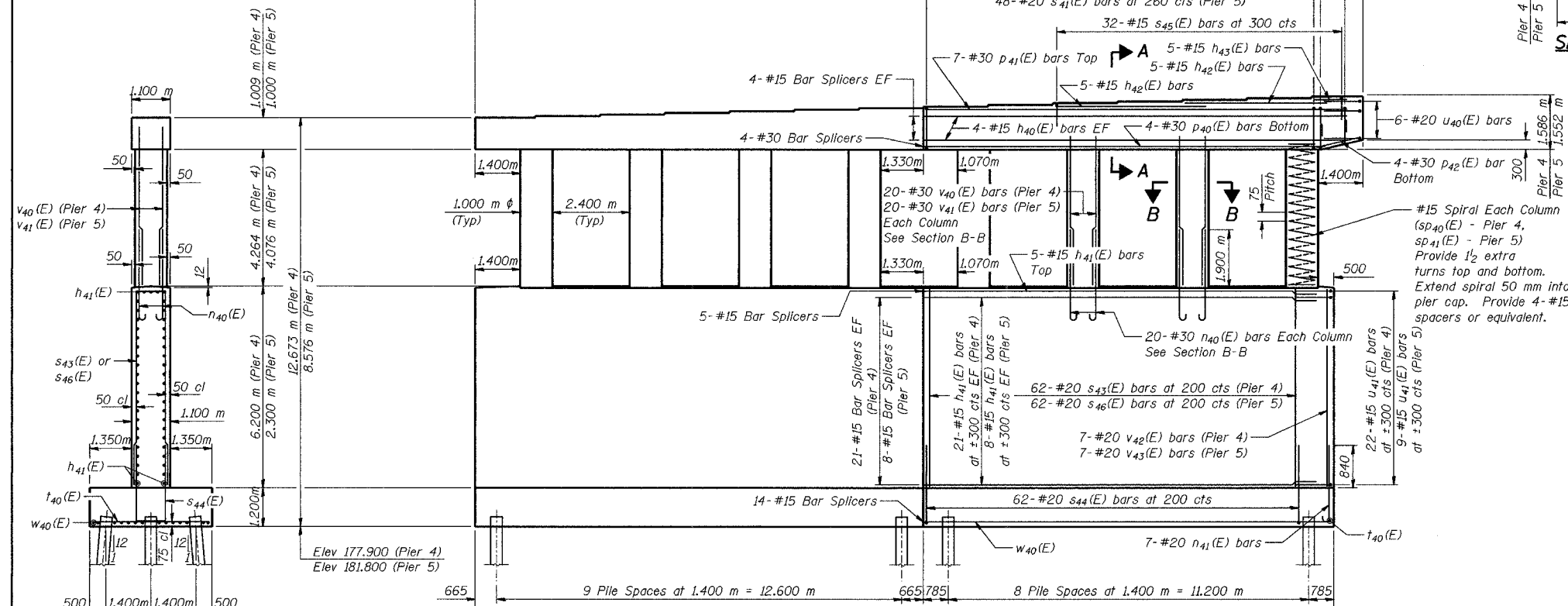
TOP PLAN



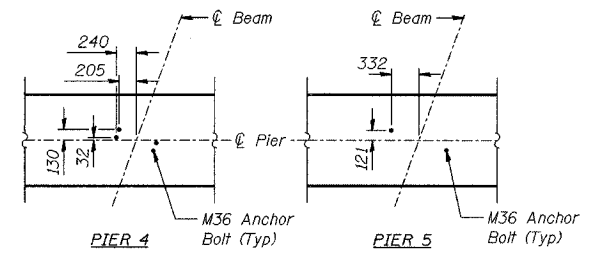
SECTION A-A



SECTION B-B



ELEVATION (Looking East)



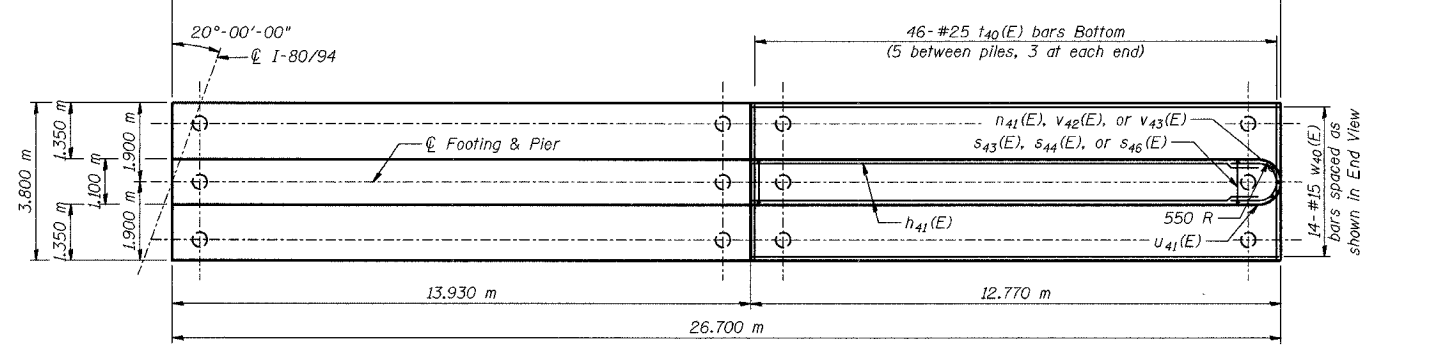
DETAIL C ANCHOR BOLT LAYOUT

PILE DATA

Type - 356 ϕ Metal Shell
 Capacity - 500 kN
 Est Length - 14.3 m
 No Req'd - 112 Total*
 Test Piles - 1 per Pier

* Phase 2, Stage 2: 26 per Pier
 Phase 3, Stage 2: 30 per Pier

DESIGNED	BHS
CHECKED	KFA
DRAWN	MJB
CHECKED	GSP



FOOTING PLAN

PHASE 3 FOR INFORMATION ONLY

LEGEND
 EF - Each Face

MINIMUM BAR LAPS
 #15 bars = 640
 #20 bars = 790
 #25 bars = 1320
 #30 bars = 1850

NOTES:
 See Sheet No S-60 for Bill of Material.
 Space reinforcement in cap to miss anchor bolts.
 Pour steps monolithically with cap.
 Reinforcement bars designated (E) shall be epoxy coated.
 All dimensions are in millimeters (mm) except as noted.

ILLINOIS DEPARTMENT OF TRANSPORTATION
 F.A.I. ROUTE 80/94 (BORMAN EXPRESSWAY)
 OVER LITTLE CALUMET RIVER & N.I.C.T.D. R.O.W.

PIERS 4 AND 5 - EASTBOUND
SECTION 2622-R-1
LAKE COUNTY, INDIANA
STATION 8+470.000
STRUCTURE NO. I-80-1-8460 (EB & WB)
 DATE 07/04 (016-1003 & 016-1004)

AMERICAN
 CONSULTING ENGINEERS