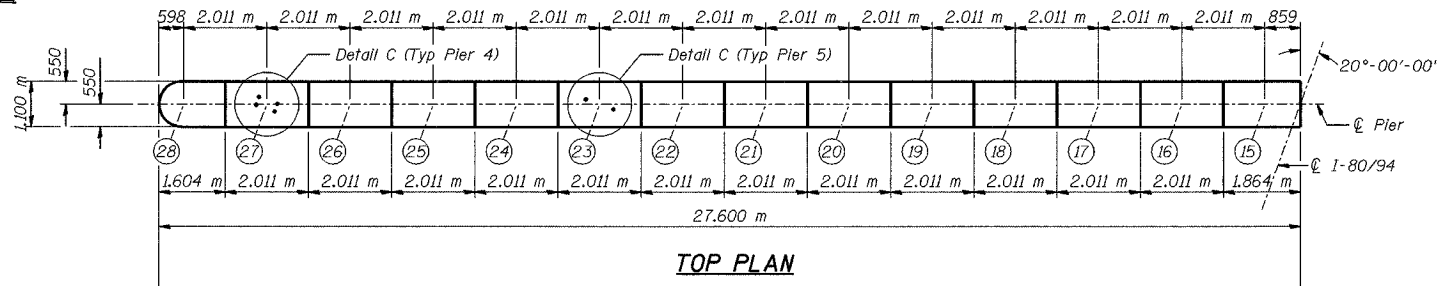
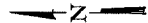
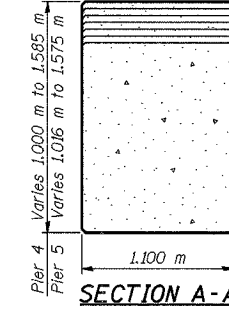


BEARING SEAT ELEVATIONS

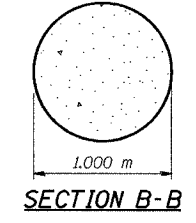
Beam	Pier 4	Pier 5
28	190.564	190.392
27	190.610	190.435
26	190.655	190.478
25	190.700	190.522
24	190.745	190.565
23	190.790	190.608
22	190.835	190.651
21	190.880	190.694
20	190.925	190.737
19	190.970	190.780
18	191.015	190.823
17	191.060	190.866
16	191.104	190.909
15	191.149	190.951



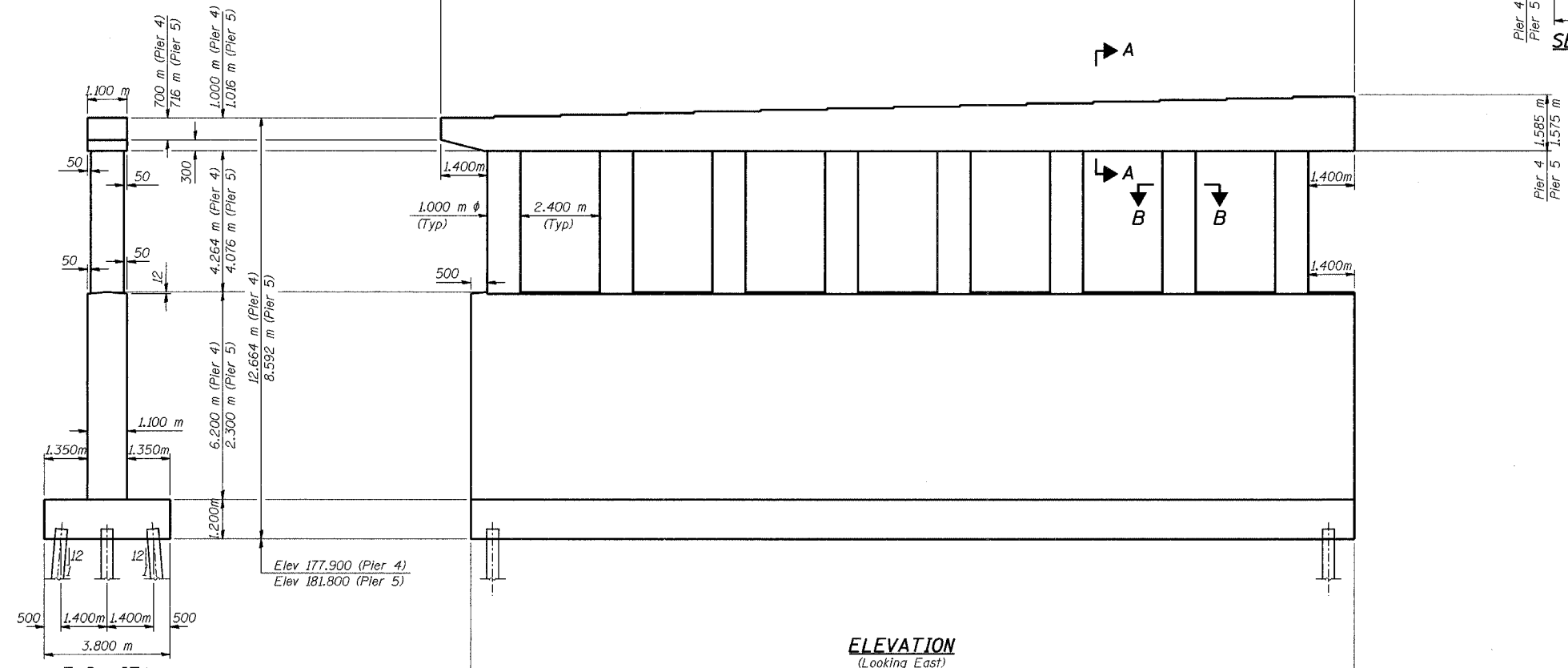
TOP PLAN



SECTION A-A



SECTION B-B



ELEVATION
(Looking East)

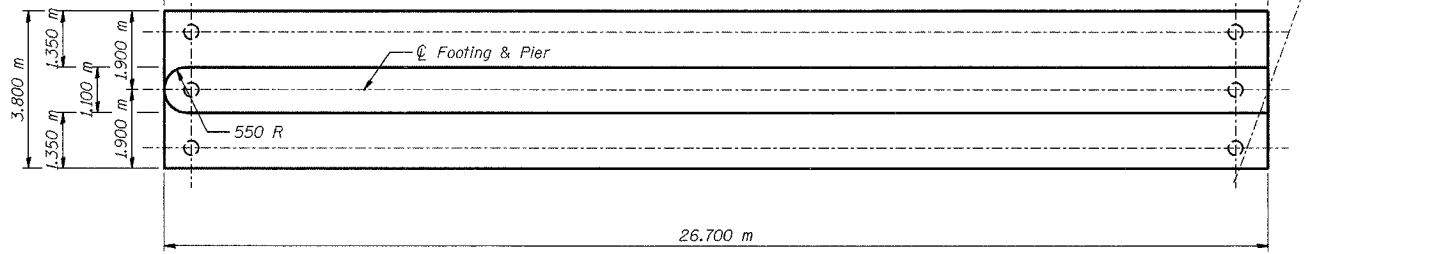
END VIEW

PILE DATA

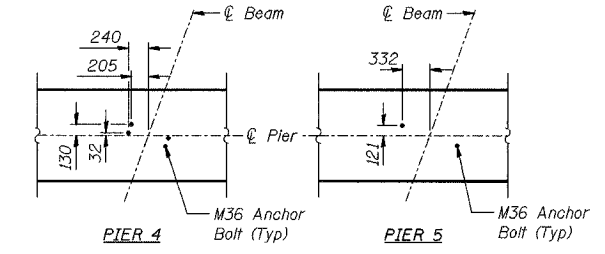
Type - 356 ϕ Metal Shell
Capacity - 500 kN
Est Length - 14.3 m
No Req'd - xx Total*
Test Piles - 1

* Phase 3, Stage 3; xx per Pier

DESIGNED	BHS
CHECKED	KFA
DRAWN	MJB
CHECKED	GSP



FOOTING PLAN



DETAIL C
ANCHOR BOLT LAYOUT

NOTES:
See Sheet No S-60 for Bill of Material.
Space reinforcement in cap to miss anchor bolts.
Pour steps monolithically with cap.
Reinforcement bars designated (E) shall be epoxy coated.
Bars indicated thus 20 x 3-#15 etc. indicates 20 lines of bars with 3 lengths per line.
All dimensions are in millimeters (mm) except as noted.

LEGEND
EF - Each Face
MINIMUM BAR LAPS
#15 bars = 640
#20 bars = 790
#25 bars = 1320
#30 bars = 1850

ILLINOIS DEPARTMENT OF TRANSPORTATION
F.A.I. ROUTE 80/94 (BORMAN EXPRESSWAY)
OVER LITTLE CALUMET RIVER & N.I.C.T.D. R.O.W.
PIERS 4 AND 5 - WESTBOUND
SECTION 2626.2-R-1
LAKE COUNTY, INDIANA
STATION 8+470.000
STRUCTURE NO. I-80-1-9460 (EB & WB)
DATE 07/04 (016-1003 & 016-1004)
AMERICAN
CONSULTING ENGINEERS

FOR INFORMATION ONLY