

**BORING NO. AB-16 (2 OF 2)**

**BORING NO. AB-17 (1 OF 3)**

**BORING NO. AB-17 (2 OF 3)**

**BORING LOG AB-16** Page 2 of 2

Wang Engineering, INC. Consulting Geotechnical and Environmental Engineers  
wangeng3@wangeng.com  
100 Fairbank Street  
Addison, IL 60101  
Telephone: 630 458-0700  
Fax: 630 458-0900

WEI Job No.: 255-08-01  
Client: American Consulting Engineers  
Project: FAI 80/94, I-294 to US 41  
Location: s13 T36N R10W & s29 R15E T36N

Datum: NGVD  
Elevation: 180.43 m  
North: 545267.58 m  
East: 367886.08 m  
Station: 8+486.95  
Offset: 0.54 LT

**BORING LOG AB-17** Page 1 of 3

Wang Engineering, INC. Consulting Geotechnical and Environmental Engineers  
wangeng3@wangeng.com  
100 Fairbank Street  
Addison, IL 60101  
Telephone: 630 458-0700  
Fax: 630 458-0900

WEI Job No.: 255-08-01  
Client: American Consulting Engineers  
Project: FAI 80/94, I-294 to US 41  
Location: s13 T36N R10W & s29 R15E T36N

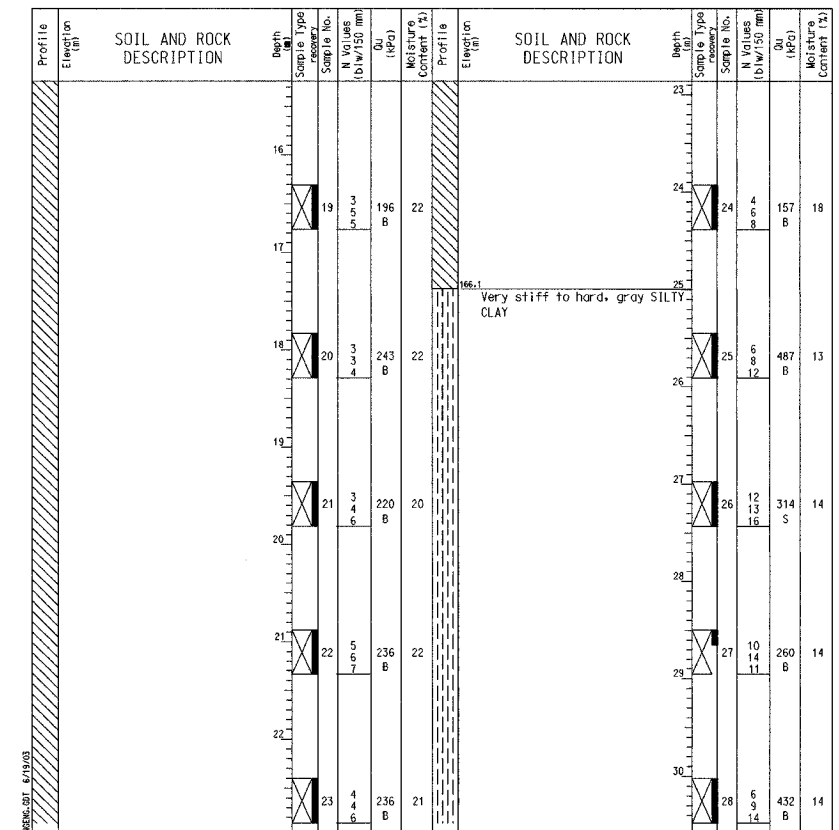
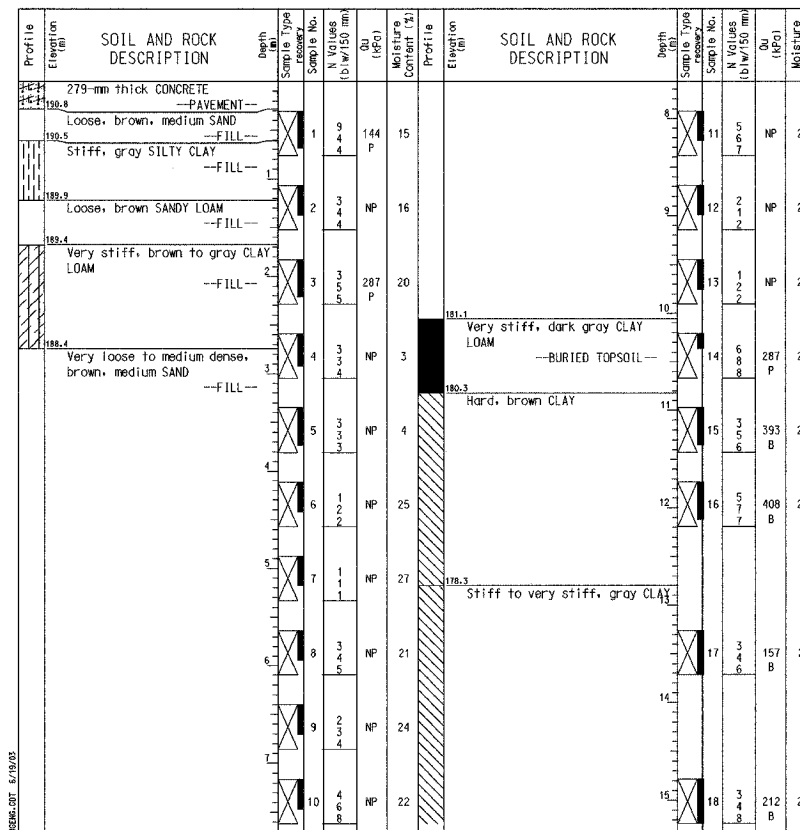
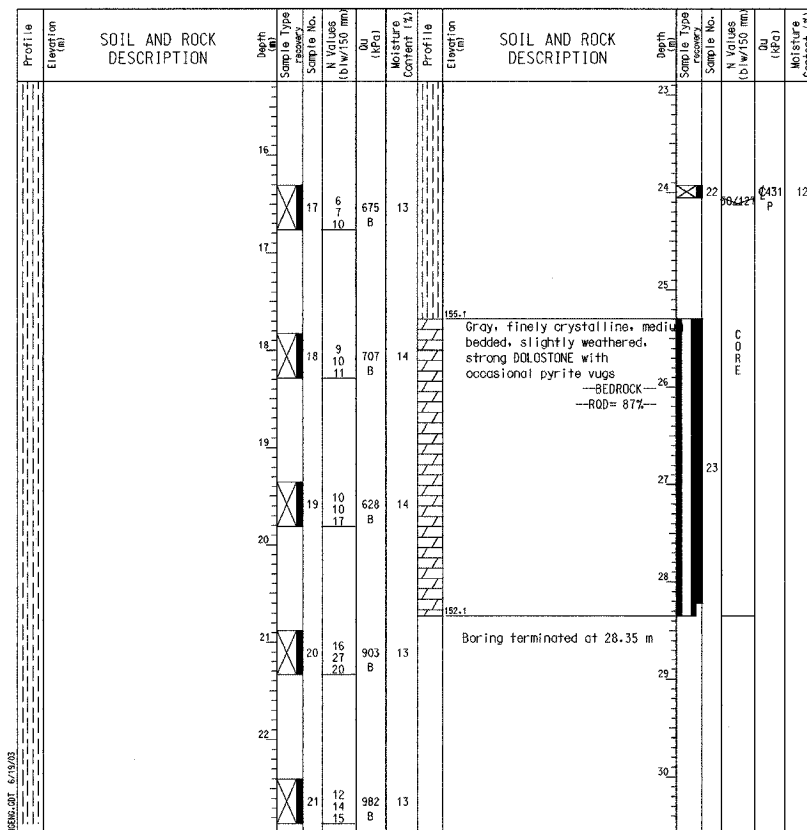
Datum: NGVD  
Elevation: 191.12 m  
North: 545266.08 m  
East: 367829.44 m  
Station: 8+434.07  
Offset: 19.82 RT

**BORING LOG AB-17** Page 2 of 3

Wang Engineering, INC. Consulting Geotechnical and Environmental Engineers  
wangeng3@wangeng.com  
100 Fairbank Street  
Addison, IL 60101  
Telephone: 630 458-0700  
Fax: 630 458-0900

WEI Job No.: 255-08-01  
Client: American Consulting Engineers  
Project: FAI 80/94, I-294 to US 41  
Location: s13 T36N R10W & s29 R15E T36N

Datum: NGVD  
Elevation: 191.12 m  
North: 545266.08 m  
East: 367829.44 m  
Station: 8+434.07  
Offset: 19.82 RT



**GENERAL NOTES**

Begin Drilling 01-07-2002 Complete Drilling 01-07-2002  
Drilling Contractor TSC Drill Rig B-61  
Driller G&D Logger B. Fugiel checked by B. Fugiel  
Drilling Method Mud Rotary; Grouted after final water reading

**WATER LEVEL DATA**

While Drilling  $\nabla$  2.67 m  
At Completion of Drilling  $\nabla$  2.44 m  
Time After Drilling 24 hours  
Depth to Water  $\nabla$  2.13 m

The stratification lines represent the approximate boundary between soil types; the actual transition may be gradual.

**GENERAL NOTES**

Begin Drilling 01-24-2002 Complete Drilling 01-25-2002  
Drilling Contractor TSC Drill Rig CME 75  
Driller C&J Logger B. Fugiel checked by N. Davis  
Drilling Method Mud Rotary; Grouted upon completion

**WATER LEVEL DATA**

While Drilling  $\nabla$  -  
At Completion of Drilling  $\nabla$  -  
Time After Drilling - hours  
Depth to Water  $\nabla$  m

The stratification lines represent the approximate boundary between soil types; the actual transition may be gradual.

**GENERAL NOTES**

Begin Drilling 01-24-2002 Complete Drilling 01-25-2002  
Drilling Contractor TSC Drill Rig CME 75  
Driller C&J Logger B. Fugiel checked by N. Davis  
Drilling Method Mud Rotary; Grouted upon completion

**WATER LEVEL DATA**

While Drilling  $\nabla$  -  
At Completion of Drilling  $\nabla$  -  
Time After Drilling - hours  
Depth to Water  $\nabla$  m

The stratification lines represent the approximate boundary between soil types; the actual transition may be gradual.

DESIGNED	BHS
CHECKED	KFA
DRAWN	CAK MJB
CHECKED	GSP

ILLINOIS DEPARTMENT OF TRANSPORTATION  
F.A.I. ROUTE 80/94 (BORMAN EXPRESSWAY)  
OVER LITTLE CALUMET RIVER & N.I.C.T.D. R.O.W.

**BORING LOGS (4 OF 10)**  
**SECTION 2626.2-R-1**  
**LAKE COUNTY, INDIANA**  
**STATION 8+470.000**  
**STRUCTURE NO. I-80-1-8460 (EB & WB)**  
**DATE 07/04 (016-1003 & 016-1004)**

**AMERICAN**  
CONSULTING ENGINEERS