

**BORING NO. AB-23 (1 OF 2)**

**BORING NO. AB-23 (2 OF 2)**

**BORING NO. AB-24 (1 OF 2)**

**BORING LOG AB-23** Page 1 of 2

Wang Engineering, INC. Consulting Geotechnical and Environmental Engineers  
wangen3@wangen.com  
100 Fairbank Street  
Addison, IL 60101  
Telephone: 630 458-0700  
Fax: 630 458-0900

WEI Job No.: 255-08-01  
Client: American Consulting Engineers  
Project: FAI 80/94, I-294 to US 41  
Location: s13 T36N R10W & s29 R15E T36N

Datum: NGVD  
Elevation: 180.39 m  
North: 545223.64 m  
East: 367935.14 m  
Station: 8+547.88  
Offset: 24.47 RT

**BORING LOG AB-23** Page 2 of 2

Wang Engineering, INC. Consulting Geotechnical and Environmental Engineers  
wangen3@wangen.com  
100 Fairbank Street  
Addison, IL 60101  
Telephone: 630 458-0700  
Fax: 630 458-0900

WEI Job No.: 255-08-01  
Client: American Consulting Engineers  
Project: FAI 80/94, I-294 to US 41  
Location: s13 T36N R10W & s29 R15E T36N

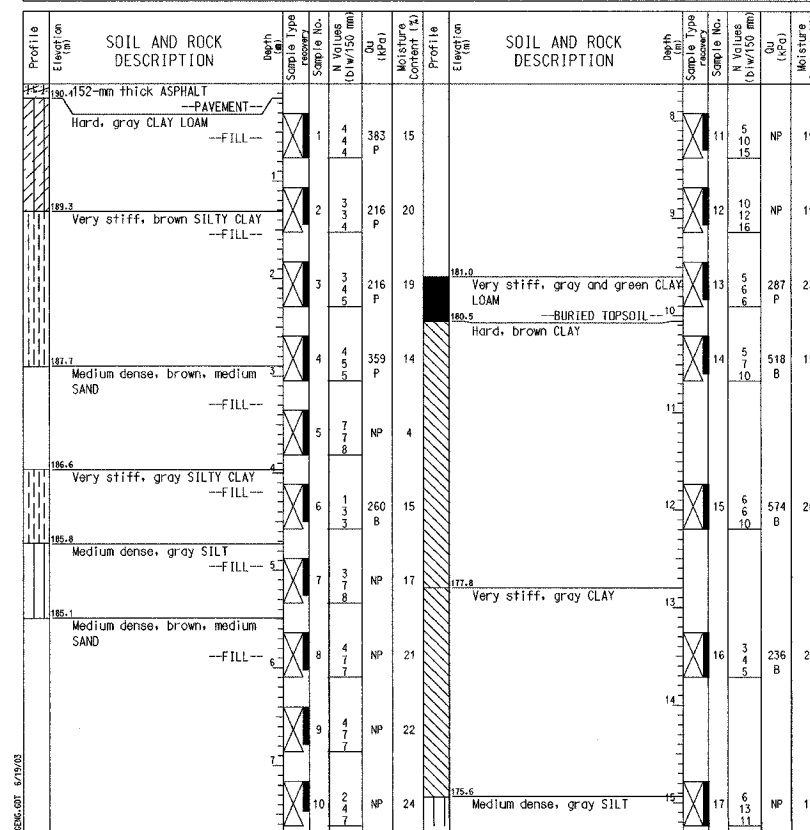
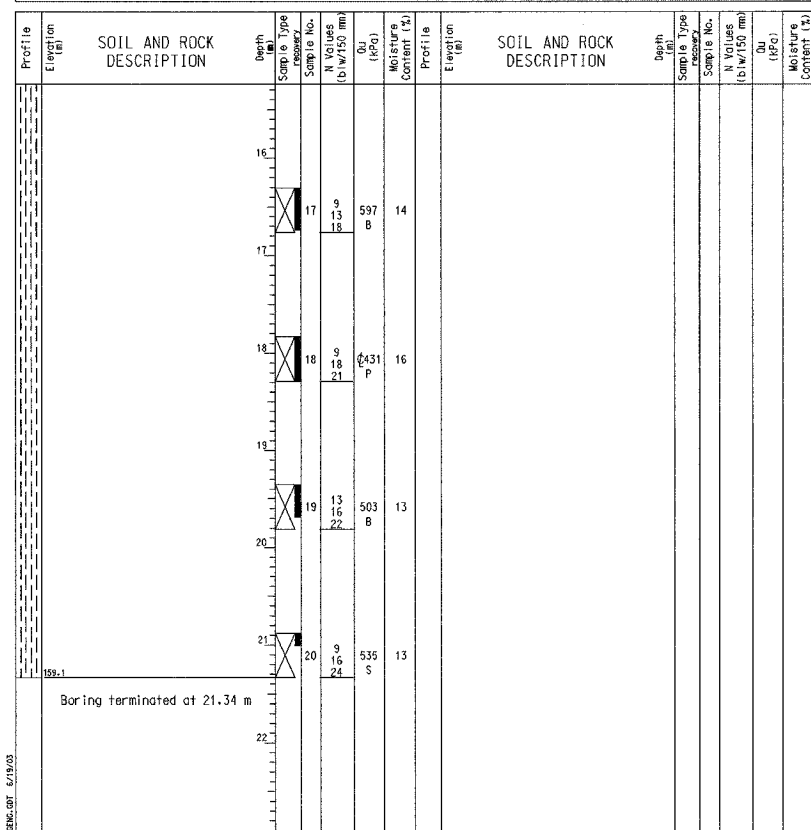
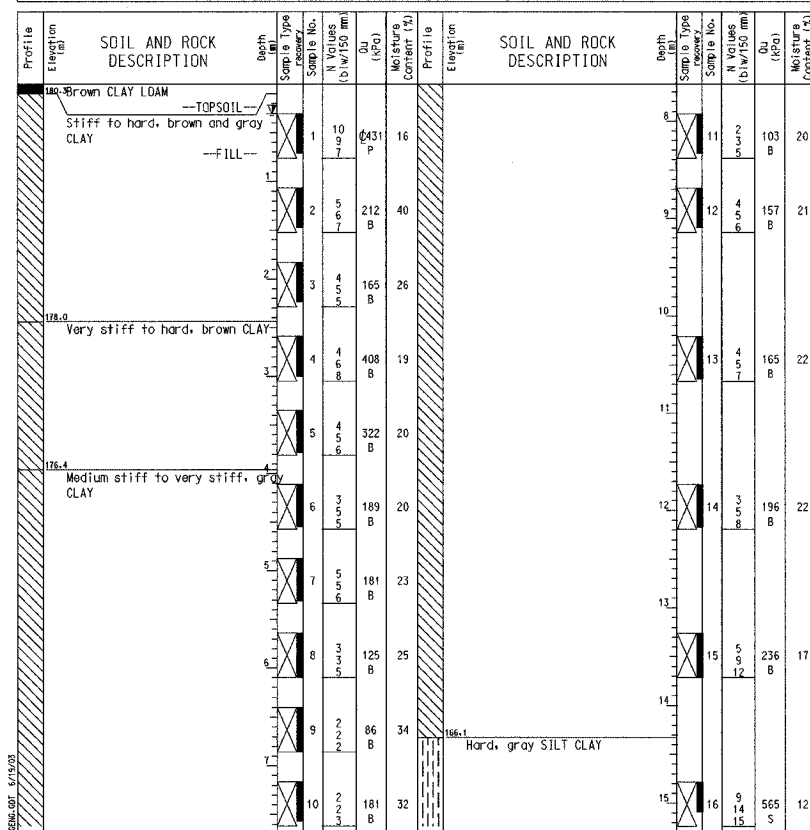
Datum: NGVD  
Elevation: 180.39 m  
North: 545223.64 m  
East: 367935.14 m  
Station: 8+547.88  
Offset: 24.47 RT

**BORING LOG AB-24** Page 1 of 2

Wang Engineering, INC. Consulting Geotechnical and Environmental Engineers  
wangen3@wangen.com  
100 Fairbank Street  
Addison, IL 60101  
Telephone: 630 458-0700  
Fax: 630 458-0900

WEI Job No.: 255-08-01  
Client: American Consulting Engineers  
Project: FAI 80/94, I-294 to US 41  
Location: s13 T36N R10W & s29 R15E T36N

Datum: NGVD  
Elevation: 190.57 m  
North: 545209.11 m  
East: 367989.76 m  
Station: 8+604.21  
Offset: 19.99 RT



**GENERAL NOTES**

Begin Drilling 01-10-2002 Complete Drilling 01-10-2002  
Drilling Contractor TSC Drill Rig CME 75  
Driller G&D Logger D. Peterson checked by N. Davis  
Drilling Method Mud Rotary; Grouted after final water reading

**WATER LEVEL DATA**

While Drilling  -  
At Completion of Drilling  -  
Time After Drilling 24 hours  
Depth to Water 0.30 m

The stratification lines represent the approximate boundary between soil types; the actual transition may be gradual.

**GENERAL NOTES**

Begin Drilling 01-10-2002 Complete Drilling 01-10-2002  
Drilling Contractor TSC Drill Rig CME 75  
Driller G&D Logger D. Peterson checked by N. Davis  
Drilling Method Mud Rotary; Grouted after final water reading

**WATER LEVEL DATA**

While Drilling  -  
At Completion of Drilling  -  
Time After Drilling 24 hours  
Depth to Water 0.30 m

The stratification lines represent the approximate boundary between soil types; the actual transition may be gradual.

**GENERAL NOTES**

Begin Drilling 01-23-2002 Complete Drilling 01-23-2002  
Drilling Contractor TSC Drill Rig CME 75  
Driller C&J Logger B. Fugiel checked by N. Davis  
Drilling Method Mud Rotary; Grouted upon completion

**WATER LEVEL DATA**

While Drilling  -  
At Completion of Drilling  -  
Time After Drilling - hours  
Depth to Water 0 m

The stratification lines represent the approximate boundary between soil types; the actual transition may be gradual.

DESIGNED	BHS
CHECKED	KFA
DRAWN	CAK/MJB
CHECKED	GSP

ILLINOIS DEPARTMENT OF TRANSPORTATION  
F.A.I. ROUTE 80/94 (BORMAN EXPRESSWAY)  
OVER LITTLE CALUMET RIVER & N.I.C.T.D. R.O.W.

**BORING LOGS (9 OF 10)**  
**SECTION 2626.2-R-1**  
**LAKE COUNTY, INDIANA**  
**STATION 8+470.000**  
**STRUCTURE NO. I-80-1-8460 (EB & WB)**  
**DATE 07/04 (016-1003 & 016-1004)**

**AMERICAN**  
CONSULTING ENGINEERS