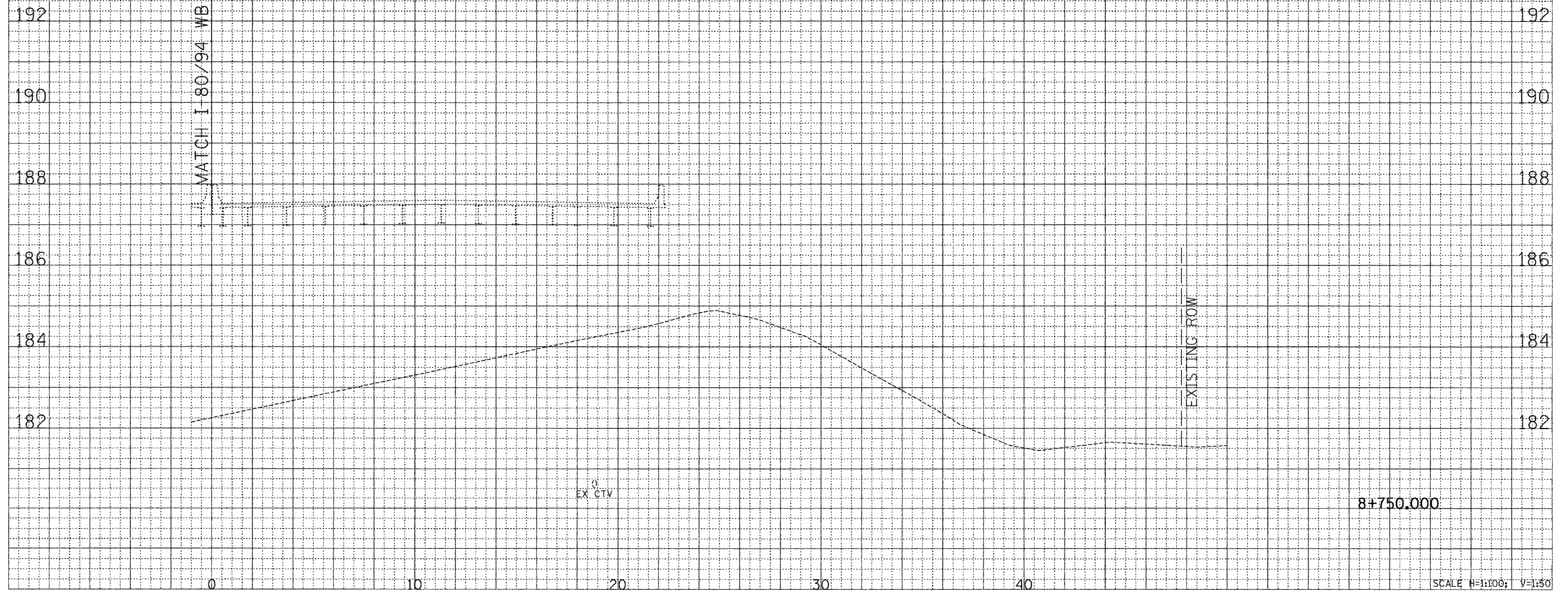


C 1-80/94/US 6

F.A.I. RTE.	SECTION	COUNTY	TOTAL SHEETS	SHEET NO.
80/94	2626.2-R-1	COOK	452	441
STA.		TO STA.		
FED. ROAD DIST. NO.	ILLINOIS FED. AID PROJECT			
CONTRACT NO. 62113	INDOT DES. NO 0100987			

FINAL SURVEY NOTE BOOK NO.	SURVEYED POINTS AREAS CHECKED	BY	DATE

ORIGINAL SURVEY NOTE BOOK NO.	SURVEYED POINTS AREAS CHECKED	BY	DATE



8+750.000

SCALE H=1:100; V=1:50

CROSS SECTION - I-80/94/US 6

\\srean\us\00000_001.mxd 2011/2004 12 28 2: 48