

F.A.U. OR F.A.P. R.T.E.	SECTION	COUNTY	TOTAL SHEETS	SHEET NO.
VARIOUS	2015-0541	COOK, DUPAGE, & WILL	13	1
		ILLINOIS	CONTRACT NO. 62B22	

INDEX OF SHEETS 03-04-2016 LETTING ITEM 013

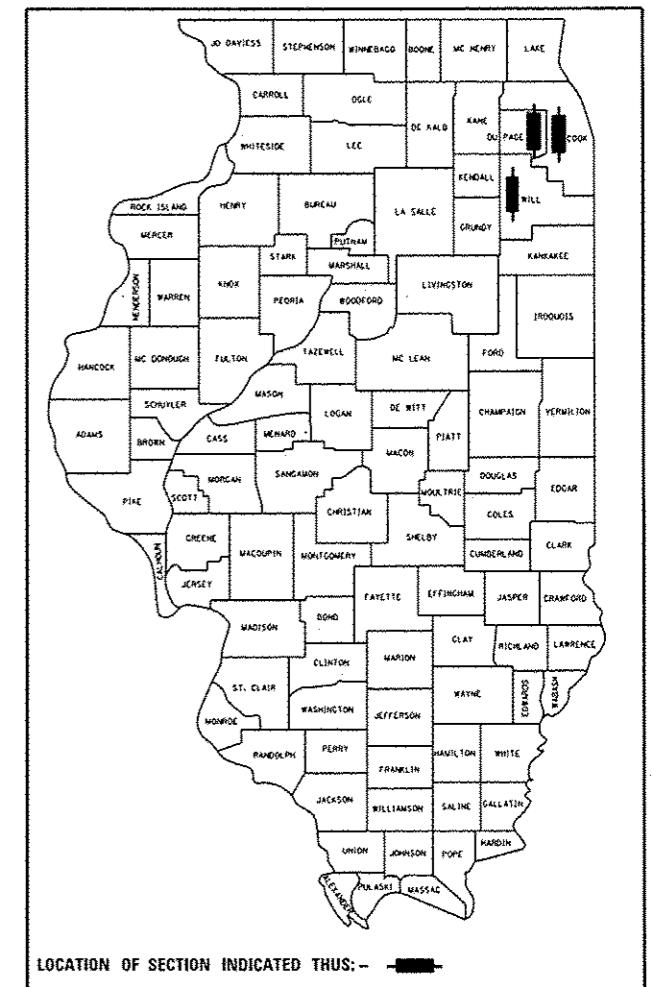
- 1 COVER SHEET
- 2 SUMMARY OF QUANTITIES
- 3 LOCATION MAPS
- 4 SB I-55 TO ARSENAL RD. SITE PLAN
- 5 NB IL-53 TO WB AND EB LAKE COOK RD. SITE PLAN
- 6 EB I-290 EXIT TO EB IL-64/EB US-20 NORTH AVE/LAKE ST. SITE PLAN
- 7 NB I-55 EXIT TO NB I-294 SITE PLAN
- 8-10 CROSS SECTIONS
- 11-13 DETAILS

STATE OF ILLINOIS  
DEPARTMENT OF TRANSPORTATION  
DIVISION OF HIGHWAYS

**PROPOSED  
HIGHWAY PLANS**

F.A.U. OR F.A.P. ROUTE: VARIOUS  
SECTION: 2015-0541  
RAMP RADAR SPEED SIGN ASSEMBLY  
VARIOUS COUNTIES  
ACHSIP-000V (049)

C-91-400-15



**PROJECT DESCRIPTION**

THIS PROJECT IS TO REDUCE INCIDENT OF PRIMARILY TRUCKS LEAVING LOOP RAMP TRAVEL LANE AND EITHER COLLIDING WITH A BARRIER AND OR TURNING OVER BECAUSE OF UNSAFE SPEED BY INSTALLING RADAR SPEED SIGN.

**HIGHWAY STANDARDS**

- 701101-04 OFF-RD OPERATIONS, MULTILANE, 15' (4.5 m) TO 24" (600 mm) FROM PAVEMENT EDGE
- 701400-08 APPROACH TO LANE CLOSURE, FREEWAY/EXPRESSWAY
- 701401-09 LANE CLOSURE, FREEWAY/EXPRESSWAY
- 701411-09 LANE CLOSURE, MULTILANE, AT ENTRANCE OR EXIT RAMP, FOR SPEEDS > 45 MPH
- 701428 TRAFFIC CONTROL SETUP AND REMOVAL FREEWAY/EXPRESSWAY
- 701446-06 TWO LANE CLOSURE FREEWAY/EXPRESSWAY
- 701901-04 TRAFFIC CONTROL DEVICES

**DISTRICT 1 STANDARD DETAILS**

- TC-8 ENTRANCE AND EXIT RAMP CLOSURE DETAILS
- TC-9 SINGLE LANE WEAVE AND MULTI-LANE WEAVE
- TC-17 PARTIAL RAMP & SHOULDER CLOSURE DETAILS

**TRAFFIC DATA**

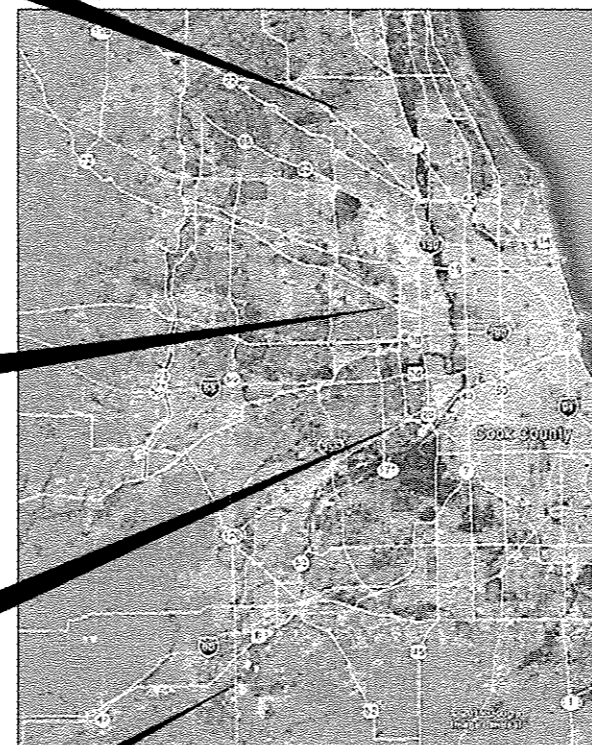
- SB- I-55 TO ARSENAL RD. 2014 ADT = 47,800 (MAINLINE)  
SPEED LIMIT =40 MPH
- EB I-290 EXIT TO EB IL-64/EB US-20 NORTH AVE/LAKE ST 2014 ADT = 147,000 (MAINLINE)  
SPEED LIMIT =20 MPH
- NB I-55 EXIT TO NB I-294 2013 ADT = 12,600  
SPEED LIMIT =30 MPH
- NB IL-53 TO WB AND EB LAKE COOK RD 2006 ADT = 2,700  
SPEED LIMIT =30 MPH (TO EB LAKE COOK RD)  
SPEED LIMIT =35 MPH (TO WB LAKE COOK RD)

NB IL-53 TO WB AND  
EB LAKE COOK RD

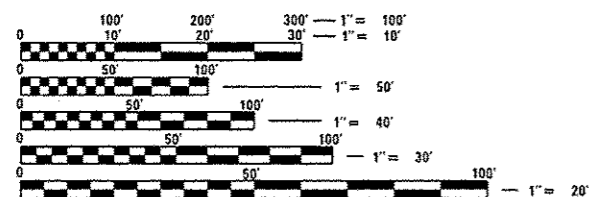
EB I-290 EXIT TO EB IL-64/EB  
US-20 NORTH AVE/LAKE ST

NB I-55 EXIT TO NB I-294

SB- I-55 TO ARSENAL RD.



LOCATION MAP  
SEE SHEET NO. 3



FULL SIZE PLANS HAVE BEEN PREPARED USING STANDARD ENGINEERING SCALES. REDUCED SIZED PLANS WILL NOT CONFORM TO STANDARD SCALES. IN MAKING MEASUREMENTS ON REDUCED PLANS, THE ABOVE SCALES MAY BE USED.

J.U.L.I.E.  
JOINT UTILITY LOCATION INFORMATION FOR EXCAVATION  
1-800-892-0123  
OR 811

PROJECT ENGINEER: MARK JENKINS  
PROJECT MANAGER: MARK JENKINS

CONTRACT NO. 62B22



SIGNED: *Rashesh Patel*  
RASHESH D. PATEL, P.E. 062-06417  
EXP. 11/30/2017

DATE 12/17/2015

STATE OF ILLINOIS  
DEPARTMENT OF TRANSPORTATION  
DIVISION OF HIGHWAYS

SUBMITTED *17 Dec 2015*  
*John A. Fortman*  
DEPUTY DIRECTOR OF HIGHWAYS, REGION ENGINEER

*Jan 29 2016*  
*Muhammad M. Adis, P.E.*  
ENGINEER OF DESIGN AND ENVIRONMENT

*Jan 29 2016*  
*Omer Osman, P.E.*  
DIRECTOR OF HIGHWAYS, CHIEF ENGINEER



PRINTED BY THE AUTHORITY  
OF THE STATE OF ILLINOIS

DISTRICT 1 TRAFFIC OPERATIONS: MARK JENKINS, P.E. (847) 705-4350 SCHAUMBURG, ILLINOIS

90% FED/10% STATE  
URBAN  
0021

CODE NO.	ITEM	UNIT	TOTAL QUANTITY	1 SB I-55 TO ARSENAL ROAD	2 NB I-55 TO NB I-294	3 EB I-290 TO EB IL-64/EB US-20	4 NB IL-53 TO WB LAKE COOK ROAD	5 NB IL-53 TO EB LAKE COOK ROAD
67100100	MOBILIZATION	LSUM	1	0.2	0.2	0.2	0.2	0.2
72000100	SIGN PANEL - TYPE 1	SO FT	18.75	6.25	6.25	6.25	-	-
72000200	SIGN PANEL - TYPE 2	SO FT	76	16	16	16	28	-
72400200	REMOVE SIGN PANEL ASSEMBLY - TYPE B	EACH	1	-	-	-	1	-
72400600	RELOCATE SIGN PANEL ASSEMBLY - TYPE B	EACH	1	-	-	-	-	1
X7011015	TRAFFIC CONTROL AND PROTECTION (EXPRESSWAYS)	LSUM	1	0.2	0.2	0.2	0.2	0.2
X1400145	RADAR SPEED SIGN	EACH	5	1	1	1	1	1
X2600015	RADAR SPEED SIGN POST, 20 FT.	EACH	5	1	1	1	1	1
X1400146	HELIX FOUNDATION AND BREAKAWAY DEVICE	EACH	5	1	1	1	1	1

9

I:\14001\Task\_Order\_INCON\CADD\_Sheets\02\_D162822-sht-S00.dgn  
 17-DEC-2015 10:29 \$TIME\$



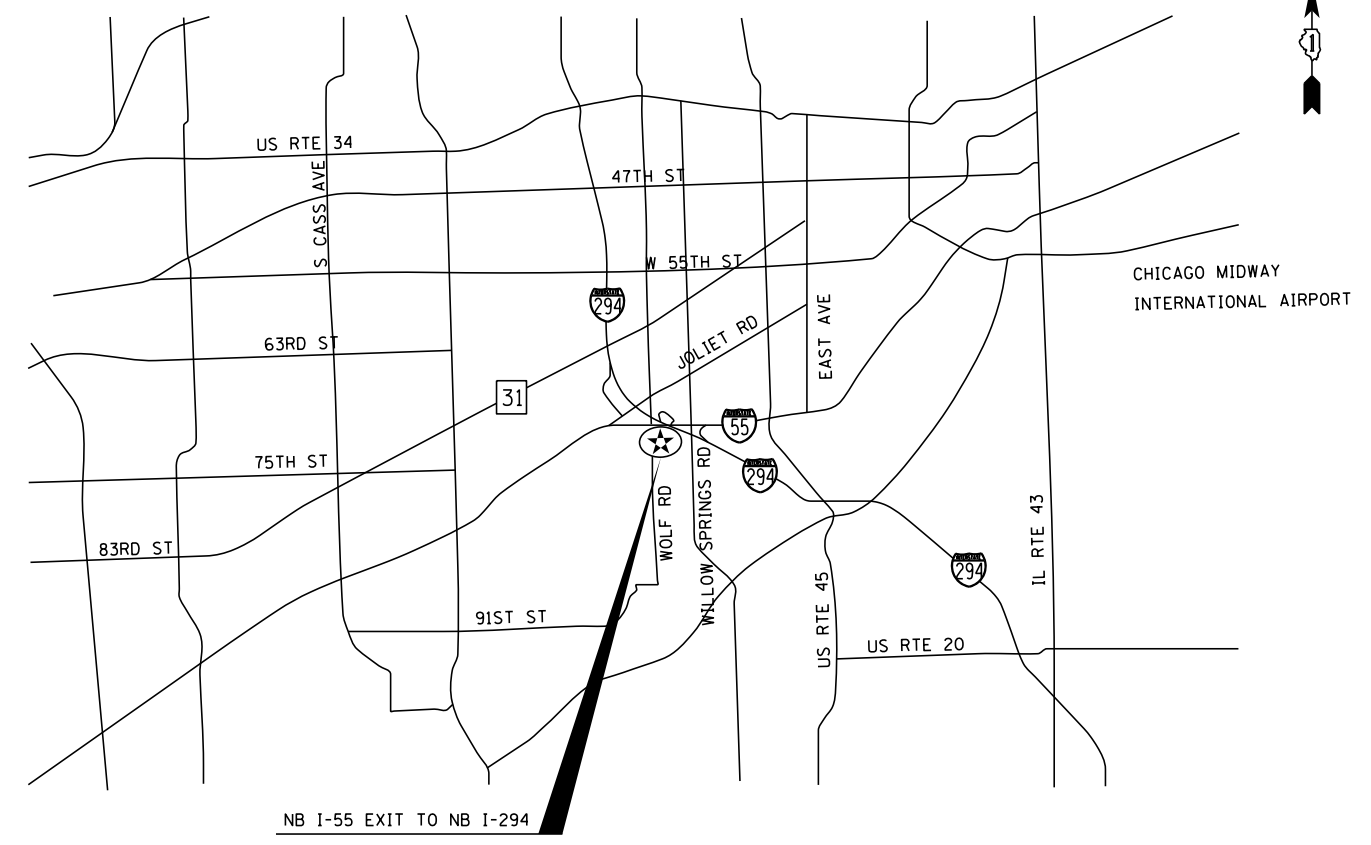
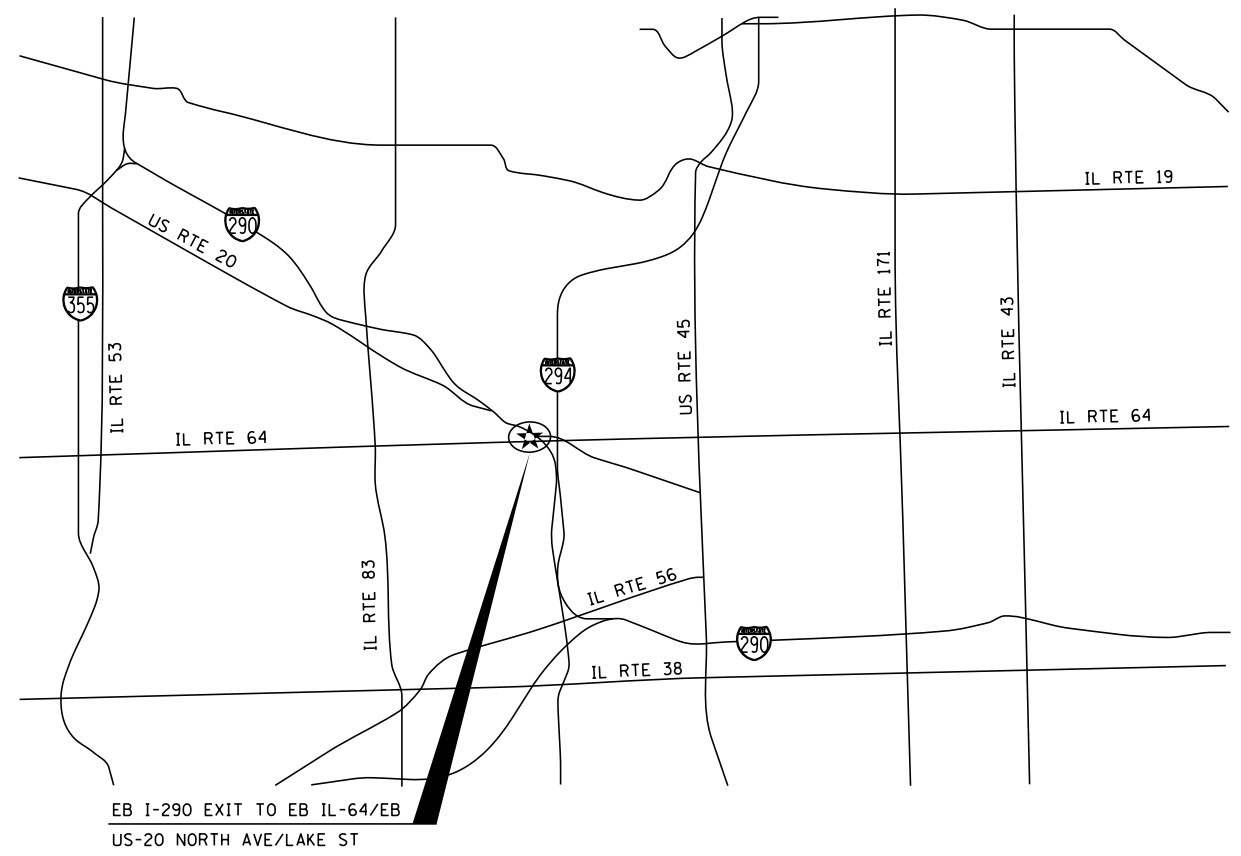
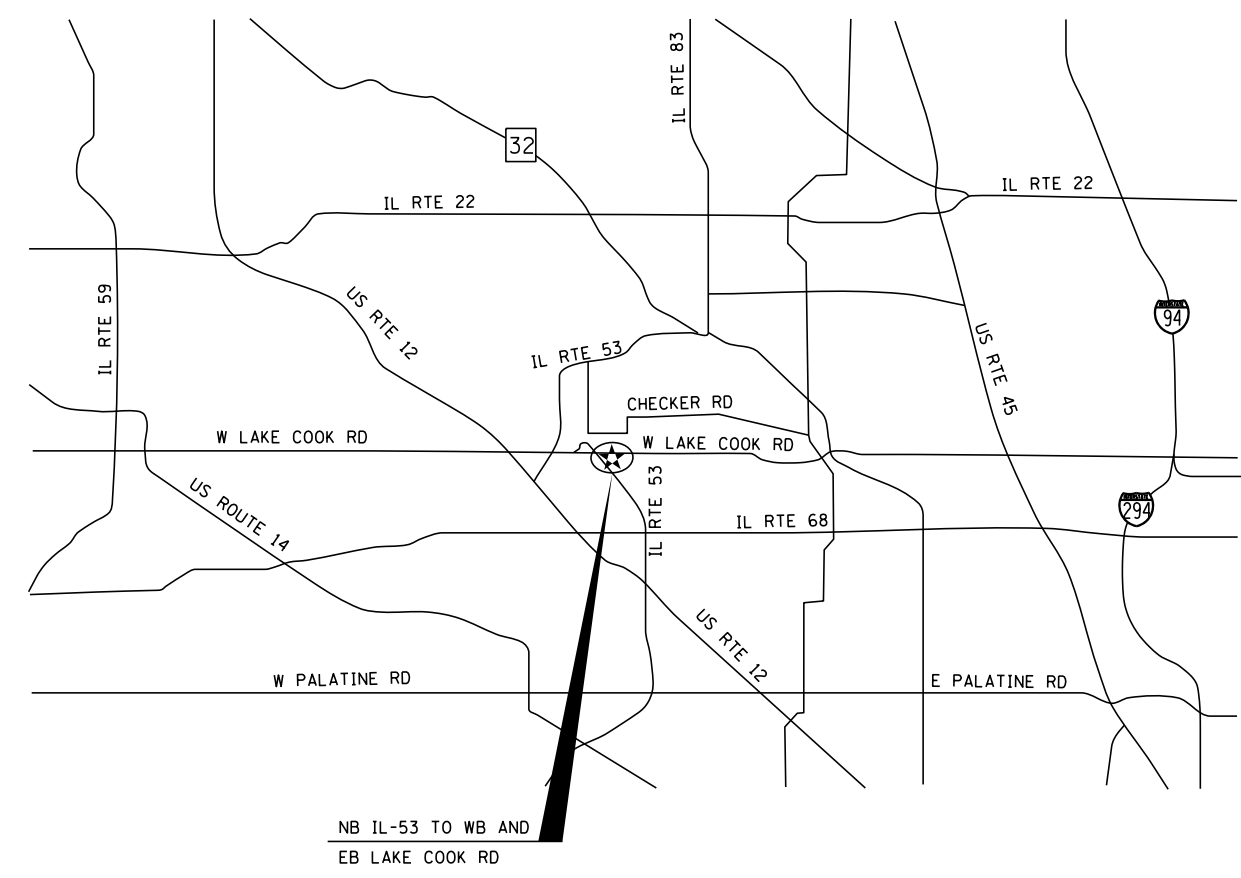
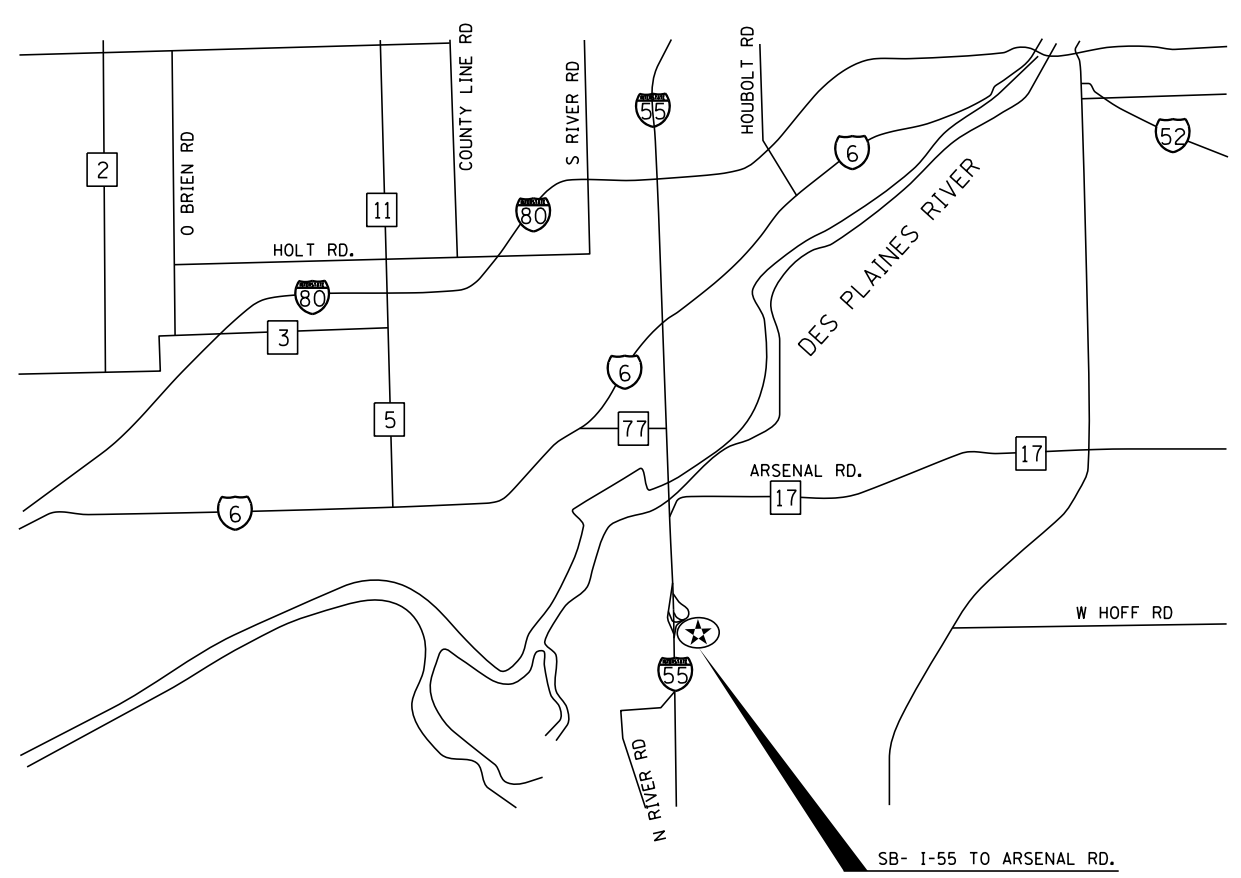
USER NAME * ngervida	DESIGNED - RS	REVISED -
PLOT SCALE * 100.00000000.000000	DRAWN - CN	REVISED -
PLOT DATE * 17-DEC-2015 11:29	CHECKED - KGP	REVISED -
	DATE - 12/17/2015	REVISED -

STATE OF ILLINOIS  
DEPARTMENT OF TRANSPORTATION

SUMMARY OF QUANTITIES

SCALE: AS NOTED SHEET NO. OF SHEETS STA. TO STA.

F.A.P OR F.A.U. RTE.	SECTION	COUNTY	TOTAL SHEETS	SHEET NO.
VARIOUS	2015-0541	COOK & WILL	13	2
ILLINOIS FED. AID PROJECT			CONTRACT NO. 62B22	



J:\140601\Task\_Order\ADG\N\CADD\_Sheets\03\_D162B22-sht-loc\_mcp.dgn  
 07-DEC-2015 09:33:15 TIME\$



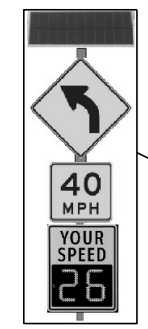
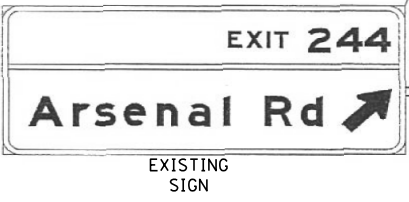
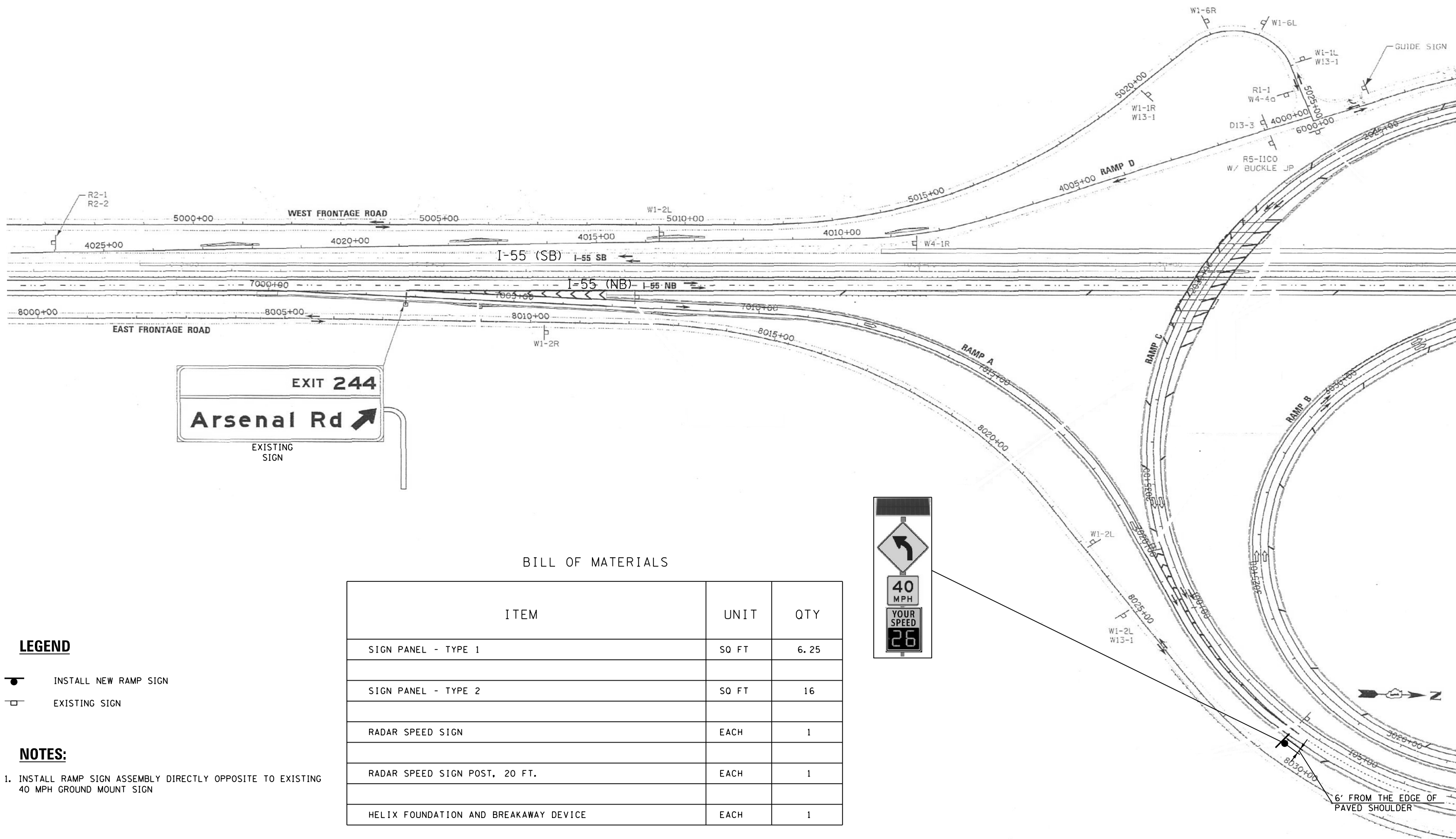
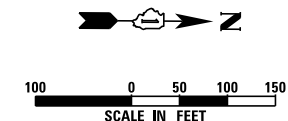
USER NAME = mgrvinda	DESIGNED - RS	REVISED -
PLOT SCALE = 100.000000:1.000000	DRAWN - CN	REVISED -
PLOT DATE = 07-DEC-2015 19:31	CHECKED - KGP	REVISED -
	DATE - 12/07/2015	REVISED -

**STATE OF ILLINOIS  
DEPARTMENT OF TRANSPORTATION**

**LOCATION MAPS**

SCALE: AS NOTED	SHEET NO.	OF SHEETS	STA.	TO STA.	N/A
-----------------	-----------	-----------	------	---------	-----

F.A.P OR F.A.U. RTE.	SECTION	COUNTY	TOTAL SHEETS	SHEET NO.
VARIOUS	2015-0541	COOK & WILL	13	3
CONTRACT NO. 62B22				
ILLINOIS FED. AID PROJECT				



BILL OF MATERIALS

ITEM	UNIT	QTY
SIGN PANEL - TYPE 1	SQ FT	6.25
SIGN PANEL - TYPE 2	SQ FT	16
RADAR SPEED SIGN	EACH	1
RADAR SPEED SIGN POST, 20 FT.	EACH	1
HELIX FOUNDATION AND BREAKAWAY DEVICE	EACH	1

LEGEND

- INSTALL NEW RAMP SIGN
- EXISTING SIGN

NOTES:

1. INSTALL RAMP SIGN ASSEMBLY DIRECTLY OPPOSITE TO EXISTING 40 MPH GROUND MOUNT SIGN

I:\14060\1\Task\_Order\INDCN\CADD\_Sheets\04\_D162B22-sht-plan01.dgn  
 08-DEC-2015 14:17:51 TIME\$



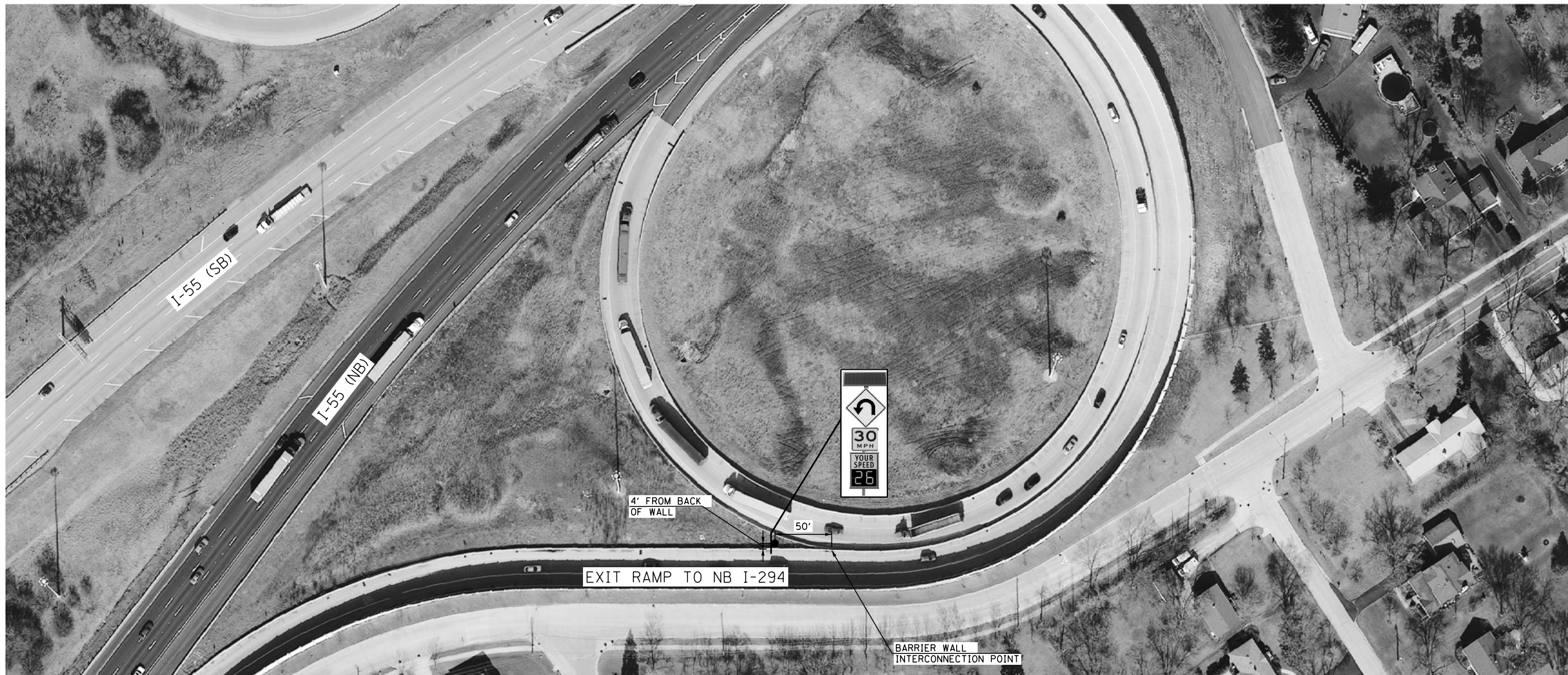
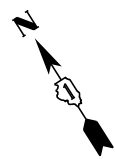
USER NAME = mgravida	DESIGNED - RS	REVISED -
PLOT SCALE = 100.000001:1.000000	DRAWN - CN	REVISED -
PLOT DATE = 08-DEC-2015 17:17	CHECKED - KGP	REVISED -
	DATE - 12/07/2015	REVISED -

STATE OF ILLINOIS  
DEPARTMENT OF TRANSPORTATION

SB I-55 TO ARSENAL RD. SITE PLAN

SCALE: AS NOTED SHEET NO. OF SHEETS STA. TO STA.


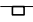
F.A.P OR F.A.U. RTE.	SECTION	COUNTY	TOTAL SHEETS	SHEET NO.
VARIOUS	2015-0541	COOK & WILL	13	4
CONTRACT NO. 62B22			ILLINOIS FED. AID PROJECT	



BILL OF MATERIALS

ITEM	UNIT	QTY
SIGN PANEL - TYPE 1	SO FT	6.25
SIGN PANEL - TYPE 2	SO FT	16
RADAR SPEED SIGN	EACH	1
RADAR SPEED SIGN POST, 20 FT.	EACH	1
HELIX FOUNDATION AND BREAKAWAY DEVICE	EACH	1

LEGEND

-  INSTALL NEW RAMP SIGN
-  EXISTING SIGN

S:\14060\T\est\_Order\_INDCVN\CADD\_Sheets\05\_D162B22-sht-plan02.dgn 07-DEC-2015 09:33\$TIME\$

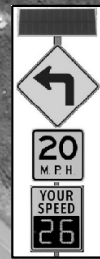


USER NAME = mgrvinda	DESIGNED - RS	REVISED -
PLOT SCALE = 100.000000:1.000000	DRAWN - CN	REVISED -
PLOT DATE = 07-DEC-2015 19:31	CHECKED - KGP	REVISED -
	DATE - 12/07/2015	REVISED -

STATE OF ILLINOIS  
DEPARTMENT OF TRANSPORTATION

NB I-55 EXIT TO NB I-294 SITE PLAN			
SCALE: AS NOTED	SHEET NO.	OF SHEETS	STA. TO STA.




F.A.P OR F.A.U. RTE.	SECTION	COUNTY	TOTAL SHEETS	SHEET NO.
VARIOUS	2015-0541	COOK & WILL	13	5
CONTRACT NO. 62B22				
ILLINOIS FED. AID PROJECT				



BILL OF MATERIALS

ITEM	UNIT	QTY
SIGN PANEL - TYPE 1	SO FT	6.25
SIGN PANEL - TYPE 2	SO FT	16
RADAR SPEED SIGN	EACH	1
RADAR SPEED SIGN POST, 20 FT.	EACH	1
HELIX FOUNDATION AND BREAKAWAY DEVICE	EACH	1

LEGEND

-  INSTALL NEW RAMP SIGN
-  EXISTING HIGH MAST TOWER
-  EXISTING SIGN

S:\140601\Tst\Orders\INDCN\CADD\_Sheets\06\_D162B22-sht-plan03.dgn 07-DEC-2015 09:32:28 TIME\$



USER NAME = mgrvinda	DESIGNED - RS	REVISED -
PLLOT SCALE = 100.000000:1.000000	DRAWN - CN	REVISED -
PLLOT DATE = 07-DEC-2015 19:32	CHECKED - KGP	REVISED -
	DATE - 12/07/2015	REVISED -

STATE OF ILLINOIS  
DEPARTMENT OF TRANSPORTATION

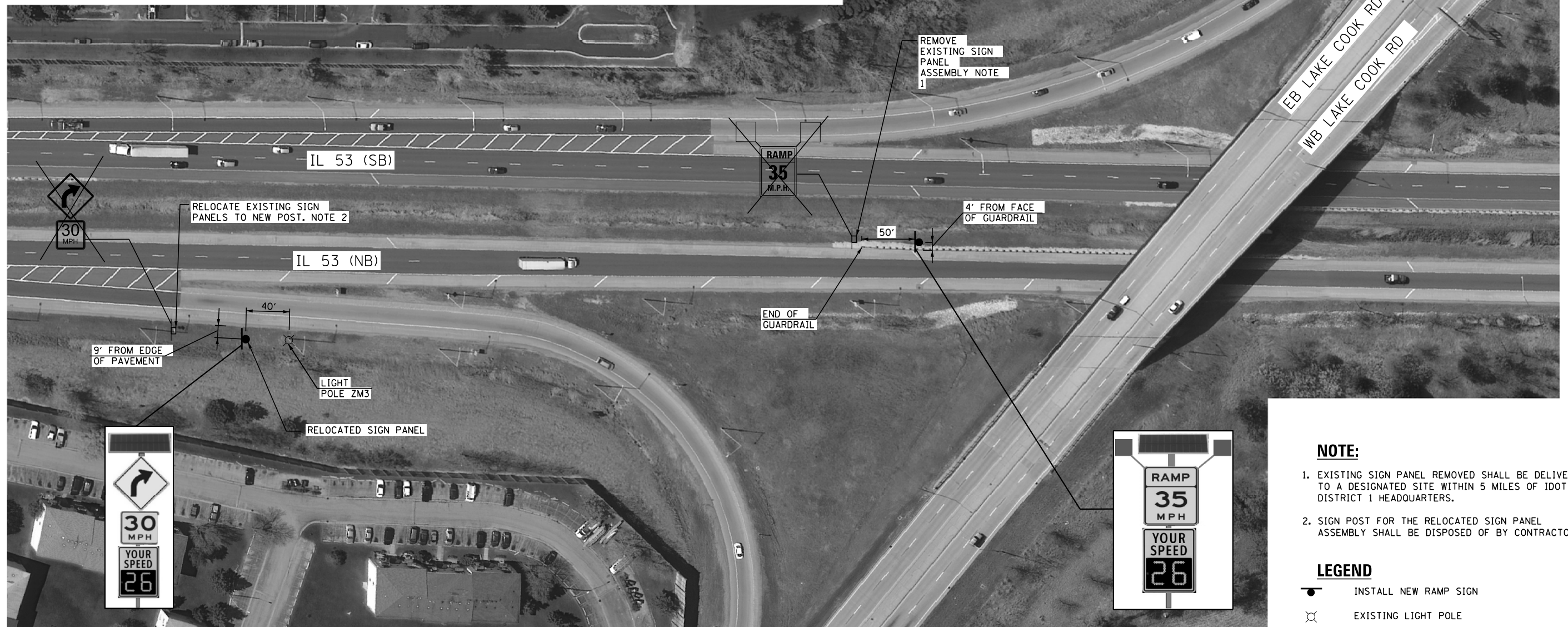
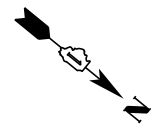
EB I-290 EXIT TO EB IL-64/EB US-20  
NORTH AVELAKE ST. SITE PLAN

SCALE: AS NOTED SHEET NO. OF SHEETS STA. TO STA.

F.A.P OR F.A.U. RTE.	SECTION	COUNTY	TOTAL SHEETS	SHEET NO.
VARIOUS	2015-0541	COOK & WILL	13	6
CONTRACT NO. 62B22				
ILLINOIS FED. AID PROJECT				

BILL OF MATERIALS

ITEM	UNIT	NB IL-53 TO WB LAKE COOK ROAD	NB IL-53 TO EB LAKE COOK ROAD
SIGN PANEL - TYPE 2	50 FT	28	-
REMOVE SIGN PANEL ASSEMBLY-TYPE B	EACH	1	-
RELOCATE SIGN PANEL ASSEMBLY-TYPE B	EACH	-	1
RADAR SPEED SIGN	EACH	1	1
RADAR SPEED SIGN POST, 20 FT.	EACH	1	1
HELIX FOUNDATION AND BREAKAWAY DEVICE	EACH	1	1



**NOTE:**

- EXISTING SIGN PANEL REMOVED SHALL BE DELIVERED TO A DESIGNATED SITE WITHIN 5 MILES OF IDOT DISTRICT 1 HEADQUARTERS.
- SIGN POST FOR THE RELOCATED SIGN PANEL ASSEMBLY SHALL BE DISPOSED OF BY CONTRACTOR.

**LEGEND**

- INSTALL NEW RAMP SIGN
- EXISTING LIGHT POLE
- EXISTING SIGN

S:\14060\T\test\_order\INDOWN\CADD\_Sheets\07-DIG2B22-sht-plan04.dgn 07-DEC-2015 09:32:28 TIME\$



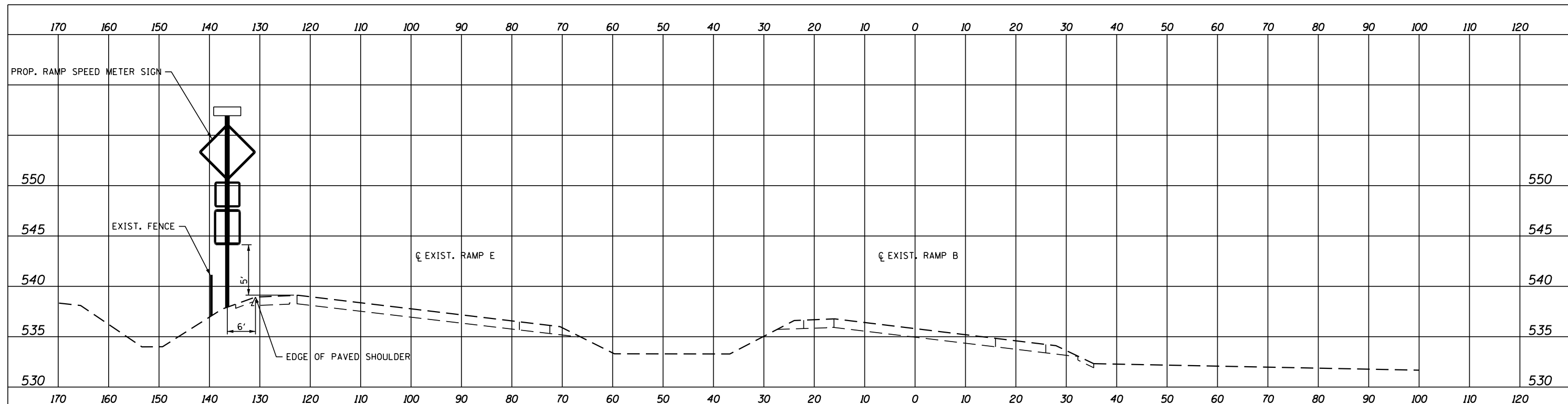
USER NAME = mgrvinda	DESIGNED - RS	REVISED -
PLOT SCALE = 100.000000:1.000000	DRAWN - CN	REVISED -
PLOT DATE = 07-DEC-2015 19:32	CHECKED - KGP	REVISED -
	DATE - 12/07/2015	REVISED -

STATE OF ILLINOIS  
DEPARTMENT OF TRANSPORTATION

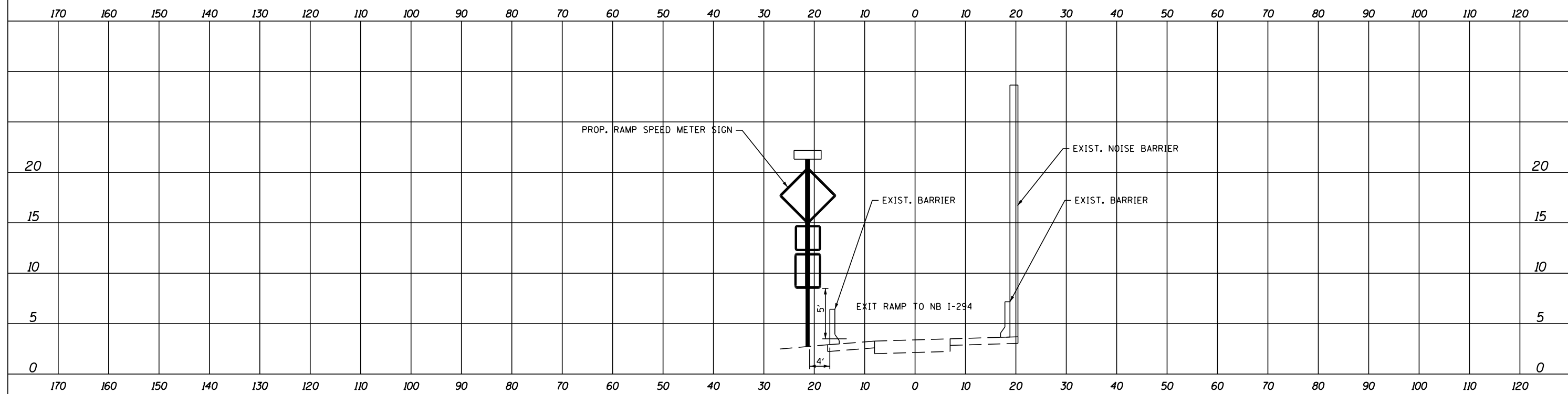
NB IL-53 TO WB AND EB LAKE COOK RD SITE PLAN

SCALE: AS NOTED SHEET NO. OF SHEETS STA. TO STA.

F.A.P OR F.A.U. RTE.	SECTION	COUNTY	TOTAL SHEETS	SHEET NO.
VARIOUS	2015-0541	COOK & WILL	13	7
				CONTRACT NO. 62B22
ILLINOIS FED. AID PROJECT				



SB I-55 TO ARSENAL RD  
LOOKING WEST



NB I-55 EXIT TO NB I-294  
LOOKING EAST

I:\M0601\Task\_Order\ADCN\CADD\_Sheets\08\_D162B22-sht-xssht101.dgn 17-DEC-2015 11:19 \$TIME\$



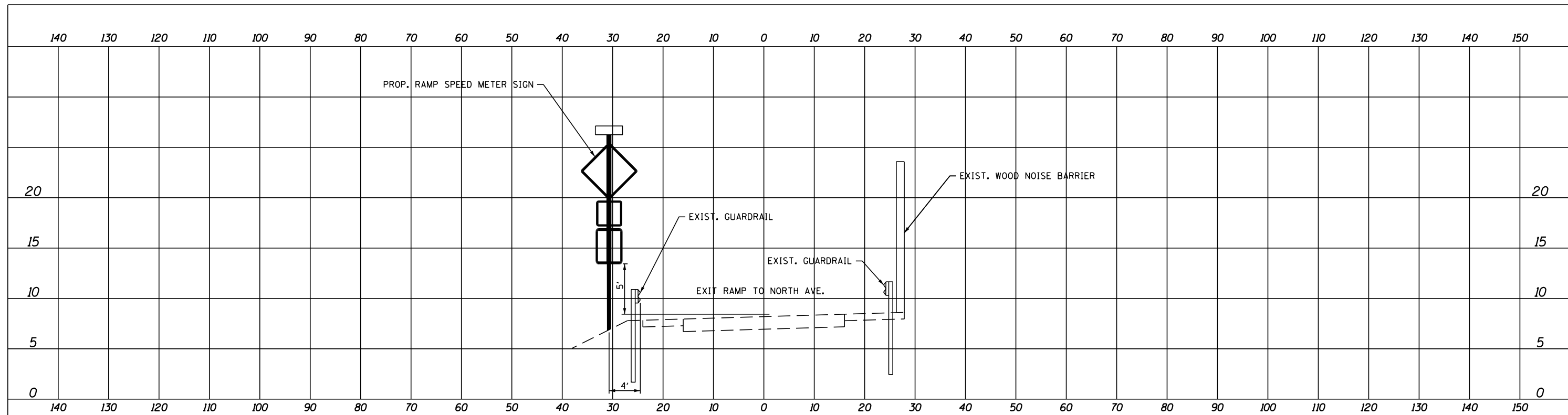
USER NAME = mgrvinda	DESIGNED - RS	REVISED -
PLOT SCALE = 48.000000:1.000000	DRAWN - CN	REVISED -
PLOT DATE = 17-DEC-2015 11:19	CHECKED - KGP	REVISED -
	DATE - 12/17/2015	REVISED -

STATE OF ILLINOIS  
DEPARTMENT OF TRANSPORTATION

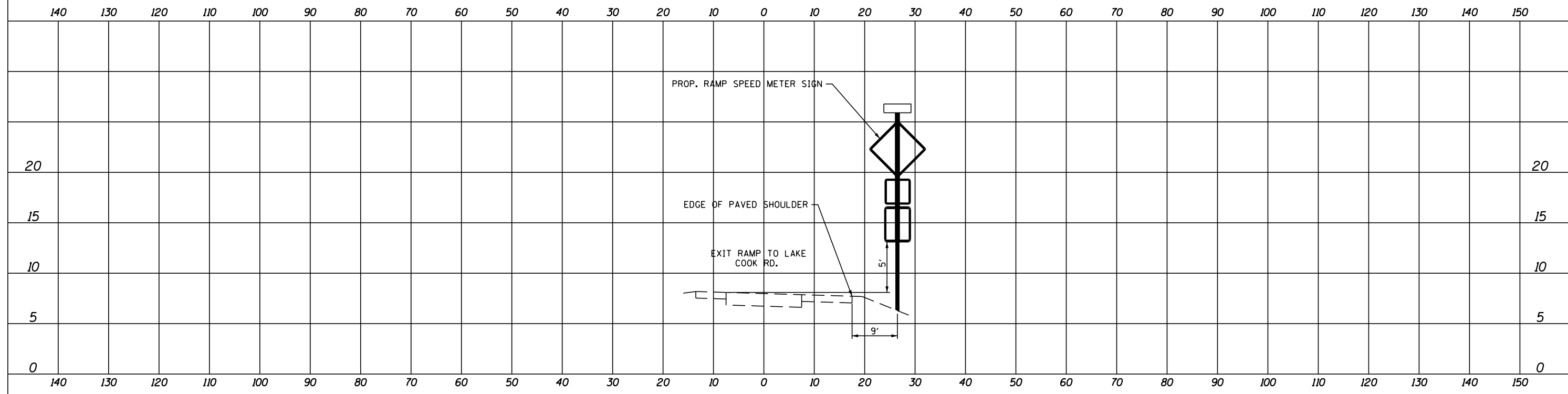
CROSS-SECTIONS			
SCALE: AS NOTED	SHEET NO.	OF SHEETS	STA. TO STA.

F.A.P OR F.A.U. RTE.	SECTION	COUNTY	TOTAL SHEETS	SHEET NO.
VARIOUS	2015-0541	COOK & WILL	13	8
CONTRACT NO. 62B22				
ILLINOIS FED. AID PROJECT				





EB I-290 EXIT TO EB IL-64/EB US-20  
NORTH AVE/LAKE ST.  
LOOKING SOUTH



NB IL-53 TO EB LAKE COOK RD  
LOOKING NORTH

I:\M0601\Task\_Order\DCNV\CADD\_Sheets\09\_D162B22-sht-xssht02.dgn 17-DEC-2015 11:19 \$TIME\$



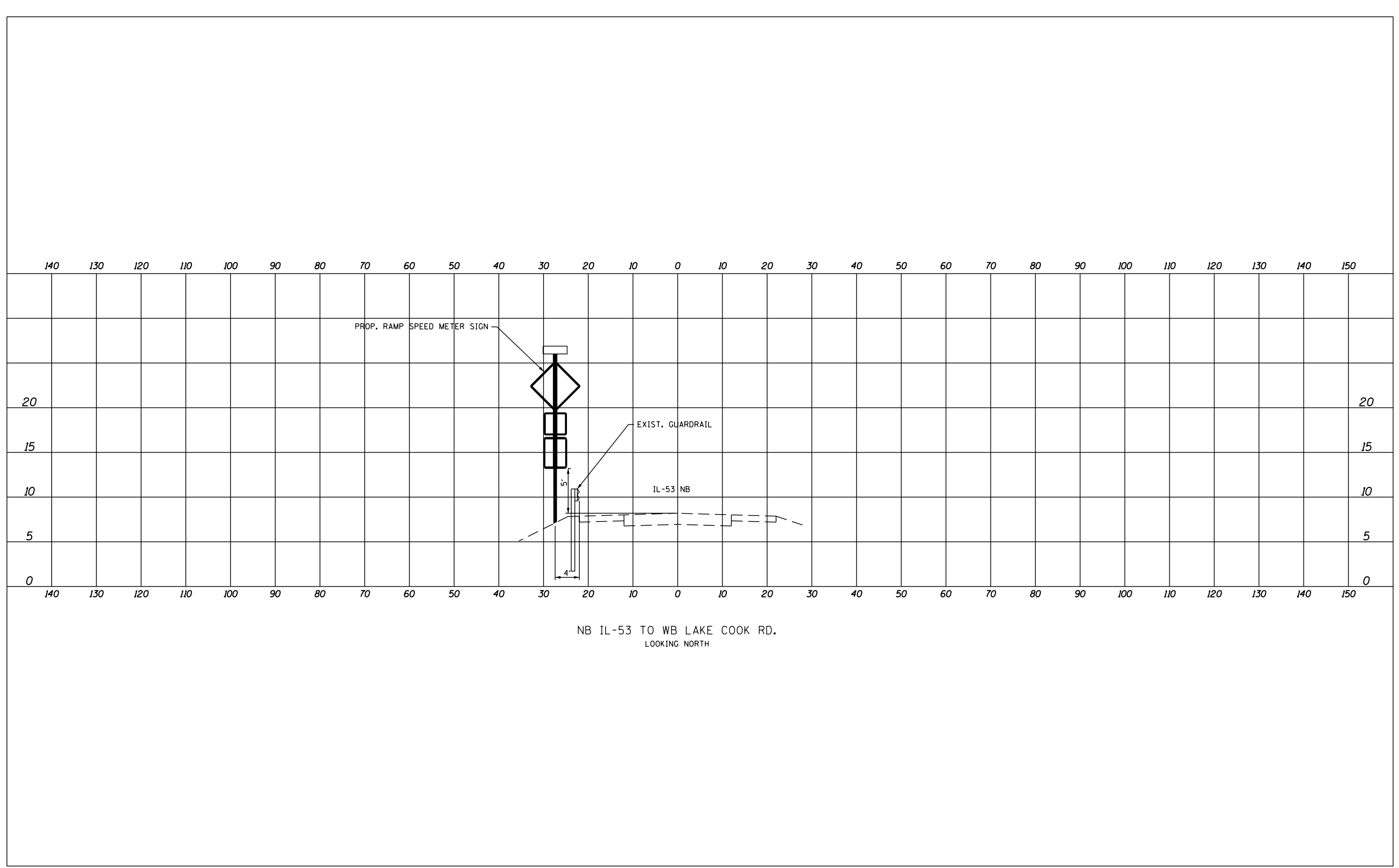
USER NAME = mgrvide	DESIGNED - RS	REVISED -
PLOT SCALE = 48.000000:1.000000	DRAWN - CN	REVISED -
PLOT DATE = 17-DEC-2015 11:19	CHECKED - KGP	REVISED -
	DATE - 12/17/2015	REVISED -

STATE OF ILLINOIS  
DEPARTMENT OF TRANSPORTATION

CROSS-SECTIONS

SCALE: AS NOTED SHEET NO. OF SHEETS STA. TO STA.

F.A.P OR F.A.U. RTE.	SECTION	COUNTY	TOTAL SHEETS	SHEET NO.
VARIOUS	2015-0541	COOK & WILL	13	9
CONTRACT NO. 62B22				
ILLINOIS FED. AID PROJECT				



I:\M060\Task\_Order\ADCN\CADD\_Sheets\10.DIG2B22-sh1-xssh03.dgn 17-DEC-2015 11:19 \$TIME\$

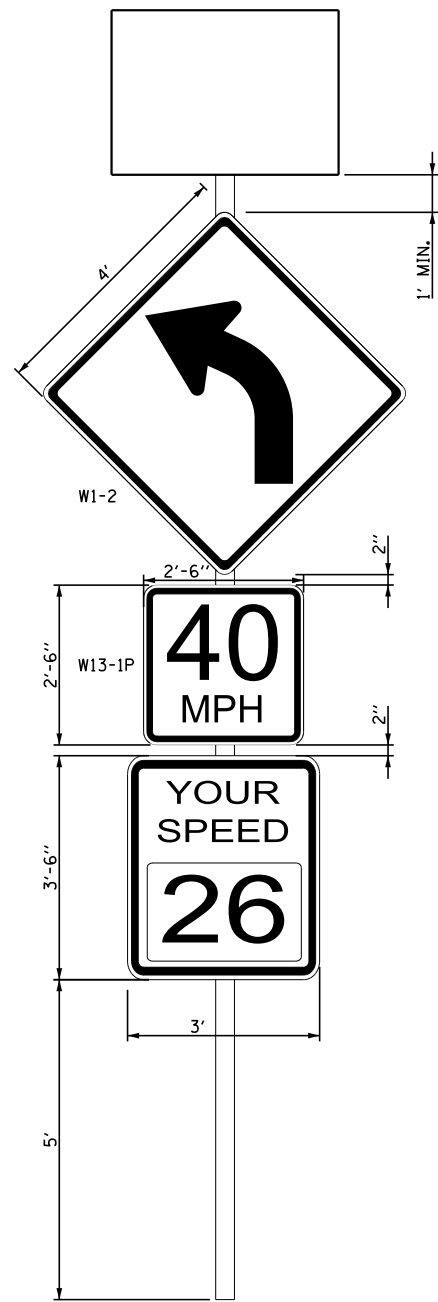


USER NAME = mgrvinda	DESIGNED - RS	REVISED -
	DRAWN - CN	REVISED -
PLOT SCALE = 40.000000:1.000000	CHECKED - KGP	REVISED -
PLOT DATE = 17-DEC-2015 11:19	DATE - 12/17/2015	REVISED -

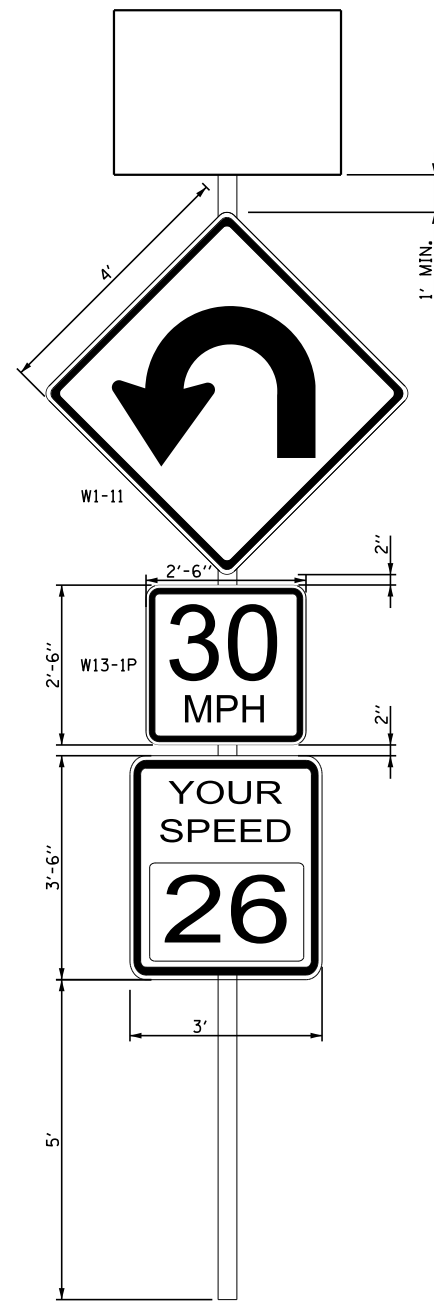
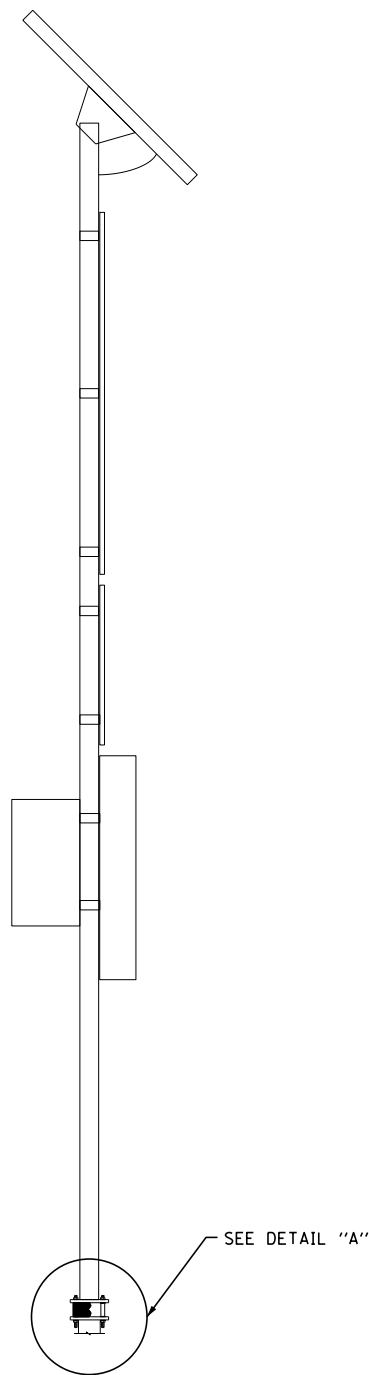
**STATE OF ILLINOIS  
DEPARTMENT OF TRANSPORTATION**

CROSS-SECTIONS			
SCALE: AS NOTED	SHEET NO.	OF SHEETS	STA. TO STA.

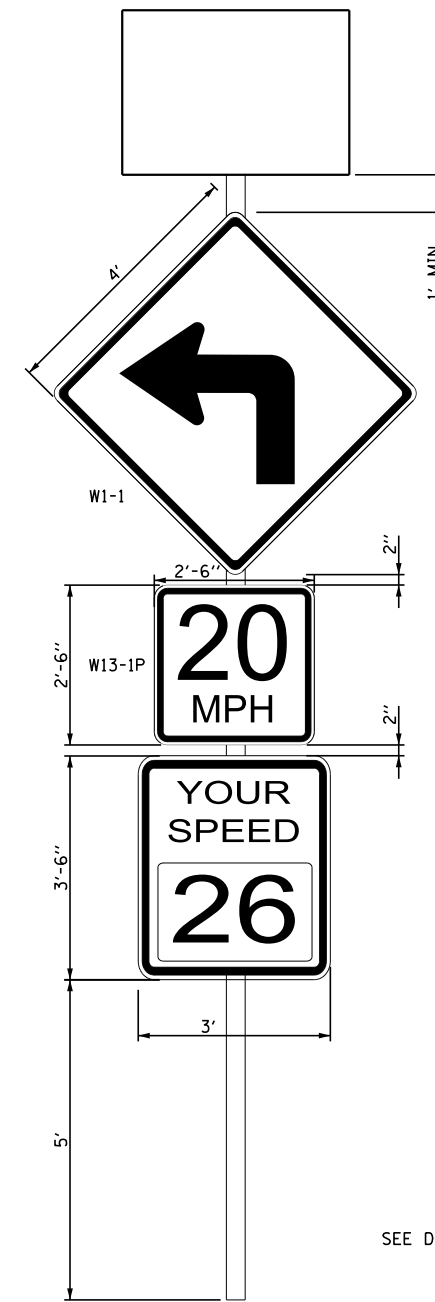
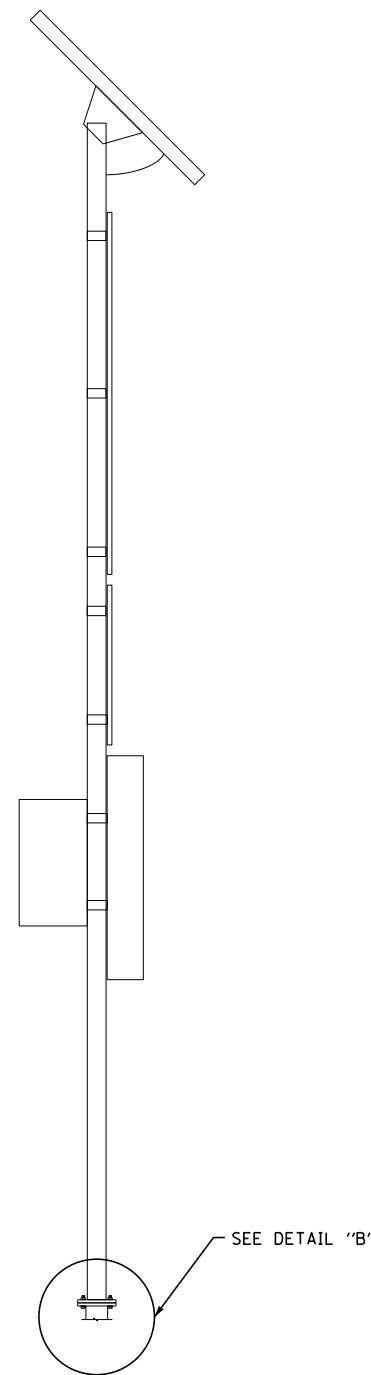
F.A.P OR F.A.U. RTE.	SECTION	COUNTY	TOTAL SHEETS	SHEET NO.
VARIOUS	2015-0541	COOK & WILL	13	10
				CONTRACT NO. 62B22
ILLINOIS FED. AID PROJECT				



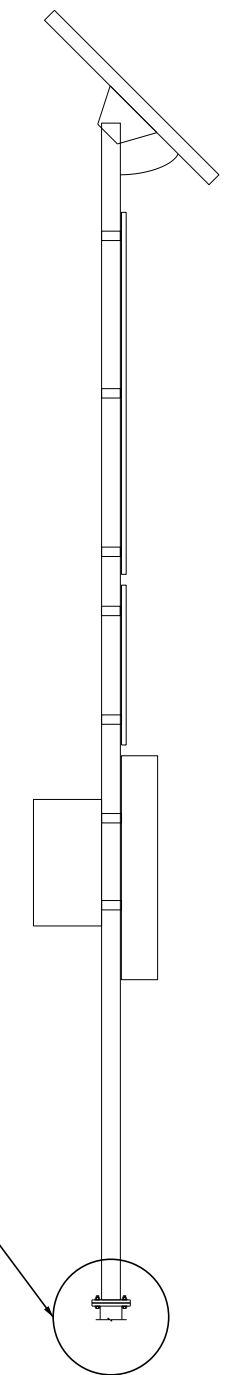
I-55 TO ARSENAL ROAD  
NOT TO SCALE



NB I-55 TO NB I-294  
NOT TO SCALE



EB I-290 TO EB IL-64/US-20  
NOT TO SCALE



J:\140601\Task\_Order\ADCON\CADD\_Sheets\IL\140601\140601-11.dwg  
 07-DEC-2015 09:32:28 TIME\$



USER NAME = mgravida	DESIGNED - RS	REVISED -
PLOT SCALE = 3.000000:1.000000	DRAWN - CN	REVISED -
PLOT DATE = 07-DEC-2015 19:32	CHECKED - KGP	REVISED -
	DATE - 12/07/2015	REVISED -

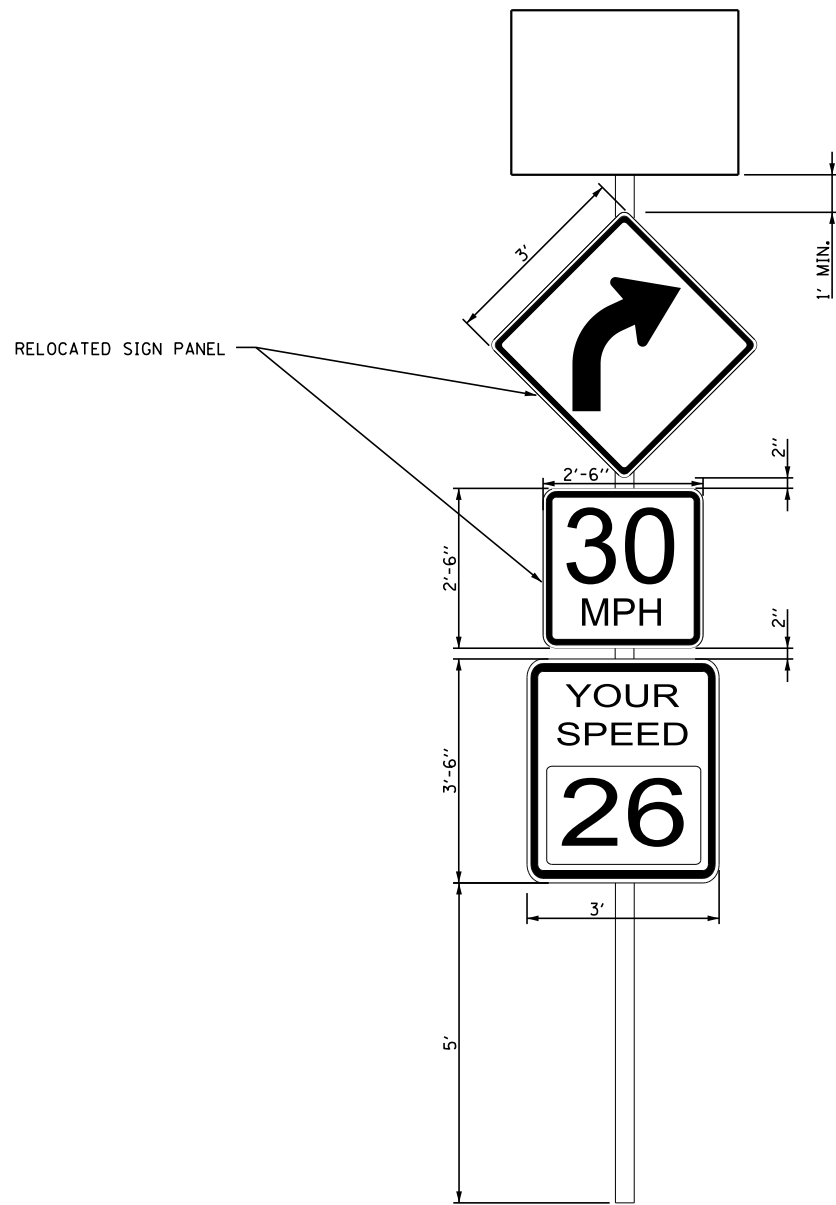
STATE OF ILLINOIS  
DEPARTMENT OF TRANSPORTATION

DETAILS

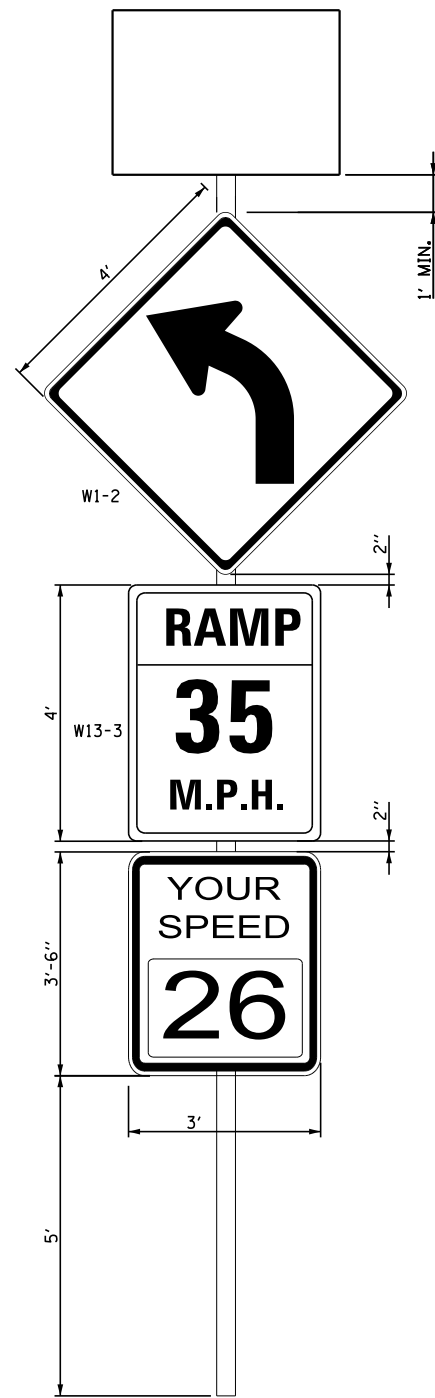
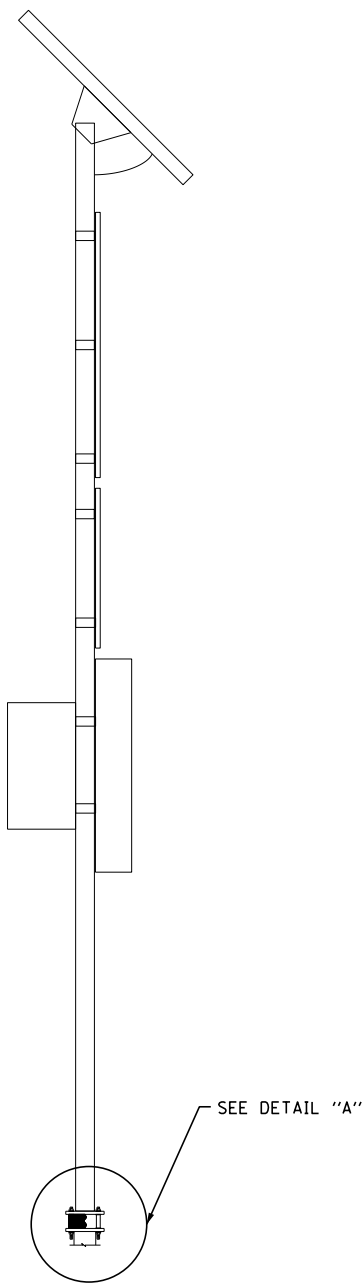
SCALE: AS NOTED	SHEET NO.	OF SHEETS	STA.	TO STA.
-----------------	-----------	-----------	------	---------

F.A.P OR F.A.U. RTE.	SECTION	COUNTY	TOTAL SHEETS	SHEET NO.
VARIOUS	2015-0541	COOK & WILL	13	11
CONTRACT NO. 62B22				
ILLINOIS FED. AID PROJECT				

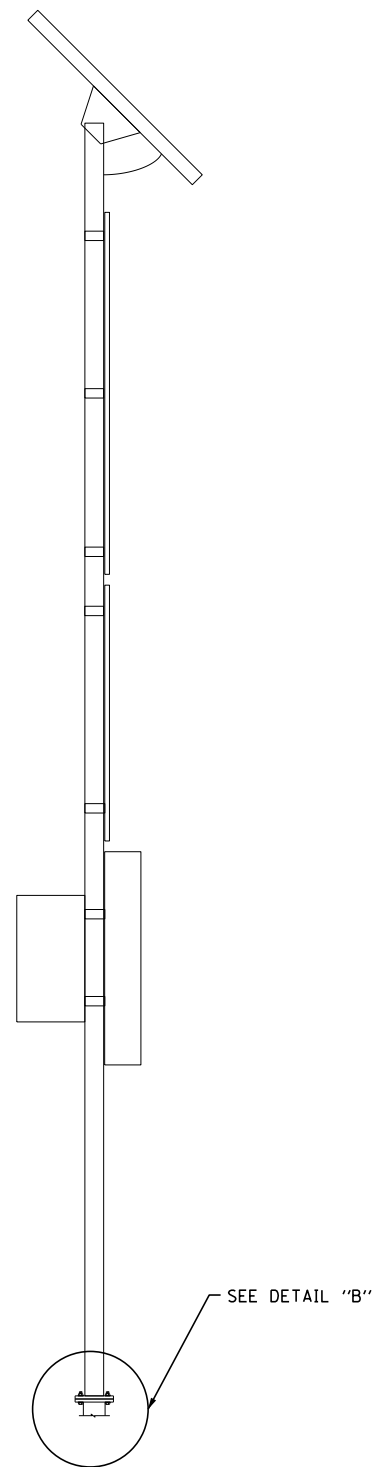
J:\140601\Task\_Order\INDCN\CADD\_Sheets\12.DIG2B22-sht-details02.dgn  
 07-DEC-2015 09:32:28 TIME\$



NB IL-53 TO EB LAKE COOK RD  
NOT TO SCALE



NB IL-53 TO WB LAKE COOK RD  
NOT TO SCALE



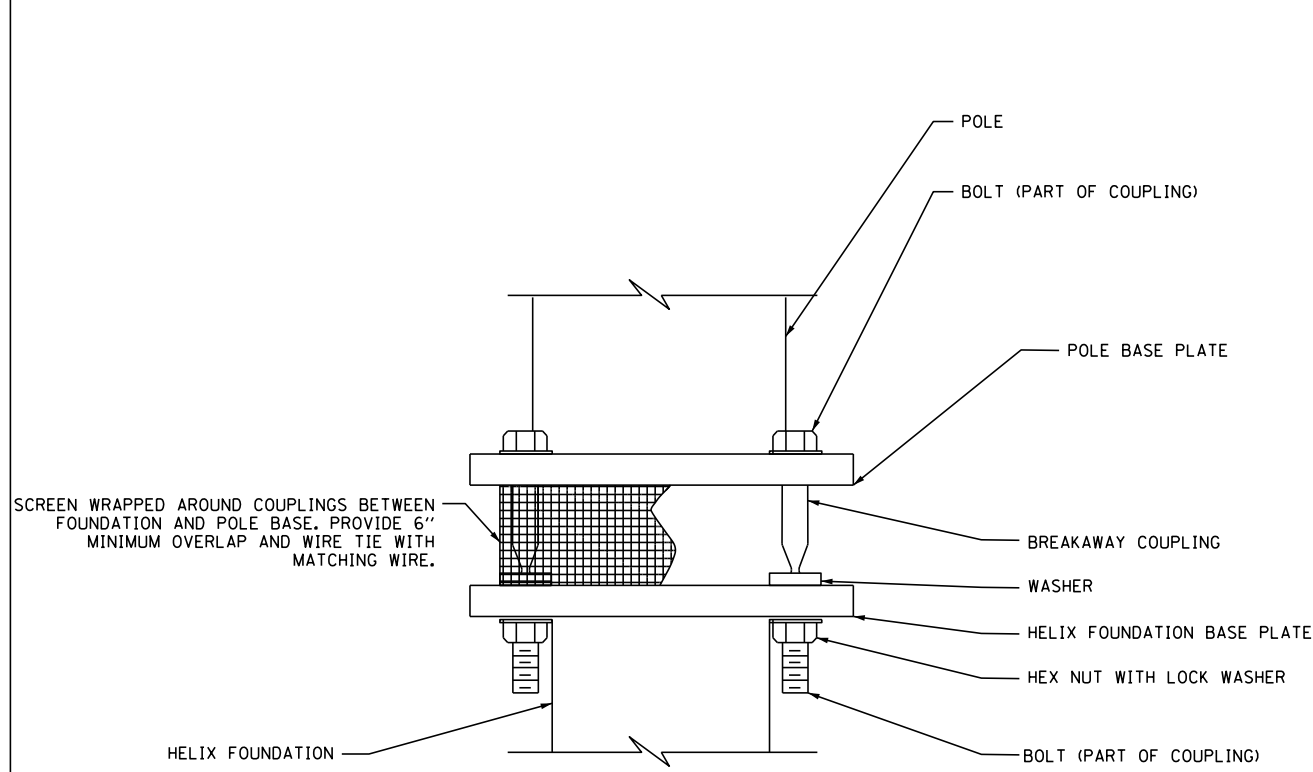
USER NAME = mgravida	DESIGNED - RS	REVISED -
PLOT SCALE = 3.000000:1.000000	DRAWN - CN	REVISED -
PLOT DATE = 07-DEC-2015 19:32	CHECKED - KGP	REVISED -
	DATE - 12/07/2015	REVISED -

STATE OF ILLINOIS  
DEPARTMENT OF TRANSPORTATION

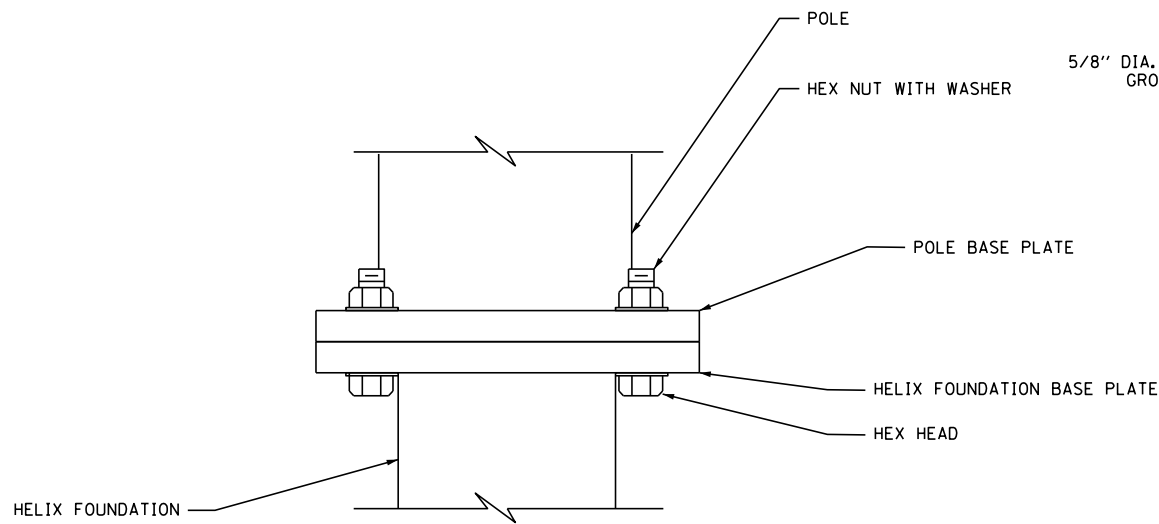
DETAILS

SCALE: AS NOTED	SHEET NO.	OF SHEETS	STA.	TO STA.
-----------------	-----------	-----------	------	---------

F.A.P OR F.A.U. RTE.	SECTION	COUNTY	TOTAL SHEETS	SHEET NO.
VARIOUS	2015-0541	COOK & WILL	13	12
				CONTRACT NO. 62B22
ILLINOIS FED. AID PROJECT				



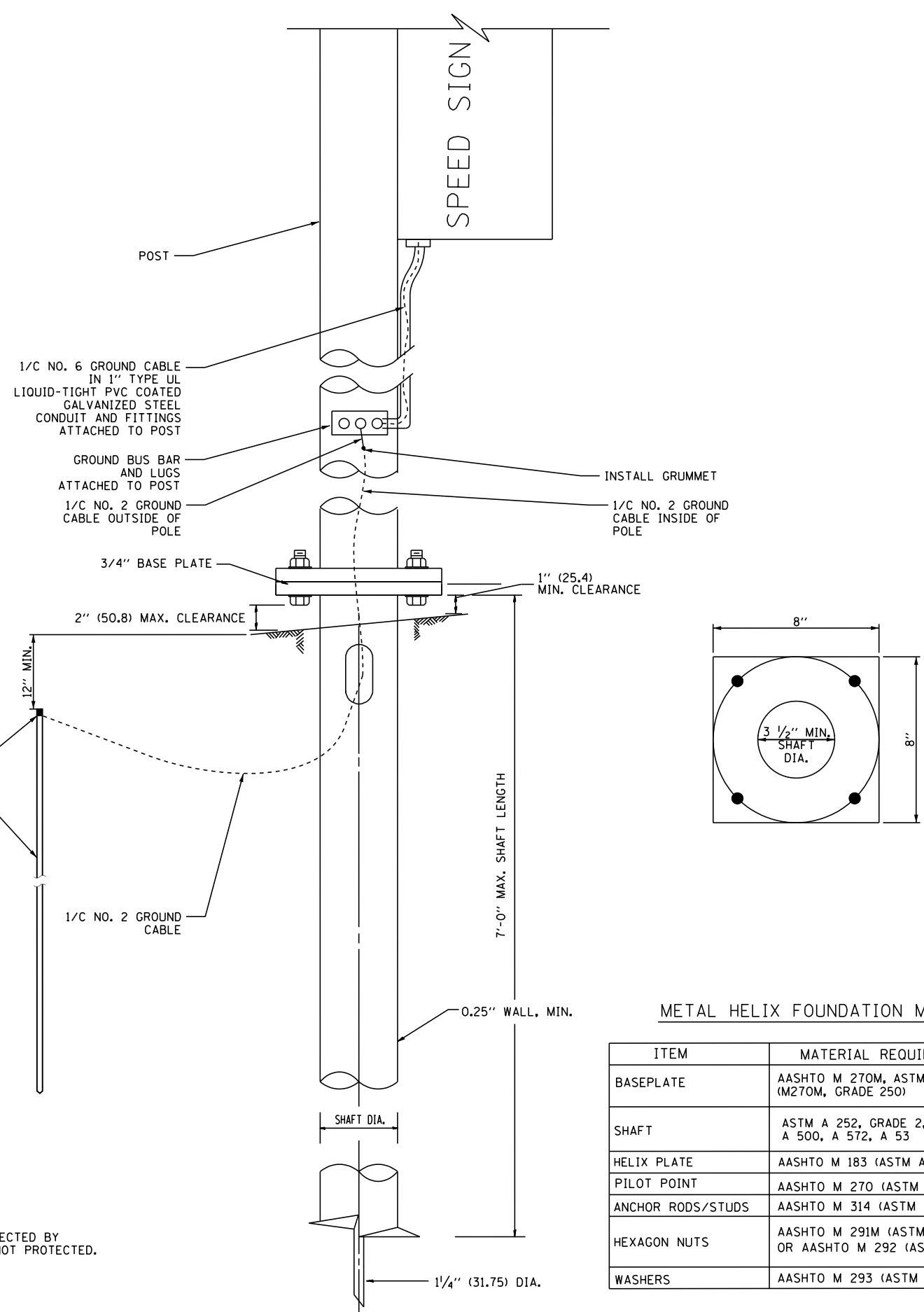
BREAKAWAY COUPLINGS ON METAL FOUNDATION-DETAIL A



DETAIL B

**NOTE:**

- 1) DETAIL B SHALL BE USED WHEN POLE IS PROTECTED BY BARRIER OF GUARDRAIL. USE DETAIL A WHEN NOT PROTECTED.



METAL HELIX FOUNDATION MATERIALS

ITEM	MATERIAL REQUIREMENT
BASEPLATE	AASHTO M 270M, ASTM GRADE A36 (M270M, GRADE 250)
SHAFT	ASTM A 252, GRADE 2, A 500, A 572, A 53
HELIX PLATE	AASHTO M 183 (ASTM A 635), A 572, GRADE 50
PILOT POINT	AASHTO M 270 (ASTM A 575)
ANCHOR RODS/STUDS	AASHTO M 314 (ASTM F 1554)
HEXAGON NUTS	AASHTO M 291M (ASTM A 563) GRADE DH, OR AASHTO M 292 (ASTM A 194) GRADE 2H
WASHERS	AASHTO M 293 (ASTM F 436)

J:\140601\Task\_Order\INDCN\CADD\_Sheets\13.DWG2B22-shf-detailed03.dgn  
 07-DEC-2015 09:32:28 TIME\$



USER NAME = mgravida	DESIGNED - RS	REVISED -
PLOT SCALE = 3.000000:1.000000	DRAWN - CN	REVISED -
PLOT DATE = 07-DEC-2015 19:32	CHECKED - KGP	REVISED -
	DATE - 12/07/2015	REVISED -

STATE OF ILLINOIS  
DEPARTMENT OF TRANSPORTATION

DETAILS

SCALE: AS NOTED SHEET NO. OF SHEETS STA. TO STA.

F.A.P OR F.A.U. RTE.	SECTION	COUNTY	TOTAL SHEETS	SHEET NO.
VARIOUS	2015-0541	COOK & WILL	13	13
CONTRACT NO. 62B22			ILLINOIS FED. AID PROJECT	