

03-04-2016 LETTING ITEM 018

STATE OF ILLINOIS
DEPARTMENT OF TRANSPORTATION
DIVISION OF HIGHWAYS

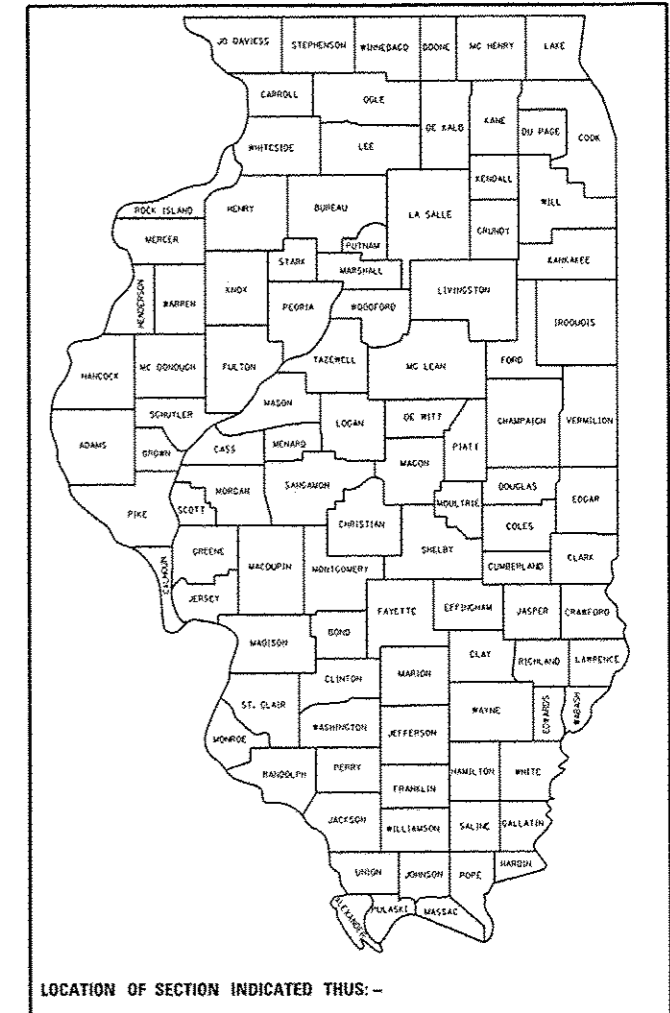
**PROPOSED
HIGHWAY PLANS**

ROUTE: VARIOUS ROUTES
VARIOUS STRUCTURES
SECTION: 2015-072I
BRIDGE DECK SEALING
COOK COUNTY
C-91-057-15

SEE LOCATION MAPS
SHEETS 5 - 6

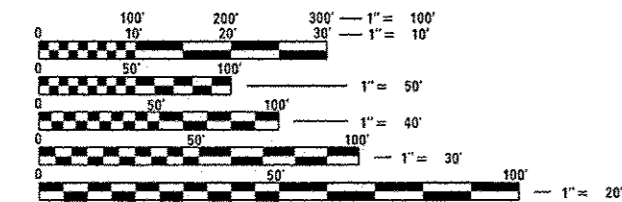
F. A. RTE.	SECTION	COUNTY	TOTAL SHEETS	SHEET NO.
VARIOUS	2015-072I	COOK	22	1
ILLINOIS			CONTRACT NO. 62B56	

D-91-057-15



FOR INDEX OF SHEETS, SEE SHEET NO. 2

IMPROVEMENTS ARE LOCATED IN THE VILLAGES OF MELROSE PARK, WILLOW SPRINGS, HODGKINS AND SCHILLER PARK.



FULL SIZE PLANS HAVE BEEN PREPARED USING STANDARD ENGINEERING SCALES. REDUCED SIZED PLANS WILL NOT CONFORM TO STANDARD SCALES. IN MAKING MEASUREMENTS ON REDUCED PLANS, THE ABOVE SCALES MAY BE USED.

J.U.L.I.E.
JOINT UTILITY LOCATION INFORMATION FOR EXCAVATION
1-800-892-0123
OR 811

PROJECT MANAGER - ISSAM RAYYAN (847) 705-4178
PROJECT ENGINEER - J. ALAIN MIDY (847) 221-3056

CONTRACT NO. 62B56

STATE OF ILLINOIS
DEPARTMENT OF TRANSPORTATION
DIVISION OF HIGHWAYS

SUBMITTED December 15, 2015

John P. ...
DEPUTY DIRECTOR OF HIGHWAYS, REGION/ENGINEER

Jan 29, 2016
Maurice M. Addis PE
ENGINEER OF DESIGN AND ENVIRONMENT

Jan 29, 2016
Chris ...
DIRECTOR OF HIGHWAYS, CHIEF ENGINEER

PRINTED BY THE AUTHORITY
OF THE STATE OF ILLINOIS

INDEX OF SHEETS

SHEET NO.	DESCRIPTION
1	TITLE SHEET
2	INDEX OF SHEETS, STATE STANDARDS, AND GENERAL NOTES
3	SUMMARY OF QUANTITIES
4	SCHEDULE OF QUANTITIES
5 - 6	LOCATION MAPS
7-9	EXISTING BRIDGE PLANS (LOCATION NO. 1, SN 016-1011)
10-11	EXISTING BRIDGE PLANS (LOCATION NO. 2, SN 016-2406)
12-13	EXISTING BRIDGE PLANS (LOCATION NO. 3, SN 016-2407)
14-16	EXISTING BRIDGE PLANS (LOCATION NO. 4, SN 016-2815)
17-20	EXISTING BRIDGE PLANS (LOCATION NO. 5, SN 016-0337)
21	TRAFFIC CONTROL AND PROTECTION FOR SIDE ROADS, INTERSECTIONS, AND DRIVEWAYS (TC-10)
22	ARTERIAL ROAD INFORMATION SIGN (TC-22)

LIST OF STATE STANDARDS

STANDARD NO.	DESCRIPTION
701301-04	LANE CLOSURE, 2L, 2W, SHORT TIME OPERATIONS
701501-06	URBAN LANE CLOSURE, 2L, 2W, UNDIVIDED
701601-09	URBAN LANE CLOSURE, MULTILANE, 1W OR 2W WITH NONTRAVERSABLE MEDIAN
701801-05	SIDEWALK, CORNER OR CROSSWALK CLOSURE
701901-04	TRAFFIC CONTROL DEVICES

GENERAL NOTES

BEFORE STARTING ANY EXCAVATION, THE CONTRACTOR SHALL CALL "J.U.L.I.E." AT 1-800-892-0123 OR 811 FOR FIELD LOCATIONS OF BURIED ELECTRIC, TELEPHONE AND GAS FACILITIES. 48 HOURS NOTIFICATION IS REQUIRED.

THE CONTRACTOR SHALL COORDINATE CONSTRUCTION ACTIVITIES WITH UTILITY COMPANIES AND THE VILLAGES OF MELROSE PARK, WILLOW SPRINGS, HODGKINS AND SCHILLER PARK.

THE CONTRACTOR SHALL TAKE NECESSARY PRECAUTIONS TO INSURE THAT NO DEBRIS WILL ENDANGER OR INTERFERE WITH TRAFFIC ON THE ROADWAY (OR THE RAILROAD) BENEATH THE BRIDGE ACCORDING TO ARTICLE 107.09 (OR 107.12) OF THE STANDARD SPECIFICATIONS. THIS WORK WILL NOT BE PAID FOR SEPERATELY, BUT SHALL BE INCLUDED IN THE CONTRACT UNIT PRICE FOR THE APPROPRIATE PAY ITEM INVOLVED AND NO ADDITIONAL COMPENSATION WILL BE ALLOWED.

THE CONTRACTOR SHALL BE REQUIRED TO PROVIDE ACCESS TO ABUTTING PROPERTY AT ALL TIMES DURING THE CONSTRUCTION OF THIS PROJECT.

IT SHALL BE THE CONTRACTOR'S RESPONSIBILITY TO VERIFY ALL DIMENSIONS AND CONDITIONS EXISTING IN THE FIELD PRIOR TO CONSTRUCTION AND ORDERING OF MATERIALS.

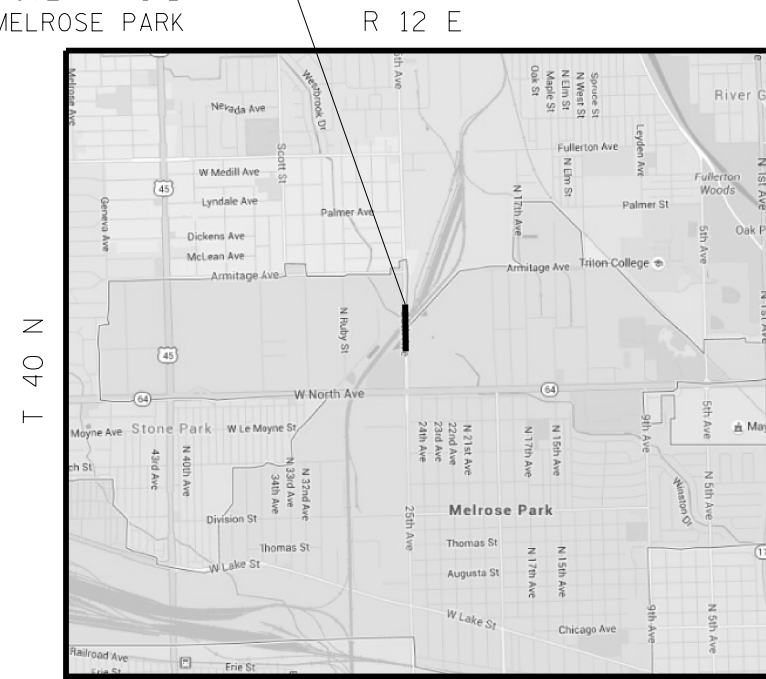
THE RESIDENT ENGINEER SHALL CONTACT THE DISTRICT ONE TRAFFIC CONTROL SUPERVISOR AT (847) 705-4470, A MINIMUM OF 72 HOURS PRIOR TO THE INSTALLATION OF ANY TEMPORARY TRAFFIC CONTROL DEVICES

DO NOT SCALE PLANS FOR CONSTRUCTION DIMENSIONS

FILE NAME :	USER NAME : guillaumfp	DESIGNED -	REVISED -	STATE OF ILLINOIS DEPARTMENT OF TRANSPORTATION	INDEX OF SHEETS, STATE STANDARDS & GENERAL NOTES	VAR.	SECTION	COUNTY	TOTAL SHEETS	SHEET NO.	
p:\11004601\INTEG\Illinois.gov\PKIDOT\Documents\DOT Offices\District 1\Projects\01057\Drawings\Design\0105716-Design.dgn	PLOT SCALE : 100.0000' / in.	CHECKED -	REVISED -			VAR.	2015-0721	COOK	22	2	
Default	PLOT DATE : 12/23/2015	DATE -	REVISED -			CONTRACT NO. 62856					
						SCALE:	SHEET	OF	SHEETS	STA.	TO

	SN 016-1011	SN 016-2406	SN 016-2407	SN 016-2815	SN 016-0337
LOCATION	1	2	3	4	5
BRIDGE DECK CONCRETE SEALER (SQ FT)	94,881	63,611	121,249	104,407	142,208
TRAFFIC CONTROL AND PROTECTION, STANDARD 701601	.2	.2	.2	.2	.2
TRAFFIC CONTROL AND PROTECTION, STANDARD 701801	.5			.5	

LOCATION 1: SN 016-1011
25TH AVENUE OVER RR-IHB
VILLAGE OF MELROSE PARK

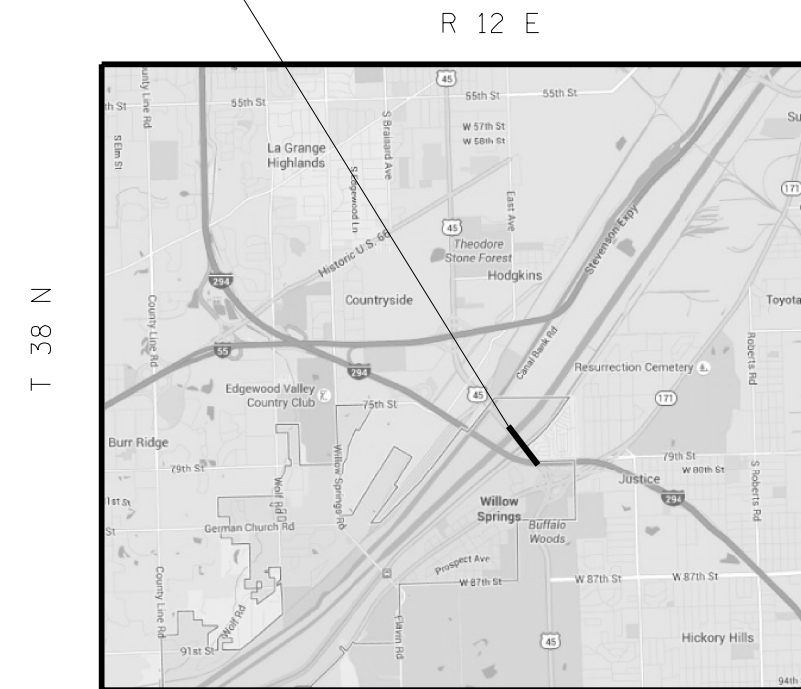


LEYDEN TOWNSHIP
MAP 1

TRAFFIC DATA

2014 ADT = 18,400
POSTED SPEED LIMIT = 35 MPH

LOCATION 2: SN 016-2406
US 12,20,45 SB OVER RR - CN & CANALS
VILLAGE OF WILLOW SPRINGS

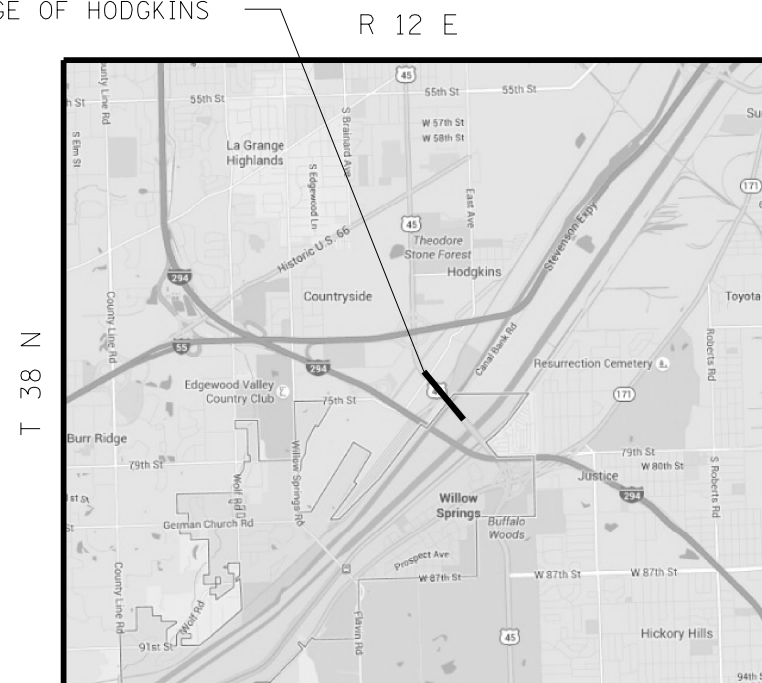


LYONS TOWNSHIP
MAP 2

TRAFFIC DATA

2013 ADT = 38,100
POSTED SPEED LIMIT = 45 MPH

LOCATION 3: SN 016-2407
US 12,20,45 SB OVER SANTA FE DR ET AL
VILLAGE OF HODGKINS



LYONS TOWNSHIP
MAP 3

TRAFFIC DATA

2013 ADT = 38,100
POSTED SPEED LIMIT = 45 MPH

FILE NAME =	USER NAME = guilloumfp	DESIGNED -	REVISED -
p:\11\084EBIDINTEG.illinois.gov\PIWIDOT Documents\DOT Offices\District 1\Projects\DI05716\Design\DI05716-Design.dgn		DRAWN -	REVISED -
Default	PLOT SCALE = 100.0000' / in.	CHECKED -	REVISED -
	PLOT DATE = 12/23/2015	DATE -	REVISED -

**STATE OF ILLINOIS
DEPARTMENT OF TRANSPORTATION**

LOCATION MAPS 1 - 3				
SCALE:	SHEET	OF	SHEETS	STA. TO STA.

VAR.	SECTION	COUNTY	TOTAL SHEETS	SHEET NO.
VAR.	2015-0721	COOK	22	5
CONTRACT NO. 62B56				
ILLINOIS FED. AID PROJECT				

R 12 E

LOCATION 4: SN 016-2815
 US 12,45 MANNHEIM RD OVER RR - METRA, CP, RDS
 VILLAGE OF SCHILLER PARK



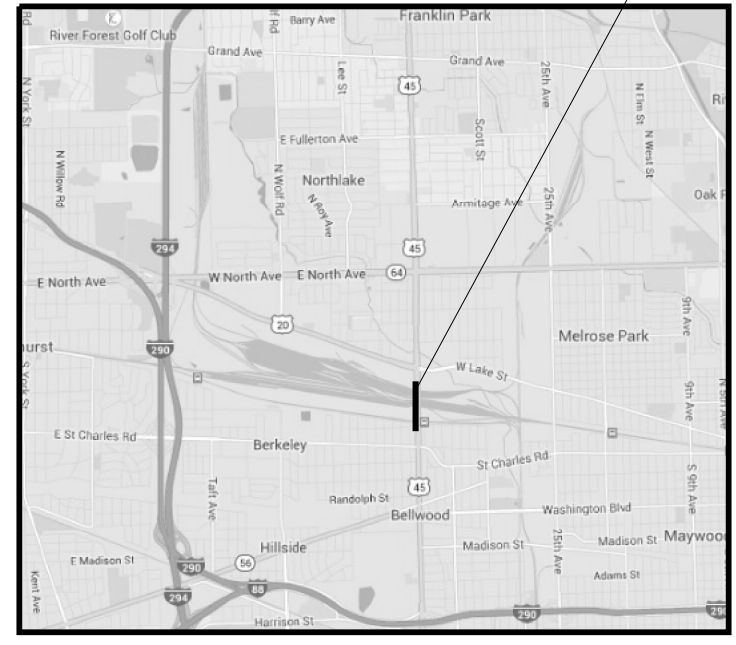
TRAFFIC DATA

2013 ADT = 43,000
 POSTED SPEED LIMIT = 40 MPH

LEYDEN TOWNSHIP
 MAP 4

R 12 E

LOCATION 5: SN 016-0337
 US 12,20,45 MANNHEIM RD OVER RR - UP PROVISO YD
 VILLAGE OF MELROSE PARK



TRAFFIC DATA

2013 ADT = 23,700
 POSTED SPEED LIMIT = 35 MPH

PROVISO TOWNSHIP
 MAP 5

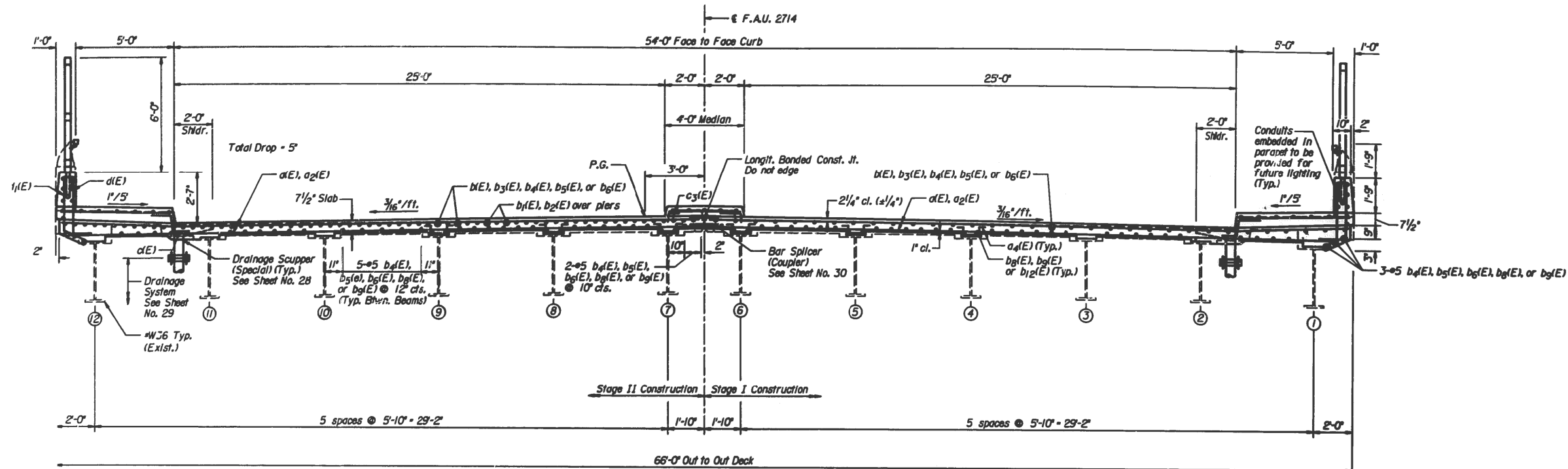
FILE NAME =	USER NAME = guilleumefp	DESIGNED -	REVISED -
pw:\IL\084EBIDINTEG\illinois.gov\PIDOT\Documents\DOT Offices\District 1\Projects\1057\Drawings\Design\105716-Design.dgn		REVISED -	
Default	PLOT SCALE = 100.0000' / in.	CHECKED -	REVISED -
	PLOT DATE = 12/23/2015	DATE -	REVISED -

**STATE OF ILLINOIS
 DEPARTMENT OF TRANSPORTATION**

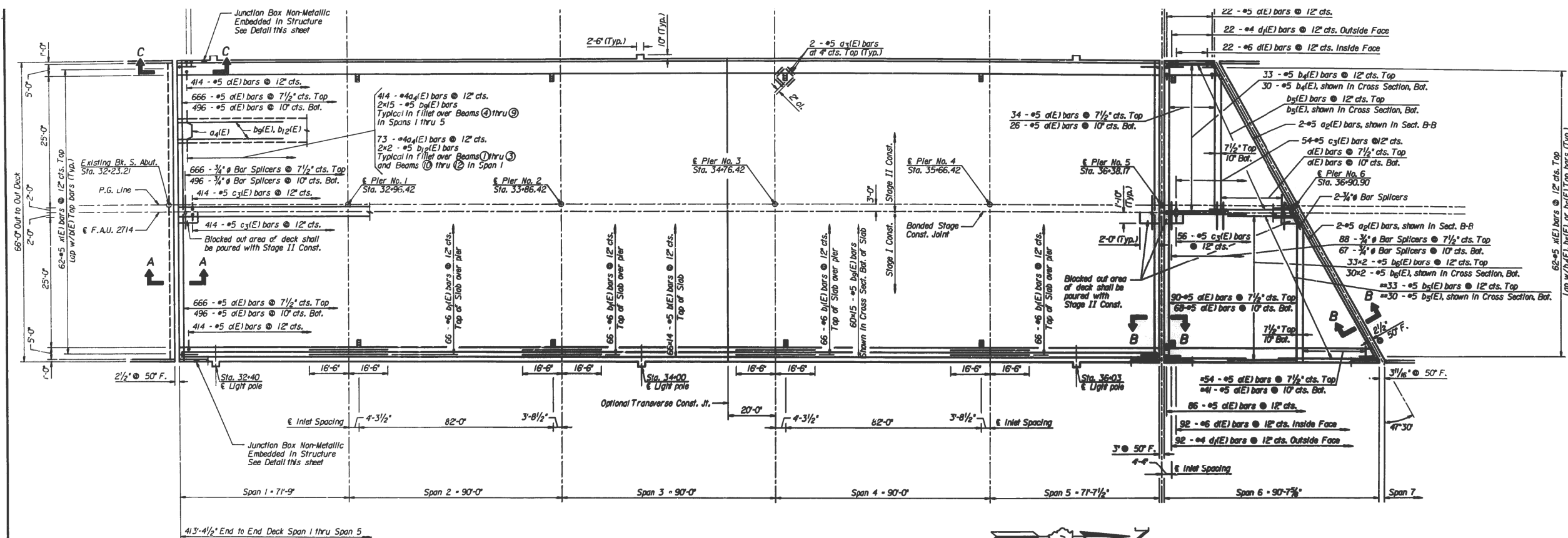
LOCATION MAPS 4 - 5

SCALE: SHEET OF SHEETS STA. TO STA.

VAR.	SECTION	COUNTY	TOTAL SHEETS	SHEET NO.
VAR.	2015-0721	COOK	22	6
			CONTRACT NO. 62B56	
ILLINOIS FED. AID PROJECT				



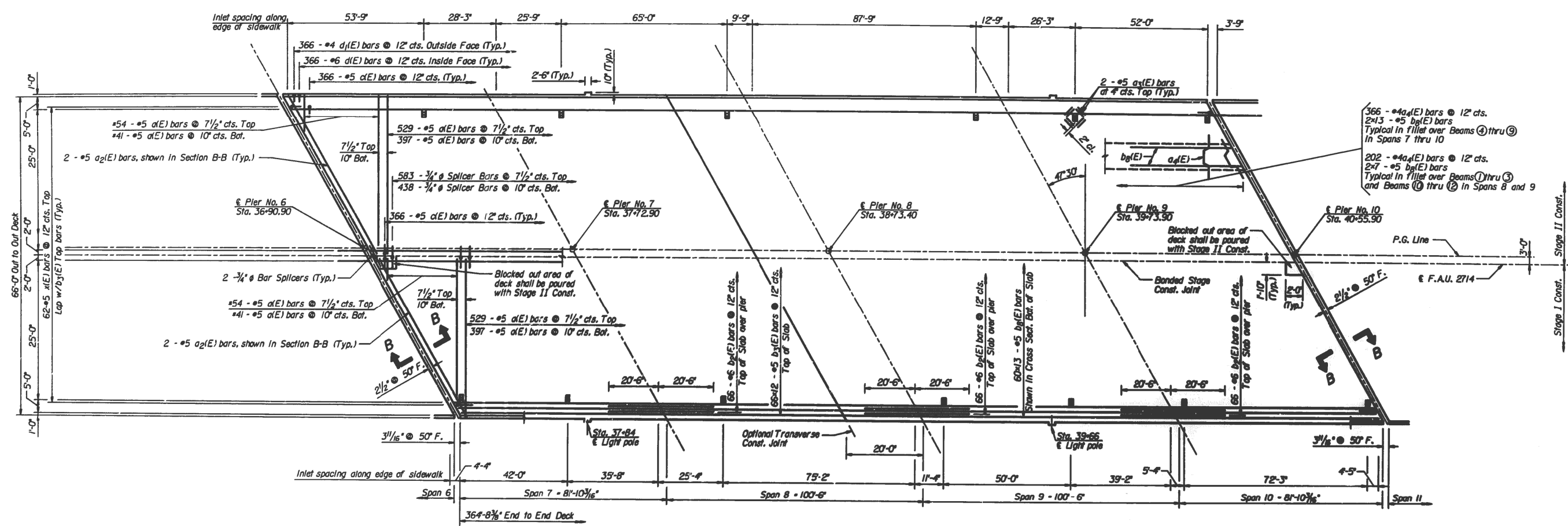
CROSS SECTION
(Looking North)



PLAN
Minimum Bar Laps #5 bars - 2'-2"

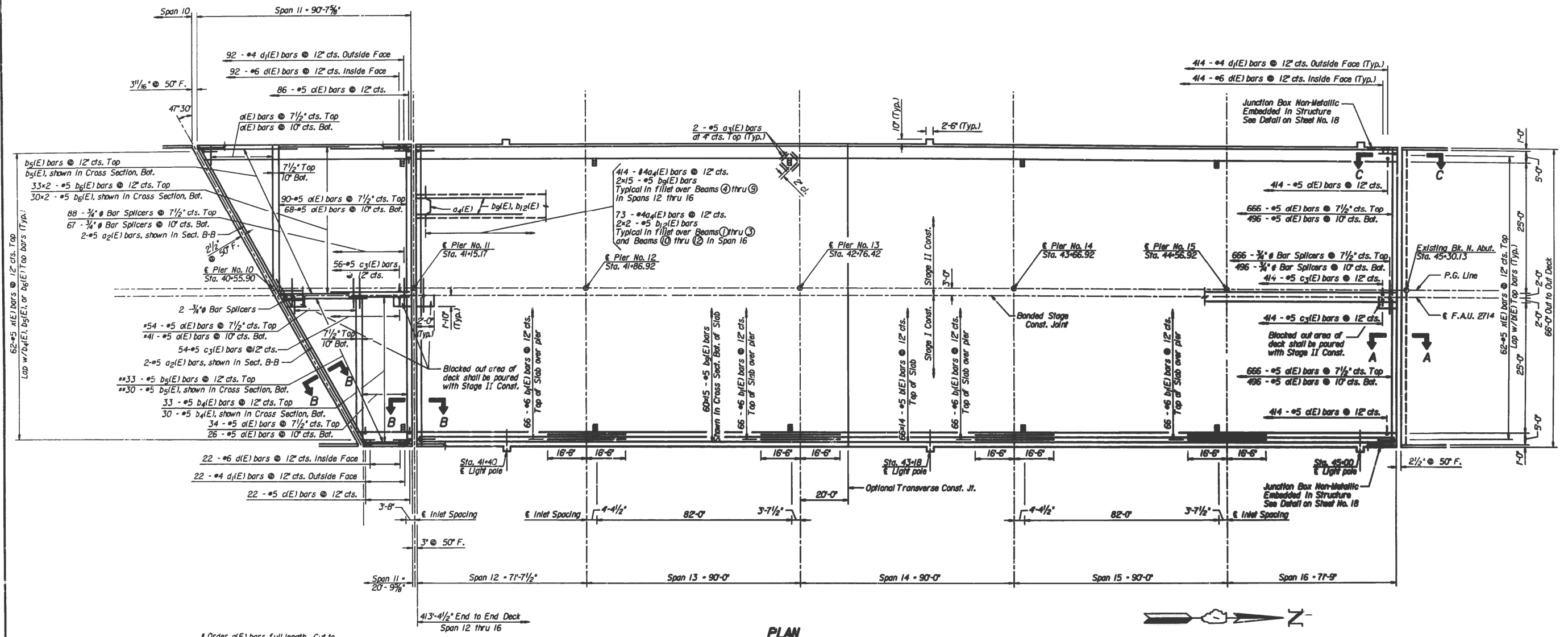
FOR INFORMATION ONLY

FILE NAME =	USER NAME = guillaumejp	DESIGNED -	REVISED -	STATE OF ILLINOIS DEPARTMENT OF TRANSPORTATION	LOCATION #1 (SN 016-1011) 25TH AVE. OVER RR - IHB		VAR.	SECTION	COUNTY	TOTAL SHEETS	SHEET NO.
pw\11084EBIDINTEG\illinois.gov\PIWIDOT\Documents\DOT Offices\District 1\Projects\DI05716\Design\DI05716-Design.dgn		CHECKED -	REVISED -		VAR.	2015-0721	COOK	22	7		
Default	PLOT SCALE = 100.0000' / in.	DATE -	REVISED -		SCALE: SHEET 1 OF 3 SHEETS STA. TO STA.			CONTRACT NO. 62B56			
	PLOT DATE = 12/23/2015				ILLINOIS FED. AID PROJECT						



PLAN
Minimum Bar Laps #5 bars - 2'-2"

FILE NAME =	USER NAME = guillaumejp	DESIGNED -	REVISED -	STATE OF ILLINOIS DEPARTMENT OF TRANSPORTATION	LOCATION #1 (SN 016-1011) 25TH AVE. OVER RR - IHB	VAR.	SECTION	COUNTY	TOTAL SHEETS	SHEET NO.	
pw\l\084EBIDINTEG\illinois.gov\PIWIDOT\Documents\DOT Offices\District 1\Projects\DI05716-Design\DI05716-Design.dgn		REVISION				VAR.	2015-0721	COOK	22	8	
Default	PLOT SCALE = 100.0000' / in.	CHECKED -	REVISED -			CONTRACT NO. 62B56					
	PLOT DATE = 12/23/2015	DATE -	REVISED -			SCALE:	SHEET 2 OF 3 SHEETS	STA.	TO STA.	ILLINOIS FED. AID PROJECT	

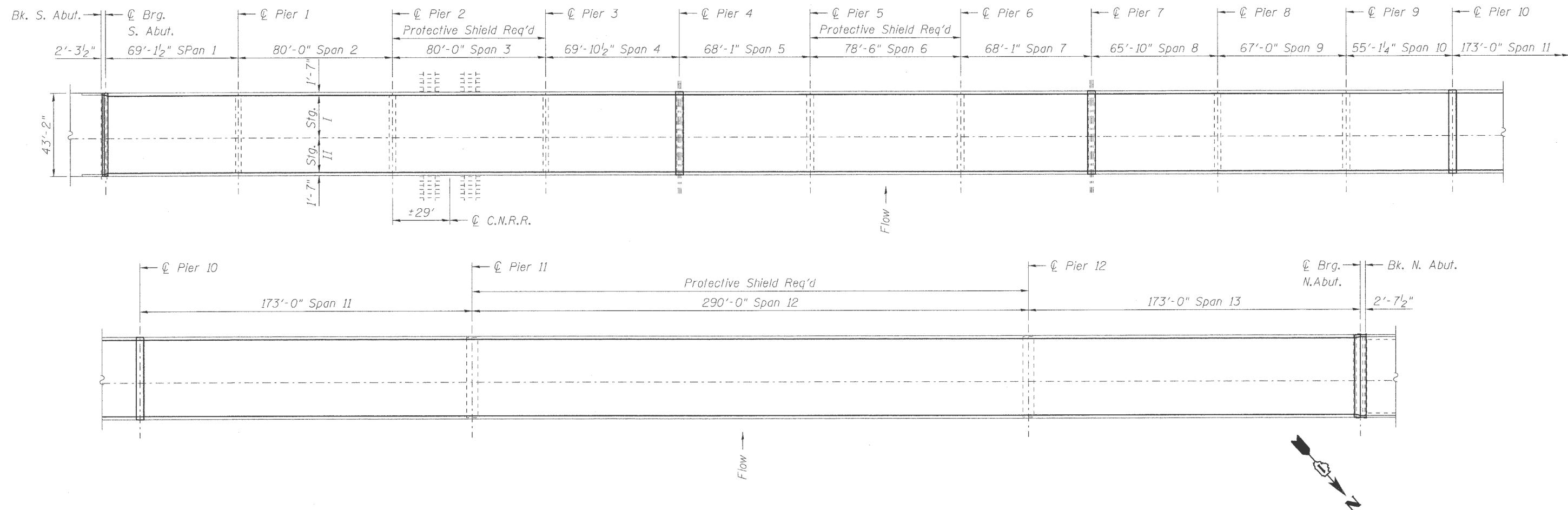


* Order a(E) bars full length. Cut to fit skew and use remainder of bars in same end, Stage II.
 ** Order b(E) bars full length. Cut to fit skew and use remainder of bars in same end, Stage II.

Notes:

PLAN
 Minimum Bar Laps #5 bars - 2'-2"

FILE NAME =	USER NAME = guillaumejp	DESIGNED -	REVISED -	STATE OF ILLINOIS DEPARTMENT OF TRANSPORTATION	LOCATION #1 (SN 016-1011) 25TH AVE. OVER RR - IHB	VAR.	SECTION	COUNTY	TOTAL SHEETS	SHEET NO.	
p:\1\1084EBIDINTEG\Illinois.gov\PWIDOT\Documents\DOT Offices\District 1\Projects\10857\BROWN\Design\105716-Design.dgn	PLOT SCALE = 100.0000' / in.	CHECKED -	REVISED -			VAR.	2015-0721	COOK	22	9	
Default	PLOT DATE = 12/23/2015	DATE -	REVISED -			CONTRACT NO. 62B56					
						SCALE:	SHEET 3 OF 3 SHEETS	STA.	TO STA.	ILLINOIS FED. AID PROJECT	

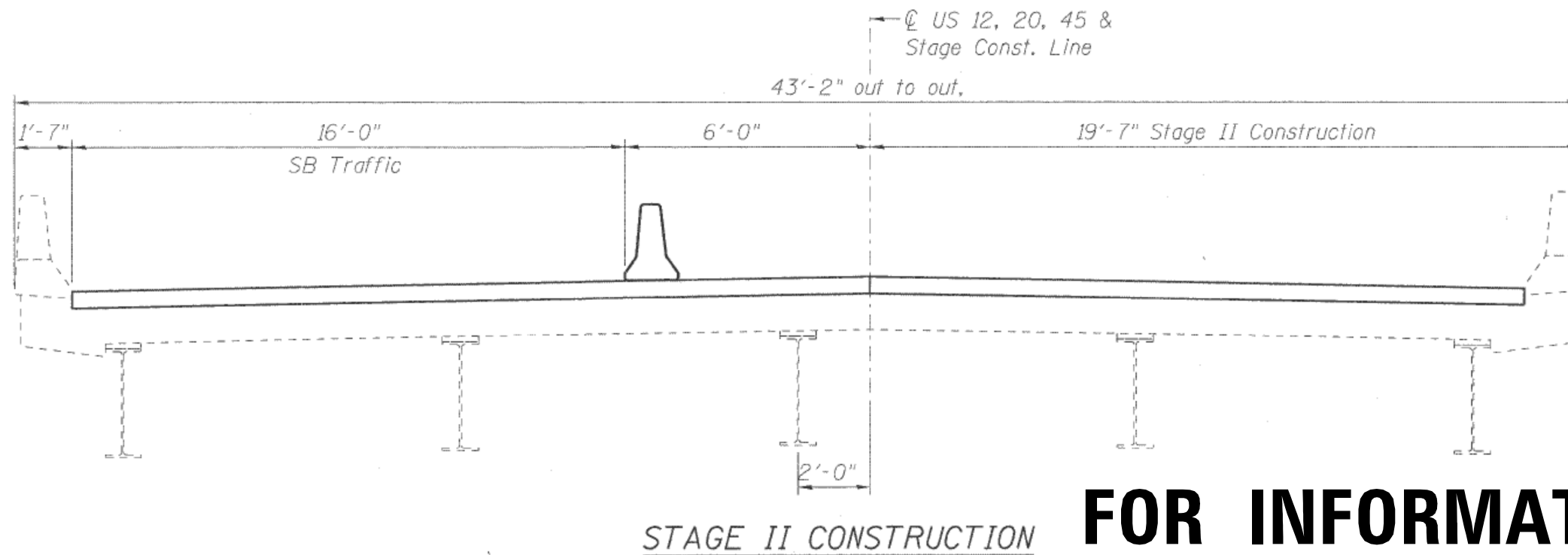
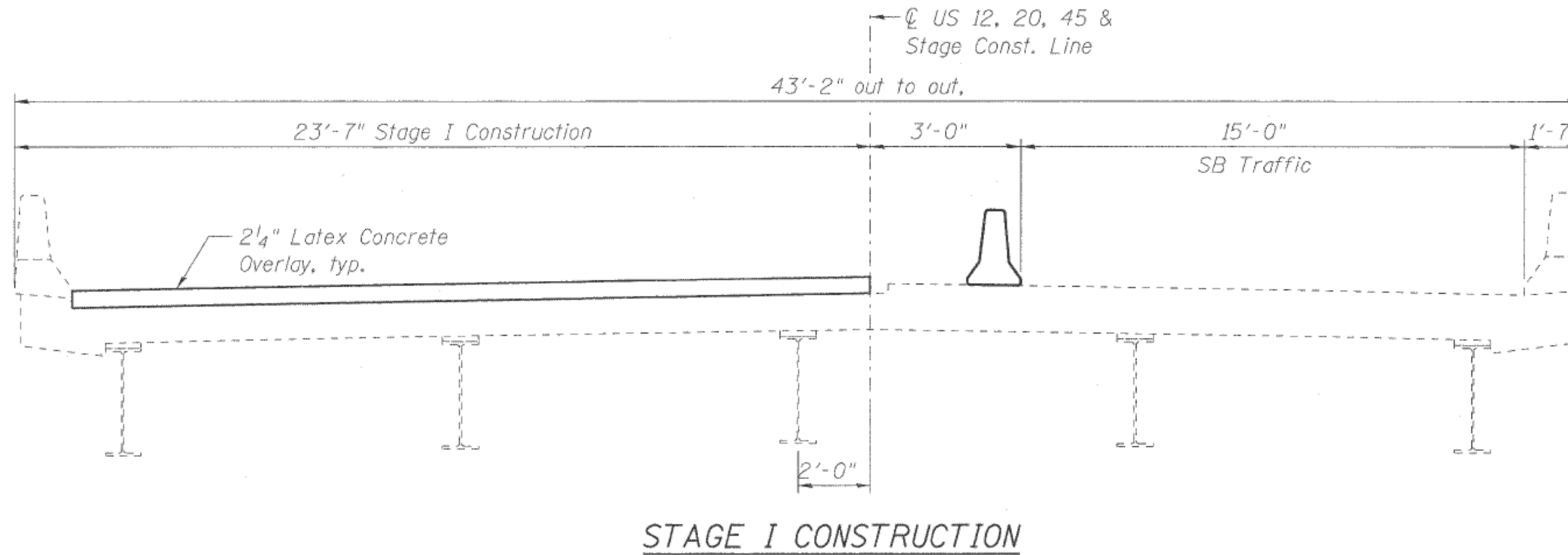


DESIGNED - SLV

PLAN

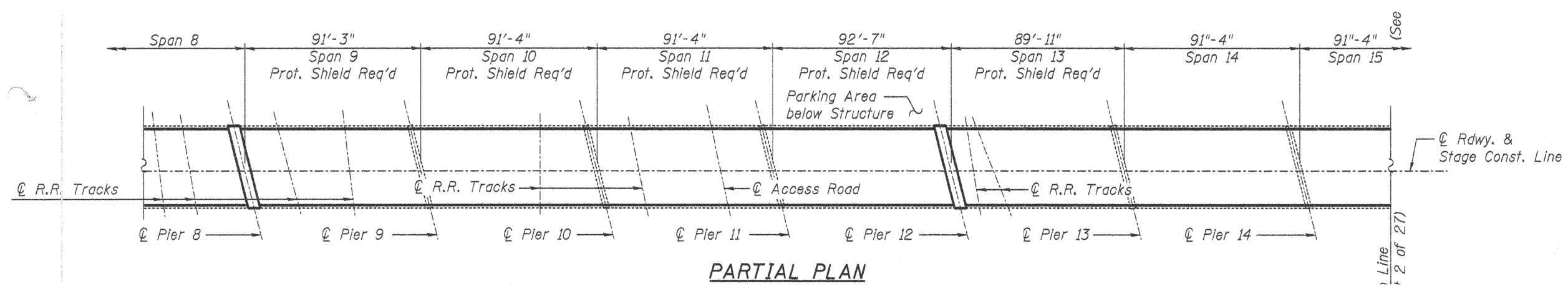
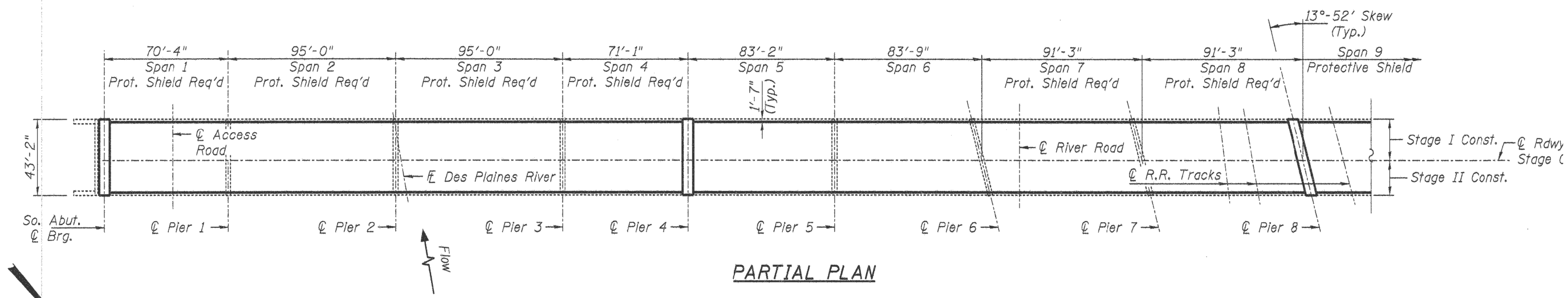
FOR INFORMATION ONLY

FILE NAME =	USER NAME = guillaumejp	DESIGNED -	REVISED -	STATE OF ILLINOIS DEPARTMENT OF TRANSPORTATION	LOCATION #2 (SN 016-2406) US 12, 20, 45 SB OVER RR - CN & CANALS	VAR.	SECTION	COUNTY	TOTAL SHEETS	SHEET NO.	
pw:\IL\084EBIDINTEG.illinois.gov\PIWIDOT\Documents\IDOT Offices\District 1\Projects\DI05716\Design\DI05716-Design.dgn		DRAWN	REVISED -			VAR.	2015-0721	COOK	22	10	
Default	PLOT SCALE = 100.0000' / in.	CHECKED -	REVISED -			CONTRACT NO. 62B56					
	PLOT DATE = 12/23/2015	DATE -	REVISED -			SCALE:	SHEET 1	OF 2 SHEETS	STA.	TO STA.	ILLINOIS FED. AID PROJECT



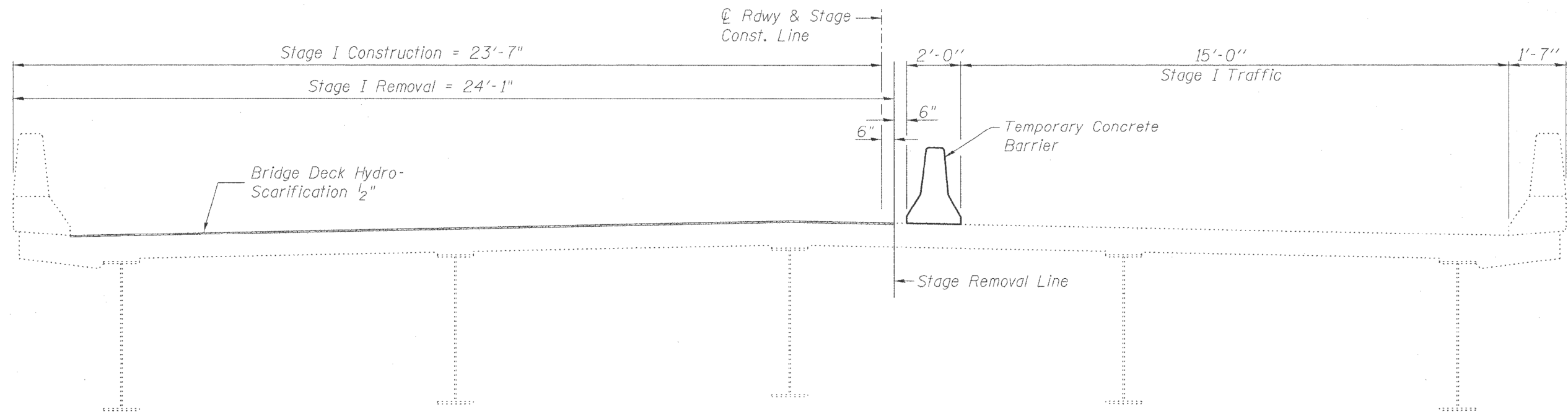
FOR INFORMATION ONLY

FILE NAME =	USER NAME = guilleumfp	DESIGNED -	REVISED -	STATE OF ILLINOIS DEPARTMENT OF TRANSPORTATION	LOCATION #2 (SN 016-2406) US 12, 20, 45 SB OVER RR - CN & CANALS	VAR.	SECTION	COUNTY	TOTAL SHEETS	SHEET NO.	
pw:\IL\084EBIDINTEG\illinois.gov\PWIDOT\Documents\DOT Offices\District 1\Projects\DI05716\Design\DI05716-Design.dgn		CHECKED -	REVISED -			VAR.	2015-0721	COOK	22	11	
Default		DATE -	REVISED -			CONTRACT NO. 62B56			ILLINOIS FED. AID PROJECT		
						SCALE:	SHEET 2 OF 2 SHEETS	STA.	TO STA.		

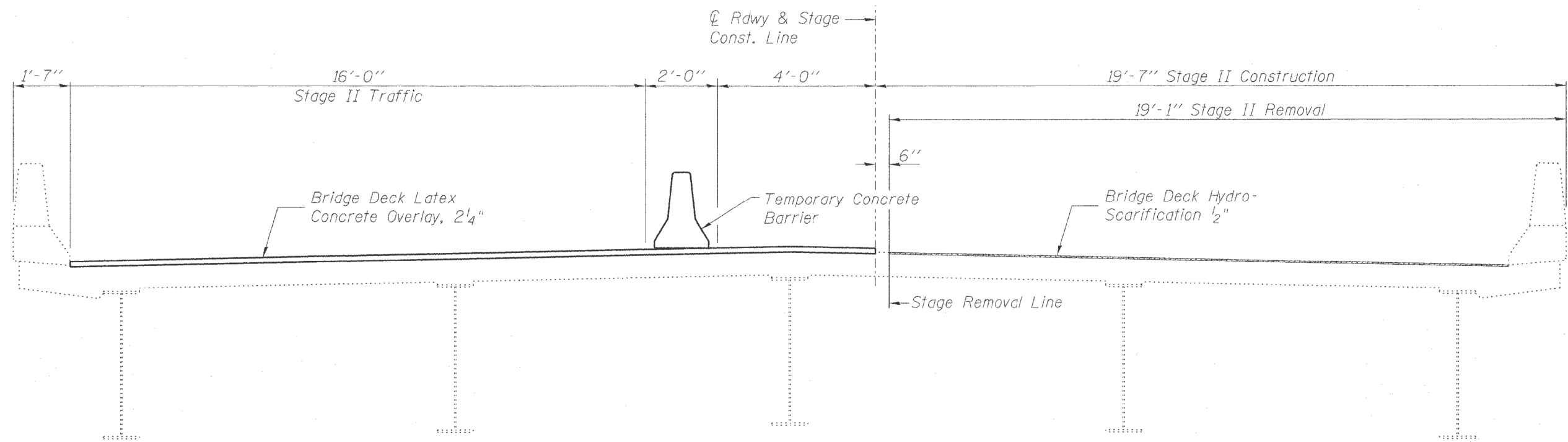


FOR INFORMATION ONLY

FILE NAME =	USER NAME = guillaumejp	DESIGNED -	REVISED -	STATE OF ILLINOIS DEPARTMENT OF TRANSPORTATION	LOCATION #3 (SN 016-2407) US 12, 20, 45 SB OVER SANTA FE DR ET AL	VAR.	SECTION	COUNTY	TOTAL SHEETS	SHEET NO.	
pw\11084EBIDINTEG\illinois.gov\PIWIDOT\Documents\DOT Offices\District 1\Projects\DI05716\Design\DI05716-Design.dgn	DRWN	REVISED -	REVISED -			VAR.	2015-0721	COOK	22	12	
Default	PLOT SCALE = 100.0000' / in.	CHECKED -	REVISED -			CONTRACT NO. 62B56					
	PLOT DATE = 12/23/2015	DATE -	REVISED -			SCALE:	SHEET 1 OF 2 SHEETS	STA.	TO STA.	ILLINOIS FED. AID PROJECT	



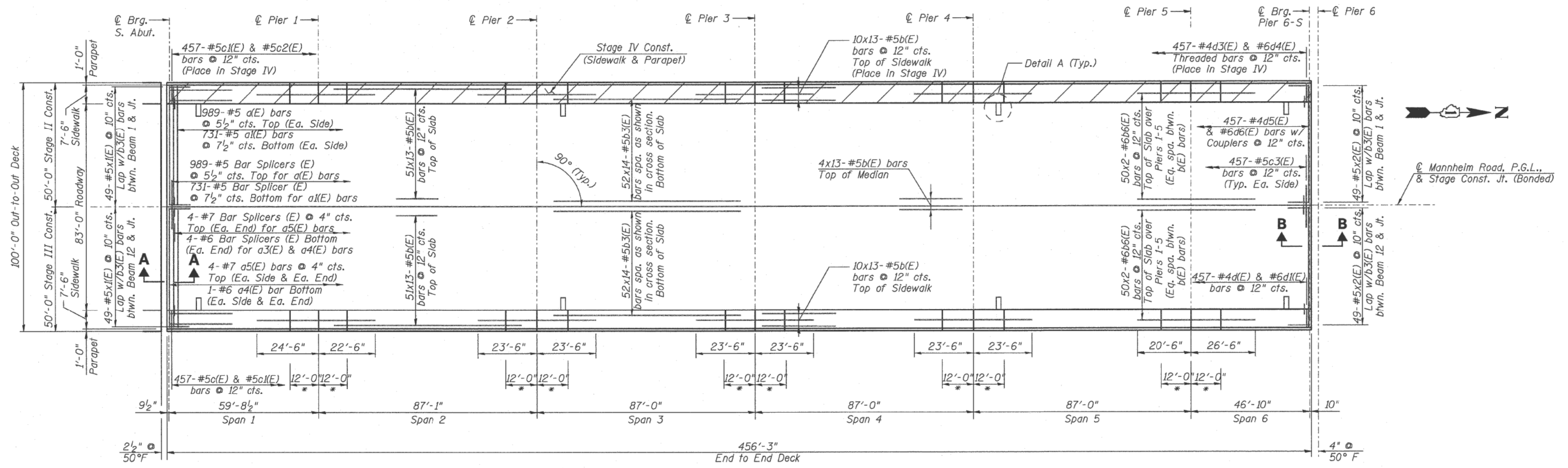
STAGE I REMOVAL & CONSTRUCTION
(Looking North)



STAGE II REMOVAL AND CONSTRUCTION
(Looking North)

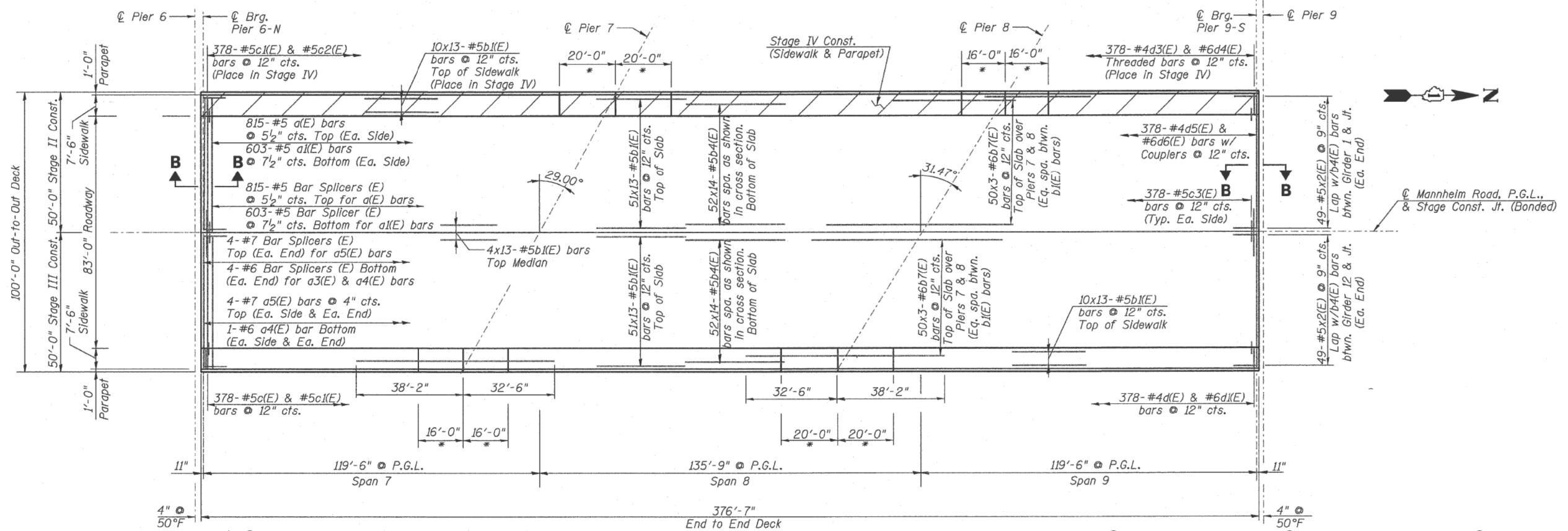
FOR INFORMATION ONLY

FILE NAME =	USER NAME = guillaumejp	DESIGNED -	REVISED -	STATE OF ILLINOIS DEPARTMENT OF TRANSPORTATION	LOCATION #3 (SN 016-2407) US 12, 20, 45 SB OVER SANTA FE DR ET AL	VAR.	SECTION	COUNTY	TOTAL SHEETS	SHEET NO.
pw\11084EBIDINTEG.illinois.gov\PWIDOT\Documents\IDOT Offices\District 1\Projects\DI05716\Design\DI05716-Design.dgn	PLOT SCALE = 100.0000' / in.	CHECKED -	REVISED -			VAR.	2015-0721	COOK	22	13
Default	PLOT DATE = 12/23/2015	DATE -	REVISED -			CONTRACT NO. 62B56			ILLINOIS FED. AID PROJECT	
						SCALE:	SHEET 2 OF 2 SHEETS	STA.	TO STA.	



* 1/4"x3/4" Formed sidewalk joint with concrete sealer (full width along joint-backer rod not required) (See Sheet S18 for cross section)

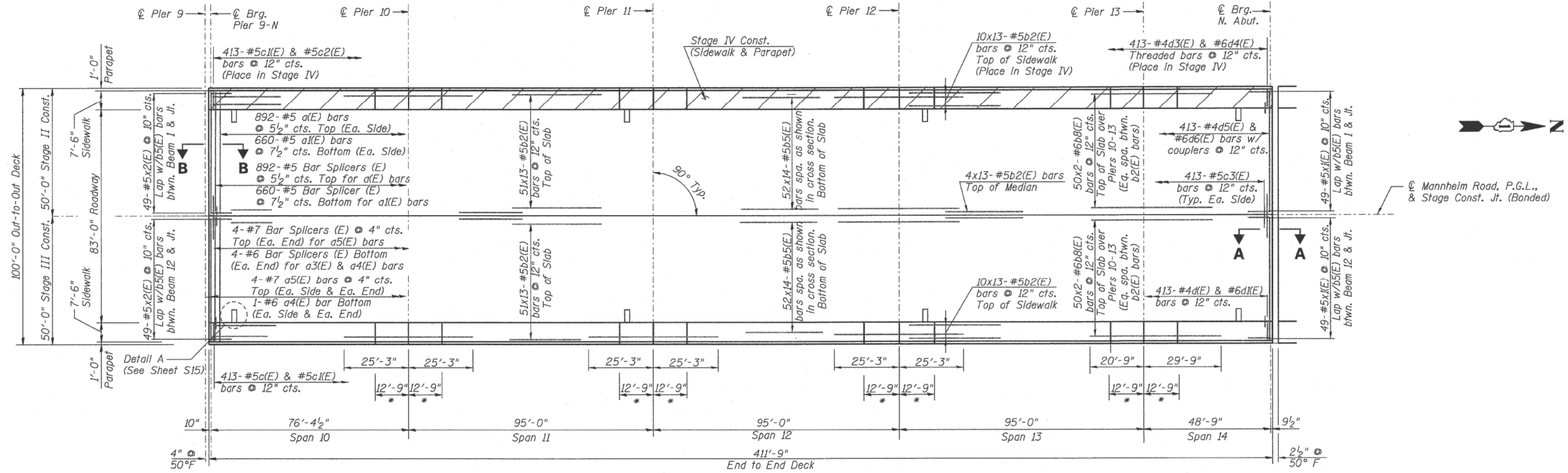
DECK PLAN (UNIT 1)
Median omitted for clarity



DECK PLAN (UNIT 2)
Median omitted for clarity

FOR INFORMATION ONLY

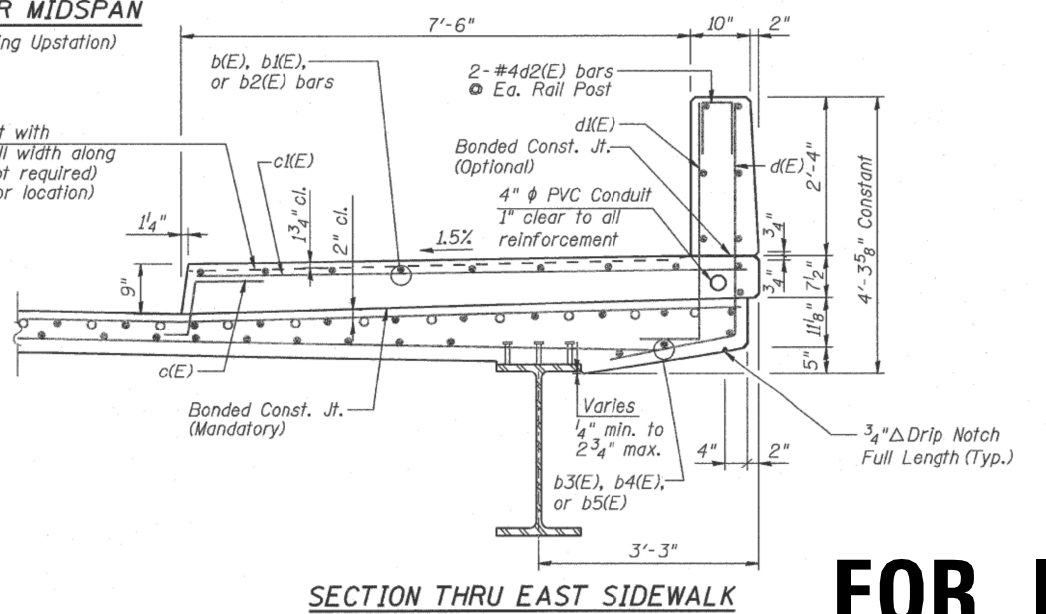
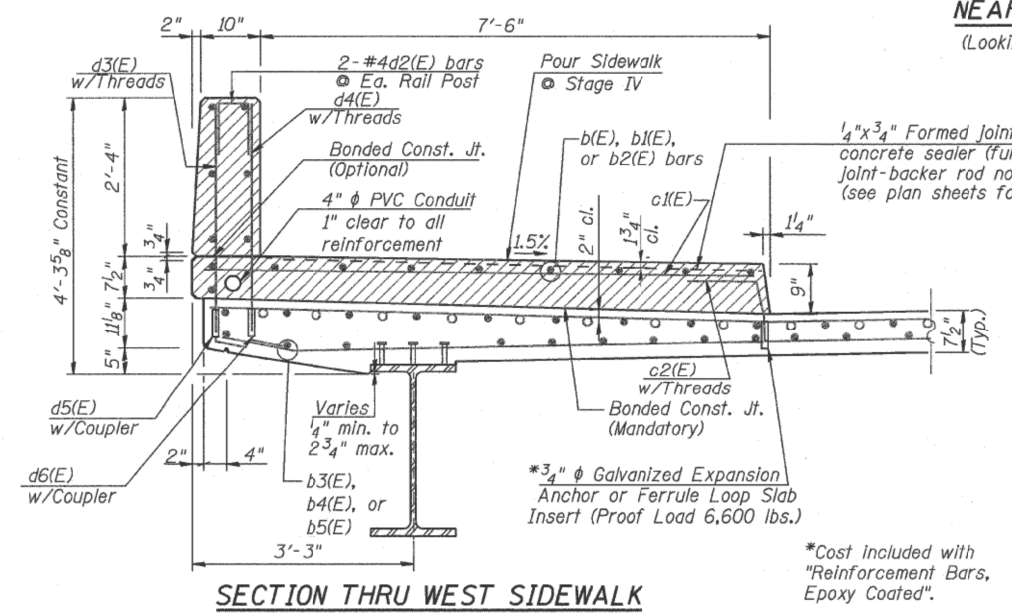
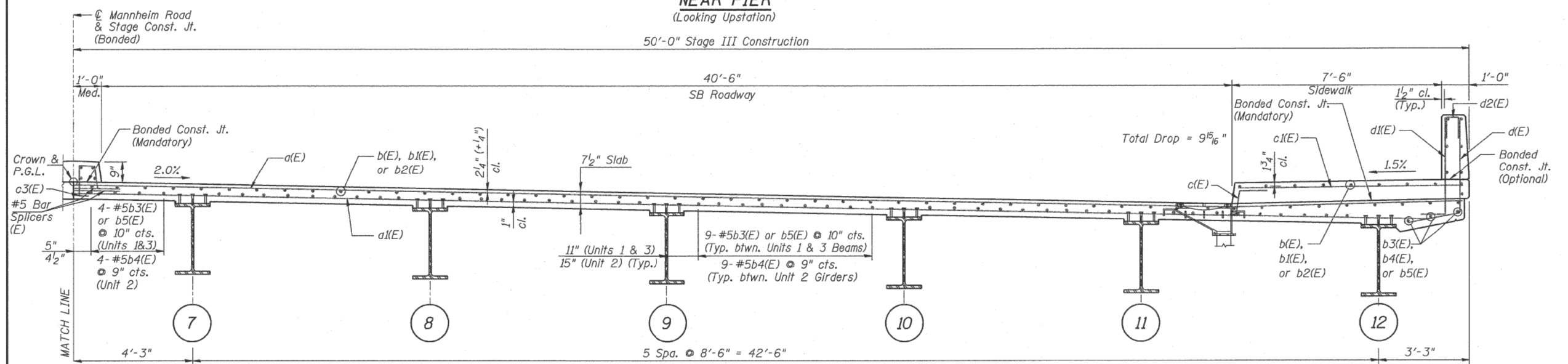
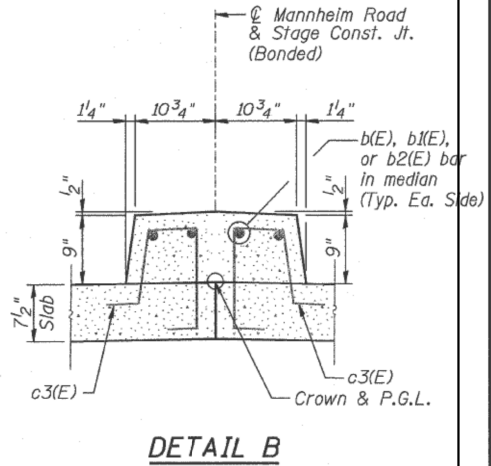
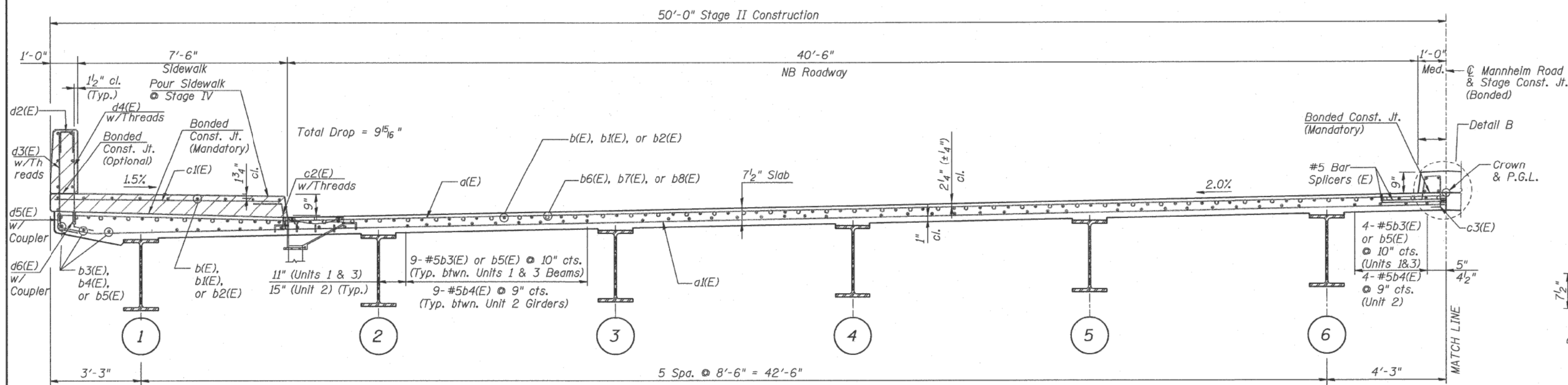
FILE NAME -	USER NAME = guillaumejp	DESIGNED -	REVISED -	STATE OF ILLINOIS DEPARTMENT OF TRANSPORTATION	LOCATION #4 (SN 016-2815) US 12.45 MANNHEIM RD OVER RR - METRA, CP, RDS	VAR.	SECTION	COUNTY	TOTAL SHEETS	SHEET NO.	
pw:\11084EBIDINTEG\Illinois.gov\PIWIDOT\Documents\DOT Offices\District 1\Projects\DI05716-Design.dgn		CHECKED -	REVISED -			VAR.	2015-0721	COOK	22	14	
Default		PLOT SCALE = 100.0000' / in.	REVISED -			CONTRACT NO. 62B56					
		PLOT DATE = 12/23/2015	REVISED -			SCALE:	SHEET 1 OF 3 SHEETS	STA.	TO STA.	ILLINOIS FED. AID PROJECT	



DECK PLAN (UNIT 3)
Median omitted for clarity

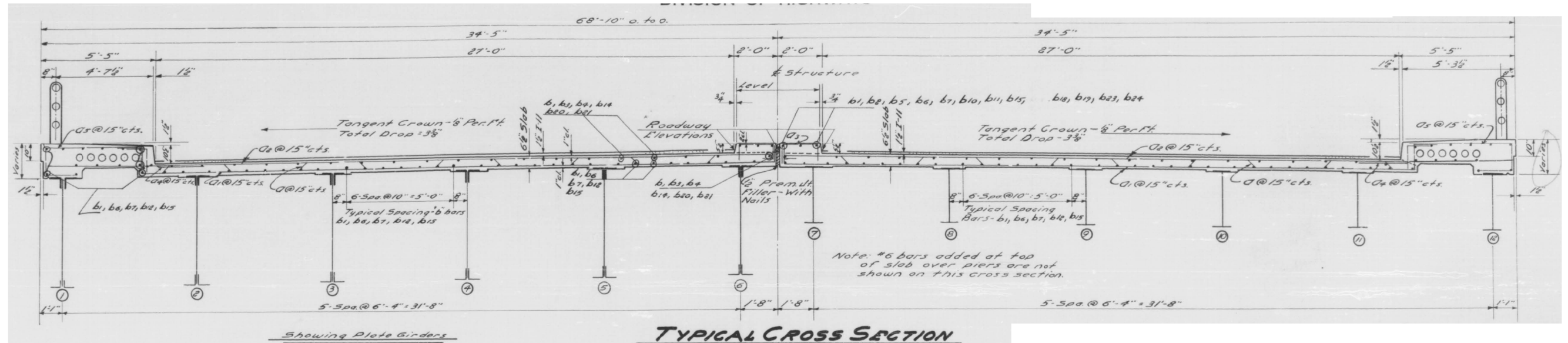
FOR INFORMATION ONLY

FILE NAME =	USER NAME = guillaumefp	DESIGNED -	REVISED -	STATE OF ILLINOIS DEPARTMENT OF TRANSPORTATION	LOCATION #4 (SN 016-2815) US 12.45 MANNHEIM RD OVER RR - METRA, CP, RDS	VAR.	SECTION	COUNTY	TOTAL SHEETS	SHEET NO.	
pw:\IL\084EBIDINTEG.illinois.gov\PWIDOT\Documents\DOT Offices\District 1\Projects\10857\Drawings\Design\1085716-Design.dgn	PLOT SCALE = 100.0000' / in.	CHECKED -	REVISED -			VAR.	2015-0721	COOK	22	15	
Default	PLOT DATE = 12/23/2015	DATE -	REVISED -			CONTRACT NO. 62B56			ILLINOIS FED. AID PROJECT		
						SCALE:	SHEET 2 OF 3 SHEETS	STA.	TO STA.		

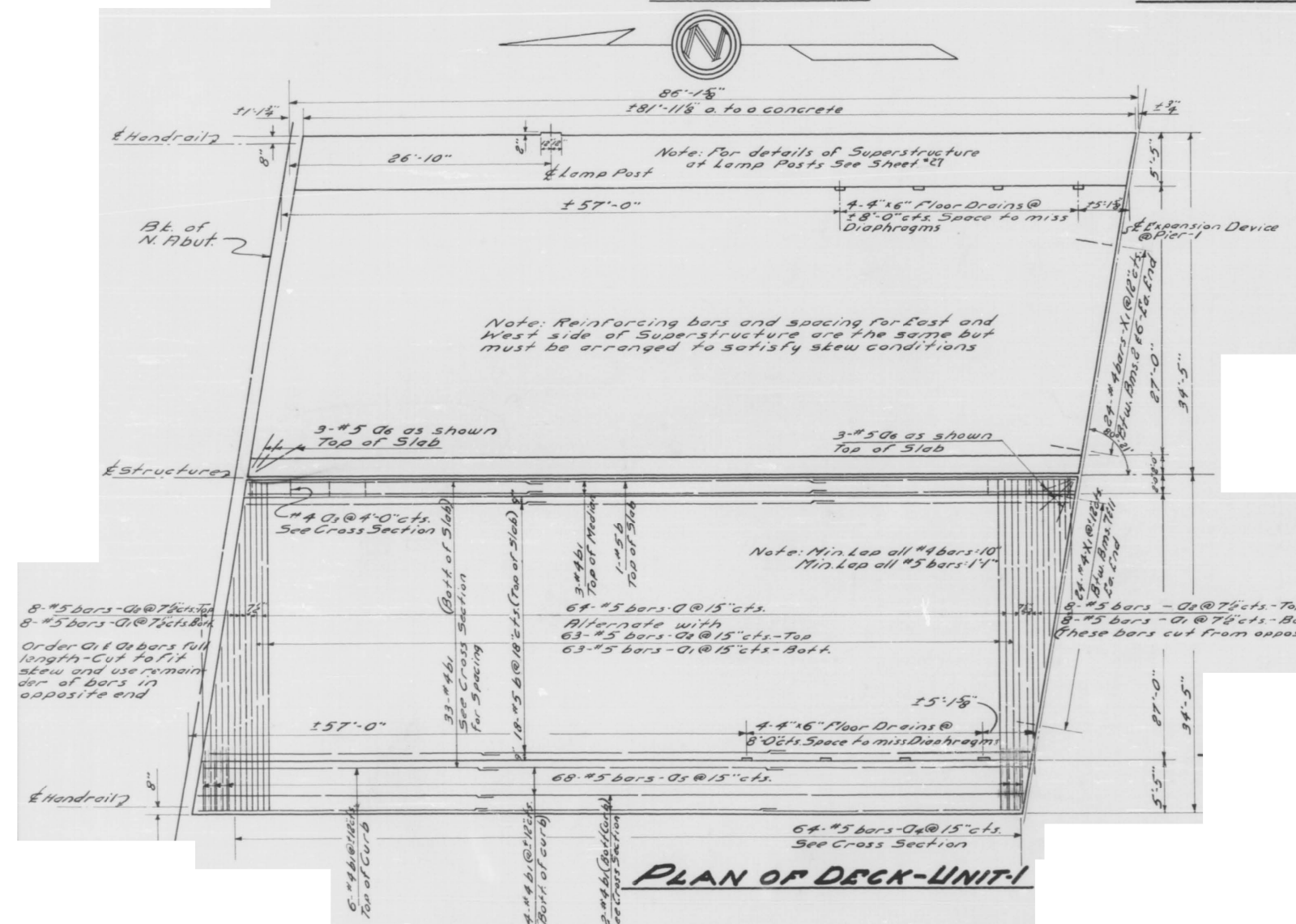


FOR INFORMATION ONLY

FILE NAME =	USER NAME = guillaumejp	DESIGNED -	REVISED -	STATE OF ILLINOIS DEPARTMENT OF TRANSPORTATION	LOCATION #4 (SN 016-2815) US 12,45 MANNHEIM RD OVER RR - METRA, CP, RDS	VAR.	SECTION	COUNTY	TOTAL SHEETS	SHEET NO.	
pw:\IL084EBIDINTEG\Illinois.gov\PIWIDOT\Documents\DOT Offices\District 1\Projects\DI05716\Design\DI05716-Design.dgn		CHECKED -	REVISED -			VAR.	2015-0721	COOK	22	16	
Default		DATE -	REVISED -			CONTRACT NO. 62B56					
						ILLINOIS FED. AID PROJECT					



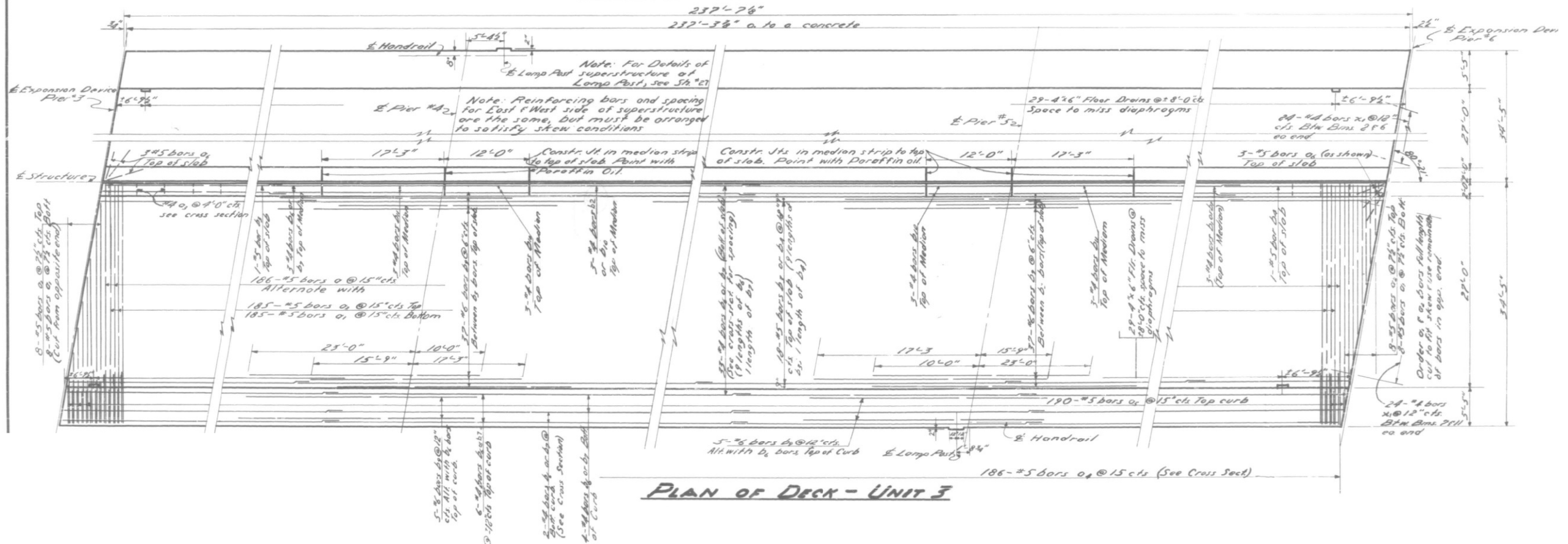
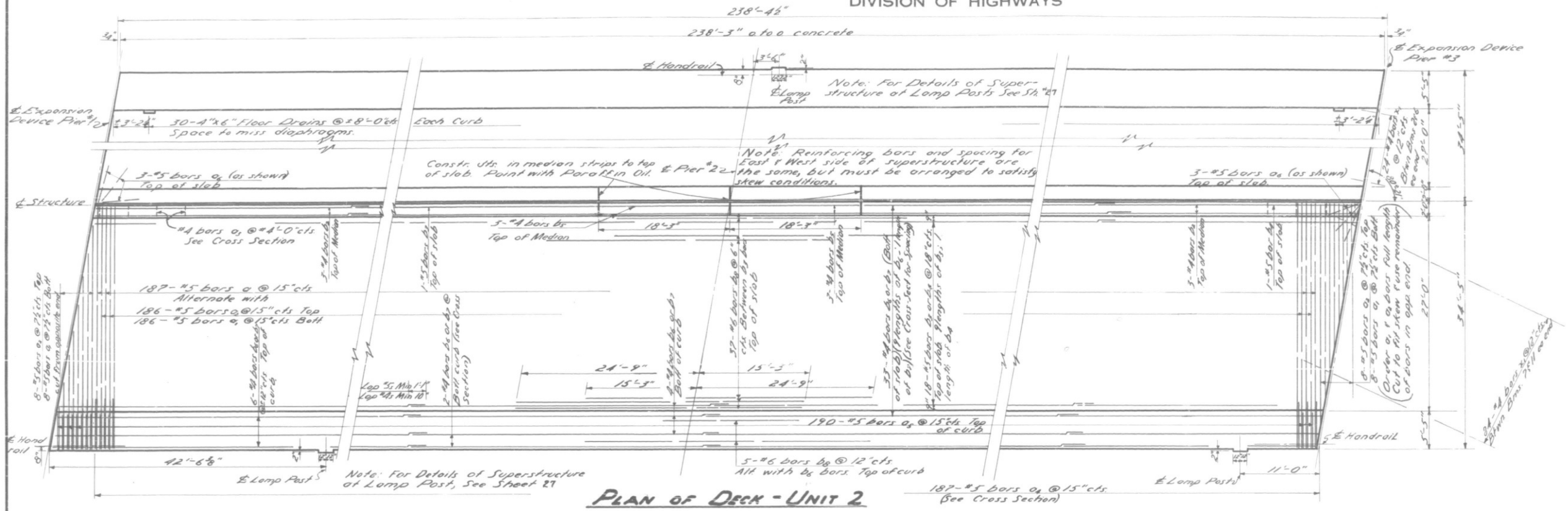
TYPICAL CROSS SECTION



PLAN OF DECK-UNIT-1

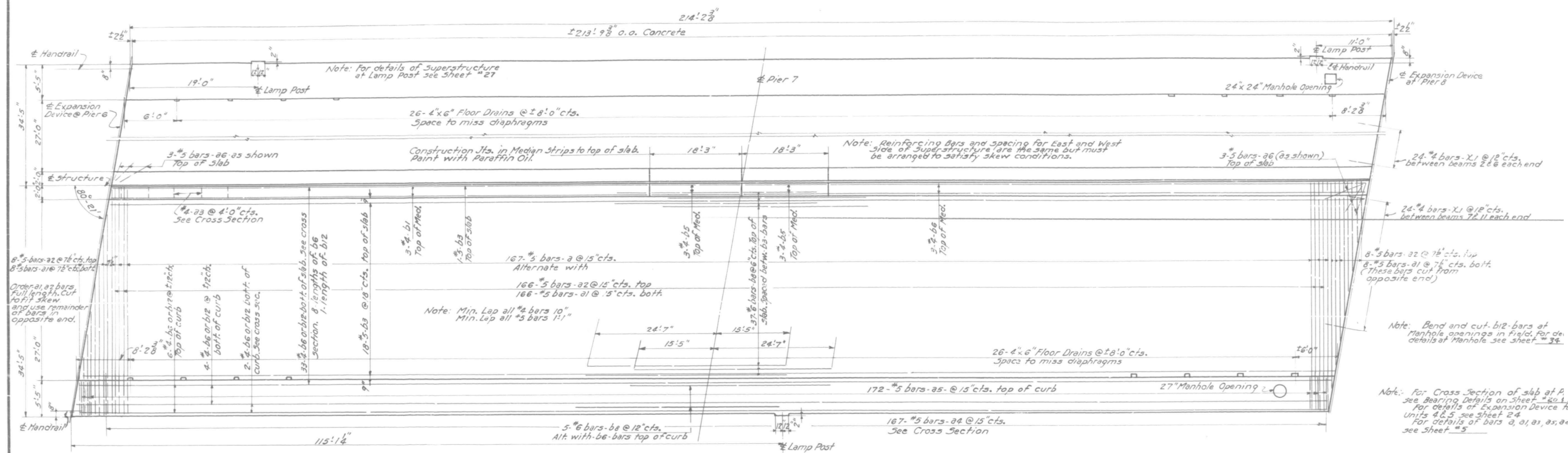
FOR INFORMATION ONLY

FILE NAME =	USER NAME = guillaumejp	DESIGNED -	REVISED -	STATE OF ILLINOIS DEPARTMENT OF TRANSPORTATION	LOCATION #5 (SN 016-0337) US 12,20,45 MANNHEIM OVER RR - UP PROVISIO YD	VAR.	SECTION	COUNTY	TOTAL SHEETS	SHEET NO.	
pw\1\084EBID\INTEG\Illinois.gov\PIWID\Documents\DOT Offices\District 1\Projects\DI0577\Browns\Design\DI05716-Design.dgn	PLOT SCALE = 100.0000' / in.	CHECKED -	REVISED -			VAR.	2015-0721	COOK	22	17	
Default	PLOT DATE = 12/23/2015	DATE -	REVISED -			CONTRACT NO. 62B56					
						SCALE:	SHEET 1 OF 4 SHEETS	STA.	TO STA.	ILLINOIS FED. AID PROJECT	

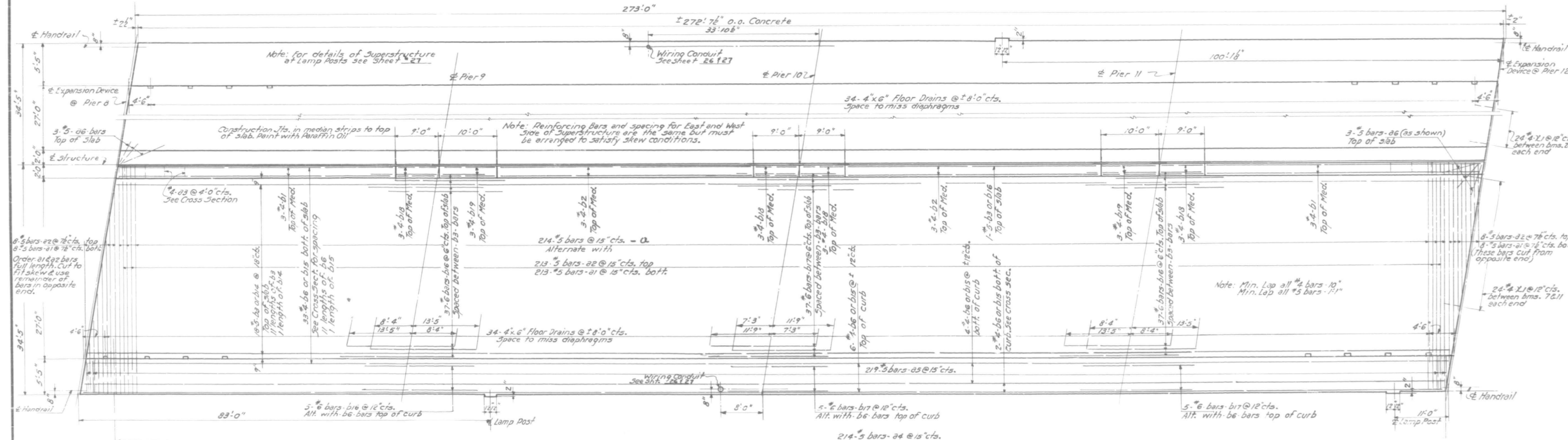


FOR INFORMATION ONLY

FILE NAME =	USER NAME = guillaumejp	DESIGNED -	REVISED -	STATE OF ILLINOIS DEPARTMENT OF TRANSPORTATION	LOCATION #5 (SN 016-0337) US 12,20,45 MANNHEIM OVER RR - UP PROVISIO YD	VAR.	SECTION	COUNTY	TOTAL SHEETS	SHEET NO.	
pw:\IL084EBIDINTEG\Illinois.gov\PIWIDOT\Documents\DOT Offices\District 1\Projects\DI087\Design\Design\DI05716-Design.dgn		CHECKED -	REVISED -			VAR.	2015-0721	COOK	22	18	
Default		PLOT DATE = 12/23/2015	REVISED -			CONTRACT NO. 62B56					
		DATE -	REVISED -			SCALE:	SHEET 2 OF 4 SHEETS	STA.	TO STA.	ILLINOIS FED. AID PROJECT	



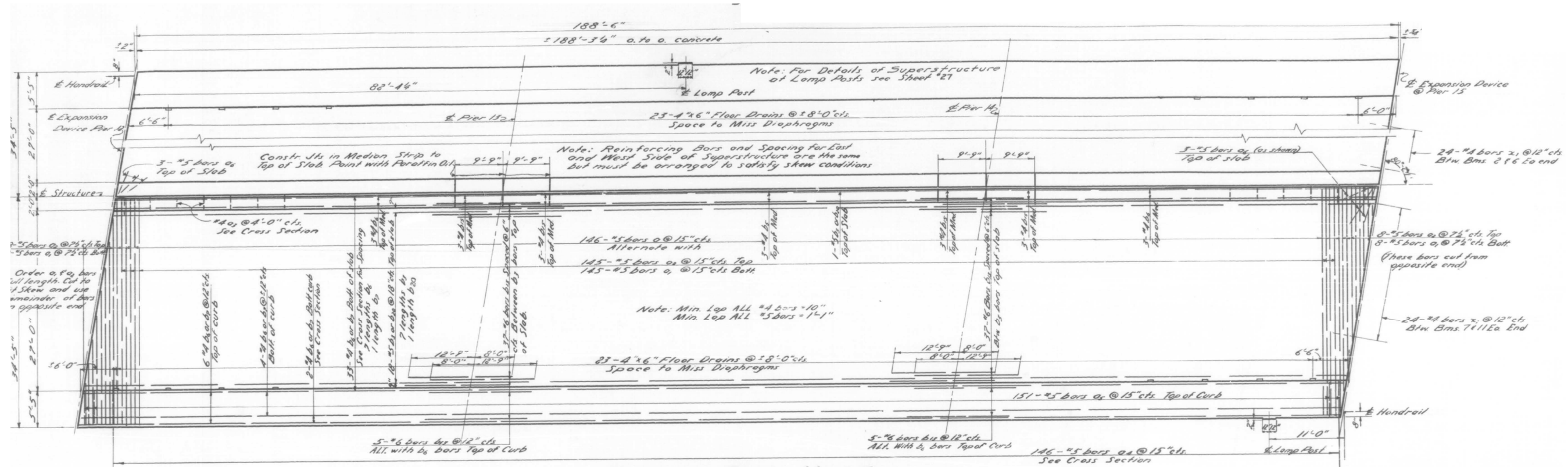
PLAN OF DECK-UNIT 4



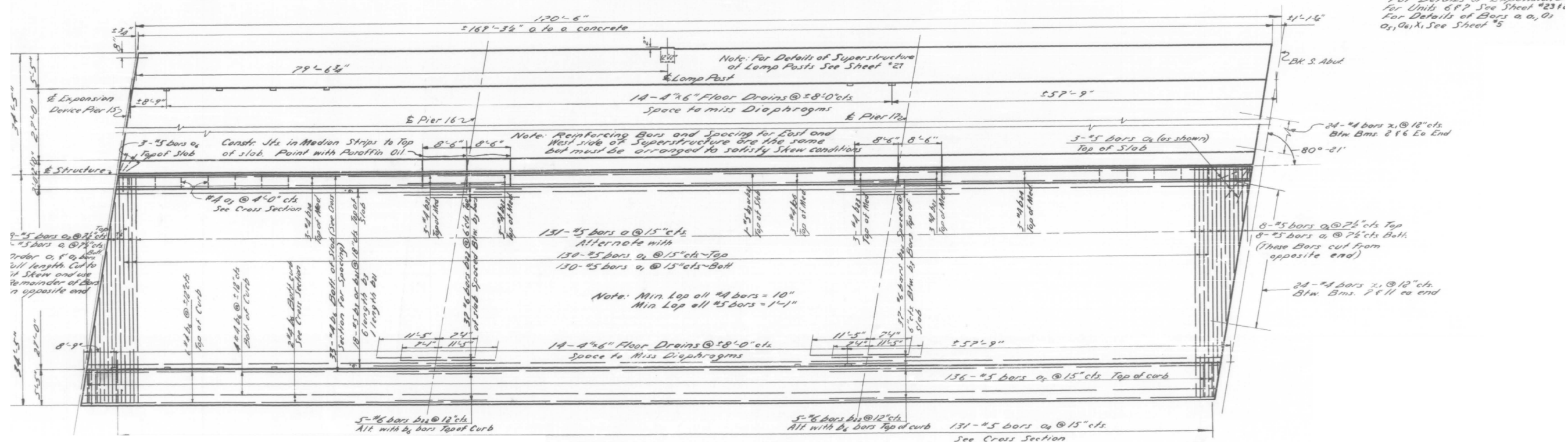
PLAN OF DECK-UNIT 5

FOR INFORMATION ONLY

FILE NAME =	USER NAME = guillaumejp	DESIGNED -	REVISED -	STATE OF ILLINOIS DEPARTMENT OF TRANSPORTATION	LOCATION #5 (SN 016-0337) US 12,20,45 MANNHEIM OVER RR - UP PROVISIO YD	VAR.	SECTION	COUNTY	TOTAL SHEETS	SHEET NO.
pw:\11084EBIDINTEG\Illinois.gov\PIWIDOT\Documents\DOT Offices\District 1\Projects\DI057\BROWns\Design\DI05716-Design.dgn	PLOT SCALE = 100.0000' / in.	CHECKED -	REVISED -			VAR.	2015-0721	COOK	22	19
Default	PLOT DATE = 12/23/2015	DATE -	REVISED -			CONTRACT NO. 62B56				
						SCALE:	SHEET 3 OF 4 SHEETS	STA.	TO STA.	ILLINOIS FED. AID PROJECT



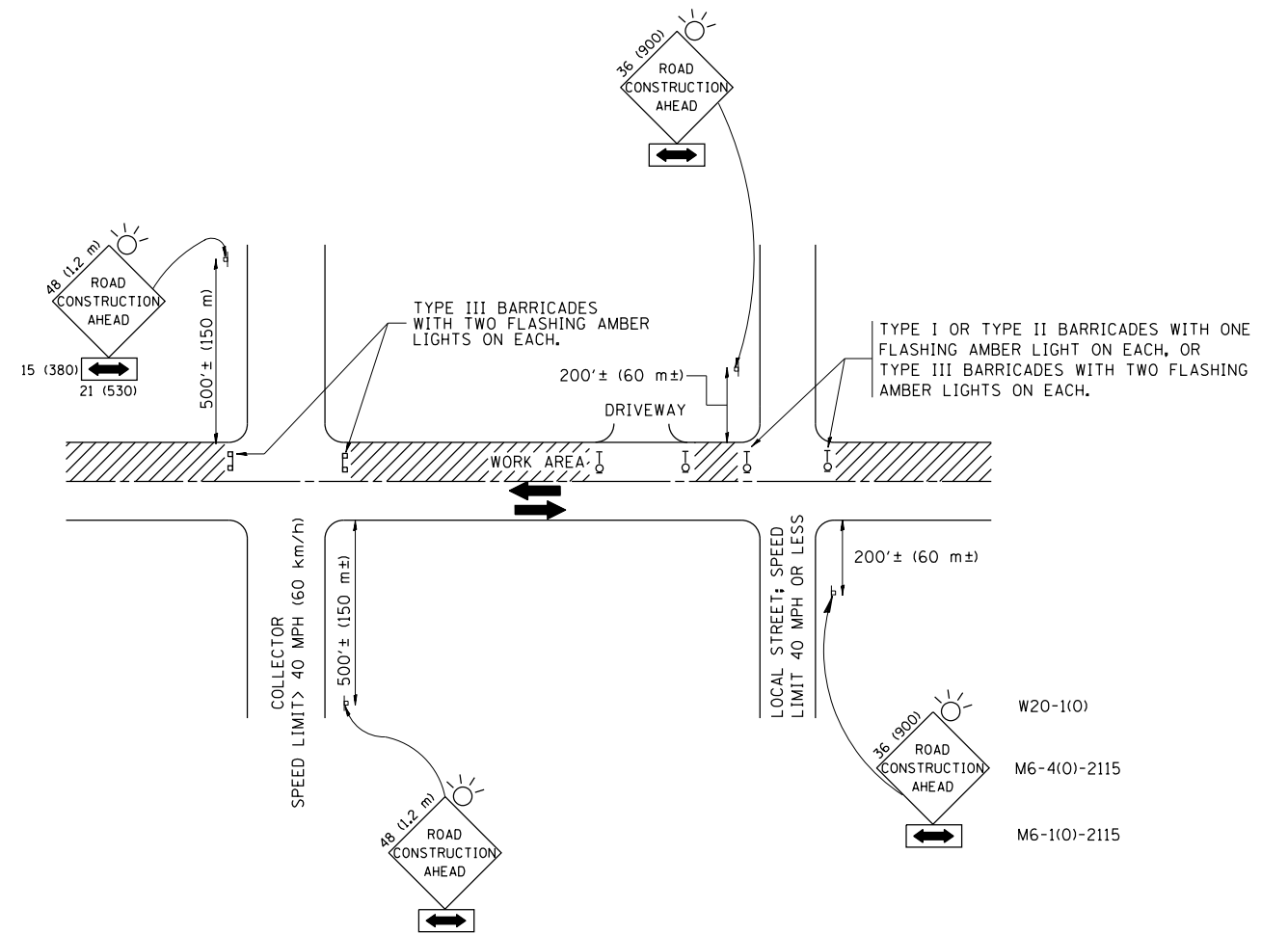
PLAN OF DECK UNIT 6



PLAN OF DECK UNIT 7

FOR INFORMATION ONLY

FILE NAME =	USER NAME = guillaumejp	DESIGNED -	REVISED -	STATE OF ILLINOIS DEPARTMENT OF TRANSPORTATION	LOCATION #5 (SN 016-0337) US 12,20,45 MANNHEIM OVER RR - UP PROVISIO YD	VAR.	SECTION	COUNTY	TOTAL SHEETS	SHEET NO.	
pw:\1\084EBIDINTEG.illinois.gov\PIWIDOT\Documents\DOT Offices\District 1\Projects\DI0577\Design\Design\DI05716-Design.dgn		CHECKED -	REVISED -			VAR.	2015-0721	COOK	22	20	
PLOT SCALE = 100.0000' / in.		DATE -	REVISED -			CONTRACT NO. 62B56					
Default						SCALE:	SHEET 4 OF 4 SHEETS	STA.	TO STA.	ILLINOIS FED. AID PROJECT	



TRAFFIC CONTROL AND PROTECTION FOR SIDE ROADS, INTERSECTIONS, AND DRIVEWAYS

NOTES:

A. FOR NO LANE RESTRICTION ON THE SIDE ROAD OR DRIVEWAYS

1. SIDE ROAD WITH A SPEED LIMIT OF 40 MPH (60 km/h) OR LESS AS SHOWN ON THE DRAWING AND AS DIRECTED BY THE ENGINEER:

a) ONE ROAD CONSTRUCTION AHEAD SIGN 36 x 36 (900x900) WITH A FLASHER AND FLAG MOUNTED ON IT APPROXIMATELY 200' (60 m) IN ADVANCE OF THE MAIN ROUTE.

b) THE CLOSED PORTION OF THE MAIN ROUTE SHALL BE PROTECTED BY BLOCKING WITH TYPE I, TYPE II OR TYPE III BARRICADES, 1/3 OF THE CROSS SECTION OF THE CLOSED PORTION.

2. SIDE ROAD WITH A SPEED LIMIT GREATER THAN 40 MPH (60 km/h) AS SHOWN ON THE DRAWING AND AS DIRECTED BY THE ENGINEER:

a) ONE ROAD CONSTRUCTION AHEAD SIGN 48 x 48 (1.2 m x 1.2 m) WITH A FLASHER MOUNTED ON IT APPROXIMATELY 500' (150 m) IN ADVANCE OF THE MAIN ROUTE.

b) THE CLOSED PORTION OF THE MAIN ROUTE SHALL BE PROTECTED BY BLOCKING WITH TYPE III BARRICADES, 1/2 OF THE CROSS SECTION OF THE CLOSED PORTION.

3. WHEN THE SIDE ROAD LIES BETWEEN THE BEGINNING OF THE MAINLINE SIGNING AND THE WORK ZONE, A SINGLE HEADED ARROW (M6-1) SHALL BE USED IN LIEU OF THE DOUBLE HEADED ARROW (M6-4).

B. FOR A LANE CLOSURE ON A SIDE ROAD OR DRIVEWAY:

USE APPLICABLE PORTIONS OF THE TYPICAL APPLICATION OF TRAFFIC CONTROL DEVICES (STD. 701501, STD. 701606 OR THE APPROPRIATE STANDARD). THE SPACING OF SIGNS AND BARRICADES SHALL BE ADJUSTED FOR FIELD CONDITIONS AS DIRECTED BY THE ENGINEER. THE DIRECTIONAL ARROW SHALL BE COVERED OR REMOVED WHEN NO LONGER CONSISTENT WITH THE SIDE ROAD LANE CLOSURE.

C. ADVANCE WARNING SIGNS ARE TO BE OMITTED ON DRIVEWAY UNLESS OTHERWISE NOTED.

D. THE TRAFFIC CONTROL AND PROTECTION FOR SIDE ROADS, INTERSECTIONS, AND DRIVEWAYS SHALL BE INCIDENTAL TO THE COST OF SPECIFIED TRAFFIC CONTROL STANDARDS OR ITEMS.

All dimensions are in millimeters (inches) unless otherwise shown.

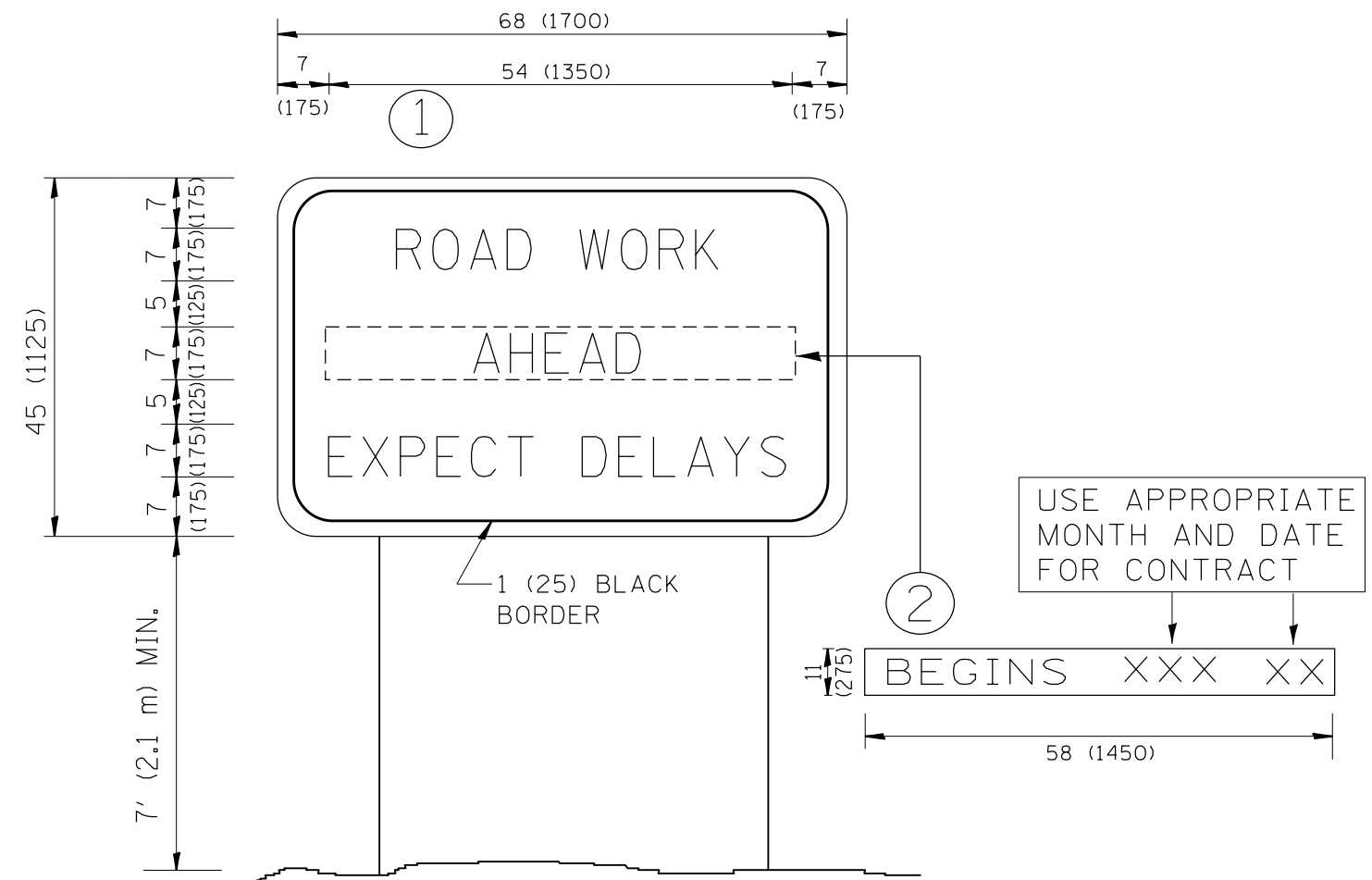
FILE NAME =	USER NAME = guillaumejp	DESIGNED - LHA	REVISED - J. OBERLE 10-18-95
p:\work\084EBID\INTEG\illinois.gov\PIWIDOT\Documents\IDOT Offices\District 1\Projects\DI05716\Design\DI05716-Design.dgn			REVISED - A. HOUSEH 03-06-96
	PLOT SCALE = 100.0000' / in.	CHECKED -	REVISED - A. HOUSEH 10-15-96
	PLOT DATE = 12/23/2015	DATE - 06-89	REVISED - T. RAMMACHER 01-06-00

STATE OF ILLINOIS
DEPARTMENT OF TRANSPORTATION

TRAFFIC CONTROL AND PROTECTION FOR
SIDE ROADS, INTERSECTIONS, AND DRIVEWAYS

SCALE: NONE SHEET NO. 1 OF 1 SHEETS STA. TO STA.

VAR.	SECTION	COUNTY	TOTAL SHEETS	SHEET NO.
VAR.	2015-0721	COOK	22	21
TC-10		CONTRACT NO. 62B56		
FED. ROAD DIST. NO. 1 ILLINOIS FED. AID PROJECT				



NOTES:

1. USE BLACK LETTERING ON ORANGE BACKGROUND.
2. ERECT SIGNS IN ADVANCE OF THE LOCATION FOR THE "ROAD CONSTRUCTION AHEAD" SIGN AT LOCATIONS AS DIRECTED BY THE ENGINEER.
3. ERECT SIGN ① WITH INSTALLED PANEL ② ONE WEEK PRIOR TO THE START OF CONSTRUCTION.
4. REMOVE PANEL ② SOON AFTER THE START OF CONSTRUCTION.
5. SEE SPECIAL PROVISION FOR "TEMPORARY INFORMATION SIGNING" FOR ADDITIONAL INFORMATION.
6. ONE SIGN ASSEMBLY EQUALS 25.70 SQ. FT. (2.3 SQ. M.)
7. SHALL BE PAID FOR AS TEMPORARY INFORMATION SIGNING.

ALL DIMENSIONS ARE IN INCHES (MILLIMETERS) UNLESS OTHERWISE SHOWN.

FILE NAME =	USER NAME = guillaumejp	DESIGNED -	REVISED - R. MIRS 09-15-97
p:\11\084EBIDINTEG\illinois.gov\PWIDOT\Documents\DOT Offices\District 1\Projects\DI05716\Design\DI05716-Design.dgn		DRAWN -	REVISED - R. MIRS 12-11-97
	PLOT SCALE = 100.0000' / in.	CHECKED -	REVISED - T. RAMMACHER 02-02-99
	PLOT DATE = 12/23/2015	DATE -	REVISED - C. JUCIUS 01-31-07

**STATE OF ILLINOIS
DEPARTMENT OF TRANSPORTATION**

**ARTERIAL ROAD
INFORMATION SIGN**

SCALE: NONE SHEET NO. 1 OF 1 SHEETS STA. TO STA.

VAR.	SECTION	COUNTY	TOTAL SHEETS	SHEET NO.
VAR.	2015-072I	COOK	22	22
TC-22		CONTRACT NO. 62B56		
FED. ROAD DIST. NO. 1 ILLINOIS FED. AID PROJECT				