

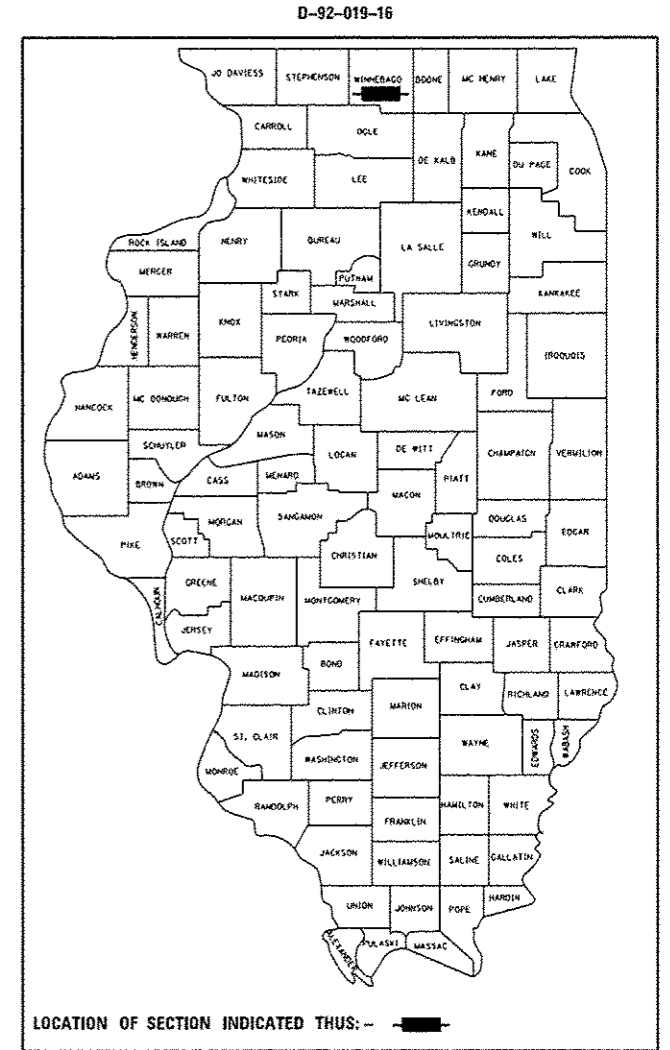
STATE OF ILLINOIS  
DEPARTMENT OF TRANSPORTATION  
DIVISION OF HIGHWAYS

**PROPOSED  
HIGHWAY PLANS**

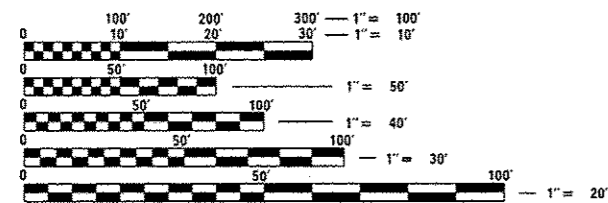
FAI 39 ROUTE (I-39)  
SECTION D2 DECK REPAIR 2016-2  
TYPE of IMPROVEMENT: DECK REPAIR  
WINNEBAGO

F.A.I. RTE.	SECTION	COUNTY	TOTAL SHEETS	SHEET NO.
39	D2 DECK REPAIR 2016-2	WINNEBAGO	26	1
		ILLINOIS	CONTRACT NO. 64L06	

FOR INDEX OF SHEETS, SEE SHEET NO. 2  
FOR STATE STANDARDS, SEE SHEET NO. 2

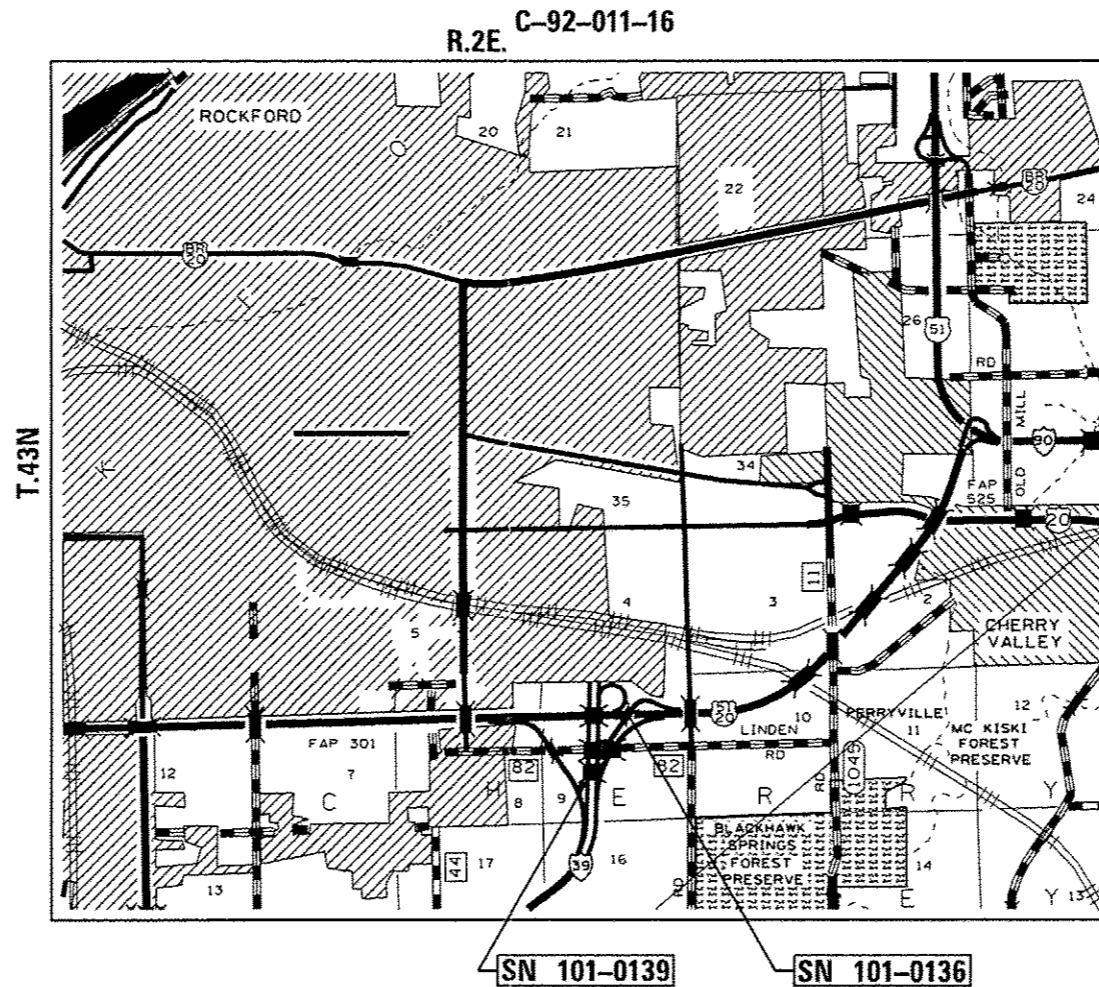


CHERRY VALLEY TOWNSHIP, SECTION 9



FULL SIZE PLANS HAVE BEEN PREPARED USING STANDARD ENGINEERING SCALES. REDUCED SIZED PLANS WILL NOT CONFORM TO STANDARD SCALES. IN MAKING MEASUREMENTS ON REDUCED PLANS, THE ABOVE SCALES MAY BE USED.

J.U.L.I.E.  
JOINT UTILITY LOCATION INFORMATION FOR EXCAVATION  
1-800-892-0123  
OR 811



STATE OF ILLINOIS  
DEPARTMENT OF TRANSPORTATION  
DIVISION OF HIGHWAYS

SUBMITTED *Dec. 11<sup>th</sup> 2015*  
*Paul C. [Signature]*  
DEPUTY DIRECTOR OF HIGHWAYS, REGION ENGINEER

*Jan 29 2016*  
*Mahmoud M. Atef, P.E.*  
ENGINEER OF DESIGN AND ENVIRONMENT

*Jan 29 2016*  
*Cher Osmann, P.E.*  
DIRECTOR OF HIGHWAYS, CHIEF ENGINEER

PRINTED BY THE AUTHORITY  
OF THE STATE OF ILLINOIS

PROJECT ENGINEER: DAVID DOSS (815) 284-5416  
PROJECT MANAGER: MAHMOUD ETEMADI (815) 284-5393  
CONTRACT NO. 64L06

# INDEX OF SHEETS

- 1 COVER SHEET
- 2 INDEX OF SHEETS, STATE STANDARDS
- 3 GENERAL NOTES
- 4-5 SUMMARY OF QUANTITIES
- 6 DETOUR MAP SN 101-0136 & SN 101-0139
- 7-9 RAMP CLOSURE DETAIL SN 101-0136 & SN 101-0139
- 10 SIGN DETAILS
- 11-16 REPAIR PLANS FOR SN 101-0136
- 17-20 REPAIR PLANS FOR SN 101-0139
- 21-23 EXISTING PLANS FOR SN 101-0136
- 24-26 EXISTING PLANS FOR SN 101-0139

# STATE STANDARDS

- 701006-05 OFF-RD OPERATIONS, 2L, 2W, 15' (4.5m) TO 24" (600mm) FROM PAVEMENT EDGE
- 701011-04 OFF-RD MOVING OPERATIONS, 2L, 2W, DAY ONLY
- 701201-04 LANE CLOSURE, 2L, 2W, DAY ONLY, FOR SPEEDS > 45 MPH
- 701301-04 LANE CLOSURE, 2L, 2W, SHORT TIME OPERATIONS
- 701400-08 APPROACH TO LANE CLOSURE, FREEWAY/EXPRESSWAY
- 701401-09 LANE CLOSURE FREEWAY/EXPRESSWAY
- 701428 TRAFFIC CONTROL SETUP AND REMOVAL FREEWAY/EXPRESSWAY
- 701451-03 RAMP CLOSURE FREEWAY/EXPRESSWAY
- 701901-04 TRAFFIC CONTROL DEVICES
- 720011-01 METAL POSTS FOR SIGNS, MARKERS AND DELINEATORS
- 728001-01 TELESCOPING STEEL SIGN SUPPORT
- 729001-01 APPLICATIONS OF TYPES A & B METAL POSTS (FOR SIGNS & MARKERS)

FILE NAME :	USER NAME :	DESIGNED :	REVISED :	STATE OF ILLINOIS DEPARTMENT OF TRANSPORTATION	INDEX OF SHEETS & STATE STANDARDS	F.A.I. RTE.	SECTION	COUNTY	TOTAL SHEETS	SHEET NO.
D:\BR\Oass\Winnebago\64L06 Repairs SN	101-0136 and 101-0139\CAD\64L06-idx-cover.dwg	DRAWN :	REVISED :			39	02 BRIDGE REPAIR 2016-2	WINNEBAGO	2 L	2
Default	PLOT SCALE : 100.0000 1/1 in.	CHECKED :	REVISED :			CONTRACT NO. 64L06				
	PLOT DATE : Dec-10-2015 07:38:48 AM	DATE :	REVISED :			ILLINOIS FED. AID PROJECT				
						SCALE:	SHEET	OF	SHEETS	STA. TO STA.

# GENERAL NOTES

All Borrow/Waste/Use sites must be approved by the Department prior to removing any material from the project or initiating any earthmoving activities, including temporary stockpiling outside the limits of construction.

The Contractor shall be responsible for protecting utility property during construction operations as outlined in Article 107.31 of the Standard Specifications. A minimum of 48 hours advance notice is required for non-emergency work. The JULIE number is 800-892-0123. The following listed utilities located within the project limits or immediately adjacent to the project construction limits are members of JULIE:

**ELECTRIC:**

COMMONWEALTH EDISON COMPANY  
ATTN: NORA FERNANDEZ (815) 490-2869  
123 ENERGY AVENUE  
ROCKFORD, IL 61109

**TELEPHONE:**

AT&T COMMUNICATIONS, INC.  
ATTN: CARL DONAHUE (630) 552-4677  
866 ROCK CREEK ROAD  
PLANO, IL 60545

**FRONTIER**

ATTN: DONALD BELMORE (815) 544-6171  
2239 NEWBURG ROAD  
BELVIDERE, IL 61008

**WINDSTREAM**

ATTN: DEVEN BARNHILL (815) 592-3395  
1901 NORTH ROSELLE ROAD  
SCHAUMBURG, IL 60195

**PETROLEUM:**

BUCKEYE PARTNERS, LP  
ATTN: MICHAEL NORRIS (219) 313-5321  
12920 SOUTH BELL ROAD  
LEMONT, IL 61109

**WATER:**

ROCKFORD WATER DEPARTMENT  
ATTN: JAMIE ROTT (815) 967-7060  
425 EAST STATE STREET  
ROCKFORD, IL 61104

**GAS:**

NICOR GAS CO.  
ATTN: BRUCE KOPPANG (630) 388-3046  
1844 FERRY ROAD  
NAPERVILLE, IL 60563

NATURAL GAS PIPE LINE  
ATTN: VINCE HANNAH (309) 944-4676  
16648 IL HIGHWAY 82  
GENESEO, IL 61254

**COMMUNICATIONS:**

G4S TECHNOLOGY, LLC  
ATTN: CECIL KUHSE (630) 343-2155  
565 WILLOWBROOK CENTER PARKWAY  
WILLOWBROOK, IL 60527

**SEWER:**

ROCK RIVER WATER RECLAMATION DISTRICT  
ATTN: DANA CARROLL (815) 387-7400  
3501 KISHWAUKEE STREET  
ROCKFORD, IL 61126

**CATV:**

COMCAST CABLE  
ATTN: MICHAEL OWENS (224) 229-3037  
4450 KISHWAUKEE STREET  
ROCKFORD, IL 61109

THE FOLLOWING MIXTURE REQUIREMENTS ARE APPLICABLE FOR THIS PROJECT:

LOCATION AND MIXTURE USES(S):	PROTECTIVE LAYER
PG:	SBS 70-22
DESIGN AIR VOIDS	4.0 @ N50
MIXTURE COMPOSITION (GRADATION MIXTURE)	IL 4.75
FRICTION AGGREGATE	N/A
20 YEAR ESAL	
MIX UNIT WEIGHT	109 lbs/sy/in
QUALITY MANAGEMENT PROGRAM TO BE USED	QC/OA
SUBLOT TONNAGE	N/A

LOCATION AND MIXTURE USES(S):	SURFACE
PG:	SBS PG 70-22
DESIGN AIR VOIDS	4.0 @ N90
MIXTURE COMPOSITION (GRADATION MIXTURE)	IL 9.5
FRICTION AGGREGATE	D
20 YEAR ESAL	44.7
MIX UNIT WEIGHT	112 lbs/sy/in
QUALITY MANAGEMENT PROGRAM TO BE USED	QC/OA
SUBLOT TONNAGE	N/A

IDOT is not a member of JULIE. If you are near any overhead lighting, intersection lighting or traffic signals, contact the IDOT Traffic Office at 815/284-5469 at least 48 hours prior to work.

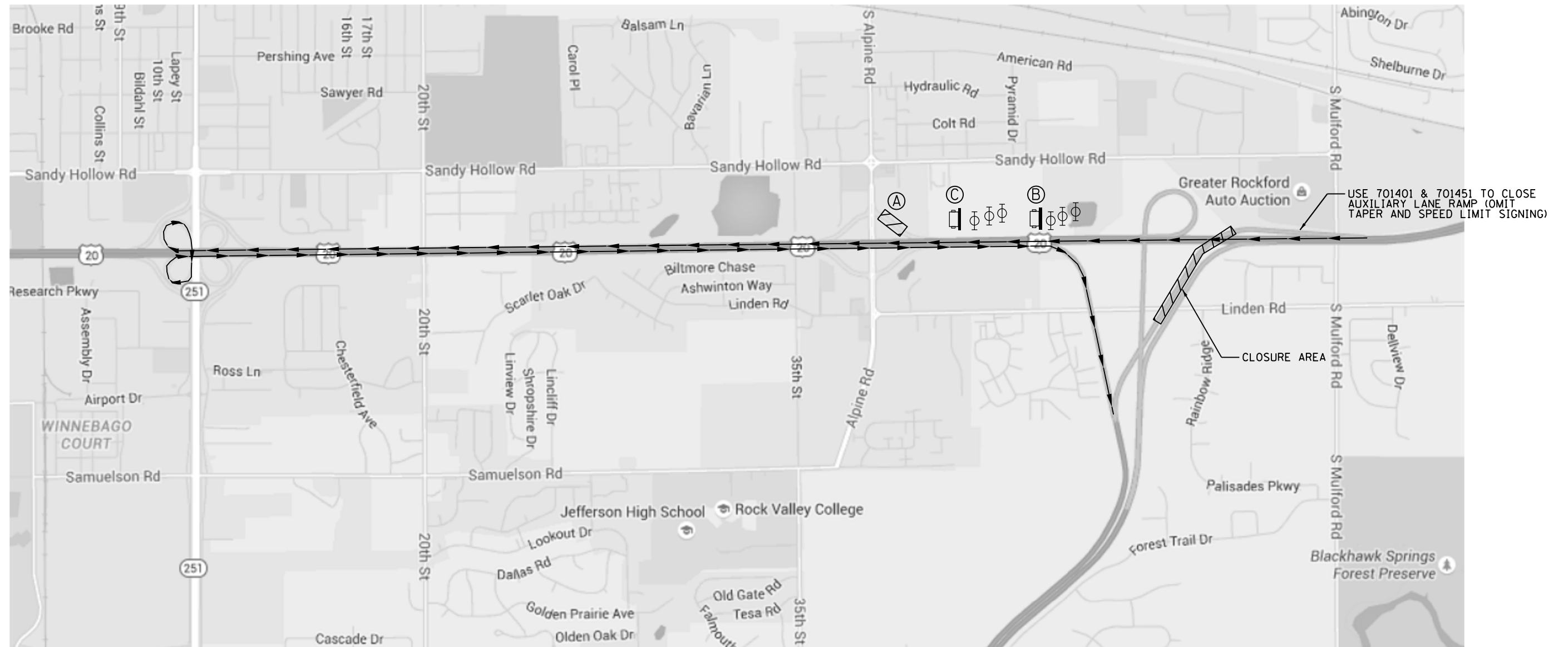
FILE NAME =	USER NAME = joradd	DESIGNED -	REVISED -	<b>STATE OF ILLINOIS DEPARTMENT OF TRANSPORTATION</b>	<b>GENERAL NOTES</b>	F.A.I. RTE.	SECTION	COUNTY	TOTAL SHEETS	SHEET NO.
D:\BR\Draws\Winnebago\64L06 Repairs SH	101-0136 and 101-0139\CADD\64L06-shr-cover.dgn	DRAWN -	REVISED -			39	D2 BRIDGE REPAIR 2016-2	WINNEBAGO	26	3
Default	PLOT DATE = Dec-10-2015 07:38:54 AM	CHECKED -	REVISED -			CONTRACT NO. 64L06		ILLINOIS FED. AID PROJECT		

# SUMMARY OF QUANTITIES

CODE NUMBER	ITEM	UNIT	URBAN 100% STATE TOTAL QUANTITY	0014 100% STATE WINNEBAGO COUNTY
40603545	POLYMERIZED HOT-MIX ASPHALT SURFACE COURSE, MIX "D", N90	TON	127	127
50102400	CONCRETE REMOVAL	CU YD	22.2	22.2
50157300	PROTECTIVE SHIELD	SQ YD	355	355
50300255	CONCRETE SUPERSTRUCTURE	CU YD	22.2	22.2
50800205	REINFORCEMENT BARS, EPOXY COATED	POUND	2890	2890
52000110	PREFORMED JOINT STRIP SEAL	FOOT	103	103
67100100	MOBILIZATION	L SUM	1	1
70100450	TRAFFIC CONTROL AND PROTECTION, STANDARD 701201	L SUM	1	1
70100800	TRAFFIC CONTROL AND PROTECTION, STANDARD 701401	L SUM	1	1
70100820	TRAFFIC CONTROL AND PROTECTION, STANDARD 701451	L SUM	1	1
70106800	CHANGEABLE MESSAGE SIGN	CAL MO	3	3
70300220	TEMPORARY PAVEMENT MARKING - LINE 4"	FOOT	3,100	3,100
70301000	WORK ZONE PAVEMENT MARKING REMOVAL	SQ FT	1,033	1,033
<del>X0326767</del>	<del>PROFILE DIAMOND GRINDING CONCRETE PAVEMENT</del>	<del>SQ YD</del>	<del>557</del>	<del>557</del>
X5810100	WATERPROOFING MEMBRANE SYSTEM (SPECIAL)	SQ YD	1791	1791
X7010410	SPEED DISPLAY TRAILER	CAL MO	3	3



# DETOUR MAP SN 101-0136 & SN 101-0139



**(A)** CONTRACTOR TO CLOSE ALPINE ROAD  
EXIT RAMP USING 701451



TO BE USED ON ALL ALPINE ROAD & I-39 NORTH  
GROUND MOUNT/OVERHEAD SIGNING.

CONTACT THE CITY OF ROCKFORD, JEREMY CARTER,  
A MINIMUM OF 72 HOURS IN ADVANCE FOR SIGNAL  
TIMINGS ON ALPINE ROAD.

**(B)** CHANGEABLE MESSAGE BOARD

I-39 / USE  
DETOUR / IL 251  
TRAFFIC / 2 MILES

**(C)** CHANGEABLE MESSAGE BOARD

I-39 / USE  
DETOUR / IL 251  
TRAFFIC / 2 MILES

### SYMBOLS

- Detour Route
- ☐ Portable changeable message sign
- ⊥ Sign
- ⊕ Type II barricade, drum, or vertical  
barricade with monodirectional flashing light

FILE NAME =	USER NAME = dossed	DESIGNED - _____	REVISED - _____
D:\NBR\Draws\Winnebago\64L06 Repairs SN	01-0136 and 101-0139\CADD\64L06-shr-cover.dgn	DRAWN - _____	REVISED - _____
Default	PLOT SCALE = 100.0000' / in.	CHECKED - _____	REVISED - _____
	PLOT DATE = Dec-10-2015 07:39:18 AM	DATE - _____	REVISED - _____

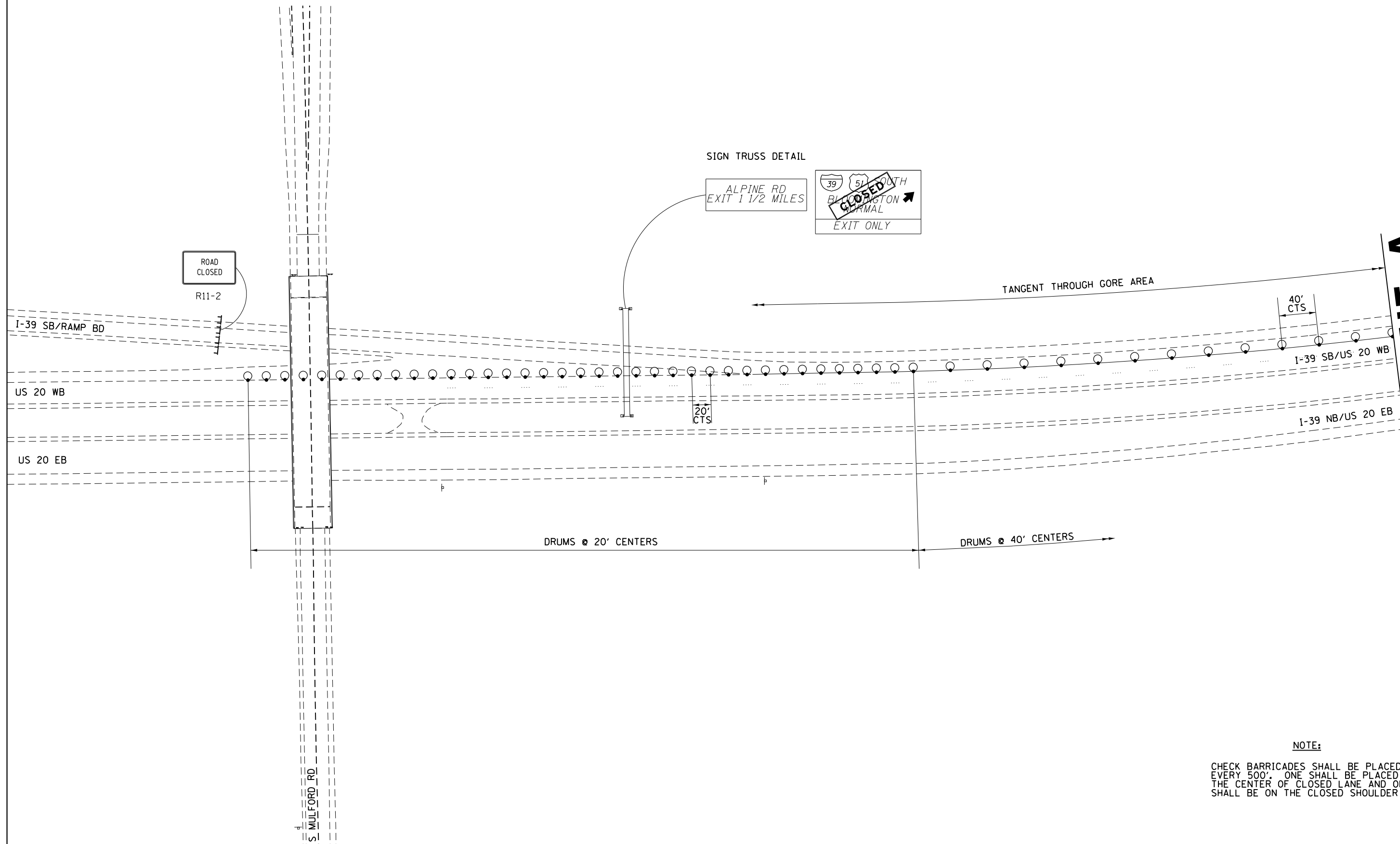
STATE OF ILLINOIS  
DEPARTMENT OF TRANSPORTATION

DETOUR MAP  
SN 101-0136 & SN 101-0139

SCALE: \_\_\_\_\_ SHEET \_\_\_\_\_ OF \_\_\_\_\_ SHEETS STA. \_\_\_\_\_ TO STA. \_\_\_\_\_

F.A.I. RTÉ.	SECTION	COUNTY	TOTAL SHEETS	SHEET NO.
39	D2 BRIDGE REPAIR 2016-2	WINNEBAGO	27	6
CONTRACT NO. 64L06			ILLINOIS FED. AID PROJECT	

# RAMP CLOSURE DETAIL SN 101-0136 & SN 101-0139

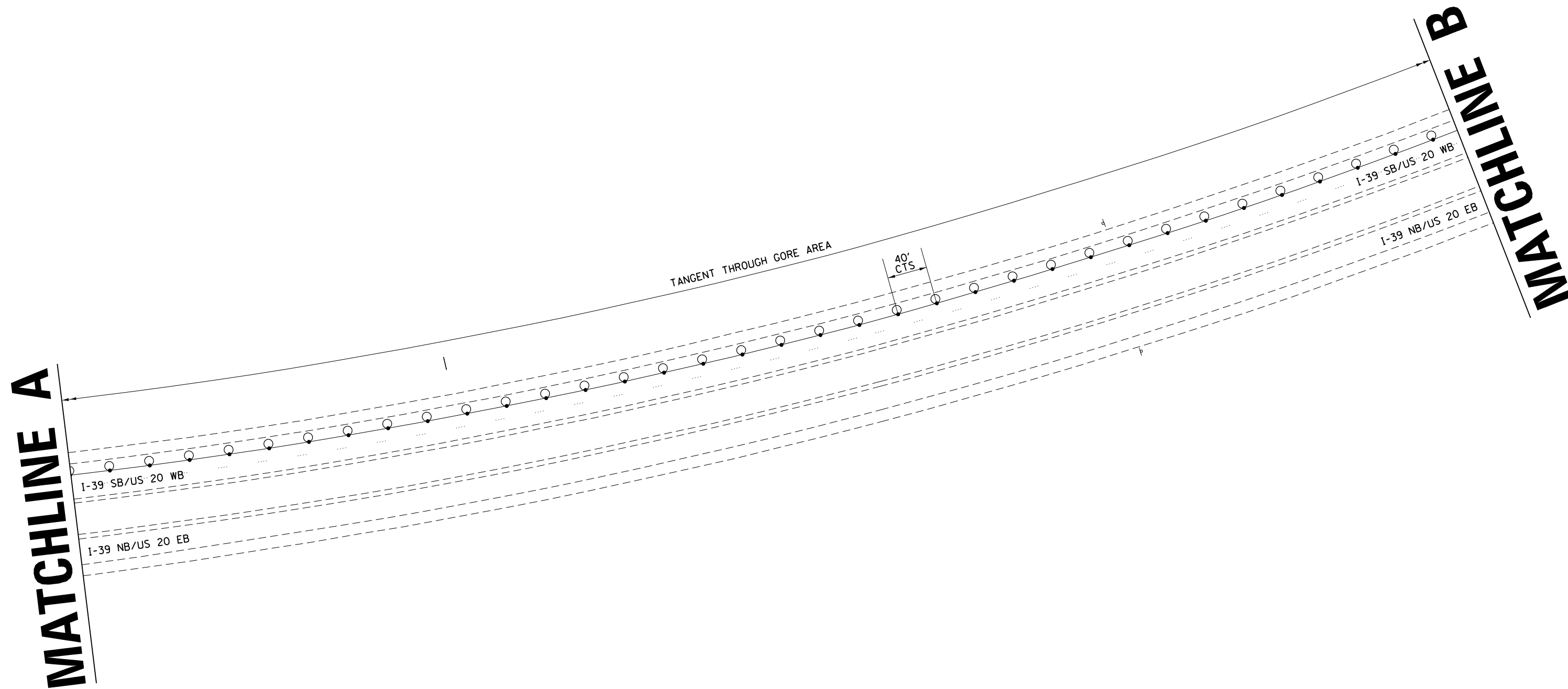


**NOTE:**

CHECK BARRICADES SHALL BE PLACED EVERY 500'. ONE SHALL BE PLACED IN THE CENTER OF CLOSED LANE AND ONE SHALL BE ON THE CLOSED SHOULDER

FILE NAME =	USER NAME = dossdd	DESIGNED -	REVISED -	<b>STATE OF ILLINOIS DEPARTMENT OF TRANSPORTATION</b>	<b>RAMP CLOSURE DETAIL SN 101-0136 &amp; SN 101-0139</b>		F.A.I. RTE.	SECTION	COUNTY	TOTAL SHEETS	SHEET NO.
Default	01-0136 and 101-0139\CADD\64L06-shr-cover.dgn	DRAWN -	REVISED -		39	D2 BRIDGE REPAIR 2016-2	WINNEBAGO	27	7		
	PLOT SCALE = 100.0000' / 1in.	CHECKED -	REVISED -		SCALE: _____ SHEET _____ OF _____ SHEETS STA. _____ TO STA. _____			CONTRACT NO. 64L06			
	PLOT DATE = Dec-10-2015 07:39:47 AM	DATE -	REVISED -		ILLINOIS FED. AID PROJECT						

# RAMP CLOSURE DETAIL SN 101-0136 & SN 101-0139



**NOTE:**

CHECK BARRICADES SHALL BE PLACED EVERY 500'. ONE SHALL BE PLACED IN THE CENTER OF CLOSED LANE AND ONE SHALL BE ON THE CLOSED SHOULDER

FILE NAME =	USER NAME = dossdd	DESIGNED - _____	REVISED - _____
D:\BR\Draws\Winnebago\64L06 Repairs SN	01-0136 and 101-0139\CADD\64L06-sht-cover.dgn	DRAWN - _____	REVISED - _____
Default	PLOT SCALE = 100.0000' / 1in.	CHECKED - _____	REVISED - _____
	PLOT DATE = Dec-10-2015 07:39:55 AM	DATE - _____	REVISED - _____

**STATE OF ILLINOIS  
DEPARTMENT OF TRANSPORTATION**

**RAMP CLOSURE DETAIL  
SN 101-0136 & SN 101-0139**

SCALE: \_\_\_\_\_ SHEET \_\_\_\_\_ OF \_\_\_\_\_ SHEETS STA. \_\_\_\_\_ TO STA. \_\_\_\_\_

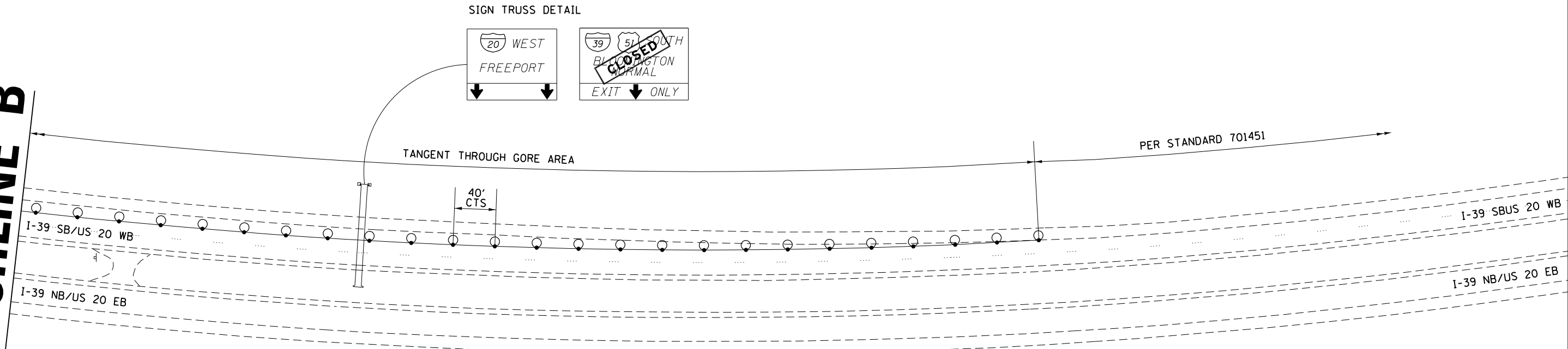
F.A.I. RTE.	SECTION	COUNTY	TOTAL SHEETS	SHEET NO.
39	D2 BRIDGE REPAIR 2016-2	WINNEBAGO	27	8
ILLINOIS FED. AID PROJECT			CONTRACT NO. 64L06	



# RAMP CLOSURE DETAIL SN 101-0136 & SN 101-0139



**MATCHLINE B**



**NOTE:**

CHECK BARRICADES SHALL BE PLACED EVERY 500'. ONE SHALL BE PLACED IN THE CENTER OF CLOSED LANE AND ONE SHALL BE ON THE CLOSED SHOULDER

FILE NAME =	USER NAME = dossed	DESIGNED - _____	REVISED - _____
D:\NBR\Draws\Winnebago\64L06 Repairs SN	01-0136 and 101-0139\CADD\64L06-sht-cover.dgn	DRAWN - _____	REVISED - _____
Default	PLOT SCALE = 100.0000' / 1in.	CHECKED - _____	REVISED - _____
	PLOT DATE = Dec-10-2015 07:40:01 AM	DATE - _____	REVISED - _____

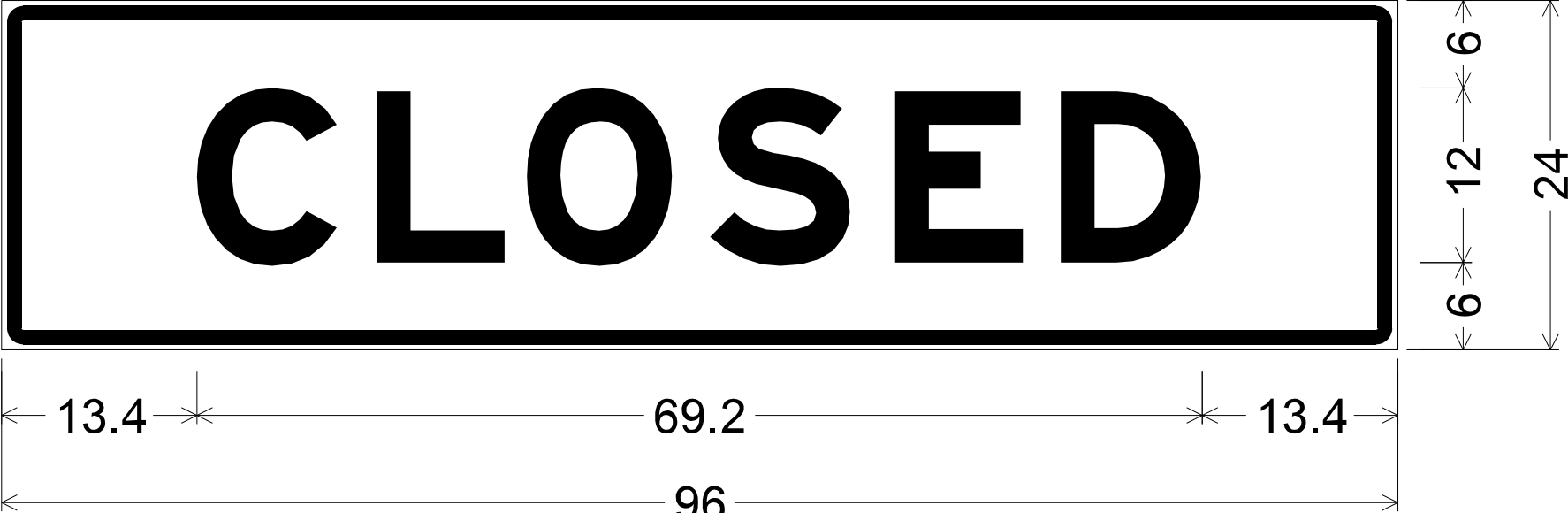
**STATE OF ILLINOIS  
DEPARTMENT OF TRANSPORTATION**

**RAMP CLOSURE DETAIL  
SN 101-0136 & SN 101-0139**

SCALE: \_\_\_\_\_ SHEET \_\_\_\_\_ OF \_\_\_\_\_ SHEETS STA. \_\_\_\_\_ TO STA. \_\_\_\_\_

F.A.I. RTE.	SECTION	COUNTY	TOTAL SHEETS	SHEET NO.
39	D2 BRIDGE REPAIR 2016-2	WINNEBAGO	27	9
CONTRACT NO. 64L06			ILLINOIS FED. AID PROJECT	

# SIGN DETAILS



1.5" Radius, 1.0" Border, 0.4" Indent, Black on Orange;  
 [CLOSED] E Mod 2K;  
 Table of letter and object lefts.

<b>C</b>	<b>L</b>	<b>O</b>	<b>S</b>	<b>E</b>	<b>D</b>
13.4	25.8	36.1	48.7	61.4	72.8

**GENERAL NOTES**

Plan dimensions and details relative to existing plans are subject to nominal construction variations. The Contractor shall field verify existing dimensions and details affecting new construction and make necessary approved adjustments prior to construction or ordering of materials. Such variations shall not be cause for additional compensation for a change in scope of the work, however, the Contractor will be paid for the quantity actually furnished at the unit price bid for the work.

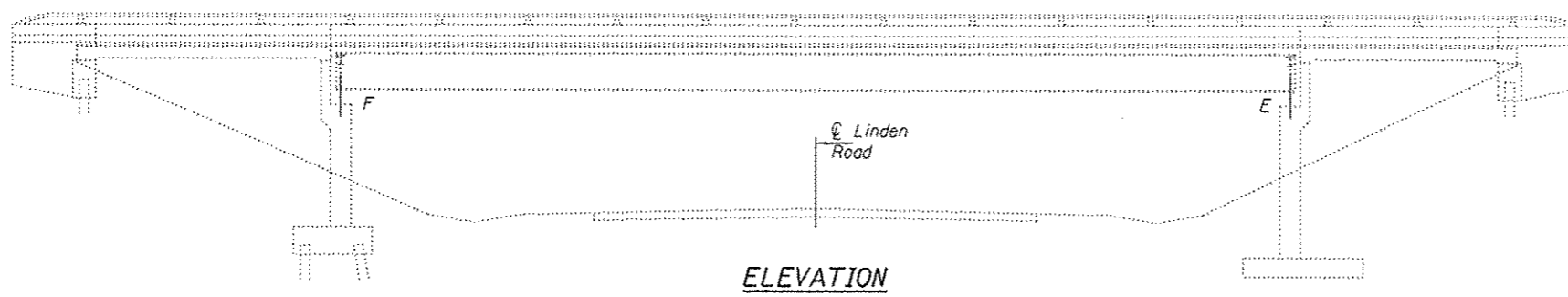
Reinforcement bars designated (E) shall be epoxy coated.

Prior to pouring the new concrete deck, all heavy or loose rust, loose mill scale, and other loose or potentially detrimental foreign material shall be removed from the surfaces in contact with concrete. Tightly adhered paint may remain unless otherwise noted. Removal shall be accomplished by methods that will not damage the steel and the cost will be included in the pay item covering removal of the existing concrete.

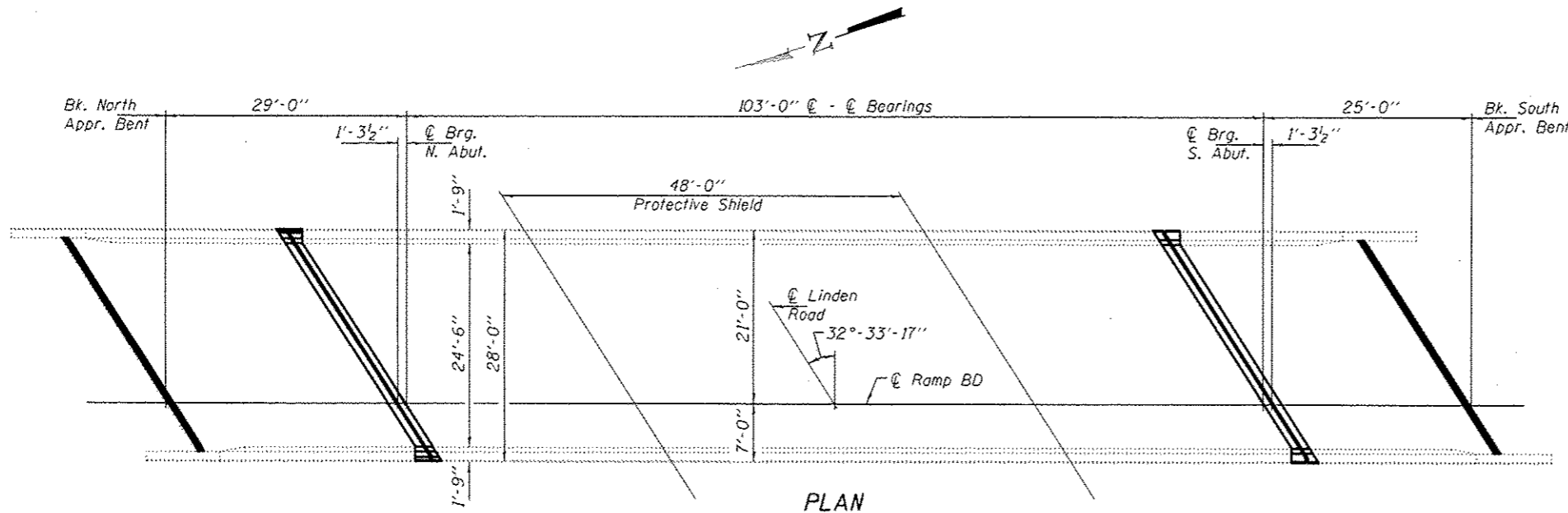
Existing reinforcement bars extending into the removal area shall be cleaned, straightened and incorporated into the new construction. Any reinforcement bars that are damaged during concrete removal shall be replaced with an approved bar splicer or anchorage system. Cost included with Concrete Removal.

The new deck surface area shall have its final finish tined according to Article 420.09(e)(1) of the Standard Specifications. Cost included with Concrete Superstructure.

Joint openings shall be adjusted according to Article 520.04 of the Standard Specifications when the deck is poured at an ambient temperature other than 50° F. Work to be completed under road closure.



**ELEVATION**



**PLAN**

**TOTAL BILL OF MATERIAL**

ITEM	UNIT	QUANTITY
Concrete Removal	Cu. Yd.	4.3
Concrete Superstructure	Cu. Yd.	4.3
Reinforcement Bars, Epoxy Coated	Pound	400
Preformed Joint Strip Seal	Foot	62
Polymerized Hot-Mix Asphalt Surface Course, Mix "D", N90	Tons	36
* Deck Slab Repair (Partial)	Sq. Yd.	64
* Deck Slab Repair (Full Depth, Type I)	Sq. Yd.	21
* Deck Slab Repair (Full Depth, Type II)	Sq. Yd.	21
HMA Surface Removal (Deck)	Sq. Yd.	711
Waterproofing Membrane System, Special	Sq. Yd.	711
Silicone Joint Sealer	Foot	61
Polymer Concrete	Cu. Ft.	5.7
Protective Shield	Sq. Yd.	120

\* Quantities are estimated. Actual locations and sizes to be determined in the field, by the Engineer.



EXPIRES 11-30-2016

DESIGNED **Victor H. Urcia**  
 CHECKED **Stephen M. Ryan**  
 DRAWN **boliva**  
 CHECKED **SMR VHV**

PASSED **David Carl Fuze**  
 ACTING ENGINEER OF BRIDGES AND STRUCTURES

DATE **JANUARY 26, 2016**  
 REVISED  
 REVISED

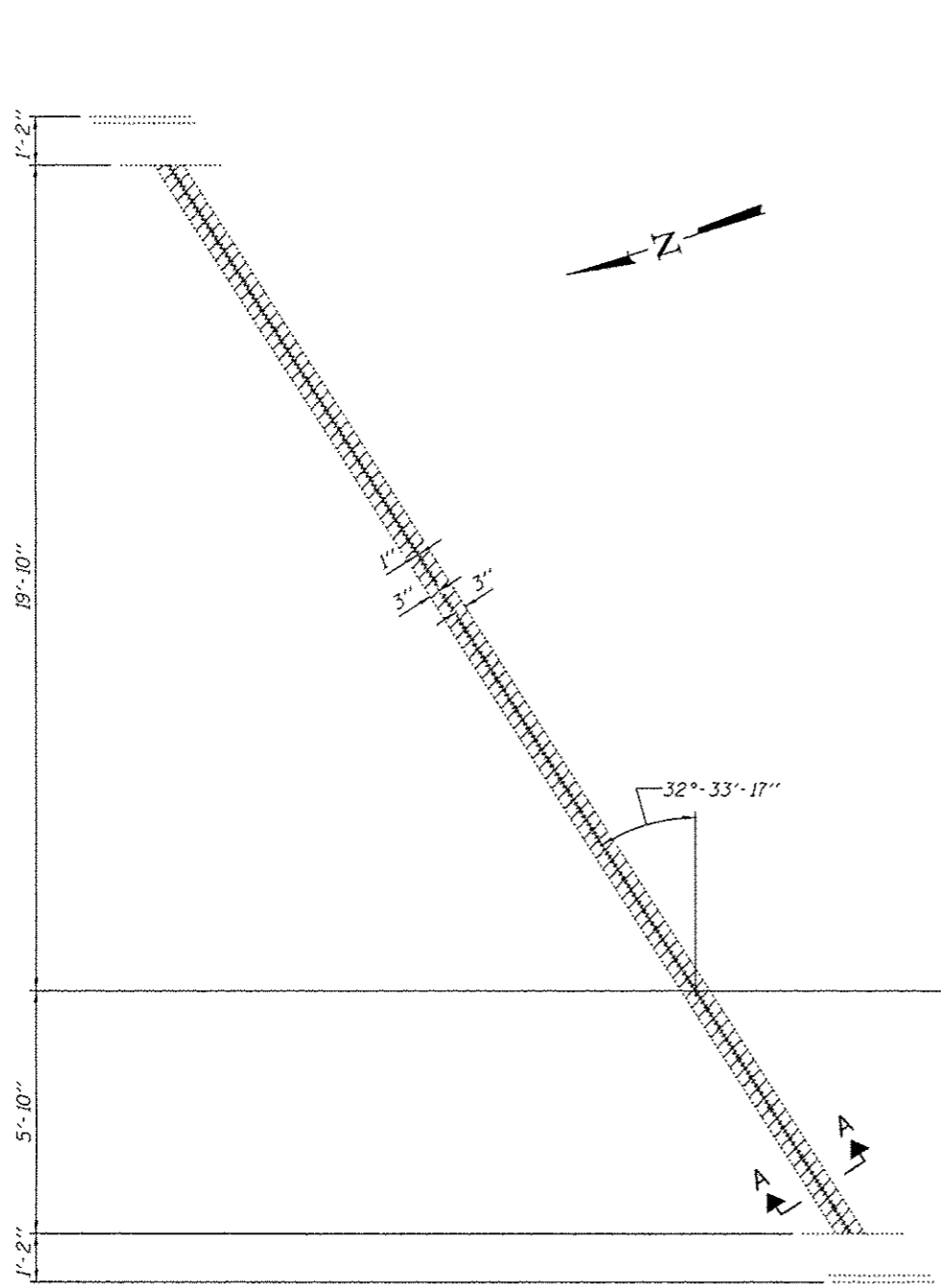
STATE OF ILLINOIS  
 DEPARTMENT OF TRANSPORTATION

PLAN AND ELEVATION  
 FAI 39 (RAMP BD) OVER LINDEN ROAD  
 SN 101-0139

SHEET NO. 1 OF 4 SHEETS

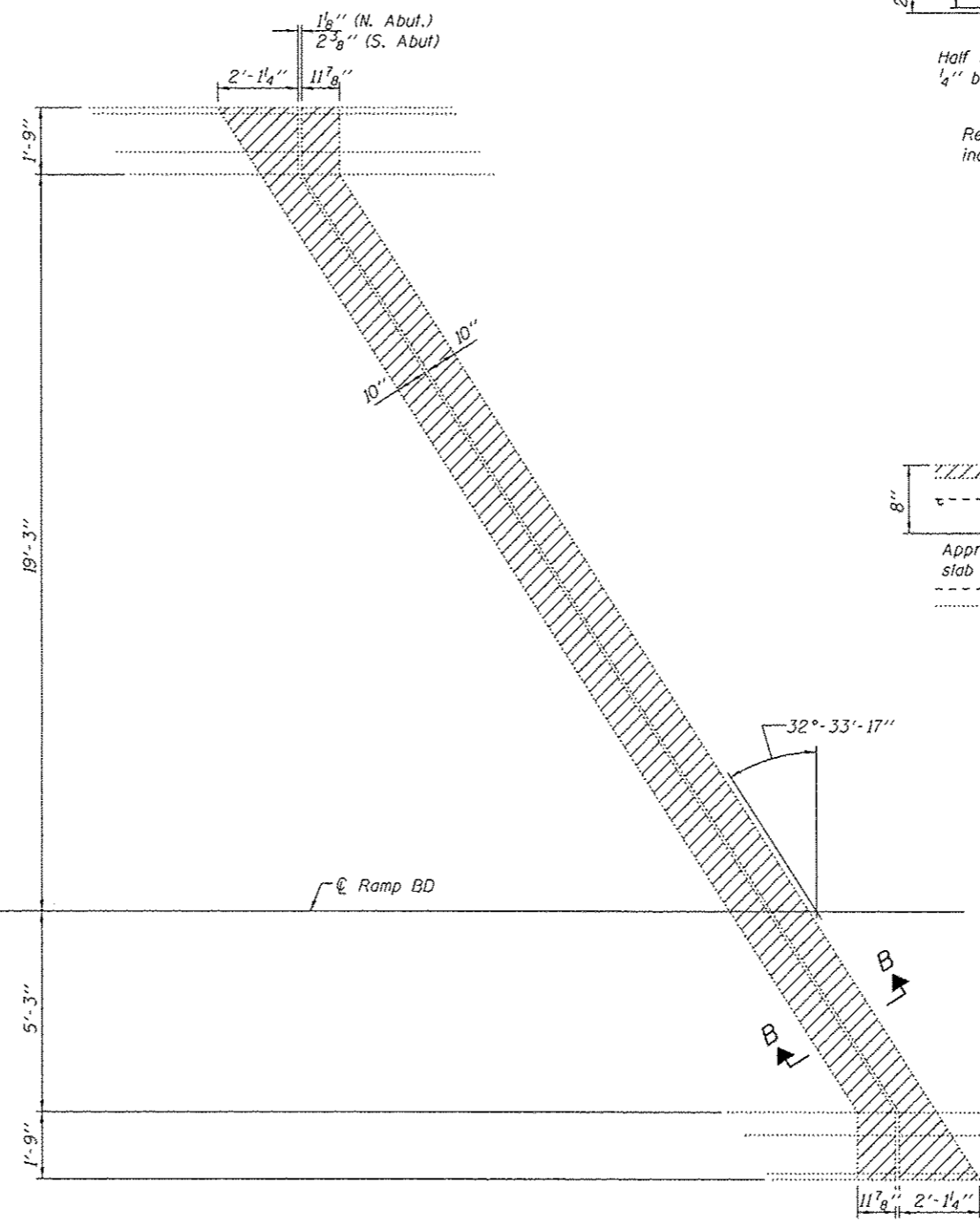
F.A.I. RTE.	SECTION	COUNTY	TOTAL SHEETS	SHEET NO.
39	02 DECK REPAIR 2016-2	WHALEBAGO	24	11

CONTRACT NO. **64106**  
 ILLINOIS FED. AID PROJECT



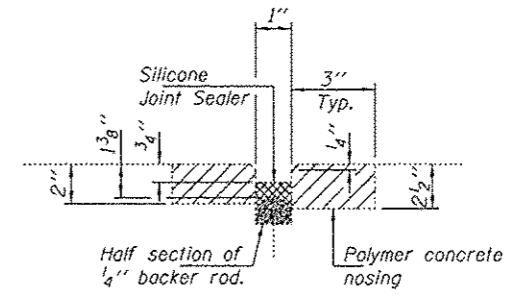
**APPROACH JOINT REMOVAL DETAILS**

(N. Abut. shown  
S. Abut. similar)

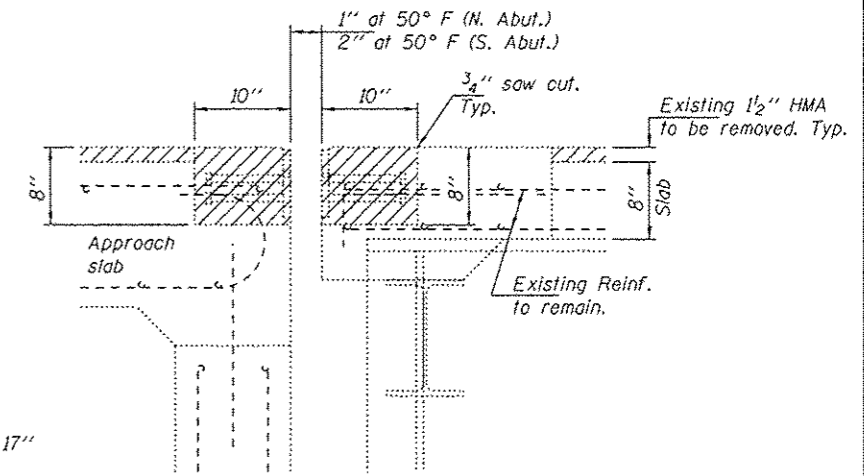


**BRIDGE JOINT REMOVAL DETAILS**

(N. Abut. shown, S. Abut. similar  
except as noted.)



**SECTION A-A**  
Removal of Polymer Concrete is included with Concrete Removal.



**SECTION B-B**  
(Near  $\odot$  Roadway)  
(Dims. at RT L's to end of deck)

Notes:  
Hatched areas indicate removal.  
For Bill of Material, see sheet 3 of 4.

DESIGNED	VHV
CHECKED	SMR
DRAWN	baliva
CHECKED	VHV

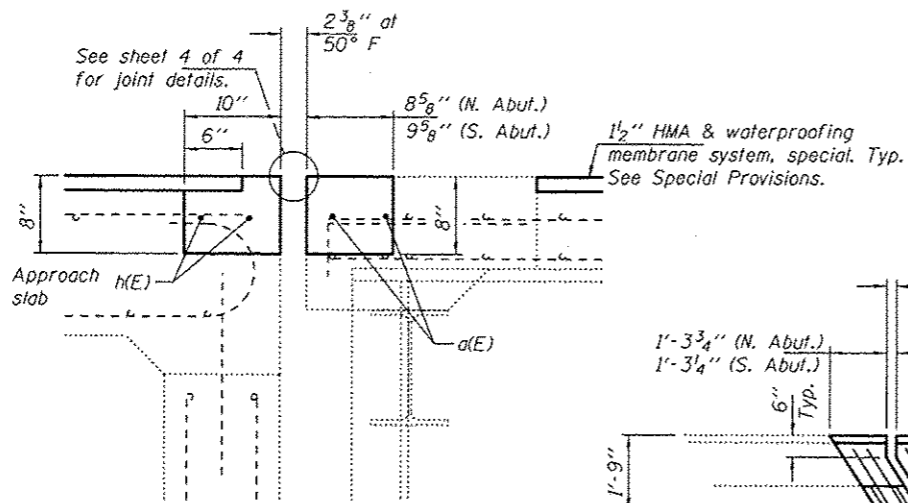
PASSED  
*A. Carl King*  
ACTING ENGINEER OF BRIDGES AND STRUCTURES

DATE	JANUARY 26, 2016
REVISED	
REVISED	

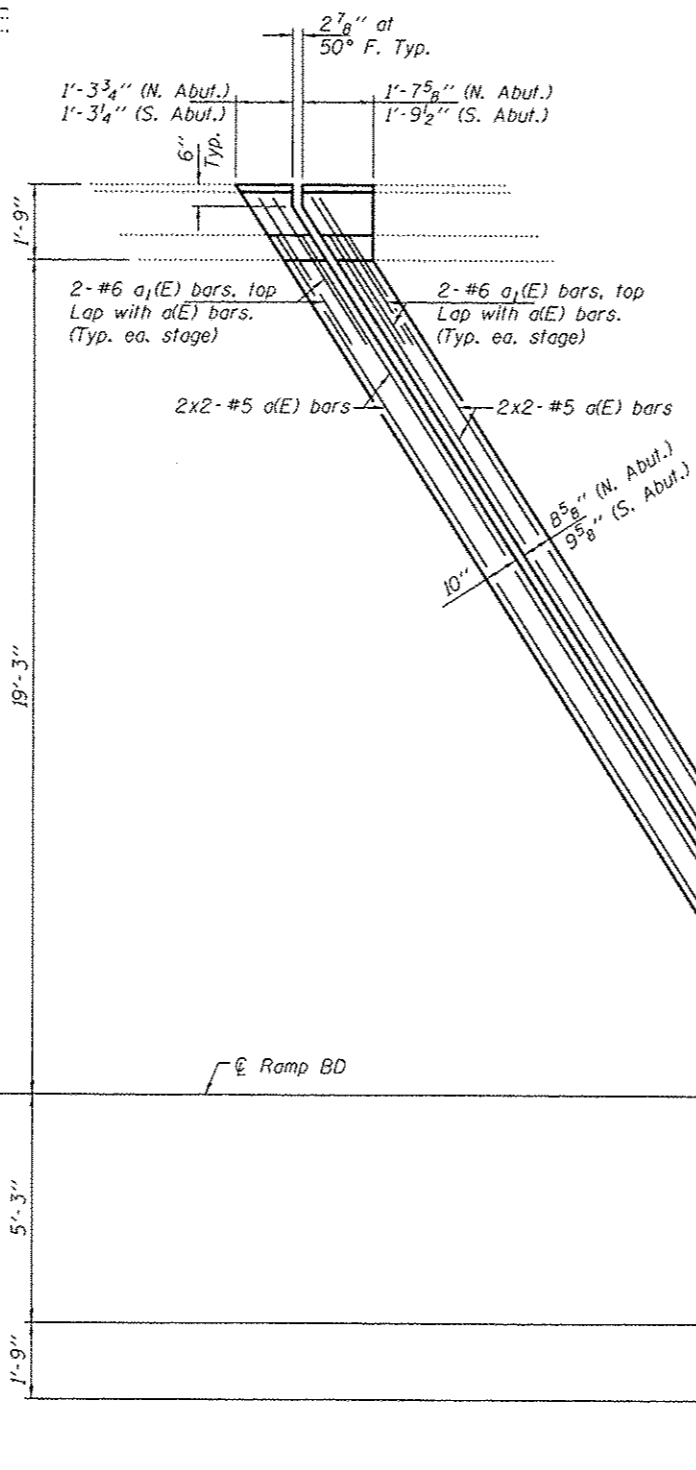
STATE OF ILLINOIS  
DEPARTMENT OF TRANSPORTATION

REMOVAL DETAILS  
SN 101-0139  
SHEET NO. 2 OF 4 SHEETS

F.A.I. RTE.	SECTION	COUNTY	TOTAL SHEETS	SHEET NO.
39	02 DECK REPAIR 2016-2	WINNEBAGO	26	12
CONTRACT NO. 64406				
ILLINOIS FED. AID PROJECT				

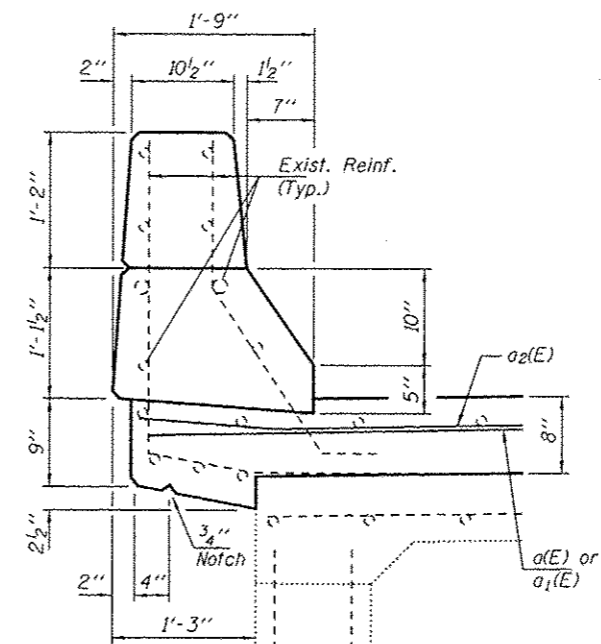


**SECTION B-B**  
(Near Roadway)  
(Dims. at RT L's to end of deck)

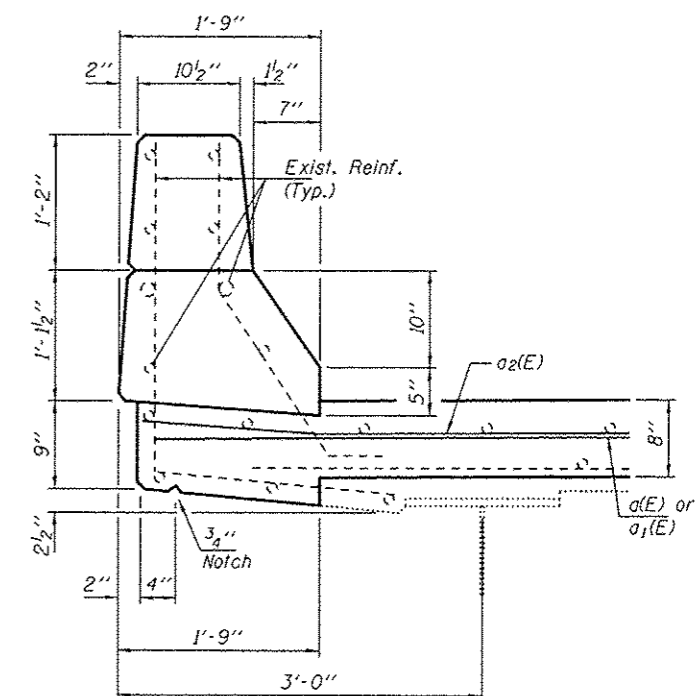


**APPROACH JOINT REPLACEMENT DETAILS**

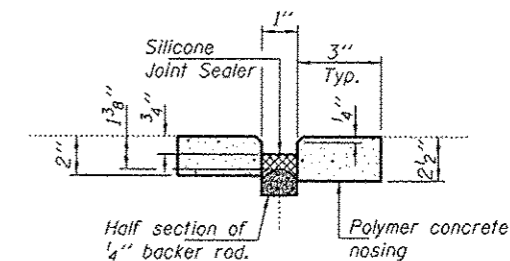
(N. Abut. shown  
S. Abut. similar)



**SECTION THRU  
APPROACH PARAPETS**



**SECTION THRU  
BRIDGE PARAPETS**



**SECTION A-A**

**BILL OF MATERIAL**

Bar	No.	Size	Length	Shape
a(E)	16	#5	18'-0"	
a1(E)	16	#6	4'-0"	
Concrete Removal			Cu. Yd.	4.3
Concrete Superstructure			Cu. Yd.	4.3
Reinforcement Bars, Epoxy Coated			Pound	400

Bars indicated thus 2x2-#5 etc. indicates 2 lines of bars with 2 lengths per line.

DESIGNED VHV  
CHECKED SMR  
DRAWN baliva  
CHECKED VHV

PASSED  
ACTING ENGINEER OF BRIDGES AND STRUCTURES

DATE JANUARY 26, 2016  
REVISED  
REVISED

STATE OF ILLINOIS  
DEPARTMENT OF TRANSPORTATION

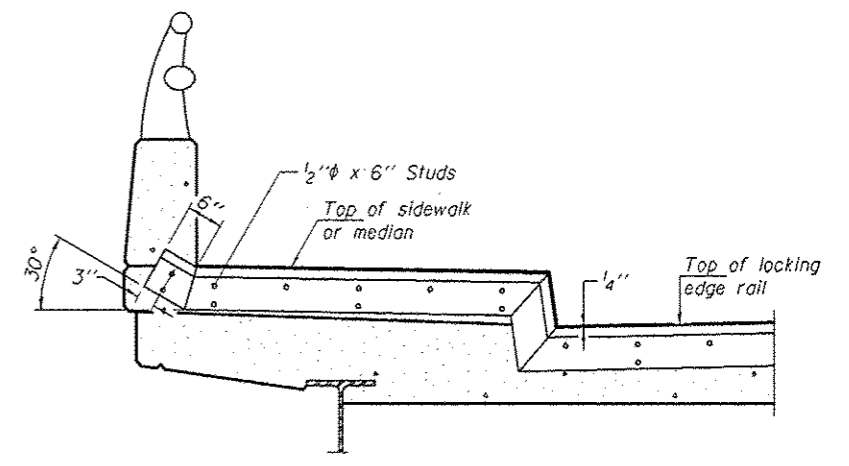
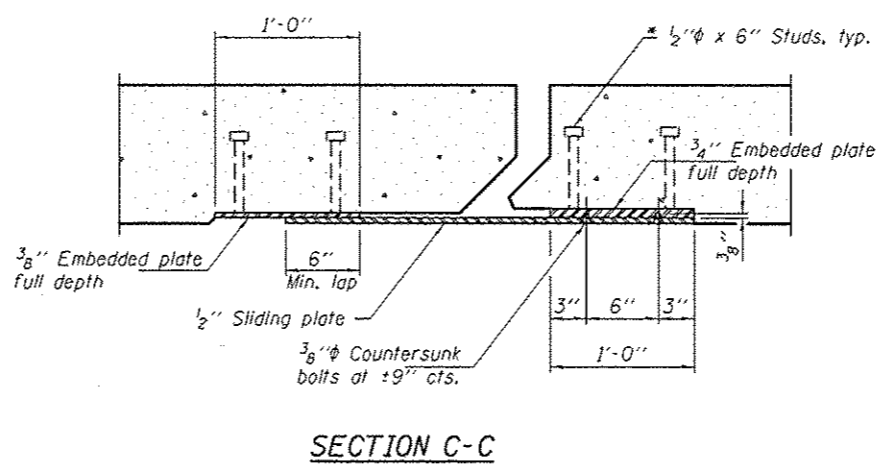
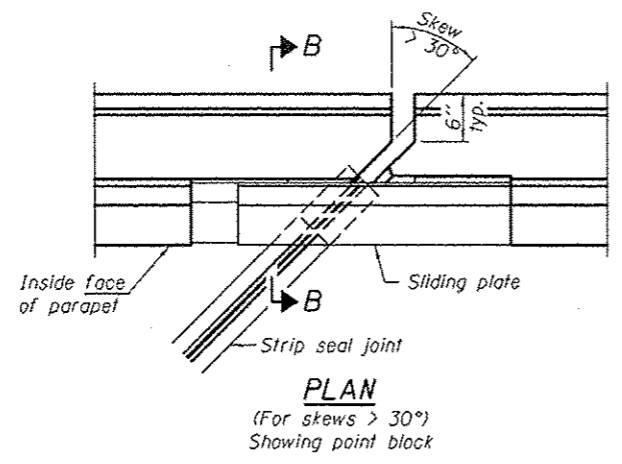
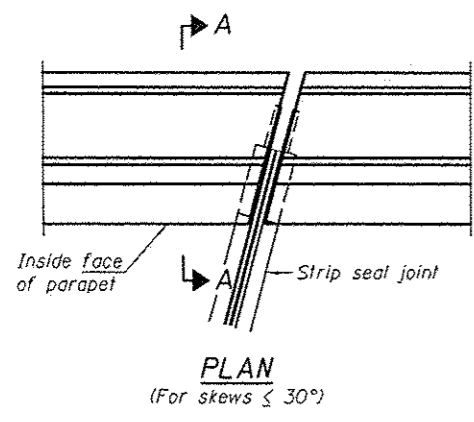
REPLACEMENT DETAILS  
SN 101-0139

SHEET NO. 3 OF 4 SHEETS

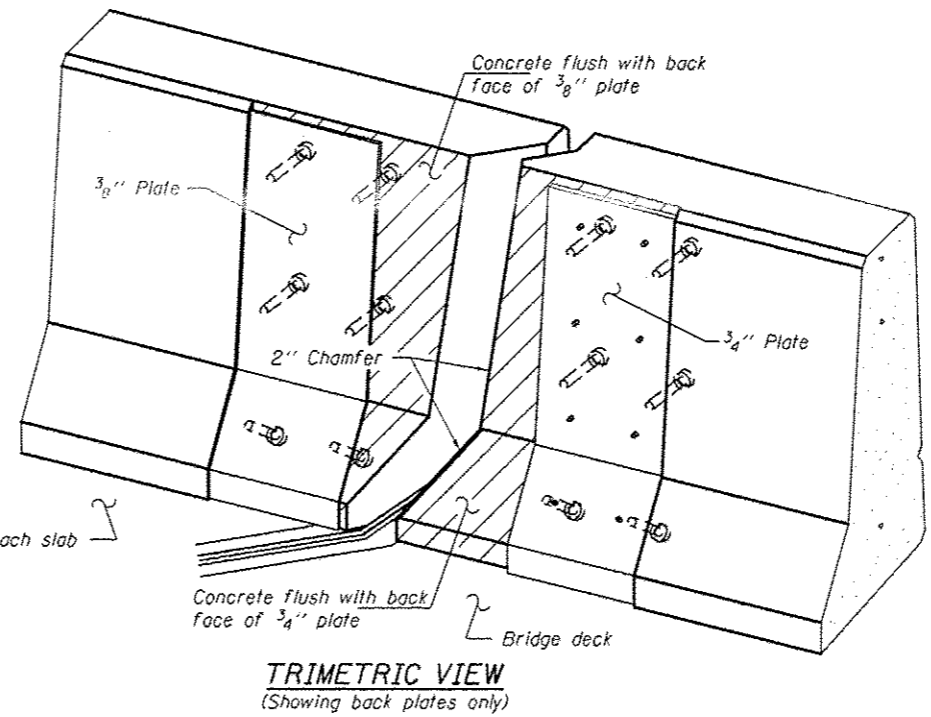
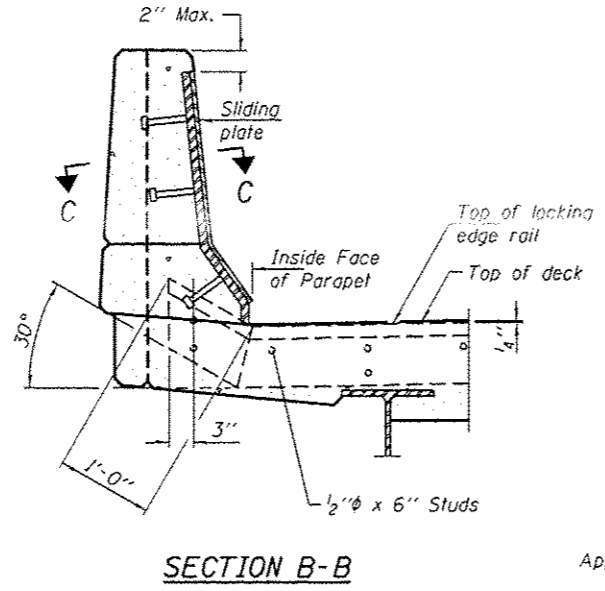
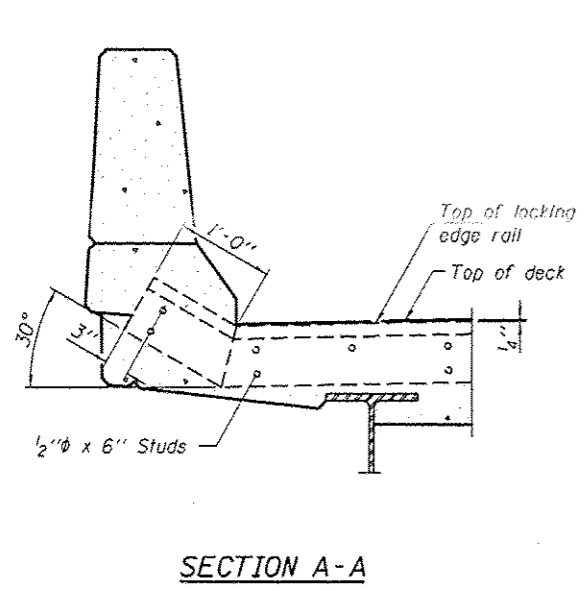
F.A.I. RTE.	SECTION	COUNTY	TOTAL SHEETS	SHEET NO.
39	D2 DECK REPAIR 2016-2	WINNEBAGO	13	13

CONTRACT NO. 6466

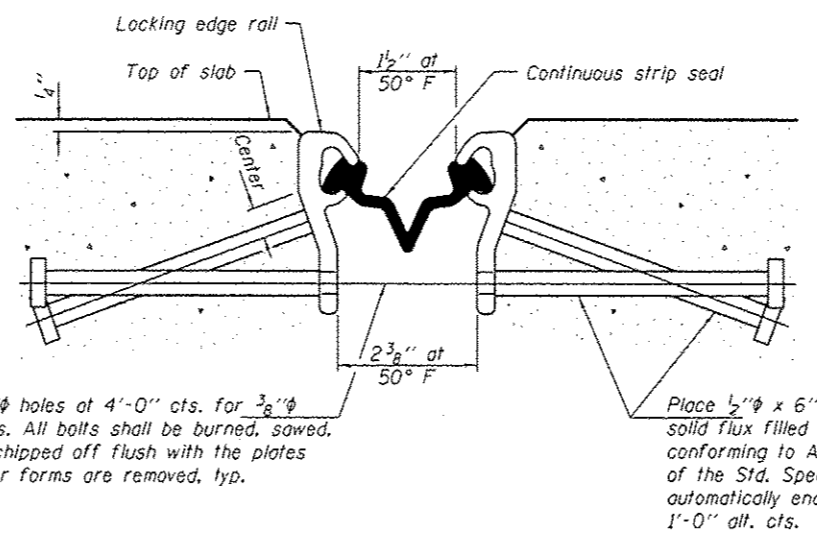
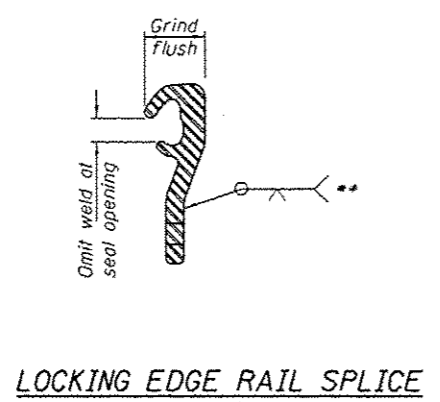
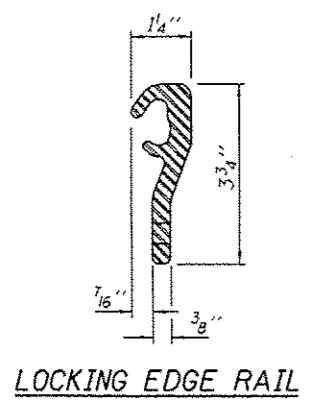
ILLINOIS FED. AID PROJECT



**TYPICAL END TREATMENT AT SIDEWALK OR MEDIAN**  
 Shorter plates with a single row of studs at 12" cts. may be necessary on medians which are shallower than 9". See manufacturer's recommendation.



\* Granular or solid flux filled headed studs conforming to Article 1006.32 of the Std. Specs., automatically end welded.



Place 1/2" φ x 6" granular or solid flux filled headed studs conforming to Article 1006.32 of the Std. Specs., automatically end welded at 1'-0" alt. cts.

**Notes:**  
 The strip seal shall be made continuous and shall have a minimum thickness of 1/4". The configuration of the strip seal shall match the configuration of the Locking Edge Rails.  
 The height and thickness of the Locking Edge Rails shown are minimum dimensions. The actual configuration of the Locking Edge Rails and matching strip seal may vary from manufacturer to manufacturer. Flanged edge rails will not be allowed.  
 The inside of the Locking Edge Rail groove shall be free of weld residue. Locking Edge Rails may be spliced at slope discontinuities and stage construction joints.  
 All steel components shall be galvanized after fabrication according to Article 520.03 of the Standard Specifications. Maximum space between rail segments at stage lines shall be 3/16", sealed with a suitable sealant.  
 Parapet plates and anchorage studs for skews > 30° included in the cost of Preformed Joint Strip Seal.  
 The manufacturer's recommended installation methods shall be followed.

**BILL OF MATERIAL**

Item	Unit	Total
Preformed Joint Strip Seal	Foot	62

DESIGNED VHV	DATE JANUARY 26, 2016
CHECKED SMR	
DRAWN boliva	
CHECKED VHV	

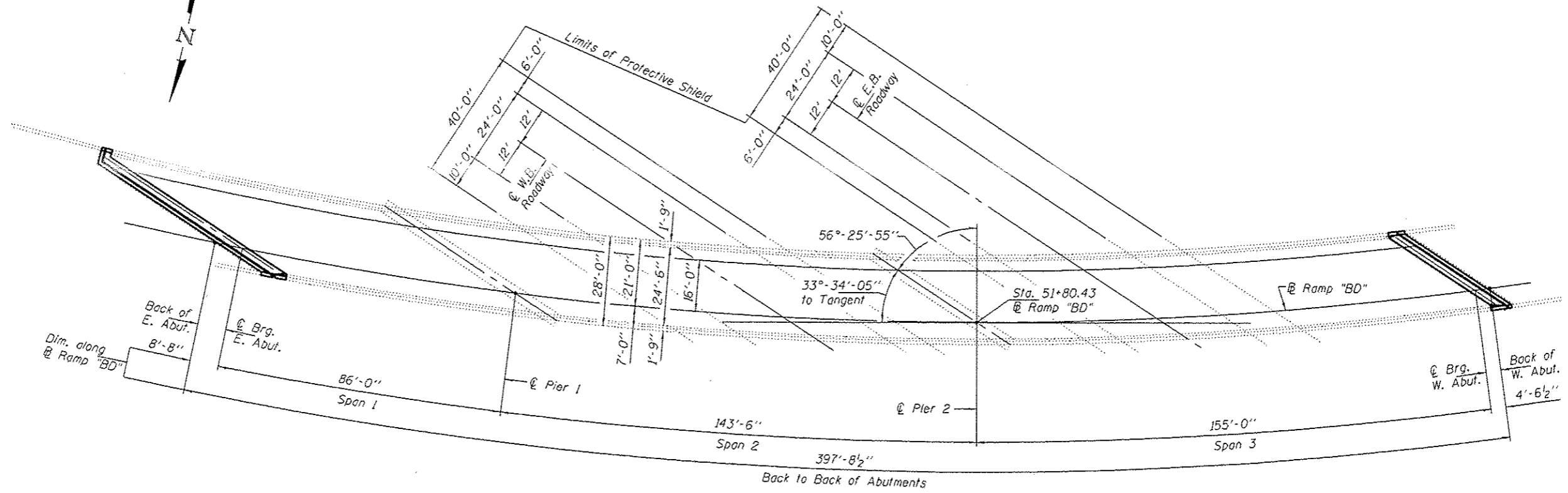
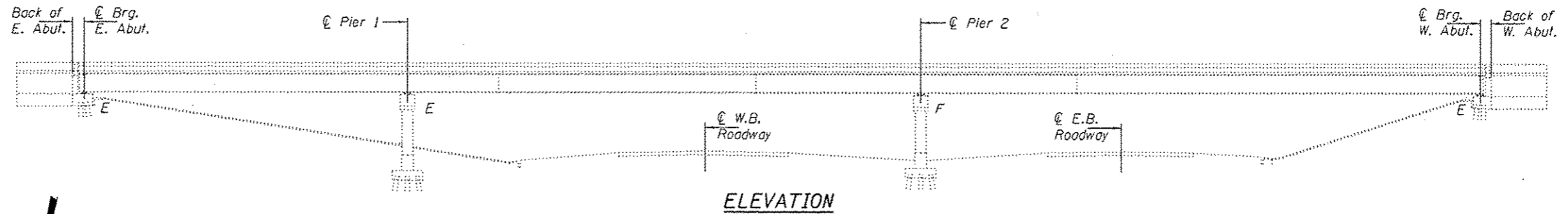
PASSED  
*A. Carl Perry*  
 ACTING ENGINEER OF BRIDGES AND STRUCTURES

STATE OF ILLINOIS  
 DEPARTMENT OF TRANSPORTATION

PREFORMED JOINT STRIP SEAL  
 SN 101-0139

SHEET NO. 4 OF 4 SHEETS

F.A.I. RTE.	SECTION	COUNTY	TOTAL SHEETS	SHEET NO.
33	D2 DECK REPAIR 2016-2	WINNEBAGO	210	14
			CONTRACT NO. 64206	
ILLINOIS FED. AID PROJECT				



**GENERAL NOTES**

Plan dimensions and details relative to existing plans are subject to nominal construction variations. The Contractor shall field verify existing dimensions and details affecting new construction and make necessary approved adjustments prior to construction or ordering of materials. Such variations shall not be cause for additional compensation for a change in scope of the work, however, the Contractor will be paid for the quantity actually furnished at the unit price bid for the work.

Reinforcement bars designated (E) shall be epoxy coated.

Prior to pouring the new concrete deck, all heavy or loose rust, loose mill scale, and other loose or potentially detrimental foreign material shall be removed from the surfaces in contact with concrete. Tightly adhered paint may remain unless otherwise noted. Removal shall be accomplished by methods that will not damage the steel and the cost will be included in the pay item covering removal of the existing concrete.

Existing reinforcement bars extending into the removal area shall be cleaned, straightened and incorporated into the new construction. Any reinforcement bars that are damaged during concrete removal shall be replaced with an approved bar splicer or anchorage system. Cost included with Concrete Removal.

The new deck surface area shall have its final finish tined according to Article 420.09(e)(1) of the Standard Specifications. Cost included with Concrete Superstructure.

Joint openings shall be adjusted according to Article 520.04 of the Standard Specifications when the deck is poured at an ambient temperature other than 50° F. Work to be completed under road closure.

**TOTAL BILL OF MATERIAL**

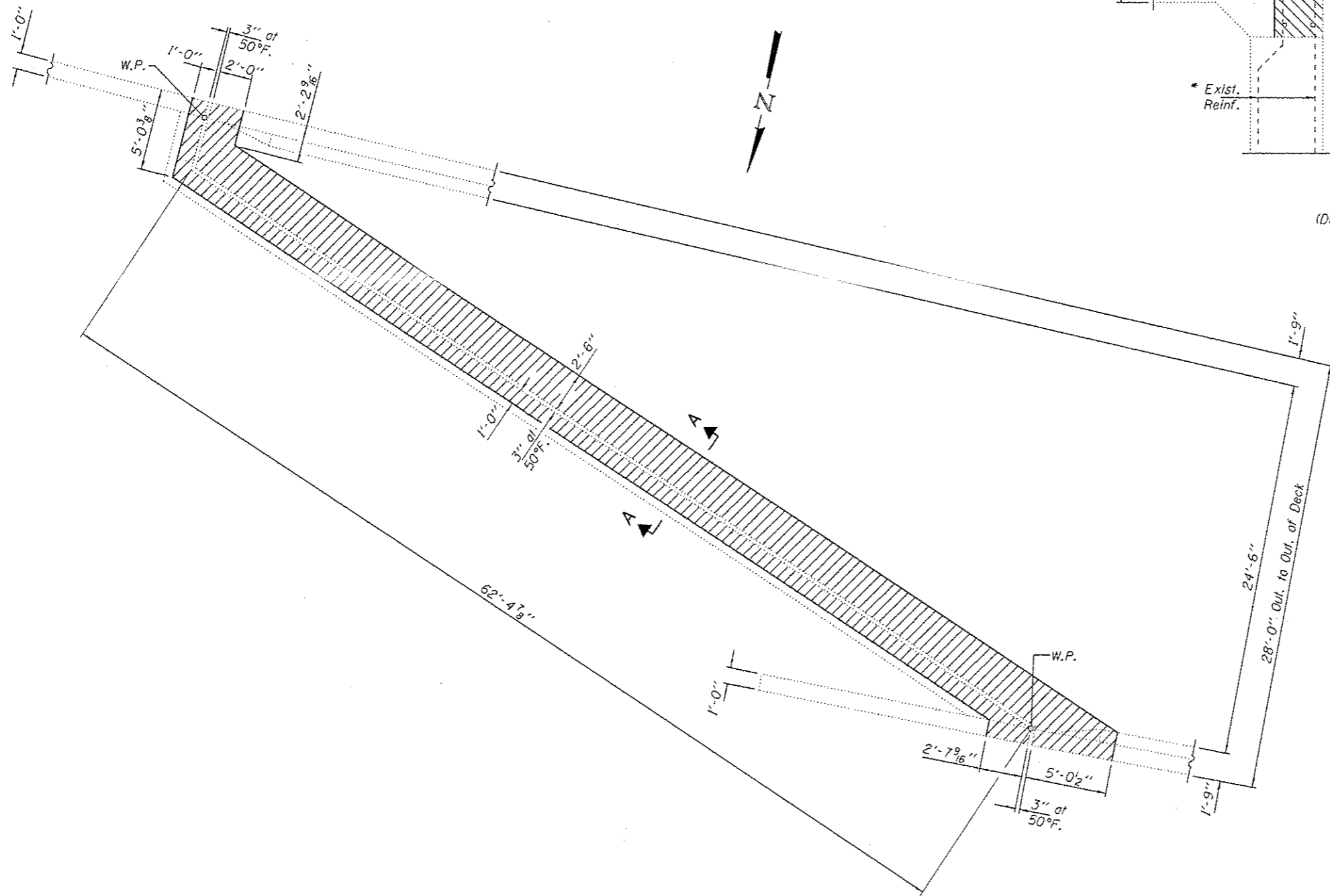
ITEM	UNIT	QUANTITY
Concrete Removal	Cu. Yd.	17.9
Concrete Superstructure	Cu. Yd.	17.9
Reinforcement Bars, Epoxy Coated	Pound	2490
Preformed Joint Strip Seal	Foot	41
Polymerized Hot-Mix Asphalt Surface Course, Mix "D", N90	Tons	91
* Deck Slab Repair (Partial)	Sq. Yd.	162
* Deck Slab Repair (Full Depth, Type I)	Sq. Yd.	54
* Deck Slab Repair (Full Depth, Type II)	Sq. Yd.	54
HMA Surface Removal (Deck)	Sq. Yd.	1080
Waterproofing Membrane System, Special	Sq. Yd.	1080
Expansion Joint (Special)	Foot	68
Polymer Concrete	Cu. Ft.	5
Protective Shield	Sq. Yd.	235

\* Quantities are estimated. Actual locations and sizes to be determined in the field, by the Engineer.

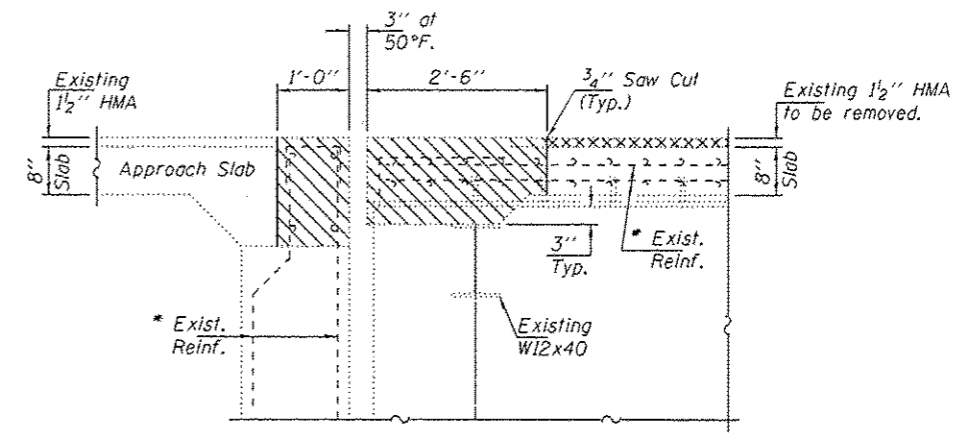


Expires: November 30, 2016

DESIGNED - <i>V. H. V. H.</i>	DATE - JANUARY 26, 2016	<b>STATE OF ILLINOIS DEPARTMENT OF TRANSPORTATION</b>	<b>GENERAL PLAN &amp; ELEVATION RAMP "BD" OVER F.A.P. ROUTE 301 (U.S. ROUTE 20 BYPASS) SN 101-0136</b>		F.A.I. RTE. 39	SECTION D2 DECK REPAIR 2016-2	COUNTY WINNEBAGO	TOTAL SHEETS 26	SHEET NO. 15
CHECKED - <i>Stephan M. Ryan</i>	<i>David Carl Puzey</i> ACTING ENGINEER OF BRIDGES AND STRUCTURES		SHEET NO. 1 OF 6 SHEETS		CONTRACT NO. <b>69206</b>		ILLINOIS FED. AID PROJECT		
DRAWN - Kyle M. Stoffan			PASSED						
CHECKED - <i>VHV</i> <i>SMR</i>									



**EAST ABUTMENT  
BRIDGE JOINT REMOVAL DETAILS**



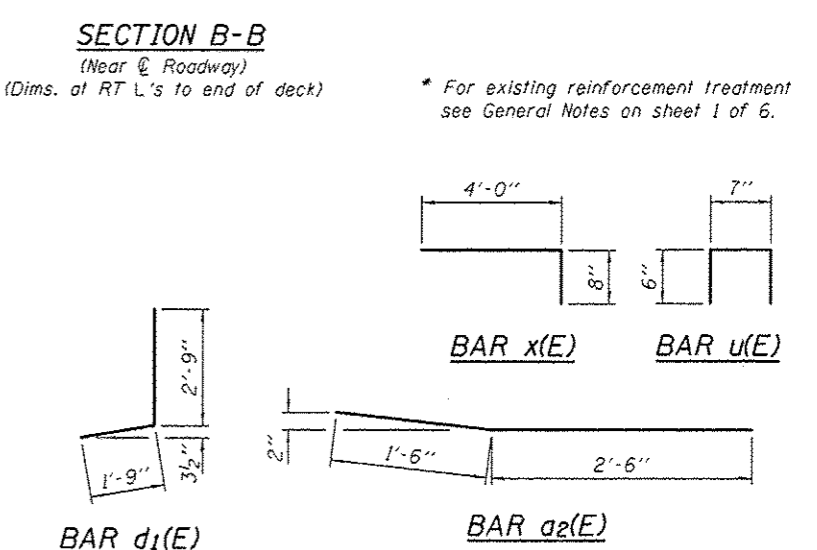
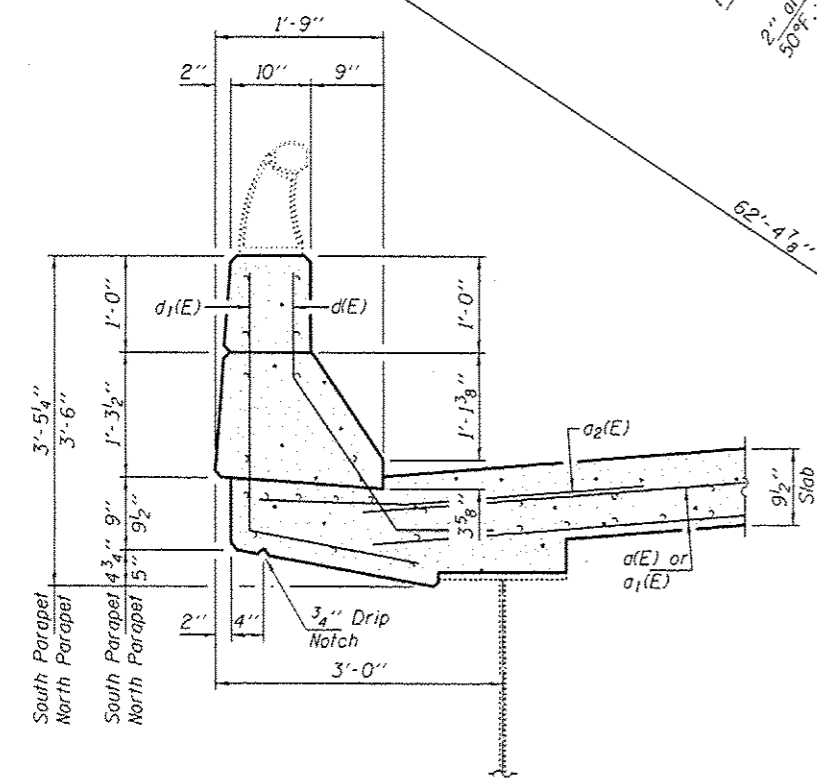
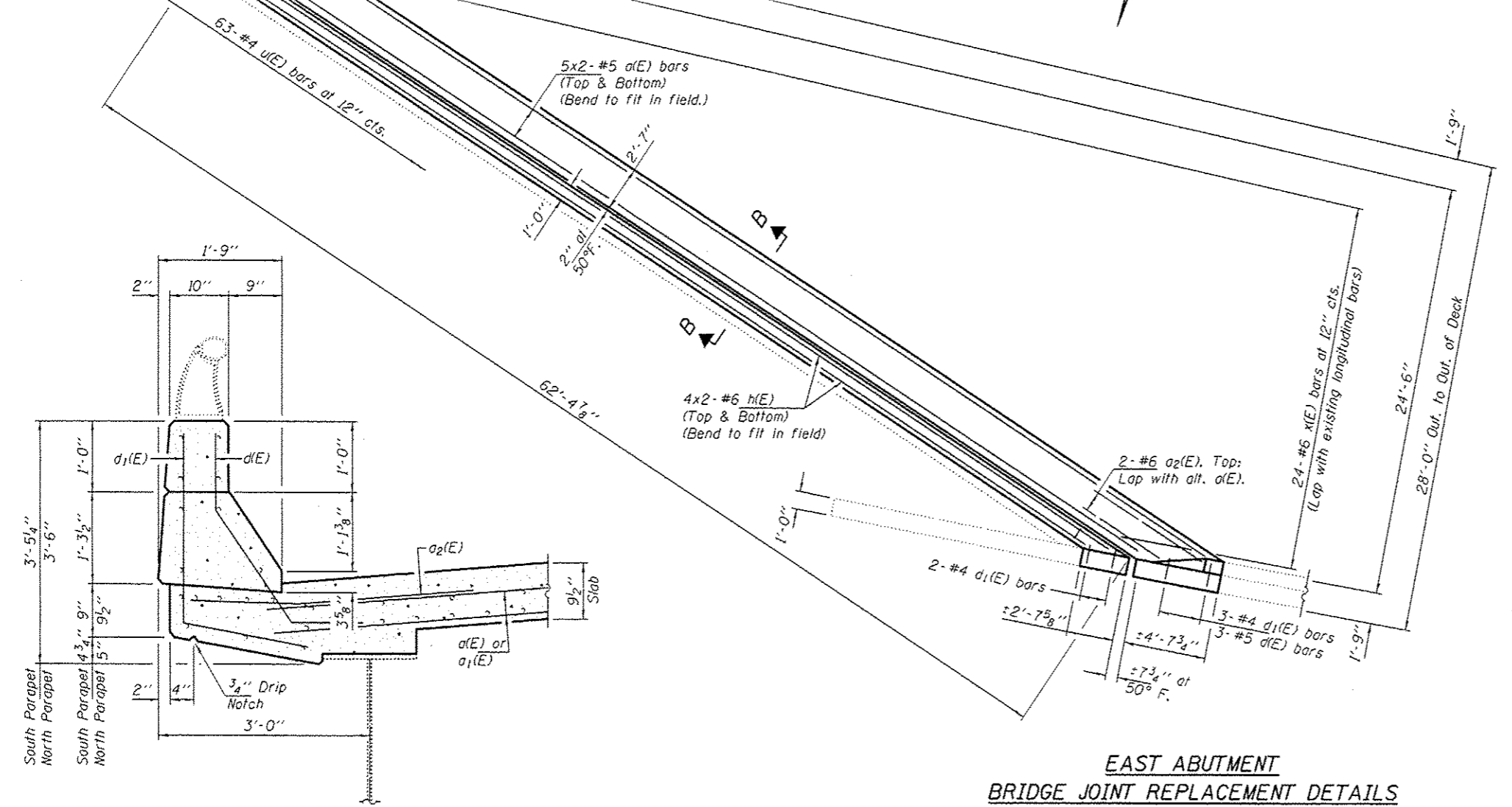
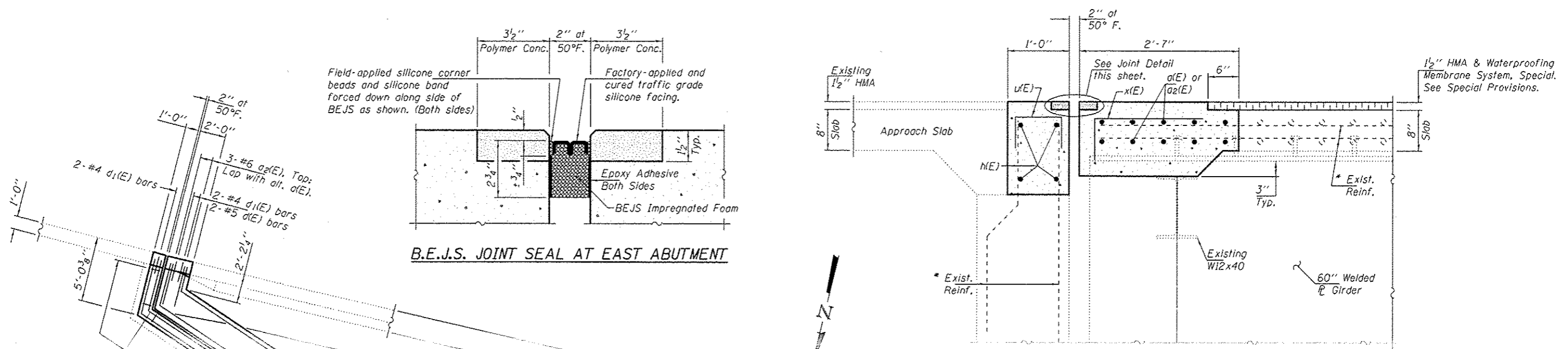
**SECTION A-A**  
(Near E Roadway)  
(Dims. at RT L's to end of deck)

\* For existing reinforcement treatment see General Notes on sheet 1 of 6.

Note:  
Hatched areas indicate concrete removal.  
Cross-hatched areas indicate HMA removal.

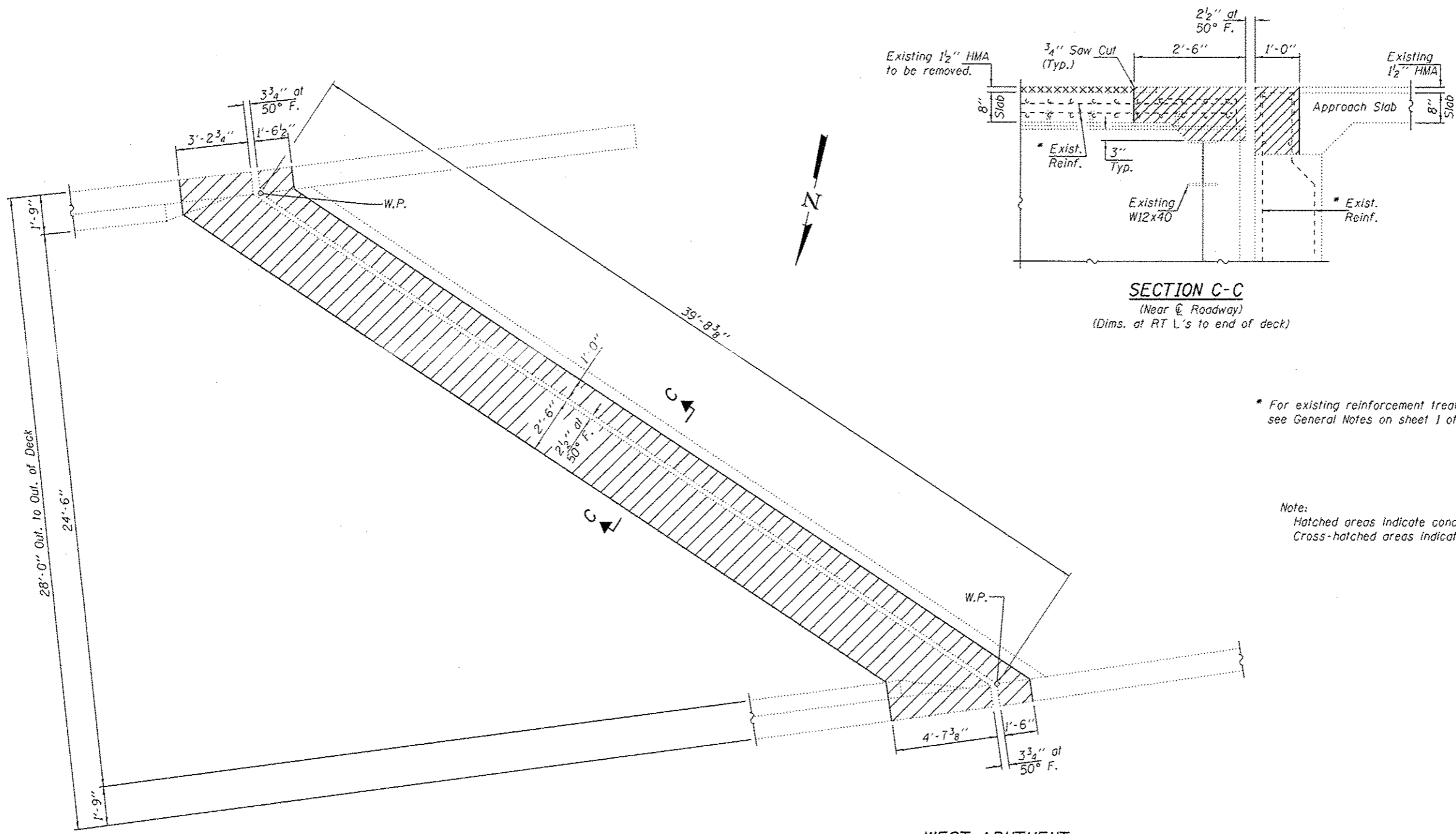
DESIGNED - VHV	DATE - JANUARY 26, 2016	STATE OF ILLINOIS DEPARTMENT OF TRANSPORTATION	EAST ABUTMENT JOINT REMOVAL DETAILS		F.A.I. RTE.	SECTION	COUNTY	TOTAL SHEETS	SHEET NO.
CHECKED - SMR			SN 101-0136		39	D2 DECK REPAIR 2016-2	WINNEBAGO	26	16
DRAWN - Kyle M. Steffen	PASSED <i>[Signature]</i> ACTING ENGINEER OF BRIDGES AND STRUCTURES		SHEET NO. 2 OF 6 SHEETS		CONTRACT NO. 64104				
CHECKED - VHV SMR					ILLINOIS FED. AID PROJECT				





**BILL OF MATERIAL**

Bar	No.	Size	Length	Shape
a(E)	20	#5	34'-9"	—
a2(E)	6	#6	4'-0"	—
d(E)	5	#5	4'-3"	J
d1(E)	9	#4	4'-6"	J
h(E)	8	#6	36'-0"	—
u(E)	63	#4	1'-7"	□
x(E)	24	#6	4'-8"	—
Concrete Removal			Cu. Yd.	11
Concrete Superstructure			Cu. Yd.	11
Reinforcement Bars, Epoxy Coated			Pound	1480
Polymer Concrete			Cu. Ft.	5
Expansion Joint (Special)			Foot	68

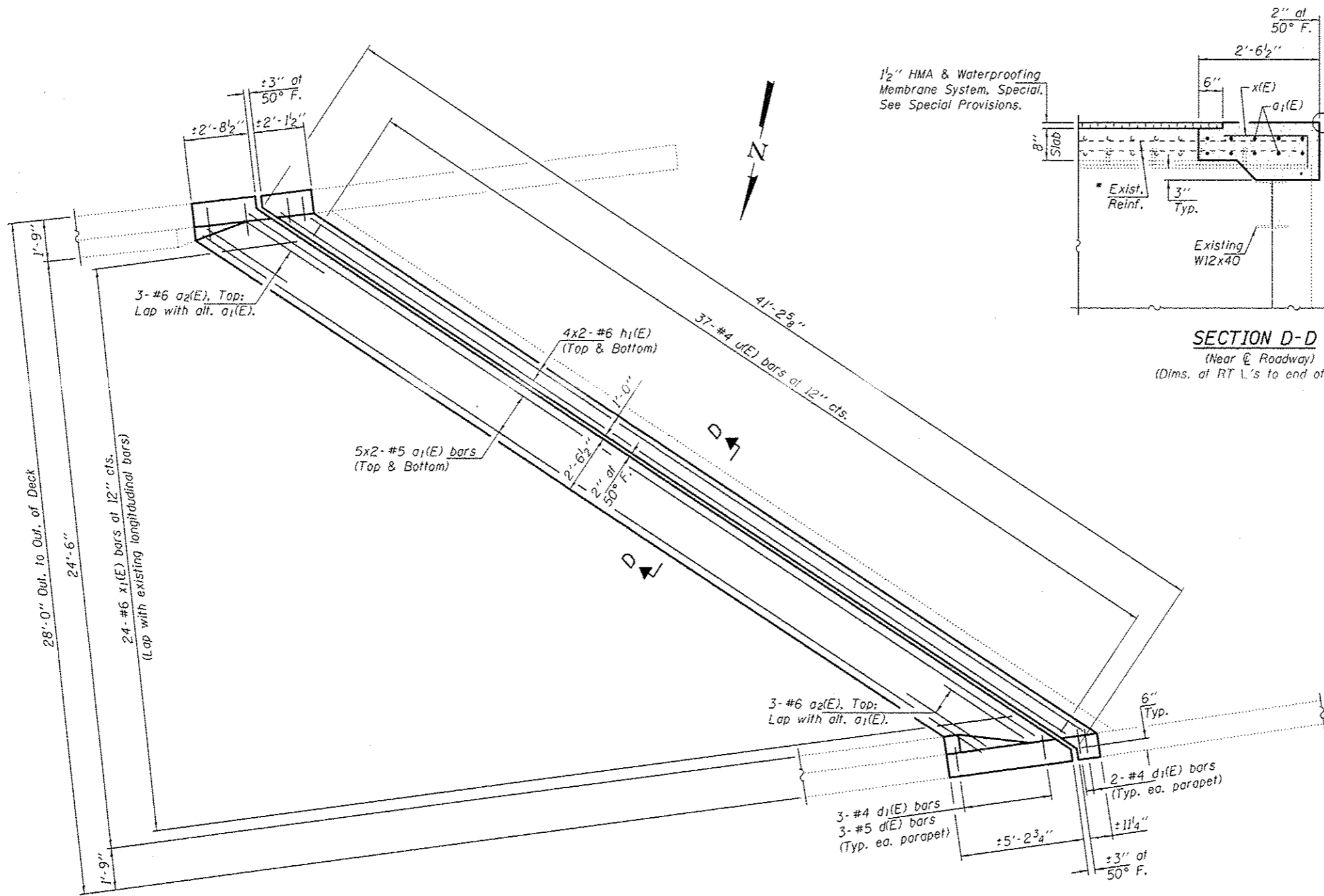


**WEST ABUTMENT  
BRIDGE JOINT REMOVAL DETAILS**

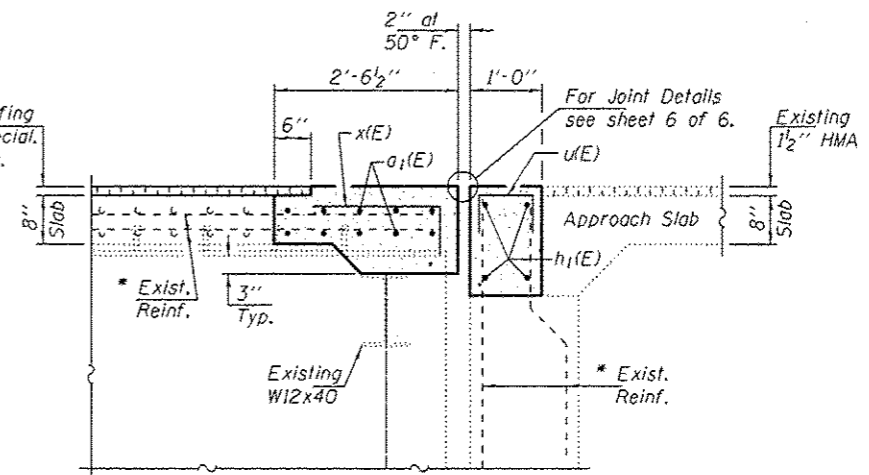
\* For existing reinforcement treatment see General Notes on sheet 1 of 6.

Note:  
Hatched areas indicate concrete removal.  
Cross-hatched areas indicate HMA removal.

DESIGNED - VHV	DATE - JANUARY 26, 2016	STATE OF ILLINOIS DEPARTMENT OF TRANSPORTATION	WEST ABUTMENT JOINT REMOVAL DETAILS SN 101-0136	F.A.I. RTE.	SECTION	COUNTY	TOTAL SHEETS	SHEET NO.
CHECKED - SMR	PASSED <i>[Signature]</i> ACTING ENGINEER OF BRIDGES AND STRUCTURES			39	D2 DECK REPAIR 2016-2	WINNEBAGO	20	18
DRAWN - Kyle M. Steffen			SHEET NO. 4 OF 6 SHEETS	CONTRACT NO. 64206				
CHECKED - VHV SMR				ILLINOIS FED. AID PROJECT				



1/2" HMA & Waterproofing Membrane System, Special. See Special Provisions.

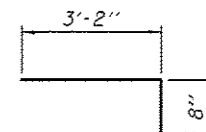


**SECTION D-D**

(Near E Roadway)  
(Dims. at RT L's to end of deck)

\* For existing reinforcement treatment see General Notes on sheet 1 of 6.

Note:  
For parapet and reinforcement details see sheet 3 of 6.



**BAR x1(E)**

**WEST ABUTMENT  
BRIDGE JOINT REPLACEMENT DETAILS**

**BILL OF MATERIAL**

Bar	No.	Size	Length	Shape
a1(E)	20	#5	22'-6"	—
a2(E)	6	#6	4'-0"	—
d(E)	6	#5	4'-3"	J
d1(E)	10	#4	4'-6"	J
h1(E)	8	#6	22'-6"	—
u(E)	37	#4	1'-7"	□
x1(E)	24	#6	3'-10"	┌
Concrete Removal			Cu. Yd.	6.9
Concrete Superstructure			Cu. Yd.	6.9
Reinforcement Bars, Epoxy Coated			Pound	1010
Preformed Joint Strip Seal			Foot	41

**BAR LAPS**

#5 Bars = 3'-6"  
#6 Bars = 4'-0"

DESIGNED - VHV  
CHECKED - SMR  
DRAWN - Kyle M. Staffon  
CHECKED - VHV SMR

DATE - JANUARY 26, 2016  
PASSED  
*[Signature]*  
ACTING ENGINEER OF BRIDGES AND STRUCTURES

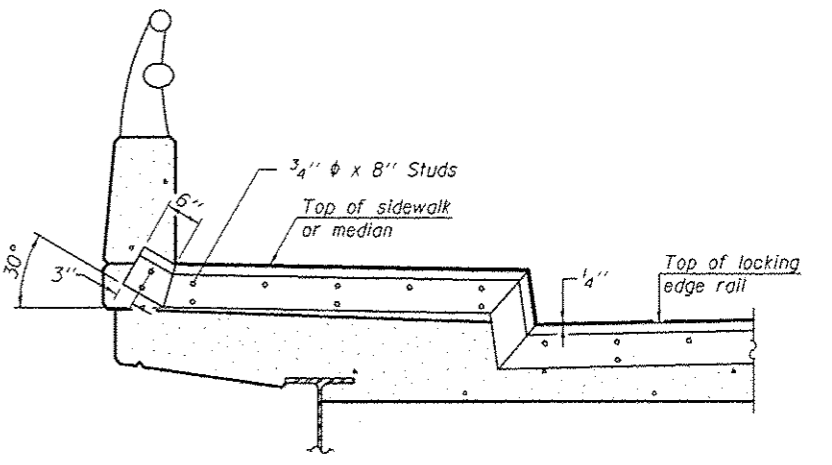
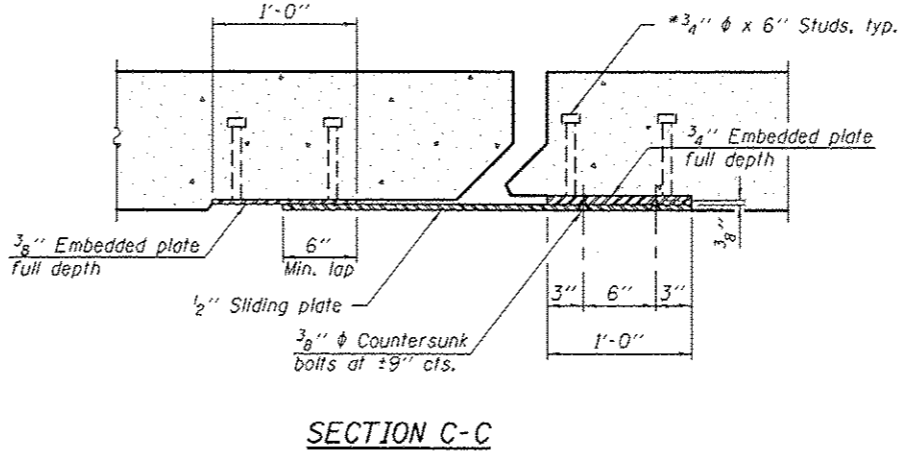
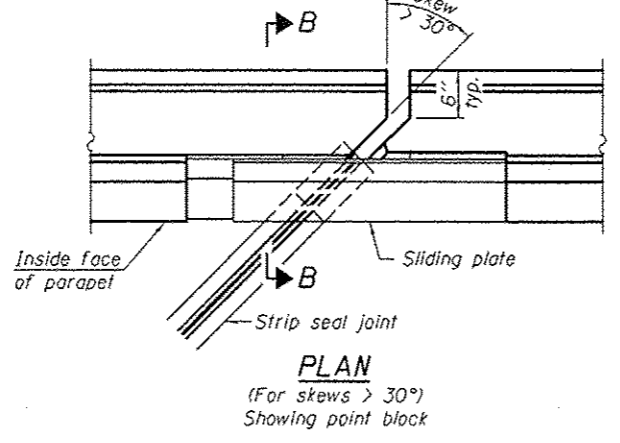
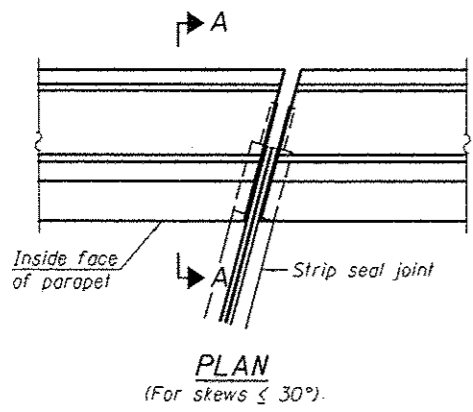
STATE OF ILLINOIS  
DEPARTMENT OF TRANSPORTATION

WEST ABUTMENT JOINT REPLACEMENT DETAILS  
SN 101-0136

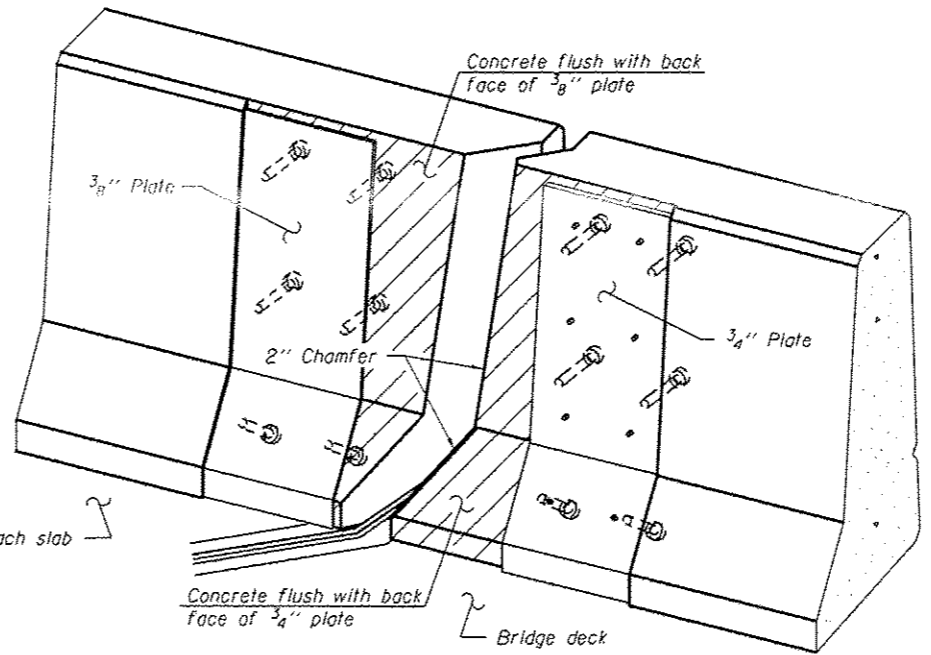
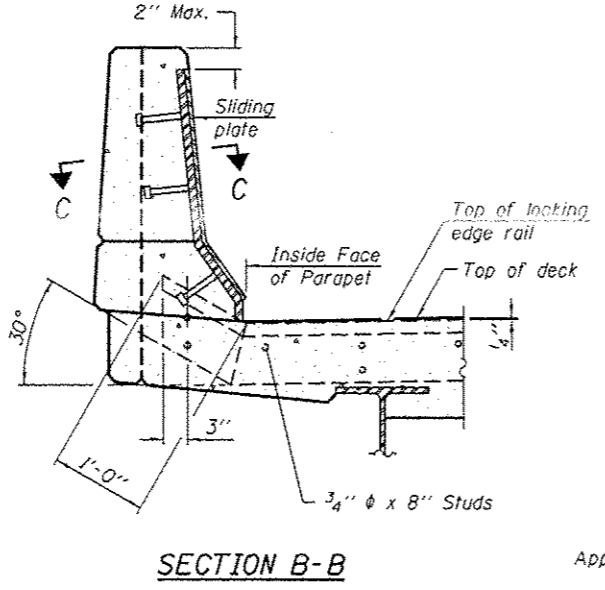
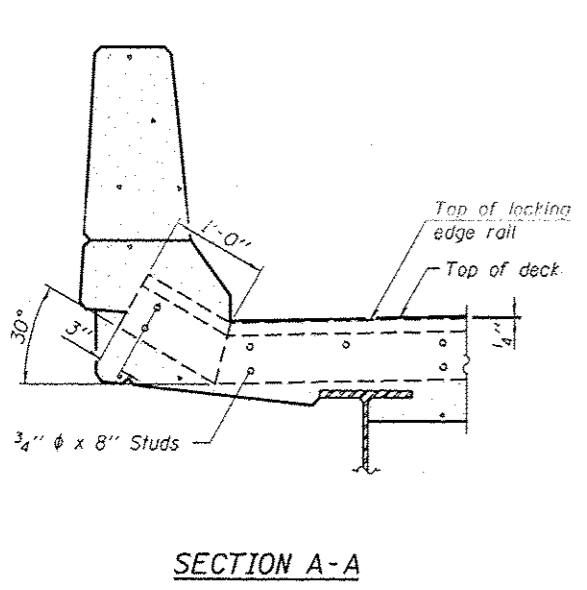
SHEET NO. 5 OF 6 SHEETS

F.A.I. RTE.	SECTION	COUNTY	TOTAL SHEETS	SHEET NO.
39	D2 DECK REPAIR 2016-2	WINNEBAGO	210	19

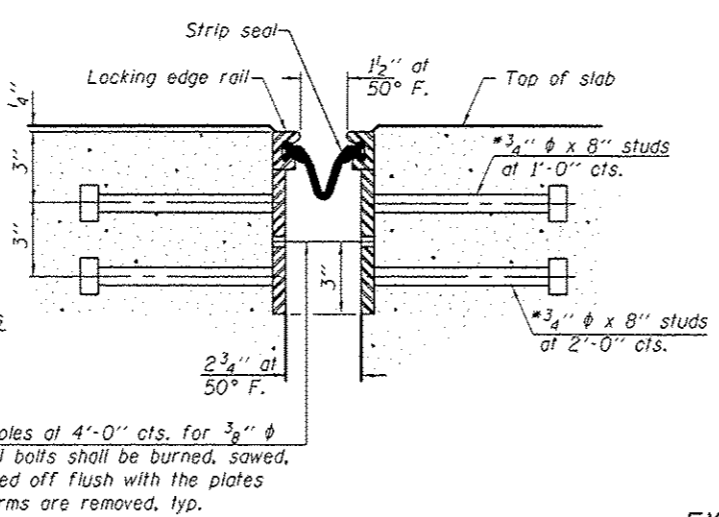
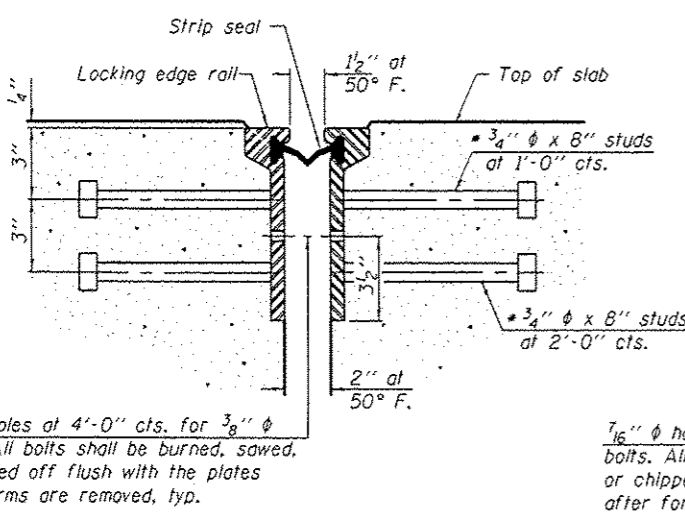
CONTRACT NO. 641.06  
ILLINOIS FED. AID PROJECT



**TYPICAL END TREATMENT AT SIDEWALK OR MEDIAN**  
 Shorter plates with a single row of studs at 12" cts. may be necessary on medians which are shallower than 9". See manufacturer's recommendation.

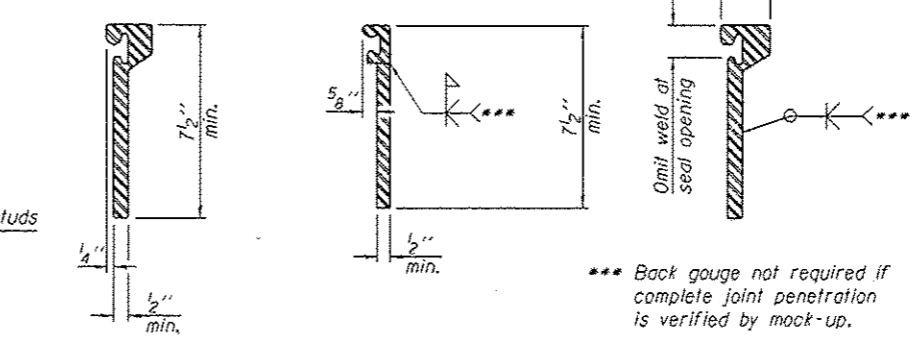


**Notes:**  
 The strip seal shall be made continuous and shall have a minimum thickness of 1/4". The configuration of the strip seal shall match the configuration of the Locking Edge Rails. Open or "webbed" strip seal gland configurations are not permitted. The gland shall be sized for a maximum rated movement of 4 inches.  
 The Locking Edge Rails depicted are conceptual only, except for the minimum dimensions shown. The actual configuration of the Locking Edge Rails and matching strip seal may vary from manufacturer to manufacturer. Flanged edge rails will not be allowed. Locking Edge Rails may be spliced at slope discontinuities.  
 The manufacturer's recommended installation methods shall be followed.  
 The joint opening and deck dimensions detailed on the superstructure are based on a rolled rail expansion joint. If the Contractor elects to use the welded rail expansion joint, the opening and deck dimensions shall be modified according to the dimensions detailed on this sheet. Required modifications shall be made at no additional cost to the State.  
 All steel components shall be galvanized after fabrication according to Article 520.03 of the Standard Specifications. Maximum space between rail segments shall be 3/16", sealed with a suitable sealant. Joints in rails within 10 ft. of curbs shall be welded.  
 Parapet plates and anchorage studs for skews > 30° included in the cost of Preformed Joint Strip Seal.



7/16"  $\phi$  holes at 4'-0" cts. for 3/8"  $\phi$  bolts. All bolts shall be burned, sawed, or chipped off flush with the plates after forms are removed, typ.

7/16"  $\phi$  holes at 4'-0" cts. for 3/8"  $\phi$  bolts. All bolts shall be burned, sawed, or chipped off flush with the plates after forms are removed, typ.



\*\*\* Back gauge not required if complete joint penetration is verified by mock-up.

**LOCKING EDGE RAIL SPLICE**  
 The inside of the locking edge rail groove shall be free of weld residue.  
 Rolled rail shown, welded rail similar.

**BILL OF MATERIAL**

Item	Unit	Total
Preformed Joint Strip Seal	Foot	41

EJ-SSJ

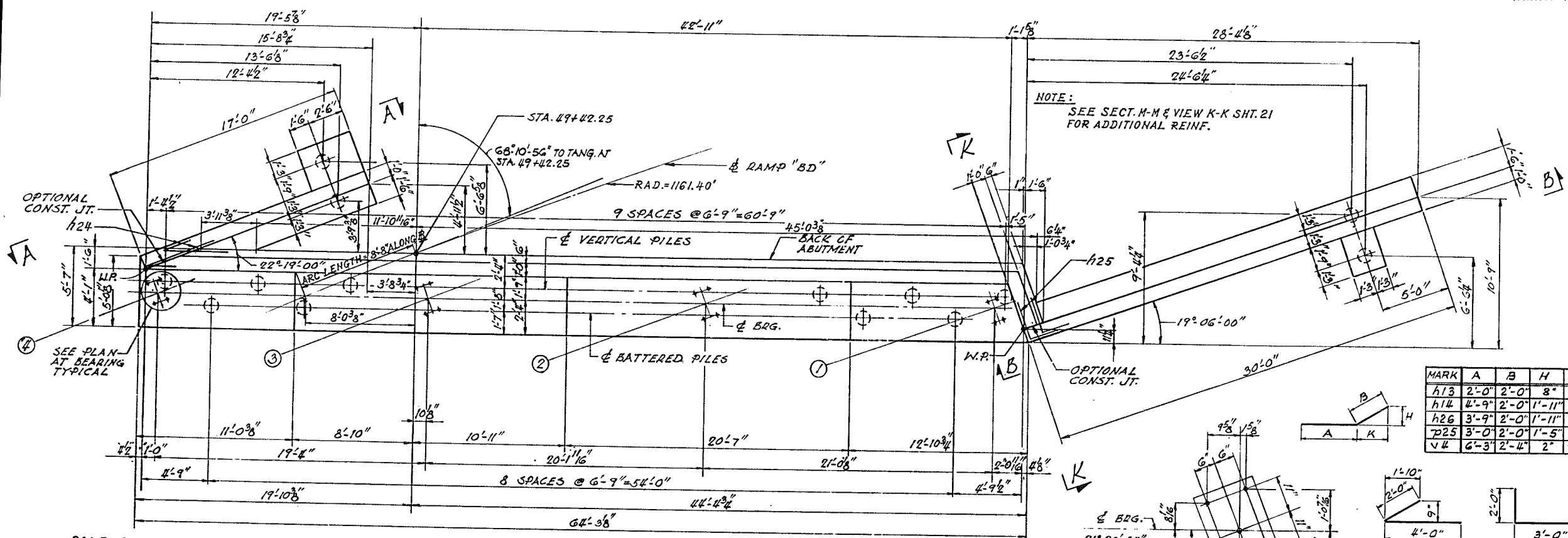
1-27-12

\* Granular or solid flux filled headed studs conforming to Article 1006.32 of the Std. Specs., automatically end welded.



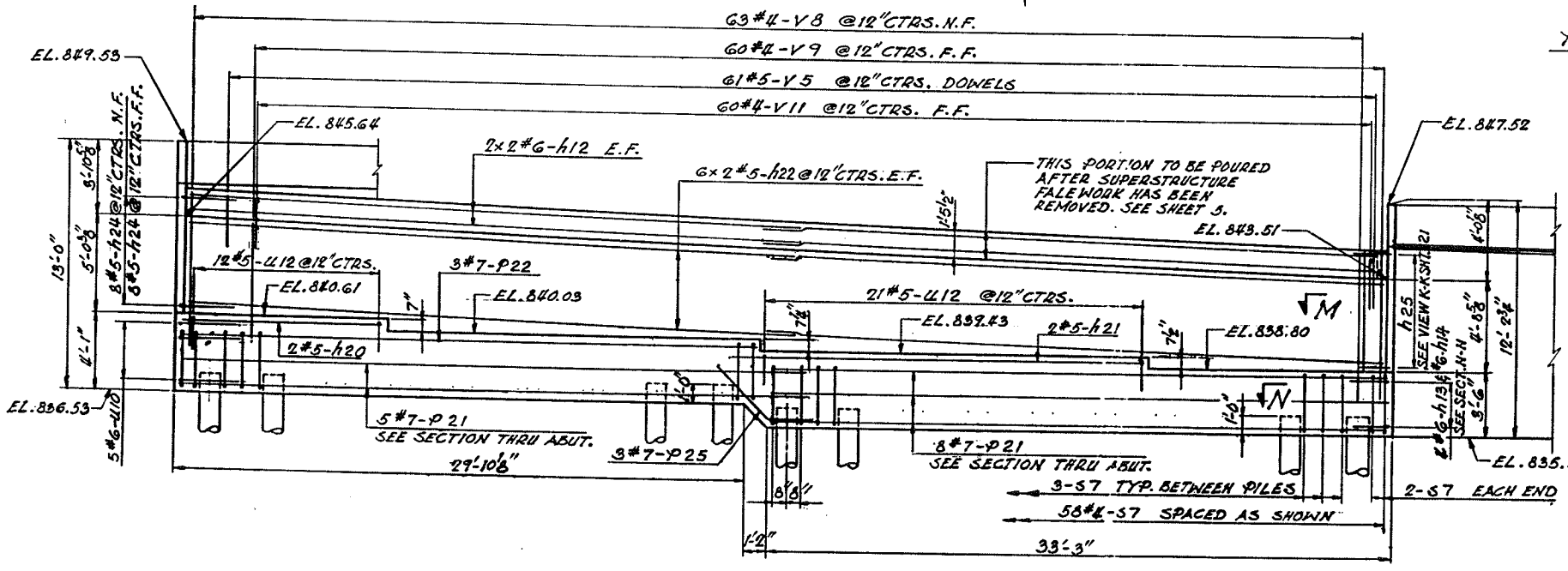
NOTE:  
FOR WINGWALL FTG. REINF. SEE SECT. G-G SHT. 21

ROUTE NO.	SECTION	COUNTY	TOTAL SHEETS	SHEET NO.
F.A. 194	201-3HB-2	WINNEBAGO	123	93
STA.	TO STA.			
FILE & RES NO.	ALLOWS	PROJECT		



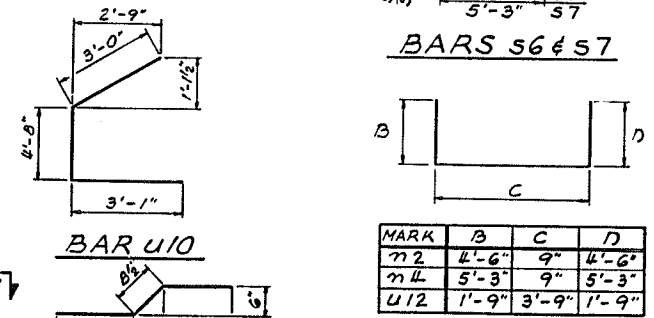
PILE DATA  
TYPE: CONCRETE  
CAPACITY: 35 TONS  
EST. LENGTH: 45 FT.  
NO. REQ'D: 23 \*  
\* INCLUDES ONE TEST PILE

PLAN  
NORTH



ELEVATION

PLAN AT BEARING



NOTE:  
ALL BAR DIMENSIONS ARE OUT TO OUT.

NOTES:  
SPACE REINFORCEMENT IN CAP TO MISS ANCHOR BOLTS.  
POUR STEPS MONOLITHICALLY WITH CAP.  
FOR ELEV. A-A, B-B SEE SHEET 20.  
BARS INDICATED THIS: Gx2#5H, ETC.  
INDICATE G LINES OF BARS WITH 2 BAR LENGTH PER LINE.  
ALL EDGES SHALL HAVE STANDARD 3/4" CHAMFERS EXCEPT AS NOTED.  
WORK THIS SHEET WITH SHEETS #20 & 21

BILL OF MATERIAL

BAR NO.	SIZE	LENGTH	SHAPE
h12	#6	32'-9"	—
h13	#6	4'-0"	—
h14	#6	6'-9"	—
h20	#5	10'-9"	—
h21	#5	21'-9"	—
h22	#5	32'-6"	—
h23	#5	4'-3"	—
h24	#5	6'-0"	—
h25	#5	5'-0"	—
h26	#5	5'-9"	—
h27	#4	16'-9"	—
h28	#4	29'-9"	—
h2	#6	9'-9"	U
h4	#6	11'-3"	U
p8	#9	29'-9"	—
p9	#9	32'-6"	—
p10	#9	26'-6"	—
p11	#8	16'-6"	—
p15	#8	13'-0"	—
p21	#7	33'-0"	—
p22	#7	30'-3"	—
p23	#7	29'-9"	—
p24	#7	32'-0"	—
p25	#7	5'-0"	—
s6	#4	9'-5"	□
s7	#4	17'-7"	□
t2	#7	6'-10"	C
u10	#6	10'-9"	U
u12	#6	7'-3"	U
v3	#6	8'-7"	—
v4	#6	8'-7"	—
v5	#5	2'-6"	—
v8	#4	7'-6"	—
v9	#4	6'-0"	—
v10	#4	8'-0"	—
v11	#4	3'-9"	—
w3	#5	3'-8"	—
w4	#5	2'-2"	—
CLASS X CONCRETE CUVDS 997			
REINFORCEMENT BARS LBS. 9,280			
CONCRETE PILES L/N.F.T. 990			
TEST PILES, CONCRETE EACH 1			

EAST ABUTMENT  
RAMP BD  
OVER F.A. ROUTE 194  
PROJECT  
SECTION 201-3HB-2  
WINNEBAGO COUNTY  
STATION 51+80.43

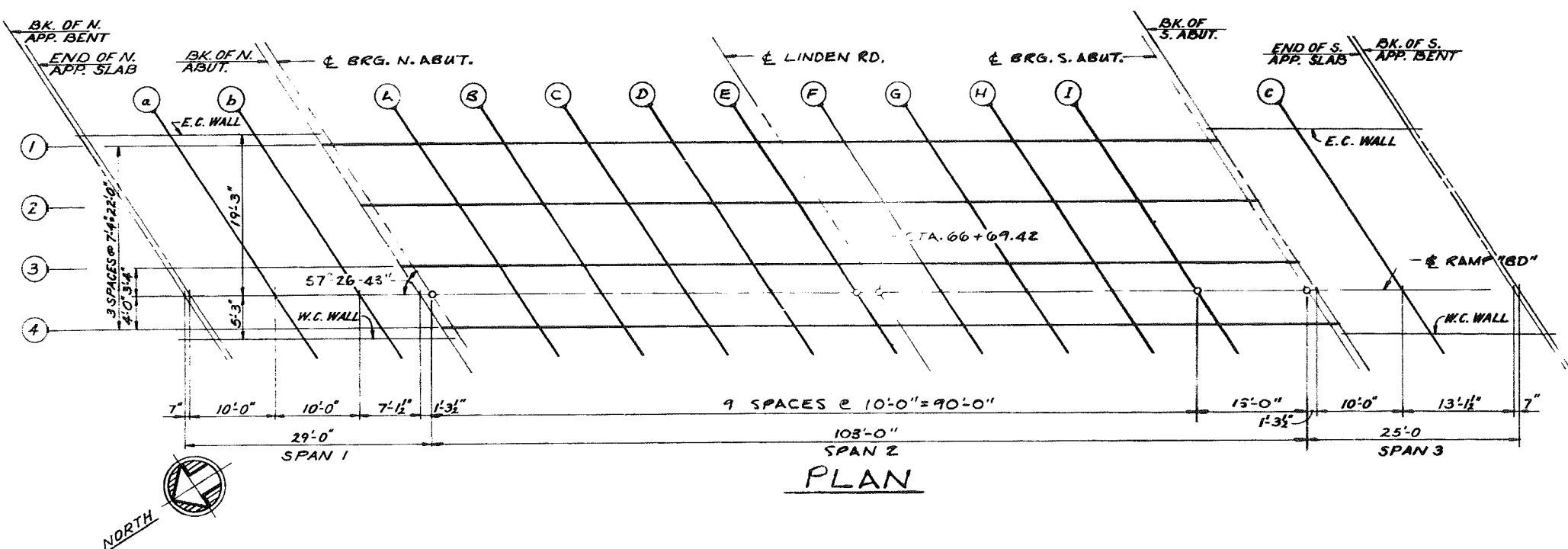
FOR INFORMATION ONLY BAR t2

ALFRED BENESCH & COMPANY  
CONSULTING ENGINEERS  
JOB NO. 1605-K  
233 N. MICHIGAN AVE., CHICAGO, ILLINOIS



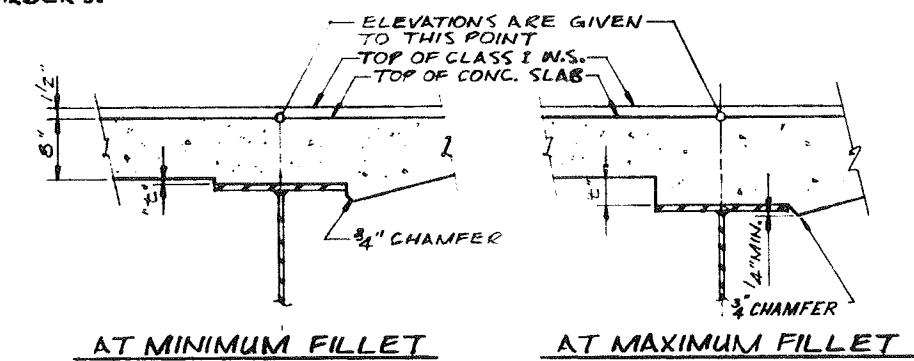




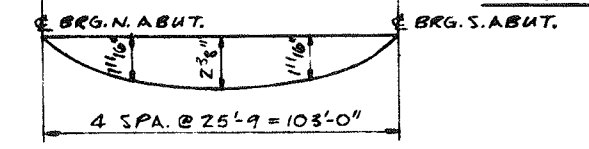


LINE	BEAM OR GIRDER	STATION	OFFSET	THEORETICAL GRADE ELEVATION	ELEVATION ADJUSTED FOR DEAD LOAD DEFLECTION
N ABUT	GIR 1	6606.429	18.000	838.122	838.122
	GIR 2	6611.108	10.670	838.012	838.012
	GIR 3	6615.788	3.340	837.901	837.901
	GIR 4	6620.474	-4.000	837.788	837.788
1A	GIR 1	6616.429	18.000	838.130	838.189
	GIR 2	6621.108	10.670	838.017	838.077
	GIR 3	6625.788	3.340	837.904	837.964
	GIR 4	6630.474	-4.000	837.790	837.869
1B	GIR 1	6626.429	18.000	838.133	838.246
	GIR 2	6631.108	10.670	838.018	838.132
	GIR 3	6635.788	3.340	837.903	838.017
	GIR 4	6640.474	-4.000	837.787	837.900
1C	GIR 1	6636.429	18.000	838.131	838.287
	GIR 2	6641.108	10.670	838.015	838.171
	GIR 3	6645.788	3.340	837.898	838.034
	GIR 4	6650.474	-4.000	837.780	837.936
1D	GIR 1	6646.429	18.000	838.126	838.310
	GIR 2	6651.108	10.670	838.008	838.192
	GIR 3	6655.788	3.340	837.889	838.073
	GIR 4	6660.474	-4.000	837.768	837.952
1E	GIR 1	6656.429	18.000	838.116	838.312
	GIR 2	6661.108	10.670	837.996	838.191
	GIR 3	6665.788	3.340	837.875	838.070
	GIR 4	6670.474	-4.000	837.753	837.948
1F	GIR 1	6666.429	18.000	838.103	838.291
	GIR 2	6671.108	10.670	837.980	838.169
	GIR 3	6675.788	3.340	837.857	838.044
	GIR 4	6680.474	-4.000	837.733	837.922
1G	GIR 1	6676.429	18.000	838.085	838.250
	GIR 2	6681.108	10.670	837.960	838.126
	GIR 3	6685.788	3.340	837.835	838.001
	GIR 4	6690.474	-4.000	837.709	837.875
1H	GIR 1	6686.429	18.000	838.062	838.189
	GIR 2	6691.108	10.670	837.936	838.063
	GIR 3	6695.788	3.340	837.809	837.936
	GIR 4	6700.474	-4.000	837.681	837.808
1J	GIR 1	6696.429	18.000	838.036	838.112
	GIR 2	6701.108	10.670	837.908	837.984
	GIR 3	6705.788	3.340	837.779	837.855
	GIR 4	6710.474	-4.000	837.649	837.725
S ABUT.	GIR 1	6709.429	18.000	837.995	837.995
	GIR 2	6714.108	10.670	837.865	837.865
	GIR 3	6718.788	3.340	837.733	837.733
	GIR 4	6723.474	-4.000	837.601	837.601
BK. N. APP. BENT	E.C. WALL	6576.631	19.250	838.088	838.088
	RAMP BD	6586.920	0.000	837.818	837.818
	W.C. WALL	6592.272	-5.250	837.743	837.743
BK. S. ABUT.	E.C. WALL	6709.921	19.250	838.014	838.014
	RAMP BD	6722.210	0.000	837.868	837.868
	W.C. WALL	6725.562	-5.250	837.573	837.573
END N. APP. SLAB	E.C. WALL	6577.224	19.250	838.097	838.097
	RAMP BD	6589.513	0.000	837.820	837.820
	W.C. WALL	6592.865	-5.250	837.744	837.744
END S. APP. SLAB	E.C. WALL	6719.921	19.250	837.977	837.977
	RAMP BD	6732.210	0.000	837.827	837.827
	W.C. WALL	6735.562	-5.250	837.530	837.530
BK. N. APP. BENT	E.C. WALL	6587.224	19.250	838.117	838.117
	RAMP BD	6599.513	0.000	837.835	837.835
	W.C. WALL	6602.865	-5.250	837.758	837.758
BK. S. APP. BENT	E.C. WALL	6733.631	19.250	837.923	837.923
	RAMP BD	6745.920	0.000	837.568	837.568
	W.C. WALL	6749.272	-5.250	837.467	837.467
BK. N. ABUT.	E.C. WALL	6604.348	19.250	838.140	838.140
	RAMP BD	6616.635	0.000	837.849	837.849
	W.C. WALL	6619.987	-5.250	837.769	837.769

**NOTE:**  
 TO DETERMINE "c": AFTER ALL STRUCTURAL STEEL HAS BEEN ERECTED, ELEVATIONS OF THE GIRDERS SHALL BE TAKEN AT INTERVALS SHOWN THESE ELEVATIONS SUBTRACTED FROM THE GRADE ELEVATIONS ADJUSTED FOR DEAD LOAD DEFLECTION SHOWN ON THIS SHEET MINUS SLAB THICKNESS, EQUALS THE FILLET HEIGHTS "c" ABOVE TOP FLANGE OF THE GIRDERS.



FILLET HEIGHTS



DEAD LOAD DEFLECTION DIAGRAM  
 (INCLUDES WT. OF CONCRETE AND INITIAL SDL ONLY)

**NOTE:**  
 THE ABOVE DEFLECTIONS ARE NOT TO BE USED IN THE FIELD IF THE ENGINEER IS WORKING FROM THE GRADE ELEVATIONS ADJUSTED FOR DEAD LOAD DEFLECTIONS.

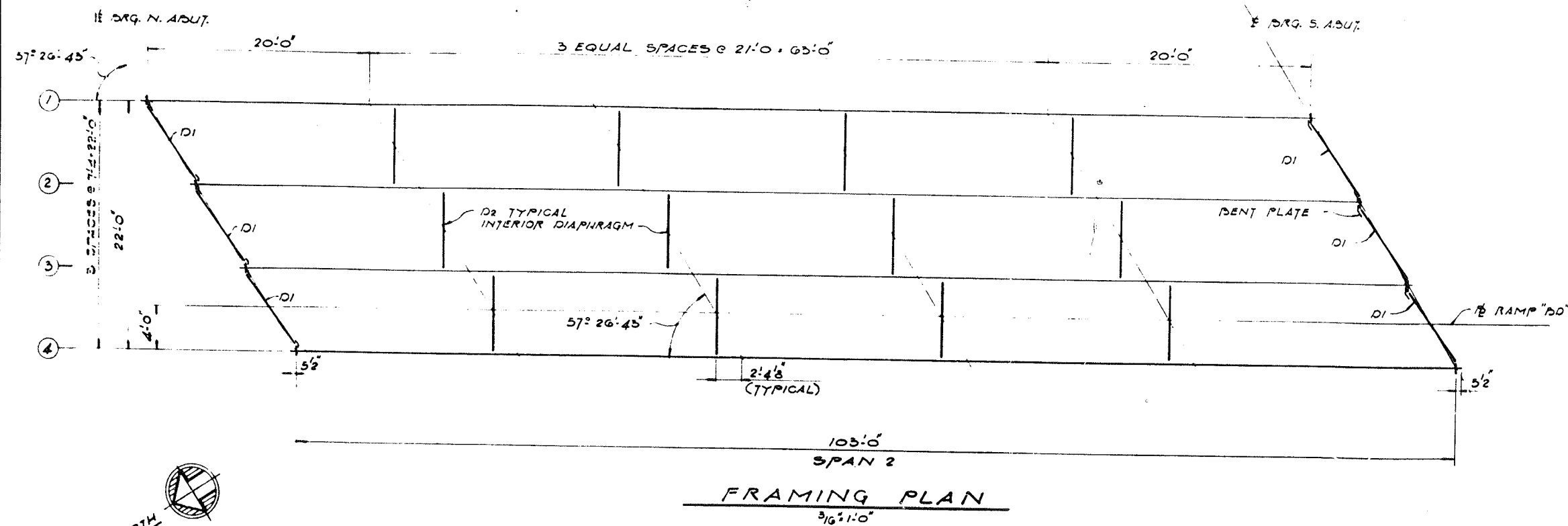
**FOR INFORMATION ONLY**

ALFRED BENESCH & COMPANY  
 CONSULTING ENGINEERS  
 333 N. MICHIGAN AVE. CHICAGO, ILLINOIS

TOP OF SLAB ELEVATIONS  
 RAMP BD  
 OVER LINDEN ROAD  
 PROJECT  
 SECTION 201-3MB-5  
 WINNEBAGO COUNTY  
 STATION 66+69.42

PROJECT	NO.	COUNTY	TOTAL SHEETS	155A
STA.	TO STA.	PROJECT		

SHEET 8 OF 12

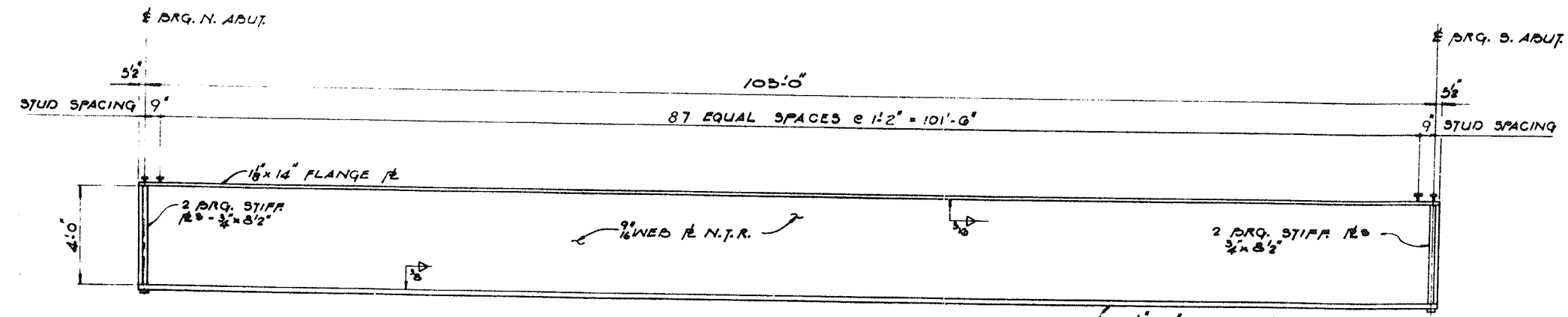


REACTION TABLE

INTERIOR GIRDER REACTION TABLE	
	ABUT.
R <sub>OL</sub> (K)	77.0
R <sub>LL</sub> (K)	53.6
Imp (K)	11.8
R TOTAL (K)	145.0

MOMENT TABLE SYMMETRICAL COMPOSITE . SPAN

INTERIOR GIRDER MOMENT TABLE	
	0.83 MN
I <sub>o</sub> (in <sup>4</sup> )	86872
I <sub>c</sub> (in <sup>4</sup> )	86674
S <sub>x</sub> (in)	1078
S <sub>y</sub> (in)	8817
D.L. (K)	1.009
M <sub>oL</sub> (K)	1338
f <sub>oL</sub> (K)	14.9
S <sub>oL</sub> (in)	0.536
M <sub>oL</sub> (K)	711
M <sub>LL</sub> (K)	1069
M <sub>max</sub> (K)	251
M <sub>min</sub> (K)	1991
M <sub>o</sub> (K)	4.11
f <sub>o</sub> (K)	17.01
V <sub>R</sub> (K)	53.3



GIRDER ELEVATION

NOTES!

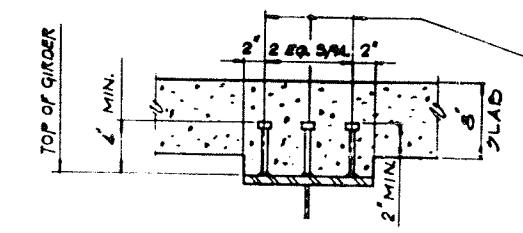
I<sub>o</sub> AND S<sub>o</sub> ARE THE MOMENT OF INERTIA AND SECTION MODULUS OF STEEL SECTION.  
 I<sub>c</sub> AND S<sub>c</sub> ARE THE MOMENT OF INERTIA AND SECTION MODULUS OF THE COMPOSITE SECTION USED IN COMPUTING I<sub>o</sub>.  
 V<sub>R</sub> IS THE MAXIMUM L.L. + IMPACT SHEAR RANGE IN SPAN.

NOTE:  
 N.T.R. DESIGNATES MEMBERS SUBJECT TO THE SUPPLEMENTAL REQUIREMENTS FOR TOUGHNESS.

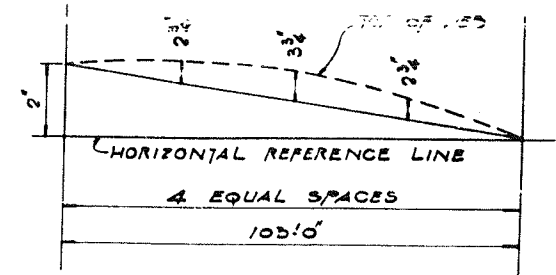
TOP OF WEB ELEVATIONS (UNDEFLECTED GIRDERS - FOR FABRICATION ONLY)

GIRDER LOCATION	1	2	3	4
DRG. N.A.	837.300	837.190	837.079	836.966
DRG. S.A.	837.173	837.043	836.911	836.779

AS REVISED



SHEAR CONNECTOR DETAIL



CAMBER DIAGRAM AND DIMENSIONS (ALL GIRDERS)

FOR INFORMATION ONLY

ALFRED BENESCH & COMPANY  
 CONSULTING ENGINEERS  
 233 N. MICHIGAN AVE. CHICAGO, ILLINOIS

FRAMING PLAN  
 RAMP RD.  
 OVER LINDEN ROAD  
 PROJECT  
 SECTION 201-SHR-3  
 WINNEBAGO COUNTY  
 STATION 86+88.41

As Revised 8-21-80 L.W.