

STATE OF ILLINOIS
 DEPARTMENT OF TRANSPORTATION
 DIVISION OF HIGHWAYS

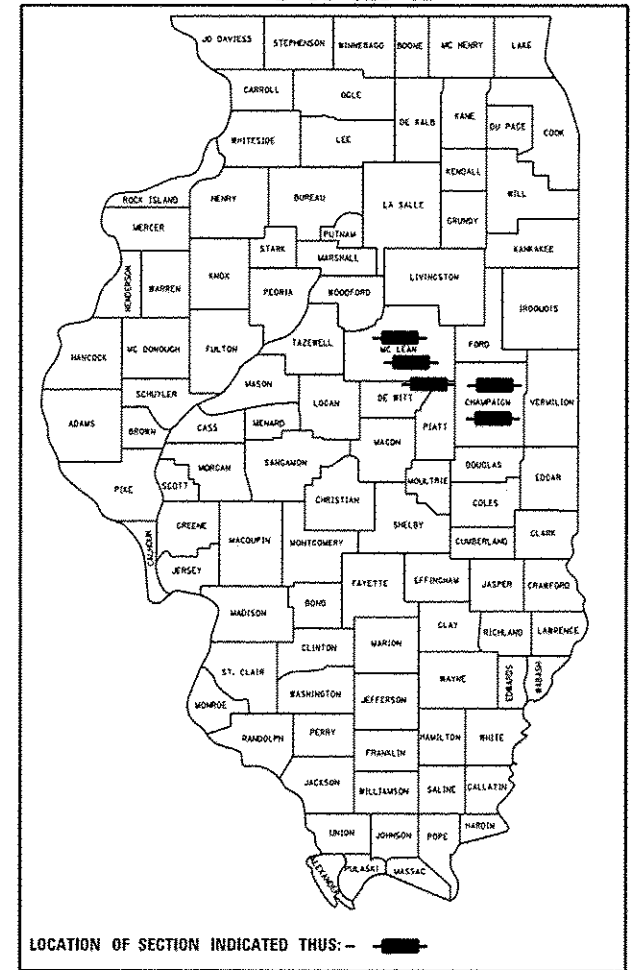
**PROPOSED
 HIGHWAY PLANS**

VARIOUS ROUTES
 SECTION FY2016 BRIDGE DECK SEALING
 VARIOUS DISTRICT WIDE BRIDGE DECK SEALING
 CHAMPAIGN, DEWITT AND MCLEAN COUNTIES

F.A.P. RTE.	SECTION	COUNTY	TOTAL SHEETS	SHEET NO.
*	**	***	23	1
ILLINOIS			CONTRACT NO. 70979	

- * VARIOUS
- ** FY2016 BRIDGE DECK SEALING
- *** CHAMPAIGN, DEWITT AND MCLEAN

D-95-025-12



FOR INDEX OF SHEETS, SEE SHEET NO. 2
 FOR SUMMARY OF QUANTITIES, SEE SHEET NO. 9

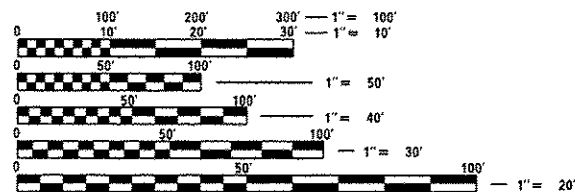
CURRENT ADT	
FAP 840 (PROSPECT AVE.) HIGHEST LOCATION SHOWN CHAMPAIGN COUNTY	
2014 ADT =	30,700
2032 ADT =	37,111
PU & PC =	93.0 %
SU =	3.5%
MU =	2.5%

C-95-025-12

FOR LOCATIONS MAPS IN CHAMPAIGN COUNTY, SEE PAGES 3-5

FOR LOCATIONS MAPS IN DEWITT COUNTY, SEE PAGE 6

FOR LOCATIONS MAPS IN MCLEAN COUNTY, SEE PAGES 6-7



FULL SIZE PLANS HAVE BEEN PREPARED USING STANDARD ENGINEERING SCALES. REDUCED SIZED PLANS WILL NOT CONFORM TO STANDARD SCALES. IN MAKING MEASUREMENTS ON REDUCED PLANS, THE ABOVE SCALES MAY BE USED.

J.U.L.I.E.
 JOINT UTILITY LOCATION INFORMATION FOR EXCAVATION
 1-800-892-0123
 OR 811

PROJECT ENGINEER TIM BRANDENBURG
 DESIGNER TIM BRANDENBURG
 DISTRICT 5 PHONE NUMBER: (217) 465-4181
 CONTRACT NO. 70979

GROSS LENGTH = x.xx FT. = x.xxx MILE
 NET LENGTH = x.xx FT. = x.xxx MILE

STATE OF ILLINOIS
 DEPARTMENT OF TRANSPORTATION
 DIVISION OF HIGHWAYS

SUBMITTED NOVEMBER 17, 2015
Kenneth A. Gannett
 DEPUTY DIRECTOR OF HIGHWAYS, REGION ENGINEER CIE

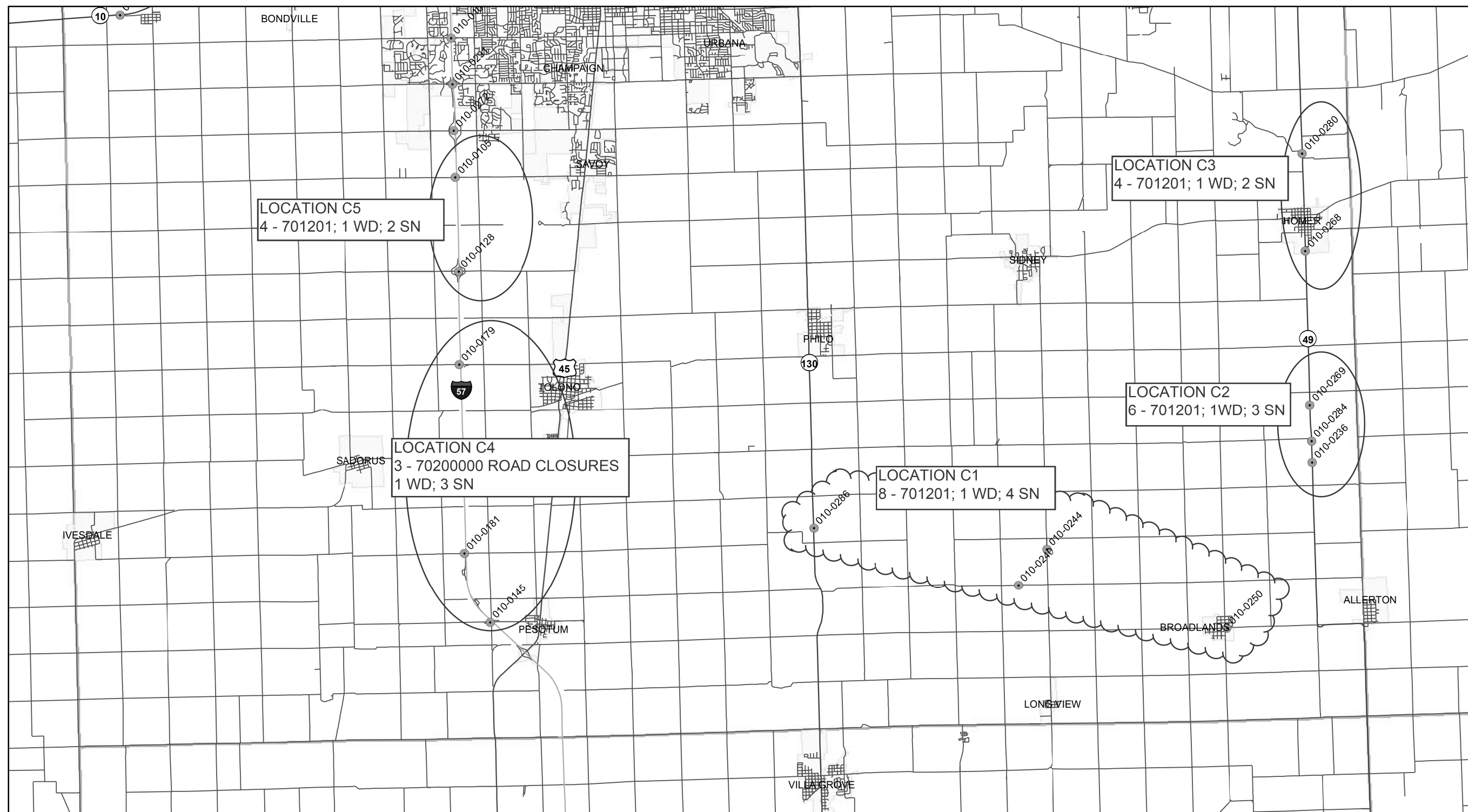
Jan 29, 2016
Muhammad Adis, P.E.
 ENGINEER OF DESIGN AND ENVIRONMENT

Jan 29, 2016
Omer Osman, P.E.
 DIRECTOR OF HIGHWAYS, CHIEF ENGINEER

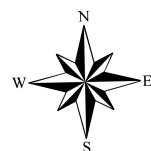
**PRINTED BY THE AUTHORITY
 OF THE STATE OF ILLINOIS**

FY 2016 Bridge Deck Sealing; CN 70979

Champaign County - South



April/15/2015



1:125000

*VARIOUS **FY 2016 BRIDGE DECK SEALING ***CHAMPAIGN, DEWITT AND MCLEAN

FILE NAME =	USER NAME = brandenburgtj	DESIGNED - TJB	REVISED -
p:\1\084EBID\INTEG\illinois.gov\PWIDOT\Documents\IDOT Offices\District 5\Projects\0579\Drawings\Hydraulics\0570979-sht-locat			REVISED -
\$MODELNAME\$	PLOT SCALE = 40.0000' / in.	CHECKED -	REVISED -
	PLOT DATE = 11/16/2015	DATE - 4/20/2015	REVISED -

STATE OF ILLINOIS
DEPARTMENT OF TRANSPORTATION

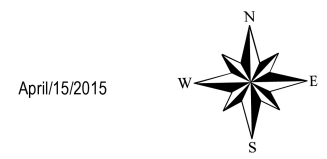
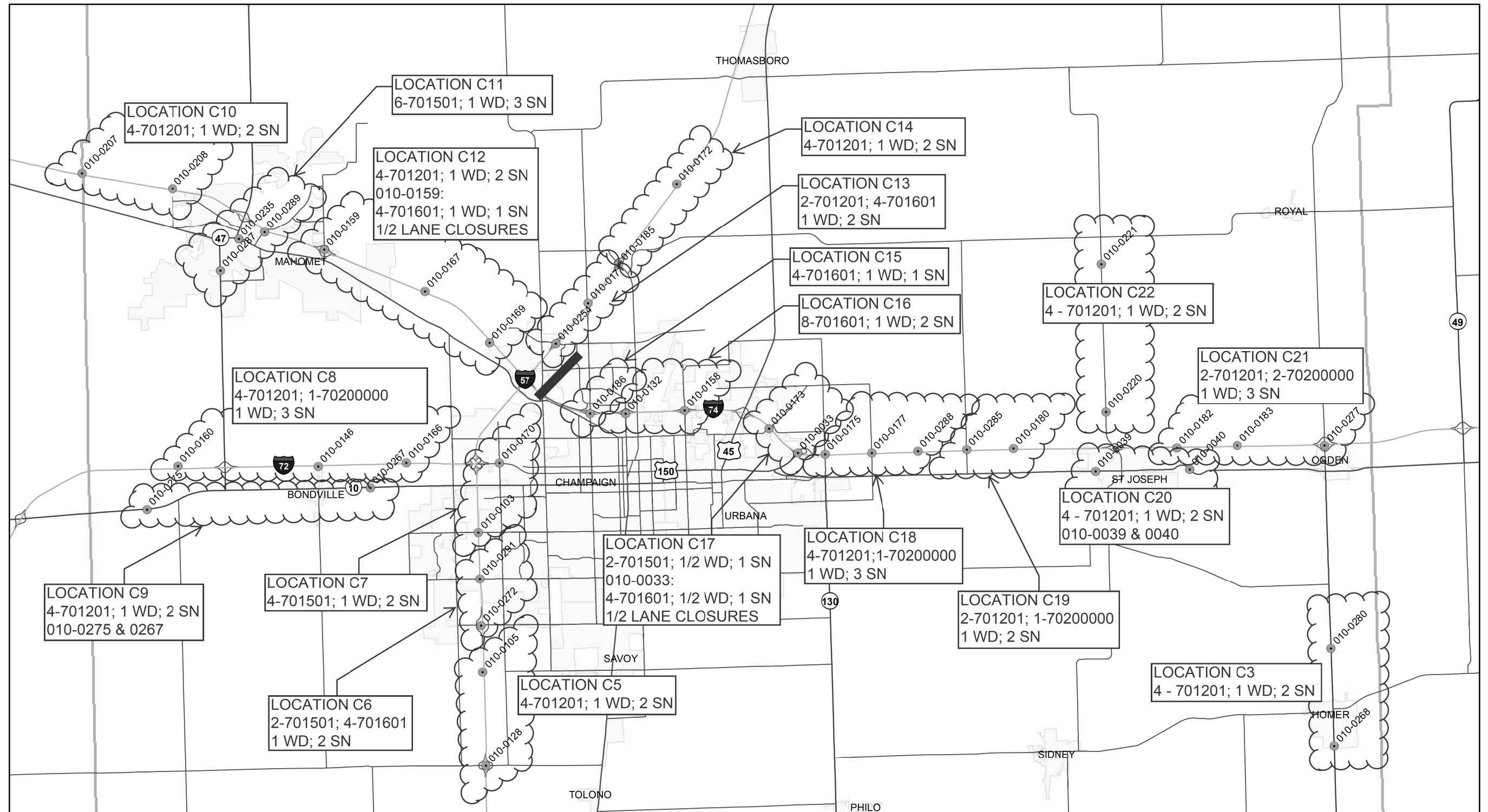
LOCATION MAP
CHAMPAIGN - SOUTH

SCALE: SHEET 1 OF 1 SHEETS STA. TO STA.

F.A.P. RTE.	SECTION	COUNTY	TOTAL SHEETS	SHEET NO.
*	**	***	23	3
CONTRACT NO. 70979				
ILLINOIS FED. AID PROJECT				

FY 2016 Bridge Deck Sealing; CN 70979

Champaign County - Central



April/15/2015

1:192038

FILE NAME =	USER NAME = brandenburgtj	DESIGNED - TJB	REVISED -
pw:\IL\084EBIDINTEG\illinois.gov\PWIDOT\Documents\DOT Offices\District 5\Projects\0579\Drawings\Hydraulics\0579979-sht-locat		DRAWN	REVISED -
MODELNAME	PLOT SCALE = 48.0000' / in.	CHECKED -	REVISED -
	PLOT DATE = 11/16/2015	DATE - 4/20/2015	REVISED -

**STATE OF ILLINOIS
DEPARTMENT OF TRANSPORTATION**

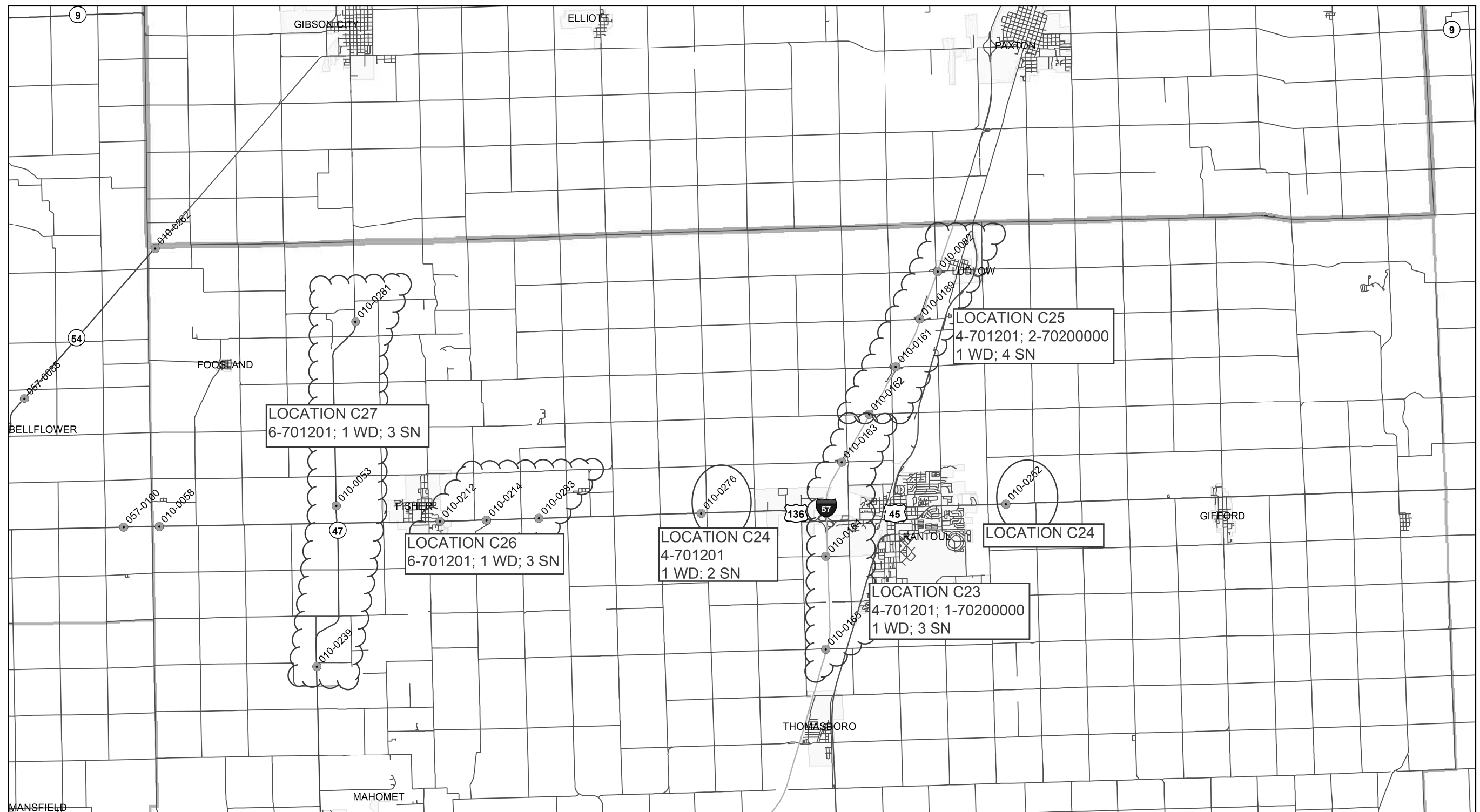
**LOCATION MAP
CHAMPAIGN - CENTRAL**

SCALE: SHEET 1 OF 1 SHEETS STA. TO STA.

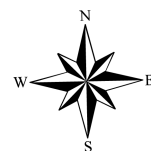
*VARIOUS **FY 2016 BRIDGE DECK SEALING ***CHAMPAIGN, DEWITT AND MCLEAN			
F.A.P. RTE.	SECTION	COUNTY	TOTAL SHEETS
.	**	***	23
			SHEET NO. 4
CONTRACT NO. 70979			
ILLINOIS FED. AID PROJECT			

FY 2016 Bridge Deck Sealing; CN 70979

Champaign County - North



April/15/2015



1:125000

FILE NAME =	USER NAME = brandenburgtj	DESIGNED - TJB	REVISED -
pw:\IL\084EBID\INTEG\illinois.gov\PIDOT\Documents\DOT Offices\District 5\Projects\0579\Drawings\Hydraulics\057979-sht-locat			REVISED -
	PLOT SCALE = 48.0000' / in.	CHECKED -	REVISED -
\$MODELNAME\$	PLOT DATE = 11/16/2015	DATE - 4/20/2015	REVISED -

STATE OF ILLINOIS
DEPARTMENT OF TRANSPORTATION

LOCATION MAP
CHAMPAIGN - NORTH

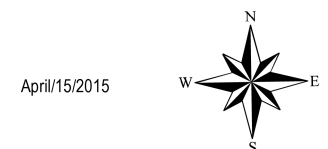
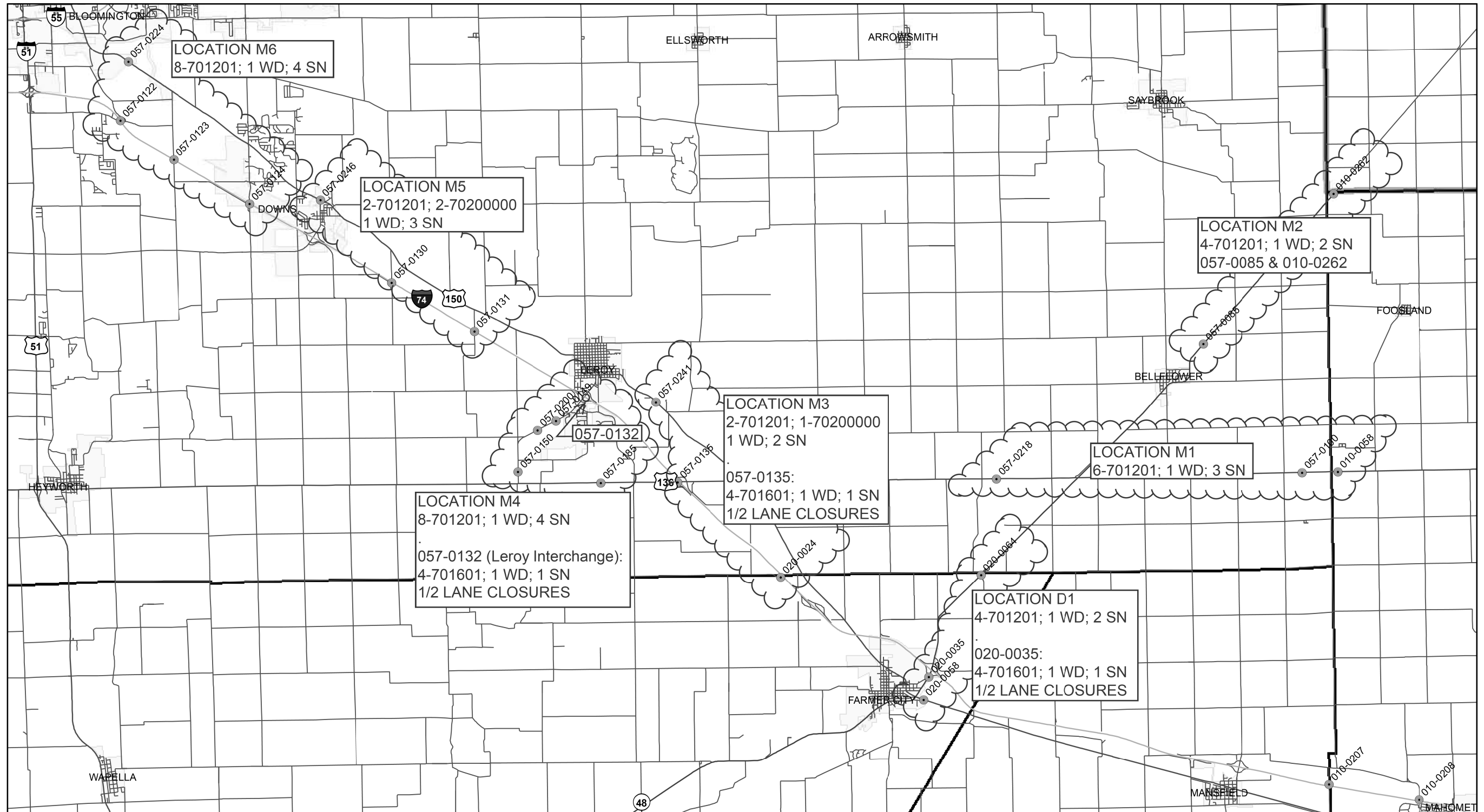
SCALE: SHEET 1 OF 1 SHEETS STA. TO STA.

•VARIOUS •FY 2016 BRIDGE DECK SEALING ••CHAMPAIGN, DEWITT AND MCLEAN

F.A.P. RTE.	SECTION	COUNTY	TOTAL SHEETS	SHEET NO.
•	••	•••	23	5
CONTRACT NO. 70979				
ILLINOIS FED. AID PROJECT				

FY 2016 Bridge Deck Sealing; CN 70979

Mclean & Dewitt Counties



April/15/2015

1:132086

FILE NAME =	USER NAME = brandenburgtj	DESIGNED - TJB	REVISED -
p:\1\084EBIDINTEG\illinois.gov\PIWIDOT\Documents\DOT Offices\District 5\Projects\0579\Drawings\Hydraulics\057979-sht-locat			REVISED -
\$MODELNAME\$	PLOT SCALE = 40.0000' / in.	CHECKED -	REVISED -
	PLOT DATE = 11/16/2015	DATE - 4/20/2015	REVISED -

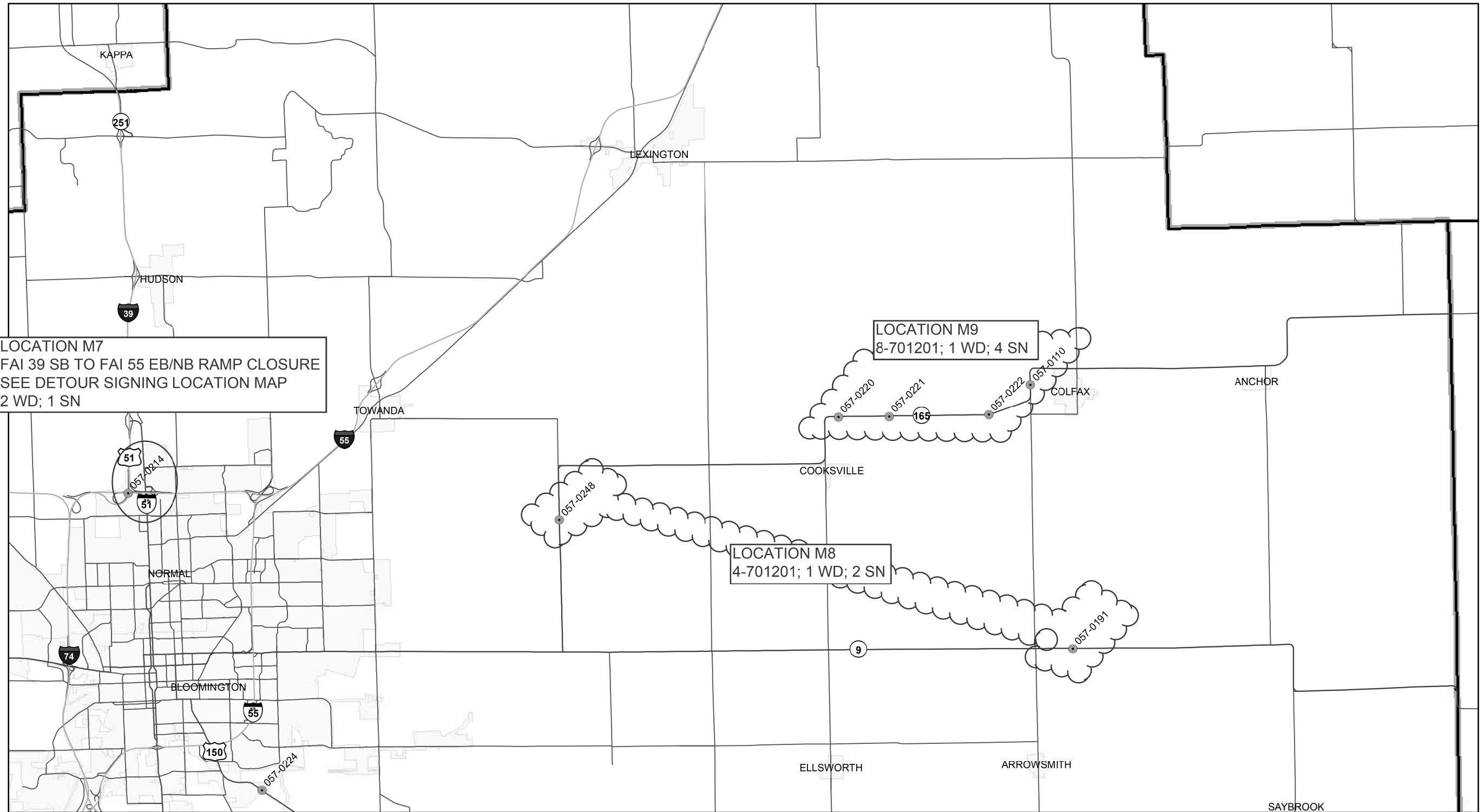
**STATE OF ILLINOIS
DEPARTMENT OF TRANSPORTATION**

LOCATION MAP MCLEAN & DEWITT			
SCALE:	SHEET 1	OF 1 SHEETS	STA. TO STA.

*VARIOUS **FY 2016 BRIDGE DECK SEALING ***CHAMPAIGN, DEWITT AND MCLEAN					
F.A.P. RTE.	SECTION	COUNTY	TOTAL SHEETS	SHEET NO.	
.	23	6	
CONTRACT NO. 70979					
ILLINOIS FED. AID PROJECT					

FY 2016 Bridge Deck Sealing; CN 70979

Mclean County - Central



LOCATION M7
FAI 39 SB TO FAI 55 EB/NB RAMP CLOSURE
SEE DETOUR SIGNING LOCATION MAP
2 WD; 1 SN

LOCATION M9
8-701201; 1 WD; 4 SN

LOCATION M8
4-701201; 1 WD; 2 SN

April/15/2015



1:125000

•VARIOUS •FY 2016 BRIDGE DECK SEALING •••CHAMPAIGN, DEWITT AND MCLEAN

FILE NAME =	USER NAME = brandenburgtj	DESIGNED - TJB	REVISED -
pw:\11\084EBIDINTEG.illinois.gov\PWIDOT\Documents\DOT Offices\District 5\Projects\0579\Drawings\Hydraulics\0570979-sht-locat			REVISED -
MODELNAME	PLOT SCALE = 40.0000 ' / in.	CHECKED -	REVISED -
	PLOT DATE = 11/16/2015	DATE - 4/20/2015	REVISED -

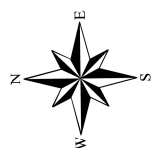
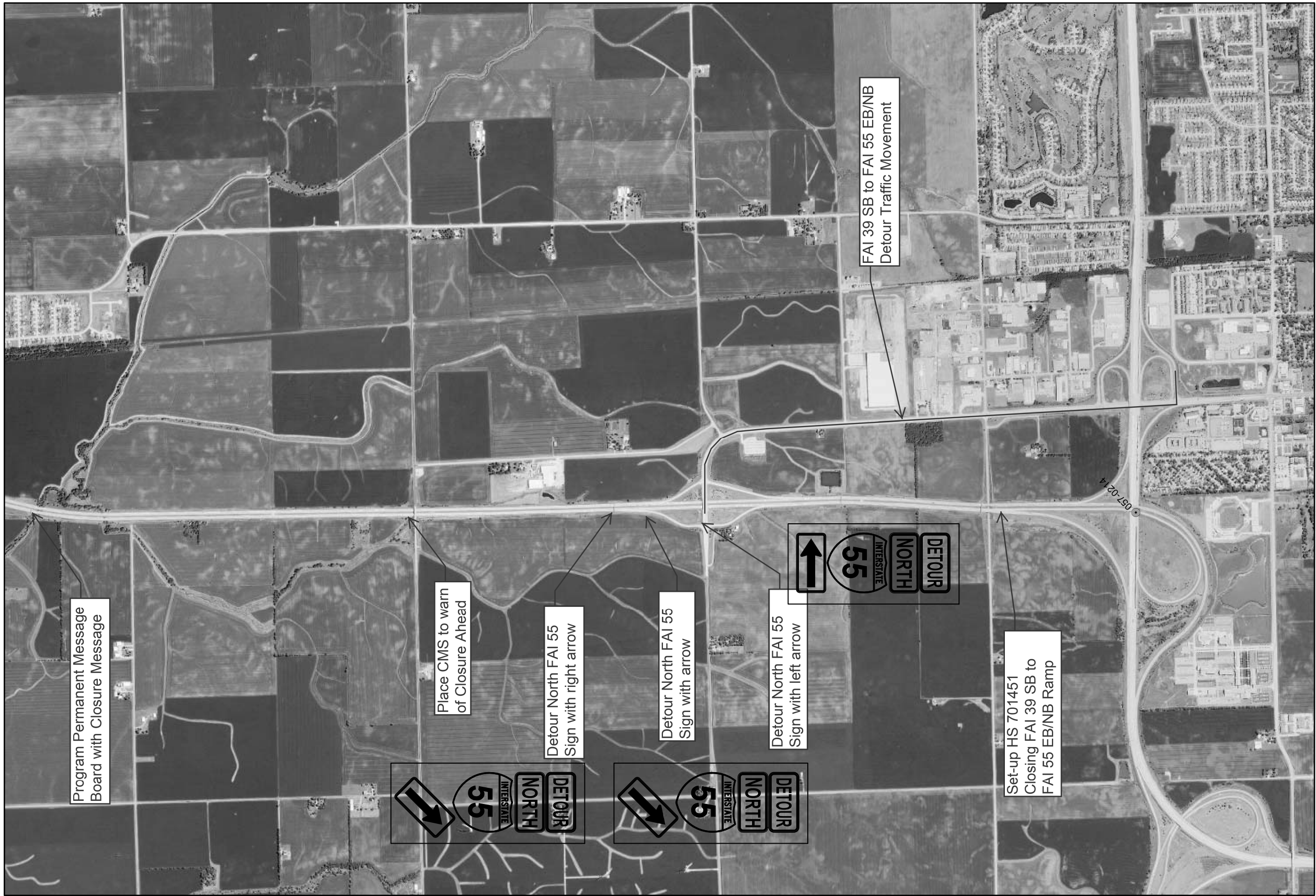
STATE OF ILLINOIS
DEPARTMENT OF TRANSPORTATION

LOCATION MAP
MCLEAN - CENTRAL

SCALE: SHEET 1 OF 1 SHEETS STA. TO STA.

F.A.P. RTE.	SECTION	COUNTY	TOTAL SHEETS	SHEET NO.
•	••	•••	23	7
CONTRACT NO. 70979				
ILLINOIS FED. AID PROJECT				

FY 2016 Bridge Deck Sealing; CN 70979 FAI 39 SB to FAI 55 EB Detour Signing



1:21832

April 20/2015

FILE NAME =	USER NAME = brändenburgtj	DESIGNED - TJB	REVISED -
p:\11\084EBIDINTEG.11\inois.gov\PI\DOT\Documents\DOT Offices\District 5\Projects\0579\DRAWING>Data\Hydraulics\0570979-sht-locat			REVISED -
\$MODELNAME\$	PLOT SCALE = 40.0000 ' / in.	CHECKED -	REVISED -
	PLOT DATE = 11/16/2015	DATE - 4/20/2015	REVISED -

STATE OF ILLINOIS
DEPARTMENT OF TRANSPORTATION

LOCATION MAP
FAI 39 SB TO FAI 55 EB DETOUR SIGNING

SCALE: SHEET 1 OF 1 SHEETS STA. TO STA.

*VARIOUS **FY 2016 BRIDGE DECK SEALING ***CHAMPAIGN, DEWITT AND MCLEAN

F.A.P. RTE.	SECTION	COUNTY	TOTAL SHEETS	SHEET NO.
.	23	8
CONTRACT NO. 70979				
ILLINOIS FED. AID PROJECT				

SUMMARY OF QUANTITIES

LOCATION OF WORK:	VARIOUS ROUTES					
	SECTION FY 2016 BRIDGE DECK SEALING					
	MULTI-LANE INTERSTATE VARIOUS, URBAN SECTIONS (TWO AND FOUR LANES) AND TWO-LANE HIGHWAYS					
FUNDING BREAKOUT:	100% STATE					
	BRIDGE PREVENTIVE MAINTENANCE					
CONSTRUCTION TYPE CODE:	0014					
	CHAMPAIGN COUNTY		DEWITT COUNTY		MCLEAN COUNTY	
	RURAL	URBAN	RURAL	URBAN	RURAL	URBAN
	TOTAL					

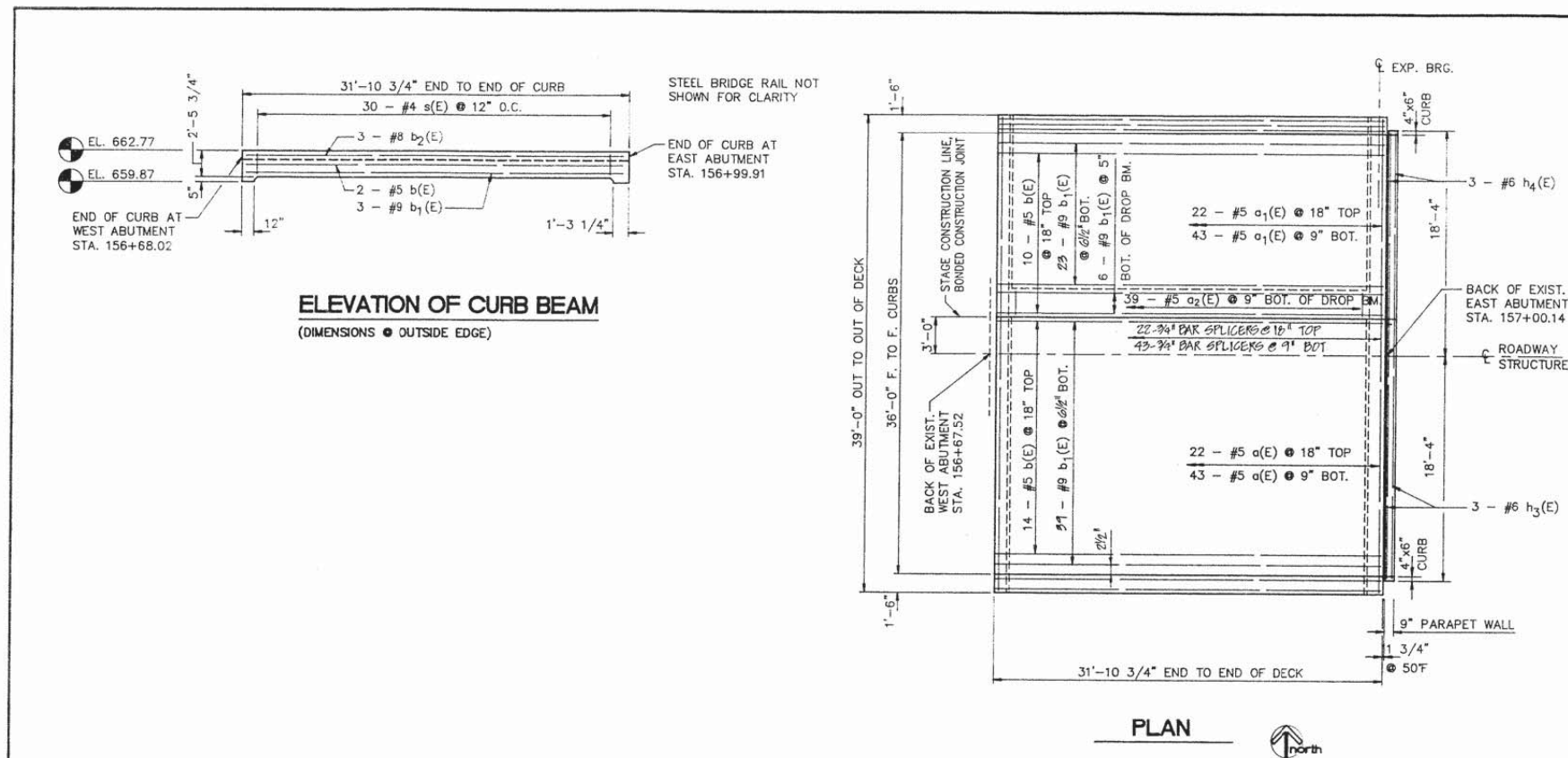
CODE NO.	DESCRIPTION	UNIT	TOTAL QUANTITY	CHAMPAIGN COUNTY RURAL	CHAMPAIGN COUNTY URBAN	DEWITT COUNTY RURAL	DEWITT COUNTY URBAN	MCLEAN COUNTY RURAL	MCLEAN COUNTY URBAN
67100100	MOBILIZATION	L SUM	1.0	0.3	0.4	0.1	0.0	0.1	0.1
70100450	TRAFFIC CONTROL AND PROTECTION, STANDARD 701201	L SUM	1.0	0.4	0.1	0.1	0.0	0.3	0.1
70100820	TRAFFIC CONTROL AND PROTECTION, STANDARD 701451	L SUM	1.0	0.0	0.0	0.0	0.0	0.0	1.0
70102620	TRAFFIC CONTROL AND PROTECTION, STANDARD 701501	L SUM	1.0	0.0	1.0	0.0	0.0	0.0	0.0
70102630	TRAFFIC CONTROL AND PROTECTION, STANDARD 701601	L SUM	1.0	0.0	0.6	0.1	0.0	0.3	0.0
X5870015	BRIDGE DECK CONCRETE SEALER	SQ. FT	931,720.0	290,040.0	412,935.0	38,615.0	0.0	131,256.0	58,874.0
X7015005	CHANGEABLE MESSAGE SIGN	CAL DA	28.0	0.0	0.0	0.0	0.0	0.0	28.0
Z0016702	DETOUR SIGNING	L SUM	1.0	0.0	0.0	0.0	0.0	0.0	1.0

NO SPECIALTY ITEMS

*VARIOUS
**FY 2016 BRIDGE DECK SEALING
***CHAMPAIGN, DEWITT AND MCLEAN

FILE NAME *	USER NAME = brandenburg	DESIGNED - TJB	REVISED -	STATE OF ILLINOIS DEPARTMENT OF TRANSPORTATION	SUMMARY OF QUANTITIES	F.A.P. RTE.	SECTION	COUNTY	TOTAL SHEETS	SHEET NO.	
g:\N\084810\INTEG\Illinois.gov\PI\DOT\Documents\DOT Offices\District 5\Projects\DS7\DRAM\Drawings\Hydraulics\057019-shs-500.dwg	DRAM	REVISION	REVISION			.	**	***	23	9	
PLOT SCALE = 40.0000' = 1" in.	CHECKED -	REVISION	REVISION			SCALE: SHEET 1 OF 1 SHEETS STA. TO STA.					
PLOT DATE = 11/16/2015	DATE - 4/20/2015	REVISION	REVISION			CONTRACT NO. 70979 ILLINOIS FED. AID PROJECT					

F.A.P. RTE.	SECTION	COUNTY	TOTAL SHEETS	SHEET NO.
79	143 BR-3	DOUGLAS	19	13
FHWA. REG.		ILLINOIS	PROJECT	

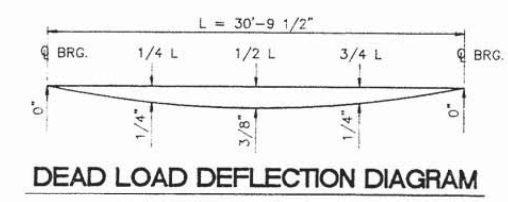
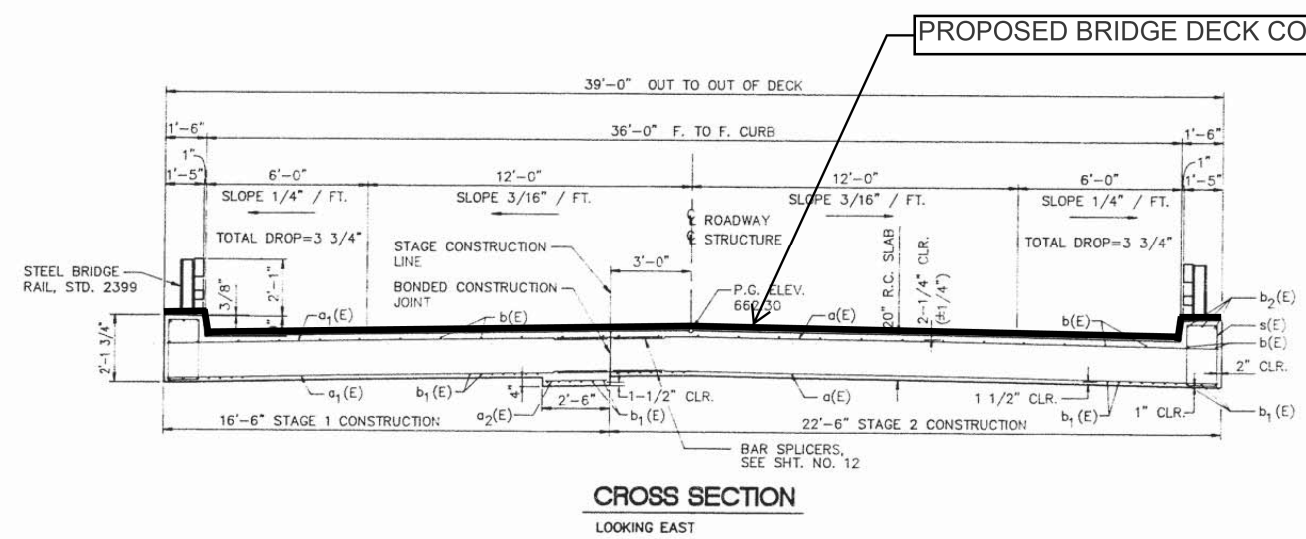


BILL OF MATERIALS SUPERSTRUCTURE

BAR	SIZE	NO. REQ'D	LENGTH	SHAPE
a(E)	#5	67	22'-2"	—
a1(E)	#5	67	16'-2"	—
a2(E)	#5	39	2'-2"	—
a3(E)	#6	6	22'-2"	—
a4(E)	#6	6	16'-2"	—
b(E)	#5	28	31'-7"	—
b1(E)	#9	74	31'-7"	—
b2(E)	#8	6	31'-7"	—
h3(E)	#6	3	21'-0"	—
h4(E)	#6	3	15'-0"	—
s(E)	#4	60	6'-5"	□
s1(E)	#4	42	6'-1"	□
s2(E)	#4	42	5'-2"	□

ITEM	UNIT	QUANTITY
PREFORMED JOINT SEAL 2-1/2"	LIN. FT.	39
CLASS "X" CONCRETE SUPERSTRUCTURE	CU. YD.	84.0
PROTECTIVE COAT	SQ. YD.	22
ELASTOMERIC BEARING ASSEMBLY TYPE I	EACH	7
FURNISHING AND ERECTING STRUCTURAL STEEL	POUND	1822
REINFORCEMENT BARS, EPOXY COATED	POUND	18,220

REINFORCEMENT BARS DESIGNATED (E) SHALL BE EPOXY COATED. SEE SHT. NO. 14 FOR BAR BENDING DETAILS.
 SEE SHT. NO. 17 FOR ADDITIONAL PARAPET WALL DETAILS.



SUPERSTRUCTURE

U.S. 36 over Dry Fork Creek
 F.A.P. RTE. 79 Section 143 BR-3
 Douglas County
 Sta. 156+84
 Structure Number 021-0017

Drawn **EWING**
 Date **4/30/99**
 REV. **B/90**

Project No.
16169002

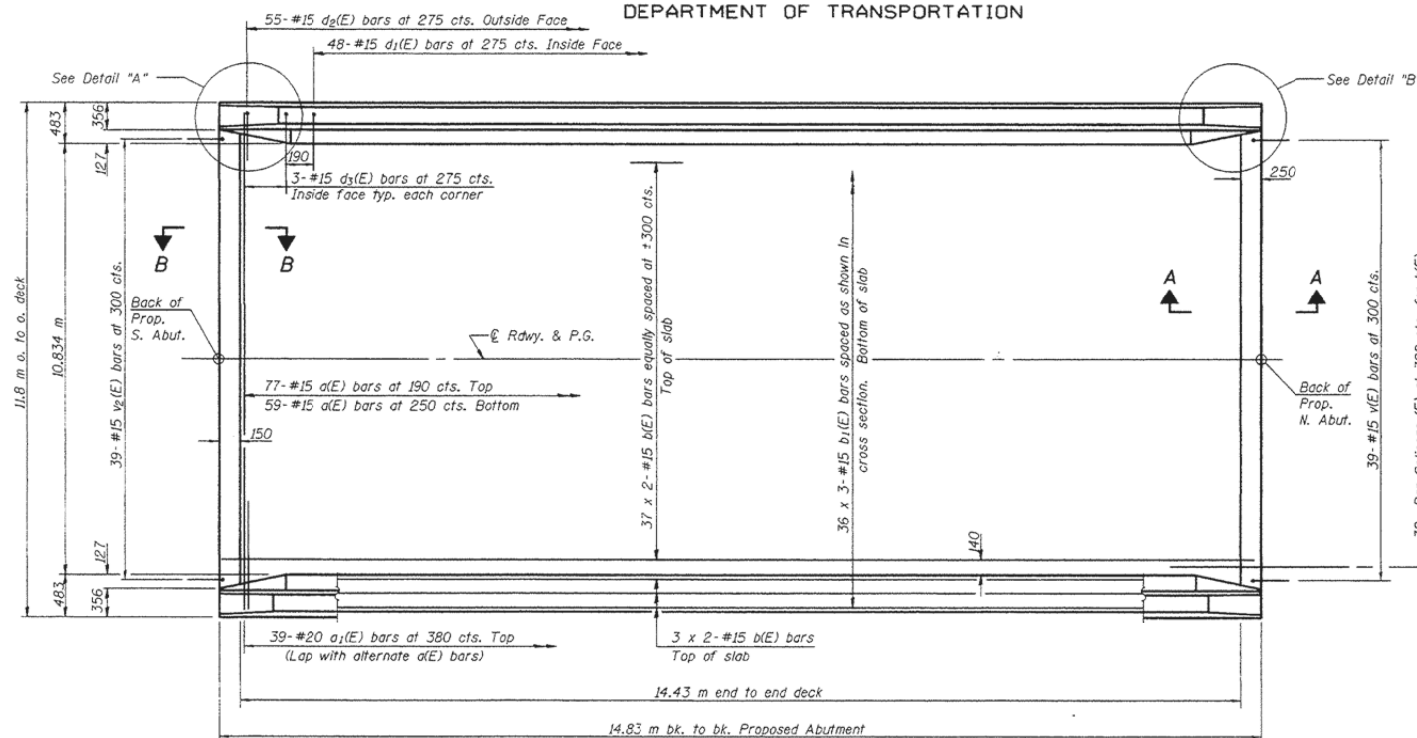
UPCHURCH AND ASSOCIATES
 engineers architects surveyors
 MATTOON, IL. 235-3177

REV 10-19-90 BY HLC CHANGED REINFORCEMENT BARS, EPOXY COATED FROM 15,208 TO 18,220 POUNDS

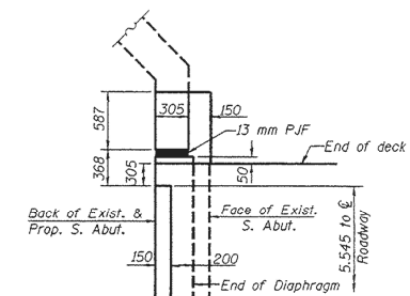
• VARIOUS
 •• FY 2016 BRIDGE DECK SEALING
 ••• CHAMPAIGN, DEWITT AND MCLEAN

STATE OF ILLINOIS
DEPARTMENT OF TRANSPORTATION

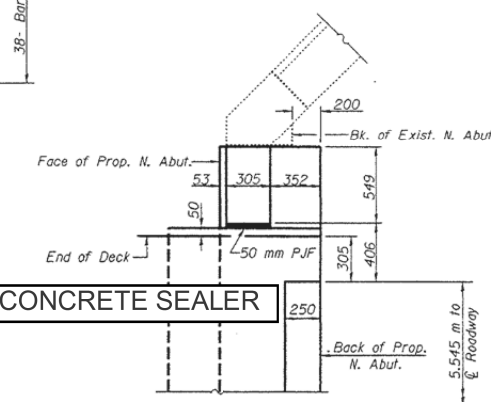
ROUTE NO.	SECTION	COUNTY	TOTAL SHEETS	SHEET NO.
F.A.S. 1671	SEC. 22BR-1	DOUGLAS	13	11
FED. AID PROJ. NO. 7				ILLINOIS PROJECT NO.
				90948



PLAN

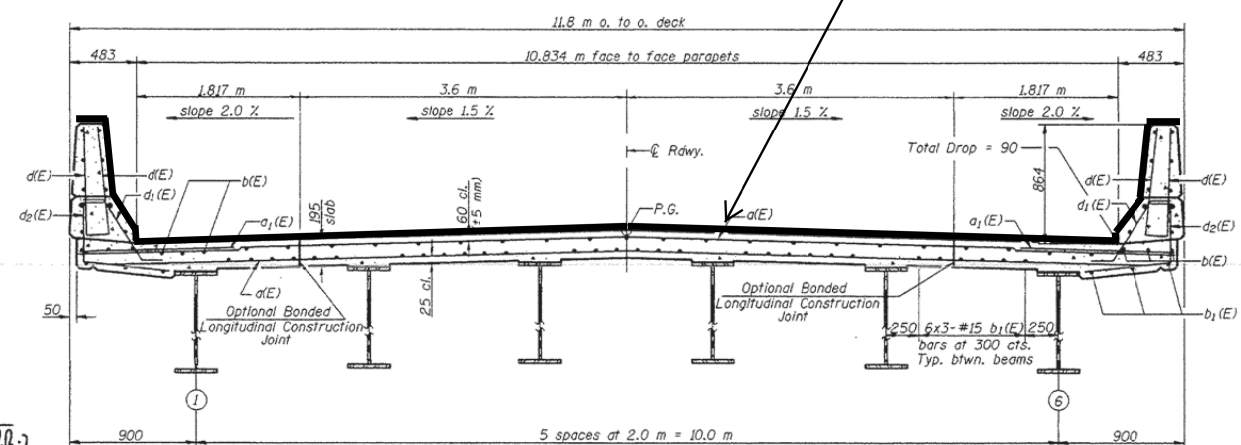


DETAIL "A"
Parapet and Approach not shown.



DETAIL "B"
Parapet and Approach not shown.

PROPOSED BRIDGE DECK CONCRETE SEALER



TYPICAL SECTION; TWO-LANE TWO-WAY WITH PARAPET
CROSS SECTION
(Looking North)

MIN. BAR LAPS
#15 bars = 640

Notes: See Sheet 4 of 13 for superstructure details and Bill of Material.
Reinforcement bars designated (E) shall be epoxy coated.
Bars indicated thus 1 x 3-#15 etc. indicates 1 line of bars with 3 lengths per line.
See Sheet 4 of 13 for parapet reinforcement.
All dimensions are in millimeters (mm) except as noted.
See sheet 12 of 13 for bar splicer details.

SUPERSTRUCTURE
F.A.S. RTE. 1671 SEC. 22BR-1
DOUGLAS COUNTY
STATION 22+618.644
STRUCTURE NO. 021-0011

DESIGNED	Jonas H. Pefty	January 30	2014
CHECKED	Mark D. Shaffer	EXAMINED	Thomas J. Demaree
DRAWN	R. Sommer	PASSED	Ralph E. Anderson
CHECKED	J.D.P./M.D.S.	ENGINEER OF BRIDGES AND STRUCTURES	

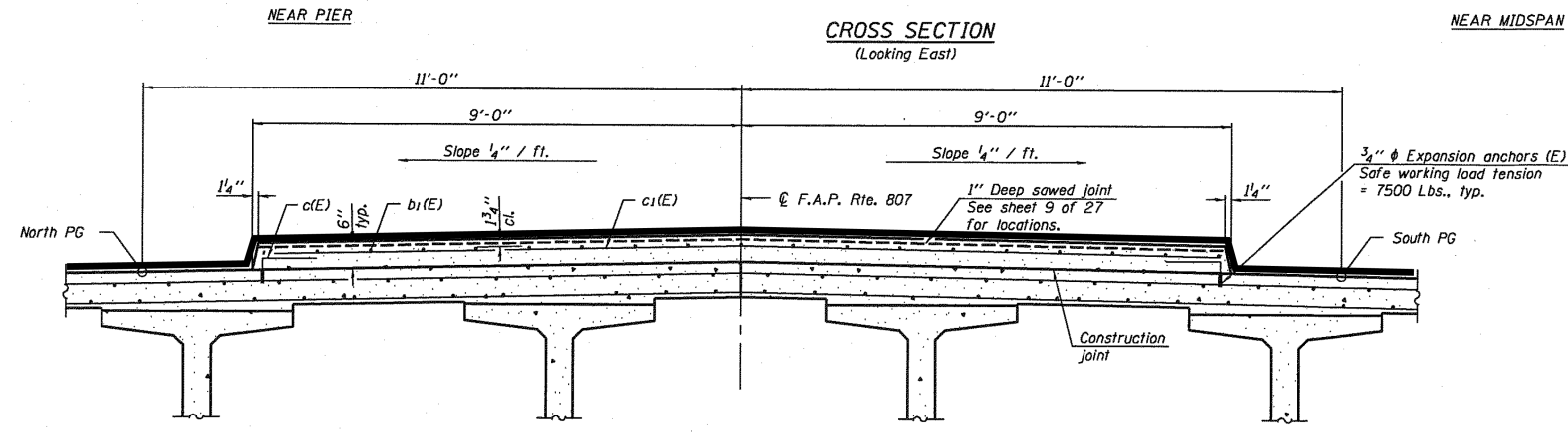
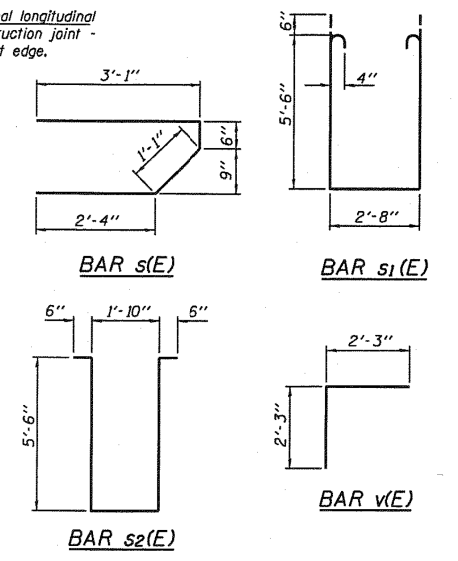
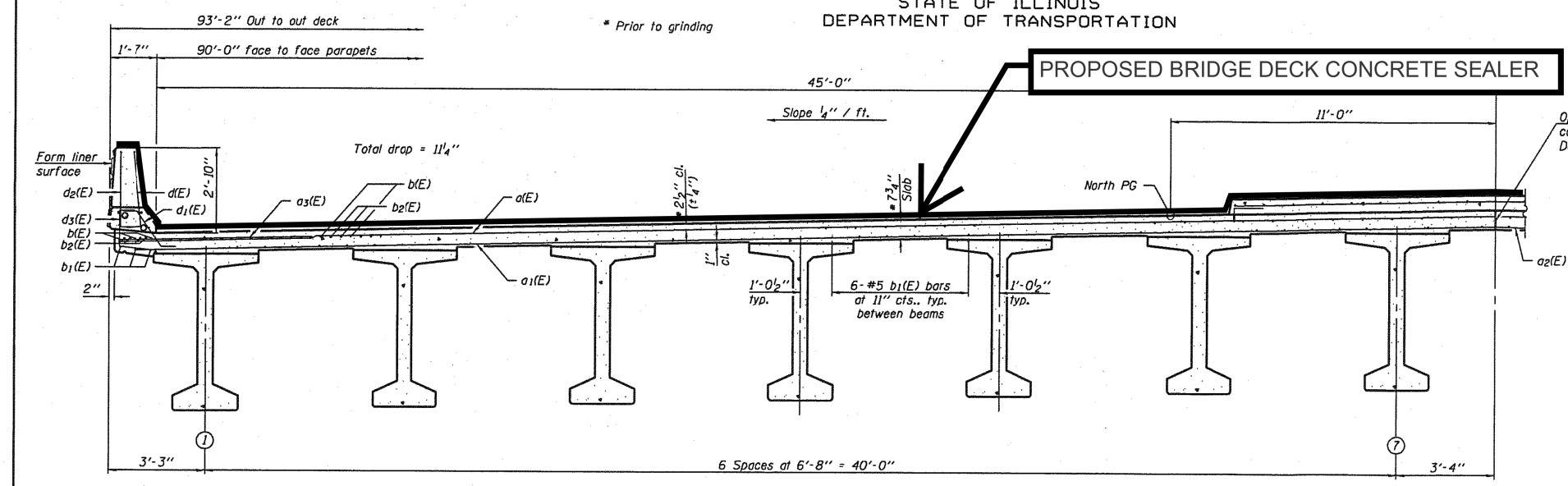
FILE NAME =	USER NAME = brandenburgj	DESIGNED - TJB	REVISED -	STATE OF ILLINOIS DEPARTMENT OF TRANSPORTATION	TYPICAL SECTION TWO-LANE TWO-WAY WITH PARAPET	F.A.P. RTE.	SECTION	COUNTY	TOTAL SHEETS	SHEET NO.
pw:\11084EBIDINTEG.illinois.gov\PIWIDOT\Documents\DOT Offices\District 5\Projects\0579\Drawings\Hydraulics\057979-shr-typical	DESIGNED -	REVISED -	•			••	•••	23	11	
\$MODELNAME\$	PLOT SCALE = 40.0000' / in.	CHECKED -	REVISED -			CONTRACT NO. 70979				
	PLOT DATE = 11/16/2015	DATE - 4/21/2015	REVISED -	SCALE:	SHEET 2 OF 7 SHEETS	STA. TO STA.	ILLINOIS FED. AID PROJECT			

•VARIOUS
••FY 2016 BRIDGE DECK SEALING
•••CHAMPAIGN, DEWITT AND MCLEAN

STATE OF ILLINOIS
DEPARTMENT OF TRANSPORTATION

ROUTE NO.	SECTION	COUNTY	SHEETS	SHEET NO.
F.A.I. 57	10-32HB-3,K	CHAMPAIGN	352	119
FED. ROAD DIST. NO. 7	ILLINOIS	FED. AID PROJECT		27 SHEETS

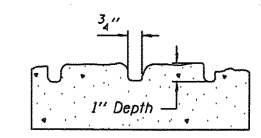
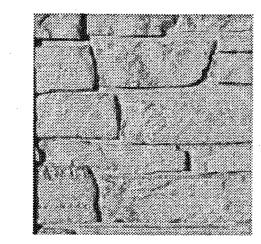
Contract #90758



TYPICAL SECTION WITH MEDIAN

SECTION THRU MEDIAN
(Looking East)

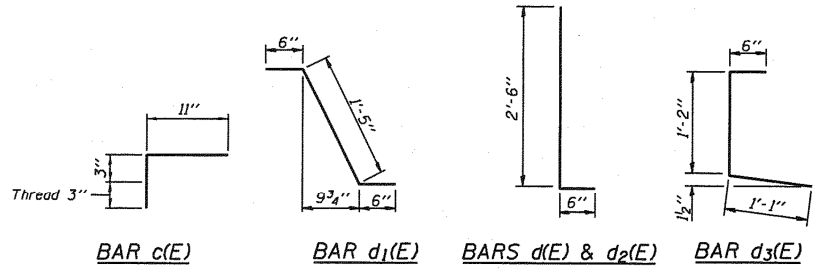
Notes:
See sheet 11 of 27 for additional superstructure details and Bill of Material.
For diaphragm details, see sheets 12 and 13 of 27.
Reinforcement bars designated (E) shall be epoxy coated.
Bars indicated thus 20 x 3-#5 etc. indicates 20 lines of bars with 3 lengths per line.
See sheet 11 of 27 for parapet reinforcement.
Limestone Form Liner Textured Surface to be used on outside face of parapet. Utilize Teton Dry Stack (Scott system #189) or equivalent.
The depth of relief of the Form Liner Textured Surface is limited to 1". The relief should not compromise the reinforcement clearance in the parapet.
Cost of expansion anchors (E) included in the cost of Reinforcement Bars, Epoxy Coated.



**FORM LINER
TEXTURE DETAIL**
See Special Provisions.

SUPERSTRUCTURE DETAILS
F.A.I. ROUTE 57 SEC. 10-32HB-3,K
CHAMPAIGN COUNTY
STATION 297+20.45
STRUCTURE NO. 010-0272

DESIGNED	Gholam R. Ahanchi	APPROVED	April 28, 2006
CHECKED	Rebecca L. Tharp	EXAMINED	Thomas J. Demasallo PRINCIPAL ENGINEER
DRAWN	Michael B. Mossman	PASSED	Ralph E. Anderson ENGINEER OF BRIDGES AND STRUCTURES
CHECKED	G.R.A. / R.L.T.		



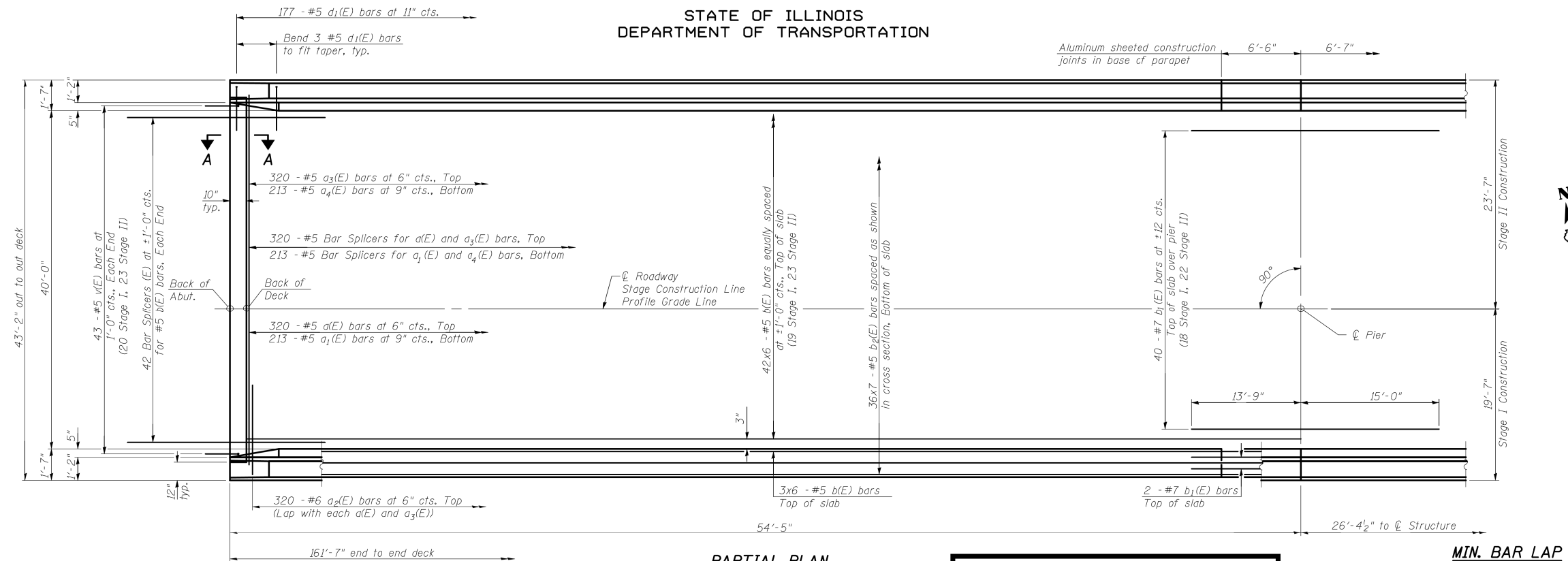
STATE OF ILLINOIS
DEPARTMENT OF TRANSPORTATION

TYPICAL SECTION
FOUR-LANE WITH MEDIAN

FILE NAME =	USER NAME = brandenburgtj	DESIGNED - TJB	REVISED -	SCALE:	SHEET 4 OF 7 SHEETS	STA.	TO STA.	F.A.P. RTE.	SECTION	COUNTY	TOTAL SHEETS	SHEET NO.
p:\1\084EBID\INTEG.illinois.gov\PIWDD\Documents\DOT Offices\District 5\Projects\0579\Drawings\Hydraulics\0579979-sht-typical		DRAWN	REVISED -					•	••	•••	23	13
\$MODELNAME\$	PLOT SCALE = 40.0000 / in.	CHECKED -	REVISED -								CONTRACT NO. 70979	
	PLOT DATE = 11/16/2015	DATE - 4/21/2015	REVISED -								ILLINOIS FED. AID PROJECT	

•VARIOUS
••FY 2016 BRIDGE DECK SEALING
•••CHAMPAIGN, DEWITT AND MCLEAN

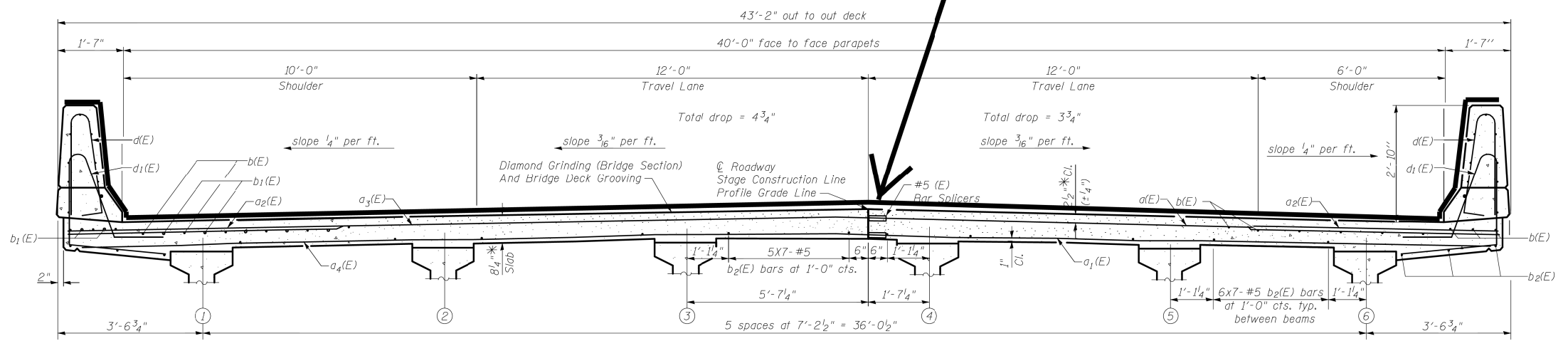
STATE OF ILLINOIS
DEPARTMENT OF TRANSPORTATION



PARTIAL PLAN

PROPOSED BRIDGE DECK CONCRETE SEALER

MIN. BAR LAP
#5 Bar = 1'-8"



TYPICAL SECTION; FOUR-LANE WITH PARAPET; DUAL STRUCTURES

SUPERSTRUCTURE
I-74 OVER LITTLE KICKAPOO CREEK
STRUCTURE NO. 057-0120
AND 057-0121

DESIGNED	RRD
CHECKED	AJS
DRAWN	KAS
CHECKED	JAR

Notes:
See Sheet 12 of 27 for superstructure details and Bill of Material.
Bars indicated thus 20 x 3-#5 etc. indicates 20 lines of bars with 3 lengths per line.
See Sheet 12 of 27 for parapet reinforcement.
See Sheet 27 of 27 for bar splicers details.
See Sheet 11 of 27 for diaphragm details.

CROSS SECTION
(Looking Upstation Westbound)
(Looking Downstation Eastbound)

* Prior to grinding

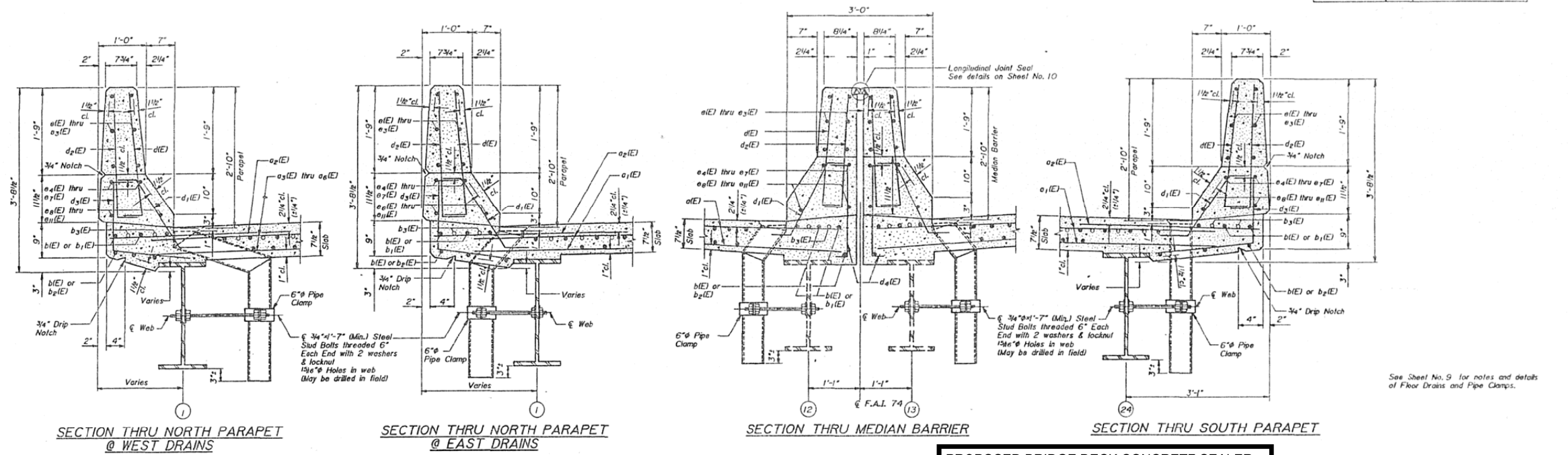
SHEET NO. 10 27 SHEETS	F.A.I. RTE.	SECTION	COUNTY	TOTAL SHEETS	SHEET NO.
	74	(57-21B)BR	MCLEAN	61	22
	SUPERSTRUCTURE DETAILS (1 OF 3)			CONTRACT NO. 70641	
FED. ROAD DIST. NO. 7 ILLINOIS FED. AID PROJECT					

STRAND ASSOCIATES, INC.

• VARIOUS
•• FY 2016 BRIDGE DECK SEALING
••• CHAMPAIGN, DEWITT AND MCLEAN

STATE OF ILLINOIS
DEPARTMENT OF TRANSPORTATION

ROUTE NO.	SECTION	COUNTY	TOTAL SHEETS	SHEET NO.	SHEET NO. B
F.A.I. 74	04B-2B	CHAMPAIGN	140	68	SHEET 23
FED. ROAD DIST. NO. 7	ILLINOIS PROJECT				

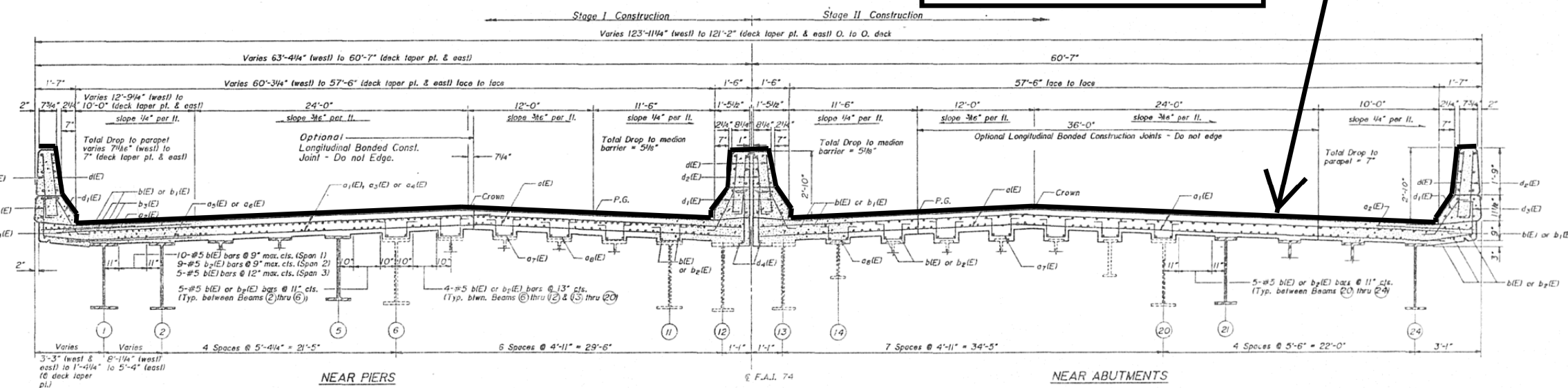


SECTION THRU NORTH PARAPET @ WEST DRAINS

SECTION THRU NORTH PARAPET @ EAST DRAINS

SECTION THRU MEDIAN BARRIER

SECTION THRU SOUTH PARAPET



NEAR PIERS

NEAR ABUTMENTS

CROSS SECTION (Looking East)

TYPICAL SECTION THRU CHAMPAIGN; SIX-LANE

SUPERSTRUCTURE DETAILS I

BASCOR, INC.
consulting engineers and planners

DESIGNED:	GSP
CHECKED:	HE
DRAWN:	SAW
CHECKED:	GSP

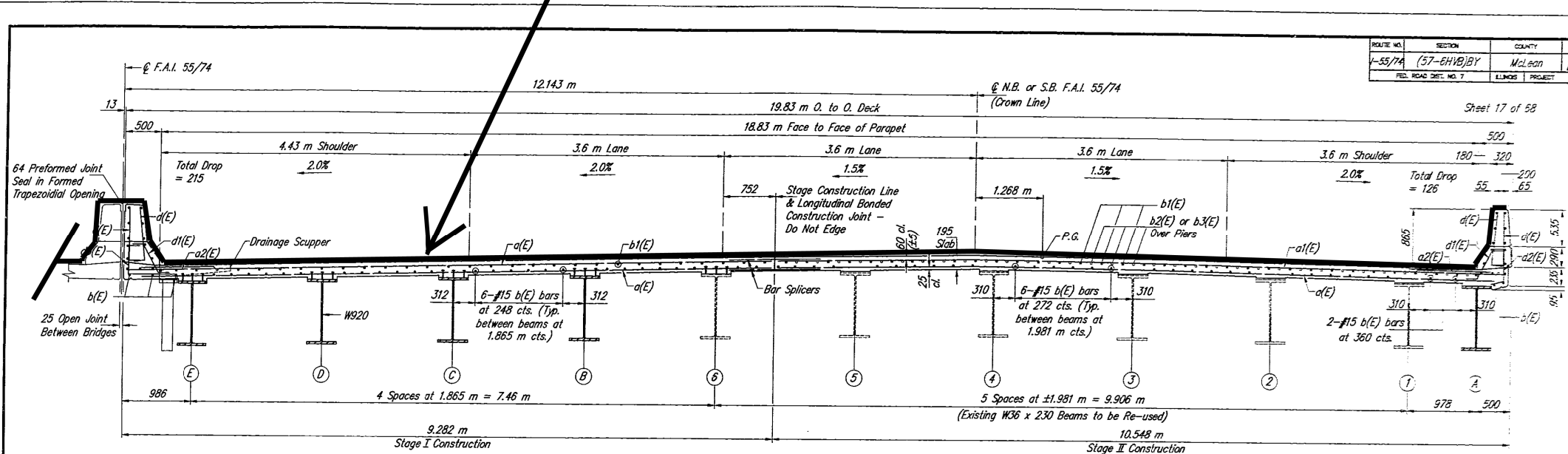
F.A.I. ROUTE 74
OVER MARKET STREET
SECTION 04B-2J BR
CHAMPAIGN COUNTY
STA. 1200+06.10

- VARIOUS
- FY 2016 BRIDGE DECK SEALING
- CHAMPAIGN, DEWITT AND MCLEAN

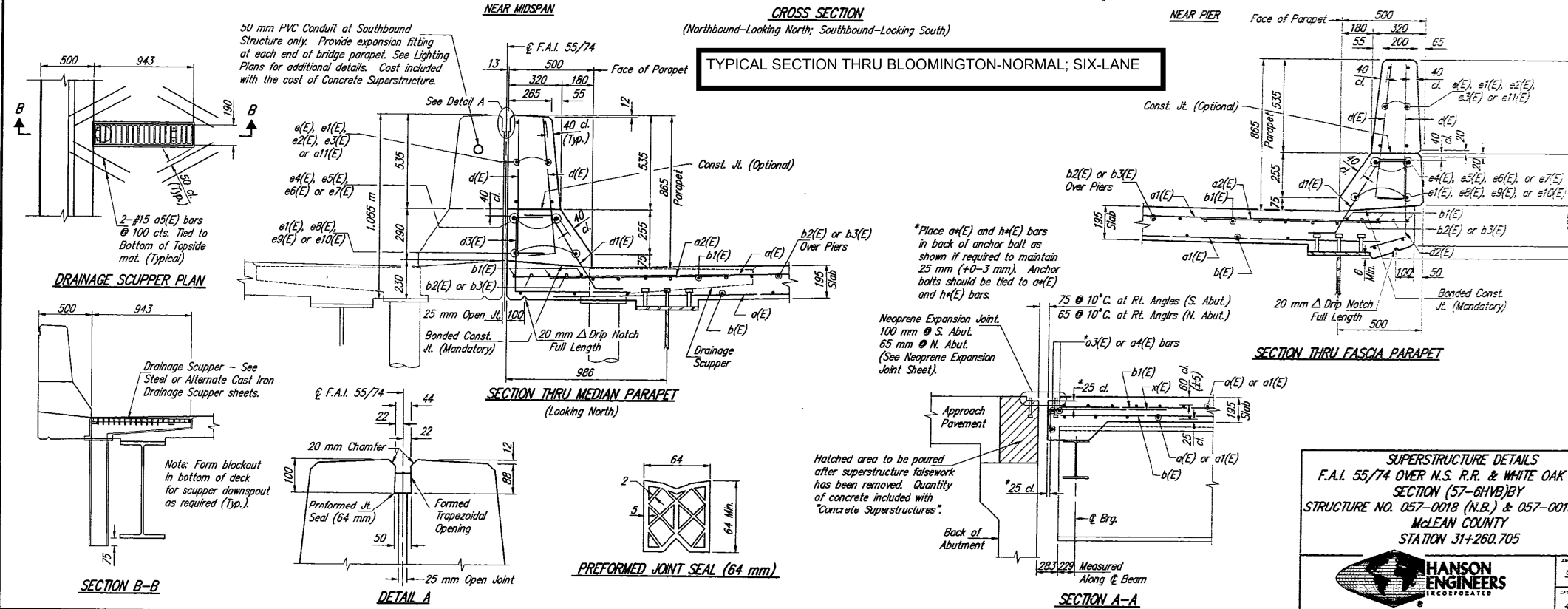
FILE NAME:	USER NAME = brandenburgj	DESIGNED - TJB	REVISED -	STATE OF ILLINOIS DEPARTMENT OF TRANSPORTATION	TYPICAL SECTION SIX-LANE WITH PARAPET THRU C-U	F.A.P. R.T.E.	SECTION	COUNTY	TOTAL SHEETS	SHEET NO.
pw:\11084EBID\INTEG\illinois.gov\PIWDD\Documents\DOT Offices\District 5\Projects\0579\DRAWING\Hydraulics\057979-shr-typoc	DESIGNED - TJB	REVISED -	•			••	•••	23	15	
PLOT SCALE = 48.0000' / in.	CHECKED -	REVISED -	CONTRACT NO. 70979							
MODELNAME\$	DATE - 4/21/2015	REVISED -	SCALE:			SHEET 6 OF 7 SHEETS	STA. TO STA.	ILLINOIS FED. AID PROJECT		

PROPOSED BRIDGE DECK CONCRETE SEALER

ROUTE NO.	SECTION	COUNTY	TOTAL SHEETS	SHEET NO.
55/74	(57-6HVB)BY	McLean	173	77
FED. ROAD DIST. NO. 7		ILLINOIS PROJECT		



TYPICAL SECTION THRU BLOOMINGTON-NORMAL; SIX-LANE



SUPERSTRUCTURE DETAILS
F.A.I. 55/74 OVER N.S. R.R. & WHITE OAK ROAD
SECTION (57-6HVB)BY
STRUCTURE NO. 057-0018 (N.B.) & 057-0019 (S.B.)
MCLEAN COUNTY
STATION 31+260.705

HANSON ENGINEERS
 INCORPORATED
 1825 SOUTH SOUTH STREET SPRINGFIELD, IL 62703

9452053
 DATE 4/17/98

• VARIOUS
 •• FY 2016 BRIDGE DECK SEALING
 ••• CHAMPAIGN, DEWITT AND MCLEAN

CHAMPAIGN COUNTY QUANTITIES

SCHEDULE OF QUANTITIES; CHAMPAIGN COUNTY

				ACTUAL MEASUREMENTS																	RURAL	URBAN
				DECK			APPROACH SLABS				PARAPETS (HUB, FACE & TOP)			TYPE B CURB (FACE & TOP)			TOTAL (SQ FT)					
				LENGTH (E -E)	WIDTH (F-F)	AREA (SQ FT)	LENGTH (FT)	DIMENSIONS INSIDE PARAPET/CURB		DIMENSIONS BEYOND PARAPET/CURB		AREA (SQ FT)	HUB, FACE & TOP (36' Typ.)	LENGTH (FT)		AREA (SQ FT)		FACE & TOP (9" Typ.)	LENGTH ALONG APPR.	AREA (SQ FT)		
								LENGTH	WIDTH	LENGTH	WIDTH			ALONG DECK	ALONG APPR.							
SN	ROUTE CARRIED	FEATURE CROSSED	ADT																			
010-0033	I-74 RAMP17.79&17.17	I-74 & RMP 17.17	10500	217.7	55.5	12084.0	20.0	12.0	56.7	8.0	40.7	2012.0	3.60	217.7	0.0	1567.7	0.83	12.0	39.8	15704.0		X
010-0039	US 150(FAS 1512)	SALINE BRANCH	5800	249.2	32.0	7973.1	20.0	10.0	33.2	10.0	24.0	1144.0	3.60	249.2	0.0	1794.0	0.75	10.0	30.0	10942.0		X
010-0040	US 150(FAS 1512)	UP & CNRL RR TR 199A	2850	729.7	32.0	23348.8	50.0	12.0	33.2	38.0	24.0	2619.8	3.60	729.7	0.0	5253.5	0.83	12.0	39.8	31262.0		X
010-0053	FAP 326 (IL 47)	STREAM	3550	21.5	40.0	860.0	30.0	0.0	0.0	30.0	40.0	2400.0	0.00	0.0	0.0	0.0	0.00	0.0	0.0	3260.0	X	
010-0058	FAP 709 (US 136)	LONE TREE CREEK	1350	42.1	32.0	1346.6	0.0	0.0	0.0	0.0	0.0	0.0	0.00	0.0	0.0	0.0	0.00	0.0	0.0	1347.0	X	
010-0082	FAS 516(ELM ST)	I-57	250	236.5	26.5	6267.3	0.0	0.0	0.0	0.0	0.0	0.0	3.30	236.5	11.5	1712.7	0.00	0.0	0.0	7980.0	X	
010-0103	FAU 7138	I-57	7600	218.8	24.0	5250.0	0.0	0.0	0.0	0.0	0.0	0.0	3.65	218.8	5.3	1674.3	0.00	0.0	0.0	6925.0		X
010-0105	TR 225	I-57	1200	218.8	24.0	5250.0	0.0	0.0	0.0	0.0	0.0	0.0	3.65	218.8	5.3	1674.3	0.00	0.0	0.0	6925.0		X
010-0128	CH 18(FAS 531)	I-57	4900	206.5	32.0	6608.0	30.0	30.0	33.2	0.0	0.0	1992.0	3.60	206.5	0.0	1486.8	0.75	30.0	90.0	10177.0	X	
010-0132	NEIL ST(FAU 7166)	I-74	19300	209.4	89.7	18785.0	20.0	20.0	89.7	0.0	0.0	3588.0	2.58	209.4	13.5	1219.9	0.00	0.0	0.0	23593.0		X
010-0145	TR 297 B	I-57	75	312.8	28.0	8758.4	30.0	12.0	28.0	18.0	29.2	1723.2	3.60	312.8	12.0	2425.0	0.75	18.0	54.0	12961.0	X	
010-0146	MARKET ST (CH 19)	I-72	650	218.5	26.5	5790.3	0.0	0.0	0.0	0.0	0.0	0.0	3.30	218.5	9.2	1563.5	0.00	0.0	0.0	7354.0		X
010-0158	FAU7177(LINC)	I-74	7100	186.5	86.3	16095.0	20.0	20.0	86.3	0.0	0.0	3452.0	3.10	186.5	11.5	1298.9	0.75	8.5	12.8	20859.0		X
010-0159	CH 50(FAS 1521)	I-74	9700	247.6	58.0	14360.8	30.0	13.5	58.0	16.5	59.2	3519.6	3.60	247.6	13.5	1977.1	0.75	16.5	49.5	19908.0		X
010-0160	TR 26	I-72	175	248.7	26.5	6590.6	0.0	0.0	0.0	0.0	0.0	0.0	3.30	248.7	13.5	1819.6	0.00	0.0	0.0	8411.0	X	
010-0161	TR 35	I-57	150	227.6	26.5	6031.4	0.0	0.0	0.0	0.0	0.0	0.0	3.30	227.6	13.5	1680.4	0.00	0.0	0.0	7712.0	X	
010-0162	TR 37 A	I-57	375	227.6	26.5	6031.4	0.0	0.0	0.0	0.0	0.0	0.0	3.30	227.6	13.5	1680.4	0.00	0.0	0.0	7712.0	X	
010-0163	TR 45	I-57	225	227.6	26.5	6031.4	0.0	0.0	0.0	0.0	0.0	0.0	3.30	227.6	13.5	1680.4	0.00	0.0	0.0	7712.0	X	
010-0164	TR 59	I-57	75	218.6	26.5	5792.9	0.0	0.0	0.0	0.0	0.0	0.0	3.30	218.6	13.5	1621.0	0.00	0.0	0.0	7414.0		X
010-0165	TR 83	I-57	450	230.8	26.5	6116.2	0.0	0.0	0.0	0.0	0.0	0.0	3.30	230.8	13.5	1701.5	0.00	0.0	0.0	7818.0		X
010-0166	TR 94	I-72	950	220.5	26.5	5843.3	0.0	0.0	0.0	0.0	0.0	0.0	3.30	220.5	10.7	1596.5	0.00	0.0	0.0	7440.0		X
010-0167	TR 104	I-74	275	246.5	24.0	5916.0	0.0	0.0	0.0	0.0	0.0	0.0	5.10	246.5	12.2	2763.2	0.00	0.0	0.0	8680.0		X
010-0169	FAP 813	I-74	400	209.3	24.0	5023.2	0.0	0.0	0.0	0.0	0.0	0.0	5.10	209.3	11.2	2363.3	0.00	0.0	0.0	7387.0		X
010-0170	DUNCAN RD(FAU 7155)	FAP 725	8700	218.0	43.0	9374.0	30.0	12.0	43.0	18.0	43.0	2580.0	3.20	218.0	12.0	1548.8	0.00	0.0	0.0	13503.0		X
010-0171	TR 146	I-57	1000	256.4	24.0	6153.6	0.0	0.0	0.0	0.0	0.0	0.0	5.10	256.4	12.2	2864.2	0.00	0.0	0.0	9018.0	X	
010-0172	TR 170	I-57	550	350.0	24.0	8400.0	0.0	0.0	0.0	0.0	0.0	0.0	5.10	350.0	12.2	3818.9	0.00	0.0	0.0	12219.0	X	
010-0173	TR 173(FAU 7110)	I-74	3700	189.0	40.0	7560.0	20.0	12.0	41.2	8.0	24.0	1372.8	3.60	189.0	0.0	1360.8	0.75	12.0	36.0	10330.0		X
010-0175	HIGHCROSS RD	I-74	4500	182.5	26.0	4745.0	0.0	0.0	0.0	0.0	0.0	0.0	4.00	182.5	8.0	1588.0	0.00	0.0	0.0	6333.0		X
010-0177	FAU 7206	I-74	450	182.5	26.0	4745.0	0.0	0.0	0.0	0.0	0.0	0.0	4.00	182.5	8.0	1588.0	0.00	0.0	0.0	6333.0		X
010-0179	TR 251	I-57	100	220.0	24.0	5280.0	0.0	0.0	0.0	0.0	0.0	0.0	3.80	220.0	9.2	1811.8	0.00	0.0	0.0	7092.0	X	
010-0180	TR 258	I-74	25	182.5	26.0	4745.0	0.0	0.0	0.0	0.0	0.0	0.0	4.00	182.5	8.0	1588.0	0.00	0.0	0.0	6333.0	X	
010-0181	TR 283	I-57	50	220.0	24.0	5280.0	0.0	0.0	0.0	0.0	0.0	0.0	3.75	220.0	9.2	1788.0	0.00	0.0	0.0	7068.0	X	
010-0182	TR 296	I-74	159	182.8	26.0	4752.8	30.0	30.0	27.2	0.0	0.0	1632.0	3.60	182.8	0.0	1316.2	0.75	30.0	90.0	7791.0		X
010-0183	TR 312	I-74	200	182.5	26.0	4745.0	0.0	0.0	0.0	0.0	0.0	0.0	4.00	182.5	8.0	1588.0	0.00	0.0	0.0	6333.0	X	
010-0185	MARKET ST(FAS533)	I-57	5600	224.4	32.0	7180.8	30.0	12.0	32.0	18.0	33.2	1963.2	3.60	224.4	12.0	1788.5	0.75	18.0	54.0	10987.0	X	
010-0186	FAP804(PROSPECT AVE)	I-74	31400	189.4	85.9	16269.5	20.0	11.5	85.9	8.5	86.5	3446.2	6.20	189.4	11.5	2633.8	0.75	8.5	12.8	22363.0		X
010-0189	TR 27	I-57	100	220.0	26.5	5830.0	0.0	0.0	0.0	0.0	0.0	0.0	3.30	220.0	13.5	1630.2	0.00	0.0	0.0	7461.0	X	
010-0207	TR 10	I-74	350	252.1	26.5	6680.7	0.0	0.0	0.0	0.0	0.0	0.0	3.30	252.1	0.0	1663.9	0.00	0.0	0.0	8345.0		X
010-0208	TR 30C	I-74	300	253.7	26.5	6723.1	0.0	0.0	0.0	0.0	0.0	0.0	3.30	253.7	0.0	1674.4	0.00	0.0	0.0	8398.0		X

•VARIOUS
 ••FY 2016 BRIDGE DECK SEALING
 •••CHAMPAIGN, DEWITT AND MCLEAN

FILE NAME =	USER NAME = brandenburgtj	DESIGNED - TJB	REVISED -	STATE OF ILLINOIS DEPARTMENT OF TRANSPORTATION	SCHEDULE OF QUANTITIES				F.A.P. RTE.	SECTION	COUNTY	TOTAL SHEETS	SHEET NO.
pw:\IL084EBIDINTEG.illinois.gov\PI\DOT Documents\DOT Offices\District 5\Projects\0579\DRAWING\Hydraulics\0579979-shr-schedu quantities.dgn													
\$MODELNAME\$	PLOT SCALE = 48.0000 ' / in.	CHECKED -	REVISED -		SCALE:	SHEET 1	OF 6	SHEETS	STA.	TO STA.			
	PLOT DATE = 11/16/2015	DATE - 4/21/2015	REVISED -									CONTRACT NO. 70979	
												ILLINOIS FED. AID PROJECT	

CHAMPAIGN COUNTY QUANTITIES

SCHEDULE OF QUANTITIES; CHAMPAIGN COUNTY																						
				ACTUAL MEASUREMENTS																TOTAL (SQ FT)	RURAL	URBAN
				DECK			APPROACH SLABS				PARAPETS (HUB, FACE & TOP)			TYPE B CURB (FACE & TOP)								
				LENGTH (E -E)	WIDTH (F-F)	AREA (SQ FT)	LENGTH (FT)	DIMENSIONS INSIDE PARAPET/CURB		DIMENSIONS BEYOND PARAPET/CURB		AREA (SQ FT)	HUB, FACE & TOP (36' Typ.)	LENGTH (FT)		AREA (SQ FT)	FACE & TOP (9' Typ.)	LENGTH ALONG APPR.	AREA (SQ FT)			
LENGTH	WIDTH	LENGTH	WIDTH					ALONG DECK	ALONG APPR.													
SN	ROUTE CARRIED	FEATURE CROSSED	ADT																			
010-0212	FAP 709 (US 136)	OWL CREEK	2700	119.2	42.5	5066.0	0.0	0.0	0.0	0.0	0.0	0.0	3.30	119.2	0.0	786.7	0.00	0.0	0.0	5853.0	X	
010-0214	FAP 709 (US 136)	SANGAMON RIVER	2700	191.0	42.5	8117.5	0.0	0.0	0.0	0.0	0.0	0.0	3.30	191.0	13.5	1438.8	0.00	0.0	0.0	9557.0	X	
010-0220	CH 12(FAS 516)	SALT FORK RIVER	2300	133.0	30.0	3990.0	30.0	0.0	0.0	30.0	30.0	1800.0	0.00	0.0	0.0	0.0	0.00	0.0	0.0	5790.0		X
010-0221	CH 12(FAS 516)	UPPER SALT FORK DIT	1100	120.5	30.0	3615.0	0.0	0.0	0.0	0.0	0.0	0.0	0.00	0.0	0.0	0.0	0.00	0.0	0.0	3615.0	X	
010-0235	US 150(FAS 1518)	SANGAMON RIVER	10400	458.0	31.5	14427.0	15.0	13.5	6.0	1.5	7.2	183.6	3.60	458.0	13.5	3492.0	0.75	1.5	4.5	18108.0		X
010-0236	ILL 49(FAP 836)	STREAM	2750	75.0	33.0	2475.0	0.0	0.0	0.0	0.0	0.0	0.0	0.00	0.0	0.0	0.0	0.00	0.0	0.0	2475.0	X	
010-0239	FAP 326 (IL 47)	STREAM	3600	109.3	37.3	4076.9	20.0	0.0	0.0	20.0	38.5	770.0	3.60	109.3	0.0	787.0	0.00	0.0	0.0	5634.0	X	
010-0240	CH 16(FAS 526)	E BR EMBARRAS RIVER	600	113.0	30.0	3390.0	33.0	0.0	0.0	33.0	34.2	2257.2	3.60	113.0	0.0	813.6	0.00	0.0	0.0	6461.0	X	
010-0244	FAS 522(CH 12)	DITCH	500	31.5	30.0	945.0	20.0	0.0	0.0	20.0	31.2	1248.0	3.60	31.5	0.0	226.8	0.00	0.0	0.0	2420.0	X	
010-0250	FAS 525(CH 16)	E BR EMBARRAS RIVER	1000	126.0	32.3	4069.8	32.4	0.0	0.0	32.4	30.0	1944.0	0.00	0.0	0.0	0.0	0.00	0.0	0.0	6014.0	X	
010-0252	FAP 709 (US 136)	SALT FORK VERMILION	4800	82.0	32.0	2624.0	24.3	0.0	0.0	24.3	33.2	1613.5	3.60	82.0	0.0	590.4	0.00	0.0	0.0	4828.0	X	
010-0254	FAP 813	I-57	2650	270.8	91.0	24642.8	50.0	12.0	92.2	38.0	72.2	7700.0	3.60	270.8	0.0	1949.8	0.75	12.0	36.0	34329.0		X
010-0262	IL 54	SANG. RIVER	950	151.7	32.0	4854.4	23.4	12.0	33.2	11.4	24.0	1344.0	3.60	151.7	0.0	1092.2	0.75	11.4	34.2	7325.0	X	
010-0267	FAU 7123(IL 10)	KASKASKIA RIVER	3200	64.0	36.0	2304.0	20.0	5.0	37.2	15.0	38.2	1518.0	3.60	64.0	0.0	460.8	0.75	5.0	15.0	4298.0		X
010-0268	FAP 836(IL 49)	STREAM	2750	49.0	32.0	1568.0	20.0	20.0	33.2	0.0	0.0	1328.0	3.60	49.0	0.0	352.8	0.75	20.0	60.0	3309.0	X	
010-0269	FAP 836(IL 49)	TRIB LITTLE VERM	2750	32.0	31.9	1020.8	20.0	12.0	31.9	8.0	32.9	1292.0	2.33	32.0	0.0	149.1	0.75	12.0	36.0	2498.0	X	
010-0272	CURTIS RD	I-57	2154	219.0	91.0	19929.0	30.0	30.0	91.0	0.0	0.0	5460.0	3.60	219.0	30.0	2008.8	0.00	0.0	0.0	27398.0		X
010-0275	ILL 10(FAS 1513)	CAMP CREEK	1850	134.0	32.0	4288.0	30.0	11.5	32.0	18.5	33.2	1964.4	3.60	134.0	11.5	1130.4	0.75	18.5	55.5	7439.0	X	
010-0276	FAP 709 (US 136)	BIG DITCH	2850	81.0	36.0	2916.0	30.0	0.0	0.0	30.0	37.3	2238.0	3.60	81.0	0.0	583.2	0.75	30.0	90.0	5828.0	X	
010-0277	FAS 518 (CH 22)	I-74	6400	219.0	40.0	8760.0	30.0	0.0	0.0	30.0	41.2	2472.0	3.60	219.0	0.0	1576.8	0.75	30.0	90.0	12899.0	X	
010-0280	ILL 49 (FAP 836)	SALT FORK	3300	350.0	36.0	12600.0	30.0	0.0	0.0	30.0	37.3	2238.0	3.60	350.0	0.0	2520.0	0.75	30.0	90.0	17448.0	X	
010-0281	FAP 326 (IL 47)	SANGAMON RIVER	3400	215.0	36.0	7740.0	30.0	0.0	0.0	30.0	37.3	2238.0	3.60	215.0	0.0	1548.0	0.75	30.0	90.0	11616.0	X	
010-0283	FAP 709 (US 136)	WILDCAT SLOUGH	2700	135.1	32.0	4323.2	30.0	15.0	32.0	15.0	33.2	1956.0	3.60	135.1	15.0	1188.7	0.75	15.0	45.0	7513.0	X	
010-0284	IL 49 (FAP 836)	LITTLE VERMILION RIV	2750	110.0	32.0	3520.0	30.0	0.0	0.0	30.0	31.2	1872.0	3.60	110.0	0.0	792.0	0.75	30.0	90.0	6274.0	X	
010-0285	CH 24	FAI 57	600	222.0	28.0	6216.0	30.0	15.0	28.0	15.0	28.9	1707.0	3.60	222.0	15.0	1814.4	0.75	15.0	45.0	9783.0	X	
010-0286	FAP 808 (IL 130)	E. BRANCH EMBARRAS RIVER	3500	121.0	36.0	4356.0	30.0	15.0	36.0	15.0	36.9	2187.0	3.60	121.0	15.0	1087.2	0.75	15.0	45.0	7676.0	X	
010-0287	FAP 326 (IL 47)	SANGAMON RIVER	5100	380.0	41.8	15865.0	30.0	30.0	41.8	0.0	0.0	2505.0	3.10	380.0	30.0	2728.0	0.00	0.0	0.0	21098.0		X
010-0288	TR 230	I-74	150	222.0	28.0	6216.0	30.0	15.0	28.0	15.0	29.2	1716.0	3.60	222.0	15.0	1814.4	0.75	15.0	45.0	9792.0	X	
010-0289	CH 50	FAI 74	2050	327.6	49.1	16085.2	30.0	30.0	49.1	0.0	0.0	2946.0	3.40	327.6	30.0	2635.7	0.00	0.0	0.0	21667.0		X
010-0291	WINDSOR RD	I-57	11300	215.0	47.3	10169.5	30.0	30.0	47.3	0.0	0.0	2838.0	3.33	215.0	15.0	1631.7	0.00	0.0	0.0	14640.0		X

TOTALS (SQ FT)	702,975	290,040	412,935
----------------	---------	---------	---------

•VARIOUS
 ••FY 2016 BRIDGE DECK SEALING
 •••CHAMPAIGN, DEWITT AND MCLEAN

CHAMPAIGN COUNTY TRAFFIC CONTROL & PROTECTION

SCHEDULE OF QUANTITIES; CHAMPAIGN COUNTY															
				TRAFFIC CONTROL & PROTECTION							PROSECUTION & PROGRESS		RURAL	URBAN	
				701451 WITH DETOUR SIGNING	701601	701501	701201	D5 DETAIL 70200000 ROAD CLOSURE (ADT < 200)	LOCATION	SUMMARY	CHANGEABLE MESSAGE SIGN (Calendar Days)	WORKING DAYS			PROSECUTION
SN	ROUTE CARRIED	FEATURE CROSSED	ADT												
010-0033	I-74 RAMP17.79&17.17	I-74 & RMP 17.17	10500		4				C17	4-701601; 1/2 WD; 1 SN		0.5	2 HRS PER 1/2 LANE		X
010-0039	US 150(FAS 1512)	SALINE BRANCH	5800				2		C20	2-701201; 1/2 WD; 1 SN		0.5	2 HRS PER SIDE		X
010-0040	US 150(FAS 1512)	UP & CNRL RR TR 199A	2850				2		C20	2-701201; 1/2 WD; 1 SN		0.5	2 HRS PER SIDE		X
010-0053	FAP 326 (IL 47)	STREAM	3550				2		C27	2-701201; 1/3 WD; 1 SN		0.33	2 HRS PER SIDE	X	
010-0058	FAP 709 (US 136)	LONE TREE CREEK	1350				2		M1	2-701201; 1/3 WD; 1 SN		0.33	2 HRS PER SIDE	X	
010-0082	FAS 516(ELM ST)	I-57	250					1	C25	1-70200000; 1/4 WD; 1 SN		0.25	2 HOURS	X	
010-0103	FAU 7138	I-57	7600			2			C7	2-701501; 1/2 WD; 1 SN		0.5	2 HRS PER SIDE		X
010-0105	TR 225	I-57	1200				2		C5	2-701201; 1/2 WD; 1 SN		0.5	2 HRS PER SIDE		X
010-0128	CH 18(FAS 531)	I-57	4900				2		C5	2-701201; 1/2 WD; 1 SN		0.5	2 HRS PER SIDE	X	
010-0132	NEIL ST(FAU 7166)	I-74	19300		4				C16	4-701601; 1/2 WD; 1 SN		0.5	2 HRS PER LANE		X
010-0145	TR 297 B	I-57	75					1	C4	1-70200000; 1/3 WD; 1 SN		0.33	2 HOURS	X	
010-0146	MARKET ST (CH 19)	I-72	650				2		C8	2-701201; 1/3 WD; 1 SN		0.33	2 HRS PER SIDE		X
010-0158	FAU7177(LINC)	I-74	7100		4				C16	4-701601; 1/2 WD; 1 SN		0.5	2 HRS PER LANE		X
010-0159	CH 50(FAS 1521)	I-74	9700		4				C12	4-701601; 1 WD; 1 SN		1	2 HRS PER 1/2 LANE		X
010-0160	TR 26	I-72	175					1	C8	1-70200000; 1/3 WD; 1 SN		0.33	2 HOURS	X	
010-0161	TR 35	I-57	150					1	C25	1-70200000; 1/4 WD; 1 SN		0.25	2 HOURS	X	
010-0162	TR 37 A	I-57	375				2		C25	2-701201; 1/4 WD; 1 SN		0.25	2 HRS PER SIDE	X	
010-0163	TR 45	I-57	225				2		C23	2-701201; 1/3 WD; 1 SN		0.33	2 HRS PER SIDE	X	
010-0164	TR 59	I-57	75					1	C23	1-70200000; 1/3 WD; 1 SN		0.33	2 HOURS		X
010-0165	TR 83	I-57	450				2		C23	2-701201; 1/3 WD; 1 SN		0.33	2 HRS PER SIDE		X
010-0166	TR 94	I-72	950				2		C8	2-701201; 1/3 WD; 1 SN		0.33	2 HRS PER SIDE		X
010-0167	TR 104	I-74	275				2		C12	2-701201; 1/2 WD; 1 SN		0.5	2 HRS PER SIDE		X
010-0169	FAP 813	I-74	400				2		C12	2-701201; 1/2 WD; 1 SN		0.5	2 HRS PER SIDE		X
010-0170	DUNCAN RD(FAU 7155)	FAP 725	8700			2			C7	2-701501; 1/2 WD; 1 SN		0.5	2 HRS PER SIDE		X
010-0171	TR 146	I-57	1000				2		C13	2-701201; 1/3 WD; 1 SN		0.33	2 HRS PER SIDE	X	
010-0172	TR 170	I-57	550				2		C14	2-701201; 1/2 WD; 1 SN		0.5	2 HRS PER SIDE	X	
010-0173	TR 173(FAU 7110)	I-74	3700			2			C17	2-701501; 1/2 WD; 1 SN		0.5	2 HRS PER SIDE		X
010-0175	HIGHCROSS RD	I-74	4500				2		C18	2-701201; 1/3 WD; 1 SN		0.33	2 HRS PER SIDE		X
010-0177	FAU 7206	I-74	450				2		C18	2-701201; 1/3 WD; 1 SN		0.33	2 HRS PER SIDE		X
010-0179	TR 251	I-57	100					1	C4	1-70200000; 1/3 WD; 1 SN		0.33	2 HOURS	X	
010-0180	TR 258	I-74	25					1	C19	1-70200000; 1/2 WD; 1 SN		0.5	2 HOURS	X	
010-0181	TR 283	I-57	50					1	C4	1-70200000; 1/3 WD; 1 SN		0.33	2 HOURS	X	
010-0182	TR 296	I-74	159					1	C21	1-70200000; 1/3 WD; 1 SN		0.33	2 HOURS		X
010-0183	TR 312	I-74	200					1	C21	1-70200000; 1/3 WD; 1 SN		0.33	2 HOURS	X	
010-0185	MARKET ST(FAS533)	I-57	5600				2		C14	2-701201; 1/2 WD; 1 SN		0.5	2 HRS PER SIDE	X	
010-0186	FAP804 (PROSPECT AVE)	I-74	31400		4				C15	4-701601; 1/2 WD; 1 SN		0.5	2 HRS PER LANE		X
010-0189	TR 27	I-57	100					1	C25	1-70200000; 1/4 WD; 1 SN		0.25	2 HOURS	X	
010-0207	TR 10	I-74	350				2		C10	2-701201; 1/2 WD; 1 SN		0.5	2 HRS PER SIDE		X
010-0208	TR 30C	I-74	300				2		C10	2-701201; 1/2 WD; 1 SN		0.5	2 HRS PER SIDE		X

•VARIOUS
 ••FY 2016 BRIDGE DECK SEALING
 •••CHAMPAIGN, DEWITT AND MCLEAN

FILE NAME =	USER NAME = brandenburgtj	DESIGNED - TJB	REVISED -	STATE OF ILLINOIS	SCHEDULE OF QUANTITIES	F.A.P. RTE.	SECTION	COUNTY	TOTAL SHEETS	SHEET NO.
pw:\IL084EBIDINTEG\illinois.gov\PIDOT\Documents\IDOT Offices\District 5\Projects\0579\DRAWING\Hydraulics\0579979-sht-schedu\REVISED.dgn				DEPARTMENT OF TRANSPORTATION		•	••	•••	23	19
MODELNAME#	PLOT SCALE = 40.0000' / in.	CHECKED -	REVISED -			SCALE:		SHEET 3 OF 6 SHEETS		STA. TO STA.
	PLOT DATE = 11/16/2015	DATE - 4/21/2015	REVISED -							ILLINOIS FED. AID PROJECT
										CONTRACT NO. 70979

CHAMPAIGN COUNTY TRAFFIC CONTROL & PROTECTION

SCHEDULE OF QUANTITIES; CHAMPAIGN COUNTY															
				TRAFFIC CONTROL & PROTECTION							PROSECUTION & PROGRESS		RURAL	URBAN	
SN	ROUTE CARRIED	FEATURE CROSSED	ADT	701451 WITH DETOUR SIGNING	701601	701501	701201	D5 DETAIL 70200000 ROAD CLOSURE (ADT < 200)	LOCATION	SUMMARY	CHANGEABLE MESSAGE SIGN (Calendar Days)	WORKING DAYS			PROSECUTION
010-0212	FAP 709 (US 136)	OWL CREEK	2700				2		C26	2-701201; 1/3 WD; 1 SN		0.33	2 HRS PER SIDE	X	
010-0214	FAP 709 (US 136)	SANGAMON RIVER	2700				2		C26	2-701201; 1/3 WD; 1 SN		0.33	2 HRS PER SIDE	X	
010-0220	CH 12(FAS 516)	SALT FORK RIVER	2300				2		C22	2-701201; 1/2 WD; 1 SN		0.5	2 HRS PER SIDE		X
010-0221	CH 12(FAS 516)	UPPER SALT FORK DIT	1100				2		C22	2-701201; 1/2 WD; 1 SN		0.5	2 HRS PER SIDE	X	
010-0235	US 150(FAS 1518)	SANGAMON RIVER	10400			2			C11	2-701501; 1/3 WD; 1 SN		0.33	2 HRS PER SIDE		X
010-0236	ILL 49(FAP 836)	STREAM	2750				2		C2	2-701201; 1/3 WD; 1 SN		0.33	2 HRS PER SIDE	X	
010-0239	FAP 326 (IL 47)	STREAM	3600				2		C27	2-701201; 1/3 WD; 1 SN		0.33	2 HRS PER SIDE	X	
010-0240	CH 16(FAS 526)	E BR EMBARRAS RIVER	600				2		C1	2-701201; 1/4 WD; 1 SN		0.25	2 HRS PER SIDE	X	
010-0244	FAS 522(CH 12)	DITCH	500				2		C1	2-701201; 1/4 WD; 1 SN		0.25	2 HRS PER SIDE	X	
010-0250	FAS 525(CH 16)	E BR EMBARRAS RIVER	1000				2		C1	2-701201; 1/4 WD; 1 SN		0.25	2 HRS PER SIDE	X	
010-0252	FAP 709 (US 136)	SALT FORK VERMILION	4800				2		C24	2-701201; 1/2 WD; 1 SN		0.5	2 HRS PER SIDE	X	
010-0254	FAP 813	I-57	2650		4				C13	4-701601; 2/3 WD; 1 SN		0.67	2 HRS PER LANE		X
010-0262	IL 54	SANG. RIVER	950				2		M2	2-701201; 1/2 WD; 1 SN		0.5	2 HRS PER SIDE	X	
010-0267	FAU 7123(IL 10)	KASKASKIA RIVER	3200				2		C9	2-701201; 1/2 WD; 1 SN		0.5	2 HRS PER SIDE		X
010-0268	FAP 836(IL 49)	STREAM	2750				2		C3	2-701201; 1/2 WD; 1 SN		0.5	2 HRS PER SIDE	X	
010-0269	FAP 836(IL 49)	TRIB LITTLE VERM	2750				2		C2	2-701201; 1/3 WD; 1 SN		0.33	2 HRS PER SIDE	X	
010-0272	CURTIS RD	I-57	2154		4				C6	4-701601; 2/3 WD; 1 SN		0.67	2 HRS PER LANE		X
010-0275	ILL 10(FAS 1513)	CAMP CREEK	1850				2		C9	2-701201; 1/2 WD; 1 SN		0.5	2 HRS PER SIDE	X	
010-0276	FAP 709 (US 136)	BIG DITCH	2850				2		C24	2-701201; 1/2 WD; 1 SN		0.5	2 HRS PER SIDE	X	
010-0277	FAS 518 (CH 22)	I-74	6400				2		C21	2-701201; 1/3 WD; 1 SN		0.33	2 HRS PER SIDE	X	
010-0280	ILL 49 (FAP 836)	SALT FORK	3300				2		C3	2-701201; 1/2 WD; 1 SN		0.5	2 HRS PER SIDE	X	
010-0281	FAP 326 (IL 47)	SANGAMON RIVER	3400				2		C27	2-701201; 1/3 WD; 1 SN		0.33	2 HRS PER SIDE	X	
010-0283	FAP 709 (US 136)	WILDCAT SLOUGH	2700				2		C26	2-701201; 1/3 WD; 1 SN		0.33	2 HRS PER SIDE	X	
010-0284	IL 49 (FAP 836)	LITTLE VERMILION RIV	2750				2		C2	2-701201; 1/3 WD; 1 SN		0.33	2 HRS PER SIDE	X	
010-0285	CH 24	FAI 57	600				2		C19	2-701201; 1/2 WD; 1 SN		0.5	2 HRS PER SIDE	X	
010-0286	FAP 808 (IL 130)	E. BRANCH EMBARRAS RIVER	3500				2		C1	2-701201; 1/4 WD; 1 SN		0.25	2 HRS PER SIDE	X	
010-0287	FAP 326 (IL 47)	SANGAMON RIVER	5100			2			C11	2-701501; 1/3 WD; 1 SN		0.33	2 HRS PER SIDE		X
010-0288	TR 230	I-74	150					1	C18	1-70200000; 1/3 WD; 1 SN		0.33	2 HOURS	X	
010-0289	CH 50	FAI 74	2050			2			C11	2-701501; 1/3 WD; 1 SN		0.33	2 HRS PER SIDE		X
010-0291	WINDSOR RD	I-57	11300			2			C6	2-701501; 1/3 WD; 1 SN		0.33	2 HRS PER SIDE		X

TC & P SET-UPS and CMS CALENDAR DAYS	28	14	86	12
WORKING DAYS PER STANDARD	4	3	17	4

0	28
---	----

•VARIOUS
 ••FY 2016 BRIDGE DECK SEALING
 •••CHAMPAIGN, DEWITT AND MCLEAN

DEWITT & MCLEAN COUNTY QUANTITIES

SCHEDULE OF QUANTITIES; DEWITT COUNTY																						
				ACTUAL MEASUREMENTS																TOTAL (SQ FT)	RURAL	URBAN
				DECK			APPROACH SLABS				PARAPETS (HUB, FACE & TOP)			TYPE B CURB (FACE & TOP)								
				LENGTH (E -E)	WIDTH (F-F)	AREA (SQ FT)	LENGTH (FT)	DIMENSIONS INSIDE PARAPET/CURB		DIMENSIONS BEYOND PARAPET/CURB		AREA (SQ FT)	HUB, FACE & TOP (3.6' Typ.)	LENGTH (FT)		AREA (SQ FT)	FACE & TOP (9" Typ.)	LENGTH ALONG APPR.	AREA (SQ FT)			
LENGTH	WIDTH	LENGTH	WIDTH					ALONG DECK	ALONG APPR.													
SN	ROUTE CARRIED	FEATURE CROSSED	ADT																			
020-0024	TR 5 RELOCATED	I-74	75	256.5	26.5	6797.3	0.0	0.0	0.0	0.0	0.0	0.0	3.80	256.5	0.0	1949.4	0.00	0.0	0.0	8747.0	X	
020-0035	IL 54 (FAP 71)	TRIB TO SALT CREEK	3850	107.5	65.0	6987.5	30.0	13.5	65.0	16.5	66.2	3939.6	3.60	107.5	13.5	968.4	0.75	16.5	24.8	11921.0	X	
020-0058	FAS 1517(US 150)	SALT CREEK	1650	175.0	32.0	5600.0	30.0	0.0	32.0	30.0	33.2	1992.0	3.60	175.0	0.0	1260.0	0.75	30.0	90.0	8942.0	X	
020-0064	FAP 71 (IL 54)	SALT CREEK	1350	172.7	32.0	5526.4	30.0	15.0	32.0	15.0	33.8	1974.0	3.60	172.7	15.0	1459.4	0.75	15.0	45.0	9005.0	X	

TOTAL SQ FT	38,615	38,615	
-------------	--------	--------	--

SCHEDULE OF QUANTITIES; MCLEAN COUNTY																						
				ACTUAL MEASUREMENTS																TOTAL (SQ FT)	RURAL	URBAN
				DECK			APPROACH SLABS				PARAPETS (HUB, FACE & TOP)			TYPE B CURB (FACE & TOP)								
				LENGTH (E -E)	WIDTH (F-F)	AREA (SQ FT)	LENGTH (FT)	DIMENSIONS INSIDE PARAPET/CURB		DIMENSIONS BEYOND PARAPET/CURB		AREA (SQ FT)	HUB, FACE & TOP (3.6' Typ.)	LENGTH (FT)		AREA (SQ FT)	FACE & TOP (9" Typ.)	LENGTH ALONG APPR.	AREA (SQ FT)			
LENGTH	WIDTH	LENGTH	WIDTH					ALONG DECK	ALONG APPR.													
SN	ROUTE CARRIED	FEATURE CROSSED	ADT																			
057-0085	ILL 54	STREAM	1050	30.0	40.0	1200.0	0.0	0.0	0.0	0.0	0.0	0.0	2.30	30.0	0.0	138.0	0.00	0.0	0.0	1338.0	X	
057-0100	US 136	SMALL STREAM	1100	30.0	39.2	1176.0	30.0	0.0	39.2	30.0	39.2	2352.0	2.30	30.0	0.0	138.0	0.75	30.0	90.0	3756.0	X	
057-0110	ILL 165	MACKINAW CREEK	1050	245.5	32.0	7856.0	20.0	20.0	32.0	0.0	0.0	1280.0	3.60	245.5	20.0	2055.6	0.00	0.0	0.0	11192.0	X	
057-0122	FAU 6374 CH 30	I-74/SE OF BLOOMNGTN	1600	304.3	26.5	8064.0	0.0	0.0	0.0	0.0	0.0	0.0	3.60	304.3	12.0	2363.8	0.00	0.0	0.0	10428.0		X
057-0123	TR 296	I-74/SE OF BLOOMNGTN	400	272.0	26.5	7208.0	0.0	0.0	0.0	0.0	0.0	0.0	3.60	272.0	12.0	2131.2	0.00	0.0	0.0	9340.0		X
057-0124	FAU 6431 CH 29	I-74/SE OF BLOOMNGTN	1550	265.5	26.5	7035.8	0.0	0.0	0.0	0.0	0.0	0.0	3.60	265.5	12.0	2084.4	0.00	0.0	0.0	9121.0		X
057-0130	TR 366A	I-74	100	267.2	26.5	7080.8	0.0	0.0	0.0	0.0	0.0	0.0	3.60	267.2	12.0	2096.6	0.00	0.0	0.0	9178.0	X	
057-0131	TR 390	I-74/2 MI W OF LEROY	100	280.0	26.5	7420.0	0.0	0.0	0.0	0.0	0.0	0.0	3.60	280.0	15.0	2232.0	0.00	0.0	0.0	9652.0	X	
057-0132	SBI 119 SP#2488	I-74	5700	225.4	65.5	14763.7	30.0	0.0	0.0	30.0	20.0	1200.0	3.60	225.4	12.0	1795.7	0.75	18.0	54.0	17814.0	X	
057-0135	US 136	I-74	1250	319.7	65.5	20940.4	30.0	12.0	20.0	18.0	20.0	1200.0	3.60	319.7	12.0	2474.6	0.75	18.0	54.0	24669.0	X	
057-0149	SBI 119 SP#2488	SALT CREEK	650	21.4	40.0	856.0	0.0	0.0	0.0	0.0	0.0	0.0	0.00	0.0	0.0	0.0	0.00	0.0	0.0	856.0	X	
057-0150	FAS 1478	CREEK	650	21.3	40.0	852.0	0.0	0.0	0.0	0.0	0.0	0.0	0.00	0.0	0.0	0.0	0.00	0.0	0.0	852.0	X	
057-0185	US 136	BRANCH SALT CREEK	1250	214.8	32.0	6872.0	30.0	0.0	0.0	30.0	32.0	1920.0	0.00	0.0	0.0	0.0	0.00	0.0	0.0	8792.0	X	
057-0191	ILL 9	BRAYS CREEK	1700	52.5	32.0	1680.0	0.0	0.0	0.0	0.0	0.0	0.0	0.00	0.0	0.0	0.0	0.00	0.0	0.0	1680.0	X	
057-0200	SBI 119 SP#2488	W FK SALT CREEK	700	147.5	32.0	4720.0	20.0	0.0	0.0	20.0	33.2	1328.0	3.60	147.5	0.0	1062.0	0.75	20.0	60.0	7170.0	X	
057-0214	I-39 RAMP 816 SB	I-55& CD#2284/2287	1600	271.9	26.0	7069.4	100.0	12.0	27.2	88.0	30.0	5932.8	3.60	271.9	0.0	1957.7	0.75	12.0	36.0	14996.0		X
057-0218	US 136	SALT CREEK	1250	114.0	30.0	3420.0	45.0	12.0	31.2	33.0	24.0	2332.8	3.60	114.0	0.0	820.8	0.75	12.0	36.0	6610.0	X	
057-0220	ILL 165	BR MACKINAW RIVER	800	70.0	32.0	2240.0	20.0	12.0	33.2	8.0	22.0	1148.8	3.60	70.0	0.0	504.0	0.75	12.0	36.0	3929.0	X	
057-0221	ILL 165	BR MACKINAW RIVER	1050	76.9	32.0	2460.8	34.0	12.0	33.2	22.0	22.0	1764.8	3.60	76.9	0.0	553.7	0.75	12.0	36.0	4816.0	X	
057-0222	ILL 165	BR MACKINAW RIVER	1050	84.3	32.0	2697.6	42.0	10.0	33.2	32.0	22.0	2072.0	3.60	84.3	0.0	607.0	0.75	10.0	30.0	5407.0	X	
057-0224	US 150	KICKAPOO CREEK	4650	62.0	40.0	2480.0	30.0	0.0	0.0	30.0	41.2	2472.0	3.60	62.0	0.0	446.4	0.75	30.0	90.0	5489.0		X
057-0241	US 150	SALT CREEK (N FORK)	950	120.0	32.0	3840.0	30.0	0.0	0.0	30.0	32.8	1968.0	3.60	120.0	0.0	864.0	0.75	30.0	90.0	6762.0	X	
057-0246	US 150	KICKAPOO CREEK	7600	147.5	40.0	5900.0	30.0	0.0	0.0	30.0	40.8	2448.0	3.60	147.5	0.0	1062.0	0.75	30.0	90.0	9500.0		X
057-0248	FAS 2484 (IL 165)	MONEY CREEK	450	116.0	32.0	3712.0	30.0	15.0	32.0	15.0	33.8	1974.0	3.60	116.0	15.0	1051.2	0.75	15.0	45.0	6783.0	X	

TOTAL SQ FT	190,130	131,256	58,874
-------------	---------	---------	--------

•VARIOUS
 ••FY 2016 BRIDGE DECK SEALING
 •••CHAMPAIGN, DEWITT AND MCLEAN

DEWITT & MCLEAN COUNTY TRAFFIC CONTROL & PROTECTION

SCHEDULE OF QUANTITIES; DEWITT COUNTY															
				TRAFFIC CONTROL & PROTECTION						PROSECUTION & PROGRESS					
				701451 WITH DETOUR SIGNING	701601	701501	701201	D5 DETAIL 70200000 ROAD CLOSURE (ADT < 200)	LOCATION	SUMMARY	CHANGEABLE MESSAGE SIGN (Calendar Days)	WORKING DAYS	PROSECUTION	RURAL	URBAN
SN	ROUTE CARRIED	FEATURE CROSSED	ADT												
020-0024	TR 5 RELOCATED	I-74	75					1	M3	1-70200000; 1/2 WD; 1 SN		0.5	2 HOURS	X	
020-0035	IL 54 (FAP 71)	TRIB TO SALT CREEK	3850		4				D1	4-701601; 1 WD; 1 SN		1	2 HRS PER 1/2 LANE	X	
020-0058	FAS 1517(US 150)	SALT CREEK	1650				2		D1	2-701201; 1/2 WD; 1 SN		0.5	2 HRS PER SIDE	X	
020-0064	FAP 71 (IL 54)	SALT CREEK	1350				2		D1	2-701201; 1/2 WD; 1 SN		0.5	2 HRS PER SIDE	X	

TC & P SET-UPS and CMS CALENDAR DAYS		4		4	1
WORKING DAYS PER STANDARD		1		1	1

		3
--	--	---

SCHEDULE OF QUANTITIES; MCLEAN COUNTY															
				TRAFFIC CONTROL & PROTECTION						PROSECUTION & PROGRESS					
				701451 WITH DETOUR SIGNING	701601	701501	701201	D5 DETAIL 70200000 ROAD CLOSURE (ADT < 200)	LOCATION	SUMMARY	CHANGEABLE MESSAGE SIGN (Calendar Days)	WORKING DAYS	PROSECUTION	RURAL	URBAN
SN	ROUTE CARRIED	FEATURE CROSSED	ADT												
057-0085	ILL 54	STREAM	1050				2		M2	2-701201; 1/2 WD; 1 SN		0.5	2 HRS PER SIDE	X	
057-0100	US 136	SMALL STREAM	1100				2		M1	2-701201; 1/3 WD; 1 SN		0.33	2 HRS PER SIDE	X	
057-0110	ILL 165	MACKINAW CREEK	1050				2		M9	2-701201; 1/4 WD; 1 SN		0.25	2 HRS PER SIDE	X	
057-0122	FAU 6374 CH 30	I-74/SE OF BLOOMNGTN	1600				2		M6	2-701201; 1/4 WD; 1 SN		0.25	2 HRS PER SIDE		X
057-0123	TR 296	I-74/SE OF BLOOMNGTN	400				2		M6	2-701201; 1/4 WD; 1 SN		0.25	2 HRS PER SIDE		X
057-0124	FAU 6431 CH 29	I-74/SE OF BLOOMNGTN	1550				2		M6	2-701201; 1/4 WD; 1 SN		0.25	2 HRS PER SIDE		X
057-0130	TR 366A	I-74	100					1	M5	1-70200000; 1/3 WD; 1 SN		0.33	2 HOURS	X	
057-0131	TR 390	I-74/2 MI W OF LEROY	100					1	M5	1-70200000; 1/3 WD; 1 SN		0.33	2 HOURS	X	
057-0132	SBI 119 SP#2488	I-74	5700		4				M4	4-701601; 1 WD; 1 SN		1	2 HRS PER 1/2 LANE	X	
057-0135	US 136	I-74	1250		4				M3	4-701601; 1 WD; 1 SN		1	2 HRS PER 1/2 LANE	X	
057-0149	SBI 119 SP#2488	SALT CREEK	650				2		M4	2-701201; 1/4 WD; 1 SN		0.25	2 HRS PER SIDE	X	
057-0150	FAS 1478	CREEK	650				2		M4	2-701201; 1/4 WD; 1 SN		0.25	2 HRS PER SIDE	X	
057-0185	US 136	BRANCH SALT CREEK	1250				2		M4	2-701201; 1/4 WD; 1 SN		0.25	2 HRS PER SIDE	X	
057-0191	ILL 9	BRAYS CREEK	1700				2		M8	2-701201; 1/2 WD; 1 SN		0.5	2 HRS PER SIDE	X	
057-0200	SBI 119 SP#2488	W FK SALT CREEK	700				2		M4	2-701201; 1/4 WD; 1 SN		0.25	2 HRS PER SIDE	X	
057-0214	I-39 RAMP 816 SB	I-55& CD#2284/2287	1600	1					M7	FAI 39 SB RAMP CLOSURE	28	2	SETUP & SEALING		X
057-0218	US 136	SALT CREEK	1250				2		M1	2-701201; 1/3 WD; 1 SN		0.33	2 HRS PER SIDE	X	
057-0220	ILL 165	BR MACKINAW RIVER	800				2		M9	2-701201; 1/4 WD; 1 SN		0.25	2 HRS PER SIDE	X	
057-0221	ILL 165	BR MACKINAW RIVER	1050				2		M9	2-701201; 1/4 WD; 1 SN		0.25	2 HRS PER SIDE	X	
057-0222	ILL 165	BR MACKINAW RIVER	1050				2		M9	2-701201; 1/4 WD; 1 SN		0.25	2 HRS PER SIDE	X	
057-0224	US 150	KICKAPOO CREEK	4650				2		M6	2-701201; 1/4 WD; 1 SN		0.25	2 HRS PER SIDE		X
057-0241	US 150	SALT CREEK (N FORK)	950				2		M3	2-701201; 1/2 WD; 1 SN		0.5	2 HRS PER SIDE	X	
057-0246	US 150	KICKAPOO CREEK	7600				2		M5	2-701201; 1/3 WD; 1 SN		0.33	2 HRS PER SIDE		X
057-0248	FAS 2484 (IL 165)	MONEY CREEK	450				2		M8	2-701201; 1/2 WD; 1 SN		0.5	2 HRS PER SIDE	X	

TC & P SET-UPS and CMS CALENDAR DAYS		1	8	38	2
WORKING DAYS PER STANDARD		2	2	6	1

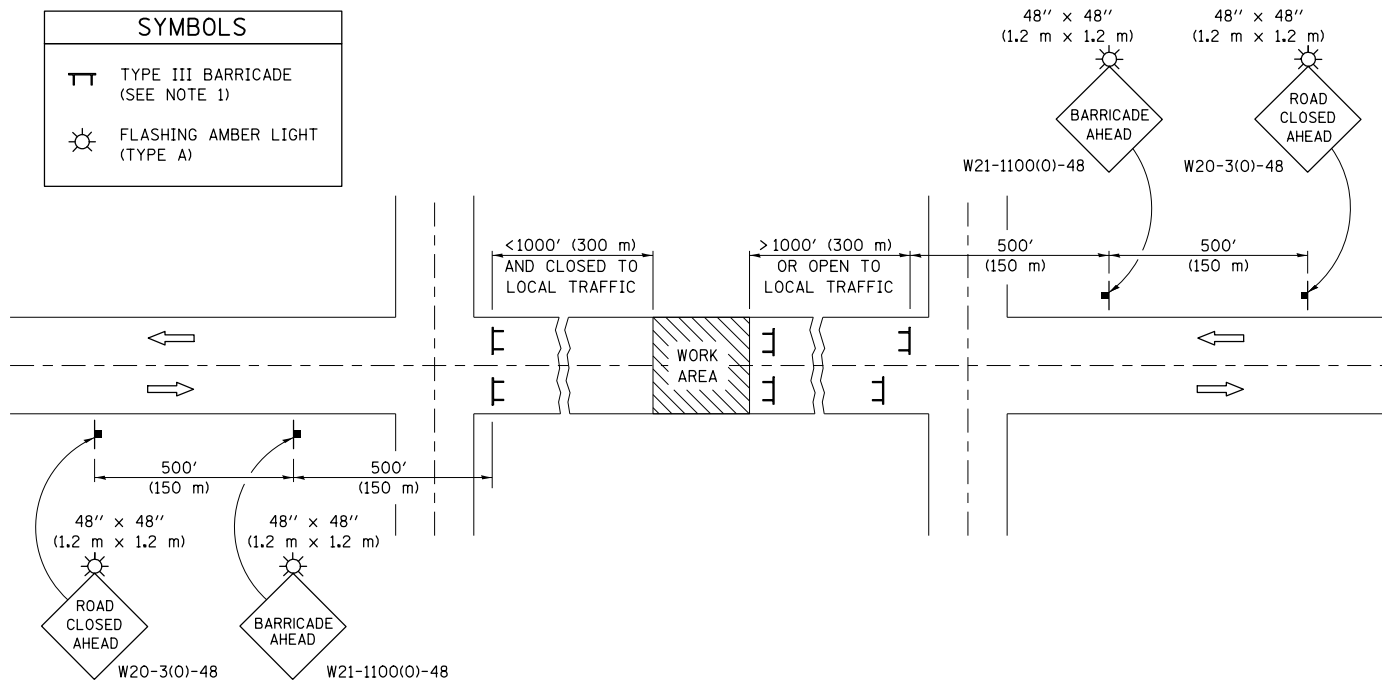
		28	11
--	--	----	----

•VARIOUS
 ••FY 2016 BRIDGE DECK SEALING
 •••CHAMPAIGN, DEWITT AND MCLEAN

ROAD CLOSURE

SIDEROAD / STREET CLOSURE

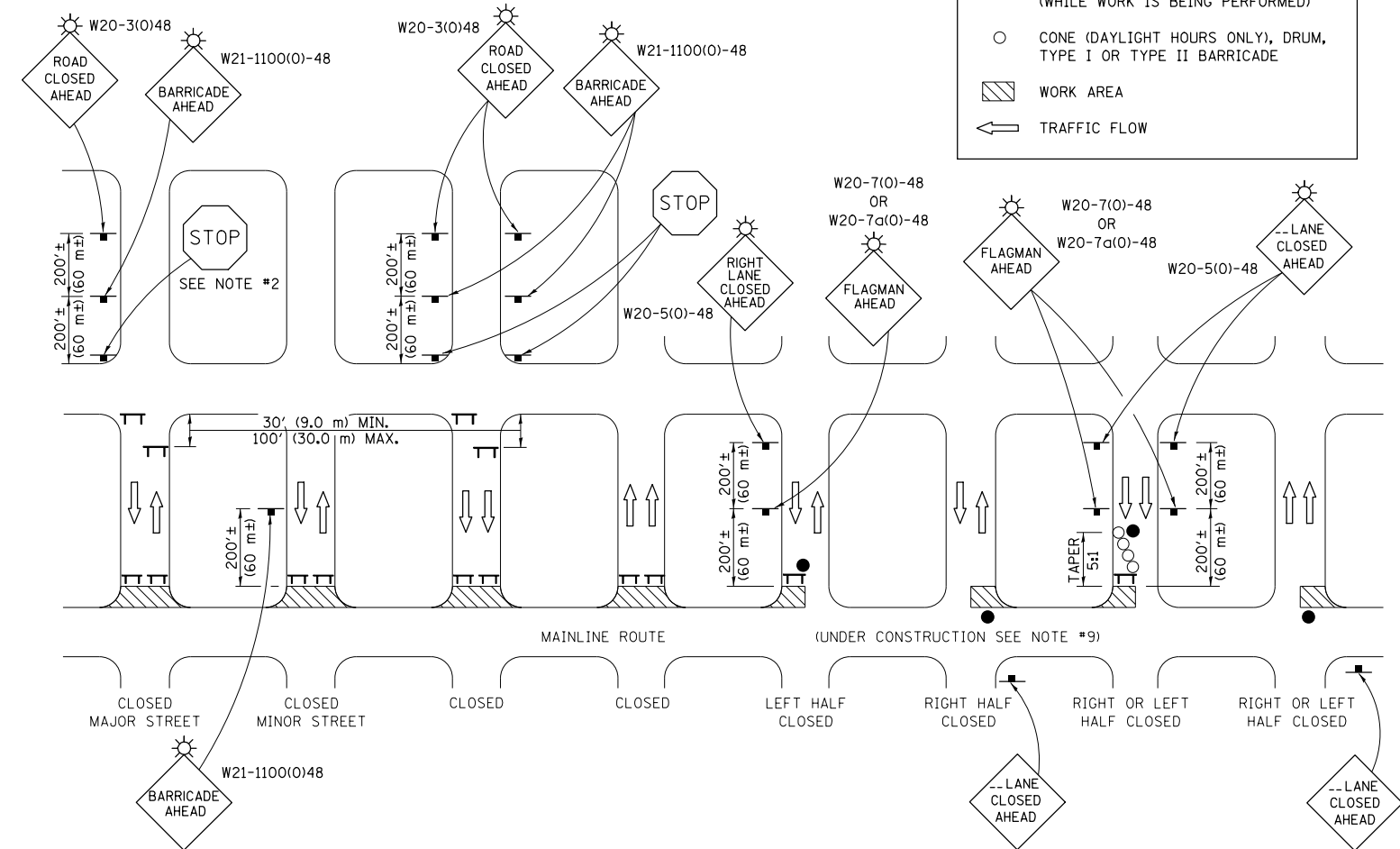
SYMBOLS	
	TYPE III BARRICADE (SEE NOTE 1)
	FLASHING AMBER LIGHT (TYPE A)



GENERAL NOTES

- TYPE III BARRICADES SHALL BE AS SHOWN ON STANDARD 701901 "TYPICAL APPLICATIONS OF TYPE III BARRICADES CLOSING A ROAD". EACH TYPE III BARRICADE SHALL HAVE TWO FLASHING AMBER LIGHTS MOUNTED ABOVE IT.
- IF THE ROAD IS OPEN TO LOCAL TRAFFIC OR EXCEEDS 1000' (300 m), ANOTHER SET OF TYPE III BARRICADES, EQUIPPED AS IN NOTE 1 ABOVE, SHALL BE PLACED AT EACH END OF THE WORK AREA.
- WHEN A STOP CONDITION EXISTS, NO SIGNS ARE REQUIRED IN ADVANCE OF THE "STOP" SIGN WHEN THE ROAD IS CLOSED WITHIN 100' (30 m) OF THE INTERSECTION.
- STANDARD 701901 SHALL APPLY FOR THE PLACEMENT & DESIGN OF TYPE III BARRICADES.
- IF A TYPE III BARRICADE WITH AN ATTACHED SIGN PANEL WHICH MEETS NCHRP 350 IS NOT AVAILABLE, THE SIGNS MAY BE MOUNTED ON AN NCHRP 350 TEMPORARY SIGN SUPPORT DIRECTLY IN FRONT OF THE BARRICADE.
- REFLECTORIZED STRIPING SHALL APPEAR ON BOTH SIDES OF THE TYPE III BARRICADES IF ROAD IS OPEN TO LOCAL TRAFFIC.
- ALL SIGNS SHALL BE POST MOUNTED IF THE CLOSURE TIME EXCEEDS FOUR DAYS.
- A MINIMUM OF TWO FLASHING LIGHTS SHALL BE USED AT NIGHT ON EACH APPROACH IN ADVANCE OF THE WORK AREA. FLASHING LIGHTS SHALL BE INSTALLED ABOVE THE FIRST TWO SIGNS IN THE SERIES.
- LONGITUDINAL DIMENSIONS MAY BE ADJUSTED SLIGHTLY TO FIT FIELD CONDITIONS.
- FORMS BT. 725 AND BT. 726 ARE REQUIRED.
- WHEN A SIDEROAD INTERSECTS THE HIGHWAY ON WHICH WORK IS BEING PERFORMED, ADDITIONAL TRAFFIC DEVICES SHALL BE ERECTED AND PROVIDED AS DIRECTED BY THE ENGINEER.
- AN ADDITIONAL SIGN MAY BE REQUIRED AT A MAJOR INTERSECTING ROAD IN ADVANCE OF THE CLOSURE. THE ADDITIONAL SIGN SHALL GIVE THE DISTANCE TO THE BARRICADE IN MILES OR FRACTIONS OF A MILE.

SYMBOLS	
	TYPE III BARRICADE (SEE NOTE)
	FLASHING LIGHT
	FLAGGER WITH TRAFFIC CONTROL SIGN (WHILE WORK IS BEING PERFORMED)
	CONES (DAYLIGHT HOURS ONLY), DRUM, TYPE I OR TYPE II BARRICADE
	WORK AREA
	TRAFFIC FLOW



GENERAL NOTES

- TYPE III BARRICADES SHALL BE AS SHOWN ON "TYPICAL APPLICATIONS OF TYPE III BARRICADES CLOSING A ROAD". EACH TYPE III BARRICADE SHALL HAVE TWO FLASHING AMBER LIGHTS MOUNTED ABOVE IT.
- WHERE A STOP CONDITION EXISTS, AS SHOWN ABOVE, WARNING SIGNS MAY BE OMITTED IN ADVANCE OF THE "STOP" SIGN.
- STANDARD 701901 SHALL APPLY FOR THE PLACEMENT & MANUFACTURE OF TYPE III BARRICADES.
- ALL SIGNS SHALL BE POST MOUNTED IF THE CLOSURE TIME EXCEEDS FOUR DAYS.
- ONE FLASHING LIGHT IS REQUIRED ABOVE EACH ADVANCE WARNING SIGN DURING HOURS OF DARKNESS.
- LONGITUDINAL DIMENSIONS MAY BE ADJUSTED SLIGHTLY TO FIT FIELD CONDITIONS.
- FORMS BT 725 AND BT 726 ARE REQUIRED.
- THE MAINLINE ROUTE TEMPORARY TRAFFIC CONTROL SHALL BE IN ACCORDANCE WITH THE PLANS, SPECIAL PROVISIONS AND STANDARD SPECIFICATIONS.
- ALL FLAGGERS REQUIRED AT SIDE ROADS AND ENTRANCES REMAINING OPEN TO TRAFFIC AND/OR ADDITIONAL BARRICADES REQUIRED BY THE ENGINEER TO CLOSE SIDE ROADS AND ENTRANCES WILL BE PAID FOR ACCORDING TO ARTICLE 109.04.

Note: All dimensions are in INCHES (millimeters) unless otherwise shown.

- * VARIOUS
- ** FY 2016 BRIDGE DECK SEALING
- *** CHAMPAIGN, DEWITT & MCLEAN COUNTIES

FILE NAME =	USER NAME = brandenburgtj	DESIGNED -	REVISED - 11/06
pw:\IL\084EBIDINTEG\illinois.gov\PIWIDOT\Documents\DOT Offices\District 5\Projects\0579\Drawings\Hydraulics\057979-shr-det\		DRAWN -	REVISED - 12/07
		CHECKED -	REVISED - 09/09 - KJT
		DATE -	REVISED -

STATE OF ILLINOIS
DEPARTMENT OF TRANSPORTATION

TRAFFIC CONTROL & PROTECTION DEVICES
(ROAD & SIDEROAD/STREET CLOSURES)

SCALE: SHEET NO. 1 OF 1 SHEETS STA. TO STA.

DISTRICT 5 DETAIL NO. 7020000

F.A. RTE.	SECTION	COUNTY	TOTAL SHEETS	SHEET NO.
*	**	***	23	23
CONTRACT NO. 70979				
FED. ROAD DIST. NO. ILLINOIS FED. AID PROJECT				