

**INDEX OF SHEETS**

(SEE SHEET 2)

**HIGHWAY STANDARDS**

(SEE SHEET 2)

**STATE OF ILLINOIS  
DEPARTMENT OF TRANSPORTATION  
DIVISION OF HIGHWAYS**

**PROPOSED  
HIGHWAY PLANS**

**F.A.P. ROUTE 662 (IL 4) AND POLECAT CREEK RD /GOLDENROD DR  
SECTION D6 2015-1 HSRR  
PROJECT HSR-0662 (070)  
PAVEMENT & RAIL CROSSING RECONSTRUCTION  
SANGAMON COUNTY /CHATHAM & BALL TOWNSHIP**

C-96-066-14

D-96-066-14

F.A.P. RTE.	SECTION	COUNTY	TOTAL SHEETS	SHEET NO.
662	D6 2015-1 HSRR	SANGAMON	172	1
ILLINOIS			CONTRACT NO. 72G95	DOT# 440769R
			# 172 + 2 = 174 TOTAL SHEETS	MP 194.90

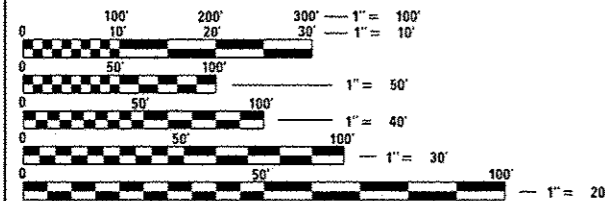


**FUNCTIONAL CLASSIFICATION**

**URBAN PRINCIPAL ARTERIAL (IL ROUTE 4)**  
 2015 ADT = 10,925 (2035 ADT = 16,200)  
 PV = 93.0% SU = 3.5% MU = 3.5%

**URBAN COLLECTOR (POLECAT CREEK RD)**  
 2015 ADT = 625 (2035 ADT = 900)  
 PV = 96.0% SU = 2.0% MU = 2.0%

**URBAN COLLECTOR (GOLDENROD DRIVE)**  
 2015 ADT = 3,955 (2035 ADT = 5,900)  
 PV = 96.0% SU = 2.0% MU = 2.0%



FULL SIZE PLANS HAVE BEEN PREPARED USING STANDARD ENGINEERING SCALES. REDUCED SIZED PLANS WILL NOT CONFORM TO STANDARD SCALES. IN MAKING MEASUREMENTS ON REDUCED PLANS, THE ABOVE SCALES MAY BE USED.

J.U.L.I.E.  
JOINT UTILITY LOCATION INFORMATION FOR EXCAVATION  
1-800-892-0123  
OR 811

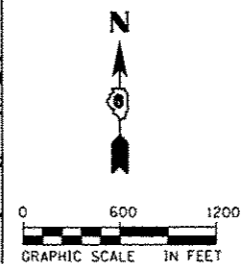
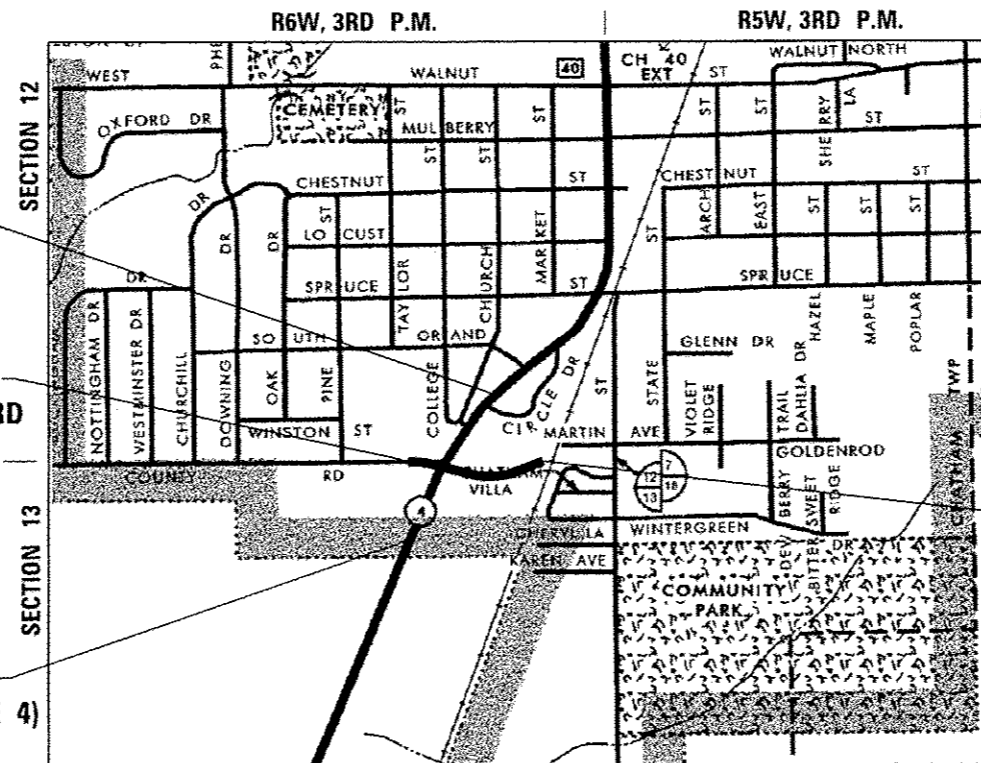
DISTRICT 6 NO. (217) 782-7301  
PROJECT ENGINEER: JAY EDWARDS, P.E. (217) 785-0597  
TOWNSHIP: CHATHAM & BALL

CONTRACT NO. 72G95

BEGIN PROJECT  
FAP 662 (IL RTE 4)  
STA 119+01.00

BEGIN PROJECT  
POLECAT CREEK RD  
STA 35+00.00

END PROJECT  
FAP 662 (IL RTE 4)  
STA 130+78.00



VILLAGE OF CHATHAM

LOCATION MAP

	NET LENGTH	GROSS LENGTH
FAP 662 (IL 4)	1177.00 FT (0.223 MI)	1177.00 FT (0.223 MI)
POLECAT CREEK RD /GOLDENROD DRIVE	1350.00 FT (0.256 MI)	1350.00 FT (0.256 MI)
<b>PROJECT TOTAL</b>	<b>2527.00 FT (0.479 MI)</b>	<b>2527.00 FT (0.479 MI)</b>



*James A. Colbrook, Jr.*  
 JAMES A. COLBROOK, JR., P.E.  
 IL. REG. P.E. NO. 062-047577  
 EXPIRES: 11-30-2017

STATE OF ILLINOIS  
 DEPARTMENT OF TRANSPORTATION  
 DIVISION OF HIGHWAYS

SUBMITTED *December 23, 2015*

*Roger L. Dinkell, Sr.*  
 DEPUTY DIRECTOR OF HIGHWAYS, REGION ENGINEER

*Jan 29, 2016*  
*Maureen M. Addis, P.E.*  
 ENGINEER OF DESIGN AND ENVIRONMENT

*Jan 29, 2016*  
*James A. Colbrook, Jr.*  
 DIRECTOR OF HIGHWAYS, CHIEF ENGINEER

**PRINTED BY THE AUTHORITY  
OF THE STATE OF ILLINOIS**

REVISED 2-22-16

**AECOM**  
 AECOM  
 345 EAST ASH AVENUE, SUITE B  
 DECATUR, ILLINOIS 62526  
 PH. 217-875-4800

**INDEX OF SHEETS**

- 1 COVER SHEET
- 2 INDEX OF SHEETS, HIGHWAY STANDARDS AND COMMITMENTS
- 3 GENERAL NOTES
- 4 - 17 SUMMARY OF QUANTITIES
- 18 - 19 EXISTING TYPICAL SECTIONS
- 20 - 21 PROPOSED TYPICAL SECTIONS
- 22 - 34 SCHEDULE OF QUANTITIES
- 35 - 36 ALIGNMENT, TIES & BENCHMARKS
- 37 - 42 REMOVAL PLANS
- 43 - 49 ROADWAY PLAN AND PROFILE
- 50 - 64 SUGGESTED STAGES OF CONSTRUCTION AND TRAFFIC CONTROL
- 65 STORM WATER POLLUTION PREVENTION PLAN
- 66 - 71 EROSION CONTROL AND LANDSCAPING PLANS
- 72 - 77 DRAINAGE PLAN AND PROFILE
- 78 - 80 WATER MAIN PLANS
- 81 - 80 UTILITY PLANS
- 90A - 90B S.U.E. INVESTIGATION OF UNDERGROUND UTILITIES
- 91 - 95 INTERSECTION DETAILS
- 96 - 98 CONSTRUCTION DETAILS
- 99 MISCELLANEOUS DETAILS
- 100 - 101 ENTRANCE DETAILS
- 102 DETENTION BASIN DETAILS
- 103 END SECTIONS 12" DETAIL
- 104 - 109 SIGNING AND PAVEMENT MARKING PLANS
- 110 - 114 TRAFFIC SIGNAL PLANS
- 115 - 118 LIGHTING PLANS
- 119 - 126 SOIL BORING LOGS
- 127 - 140 DISTRICT 6 DETAILS
- 141 - 149 CROSS SECTIONS - POLECAT CREEK RD.
- 150 - 155 CROSS SECTIONS - GOLDENROD DR.
- 156 - 170 CROSS SECTIONS - IL RTE 4
- 171 - 172 CROSS SECTIONS - CHURCH STREET

**HIGHWAY STANDARDS**

- 000001-06 STANDARD SYMBOLS, ABBREVIATIONS AND PATTERNS
- 001006 DECIMAL OF AN INCH AND OF A FOOT
- 280001-07 TEMPORARY EROSION CONTROL SYSTEMS
- 420001-08 PAVEMENT JOINTS
- 420111-03 PCC PAVEMENT ROUNDOUTS
- 424001-08 PERPENDICULAR CURB RAMPS FOR SIDEWALKS
- 424006-02 DIAGONAL CURB RAMPS FOR SIDEWALKS
- 442101-07 CLASS B PATCHES
- 482001-02 HMA SHOULDER ADJACENT TO FLEXIBLE PAVEMENT
- 542301-03 PRECAST REINFORCED CONCRETE FLARED END SECTION
- 602301-04 INLET, TYPE A
- 602306-03 INLET, TYPE B
- 602401-03 MANHOLE, TYPE A
- 602601-03 PRECAST REINFORCED CONCRETE FLAT SLAB TOP
- 602701-02 MANHOLE STEPS
- 604001-04 FRAME AND LIDS, TYPE 1
- 604006-05 FRAME AND GRATE, TYPE 3
- 604036-03 GRATE, TYPE 8
- 604046-03 FRAME AND GRATE, TYPE 10
- 604091-03 FRAME AND GRATE, TYPE 24
- 606001-06 CONCRETE CURB TYPE B AND COMBINATION CONCRETE CURB AND GUTTER
- 606301-04 PC CONCRETE ISLANDS AND MEDIANS
- 701001-02 OFF-ROAD OPERATIONS, 2L, 2W, MORE THAN 15' (4.5 m) AWAY
- 701006-05 OFF-ROAD OPERATIONS, 2L, 2W, 15' (4.5 m) TO 24" (600 mm) FROM PAVEMENT EDGE
- 701201-04 LANE CLOSURE, 2L, 2W, DAY ONLY, FOR SPEEDS ≥ 45 MPH
- 701301-04 LANE CLOSURE, 2L, 2W, SHORT TIME OPERATIONS
- 701306-03 LANE CLOSURE, 2L, 2W, SLOW MOVING OPERATIONS DAY ONLY, FOR SPEEDS ≥ 45 MPH
- 701311-03 LANE CLOSURE, 2L, 2W, MOVING OPERATIONS - DAY ONLY
- 701326-04 LANE CLOSURE, 2L, 2W, PAVEMENT WIDENING, FOR SPEEDS ≥ 45 MPH
- 701501-06 URBAN LANE CLOSURE, 2L, 2W, UNDIVIDED
- 701701-09 URBAN LANE CLOSURE, MULTILANE INTERSECTION
- 701801-05 SIDEWALK, CORNER OR CROSSWALK CLOSURE
- 701901-04 TRAFFIC CONTROL DEVICES
- 720001-01 SIGN PANEL MOUNTING DETAILS
- 720006-04 SIGN PANEL ERECTION DETAILS
- 728001-01 TELESCOPING STEEL SIGN SUPPORT
- 780001-05 TYPICAL PAVEMENT MARKINGS
- 781001-03 TYPICAL APPLICATIONS RAISED REFLECTIVE PAVEMENT MARKERS
- 782001 CURB REFLECTORS
- 805001-01 ELECTRICAL SERVICE INSTALLATION DETAILS
- 814001-03 HANDHOLES
- 814006-02 DOUBLE HANDHOLES
- 857001-01 STANDARD PHASE DESIGNATION DIAGRAMS AND PHASE SEQUENCES
- 862001-01 UNINTERRUPTABLE POWER SUPPLY (UPS)
- 873001-02 TRAFFIC SIGNAL GROUNDING & BONDING
- 876001-03 PEDESTRIAN PUSH BUTTON POST
- 877001-05 STEEL MAST ARM ASSEMBLY AND POLE 16' THROUGH 55'
- 877002-02 STEEL MAST ARM ASSEMBLY AND POLE 56' THROUGH 75'
- 878001-10 CONCRETE FOUNDATION DETAILS
- 880006-01 TRAFFIC SIGNAL MOUNTING DETAILS
- 886001-01 DETECTOR LOOP INSTALLATIONS
- 886006-01 TYPICAL LAYOUT FOR DETECTION LOOPS
- BLR 21-9 TYPICAL APPLICATION OF TRAFFIC CONTROL DEVICES FOR CONSTRUCTION ON RURAL LOCAL HIGHWAYS

**COMMITMENTS**

HIGH SPEED RAIL PROJECT MANAGEMENT CONSULTANT WILL COORDINATE WITH THE UPRR TO ENSURE RAILROAD CROSSING SURFACES ARE WIDE ENOUGH FOR EACH STAGE OF IDOT CONSTRUCTION. THE PROJECT MANAGEMENT CONTACT PERSON IS ELLIOTT RAMOS (312) 793-0478.

ALL UTILITIES, SCHOOL DISTRICTS, LOCAL POLICE, AND FIRE DEPARTMENTS SHALL BE NOTIFIED BY THE CONTRACTOR A MINIMUM OF 7 DAYS PRIOR TO THE START OF CONSTRUCTION.

CONSTRUCTION ADJACENT TO THE CHATHAM ELEMENTARY SCHOOL WILL BE LIMITED TO THE SUMMER MONTHS WHEN SCHOOL IS NOT IN SESSION.

<b>DISTRICT SIX</b>	
EXAMINED <i>November 24th</i>	20 <i>15</i>
<i>John C. Wynn</i>	
<b>OPERATIONS ENGINEER</b>	
EXAMINED <i>December 3</i>	20 <i>15</i>
<i>Ron Chamberlain</i>	
<b>PROJECT IMPLEMENTATION ENGINEER</b>	
EXAMINED <i>December 8</i>	20 <i>15</i>
<i>Jeffrey P. Myn</i>	
<b>PROGRAM DEVELOPMENT ENGINEER</b>	

1 REV. 2-17-16

FILE NAME : 0672095-sh-hwystnd.dgn	USER NAME : jim_campbell	DESIGNED - JAC	REVISED - DCS 2/17/2016	<b>STATE OF ILLINOIS DEPARTMENT OF TRANSPORTATION</b>	<b>INDEX OF SHEETS, HIGHWAY STANDARDS AND COMMITMENTS</b>	SCALE: NTS	SHEET 1 OF 1 SHEETS	STA. TO STA.	F.A.P. RTE. 662	SECTION DG 2015-1 HSRR	COUNTY SANGAMON	TOTAL SHEETS 172	SHEET NO. 2	CONTRACT NO. 72095	ILLINOIS FED. AID PROJECT
MODEL NAME :	PLOT SCALE : 40,0000' / 1"	CHECKED - JAC	REVISED -												
	PLOT DATE : 2/17/2016	DATE -	REVISED -												

CODE NO.	ITEM	UNIT	TOTAL QUANTITY	CONSTRUCTION CODE					
				ROADWAY 440769R	TRAFFIC SIGNALS 440769R	LIGHTING 440769R	WATER MAIN 440769R	WATER MAIN 440769R	TIF FUNDS \$500,000 MAX **
				100% HSR	100% HSR	100% HSR	100% HSR	100% CHATHAM	100% TIFF
				0004	0021	0021	0043	0043	0004
60602800	CONCRETE GUTTER, TYPE B	FOOT	937						937
60604400	COMBINATION CONCRETE CURB AND GUTTER, TYPE B-6.18	FOOT	2749	2703					46
60605000	COMBINATION CONCRETE CURB AND GUTTER, TYPE B-6.24	FOOT	212	111					101
60609200	COMBINATION CONCRETE CURB AND GUTTER, TYPE M-6.12	FOOT	108						108
60618300	CONCRETE MEDIAN SURFACE, 4 INCH	50 FT	399						399
66700205	PERMANENT SURVEY MARKERS, TYPE I	EACH	3	2					1
67000400	ENGINEER'S FIELD OFFICE, TYPE A	CAL MO	13	13					
67100100	MOBILIZATION	LSUM	1	1					
70100460	TRAFFIC CONTROL AND PROTECTION, STANDARD 701306	LSUM	1	1					
70100500	TRAFFIC CONTROL AND PROTECTION, STANDARD 701326	LSUM	1	1					
70103815	TRAFFIC CONTROL SURVEILLANCE	CAL DA	54	54					
70106800	CHANGEABLE MESSAGE SIGN	CAL MO	28	28					
70300100	SHORT TERM PAVEMENT MARKING	FOOT	682	682					
70300210	TEMPORARY PAVEMENT MARKING LETTERS AND SYMBOLS	50 FT	485	485					

\* =SPECIALTY ITEM

\*\* ONCE TIFF MAX IS REACHED, MOVE REMAINING QUANTITIES BACK TO ROADWAY COLUMN

REV. 2-22-16

FILE NAME : 0672095-shr-sumofquant.dgn	USER NAME : matthew.libero	DESIGNED - JAC	REVISED -
		DRAWN - JTC	REVISED -
		CHECKED - JAC	REVISED -
		DATE -	REVISED -

STATE OF ILLINOIS  
DEPARTMENT OF TRANSPORTATION

SUMMARY OF QUANTITIES

F.A.P. RTE.	SECTION	COUNTY	TOTAL SHEETS	SHEET NO.
662	D6 2015-1 HSR	SANGAMON	172	10
CONTRACT NO. 72095			ILLINOIS FED. AID PROJECT	

SCALE: NONE SHEET 7 OF 14 SHEETS STA. TO STA.

WATER MAIN AND CASING PIPE SCHEDULE

STATION	STATION	OFFSET	STREET	20800150 TRENCH BACKFILL				56100600	56100800	56104900	56105100	56400500	56400825	60248900	X0327241	X0327387	X5610700	X5610748	X5610750	X5630708	X5630710
				WATER MAIN 6"	WATER MAIN 10"	WATER VALVES 6"	WATER VALVES 10"	FIRE HYDRANTS TO BE REMOVED	FIRE HYDRANT WITH AUXILIARY VALVE, VALVE BOX AND TEE	VALVE VAULTS, TYPE A, 5" DIAMETER, TYPE 1 FRAME, CLOSED LID	STEEL CASING PIPE IN TRENCH, 24 INCH	STEEL CASING PIPE, BORED AND JACKED, 24"	WATER MAIN REMOVAL	WATER MAIN LINE STOP 6"	WATER MAIN LINE STOP 10"	CONNECTION TO EXISTING WATER MAIN 6"	CONNECTION TO EXISTING WATER MAIN 10"				
				LENGTH (FT)	WIDTH (FT)	DEPTH (FT)	CU YD	FOOT	FOOT	EACH	EACH	EACH	EACH	FOOT	FOOT	FOOT	EACH	EACH	EACH	EACH	
38+60		17' LT	POLECAT CREEK RD							1											
38+60		12' LT	POLECAT CREEK RD																	1	
38+60	41+54	LT	POLECAT CREEK RD													421					
38+62	40+86	RT	POLECAT CREEK RD					239													
38+62		26' RT	POLECAT CREEK RD																	1	
38+62		35' RT	POLECAT CREEK RD							1				1							
38+63		12' LT	POLECAT CREEK RD														1				
38+65		26' RT	POLECAT CREEK RD															1			
38+69	38+69	LT	POLECAT CREEK RD					10													
38+69	38+69	LT/RT	POLECAT CREEK RD	44.00	4.00	4.00	27		61					44							
38+69		27' LT	POLECAT CREEK RD																		
38+94		26' LT	POLECAT CREEK RD									1									
40+66	41+52	RT/LT	POLECAT CREEK RD	62.00	4.00	6.00	96		134					120							
40+86		42' RT	POLECAT CREEK RD							1											
40+87		47' RT	POLECAT CREEK RD									1									
40+94		46' RT	POLECAT CREEK RD							1											
41+21	42+10	RT	GOLDENROD DRIVE												91						
41+49		68' LT	POLECAT CREEK RD							1											
41+52		68' LT	POLECAT CREEK RD																1		
41+54		77' LT	POLECAT CREEK RD																1		
TOTALS							83	10	434	1	4	1	2	5	164	91	421	1	3	1	2

CURB, GUTTER AND CURB AND GUTTER SCHEDULE

STATION	STATION	OFFSET	STREET	60600605	60602800	60604400	60605000	60609200	60618300	X6062400
				CONCRETE CURB, TYPE B	CONCRETE GUTTER, TYPE B	COMBINATION CONCRETE CURB AND GUTTER, TYPE B-6.18	COMBINATION CONCRETE CURB AND GUTTER, TYPE B-6.24	COMBINATION CONCRETE CURB AND GUTTER, TYPE M-6.12	CONCRETE MEDIAN SURFACE, 4 INCH	CONCRETE GUTTER (SPECIAL)
				FOOT	FOOT	FOOT	FOOT	FOOT	SQ FT	FOOT
35+39.00	39+60.00	LT	POLECAT CREEK RD			421				
35+39.00	39+60.00	RT	POLECAT CREEK RD			421				
36+90.43	37+03.97	LT	POLECAT CREEK RD				25			
37+33.78	37+45.90	LT	POLECAT CREEK RD				24			
39+60.00	124+46.33	LT	POLECAT CREEK RD			245				
39+60.00	126+32.06	RT	POLECAT CREEK RD			271				
40+35.13	40+40.05	LT	POLECAT CREEK RD				14			
40+74.45	40+81.46	LT	POLECAT CREEK RD				17			
40+78.44	40+97.06	LT	POLECAT CREEK RD	19						
41+26.05	41+40.27	RT	POLECAT CREEK RD	14						
41+33.35	41+43.37	RT	POLECAT CREEK RD	9						
41+50.35	41+62.57	LT	POLECAT CREEK RD	14						
41+67.19	124+46.33	LT	POLECAT CREEK RD	32						
124+40.42	124+40.42	RT	IL ROUTE 4	12						
125+63.97	45+00.00	RT	GOLDENROD DR			317				
123+55.59	45+00.00	LT	GOLDENROD DR			328				
42+21.78	42+27.11	RT	GOLDENROD DR	9						
42+34.37	42+45.94	RT	GOLDENROD DR	14						
42+58.97	41+67.43	RT	GOLDENROD DR	14						
42+69.33	42+77.01	LT	GOLDENROD DR	9						
42+72.30	42+83.62	RT	GOLDENROD DR	14						
42+73.06	42+82.22	LT	GOLDENROD DR	10						
45+00.00	48+50.00	LT	GOLDENROD DR			350				
45+00.00	48+50.00	RT	GOLDENROD DR			350				
100+86.60	110+61.80	LT	IL ROUTE 4			46				
119+01.00	119+44.40	LT	IL ROUTE 4			44				
119+01.00	121+31.91	RT	IL ROUTE 4			231				
119+97.40	122+70.00	LT	IL ROUTE 4			273				
122+06.41	122+70.00	RT	IL ROUTE 4			64				
122+70.00	123+55.59	LT	IL ROUTE 4			86				
122+70.00	124+46.33	RT	IL ROUTE 4			177				
200+49.73	119+44.40	RT	CIRCLE DR			30				
200+49.73	119+97.40	LT	CIRCLE DR			32				
122+06.41	700+69.28	LT	CHURCH ST				101			
121+31.91	701+50.00	RT	CHURCH ST						93	
700+93.32	700+96.82	LT	CHURCH ST			46				
700+96.82	701+50.00	LT	CHURCH ST							54
700+25.92	700+69.10		CHURCH ST				108		399	
			SCHOOL PARKING LOT				31			
TIFF FUNDS SUBTOTALS				0	937	46	101	108	399	147
ROADWAY SUBTOTALS				170	0	2,703	111	0	0	0
TOTALS				170	937	2,749	212	108	399	147

\* DENOTES QUANTITIES USED FOR TIFF FUNDS

TEMPORARY PAVEMENT SCHEDULE

STATION	STATION	OFFSET	STREET	LENGTH	WIDTH	40600990
						TEMPORARY RAMP
				FOOT	FOOT	SQ YD
STAGE 1	200+61.85	200+66.85	CIRCLE DRIVE	5.00	24.00	14
STAGE 2	35+00.00	35+05.00	POLECAT CREEK RD	5.00	20.00	12
	36+72.53	36+77.53	POLECAT CREEK RD	5.00	30.00	17
	37+58.80	37+63.80	POLECAT CREEK RD	5.00	36.00	20
	40+20.73	40+25.73	POLECAT CREEK RD	5.00	36.00	20
	40+91.38	40+96.38	POLECAT CREEK RD	5.00	40.00	23
	701+45.00	701+50.00	CHURCH STREET	5.00	24.00	14
	122+00.00		RT SCHOOL PARKING LOT	5.00	48.00	27
STAGE 3	119+01.00	119+06.00	IL ROUTE 4	5.00	44.50	25
	130+73.00	130+78.00	IL ROUTE 4	5.00	24.00	14
TIFF FUNDS SUBTOTAL						53
ROADWAY SUBTOTAL						133
TOTAL						186

\* DENOTES QUANTITIES USED FOR TIFF FUNDS

PERMANENT SURVEY MARKERS SCHEDULE

STATION	OFFSET	STREET	66700205
			PERMANENT SURVEY MARKERS, TYPE I
			EACH
119+01	CL	IL ROUTE 4	1
127+61	CL	IL ROUTE 4	1
130+78	CL	IL ROUTE 4	1
TIFF FUNDS SUBTOTAL			1
ROADWAY SUBTOTAL			2
TOTAL			3

\* DENOTES QUANTITIES USED FOR TIFF FUNDS

DRAINAGE STRUCTURE AND UTILITY ADJUSTMENTS SCHEDULE

STATION	OFFSET	STREET	56106000	56106200	56106300	56300300	60265700	X6026050
			ADJUSTING WATER MAIN 2"	ADJUSTING WATER MAIN 4"	ADJUSTING WATER MAIN 6"	ADJUSTING WATER SERVICE LINES	VALVE VAULTS TO BE ADJUSTED	SANITARY MANHOLES TO BE ADJUSTED
			FOOT	FOOT	FOOT	FOOT	EACH	EACH
35+50	10' LT	POLECAT CREEK RD			30			
36+35	12' LT	POLECAT CREEK RD			30			
37+65	12' LT	POLECAT CREEK RD			30			
52+27	19' LT	GOLDENROD DR						1
122+20	36' LT	IL ROUTE 4						
124+10	35' LT	IL ROUTE 4			65			
125+50	42' LT	IL ROUTE 4	30					
120+18	23' LT	IL ROUTE 4				20		
120+24	23' RT	IL ROUTE 4				20		
120+29	23' LT	IL ROUTE 4				20		
120+43	23' RT	IL ROUTE 4				20		
122+61	39' LT	IL ROUTE 4					1	
605+00	14' RT	MAIN STREET						1
604+88	28' RT	MAIN STREET						1
604+71	12' RT	MAIN STREET						1
TIFF FUNDS SUBTOTALS			0	0	0	80	0	0
ROADWAY SUBTOTALS			30	95	90	0	4	1
TOTALS			30	95	90	80	4	1

\* DENOTES QUANTITIES USED FOR TIFF FUNDS

FILE NAME : D672095-shl-schedules.dgn  
 USER NAME : j\_m\_oampbell  
 DESIGNED - JAC  
 DRAWN - JTC  
 CHECKED - JAC  
 DATE - 2/19/2016

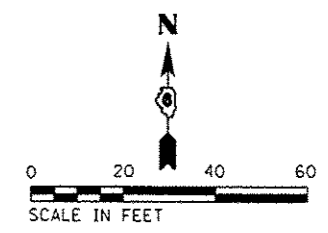
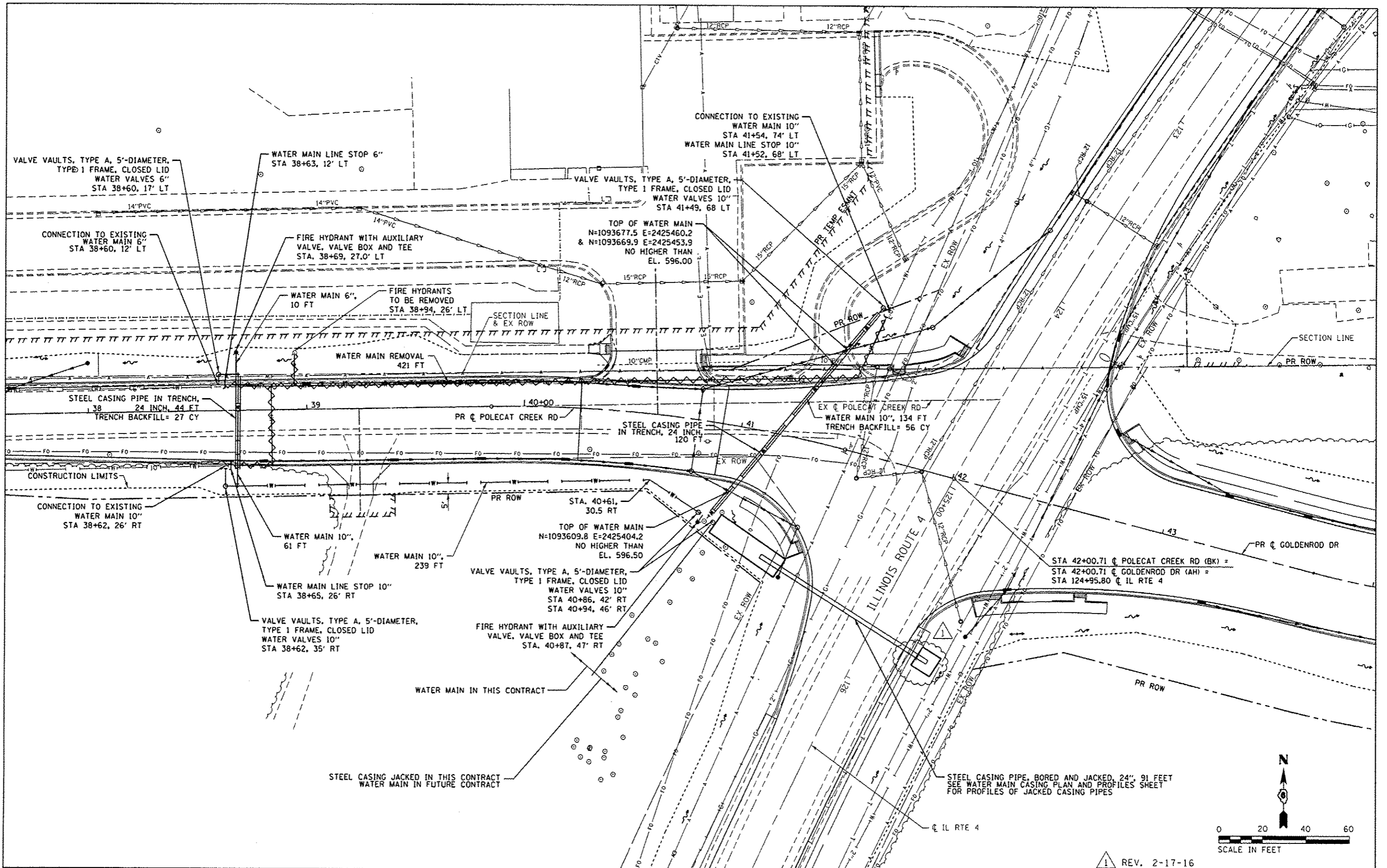
REVISIONS:  
 REVISED -  
 REVISED -  
 REVISED -  
 REVISED -

STATE OF ILLINOIS  
 DEPARTMENT OF TRANSPORTATION

SCHEDULE OF QUANTITIES

SCALE: NONE SHEET 3 OF 13 SHEETS STA. TO STA.

F.A.P. RITE. 662 SECTION D6 2015-1 HSRR COUNTY SANGAMON TOTAL SHEETS 172 SHEET NO. 24 CONTRACT NO. 72095 ILLINOIS FED. AID PROJECT



REV. 2-17-16

FILE NAME : 0672095-ah-water-Gold\_01.dgn  
 #MODELNAME# 0672095-ah-water-Gold\_01.dgn 2/17/2016 1:13:32 PM

USER NAME : jim\_oampbell  
 PLOT SCALE : 48.0000 1" = 48'  
 PLOT DATE : 2/17/2016

DESIGNED - JAC	REVISED - DCS 2-17-2016
DRAWN - JTC	REVISED -
CHECKED - JAC	REVISED -
DATE -	REVISED -

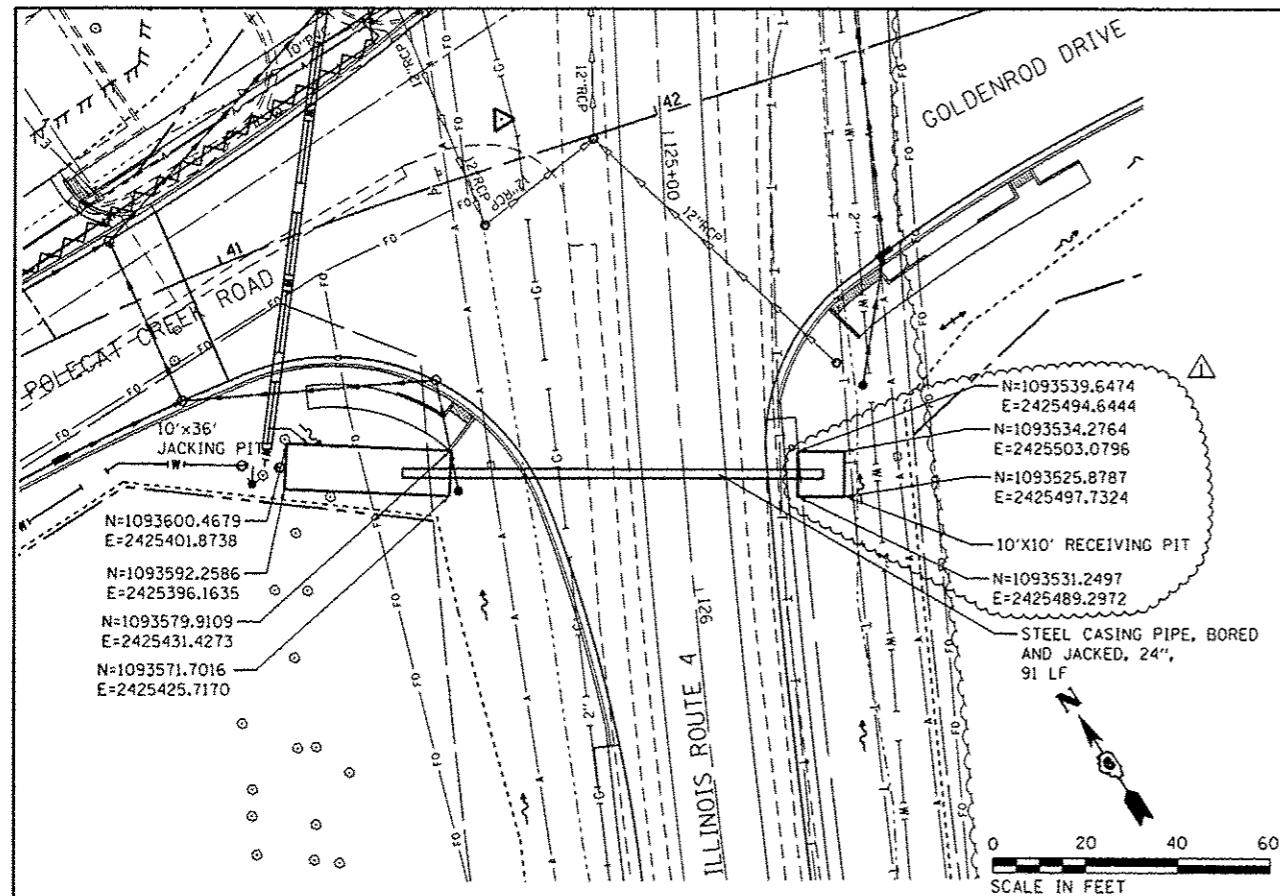
**STATE OF ILLINOIS**  
**DEPARTMENT OF TRANSPORTATION**

**WATER MAIN PLANS**  
**POLECAT CREEK ROAD / GOLDENROD DRIVE**

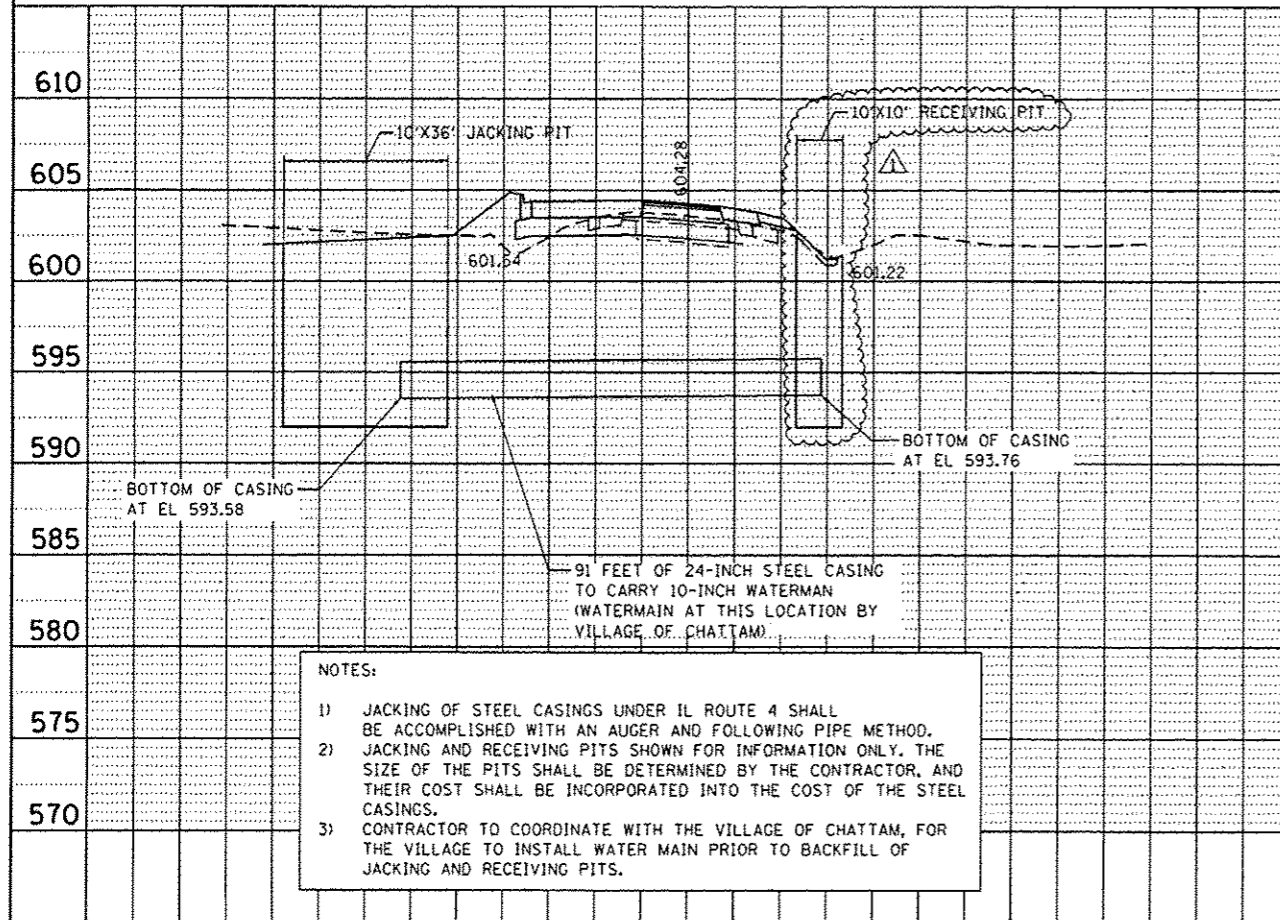
SCALE: 1" = 20' SHEET 1 OF 3 SHEETS STA. 37+62 TO STA. 44+04

F.A.P. RTE. 662	SECTION D6 2015-1 HSRR	COUNTY SANGAMON	TOTAL SHEETS 172	SHEET NO. 78
			CONTRACT NO. 72G95	
ILLINOIS FED. AID PROJECT				

DATE	
BY	
DESIGNED	
PLANNED	
NOTED	
ALIGNED	
CHECKED	
APPROVED	
NOTE BOOK NO.	
ADD. FILE NAME	



DATE	
BY	
DESIGNED	
PLANNED	
NOTED	
ALIGNED	
CHECKED	
APPROVED	
NOTE BOOK NO.	
ADD. FILE NAME	



REV. 2-17-2016

FILE NAME : D672095-shr-water_casing_P_and_P.dgn	USER NAME : jim_campbell	DESIGNED - JAC	REVISED - DCS 2-17-2016
		DRAWN - JTC	REVISED -
		CHECKED - JAC	REVISED -
		DATE -	REVISED -

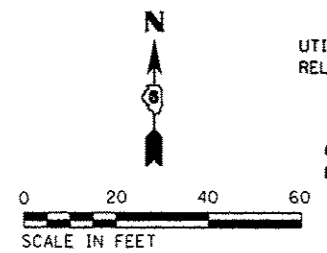
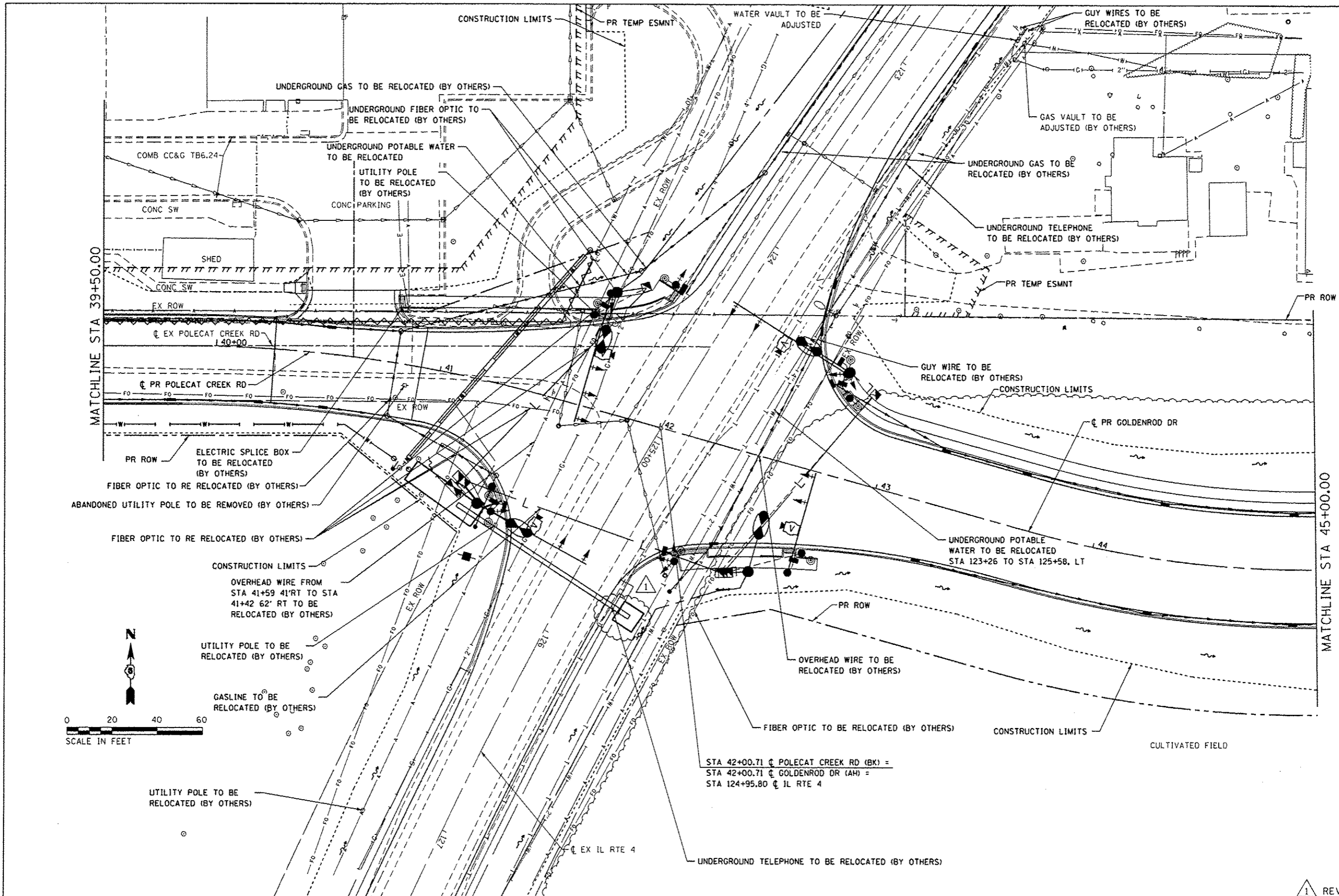
STATE OF ILLINOIS  
DEPARTMENT OF TRANSPORTATION

WATER MAIN PLANS  
WATER MAIN CASING PLAN AND PROFILE

F.A.P. RTE. 662	SECTION 06 2015-1 HSRR	COUNTY SANGAMON	TOTAL SHEETS 172	SHEET NO. 79
			CONTRACT NO. 72095	
ILLINOIS FED. AID PROJECT				

SCALE: SHEET 2 OF 3 SHEETS STA. TO STA.

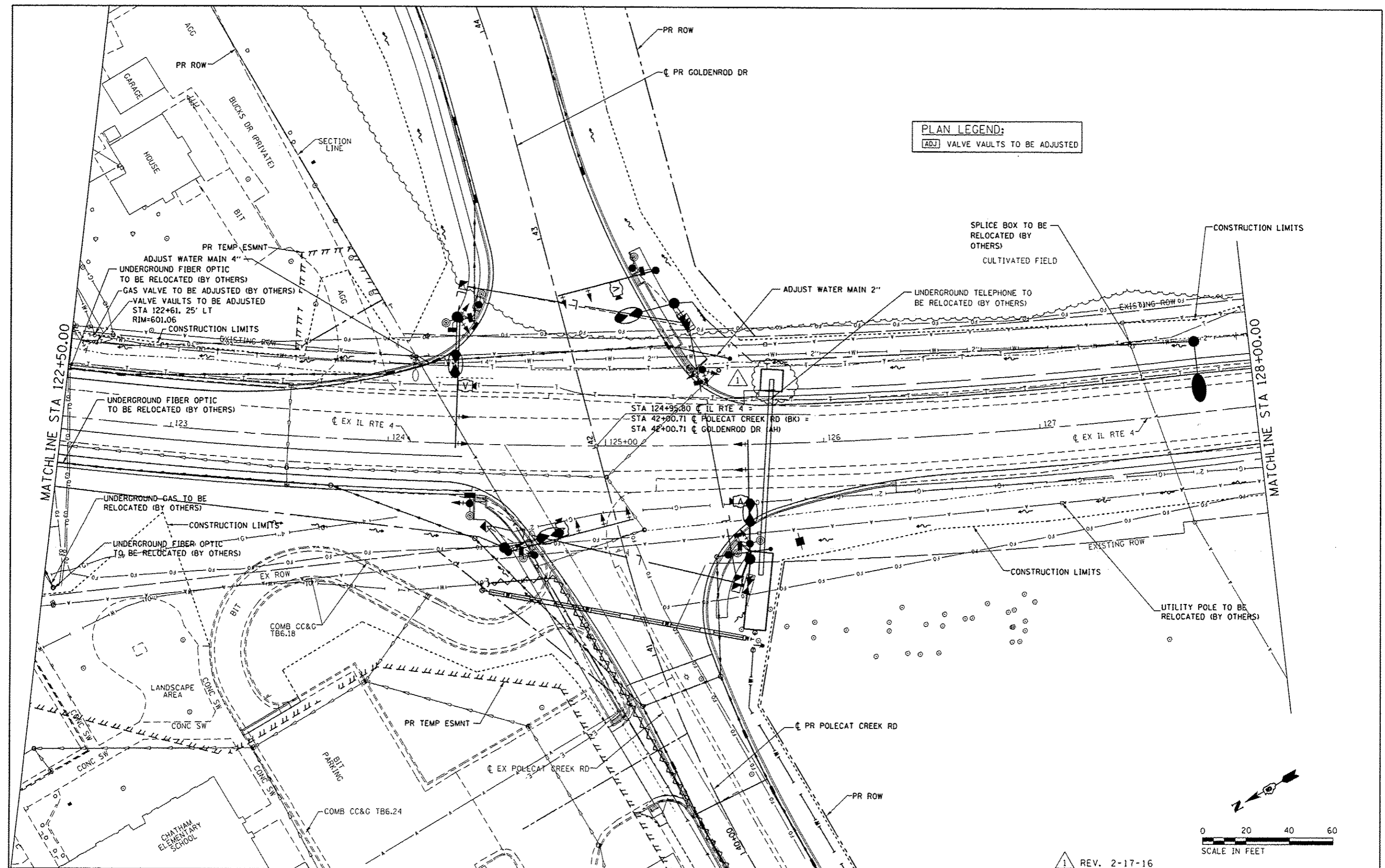
D672095-shr-water\_casing\_P\_and\_P.dgn 2/17/2016 1:13:33 PM



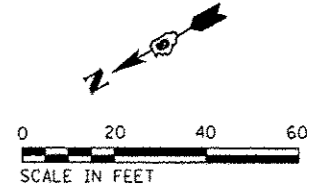
STA 42+00.71 C POLECAT CREEK RD (BK) =  
 STA 42+00.71 C GOLDENROD DR (AH) =  
 STA 124+95.80 C IL RTE 4

REV. 2-17-16

FILE NAME = 0672095-uh-utilities-Gold.02.dgn MODEL NAME = 0672095-uh-utilities-Gold.02.dgn 2/17/2016 1:13:53 PM	USER NAME = jim_campbell	DESIGNED - JAC	REVISED - DCS 2-17-2016	<b>STATE OF ILLINOIS</b> <b>DEPARTMENT OF TRANSPORTATION</b>	<b>UTILITY PLANS</b> <b>POLECAT CREEK ROAD / GOLDENROD DRIVE</b>	F.A.P. RTE. = 662	SECTION = DG 2015-1 HSRR	COUNTY = SANGAMON	TOTAL SHEETS = 172	SHEET NO. = 82
	PLOT SCALE = 1/8" = 10'-0"	CHECKED - JAC	DATE -			SCALE: 1" = 20'	SHEET 2 OF 10 SHEETS	STA. 39+50.00 TO STA. 45+00.00	CONTRACT NO. 72695	



**PLAN LEGEND:**  
 [ADJ] VALVE VAULTS TO BE ADJUSTED



1 REV. 2-17-16

FILE NAME : DG72095-shr-utilities-ILRTE4.dwg	USER NAME : jim.campbell	DESIGNED - JAC	REVISED - DCS 2-17-2016
		DRAWN - PSB	REVISED -
		CHECKED - JAC	REVISED -
		DATE -	REVISED -

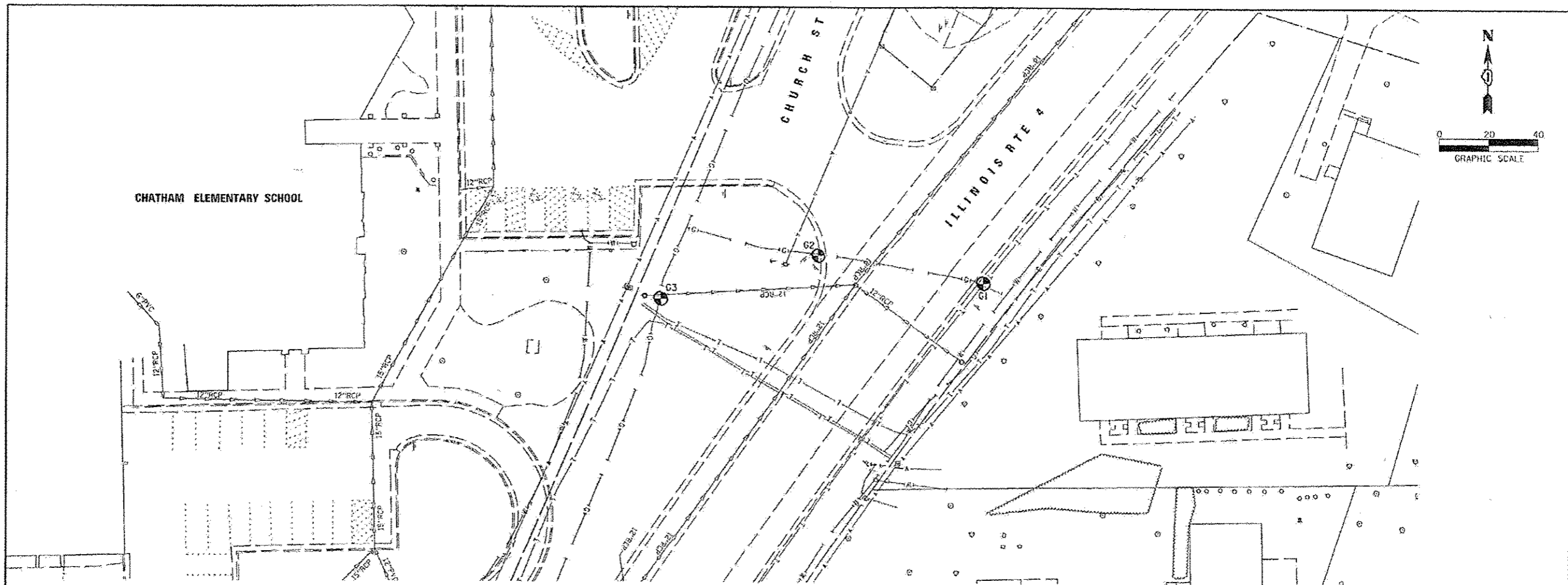
**STATE OF ILLINOIS  
 DEPARTMENT OF TRANSPORTATION**

**UTILITY PLANS  
 IL RTE 4**

SCALE: 1" = 20' SHEET 6 OF 10 SHEETS STA. 122+50.00 TO STA. 128+00.00

F.A.P. RTE. 662	SECTION D6 2015-1 HSR	COUNTY SANGAMON	TOTAL SHEETS 172	SHEET NO. 86
				CONTRACT NO. 72095
ILLINOIS FED. AID PROJECT				





**BENCHMARKS**

TBM "06"  
STA. 38+94, 26' LT. (GOLDENROD DR)  
CHISELED "+" SE BOLT ON FIRE  
HYDRANT  
ELEV=606.56

TBM "07"  
STA. 609+52, 25' LT. (MAIN ST)  
CHISELED "+" SE BOLT ON FIRE  
HYDRANT  
ELEV=604.19

TBM "08"  
STA. 54+75, 19' RT. (GOLDENROD DR)  
CHISELED "+" SE BOLT ON FIRE  
HYDRANT  
ELEV=603.03

**LEGEND**

⊙ VERIFIED UTILITY LOCATION

**VERIFIED UTILITY INFORMATION - SUE QUALITY LEVEL A**

Street	Test Hole Number	Northing	Easting	In Pavement/In grass	Utility Type	Pipe Material	Depth	Top of Utility Elevation	Remarks
RTE 4	G1	1093873.007	2425709.768	In Grass	2" gas	4 5/8" yellow plastic gas pipe	2.86'	599.30	Actual gas main found in shoulder NE of marked location. Original mark was 2" gas. Ameron has replaced gas in this area in 2015, new 4 5/8" line was found.
RTE 4	G2	1093884.018	2425643.324	In grass	2" gas	4 5/8" yellow plastic gas pipe	3.20'	599.20	Actual gas main found in shoulder 15' N of marked location. Original mark was 2" gas. Ameron has replaced gas in this area in 2015, new 4 5/8" line was found.
RTE 4	G3	1093866.383	2425580.219	In grass	2" gas	4 5/8" yellow plastic gas pipe	3.15'	597.91	Actual gas main found in grass. Original mark was 2" gas. Ameron has replaced gas in this area in 2015, new 4 5/8" line was found.



**ENGINEERS STATEMENT**

I, WILLIAM J. SLEEMAN, A PROFESSIONAL ENGINEER IN THE STATE OF ILLINOIS DO HEREBY STATE THAT THE INFORMATION SHOWN IS A TRUE AND CORRECT REPRESENTATION OF THE UTILITY LOCATE DONE UNDER MY SUPERVISION.

UTILITY(IES) SHOWN HEREON HAVE BEEN INVESTIGATED BY BENTON & ASSOCIATES, INC. IN ACCORDANCE WITH SUE INDUSTRY STANDARDS, QUALITY LEVEL A (QLA) AS INDICATED ON DRAWING, QUALITY LEVEL B (QLB) AND QUALITY LEVEL C (QLC) WERE PROVIDED BY THE SPECIFIC UTILITY COMPANIES BY FIELD DESIGNATION AND SURVEYED BY BENTON & ASSOCIATES, INC.

FIELD WORK WAS PERFORMED ON FEBRUARY 1, 2016

*William J. Sleeman* 2/15/2016  
WILLIAM J. SLEEMAN  
ILLINOIS PROFESSIONAL ENGINEER #062-048685  
LICENSE EXPIRES 11/30/17

FILE NAME =	USER NAME = jmorris	DESIGNED - J. MORRIS	REVISED -
P:\13\021\Design\Plans\Chatham Locate\4876\Locate 4 Utility Locate.dwg		DRAWN - S. WEBER	REVISED -
Default	PLOT SCALE = 48.0000 / 1 in.	CHECKED - M. McEVER	REVISED -
	PLOT DATE = 2/15/2016	DATE - FEBRUARY 2016	REVISED -

**STATE OF ILLINOIS  
DEPARTMENT OF TRANSPORTATION**

**CITY OF CHATHAM UTILITY LOCATE  
DOT CONTRACT#2440769R**

F.A.P. RTE.	SECTION	COUNTY	TOTAL SHEETS	SHEET NO.
662	06 2015-1A HSRR	SANGAMON	172	90A
CONTRACT NO. 72111				

SCALE: 1"=20' SHEET 1 OF 1 SHEETS STA. TO STA.

**STATE OF ILLINOIS  
DEPARTMENT OF TRANSPORTATION**

**S.U.E. INVESTIGATION OF UNDERGROUND UTILITIES**

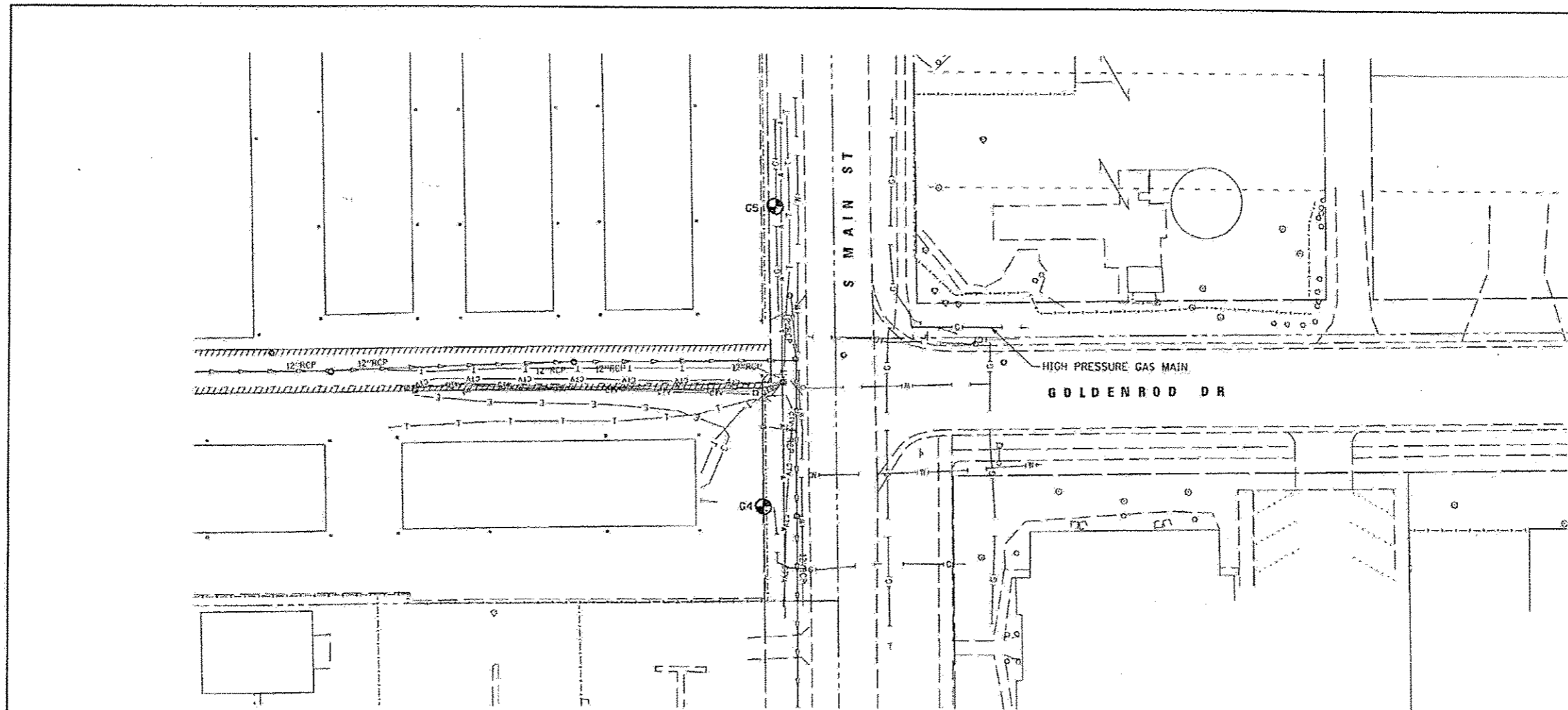
F.A.P. RTE.	SECTION	COUNTY	TOTAL SHEETS	SHEET NO.
662	06 2015-1 HSRR	SANGAMON	172	90A
CONTRACT NO. 72695				

SCALE: NA SHEET 1 OF 2 SHEETS STA. TO STA.

ILLINOIS FED. AID PROJECT

FILE NAME = 0672095-ah1-SUE.dgn  
USER NAME = jim.compbell  
DESIGNED - JAC  
DRAWN - JTC  
CHECKED - JAC  
DATE -  
PLOT SCALE = 2.0000 / 1 in.  
PLOT DATE = 2/17/2016

▲ SHEET ADDED 2-22-16



**BENCHMARKS**

TBM "06"  
STA. 38+94, 26' LT. (GOLDENROD DR)  
CHISELED "4" SE BOLT ON FIRE  
HYDRANT  
ELEV=606.56

TBM "07"  
STA. 609+52, 25' LT. (MAIN ST)  
CHISELED "4" SE BOLT ON FIRE  
HYDRANT  
ELEV=604.19

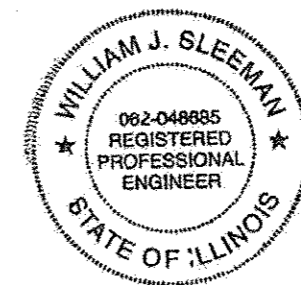
TBM "08"  
STA. 54+75, 19' RT. (GOLDENROD DR)  
CHISELED "4" SE BOLT ON FIRE  
HYDRANT  
ELEV=603.03

**LEGEND**

⊙ VERIFIED UTILITY LOCATION

**VERIFIED UTILITY INFORMATION - SUE QUALITY LEVEL A**

Street	Test Hole Number	Northing	Easting	In Pavement/In grass	Utility Type	Pipe Material	Depth	Top of Utility Elevation	Remarks
MAIN	C4	1093717.246	2426666.974	Gravel	5/8" gas	5/8" plastic	2.03'	598.74	none
MAIN	C5	1093821.505	2426670.002	Grass	2" gas	2" orange plastic	3.30'	598.01	none



**ENGINEERS STATEMENT**

I, WILLIAM J. SLEEMAN, A PROFESSIONAL ENGINEER IN THE STATE OF ILLINOIS DO HEREBY STATE THAT THE INFORMATION SHOWN IS A TRUE AND CORRECT REPRESENTATION OF THE UTILITY LOCATE DONE UNDER MY SUPERVISION.

UTILITY(IES) SHOWN HEREON HAVE BEEN INVESTIGATED BY BENTON & ASSOCIATES, INC. IN ACCORDANCE WITH SUE INDUSTRY STANDARDS, QUALITY LEVEL A (QLA) AS INDICATED ON DRAWING, QUALITY LEVEL B (QLB) AND QUALITY LEVEL C (QLC) WERE PROVIDED BY THE SPECIFIC UTILITY COMPANIES BY FIELD DESIGNATION AND SURVEYED BY BENTON & ASSOCIATES, INC.

FIELD WORK WAS PERFORMED ON FEBRUARY 1, 2016

*William J. Sleeman*  
2/15/2016

WILLIAM J. SLEEMAN  
ILLINOIS PROFESSIONAL ENGINEER #062-048685  
LICENSE EXPIRES 11/30/17

FILE NAME: P:\13\JBD\Design\10ns\Chatham Locate\4978\SL\goldenrod utility locate map.dgn	USER NAME: j_morris	DESIGNED: J. MORRIS	REVISED: -	STATE OF ILLINOIS DEPARTMENT OF TRANSPORTATION	CITY OF CHATHAM UTILITY LOCATE DOT CONTRACT#2440769R	F.A.P. RTE. 662	SECTION DB 2015-1A HSRR	COUNTY SANGAMON	TOTAL SHEETS 172	SHEET NO. 908	
Default	PLOT SCALE: 40.0000' / 1" /	CHECKED: M. McEvoy	REVISED: -			SCALE: 1"=20'	SHEET 1 OF 1 SHEETS	STA. TO STA.	CONTRACT NO. 72111		ILLINOIS FED. AID PROJECT
	PLOT DATE: 2/15/2016	DATE: FEBRUARY 2016	REVISED: -								

FILE NAME: D:\2015-ah-SUE.dgn	USER NAME: j_m.campbell	DESIGNED: JAC	REVISED: -	STATE OF ILLINOIS DEPARTMENT OF TRANSPORTATION	S.U.E. INVESTIGATION OF UNDERGROUND UTILITIES	F.A.P. RTE. 662	SECTION D6 2015-1 HSRR	COUNTY SANGAMON	TOTAL SHEETS 172	SHEET NO. 908	
#MODELNAME:	Default	PLOT SCALE: 2.0000' / 1" /	CHECKED: JAC			REVISED: -	SCALE: NA	SHEET 2 OF 2 SHEETS	STA. TO STA.	CONTRACT NO. 72095	
		PLOT DATE: 2/17/2016	DATE: -			REVISED: -					

▲ SHEET ADDED 2-22-16