

STATE OF ILLINOIS
DEPARTMENT OF TRANSPORTATION
DIVISION OF HIGHWAYS

**PROPOSED
HIGHWAY PLANS**

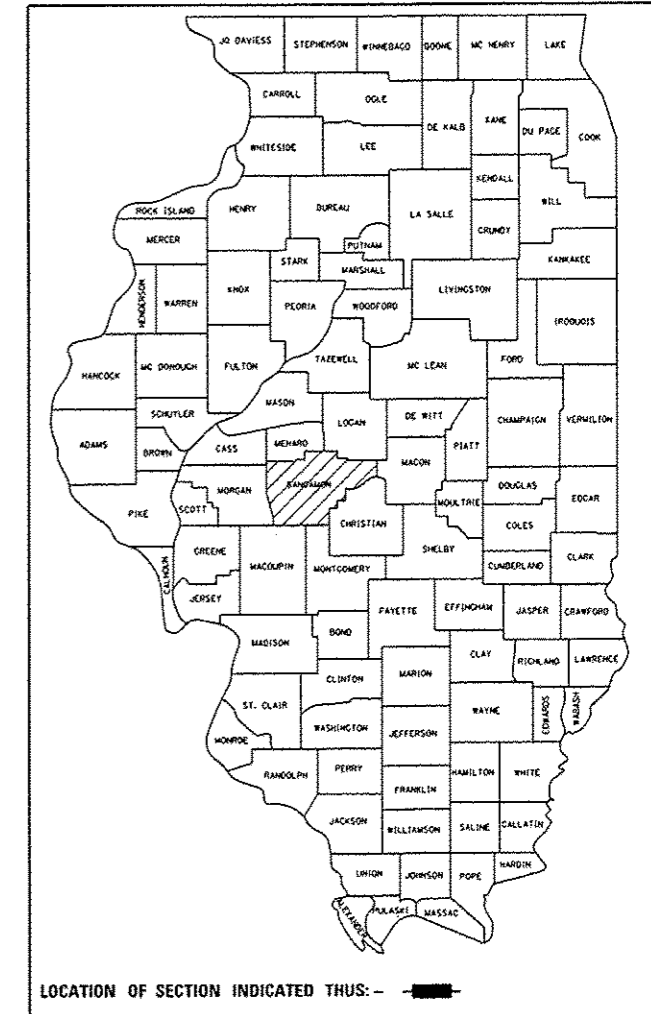
VARIOUS ROUTES
SECTION D6 BDGE DK SEALING 2016-1
SANGAMON COUNTY
BRIDGE DECK SEALING

FOR INDEX OF SHEETS, SEE SHEET NO. 2

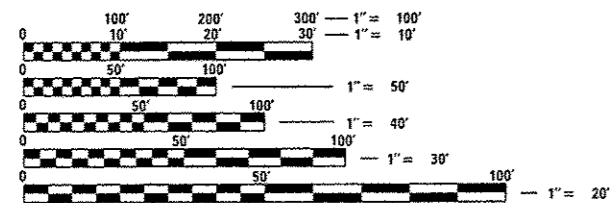
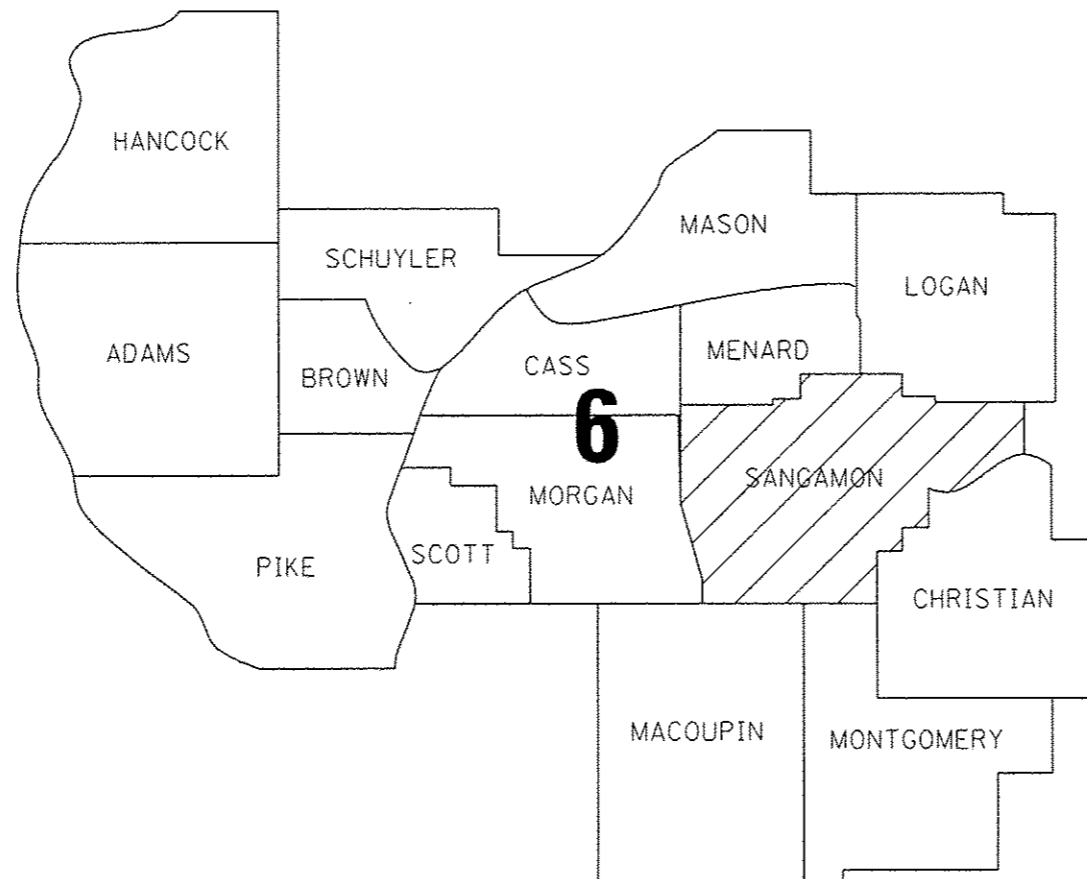
F.A. RTE.	SECTION	COUNTY	TOTAL SHEETS	SHEET NO.
*VAR	***	SANGAMON	7	1
		ILLINOIS	CONTRACT NO. 72101	

*** D6 BDGE DK SEALING 2016-1

D-96-008-16



C-96-008-16



FULL SIZE PLANS HAVE BEEN PREPARED USING STANDARD ENGINEERING SCALES. REDUCED SIZED PLANS WILL NOT CONFORM TO STANDARD SCALES. IN MAKING MEASUREMENTS ON REDUCED PLANS, THE ABOVE SCALES MAY BE USED.

J.U.L.I.E.
JOINT UTILITY LOCATION INFORMATION FOR EXCAVATION
1-800-892-0123
OR 811

PROJECT ENGINEER: (217) 785-9046 JAY WAVERING
TEAM ENGINEER: (217) 524-0472 VICTOR YOUNG

CONTRACT NO. 72101

STATE OF ILLINOIS
DEPARTMENT OF TRANSPORTATION
DIVISION OF HIGHWAYS

SUBMITTED *December 3, 2015*

Roger R. Ditchell, Jr.
DEPUTY DIRECTOR OF HIGHWAYS, REGION ENGINEER

Jan 29, 2016
Mawreen M. Addis, PE
ENGINEER OF DESIGN AND ENVIRONMENT

Jan 29, 2016
Omer Osman, PE
DIRECTOR OF HIGHWAYS, CHIEF ENGINEER

PRINTED BY THE AUTHORITY
OF THE STATE OF ILLINOIS

INDEX OF SHEETS

1. COVER SHEET
2. INDEX, GENERAL NOTES, STANDARDS, & SIGNATURES
3. SUMMARY OF QUANTITIES
4. SCHEDULE OF QUANTITIES
- 5.-6. BRIDGE LOCATION MAPS
7. BRIDGE DETAIL SHEET

HIGHWAY STANDARDS

- 000001-06
- 001006
- 701201-04
- 701400-08
- 701406-09
- 701411-09
- 701422-07
- 701446-06
- 701501-06
- 701901-04

GENERAL NOTES

THE CONCRETE SEALER SHALL BE APPLIED TO THE ENTIRE TOP SURFACE OF THE DECK, INCLUDING THE INSIDE FACES AND TOPS OF THE PARAPETS.
 WATER BASED CONCRETE SEALERS WILL NOT BE ALLOWED.
 TO PREVENT THE DECK SURFACE TREATMENT FROM BEING APPLIED TO THE EXISTING PAVEMENT MARKINGS, THE EXISTING PAVEMENT MARKINGS SHALL BE TEMPORARILY COVERED PRIOR TO APPLICATION. THE TEMPORARY COVERING SHALL BE REMOVED AFTER APPLICATION OF THE DECK SURFACE TREATMENT AND PRIOR TO OPENING TO TRAFFIC. THE COST SHALL BE INCLUDED WITH BRIDGE DECK CONCRETE SEALER.

COMMITMENTS

COMMITMENTS ARE NOT TO BE ALTERED WITHOUT THE WRITTEN APPROVAL OF ALL PARTIES TO WHICH THE COMMITMENT WAS MADE.
 1. THE RESIDENT ENGINEER SHALL CONTACT STUDIES AND PLANS CONCERNING ANY MAJOR PLAN CHANGE, TO MAKE SURE NO PREVIOUS COMMITMENTS (NOT LISTED) WERE MADE AFFECTING THE DESIGN AND ALLOW AN IMPROVED DESIGN FOR FUTURE PROJECTS.

DISTRICT SIX			
EXAMINED	<i>November 17th</i>	20	<i>15</i>
<i>Allen C. Wispungu</i>			
OPERATIONS ENGINEER			
EXAMINED	<i>November 17</i>	20	<i>15</i>
<i>Ron Chamberlain</i>			
PROJECT IMPLEMENTATION ENGINEER			
EXAMINED	<i>November 18</i>	20	<i>15</i>
<i>Jeffrey P. Mize</i>			
PROGRAM DEVELOPMENT ENGINEER			

FILE NAME * USER NAME * pererave DESIGNED - CHECKED - DATE -				REVISED - REVISIONS - REVISIONS - REVISIONS -				STATE OF ILLINOIS DEPARTMENT OF TRANSPORTATION				INDEX OF SHEETS, GENERAL NOTES AND COMMITMENTS				F.A. RTE. SECTION COUNTY SANGAMON		TOTAL SHEETS 7		SHEET NO. 2	
PLOT SCALE * 40.0000' / 1"				PLOT DATE * 12/1/2015				SCALE:				SHEET OF SHEETS STA. TO STA.				ILLINOIS FED. AID PROJECT					

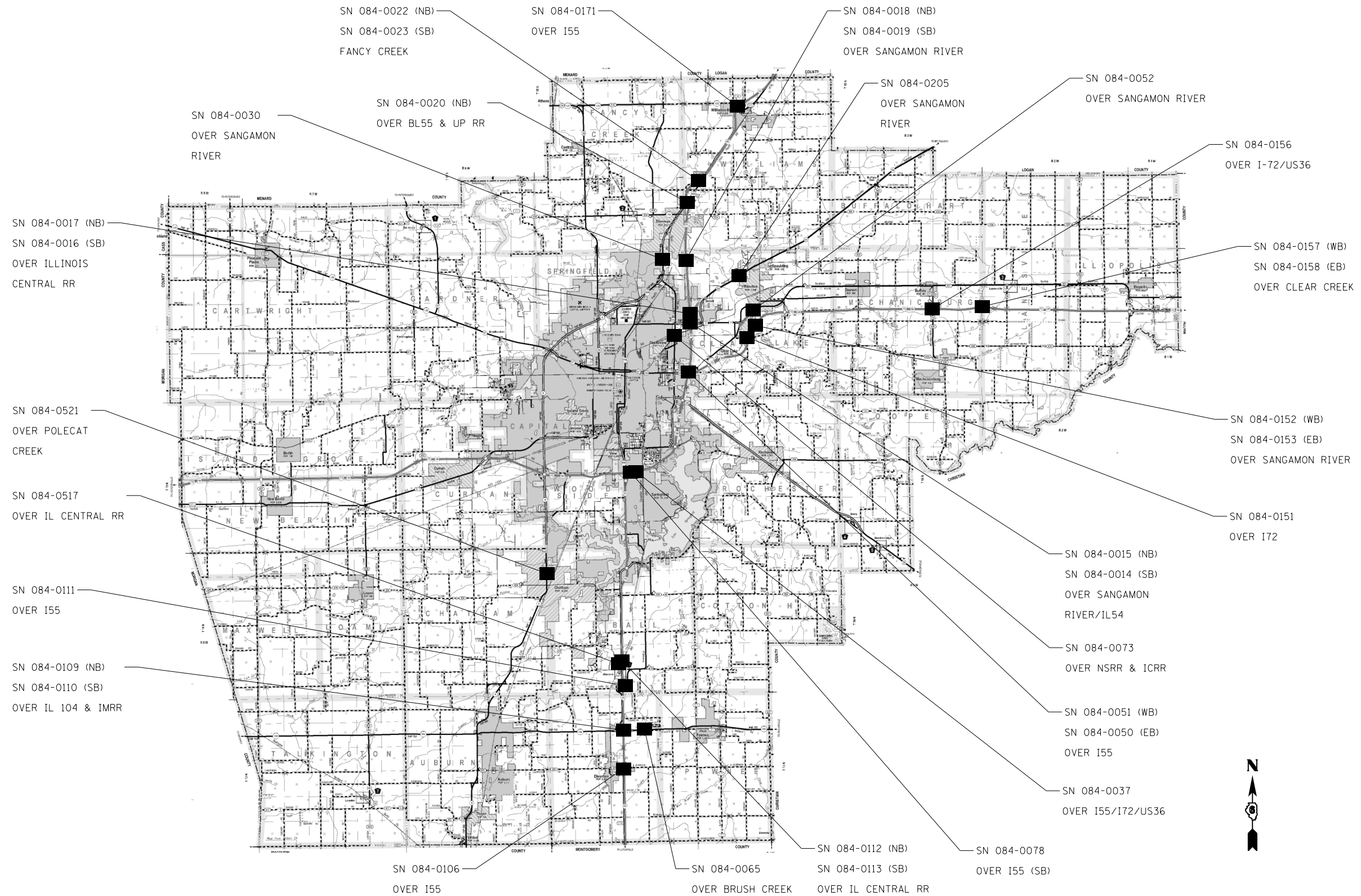
CODE NO.	ITEM	UNIT	TOTAL QUANTITY	RURAL	URBAN
				CONSTRUCTION CODE	
				6-00647-0250 100% STATE BRIDGE 0014	6-00647-0260 100% STATE BRIDGE 0014
				OUTSIDE MPO	INSIDE MPO
67100100	MOBILIZATION	LSUM	1	0.5	0.5
70100320	TRAFFIC CONTROL AND PROTECTION, STANDARD 701422	LSUM	1		1
70100420	TRAFFIC CONTROL AND PROTECTION, STANDARD 701411	EACH	9	2	7
70100450	TRAFFIC CONTROL AND PROTECTION, STANDARD 701201	LSUM	1	0.5	0.5
70100700	TRAFFIC CONTROL AND PROTECTION, STANDARD 701406	LSUM	1	0.5	0.5
70100815	TRAFFIC CONTROL AND PROTECTION, STANDARD 701446	LSUM	1	0.5	0.5
70102620	TRAFFIC CONTROL AND PROTECTION, STANDARD 701501	LSUM	1		1
X7010410	SPEED DISPLAY TRAILER	CAL MO	4	2	2
X5870015	BRIDGE DECK CONCRETE SEALER	SQ FT	1083375	144969	938406

FILE NAME :	USER NAME : Veronika	DESIGNED -	REVISED -	STATE OF ILLINOIS DEPARTMENT OF TRANSPORTATION	SUMMARY OF QUANTITIES				F.A. RTE.	SECTION	COUNTY	TOTAL SHEETS	SHEET NO.
Documents\1007 Offices\Districts 6\Projects\0671\BRANDON\0600\sheet\0672\01-shc-500.dwg		CHECKED -	REVISED -		SCALE:	SHEET	OF	SHEETS	STA.	TO STA.	SANGAMON	7	3
PLOT SCALE : 100.0000 1/16 in.		DATE -	REVISED -						CONTRACT NO.	72101			
PLOT DATE : 12/9/2015									ILLINOIS FED. AID PROJECT				

OUTSIDE SPRINGFIELD MPO									
SN	County	Facility Carried	Feature Crossed	Location	Deck Length (FT)	Deck Width (FT)	Parapet (FT)	Parapet (FT)	Deck Area (SQ FT)
084-0065	Sangamon	IL 104	BRUSH CREEK	.9M E I-55(W PAWNEE)	146.5	433.3	3.77	3.77	7448
084-0106	Sangamon	DIVERNON RD/ FAS 625	I-55	3M N MONTGOMERY CO.	250.3	72.0	3.77	3.77	19909
084-0109	Sangamon	I-55 (NB)	IL 104 / I & M RR	1.5M N DIVERNON INT	281.0	59.1	3.77	3.77	18726
084-0110	Sangamon	I-55 (SB)	IL 104 / I & M RR	1.5M N DIVERNON INT	281.0	67.1	3.77	3.77	20973
084-0111	Sangamon	HORSE FARM RD.	I-55	1.8M N IL 104	288.8	62.0	3.77	3.77	20083
084-0156	Sangamon	BUFFALO-MCHBG/ CH 19	I-72 / US 36	1M S BUFFALO	246.0	68.0	3.77	3.77	18583
084-0157	Sangamon	I-72 / US 36 (WB)	CLEAR CREEK	2.1M E BUFFALO INTCH	186.0	42.0	3.77	3.77	9214
084-0158	Sangamon	I-72 / US 36 (EB)	CLEAR CREEK	2.1M E BUFFALO INTCH	186.0	42.0	3.77	3.77	9214
084-0171	Sangamon	IL 123 / CH 2	I-55	WILLIAMSVILLE INTCHG	275.6	68.0	3.77	3.77	20819
TOTAL =									144969

INSIDE SPRINGFIELD MPO									
SN	County	Facility Carried	Feature Crossed	Location	Deck Length (FT)	Deck Width (FT)	Parapet (FT)	Parapet (FT)	Deck Area (SQ FT)
084-0014	Sangamon	I-55 (SB)	SANGAMON AVE / IL 54	I-55/IL54 INT NE SPI	240.5	73.9	3.77	3.77	19586
084-0015	Sangamon	I-55 (NB)	SANGAMON AVE / IL 54	I-55/IL54 INT NE SPI	240.5	73.9	3.77	3.77	19586
084-0016	Sangamon	I-55 (SB)	ILLINOIS CENTRAL RR	.3M N IL 54/SANG. AV	244.5	65.4	3.77	3.77	17834
084-0017	Sangamon	I-55 (NB)	ILLINOIS CENTRAL RR	.3M N IL 54/SANG. AV	244.5	65.4	3.77	3.77	17834
084-0018	Sangamon	I-55 (NB)	SANGAMON RIVER	2.8M N IL54/SANG. AV	1125.0	47.2	3.77	3.77	61583
084-0019	Sangamon	I-55 SB	SANGAMON RIVER	2.8M N IL54/SANG. AV	1125.0	47.2	3.77	3.77	61583
084-0020	Sangamon	I-55 (NB)	BL 55 & UP RR	SHERMAN INTERCHANGE	361.3	47.2	3.77	3.77	19777
084-0022	Sangamon	I-55 (NB)	FANCY CREEK	1M N SHERMAN INTCHG	150.5	47.6	3.77	3.77	8299
084-0023	Sangamon	I-55 (SB)	FANCY CREEK	1M N SHERMAN INTCHG	150.6	59.2	3.77	3.77	10052
084-0030	Sangamon	PEORIA RD. / BL 55	SANGAMON RIVER	.9M N DIRKSEN PKWY	632.6	67.2	3.77	3.77	47281
084-0037	Sangamon	11TH STREET	I-55 / I-72 / US 36	.45M E 6TH ST.	360.9	86.6	3.77	3.77	33975
084-0050	Sangamon	CLEAR LAKE AVE (EB)	I-55	CLEAR LK AVE E SPFLD	273.5	52.4	3.77	3.77	16394
084-0051	Sangamon	CLEAR LAKE / I-72(WB)	I-55	I-55-CLR LK - E SPFD	273.0	52.4	3.77	3.77	16364
084-0052	Sangamon	OLD US 36	SANGAMON RIVER	SW EDGE RIVERTON	777.7	36.0	3.77	3.77	33878
084-0073	Sangamon	DIRKSEN PKWY (SB)	NS RR & IC RR	.5M S SANG AVE	415.5	30.7	3.77	3.77	15889
084-0078	Sangamon	I-72 / US 36 (EB)	I-55 (SB)	.25M E 6TH ST.	347.0	37.3	3.77	3.77	15559
084-0101	Sangamon	BISSELL ROAD	I-55	1.1M N SANGAMON AVE	224.2	29.7	3.77	3.77	8350
084-0104	Sangamon	S SECOND ST RD	I-72 / US 36	.5M W I-55/6TH ST	220.5	34.0	3.77	3.77	9160
084-0112	Sangamon	I-55 (NB)	ILLINOIS CENTRAL RR	1M N GLENARM INTCHG	340.0	58.0	3.77	3.77	21094
084-0113	Sangamon	I-55 (SB)	ILLINOIS CENTRAL RR	1M N GLENARM INTCHG	340.0	58.0	3.77	3.77	22284
084-0116	Sangamon	E LAKE SHORE DR	I-55	.5M S LK SPFLD BRG	262.2	80.3	3.77	3.77	23032
084-0151	Sangamon	OAK CREST RD/ TR 171	I-72	2.9M E I-55	264.3	36.0	3.77	3.77	11508
084-0152	Sangamon	I-72 / US 36 (WB)	SANGAMON RIVER	3.5M E I-55	818.8	42.0	3.77	3.77	40563
084-0153	Sangamon	I-72 / US 36 (EB)	SANGAMON RIVER	3.5M E I-55	818.8	42.0	3.77	3.77	40563
084-0168	Sangamon	IL 29/J D JONES PKWY	SPRING CR OVERFLOW	.34M S VETERANS/IL 4	106.0	92.0	3.77	3.77	10551
084-0169	Sangamon	IL 29-J D JONES PKWY	SPRING CREEK	.5M S VETERANS(IL 4)	216.0	92.0	3.77	3.77	21501
084-0179	Sangamon	PEORIA RD. / BL 55)	SANGAMON R OVERFLOW	.7 M N DIRKSEN PKWY.	441.5	67.2	3.77	3.77	32998
084-0203	Sangamon	VETERANS/IL 4 (NB)	SPRING CREEK	.9M E IL29/WALNUT ST	406.2	43.2	3.77	3.77	20611
084-0204	Sangamon	VETERANS/IL 4 (SB)	SPRING CREEK	.9M E IL29/WALNUT ST	406.2	43.2	3.77	3.77	20611
084-0205	Sangamon	ILL 54	SANGAMON RIVER	SW EDGE SPAULDING	852.6	42.7	3.77	3.77	42835
084-0210	Sangamon	I-55 (SB)/ I-72 (WB)	LOST BRIDGE TRAIL BP	.3M S IL29/S GRND AV	136.3	75.9	3.77	3.77	11373
084-0211	Sangamon	I-55 (NB)/ I-72 (EB)	LOST BRIDGE TRAIL BP	.3M S IL29/S GRND AV	136.3	65.2	3.77	3.77	9915
084-0499	Sangamon	I-55 (SB)	LAKE SPRINGFIELD	3M S I-72	722.6	62.1	3.77	3.77	50321
084-0500	Sangamon	I-55 (NB)	LAKE SPRINGFIELD	3M S I-72	722.6	62.1	3.77	3.77	50321
084-0510	Sangamon	SANGAMON AV. (EB)	ILLINOIS CENTRAL RR	.25M W I-55	247.9	47.2	3.77	3.77	13570
084-0511	Sangamon	SANGAMON AV. (WB)	ILLINOIS CENTRAL RR	.25M W I-55	247.9	61.2	3.77	3.77	17041
084-0514	Sangamon	I72/MACARTHUR RAMP B	UPRR	1.3 MI W I-55	316.0	29.1	3.77	3.77	11579
084-0516	Sangamon	I72/MACARTHUR RAMP	UPRR/RECREATION DR	1.3 MI W I 55	229.0	29.1	3.77	3.77	8391
084-0517	Sangamon	I-55 W FR (PALM RD.)	ILLINOIS CENTRAL RR	.9M N GLENARM INTCHG	314.0	35.2	3.77	3.77	13421
084-0521	Sangamon	IL 4	POLECAT CREEK	.2 S OF PLUMMER CHTM	132.1	78.3			11339
TOTAL =									938406

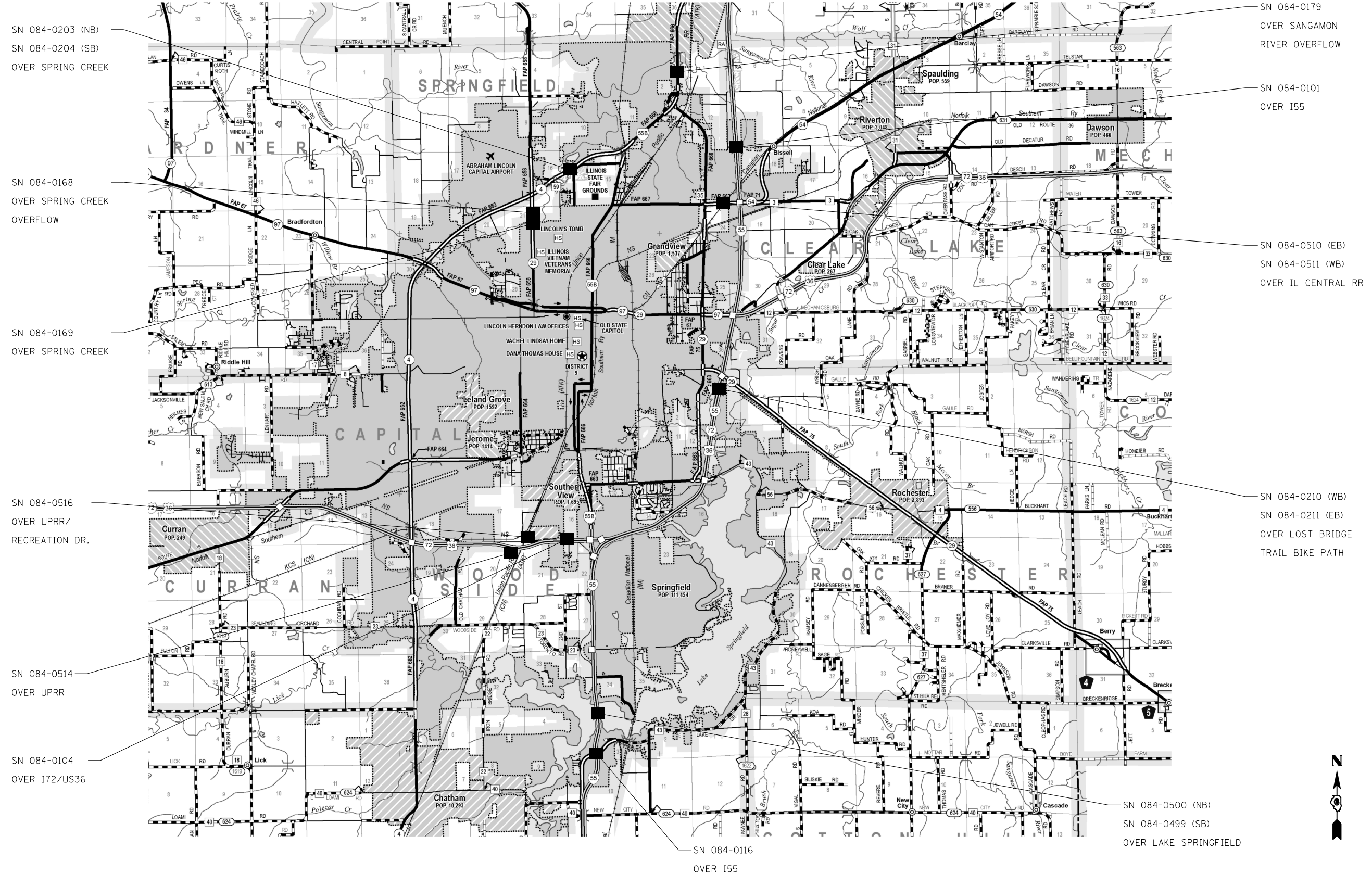
SANGAMON COUNTY



FILE NAME =	USER NAME = Verenskif	DESIGNED -	REVISED -	STATE OF ILLINOIS DEPARTMENT OF TRANSPORTATION	BRIDGE LOCATION MAP				F.A. RTE.	SECTION	COUNTY	TOTAL SHEETS	SHEET NO.	
p:\IL\084EBIDINTEG\illinois.gov\PIDOT\Documents\DOT Offices\District 6\Projects\0672101\Drawings\CAD\Sheets\0672101-sht-SANGAMON		DRAWN -	REVISED -		SCALE:	SHEET	OF	SHEETS	STA.	TO	STA.	ILLINOIS FED. AID PROJECT	7	5
		CHECKED -	REVISED -									CONTRACT NO.	72101	
		DATE -	REVISED -											

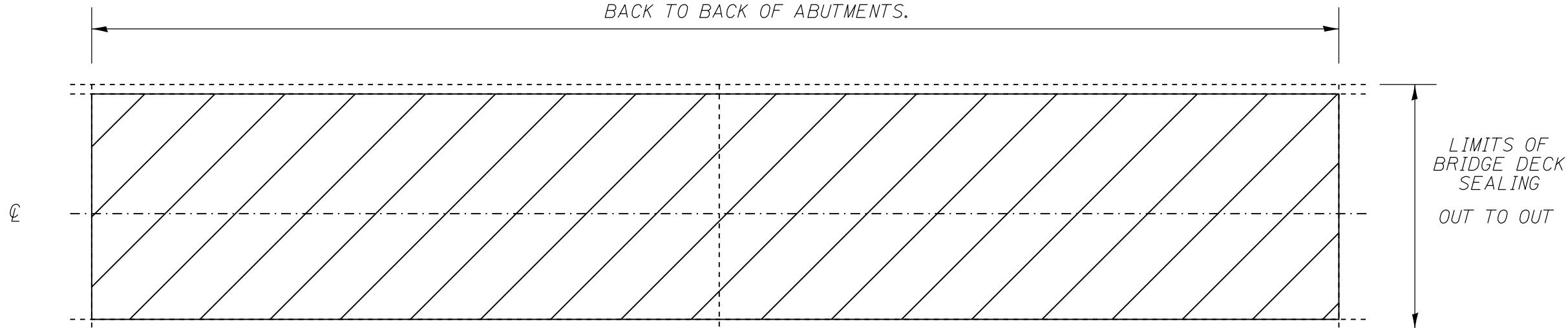
*** D6 BDGE DK SEALING 2016-1

SANGAMON COUNTY

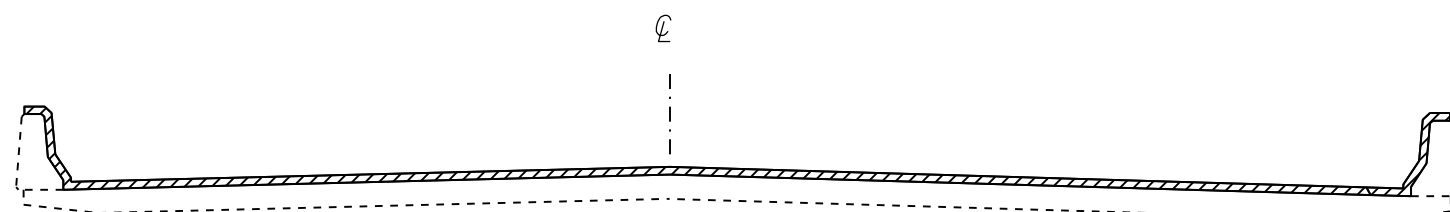


FILE NAME =	USER NAME = Verenskif	DESIGNED -	REVISED -	STATE OF ILLINOIS DEPARTMENT OF TRANSPORTATION	BRIDGE LOCATION MAP			F.A. RTE.	SECTION	COUNTY	TOTAL SHEETS	SHEET NO.		
p:\11\084EBID\TEG\Illinois.gov\PI\DOT\Documents\DOT Offices\District 6\Projects\0672101\Drawings\CAD\Sheets\0672101-sht-SANGAMON\REVISED -		CHECKED -	REVISED -		SCALE:	SHEET	OF	SHEETS	STA.	TO	STA.	ILLINOIS	FED. AID PROJECT	
PLOT SCALE = 40.0000' / in.		DATE -	REVISED -									SANGAMON	7	6
PLOT DATE = 12/9/2015												CONTRACT NO.	72101	

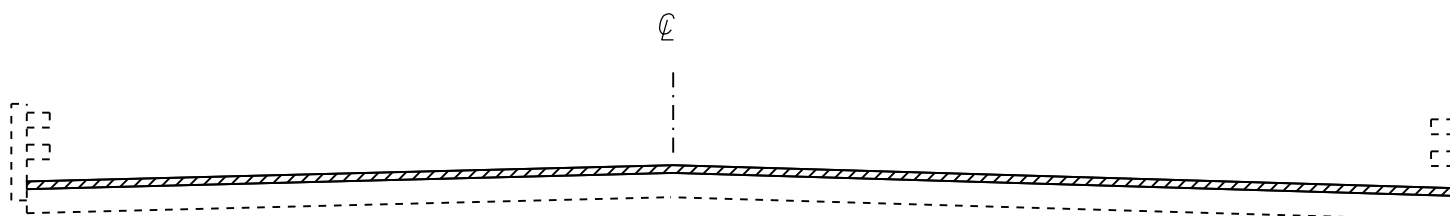
LIMITS OF BRIDGE DECK SEALING
BACK TO BACK OF ABUTMENTS.



PLAN VIEW




CROSS SECTION
WITH PARAPET



CROSS SECTION
WITH BRIDGE RAIL

NOTE: BRIDGE APPROACH PAVEMENT
SHALL NOT BE SEALED

NOT TO SCALE

 AREA TO BE SEALED

FILE NAME =	USER NAME = Verenskif	DESIGNED -	REVISED -	STATE OF ILLINOIS DEPARTMENT OF TRANSPORTATION	BRIDGE DETAIL SHEET				F.A. RTE.	SECTION	COUNTY	TOTAL SHEETS	SHEET NO.
pw:\IL\084EBIDINTEG.illinois.gov\PWIDOT\Documents\IDOT Offices\District 6\Projects\0672101\DRAWING\GADsheets\0672101-sht-details		DRAWN -	REVISED -		SCALE:	SHEET	OF	SHEETS	STA.	TO	STA.	7	7
Default	PLOT SCALE = 100.0000' / 1in.	CHECKED -	REVISED -		CONTRACT NO. 72101								
	PLOT DATE = 12/9/2015	DATE -	REVISED -		ILLINOIS FED. AID PROJECT								