

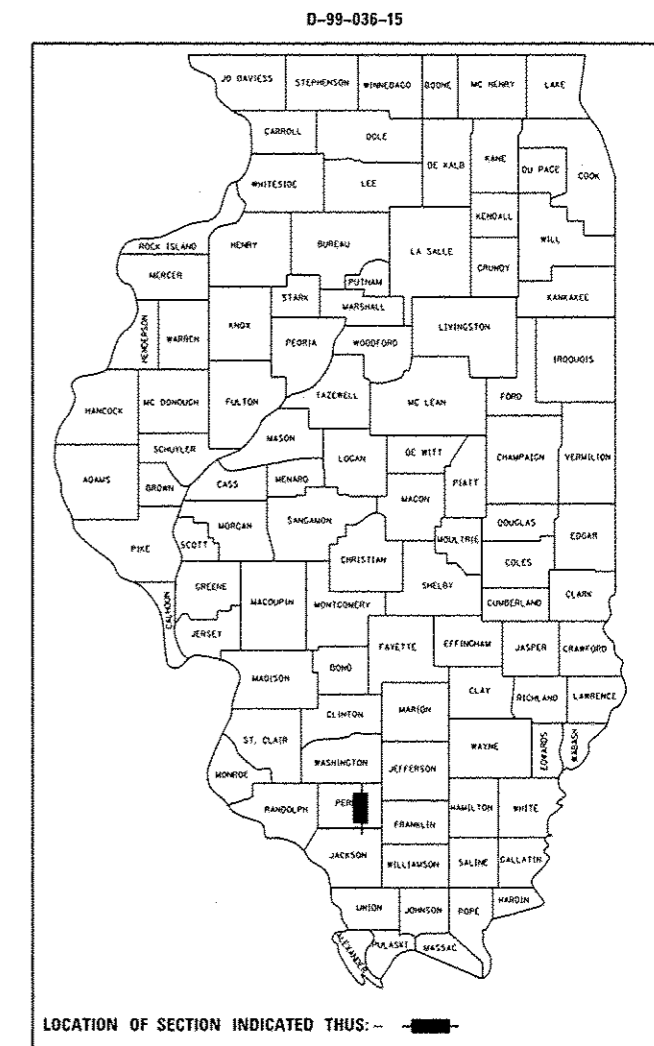
STATE OF ILLINOIS  
DEPARTMENT OF TRANSPORTATION  
DIVISION OF HIGHWAYS

F.A.P. RTE.	SECTION	COUNTY	TOTAL SHEETS	SHEET NO.
322	SRS-3	PERRY	23	1
ILLINOIS			CONTRACT NO. 78476	

# PROPOSED HIGHWAY PLANS

FAP ROUTE 322 (US 51)  
SECTION 5RS-3  
PROJECT ACHSIP-ACF-0322 (114)  
3P RESURFACING  
PERRY COUNTY

C-99-044-15



FOR INDEX OF SHEETS, SEE SHEET NO. ...

ADT 5254 (2015)  
PV = 4794  
SU = 278  
MU = 182  
TRUCK 8.7%

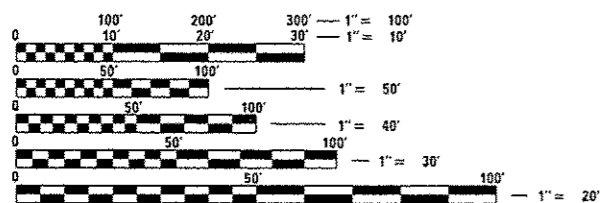
EQUATION STATIONS:

EQ. STA. 141+50.0 (BK) = STA. -(18+87.5) (AH)  
EQ. STA. -(0+00) (BK) = STA. 0+00 (AH)  
EQ. STA. 7+10.3 (BK) = STA. 7+11.2 (AH)  
EQ. STA. 12+62.2 (BK) = STA. 12+78.5 (AH)  
EQ. STA. 69+96.5 (BK) = STA. 70+00.0 (AH)  
EQ. STA. 107+99.0 (BK) = STA. 108+00.0 (AH)  
EQ. STA. 149+89.6 (BK) = STA. 149+89.8 (AH)

OMISSIONS:

STA. -(4+95) TO STA. -(4+35)  
(RAILROAD CROSSING)  
STA. 0+00 TO STA. 1+10  
(RAILROAD CROSSING)  
STA. 196+80 TO STA. 220+00  
(IL 154 INTERSECTION)

TOWNSHIPS:  
DUQUOIN



FULL SIZE PLANS HAVE BEEN PREPARED USING STANDARD ENGINEERING SCALES. REDUCED SIZED PLANS WILL NOT CONFORM TO STANDARD SCALES. IN MAKING MEASUREMENTS ON REDUCED PLANS, THE ABOVE SCALES MAY BE USED.

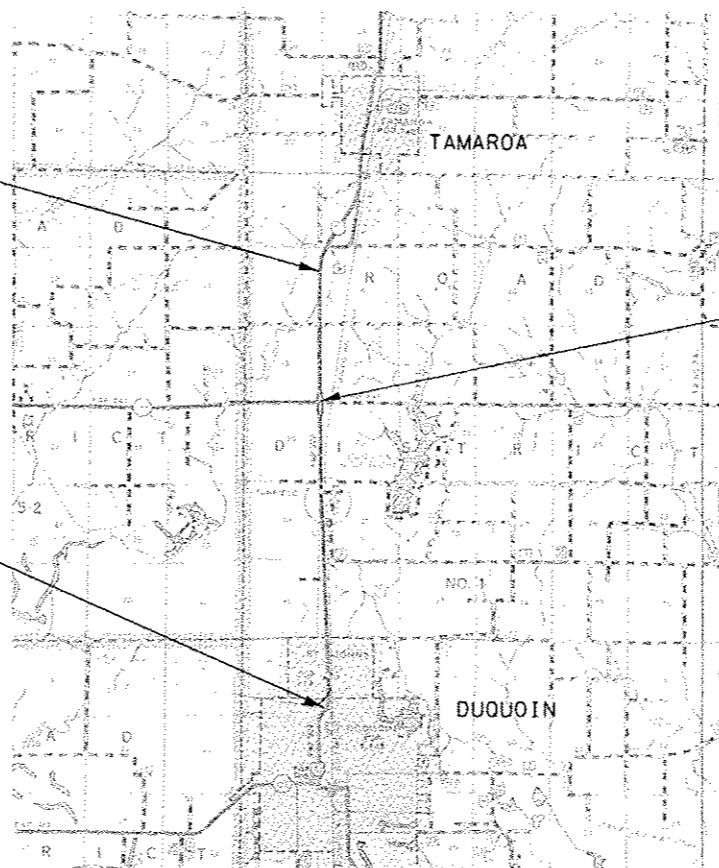
J.U.L.I.E.  
JOINT UTILITY LOCATION INFORMATION FOR EXCAVATION  
1-800-892-0123  
OR 811

PROJECT ENGINEER: CHARLES STEIN (618)351-5210  
PROJECT MANAGER: KATHI MCCORD (618)351-5319

CONTRACT NO. 78476

PROPOSED PROJECT ENDS  
STA. 296+00 (US 51)

PROPOSED PROJECT  
BEGINS - STA. 138+57  
(US 51)



Intersection US 51 & IL 154:  
Eq Sta. 207+44.5  
(FAP 322/US 51) =  
Sta. 410+36.6 (IL 154)

NET LENGTH = 31,596.6 FT. = 5.98 MILES  
OMISSION TOTAL = 2,490 FT. = 0.47 MILES  
GROSS LENGTH = 29,106.6 FT. = 5.51 MILES

STATE OF ILLINOIS  
DEPARTMENT OF TRANSPORTATION  
DIVISION OF HIGHWAYS

SUBMITTED *Oct 16 2015*

*Jeffrey A. Kevin*  
DEPUTY DIRECTOR OF HIGHWAYS, REGION ENGINEER

*Jan 29 2016*  
*Maurice M. Addis, P.E.*  
ENGINEER OF DESIGN AND ENVIRONMENT

*Jan 29 2016*  
*Omer Osman, P.E.*  
DIRECTOR OF HIGHWAYS, CHIEF ENGINEER

PRINTED BY THE AUTHORITY  
OF THE STATE OF ILLINOIS

Prepared By:

DISTRICT STUDIES & PLANS ENGINEER

Examined By:

*Justin E.*  
DISTRICT LAND ACQUISITION ENGINEER

Examined By:

*Car Mls*  
DISTRICT PROGRAM DEVELOPMENT ENGINEER

Examined By:

*Karl Kelly*  
DISTRICT OPERATIONS ENGINEER

Examined By:

*[Signature]*  
DISTRICT PROJECT IMPLEMENTATION ENGINEER

Examined By:

*Dwight J. Fullin*  
DISTRICT CONSTRUCTION ENGINEER

Examined By:

*[Signature]*  
DISTRICT MATERIALS ENGINEER

FILE NAME :	USER NAME :	DESIGNED -	REVISED -
p:\N\804EB\INTEG.illinois.gov\FW001\06	ments\007 Offices\District 9\Projects\78476	DAVID	DAVID
Default	PLOT SCALE : 200.0000 ' / in.	CHECKED -	REVISED -
	PLOT DATE : 8/2/2015	DATE -	REVISED -

STATE OF ILLINOIS  
DEPARTMENT OF TRANSPORTATION

SIGNATURE BLOCK

SCALE: SHEET OF SHEETS STA. TO STA.

F.A.P. RTE.	SECTION	COUNTY	TOTAL SHEETS	SHEET NO.
322	SRS-3	PERRY	23	2
CONTRACT NO. 78476				
ILLINOIS FED. AID PROJECT				

INDEX OF SHEETS

GENERAL NOTES

SHEET NO.	DESCRIPTION
1	COVER SHEET
2	SIGNATURE SHEET
3	INDEX OF SHEETS, STANDARDS & GENERAL NOTES
4	MIXTURE REQUIREMENTS & MTD RESTRICTIONS
5 - 6	SUMMARY OF QUANTITIES
7 - 8	TYPICAL SECTION
9	RESURFACING SCHEDULE - MAINLINE
10	RESURFACING SCHEDULES - SIDE ROADS AND ENTRANCES
11 - 12	SHOULDER SCHEDULE
13 - 14	PAVEMENT MARKING SCHEDULE
15 - 20	PLAN SHEETS
21	MAINLINE BUTT JOINT DETAIL
22	DETAILS - SIDE ROADS AND ENTRANCES
23	DETAIL - TEMPORARY HOT-MIX ASPHALT TRANSITIONS; UNEVEN LANES & ROUGH GROOVED SURFACE SIGNS

STANDARDS:

- 482011-03 ✓
- 701011-04
- 701006-05
- 701301-04
- 701306-03
- 701311-03
- 701336-06
- 701901-04
- 780001-05
- 781001-03

THE THICKNESS OF HOT-MIX ASPHALT MIXTURE SHOWN ON THE PLANS IS THE NOMINAL THICKNESS. DEVIATIONS FROM THE NOMINAL THICKNESS WILL BE PERMITTED WHEN SUCH DEVIATIONS OCCUR DUE TO IRREGULARITIES IN THE EXISTING SURFACE OR BASE ON WHICH THE HOT-MIX ASPHALT MIXTURE IS PLACED.

FACTORS USED FOR ESTIMATING PLAN QUANTITIES ARE AS FOLLOWS AND SHALL NOT BE USED FOR THE BASIS OF FINAL QUANTITIES:

ALL HOT MIX ASPHALT:	2.016 TONS / CU. YD.
BITUMINOUS MATERIALS:	
ON PR. PAVEMENT	0.025 LBS. / SQ. FT.
ON EX. PAVEMENT	0.05 LBS. / SQ. FT.
ALL AGGREGATE:	2.05 TONS / CU. YD.

AT ALL LOCATIONS WHERE THE PROPOSED HOT MIX ASPHALT OR CONCRETE PAVEMENT JOINS AN EXISTING HOT MIX ASPHALT OR CONCRETE PAVEMENT, A FULL DEPTH SAWED JOINT SHALL BE CONSTRUCTED. THE COST OF THIS JOINT WILL BE INCLUDED IN THE COST OF THE TYPE OF PAVEMENT BEING CONSTRUCTED.

THE CONTRACTOR SHALL STAMP STATIONING IN THE PROPOSED HOT MIX ASPHALT SURFACE AT 100m (300 FT.) INTERVALS ON ALTERNATING SIDES OF THE PAVEMENT AND AS DIRECTED BY THE ENGINEER. THE STATION SYMBOL STAMPS USED SHALL BE FURNISHED BY THE CONTRACTOR. THEY SHALL BE 140mm (5 IN.) TALL, OF A DESIGN APPROVED BY THE ENGINEER, AND SHALL REMAIN THE PROPERTY OF THE CONTRACTOR.

THE QUANTITIES SHOWN IN THE PLANS FOR PATCHING AREA ESTIMATES. THE ACTUAL AMOUNT OF PATCHING REQUIRED SHALL BE DETERMINED BY THE ENGINEER IN THE FIELD. PATCHING SURVEY WAS DONE ON AUGUST 7, 2015.

THE QUANTITY FOR PRIME COAT WAS CALCULATED IN TWO LAYERS. ONE APPLICATION AFTER MILLING THE EXISTING SURFACE AND ONE APPLICATION AFTER PLACING THE BINDER COURSE AND SHALL BE USED AS DIRECTED BY THE ENGINEER.

THE QUANTITY OF SHORT-TERM PAVEMENT MARKING SHOWN IN THE PLANS IS BASED ON ONE APPLICATION EACH FOR THE HMA SURFACE REMOVAL, SURFACE COURSE AND BINDER COURSE.

BITUMINOUS RESURFACING SHALL BE PLACED IN A SEQUENCE THAT WILL MINIMIZE THE TIME THE CENTERLINE EDGE IS EXPOSED TO TRAFFIC. WHEN AT THE END OF A DAY'S OPERATION THE EXPOSED CENTERLINE EDGE IS GREATER THAN 600 METTERS (2,000 FT.), THE CONTRACTOR SHALL BE REQUIRED TO PAVE IN THE ADJACENT LANE ON THE FOLLOWING WORK DAY.

THE EXCAVATED AGGREGATE/EARTH FOR THE PROPOSED SHOULDER SHALL NOT BE WASTED ON THE CONSTRUCTION SITE, UNLESS APPROVAL IS FIRST GIVEN BY THE ENGINEER.

COMMITMENTS: NONE

FILE NAME =	USER NAME = moe@ndkr	DESIGNED -	REVISED -	<b>STATE OF ILLINOIS DEPARTMENT OF TRANSPORTATION</b>	<b>INDEX OF SHEETS, STANDARDS &amp; GENERAL NOTES</b>	F.A.P. RTE.	SECTION	COUNTY	TOTAL SHEETS	SHEET NO.
pw\11284EBIDINTEG.illinois.gov\PK1007\Documents\1007_Offices\District 9\Projects\78476\Drawings\CD\Sheets\78476_sht.dgn		CHECKED -	REVISED -			322	5RS-3	PERRY	23	3
Default	PLOT SCALE = 228.2888 ' / in.	DATE -	REVISED -			SCALE: SHEET OF SHEETS STA. TO STA.		CONTRACT NO. 78476 ILLINOIS FED. AID PROJECT		

### MIXTURE REQUIREMENTS

Locations	Hot-Mix Asphalt Surface Course
Mixture Use(s):	Hot-Mix Asphalt Surface Course, Mix. D, N90
AC/PG:	PG64-22
ABR % (Max):	See Special Provision
Design Air Voids:	4.0%, 90 Gyration Design
Mixture Composition: (Gradation Mixture)	IL-9.5mm
Friction Aggregate:	D Surface
Quality Management Program:	OCP

Locations	Hot-Mix Asphalt Shoulders (Top Lift)
Mixture Use(s):	Hot-Mix Asphalt Surface Course, Mix. C, N70
AC/PG:	PG64-22
ABR % (Max):	See Special Provision
Design Air Voids:	4.0%, 70 Gyration Design
Mixture Composition: (Gradation Mixture)	IL-9.5mm
Friction Aggregate:	C Surface
Quality Management Program:	OCP

Locations	Hot-Mix Asphalt Leveling Binder Course
Mixture Use(s):	Hot-Mix Asphalt Leveling Binder, N90, Fine Graded
AC/PG:	PG64-22
ABR % (Max):	See Special Provision
Design Air Voids:	4.0%, 90 Gyration Design
Mixture Composition: (Gradation Mixture)	IL-9.5mm Fine Graded
Friction Aggregate:	None
Quality Management Program:	OCP

Locations	Hot-Mix Asphalt Shoulders (Lower Lift)
Mixture Use(s):	Hot-Mix Asphalt Binder Course, N90, IL-19.0mm
AC/PG:	PG64-22
ABR % (Max):	See Special Provision
Design Air Voids:	4.0%, 70 Gyration Design
Mixture Composition: (Gradation Mixture)	IL-19.0mm
Friction Aggregate:	None
Quality Management Program:	OCP

Locations	Incidental Hot-Mix Asphalt Surfacing
Mixture Use(s):	Hot-Mix Asphalt Surface Course, Mix C, N70
AC/PG:	PG64-22
ABR % (Max):	See Special Provision
Design Air Voids:	4.0%, 70 Gyration Design
Mixture Composition: (Gradation Mixture)	IL-9.5mm Fine Graded
Friction Aggregate:	C Surface
Quality Management Program:	OCPA

### MTD CROSSING RESTRICTIONS TABLE

SN & CENTERLINE STATION FAP 322 (US 51)	EXISTING FILL HEIGHT OVER BOX CULVERT	THICKNESS OF EXISTING PAVEMENT OVER	MTD CROSSING RESTRICTIONS
	FOOT	FOOT	
SN 076-7005 (STA. 227+00.3)	2.4'	1.16'	Pending
SN 076-7006 (STA. 275+54.0)	1.2'	1.16'	Pending

# SUMMARY OF QUANTITIES

M2E2      M3E  
STP      HSEP

FAP 322 (US 51)	
80% FED., 20% STATE	90% FED., 10% STATE
RURAL	
RESURFACING	HMA SHOULDERS
PERRY COUNTY	
CONSTRUCTION TYPE CODE	
0005	0021

CODE NUMBER	ITEM DESCRIPTION	UNIT	TOTAL QUANTITY	QUANTITY	QUANTITY
40600275	BITUMINOUS MATERIALS (PRIME COAT)	POUND	62,136	50,641	11,495
Z0034105	MATERIAL TRANSFER DEVICE	TON	9,310	9,310	
Z0048665	RAILROAD PROTECTIVE LIABILITY INSURANCE	L SUM	1	1	
20200600	EXCAVATING AND GRADING EXISTING SHOULDERS	UNIT	574		574
40600647	LEVELING BINDER (MACHINE METHOD), 1L-9, 5FC, N90	TON	3,094	3,094	
40600982	HOT-MIX ASPHALT SURFACE REMOVAL - BUTT JOINT	SQ YD	724	724	
40600990	TEMPORARY RAMP	SQ YD	79	79	
40603345	HOT-MIX ASPHALT SURFACE COURSE, MIX. "D", N90	TON	6,216	6,216	
40800050	INCIDENTAL HOT-MIX ASPHALT SURFACING	TON	237	237	
44000152	HOT-MIX ASPHALT SURFACE REMOVAL - 3/4"	SQ YD	73,555	73,555	
44201403	CLASS C PATCHES, TYPE II, 14 INCH	SQ YD	390	390	
44201407	CLASS C PATCHES, TYPE III, 14 INCH	SQ YD	40	40	
44201409	CLASS C PATCHES, TYPE IV, 14 INCH	SQ YD	118	118	
48102100	AGGREGATE WEDGE SHOULDERS, TYPE B	TON	1,110	1,110	
48203029	HOT-MIX ASPHALT SHOULDERS, 8 INCH	SQ YD	25,530		25,530
64200108	SHOULDER RUMBLE STRIPS, 8 INCH	FOOT	57,398		57,398

16

## SUMMARY OF QUANTITIES

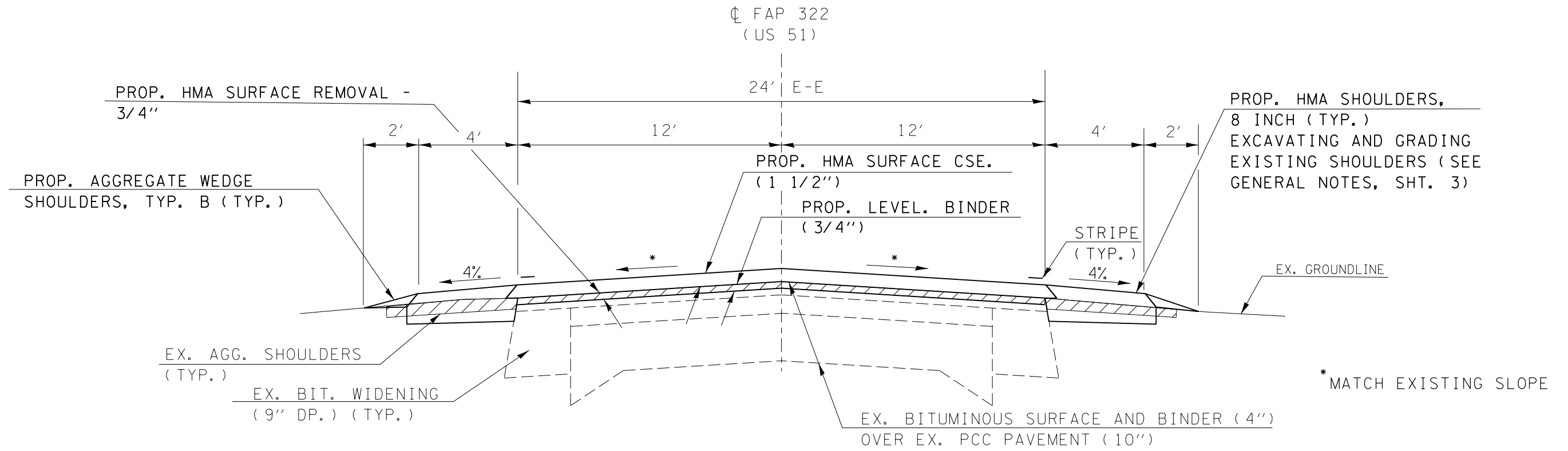
FAP 322 (US 51)	
80% FED., 20% STATE	90% FED., 10% STATE
RURAL	
RESURFACING	HMA SHOULDERS
PERRY COUNTY	
CONSTRUCTION TYPE CODE	
0005	0021

CODE NUMBER	ITEM DESCRIPTION	UNIT	TOTAL QUANTITY	QUANTITY	QUANTITY
67000400	ENGINEER'S FIELD OFFICE, TYPE A	CAL MO	3	2	1
67100100	MOBILIZATION	L SUM	1	0.5	0.5
70100460	TRAFFIC CONTROL AND PROTECTION, STANDARD 701306	L SUM	1	0.5	0.5
70100600	TRAFFIC CONTROL AND PROTECTION, STANDARD 701336	L SUM	1	1	
70106800	CHANGEABLE MESSAGE SIGN	CAL MO	3	2	1
70300100	SHORT- TERM PAVEMENT MARKING	FOOT	8,405	8,405	
70300210	TEMPORARY PAVEMENT MARKING - LETTERS AND SYMBOLS	SQ FT	244	244.0	
70300220	TEMPORARY PAVEMENT MARKING - LINE 4"	FOOT	62,769	62,769	
70300280	TEMPORARY PAVEMENT MARKING - LINE 24"	FOOT	324	324	
70301000	WORK ZONE PAVEMENT MARKING REMOVAL	SQ FT	23,488	23,488	
* 78000100	THERMOPLASTIC PAVEMENT MARKING - LETTERS AND SYMBOLS	SQ FT	244	244.0	
* 78000200	THERMOPLASTIC PAVEMENT MARKING - LINE 4"	FOOT	62,769	62,769	
* 78000650	THERMOPLASTIC PAVEMENT MARKING - LINE 24"	FOOT	324	324	
* 78100100	RAISED REFLECTIVE PAVEMENT MARKER	EACH	346	346	
78300200	RAISED REFLECTIVE PAVEMENT MARKER REMOVAL	EACH	346	346	

\* SPECIALTY ITEM

FILE NAME *	USER NAME * mcorcor	DESIGNED -	REVISED -	<b>STATE OF ILLINOIS DEPARTMENT OF TRANSPORTATION</b>	<b>SUMMARY OF QUANTITIES</b>	F.A.P. RTE.	SECTION	COUNTY	TOTAL SHEETS	SHEET NO.
plm\1\084EB\INTCG\illinois.gov\PI\DOT\Documents\DOT Offices\District 8\Projects\78476\DRAWING\CO\Sheets\78476.sht.dgn		CHECKED -	REVISED -			322	SRS-3	PERRY	23	6
Default	PLOT SCALE = 200:0000' / 1" = 1'	DATE -	REVISED -			SCALE: SHEET OF SHEETS STA. TO STA.		ILLINOIS FED. AID PROJECT CONTRACT NO. 78476		

# TYPICAL SECTION



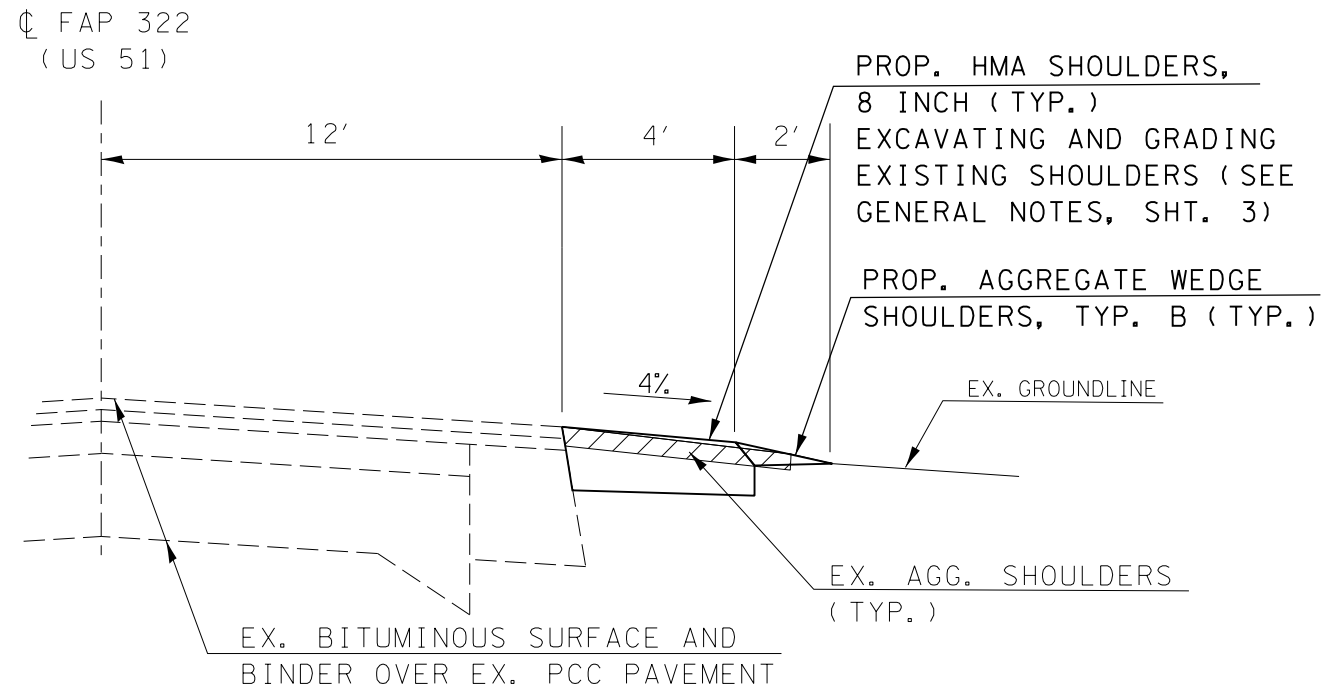
TO BE USED:  
 STA. -(4+35) TO STA. -(0+00)  
 STA. 1+10.00 TO STA. 7+10.30  
 STA. 7+11.20 TO STA. 12+62.20  
 STA. 12+78.50 TO STA. 69+96.50  
 STA. 70+00.00 TO STA. 107+99.00  
 STA. 108+00.00 TO STA. 149+89.60  
 STA. 149+89.80 TO STA. 196+80.00  
 OMISSION - STA. 196+80.00 TO STA. 220+00.00  
 STA. 220+00.00 TO STA. 296+00.00

**EQUATION STATIONS & OMISSIONS:**

EQ. STA. 141+50.0(BK) = STA. -(18+87.5)(AH)  
 OMISSION STA. -(4+95) TO STA. -(4+35) (RAILROAD CROSSING)  
 EQ. STA. -(0+00)(BK) = STA. 0+00 (AH)  
 OMISSION STA. 0+00 TO STA. 1+10 (RAILROAD CROSSING)  
 EQ. STA. 7+10.3 (BK) = STA. 7+11.2 (AH)  
 EQ. STA. 12+62.2 (BK) = STA. 12+78.5 (AH)  
 EQ. STA. 69+96.5 (BK) = STA. 70+00.0 (AH)  
 EQ. STA. 107+99.0 (BK) = STA. 108+00.0 (AH)  
 EQ. STA. 149+89.6 (BK) = STA. 149+89.8 (AH)  
 OMISSION STA. 196+80 TO STA. 220+00  
 ( INTERSECTION US 51 AND IL 154)

FILE NAME =	USER NAME = mccordkr	DESIGNED -	REVISED -	<b>STATE OF ILLINOIS DEPARTMENT OF TRANSPORTATION</b>	<b>TYPICAL SECTION</b>			F.A.P. RTE.	SECTION	COUNTY	TOTAL SHEETS	SHEET NO.
pw:\IL\084EBIDINTEG.illinois.gov\PIWIDOT\Documents\IDOT Offices\District 9\Projects\78476\Drawings\CAD\Sheets\78476.sht.dgn	DESIGNED -	REVISED -	322					5RS-3	PERRY	23	7	
Default	PLOT SCALE = 200.0000' / in.	CHECKED -	REVISED -		SCALE: SHEET OF SHEETS STA. TO STA.			CONTRACT NO. 78476				
	PLOT DATE = 11/23/2015	DATE -	REVISED -		ILLINOIS FED. AID PROJECT							

# TYPICAL SECTION



TO BE USED:  
 RT. STA. 138+57 TO STA. 141+50  
 LT. STA. 139+18 TO STA. 141+50  
 EQ. STA. 141+50.0(BK) = STA. -(18+87.5)(AH)  
 STA. -(18+87.5) TO STA. -(4+95)  
 OMISSION - STA. -(4+95) TO STA. -(4+35)

FILE NAME =	USER NAME = mccordkr	DESIGNED -	REVISED -	<b>STATE OF ILLINOIS DEPARTMENT OF TRANSPORTATION</b>	<b>TYPICAL SECTION</b>			F.A.P. RTE.	SECTION	COUNTY	TOTAL SHEETS	SHEET NO.
pw:\IL\084EBIDINTEG.illinois.gov\PWIDOT\Documents\IDOT Offices\District 9\Projects\78476\Drawings\CAD\Sheets\78476.sht.dgn	DESIGNED -	REVISED -	322					5RS-3	PERRY	23	8	
Default	PLOT SCALE = 200.0000' / in.	CHECKED -	REVISED -		SCALE: SHEET OF SHEETS STA. TO STA.			CONTRACT NO. 78476				
	PLOT DATE = 11/23/2015	DATE -	REVISED -		ILLINOIS FED. AID PROJECT							



**US 51 MAINLINE RESURFACING SCHEDULE**

LOCATION STATION TO STATION	LENGTH	ROADWAY WIDTH	SHOULDER WIDTH	ROADWAY AREA	HOT-MIX ASP. SURF. REMOV. - BUTT JT.	TEMP RAMP	HMA SUR. REMOV. - 3/4"	HOT-MIX ASP. SUR. CSE., MIX D. N 90 (1 1/2")	LEVELING BINDER (MM) N90 (3/4")	BIT. MAT. (PRIME COAT)	NOTES				
												FOR INFORMATIONAL PURPOSE ONLY			
												(FT)	(FT)	(FT)	(SQ YD)
<b>MAINLINE: STA. -(4+35) TO STA. 296+00</b>															
-4+35	TO	-0+00	435	24	2	1,160	160	26	1,160	98	49	783			
<b>EO. STA. -(0+00) (BK.) = STA. 0+00 (AH.)</b>															
<b>OMISSION - STA. 0+00 TO STA.1+10 (RAILROAD CROSSING)</b>															
1+10.00	TO	7+10.30	600	24		1,601	80	13	1,601	136	68	1,081			
LT	1+10.00	TO	7+10.30	600											
RT	1+10.00	TO	7+10.30	600											
<b>EO. STA. 7+10.30 (BK.) = STA. 7+11.20 (AH.)</b>															
7+11.20	TO	12+62.20	551	24		1,469			1,469	125	62	992			
LT	7+11.20	TO	12+62.20	551											
RT	7+11.20	TO	12+62.20	551											
<b>EO. STA. 12+62.20 (BK.) = STA. 12+78.50 (AH.)</b>															
12+78.50	TO	69+96.50	5718	24		15248			15,248	1288	641	10,292			
LT	12+78.50	TO	69+96.50	5718											
RT	12+78.50	TO	69+96.50	5718											
<b>EO. STA. 69+96.50 (BK.) = STA. 70+00.00 (AH.)</b>															
70+00.00	TO	107+99.00	3799	24		10,131			10,131	856	426	6,838			
LT	70+00.00	TO	107+99.00	3799											
RT	70+00.00	TO	107+99.00	3799											
<b>EO. STA. 107+99.00 (BK.) = STA. 108+00.00 (AH.)</b>															
108+00.00	TO	149+89.60	4190	24		11,172			11,172	944	470	7,541			
LT	108+00.00	TO	149+89.60	4190											
RT	108+00.00	TO	149+89.60	4190											
<b>EO. STA. 149+89.60 (BK.) = STA. 149+89.80 (AH.)</b>															
149+89.80	TO	196+80.00	4690	24		12,507	80	13	12,507	1057	526	8,442			
LT	149+89.80	TO	196+80.00	4690											
RT	149+89.80	TO	196+80.00	4690											
<b>OMISSION - STA. 196+80 TO STA. 220+00 (INTERSECTON WITH IL. 154)</b>															
220+00.00	TO	296+00.00	7600	24		20,267	160	27	20,267	1712	852	13,680			
LT	220+00.00	TO	296+00.00	7600											
RT	220+00.00	TO	296+00.00	7600											
<b>MAINLINE TOTALS</b>						<b>72,395</b>	<b>480</b>	<b>79</b>	<b>73,555</b>	<b>6,216</b>	<b>3,094</b>	<b>49,650</b>			

### SIDE ROAD SCHEDULE

LOCATION			EXIST. SURFACE	EP WIDTH	WIDTH AT 15' OFFSET	ROADWAY AREA	HOT-MIX ASP. SURF. REMOV. -BUTT JT.	INCIDENTAL HMA SURFACING	BIT. MAT. (PRIME COAT)
			FOR INFORMATIONAL PURPOSE ONLY						
			(FT)	(FT)	(FT)	(SQ YD)	(SQ YD)	(TON)	(LBS)
FAP 726 (IL. 37)									
Lt.	2+80	Bakery Blve.	PCC	140	71	176	176	15	79
Lt.	9+50	Thorwell St.	Oil & Chip	71	34	88		12	39
Lt.	13+16	8th St.	Oil & Chip	61	31	77		10	35
Lt.	15+54	7th St.	Bit	50	32	68	68	6	31
Lt.	17+86	6th St.	Oil & Chip	105	55	133		17	60
Rt.	17+86	6th St.	Oil & Chip	108	52	133		17	60
Lt.	86+50	Hardscrabble Rd.	Oil & Chip	93	48	118		15	53
Rt.	99+96	Kimmel Rd.	Oil & Chip	150	85	196		25	88
Rt.	146+63	City Lake Rd.	Oil & Chip	93	51	120		16	54
Lt.	153+91	Bailey Lane	Oil & Chip	80	40	100		13	45
Lt.	260+60	Pintail Rd.	Oil & Chip	70	30	83		11	38
Rt.	260+60	Pintail Rd.	Oil & Chip	70	30	83		11	38
<b>TOTALS</b>							<b>244</b>	<b>168</b>	<b>620</b>

### ENTRANCE SCHEDULE

ENTRANCE TYPE	AMOUNT	EXIST. SURFACE	EP WIDTH	WIDTH AT APRON	ROADWAY AREA	INCIDENTAL HMA SURFACING	BIT. MAT. (PRIME COAT)	AGG. WEDGE (See Note 1)
		FOR INFORMATIONAL PURPOSE ONLY						
		(TYPE)	(FT)	(FT)	(SQ FT)	(TON)	(LBS)	(TON)
PE	60	Agg.	24.0	17.0	82	46	246	14
PE	3	O&C	24.0	17.0	82	2	12	
PE	1	Bit	24.0	17.0	82	1	4	
PE	1	PCC	24.0	17.0	82	1	4	
CE	12	Agg.	35.0	30.0	130	15	78	3
CE	3	Bit.	35.0	30.0	130	3	20	
CE	1	PCC	35.0	30.0	130	1	7	
<b>SUBTOTALS</b>						<b>69</b>	<b>371</b>	<b>17</b>

Note 1: Aggregate Wedge to be paid for as Aggregate Shoulders, Type B.

US 51 SHOULDER SCHEDULE

LOCATION STATION TO STATION				LENGTH	ROADWAY WIDTH	SHOULDER WIDTH		EXCAVATING AND GRADING EXISTING SHOULDERS	HMA SHOULDERS, 8 INCH	BITUMINOUS MATERIALS (PR. CT.)	AGG. WEDGE SHOULDERS, TY. B	SHOULDER RUMBLE STRIPS, 8 INCH	NOTES
						HMA SHLDS.	AGG. SHLDS.						
				( FT )	( FT )	( FT )	( FT )	( UNIT )	( SQ YD )	( LBS )	( TON )	( FT )	
<b>MAINLINE+ STA. 138+57 TO STA. 296+00</b>													
RT	138+57.00	TO	141+50.00	293	24	4	2	2.9	131	59	6	293	
LT	139+18.00	TO	141+43.00	225	24	4	2	2.3	100	45	5	225	
<b>EQ. STA. 141+50.0 (BK.) = STA. -(18+87.5) (AH.)</b>					24								
LT	-(18+38)	TO	-(15+60)	278	24	4	2	2.8	124	56	6	278	
RT	-(18+87.5)	TO	-(7+61)	1126.5	24	4	2	11.3	501	226	22	1127	
LT	-(15+18)	TO	-(12+26)	292	24	4	2	2.9	130	59	6	292	
LT	-(11+80)	TO	-(6+33)	547	24	4	2	5.5	244	110	11	547	
LT	-(5+66)	TO	-(4+95)	71	24	4	2	0.7	32	15	2	71	
RT	-(7+07)	TO	-(4+95)	212	24	4	2	2.1	95	43	5	212	
<b>OMISSION STA. -(4+95) TO STA. -(4+35)</b>													RAILROAD CROSSING
LT	-(4+35)	TO	-(0+00)	435	24	4	2	4.4	194	87	9	435	
RT	-(4+35)	TO	-(0+00)	435	24	4	2	4.4	194	87	9	435	
<b>EQ. STA. -(0+00) (BK.) = STA. 0+00 (AH.)</b>													
<b>OMISSION STA. 0+00 TO STA. 1+10</b>													RAILROAD CROSSING
LT	1+10.00	TO	2+30.00	120	24	4	2	1.2	54	24	3	120	
LT	3+20.00	TO	7+10.30	390	24	4	2	3.9	174	78	8	390	
RT	1+10.00	TO	7+10.30	600	24	4	2	6.0	267	121	12	600	
<b>EQ. STA. 7+10.30 (BK.) = STA. 7+11.20 (AH.)</b>													
LT	7+11.20	TO	9+18.00	207	24	4	2	2.1	92	42	4	207	
LT	9+77.00	TO	12+05.00	228	24	4	2	2.3	102	46	5	228	
LT	12+36.00	TO	12+62.20	26	24	4	2	0.3	12	6	1	26	
RT	7+11.20	TO	12+62.20	551	24	4	2	5.5	245	111	11	551	

US 51 SHOULDER SCHEDULE

LOCATION STATION TO STATION				LENGTH	ROADWAY WIDTH	SHOULDER WIDTH		EXCAVATING AND GRADING EXISTING SHOULDERS	HMA SHOULDERS, 8 INCH	BITUMINOUS MATERIALS (PR. CT.)	AGG. WEDGE SHOULDERS, TY. B	SHOULDER RUMBLE STRIPS, 8 INCH	NOTES
						HMA SHLDS.	AGG. SHLDS.						
				( FT )	( FT )	( FT )	( FT )	( UNIT )	( SQ YD )	( LBS )	( TON )	( FT )	
EQ. STA. 12+62.20 ( BK. ) = STA. 12+78.50 ( AH. )													
LT	12+78.50	TO	12+95.00	16.5	24	4	2	0.2	8	4	1	17	W. 8th St.
RT	12+78.50	TO	17+35.00	457	24	4	2	4.6	203	92	9	457	W. 6th St.
LT	13+36.00	TO	13+86.00	50	24	4	2	0.5	23	10	1	50	Comm. Ent.
LT	14+50.00	TO	15+32.00	82	24	4	2	0.8	37	17	2	82	W. 7th St.
LT	15+85.00	TO	17+63.00	178	24	4	2	1.8	80	36	4	178	W. 6th St.
LT	18+12.00	TO	69+96.50	5185	24	4	2	51.8	2305	1037	99	5185	
RT	18+12.00	TO	69+96.50	5185	24	4	2	51.8	2305	1037	99	5185	
EQ. STA. 69+96.50 ( BK. ) = STA. 70+00.00 ( AH. )													
LT	70+00.00	TO	86+28.00	1628	24	4	2	16.3	724	326	31	1628	Hardscrabble Rd.
RT	70+00.00	TO	99+19.00	2919	24	4	2	29.2	1298	584	56	2919	Kimme l Rd.
LT	86+75.00	TO	107+99.00	2124	24	4	2	21.2	944	425	41	2124	
RT	100+56.00	TO	107+99.00	743	24	4	2	7.4	331	149	15	743	
EQ. STA. 107+99.00 ( BK. ) = STA. 108+00.00 ( AH. )													
LT	108+00.00	TO	149+89.60	4190	24	4	2	41.9	1863	838	80	4190	
RT	108+00.00	TO	146+30.00	3830	24	4	2	38.3	1703	766	73	3830	City Lake Rd.
RT	146+88.00	TO	149+89.60	302	24	4	2	3.0	135	61	6	302	
EQ. STA. 149+89.60 ( BK. ) = STA. 149+89.90 ( AH. )													
LT	149+89.80	TO	196+80.00	4690	24	4	2	46.9	2085	939	90	4690	
RT	149+89.80	TO	196+80.00	4690	24	4	2	46.9	2085	939	90	4690	
OMISSION - STA. 196+80 TO STA. 220+00 ( INTERSECTON WITH IL. 154 )													
LT	220+00.00	TO	260+25.00	4025	24	4	2	40.3	1789	805	77	4025	Pintail Rd.
LT	260+92.00	TO	296+00.00	3508	24	4	2	35.1	1560	702	67	3508	
RT	220+00.00	TO	260+42.00	4042	24	4	2	40.4	1797	809	77	4042	Pintail Rd.
RT	260+82.00	TO	296+00.00	3518	24	4	2	35.2	1564	704	67	3518	
MAINLINE TOTALS								574	25,530	11,495	1,110	57,398	

**THERMOPLASTIC PAVEMENT MARKING SCHEDULE**

STATION TO STATION				THERMOPLASTIC PAVEMENT MARKING - LINE 4"			THERMOPLASTIC PAVEMENT MARKING - LINE 24"	THERMOPLASTIC PAVEMENT MARKING - LTRS. & SYMB.	TEMP. PAVEMENT MARKING - LINE 4"	TEMP. PAVEMENT MARKING - LINE 24"	TEMP. PAVEMENT MARKING - LTRS. & SYMB.	SHORT-TERM PAVEMENT MARKING	NOTES
				4 INCH WHITE (EDGE LINE)	4 INCH YELLOW (NO PASS ZONE)	4 INCH (SKIP-DASH)	24 INCH (STOP BAR)	RAILROAD CROSSINGS					
				FOOT	FOOT	FOOT	FOOT	SO FT					
MAINLINE: STA. -(4+35) TO STA. 296+00													
STATIONING FROM -(0+00) TO -(4+35) RUNS NORTH TO SOUTH													
LT. & RT.	-(4+35)	TO	-(0+00)	870	870			1,740			261		
RT	-(0+00)					12			12				
RT	-(1+25)					12			12				
RT	-(1+50)						61			61		RAILROAD SYMBOLS	
RT	-(1+75)					12			12				
LT	-(2+75)					12			12				
LT	-(2+52)						61			61		RAILROAD SYMBOLS	
LT	-(2+77)					12			12				
RT	-(4+35)					12			12				
EQ. STA. -(0+00) (BK.) = STA. 0+00 (AH.)													
OMISSION - STA. 0+00 TO STA. 1+10 (RAILROAD CROSSING)													
RT	1+10.0	TO	7+10.3	600				600					
LT	1+10.0	TO	7+10.3	460		12		460	12				
LT	1+10.0	TO	3+87.0		277		69	346			83		
	3+87.0	TO	7+10.3				81	81			97		
LT	3+28.0					12			12				
LT	3+53.0						61			61		RAILROAD SYMBOLS	
LT	3+78.0					12			12				
EQ. STA. 7+10.3 (BK.) = STA. 7+11.2 (AH.)													
LT	7+11.2	TO	12+62.2	480			138	618			165		
RT	7+11.2	TO	12+62.2	551				551					
		TO											
EQ. STA. 12+62.2 (BK.) = STA. 12+78.5 (AH.)													
LT	12+78.5	TO	69+96.5	5502				5,502					
RT	12+78.5	TO	69+96.5	5610				5,610					
	12+78.5	TO	69+96.5				1430	1,430			1715		
EQ. STA. 69+96.5 (BK.) = STA. 70+00.0 (AH.)													
LT	70+00.0	TO	107+99.0	3,706				3,706					
RT	70+00.0	TO	107+99.0	3,649				3,649					
RT	99+90.0												
RT	70+00.0	TO	107+99.0			30		30	30	0		STOP BAR FOR SIDE RD.	
							950	950			1140		
EQ. STA. 107+99.0 (BK.) = STA. 108+00.0 (AH.)													
LT	108+00.0	TO	149+89.6	4,190				4,190					
RT	108+00.0	TO	149+89.6	4,097				4,097					
	108+00.0	TO	149+89.6				1047	1,047			1257		

THERMOPLASTIC PAVEMENT MARKING SCHEDULE

STATION TO STATION				THERMOPLASTIC PAVEMENT MARKING - LINE 4"			THERMOPLASTIC PAVEMENT MARKING - LINE 24"	THERMOPLASTIC PAVEMENT MARKING - LTRS. & SYMB.	TEMP. PAVEMENT MARKING - LINE 4"	TEMP. PAVEMENT MARKING - LINE 24"	TEMP. PAVEMENT MARKING - LTRS. & SYMB.	SHORT-TERM PAVEMENT MARKING	NOTES
				4 INCH WHITE (EDGE LINE)	4 INCH YELLOW (NO PASS ZONE)	4 INCH (SKIP-DASH)	24 INCH (STOP BAR)	RAILROAD CROSSINGS					
				FOOT	FOOT	FOOT	FOOT	SO FT	FOOT	FOOT	SO FT	FOOT	
EO. STA. 149+89.6 (BK.) = STA. 149+89.8 (AH.)													
LT	149+89.8	TO	196+80.0	4,610				4,610					
RT	149+89.8	TO	196+80.0	4,690				4,690					
	149+89.8	TO	196+80.0			1173		1,173			1407		
RT	193+60.0	TO	196+80.0		320			320					
OMISSION - STA. 196+80 TO STA. 220+00 (IL 154 INTERSECTION)													
LT	220+00.0	TO	296+00.0	7,530		1900		9,430			2280		
RT	220+00.0	TO	296+00.0	7,530				7,530					
LT	220+00.0	TO	224+40.0		440			440					
SIDE ROADS													
LT	2+80		BAKERY BLVD.				30		30				
LT	9+50		THORWELL ST.				12		12				
LT	13+16		8TH ST.				12		12				
LT	15+54		7TH ST.				12		12				
LT	17+86		6TH ST.				12		12				
RT	17+86		6TH ST.				12		12				
LT	86+50		HARDSCRABBLE RD.				12		12				
RT	99+96		KIMMEL RD.				36	61	36				RR SYMB. & 3-STOP BARS
RT	146+63		CITY LAKE RD.				12		12				
LT	153+91		BAILEY LANE				12		12				
LT	260+60		PINTAIL RD.				12		12				
RT	260+60		PINTAIL RD.				12		12				
SUB-TOTALS				54,075	1,907	6,787	324	244	62,769	324	183	8,405	
TOTAL				62,769			324	244	62,769	324	183	8,405	

PROPOSED PROJECT BEGINS  
STA. 138+57 (NEAR W. HIGH ST.)  
(FAP 322/US 51)

PROP. HMA SHOULDERS 8 INCH  
AND PROP. SHOULDER RUMBLE  
STRIPS, 8 INCH - BEGINS  
AT LT. STA. 139+18  
PROP. AGG. WEDGE SHOULDERS,  
TYPE B (2' WIDE TYP.)  
BEGINS AT LT. STA. 139+18

PROP. HMA SHOULDERS 8 INCH  
AND PROP. SHOULDER RUMBLE  
STRIPS, 8 INCH  
ENDS AT LT. & RT.  
STA. -(4+95)  
PROP. AGG. WEDGE SHOULDERS,  
TYPE B (2' WIDE TYP.)  
ENDS AT LT. & RT.  
STA. -(4+95)

PROP. HMA SHOULDERS 8 INCH  
AND PROP. SHOULDER RUMBLE  
STRIPS, 8 INCH - BEGINS  
AT RT. STA. 138+57  
PROP. AGG. WEDGE SHOULDERS,  
TYPE B (2' WIDE TYP.)  
BEGINS AT RT. STA. 138+57

SEE NOTE 1,  
THIS SHEET.

SEE NOTE 1,  
THIS SHEET.

SEE NOTE 1,  
THIS SHEET.

PROP. HMA SHOULDERS 8 INCH  
AND PROP. SHOULDER RUMBLE  
STRIPS, 8 INCH  
BEGINS AT LT. & RT.  
STA. -(4+35)  
PROP. AGG. WEDGE SHOULDERS,  
TYPE B (2' WIDE TYP.)  
BEGINS AT LT. & RT.  
STA. -(4+35)

NOTE 1:  
FOR BEGINNING AND ENDING  
STATIONING OF PROPOSED  
SHOULDERS, SEE SCHEDULE  
SHT'S 11-12.

SEE NOTE 1,  
THIS SHEET.

PROPOSED MILLING AND  
RESURFACING BEGINS  
STA. -(4+35) (BUTT JOINT)  
(FAP 322/US 51)

FILE NAME =	USER NAME = mccordkr	DESIGNED -	REVISED -
pw:\IL\084EBIDINTEG\illinois.gov\PWIDOT\Documents\IDOT Offices\District 9\Projects\78476\Drawings\CAD\Drawings\78476.dgn		DRAWN -	REVISED -
		CHECKED -	REVISED -
Default	PLOT DATE = 11/23/2015	DATE -	REVISED -

STATE OF ILLINOIS  
DEPARTMENT OF TRANSPORTATION

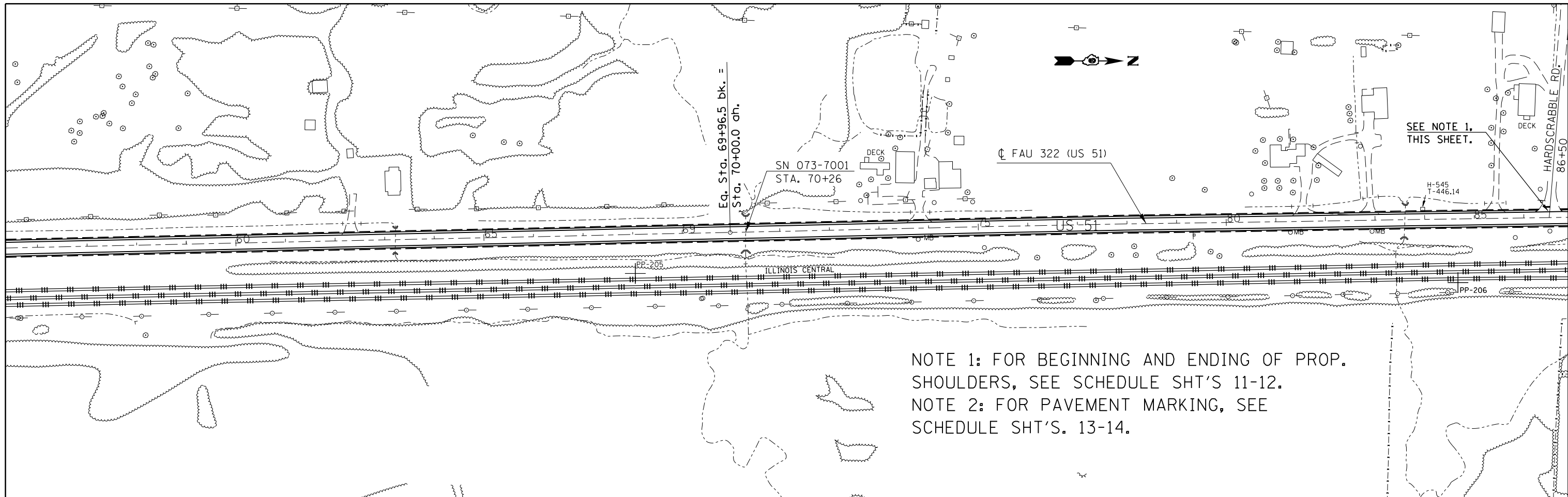
PLAN LAYOUT 1

SCALE: SHEET OF SHEETS STA. TO STA.

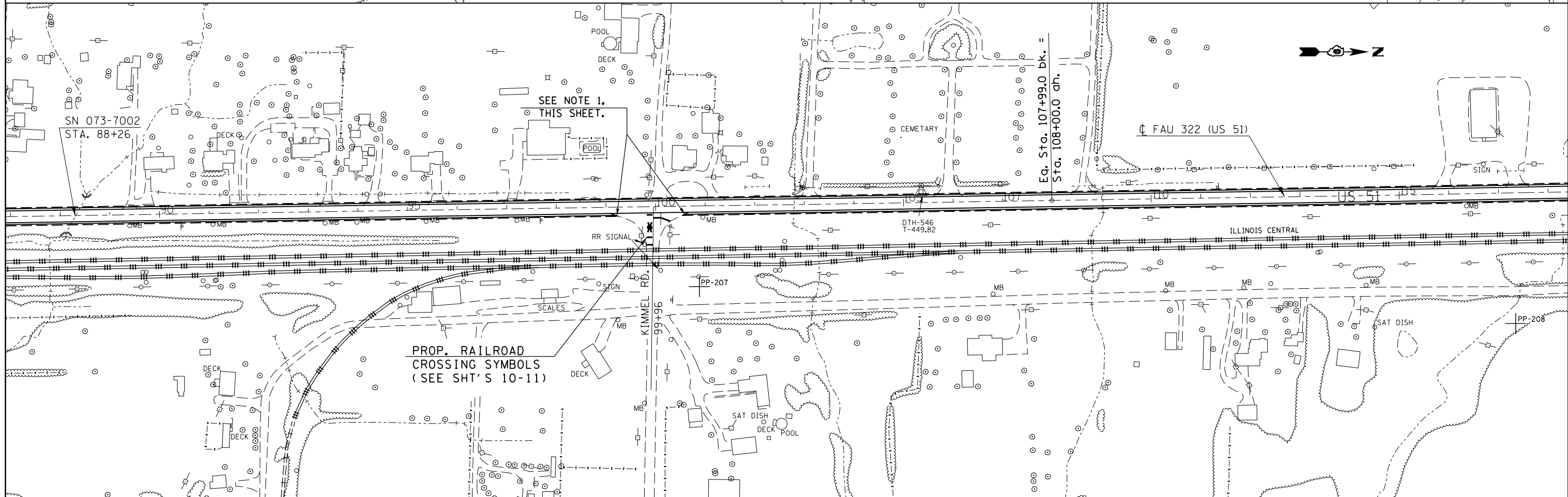
F.A.P. RTE.	SECTION	COUNTY	TOTAL SHEETS	SHEET NO.
322	5RS-3	PERRY	23	15
CONTRACT NO. 78476				
ILLINOIS FED. AID PROJECT				





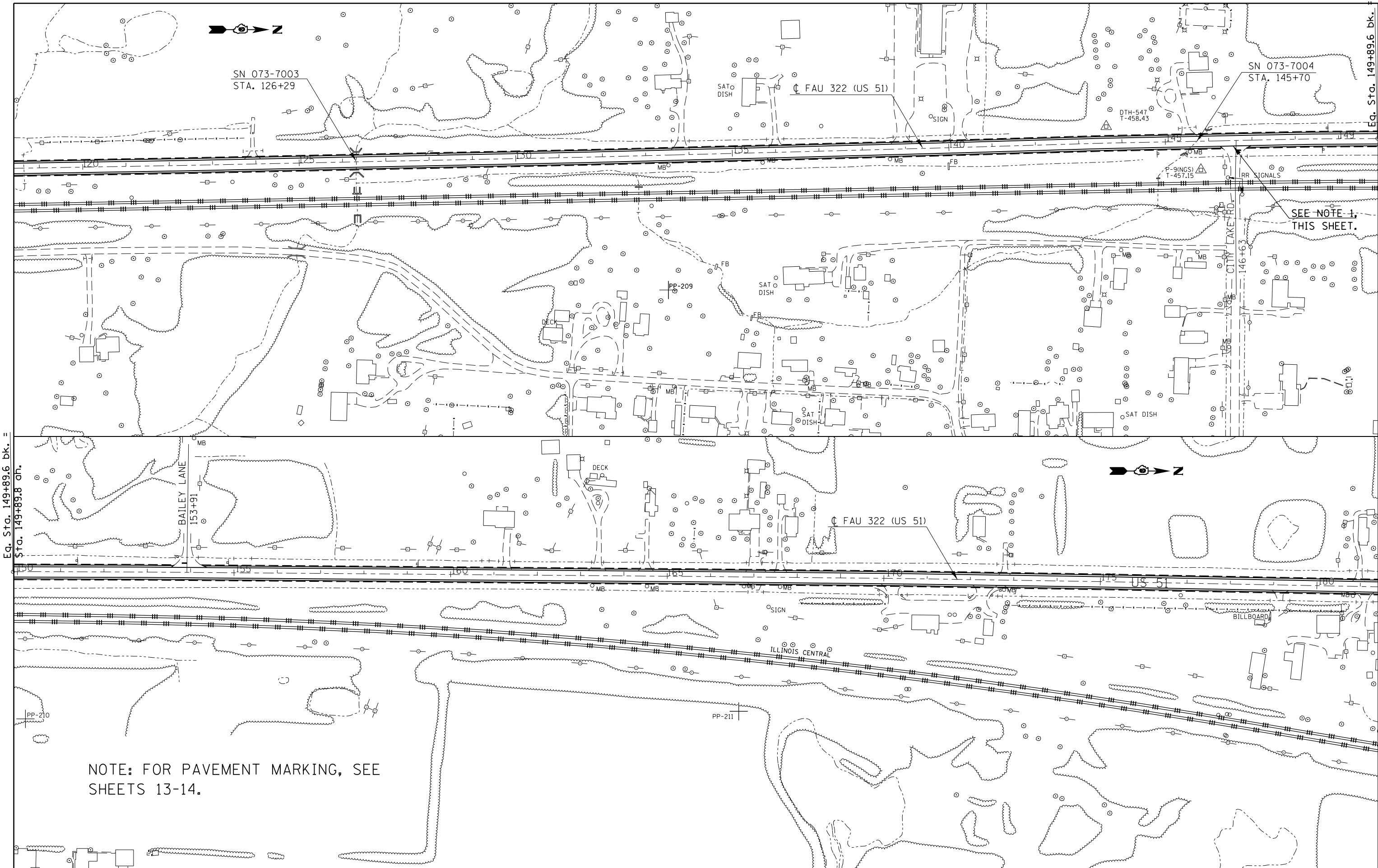


NOTE 1: FOR BEGINNING AND ENDING OF PROP. SHOULDERS, SEE SCHEDULE SHT'S 11-12.  
 NOTE 2: FOR PAVEMENT MARKING, SEE SCHEDULE SHT'S. 13-14.



PROP. RAILROAD CROSSING SYMBOLS (SEE SHT'S 10-11)

FILE NAME =	USER NAME = mccordkr	DESIGNED -	REVISED -	<b>STATE OF ILLINOIS DEPARTMENT OF TRANSPORTATION</b>	<b>PLAN LAYOUT 2</b>				F.A.P. RTE.	SECTION	COUNTY	TOTAL SHEETS	SHEET NO.			
pw:\IL084EBIDINTEG\Illinois.gov\PI\DOT\Documents\IDOT Offices\District 9\Projects\78476\Drawings\CAD\Sheets\78476_sht.dgn		CHECKED -	REVISED -		SCALE:	SHEET	OF	SHEETS	STA.	TO	STA.	322	5RS-3	PERRY	23	17
Default		DATE -	REVISED -													
	PLOT SCALE = 200.0000' / in.															
	PLOT DATE = 11/23/2015															
											CONTRACT NO. 78476		ILLINOIS FED. AID PROJECT			



NOTE: FOR PAVEMENT MARKING, SEE SHEETS 13-14.

Eq. Sta. 149+89.6 bk. = Sta. 149+89.8 ch.

Eq. Sta. 149+89.6 bk. = Sta. 149+89.8 ch.

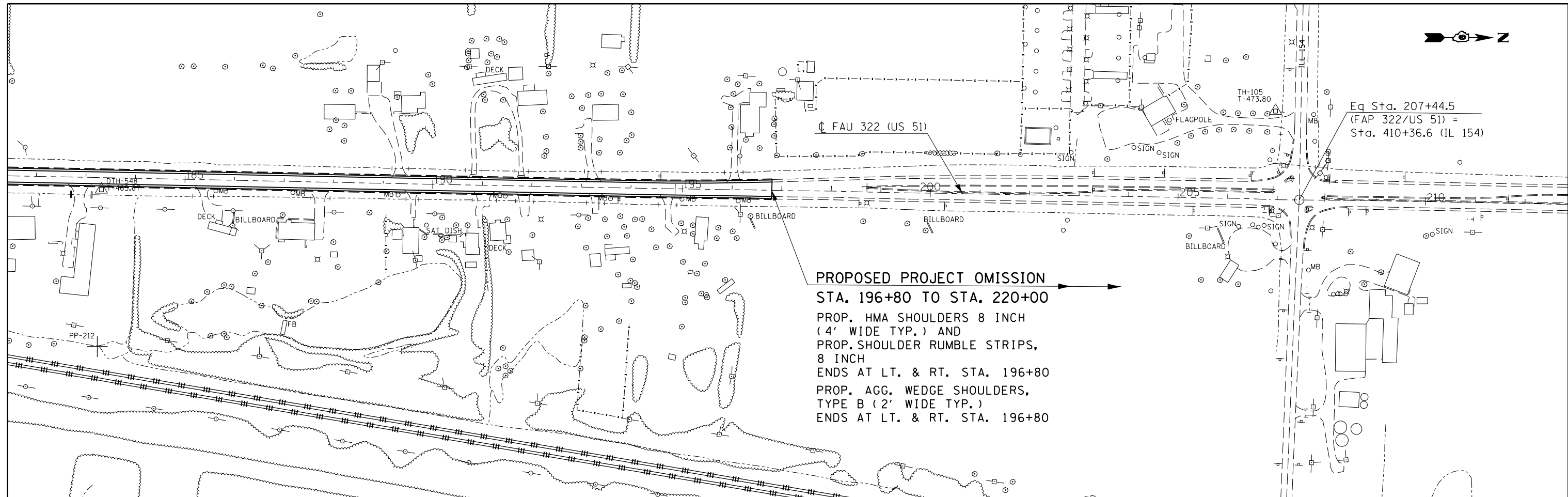
FILE NAME =	USER NAME = mccordkr	DESIGNED -	REVISED -
pw\11\084EBIDINTEG\illinois.gov\PIWIDOT\Documents\IDOT Offices\District 9\Projects\78476\DRAWING\CAD\sheets\78476_sht.dgn		REVISED -	REVISED -
PLOT SCALE = 200.0000' / in.	CHECKED -	REVISED -	REVISED -
Default	DATE -	REVISED -	REVISED -

**STATE OF ILLINOIS  
DEPARTMENT OF TRANSPORTATION**

**PLAN LAYOUT 3**

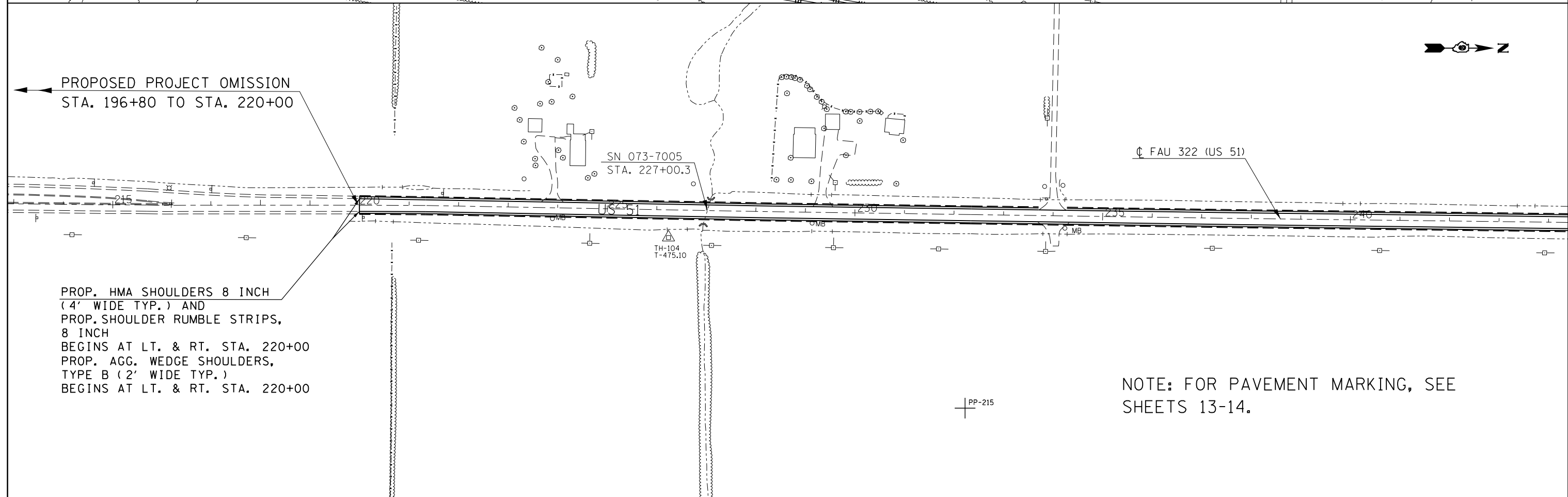
SCALE: SHEET OF SHEETS STA. TO STA.

F.A.P. RTE.	SECTION	COUNTY	TOTAL SHEETS	SHEET NO.
322	5RS-3	PERRY	23	18
CONTRACT NO. 78476				
ILLINOIS FED. AID PROJECT				



**PROPOSED PROJECT OMISSION**  
**STA. 196+80 TO STA. 220+00**  
 PROP. HMA SHOULDERS 8 INCH  
 (4' WIDE TYP.) AND  
 PROP. SHOULDER RUMBLE STRIPS,  
 8 INCH  
 ENDS AT LT. & RT. STA. 196+80  
 PROP. AGG. WEDGE SHOULDERS,  
 TYPE B (2' WIDE TYP.)  
 ENDS AT LT. & RT. STA. 196+80

Eq Sta. 207+44.5  
 (FAP 322/US 51) =  
 Sta. 410+36.6 (IL 154)

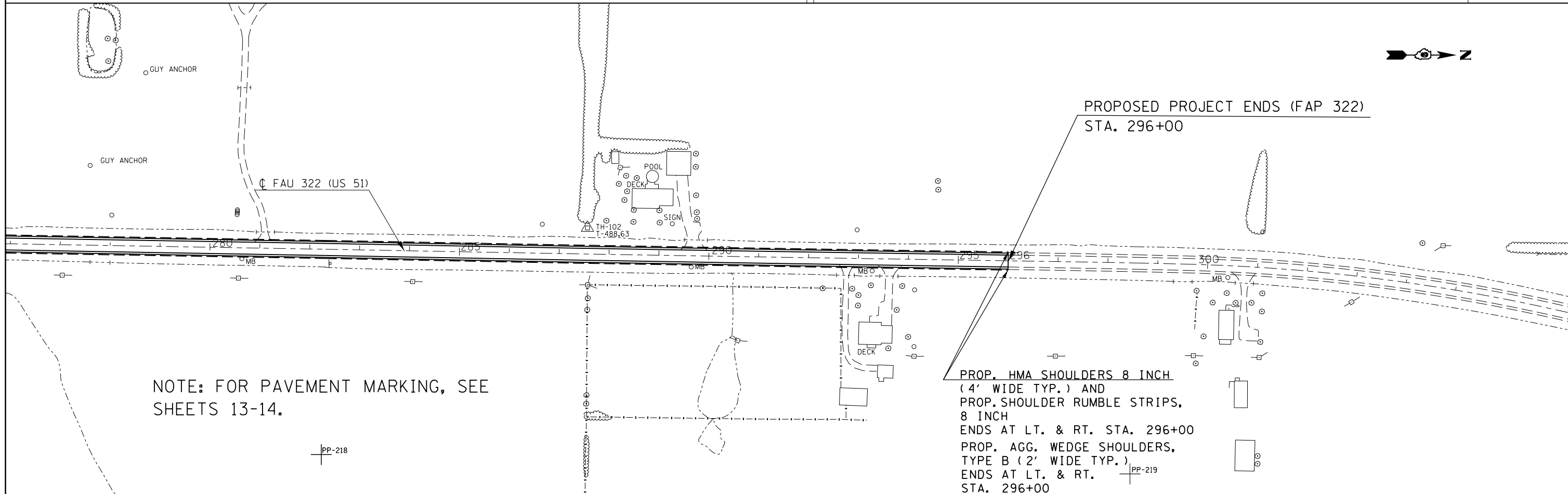
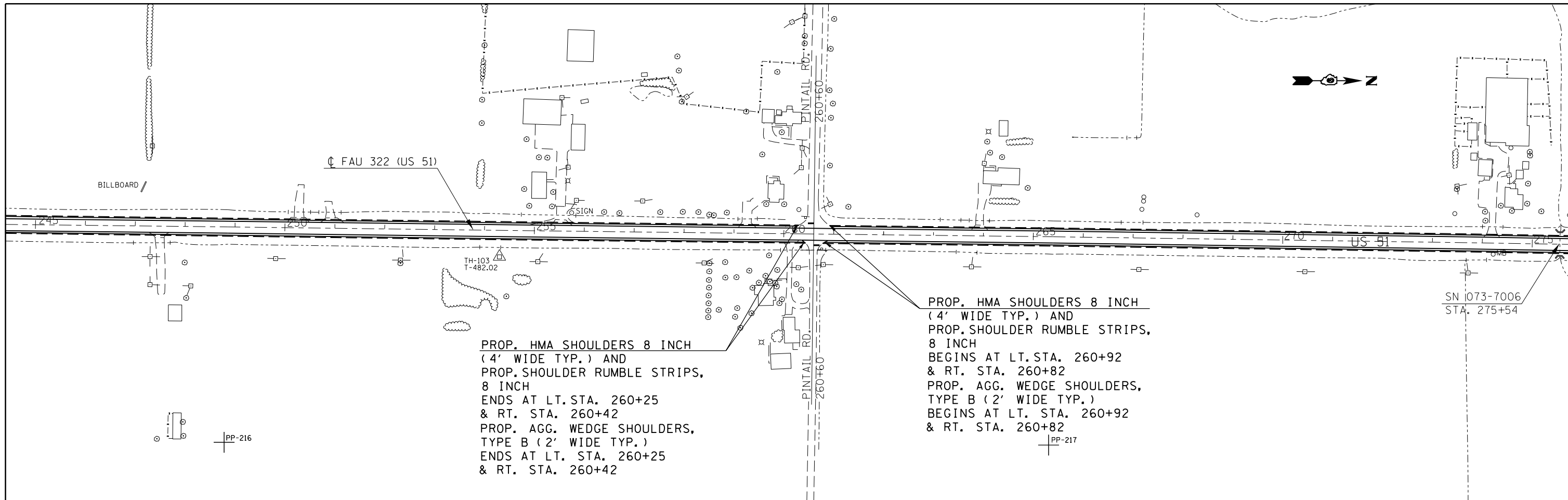


**PROPOSED PROJECT OMISSION**  
**STA. 196+80 TO STA. 220+00**

PROP. HMA SHOULDERS 8 INCH  
 (4' WIDE TYP.) AND  
 PROP. SHOULDER RUMBLE STRIPS,  
 8 INCH  
 BEGINS AT LT. & RT. STA. 220+00  
 PROP. AGG. WEDGE SHOULDERS,  
 TYPE B (2' WIDE TYP.)  
 BEGINS AT LT. & RT. STA. 220+00

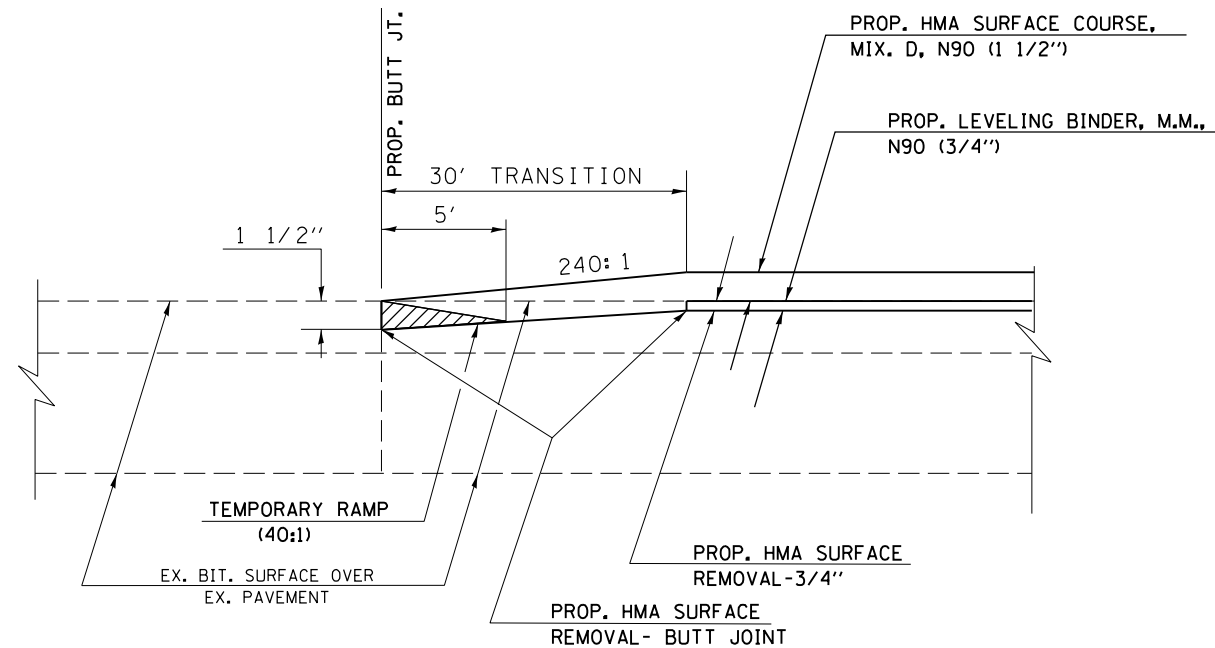
NOTE: FOR PAVEMENT MARKING, SEE  
 SHEETS 13-14.

FILE NAME =	USER NAME = mccordkr	DESIGNED -	REVISED -	<b>STATE OF ILLINOIS DEPARTMENT OF TRANSPORTATION</b>	<b>PLAN LAYOUT 4</b>				F.A.P. RTE.	SECTION	COUNTY	TOTAL SHEETS	SHEET NO.
pw:\IL\084EBIDINTEG\illinois.gov\PIWIDOT\Documents\IDOT Offices\District 9\Projects\78476\Drawings\CAD\Sheets\78476_sht.dgn		DRAWN -	REVISED -		322	5RS-3	PERRY	23	19				
Default	PLOT SCALE = 200.0000' / in.	CHECKED -	REVISED -		CONTRACT NO. 78476				ILLINOIS FED. AID PROJECT				
	PLOT DATE = 11/23/2015	DATE -	REVISED -		SCALE:	SHEET	OF	SHEETS	STA.	TO	STA.		



FILE NAME =	USER NAME = mccordkr	DESIGNED -	REVISED -	<b>STATE OF ILLINOIS DEPARTMENT OF TRANSPORTATION</b>	<b>PLAN LAYOUT 5</b>				F.A.P. RTE.	SECTION	COUNTY	TOTAL SHEETS	SHEET NO.
pw:\11\084EBIDINTEG.illinois.gov\PIWIDOT\Documents\IDOT Offices\District 9\Projects\78476\Drawings\CAD\Sheets\78476_sht.dgn		CHECKED -	REVISED -		322	5RS-3	PERRY	23	20				
Default	PLOT SCALE = 200.0000' / in.	DATE -	REVISED -		SCALE: SHEET OF SHEETS STA. TO STA.				CONTRACT NO. 78476				
	PLOT DATE = 11/23/2015		REVISED -		ILLINOIS FED. AID PROJECT								

DETAIL FOR BUTT JOINTS  
 AT BEGINNING & END OF PROJECT  
 AND AT RAILROAD OMISSION AND  
 INTERSECTION OMISSION



TO BE USED:

- STA. -(4+35) (BEGINNING OF MILLING AND RESURFACING SECTION OF PROJECT)
- STA. 0+00
- STA. 1+10
- STA. 196+80
- STA. 220+00
- STA. 296+00 (END OF PROJECT)

FILE NAME =	USER NAME = mccordkr	DESIGNED -	REVISED -
p:\11\084EBIDINTEG.illinois.gov\PWIDOT\Documents\DOT Offices\District 9\Projects\78476\CAD\Drawings\78476.sht.dgn		DRAWN -	REVISED -
Default	PLOT SCALE = 200.0000' / in.	CHECKED -	REVISED -
	PLOT DATE = 11/23/2015	DATE -	REVISED -

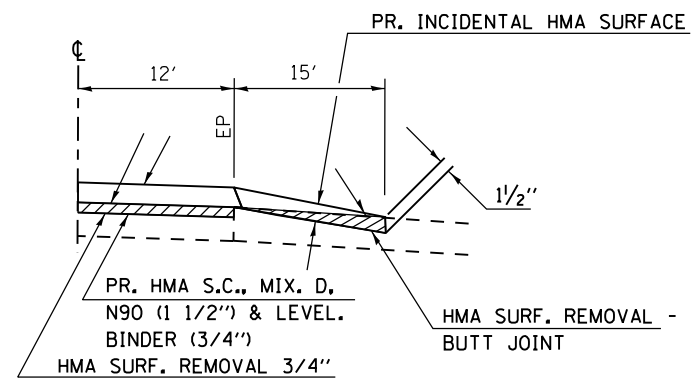
STATE OF ILLINOIS  
 DEPARTMENT OF TRANSPORTATION

DETAILS - BUTT JOINTS

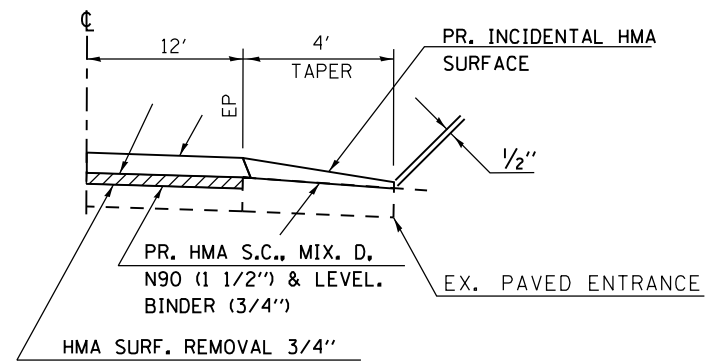
SCALE: SHEET OF SHEETS STA. TO STA.

F.A.P. RTE.	SECTION	COUNTY	TOTAL SHEETS	SHEET NO.
322	5RS-3	PERRY	23	21
ILLINOIS FED. AID PROJECT			CONTRACT NO. 78476	

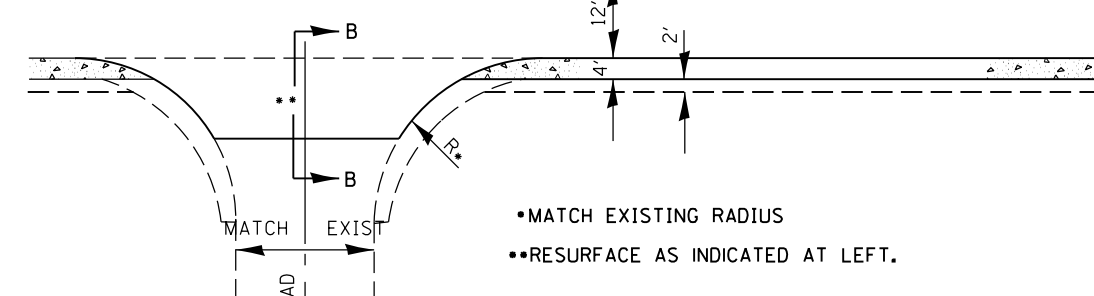
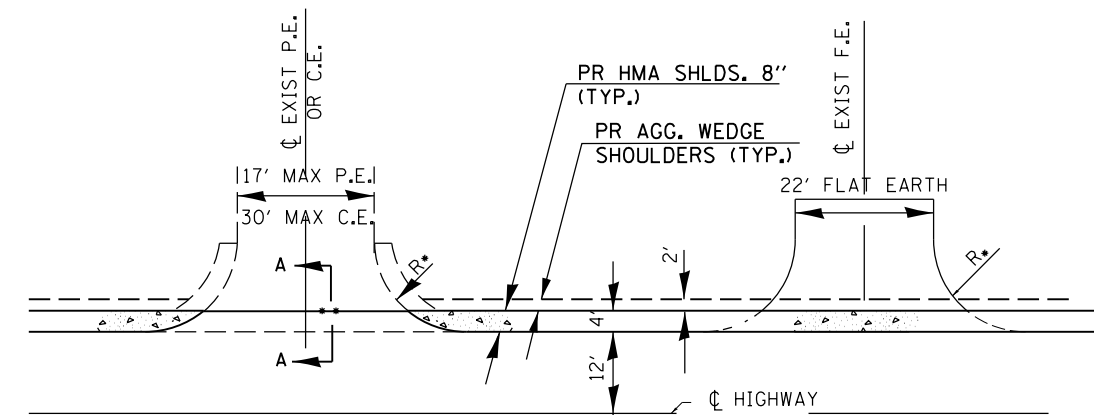
# SIDEROAD AND ENTRANCE DETAILS THRU MILLED AND RESURFACED SECTION



SIDE ROAD SEC. B-B  
EX. BIT. OR CONC. SURFACE



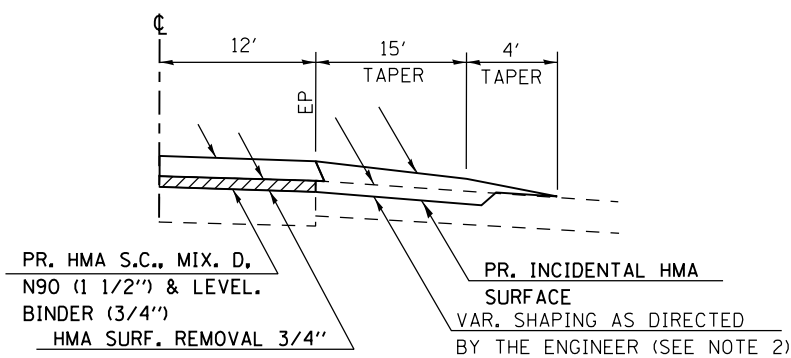
O&C, BIT. OR CONC. PE OR CE  
SEC. A-A



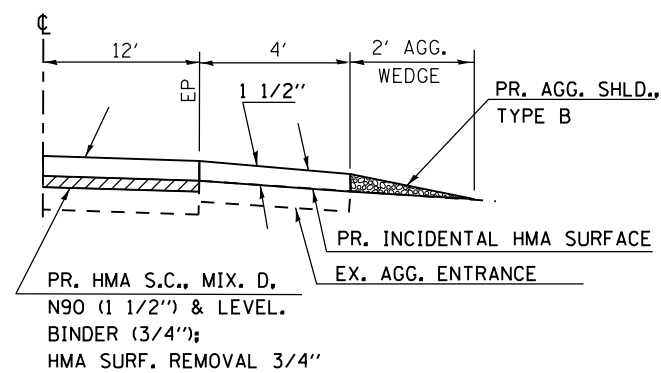
- MATCH EXISTING RADIUS
- RESURFACE AS INDICATED AT LEFT.

ENTRANCE SCHEDULE

TYPE	NUMBER OF ENTRANCES
P.E.	65
C.E.	16



SIDE ROAD SEC. B-B  
EX. OIL & CHIP SURFACE  
(SEE NOTE 1)



AGGREGATE PE OR CE  
SEC. A-A

## NOTES

1. IF EXISTING SUBBASE IS INADEQUATE, AS DETERMINED BY THE ENGINEER, THE SIDE ROADS SHALL BE CORED OUT AND AGGREGATE SUBBASE, TYPE B SHALL BE PLACED FOR BASE. THE COST OF CORING OUT THE SIDE ROAD AND ANY AGGREGATE BASE COURSE SHALL BE PAID FOR AS SPECIFIED IN ART. 109.04 OF THE STANDARD SPECIFICATIONS FOR ROAD AND BRIDGE CONSTRUCTION. IF EXISTING SUBBASE IS DETERMINED TO BE ADEQUATE, THE PREPARATION OF THE BASE SHALL BE CONSTRUCTED ACCORDING TO ARTICLE 406.09.
2. VARIABLE SHAPING IS INCLUDED IN THE COST OF INCIDENTAL HOT-MIX ASPHALT SURFACE.

FILE NAME =	USER NAME = mccordkr	DESIGNED -	REVISED -
pw:\11\084EBIDINTEG.illinois.gov\PWIDOT\Documents\DOT Offices\District 9\Projects\78476\Drawings\CAD\Sheets\78476.sht.dgn		REVISION	REVISION
Default	PLOT SCALE = 200.0000' / in.	CHECKED -	REVISED -
	PLOT DATE = 11/23/2015	DATE -	REVISED -

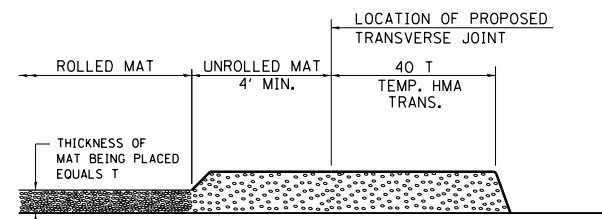
**STATE OF ILLINOIS  
DEPARTMENT OF TRANSPORTATION**

**SIDE ROAD AND ENTRANCE  
DETAILS**

SCALE: SHEET OF SHEETS STA. TO STA.

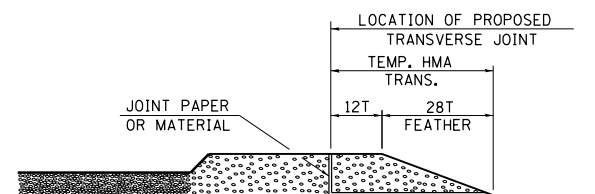
F.A.P. RTE.	SECTION	COUNTY	TOTAL SHEETS	SHEET NO.
322	5RS-3	PERRY	23	22
CONTRACT NO. 78476				
ILLINOIS FED. AID PROJECT				

## TEMPORARY HOT-MIX ASPHALT TRANSITIONS



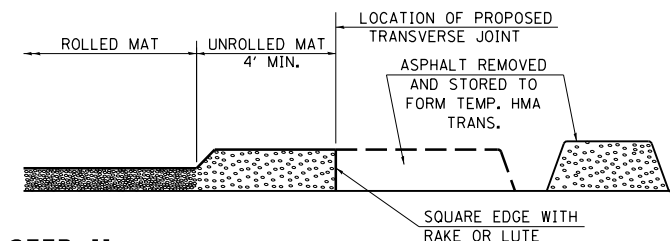
### STEP I

1. PLACE HOT-MIX ASPHALT MAT, LENGTH 40 TIMES THE THICKNESS OF THE MAT BEING PLACED PAST THE PROPOSED TRANSVERSE JOINT LOCATION USING NORMAL OPERATING PROCEDURES.
2. EXTREME CARE SHOULD BE TAKEN TO MAINTAIN ENOUGH MATERIAL IN FRONT OF THE SCREED TO MAINTAIN REQUIRED PAVING DEPTH.



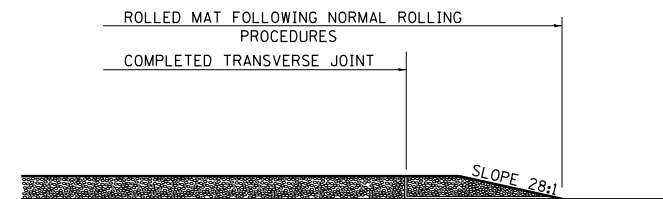
### STEP III

1. JOINT PAPER OR OTHER PRESELECTED JOINT MATERIAL IS THEN PLACED IN THE CLEARED AREA AND THE EXCESS ASPHALT USED TO HAND FORM A TRANSITION TO THE DIMENSIONS SHOWN ABOVE.
2. NOTE THAT IN CONSTRUCTING THE TRANSITION, THE MAT DEPTH IS CONTINUED AS PART OF THE TRANSITION BEFORE FORMING THE FEATHER.



### STEP II

1. MOVE THE PAVER OUT OF THE WAY AND REMOVE THE ASPHALT FROM THE AREA OF THE PROPOSED TEMPORARY HOT-MIX ASPHALT TRANSITION.
2. SQUARE UP THE END OF THE MAT WITH A RAKE OR LUTE.
3. NOTE THAT THE MAT WITHIN 4' OF THE END OF JOINT IS NOT TO BE ROLLED AT THIS TIME.



### STEP IV

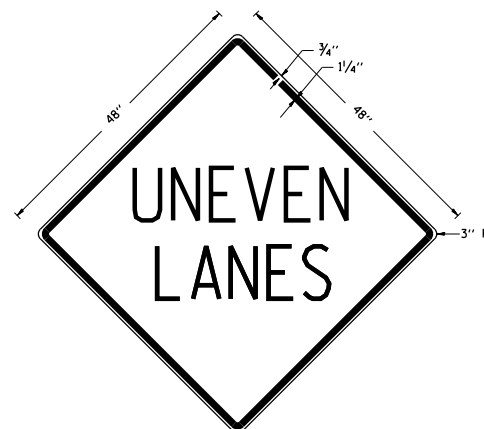
1. COMPLETE TEMPORARY TRANSITION BY ROLLING.
2. TO RESUME PAVING, AT THE JOINT, REMOVE TEMPORARY TRANSITION AND DISPOSE OF THE MATERIAL ACCORDING TO ART. 202.03 OF THE STD. SPECS. (COST INCLUDED IN THE CONTRACT).
3. CONSTRUCTING THE TEMPORARY TRANSITIONS WILL NOT BE PAID FOR SEPARATELY IN ACCORDANCE WITH ARTICLE 406.14 OF THE STANDARD SPECIFICATIONS.

REVISIONS	
REDRAWN	2-15-89
REVISED	8-16-94
REVISED	01-09-07
RESIZED	05-8-08
REVISED	05-16-13

STD. 9-26

## UNEVEN LANES SIGN

W8-11 (48" x 48")



### COLORS:

LEGEND AND BORDER - BLACK NON-REFLECTORIZED  
BACKGROUND - ORANGE REFLECTORIZED

**NOTE:** PRIOR TO ALLOWING TRAFFIC ON ANY PORTION OF THE ROADWAY THAT HAS BEEN COLDMILLED OR BEFORE RESURFACING OPERATIONS BEGIN, THE CONTRACTOR SHALL HAVE ERECTED "UNEVEN PAVEMENT" SIGNS THAT CONFORM TO THE ABOVE DETAILS. A MINIMUM OF ONE SIGN AT EACH END OF THE IMPROVEMENT WILL BE REQUIRED. THE CONTRACTOR SHALL MAINTAIN THE "UNEVEN PAVEMENT" SIGNS UNTIL THE RESURFACING OPERATIONS ARE COMPLETED.

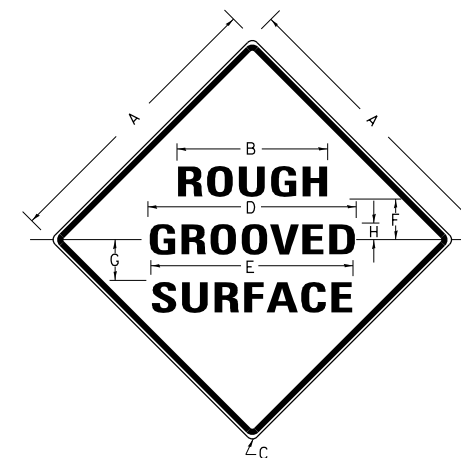
IF AT ANY TIME THE SIGNS ARE IN PLACE BUT NOT APPLICABLE, THEY SHALL BE TURNED FROM THE VIEW OF MOTORISTS OR COVERED AS DIRECTED BY THE ENGINEER.

THE COST OF FURNISHING, ERECTING, MAINTAINING, AND REMOVING THE REQUIRED SIGNS SHALL BE INCLUDED IN THE CONTRACT.

REVISIONS	
DRAWN	2-15-89
REVISED	4-06-93
REDESIGNED	
RESIZED	
REVIEWED	5-17-13

STD. 9-41

## ILLINOIS STANDARD



### COLORS:

LEGEND AND BORDER- BLACK NON-REFLECTORIZED  
BACKGROUND- ORANGE REFLECTORIZED

SIGN SIZE	DIMENSIONS							
	A	B	C	D	E	F	G	H
48x48	48.0	24.1	3.0	34.0	33.0	6.0	13.0	3.5

SIGN SIZE	SERIES LINES			MAR-GIN	BOR-DER	BLANK STD.
	1	2	3			
48x48	7C	7C	7C	0.8	1.2	B4-48D

ALL DIMENSIONS IN INCHES

### NOTES:

PRIOR TO ALLOWING TRAFFIC ON ANY PORTION OF THE ROADWAY THAT HAS BEEN COLDMILLED, THE CONTRACTOR SHALL HAVE ERECTED "ROUGH GROOVED SURFACE" SIGNS THAT CONFORM TO THE ABOVE DETAILS. A MINIMUM OF ONE SIGN AT EACH END OF THE IMPROVEMENT WILL BE REQUIRED. THE CONTRACTOR SHALL MAINTAIN THE "ROUGH GROOVED SURFACE" SIGNS UNTIL THE COLDMILLED SURFACE IS COVERED WITH LEVELING BINDER OR SURFACE COURSE.

IF AT ANY TIME THE SIGNS ARE IN PLACE BUT NOT APPLICABLE, THEY SHALL BE TURNED FROM THE VIEW OF MOTORISTS OR COVERED AS DIRECTED BY THE ENGINEER.

THE COST OF FURNISHING, ERECTING, MAINTAINING, AND REMOVING THE REQUIRED SIGNS SHALL BE INCLUDED IN THE CONTRACT.

REVISIONS	
REDRAWN	2-15-89
REVISED	4-6-93
REVISED	3-27-08
REVIEWED	5-17-13

STD. 9-39

FILE NAME =	USER NAME = mccordkr	DESIGNED -	REVISED -
p:\11\084EBIDINTEG\illinois.gov\PIWIDOT\Documents\DOT Offices\District 9\Projects\78478\Drawings\CAD\Sheets\78478.sht.dgn		DRAWN -	REVISED -
Default	PLOT SCALE = 200.0000' / in.	CHECKED -	REVISED -
	PLOT DATE = 11/23/2015	DATE -	REVISED -

**STATE OF ILLINOIS  
DEPARTMENT OF TRANSPORTATION**

DETAILS - TEMP. HMA TRANSITIONS, UNEVEN LANE SIGN, AND ROUGH GROOVED SURFACE SIGN			
SCALE:	SHEET	OF SHEETS	STA. TO STA.

F.A.P. RTE.	SECTION	COUNTY	TOTAL SHEETS	SHEET NO.
322	5RS-3	PERRY	23	23
CONTRACT NO. 78476				
ILLINOIS FED. AID PROJECT				