

GENERAL NOTES

1. ALL REFERENCES TO "STANDARD SPECIFICATIONS" IN THESE GENERAL NOTES SHALL BE INTERPRETED TO MEAN "STANDARD SPECIFICATIONS FOR ROAD AND BRIDGE CONSTRUCTION" ADOPTED BY THE ILLINOIS DEPARTMENT OF TRANSPORTATION, JANUARY 1, 2012.
2. ALL REFERENCES TO "ENGINEER" SHALL BE INTERPRETED TO MEAN THE RESIDENT ENGINEER.
3. PRIOR TO COMMENCEMENT OF CONSTRUCTION, THE CONTRACTOR SHALL VERIFY ALL DIMENSIONS AND CONDITIONS AFFECTING THEIR WORK WITH THE ACTUAL CONDITIONS AT THE JOB SITE. THE CONTRACTOR MUST VERIFY THE ENGINEER'S LINE AND GRADE STAKES. IF THERE ARE DISCREPANCIES FROM WHAT IS SHOWN ON THE CONSTRUCTION PLANS, HE MUST IMMEDIATELY REPORT SAME TO THE ENGINEER BEFORE DOING ANY WORK, OTHERWISE THE CONTRACTOR ASSUMES FULL RESPONSIBILITY. IN THE EVENT OF DISAGREEMENT BETWEEN THE CONSTRUCTION PLANS, STANDARD SPECIFICATIONS AND/OR SPECIAL DETAILS, THE CONTRACTOR SHALL SECURE WRITTEN INSTRUCTIONS FROM THE ENGINEER PRIOR TO PROCEEDING WITH ANY PART OF THE WORK AFFECTED BY OMISSIONS OR DISCREPANCIES. FAILING TO SECURE SUCH INSTRUCTIONS, THE CONTRACTOR WILL BE CONSIDERED TO HAVE PROCEEDED AT HIS OWN RISK AND EXPENSE IN THE EVENT OF ANY DOUBT OR QUESTION ARISING WITH RESPECT TO THE TRUE MEANING OF THE CONSTRUCTION PLANS OR SPECIFICATIONS, THE DECISION OF THE ENGINEER SHALL BE FINAL AND CONCLUSIVE.
4. IT IS THE CONTRACTOR'S RESPONSIBILITY TO ASCERTAIN EXISTING FIELD CONDITIONS PRIOR TO BIDDING ON THE PROJECT.
5. BEFORE STARTING ANY EXCAVATION, THE CONTRACTOR SHALL CALL "JULIE" (JOINT UTILITY LOCATION INFORMATION FOR EXCAVATION) AT 8-1-1, THE VILLAGE OF HANOVER PARK AT 630-823-5600, AND THE FOREST PRESERVE DISTRICT OF DUPAGE COUNTY AT 630-871-6404 FIVE DAYS PRIOR TO EXCAVATION FOR FIELD LOCATIONS OF BURIED UTILITIES (48 HOURS NOTIFICATION IS REQUIRED). THE CONTRACTOR SHALL ALSO CONTACT THE VILLAGE OF HANOVER PARK PUBLIC WORKS DEPARTMENT WATER DIVISION AT 630-823-5700 48 HOURS PRIOR TO ALL WATER MAIN SHUTOFFS.
6. SAW CUTTING OF PAVEMENTS, SIDEWALK, ETC. SHALL BE TO FULL DEPTH AND SHALL RESULT IN A CLEAN STRAIGHT EDGE ON THE PORTION REMAINING. ALL SAW CUTTING SHALL BE CONSIDERED INCLUDED IN THE COST OF THE ITEM REMOVED.
7. OFFSET LOCATIONS GIVEN IN THE PLANS ARE FROM THE TRAIL CENTERLINE.
8. WHEN REMOVING PAVEMENT, CURB AND GUTTER, SHOULDER, AND/OR ANY OTHER STRUCTURES, THE USE OF ANY TYPE OF CONCRETE BREAKERS WHICH MIGHT DAMAGE THE UNDERGROUND PUBLIC OR PRIVATE UTILITIES WILL NOT BE PERMITTED. UNDER NO CIRCUMSTANCES WILL THE USE OF A FROST BALL BE PERMITTED.
9. THE CONTRACTOR SHALL NOT USE THE GREENBROOK ELEMENTARY SCHOOL PROPERTY TO ACCESS THE EAST SIDE OF THE KEENEYVILLE DITCH. THE CONTRACTOR SHALL USE A METHOD APPROVED BY THE ENGINEER TO EITHER CROSS THE KEENEYVILLE DITCH OR FIND ALTERNATE ACCESS TO THE EAST SIDE OF THE KEENEYVILLE DITCH. THIS WORK SHALL BE INCLUDED IN THE COST OF MOBILIZATION.

UTILITES NOTES

1. THE CONTRACTOR SHALL BE RESPONSIBLE FOR CONTACTING THE OWNERS OF ALL UTILITIES PRIOR TO CONSTRUCTION TO DETERMINE THE LOCATION OF ALL UTILITY EQUIPMENT. THE CONTRACTOR SHALL COOPERATE WITH ALL UTILITY OWNERS IN ACCORDANCE WITH THE STANDARD SPECIFICATIONS IF UTILITY RELOCATION, ADJUSTMENT, OR PROTECTION IS NECESSARY.
2. THE LOCATION OF EXISTING UNDERGROUND DRAINAGE STRUCTURES, STORM SEWERS, WATER MAINS, SANITARY SEWERS, AND OTHER PUBLIC UTILITIES AS SHOWN ON THE PLANS IS APPROXIMATE AND THEIR EXACT LOCATION IS TO BE DETERMINED IN THE FIELD BY THE CONTRACTOR. THIS WORK SHALL BE CONSIDERED INCLUDED IN THE UNIT BID PRICES OF THE CONTRACT, AND NO ADDITIONAL COMPENSATION WILL BE ALLOWED.
3. THE CONTRACTOR SHALL BE RESPONSIBLE FOR THE PROTECTION OF ALL UNDERGROUND AND SURFACE UTILITIES EVEN THOUGH THEY MIGHT NOT BE SHOWN ON THE PLANS. ALL UTILITY PROPERTY DAMAGED DURING CONSTRUCTION SHALL BE REPAIRED OR REPLACED TO THE SATISFACTION OF THE ENGINEER IN ACCORDANCE WITH ARTICLES 105.07 AND 107.20.
4. ALL UTILITY COMPANIES SHALL BE NOTIFIED AT LEAST 3 DAYS PRIOR TO THE START OF CONSTRUCTION.
5. THE CONTRACTOR SHALL USE NECESSARY PRECAUTIONS AND PROTECTION MEASURES REQUIRED TO MAINTAIN EXISTING UTILITIES, SEWERS, AND APPURTENANCES THAT MUST BE KEPT IN OPERATION.
6. THE CONTRACTOR SHALL ENSURE THAT ALL WATER SYSTEM VALVES, VALVE VAULTS, FIRE HYDRANTS AND SANITARY SEWER MANHOLES REMAIN READILY ACCESSIBLE FOR EMERGENCY OPERATIONS. THE LOCATIONS OF ALL WATER AND SANITARY FACILITIES SHALL BE MARKED AND READILY VISIBLE AT ALL TIMES.
7. ALL LOOSE MATERIAL FROM CONSTRUCTION ACTIVITIES DEPOSITED IN THE FLOWLINE OF DRAINAGE STRUCTURES, WHICH OBSTRUCTS THE NATURAL FLOW OF WATER SHALL BE REMOVED AT THE CLOSE OF EACH WORKING DAY. PRIOR TO ACCEPTANCE OF THE IMPROVEMENT, ALL DRAINAGE STRUCTURES SHALL BE FREE OF DIRT AND DEBRIS. THIS WORK WILL NOT BE PAID FOR SEPARATELY, BUT SHALL BE INCLUDED IN THE UNIT BID PRICE OF THE STABILIZED CONSTRUCTION ENTRANCE.
8. THE NSMJAWA 20" PCCP HIGH PRESSURE WATER MAIN ALONG THE WEST SIDE OF COUNTY FARM ROAD SHALL BE PROTECTED DURING CONSTRUCTION. THE CONTRACTOR SHALL PERFORM AN EXPLORATION TRENCH UNDER NSMJAWA OBSERVATION TO DETERMINE THE DEPTH OF THE WATER MAIN AT THE CONSTRUCTION ACCESS LOCATION AND THEN GENERATE AND SUBMIT AN APPROPRIATE CROSSING DESIGN TO THE ENGINEER AND NSMJAWA FOR APPROVAL BEFORE ANY EQUIPMENT WILL BE ALLOWED TO CROSS THE WATER MAIN. THIS WORK SHALL BE PAID FOR AS TEMPORARY ACCESS ROAD (SPECIAL) AND SHALL FOLLOW THE TEMPORARY ACCESS ROAD (SPECIAL) SPECIAL PROVISION IN THE CONTRACT DOCUMENTS.

INDEX OF SHEETS

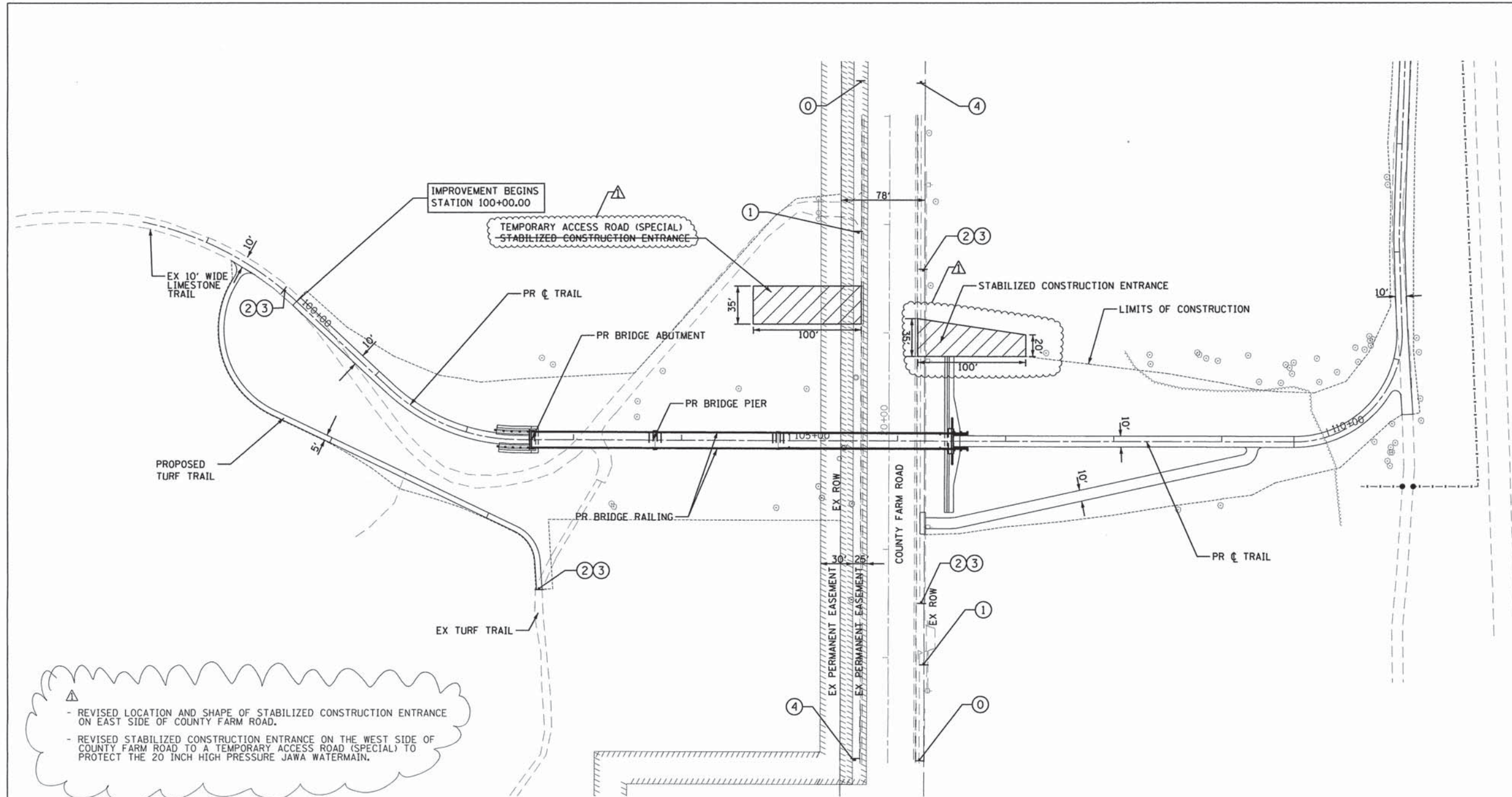
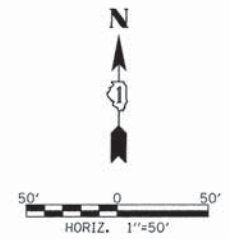
1	TITLE SHEET
2	INDEX OF SHEETS, GENERAL NOTES AND STATE STANDARDS
3	SUMMARY OF QUANTITIES
4	TYPICAL SECTIONS
5-6	ALIGNMENT, TIES AND BENCHMARKS
7-9	REMOVAL PLANS
10	CONSTRUCTION STAGING PLAN AND NOTES
11-13	TRAIL AND UTILITY PLANS
14	COMPENSATORY STORAGE FACILITY
15-16	TRAIL PROFILES
17-20	EROSION AND SEDIMENT CONTROL PLANS
21-23	TRAIL SIGNING AND LANDSCAPING PLANS
24	COMPENSATORY STORAGE PLANTING PLAN
25	PROJECT DETAILS
26-43	STRUCTURAL PLANS
44-69	CROSS SECTIONS

STATE STANDARDS

STD. NO.	DESCRIPTION
000001-06	STANDARD SYMBOLS, ABBREVIATIONS AND PATTERNS
280001-07	TEMPORARY EROSION CONTROL SYSTEMS
515001-03	NAME PLATE FOR BRIDGES
542301-03	PRECAST REINFORCED CONCRETE FLARED END SECTION
601101-01	CONCRETE HEADWALL FOR PIPE DRAIN
606001-06	CONCRETE CURB TYPE B AND COMBINATION CONCRETE CURB AND GUTTER
701101-04	OFF-RD OPERATIONS, MULTILANE 15" (4.5 m) TO 24" (600 MM) FROM PAVEMENT EDGE
701427-03	LANE CLOSURE, MULTILANE INTERMITTENT OR MOVING OPER., FOR SPEEDS <= 40 MPH
701606-10	URBAN SINGLE LANE CLOSURE, MULTILANE, 2W WITH MOUNTABLE MEDIAN
701901-04	TRAFFIC CONTROL DEVICES
720001-01	SIGN PANEL MOUNTING DETAILS
720006-04	SIGN PANEL ERECTION DETAILS
720011-01	METAL POSTS FOR SIGNS, MARKERS & DELINEATORS
729001-01	APPLICATIONS OF TYPES A & B METAL POSTS (FOR SIGNS & MARKERS)

- ADDED TEMPORARY ACCESS ROAD (SPECIAL) DETAILS, NOTES, SPECIAL PROVISION, AND PAY ITEM TO PROTECT THE 20 INCH HIGH PRESSURE JAWA WATERMAIN.
 - ADDED GENERAL NOTE STATING THAT THE CONTRACTOR SHALL NOT USE THE GREENBROOK ELEMENTARY SCHOOL PROPERTY TO ACCESS THE EAST SIDE OF KEENEYVILLE DITCH AND SHALL USE AN APPROVED METHOD TO CROSS THE DITCH.

FILE NAME *	USER NAME = CEComin	DESIGNED - MLB	REVISED - 02/16/2016	STATE OF ILLINOIS DEPARTMENT OF TRANSPORTATION	COUNTY FARM ROAD BRIDGE AND TRAIL IMPROVEMENTS INDEX OF SHEETS, GENERAL NOTES AND STATE STANDARDS	F.A.U. RTE.	SECTION	COUNTY	TOTAL SHEETS	SHEET NO.	
G:\CH13\0855\Road\Sheet\30855-SHT-NOTE	S.dgn	DRAWN - MLB	REVISED -			362	14-F3000-12-BT	DuPAGE	69	2	
PLOT SCALE *	PLOT DATE = 2/17/2016	CHECKED - DWB	REVISED -			CONTRACT NO 61C31					
DATE - 12/7/2015	REVISED -	SCALE: NTS SHEET NO. 1 OF 1 SHEETS STA. TO STA.				FED. ROAD DIST. NO. ILLINOIS FED. AID PROJECT					



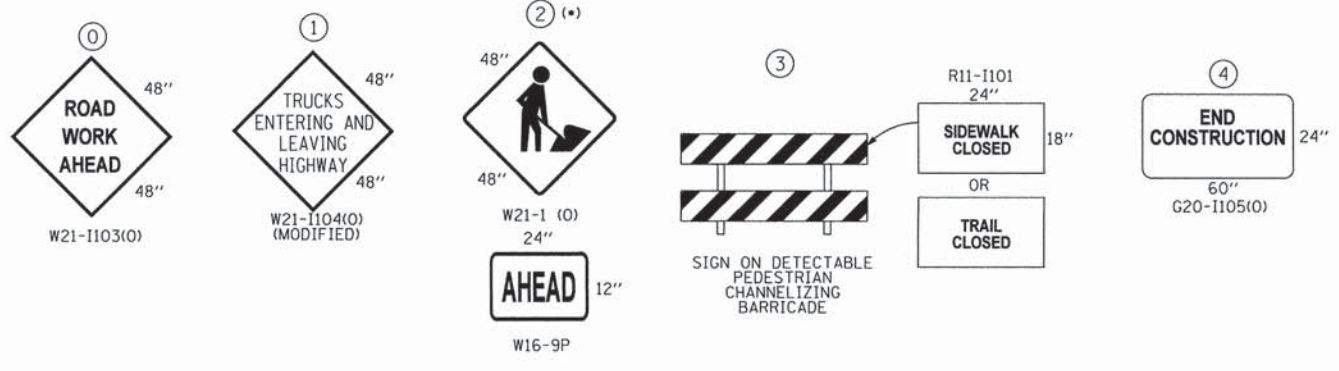
- REVISED LOCATION AND SHAPE OF STABILIZED CONSTRUCTION ENTRANCE ON EAST SIDE OF COUNTY FARM ROAD.
 - REVISED STABILIZED CONSTRUCTION ENTRANCE ON THE WEST SIDE OF COUNTY FARM ROAD TO A TEMPORARY ACCESS ROAD (SPECIAL) TO PROTECT THE 20 INCH HIGH PRESSURE JAWA WATERMAIN.

CONSTRUCTION STAGING:

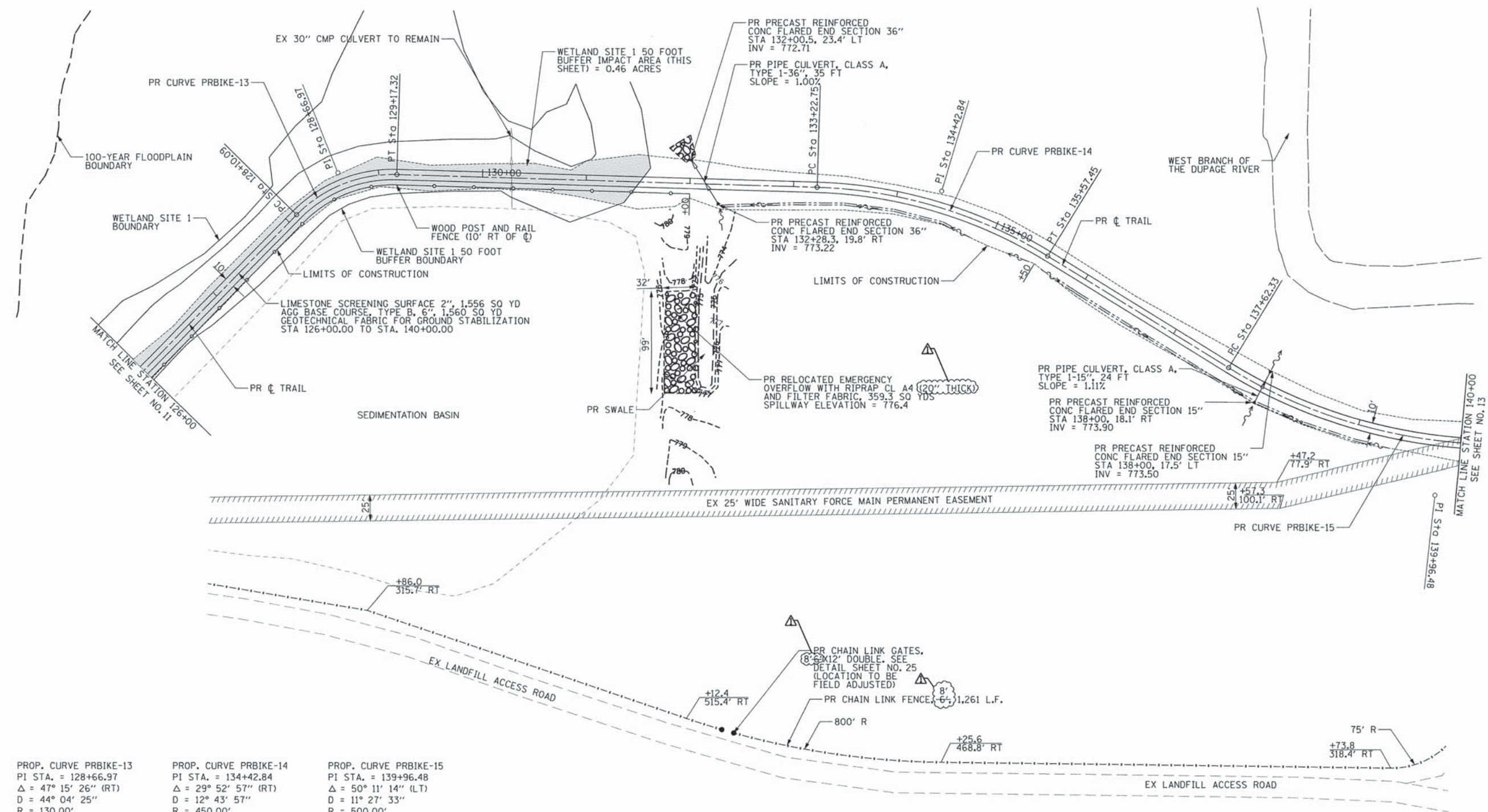
1. CONSTRUCT PROPOSED TURF TRAIL TO CONNECT EXISTING LIMESTONE TRAIL TO EXISTING TURF TRAIL PRIOR TO REMOVING EXISTING LIMESTONE TRAIL EAST OF STATION 100+00.
2. CONSTRUCT OVERPASS APPROACHES ON WEST AND EAST SIDE OF COUNTY FARM RD.
3. INSTALL PREFABRICATED BRIDGE SECTIONS. THESE SHALL BE INSTALLED AT NIGHT BETWEEN THE HOURS OF 9 PM AND 5 AM. OPEN NEW OVERPASS.
4. LANDSCAPE RESTORATION WORK.

NOTES:
 ALL TEMPORARY SIGNING SHALL BE PAY FOR AS TRAFFIC CONTROL AND PROTECTION, (SPECIAL)

(*) SIGN NEEDS TO BE REMOVED WHEN WORKERS NOT PRESENT FOR MORE THAN ONE HOUR.



FILE NAME = G:\CH13\0855\Road\Sheets\30855-SHT-MOT1.dgn	USER NAME = CEComin	DESIGNED - MLB	REVISED - 02/16/2016	STATE OF ILLINOIS DEPARTMENT OF TRANSPORTATION	COUNTY FARM ROAD BRIDGE AND TRAIL IMPROVEMENTS CONSTRUCTION STAGING PLAN AND NOTES	F.A.U. RTE. 362	SECTION 14-F3000-12-BT	COUNTY DuPAGE	TOTAL SHEETS 69	SHEET NO. 10	
PLOT SCALE =	CHECKED - DWB	REVISED -	SCALE: 1"=50'			SHEET NO. 1 OF 1 SHEETS	STA. 100+00 TO STA. 126+00	FED. ROAD DIST. NO. ILLINOIS FED. AID PROJECT		CONTRACT NO 61C31	
PLOT DATE = 2/17/2016	DATE - 12/7/2015	REVISED -									



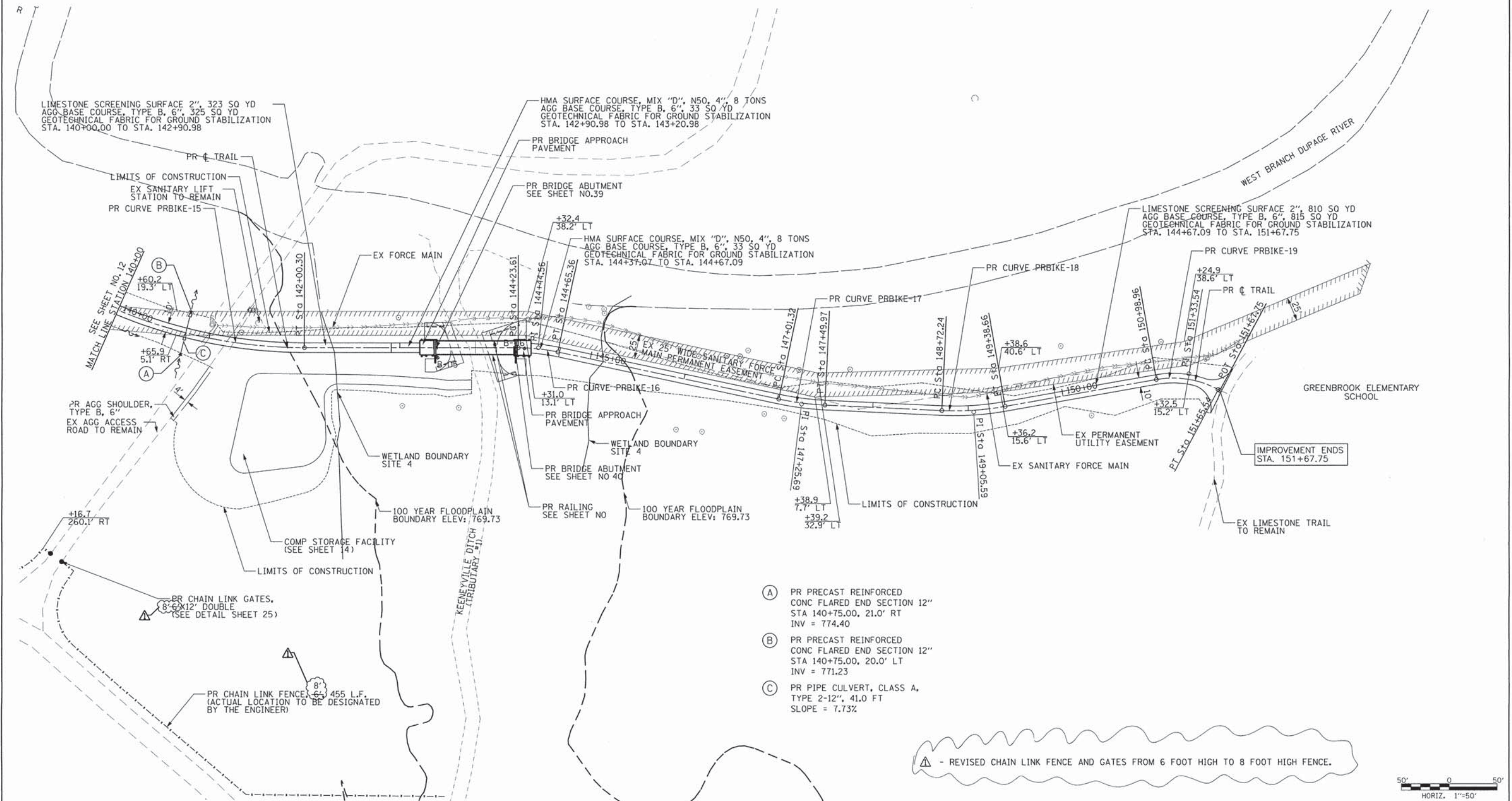
PROP. CURVE PRBIKE-13	PROP. CURVE PRBIKE-14	PROP. CURVE PRBIKE-15
PI STA. = 128+66.97	PI STA. = 134+42.84	PI STA. = 139+96.48
$\Delta = 47^\circ 15' 26''$ (RT)	$\Delta = 29^\circ 52' 57''$ (RT)	$\Delta = 50^\circ 11' 14''$ (LT)
D = 44' 04" 25"	D = 12' 43" 57"	D = 11' 27" 33"
R = 130.00'	R = 450.00'	R = 500.00'
T = 56.87'	T = 120.08'	T = 234.15'
L = 107.22'	L = 234.70'	L = 437.97'
E = 11.90'	E = 15.75'	E = 52.11'
$e = \text{-----}$	$e = \text{-----}$	$e = \text{-----}$
T.R. = -----	T.R. = -----	T.R. = -----
S.E. RUN = -----	S.E. RUN = -----	S.E. RUN = -----
P.C. STA. = 128+10.09	P.C. STA. = 133+22.75	P.C. STA. = 137+62.33
P.T. STA. = 129+17.32	P.T. STA. = 135+57.45	P.T. STA. = 142+00.30

▲ - REVISED CHAIN LINK FENCE AND GATES FROM 6 FOOT HIGH TO 8 FOOT HIGH FENCE.
 - ADDED RIPRAP DEPTH OF 20 INCHES FOR CLASS A4 RIPRAP AT RELOCATED EMERGENCY OVERFLOW.



FILE NAME = G:\CH13\08955\Road\Sheets\38895-SHT-PLAN\02.dgn	USER NAME = CECOMIN	DESIGNED - MLB	REVISED - ▲ 02/16/2016	STATE OF ILLINOIS DEPARTMENT OF TRANSPORTATION	COUNTY FARM ROAD BRIDGE AND TRAIL IMPROVEMENTS TRAIL AND UTILITY PLAN	F.A.U. RTE. = 362	SECTION = 14-F3000-12-BT	COUNTY = DuPAGE	TOTAL SHEETS = 69	SHEET NO. = 12		
PLOT SCALE =						SCALE: 1"=50'	SHEET NO. 2 OF 3 SHEETS	STA. 126+00 TO STA. 140+00	FED. ROAD DIST. NO. = ILLINOIS FED. AID PROJECT	CONTRACT NO 61C31		
PLOT DATE = 2/17/2016						DATE = 12/7/2015						

PROP. CURVE PRBIKE-15 PI STA. = 139+96.48 Δ = 50° 11' 14" (LT) D = 11° 27' 33" R = 500.00' T = 234.15' L = 437.97' E = 52.11' e = ---- T.R. = ---- S.E. RUN = ---- P.C. STA. = 137+62.33 P.T. STA. = 142+00.30	PROP. CURVE PRBIKE-16 PI STA. = 144+44.56 Δ = 11° 57' 36" (RT) D = 28° 38' 52" R = 200.00' T = 20.95' L = 41.75' E = 1.09' e = ---- T.R. = ---- S.E. RUN = ---- P.C. STA. = 144+23.61 P.T. STA. = 144+65.36	PROP. CURVE PRBIKE-17 PI STA. = 147+25.69 Δ = 9° 17' 29" (LT) D = 19° 05' 55" R = 300.00' T = 24.38' L = 48.65' E = 0.99' e = ---- T.R. = ---- S.E. RUN = ---- P.C. STA. = 147+01.32 P.T. STA. = 147+49.97	PROP. CURVE PRBIKE-18 PI STA. = 149+05.59 Δ = 12° 41' 05" (LT) D = 19° 05' 55" R = 300.00' T = 33.34' L = 66.42' E = 1.85' e = ---- T.R. = ---- S.E. RUN = ---- P.C. STA. = 148+72.24 P.T. STA. = 149+38.66	PROP. CURVE PRBIKE-19 PI STA. = 151+33.54 Δ = 38° 08' 41" (RT) D = 57° 17' 45" R = 100.00' T = 34.57' L = 66.57' E = 5.81' e = ---- T.R. = ---- S.E. RUN = ---- P.C. STA. = 150+98.96 P.T. STA. = 151+65.54
--	---	--	---	---

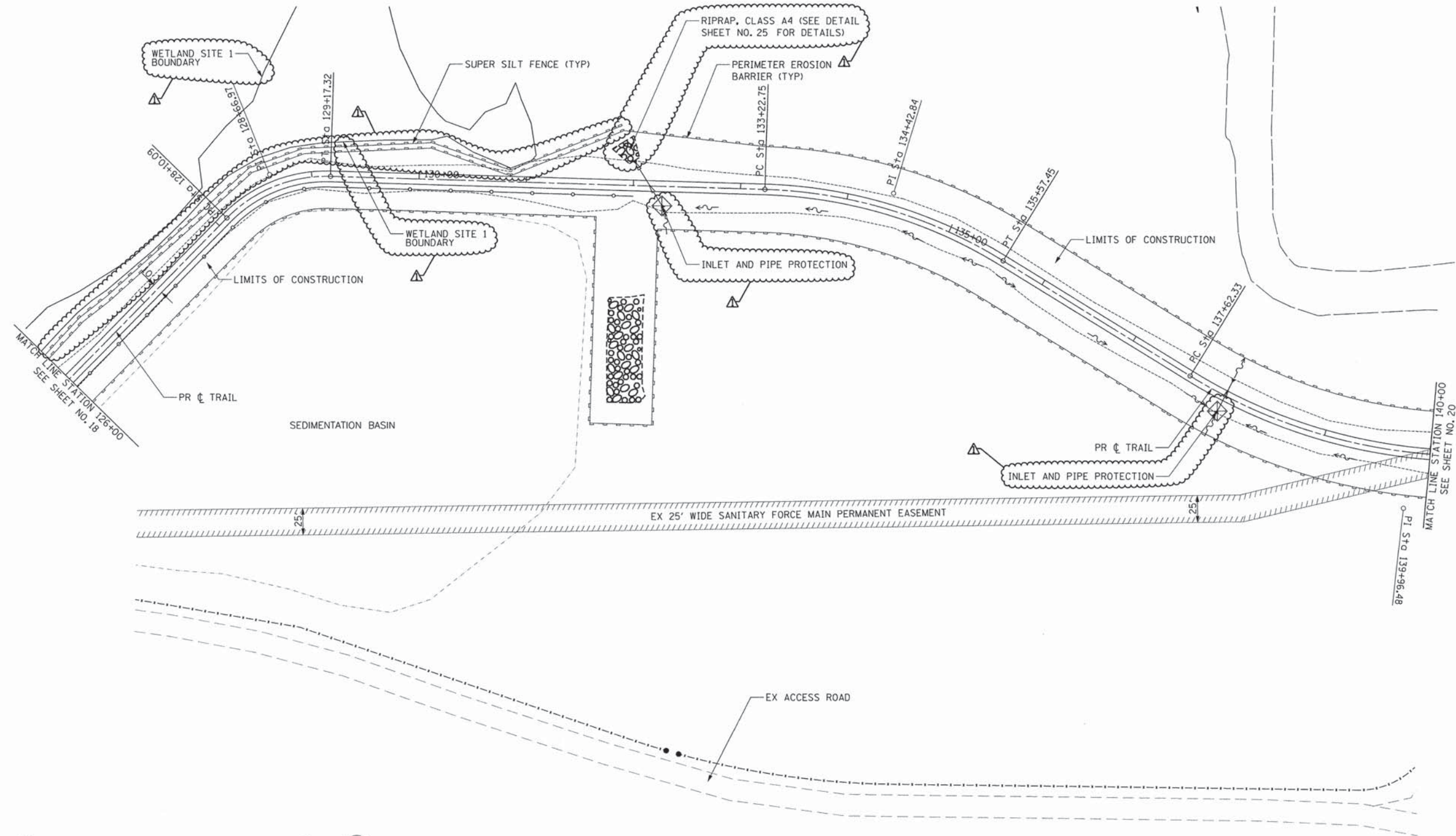


- (A) PR PRECAST REINFORCED CONC FLARED END SECTION 12" STA 140+75.00, 21.0' RT INV = 774.40
- (B) PR PRECAST REINFORCED CONC FLARED END SECTION 12" STA 140+75.00, 20.0' LT INV = 771.23
- (C) PR PIPE CULVERT, CLASS A, TYPE 2-12", 41.0 FT SLOPE = 7.73%

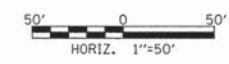
▲ - REVISED CHAIN LINK FENCE AND GATES FROM 6 FOOT HIGH TO 8 FOOT HIGH FENCE.



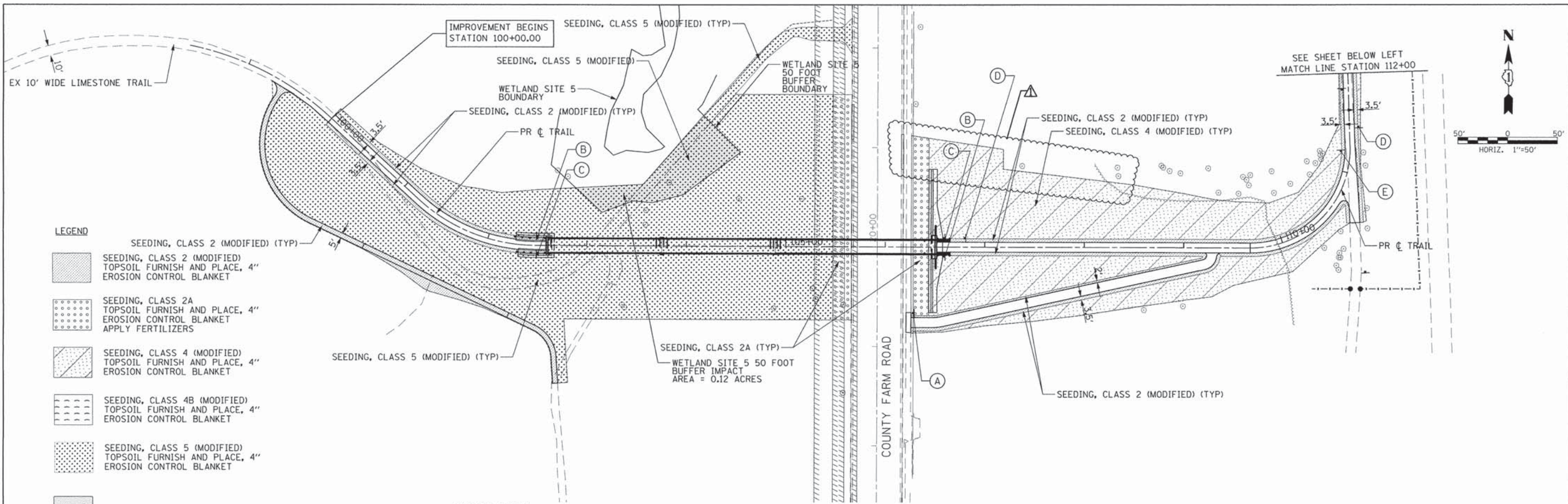
FILE NAME = G:\NCH\3\0855\Road\Sheets\30855-SHT-PLAN\03.dgn	USER NAME = CECamin	DESIGNED - MLB	REVISED -	STATE OF ILLINOIS DEPARTMENT OF TRANSPORTATION	COUNTY FARM ROAD BRIDGE AND TRAIL IMPROVEMENTS TRAIL AND UTILITY PLAN	F.A.U. RTE. = 362	SECTION = 14-F3000-12-BT	COUNTY = DUPAGE	TOTAL SHEETS = 69	SHEET NO. = 13			
PLOT SCALE =	CHECKED - DWB	REVISED -	SCALE: 1"=50'			SHEET NO. 3 OF 3 SHEETS	STA. 140+00 TO STA. 151+67.49	FED. ROAD DIST. NO. =	ILLINOIS FED. AID PROJECT	CONTRACT NO 61C31			
PLOT DATE = 2/17/2016	DATE = 12/7/2015	REVISED -											



- △ - ADDED INLET AND PIPE PROTECTION TO UPSTREAM ENDS FOR PROPOSED CULVERTS.
- ADDED RIPRAP CLASS A4 AT OUTLET END FOR PROPOSED CULVERT AT STATION 132+15.42.
- DISPLAYED WETLAND SITE 1 BOUNDARY.
- REVISED LOCATION OF SUPER SILT FENCE AT WETLAND SITE 1 SO THAT IT IS ADJACENT TO THE WETLAND AND NOT INSIDE OF IT.



FILE NAME = G:\CH13\0055\Road\Sheets\30055-SHT-EROSION.dgn	USER NAME = CECamm	DESIGNED - MLB	REVISED - △ 02/16/2016	STATE OF ILLINOIS DEPARTMENT OF TRANSPORTATION	COUNTY FARM ROAD BRIDGE AND TRAIL IMPROVEMENTS EROSION AND SEDIMENT CONTROL PLAN	F.A.U. RTE. 362	SECTION 14-F3000-12-BT	COUNTY DuPAGE	TOTAL SHEETS 69	SHEET NO. 19			
PLOT SCALE =	CHECKED - DWB	REVISED -	SCALE: 1"=50'			SHEET NO. 2 OF 3 SHEETS	STA. 126+00 TO STA. 140+00	FED. ROAD DIST. NO. ILLINOIS	FED. AID PROJECT	CONTRACT NO 61C31			
PLOT DATE = 2/17/2016	DATE - 12/7/2015	REVISED -											



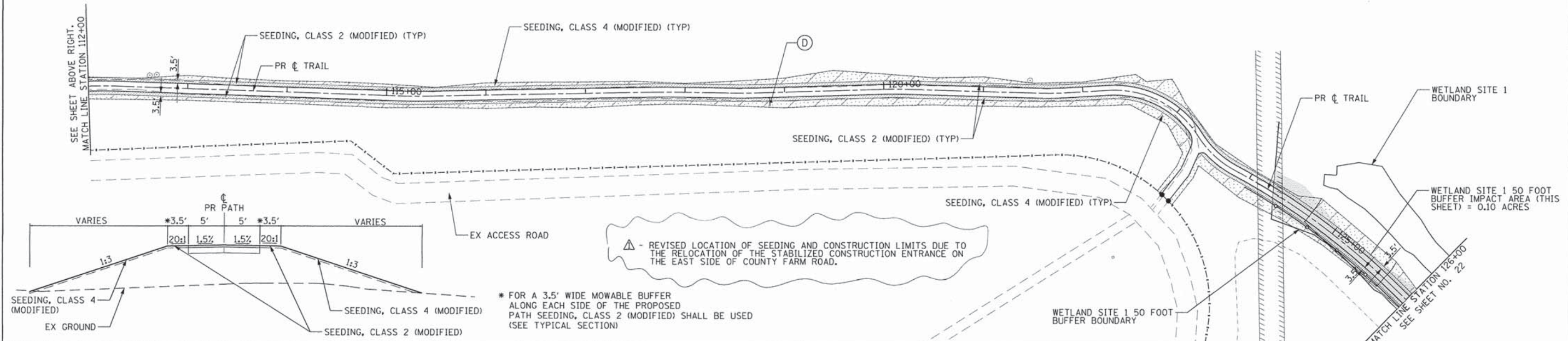
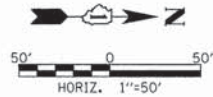
LEGEND

- SEEDING, CLASS 2 (MODIFIED) (TYP)
TOPSOIL FURNISH AND PLACE, 4"
EROSION CONTROL BLANKET
- SEEDING, CLASS 2A
TOPSOIL FURNISH AND PLACE, 4"
EROSION CONTROL BLANKET
APPLY FERTILIZERS
- SEEDING, CLASS 4 (MODIFIED)
TOPSOIL FURNISH AND PLACE, 4"
EROSION CONTROL BLANKET
- SEEDING, CLASS 4B (MODIFIED)
TOPSOIL FURNISH AND PLACE, 4"
EROSION CONTROL BLANKET
- SEEDING, CLASS 5 (MODIFIED)
TOPSOIL FURNISH AND PLACE, 4"
EROSION CONTROL BLANKET
- WETLAND BUFFER IMPACT AREA

SIGNING LEGEND

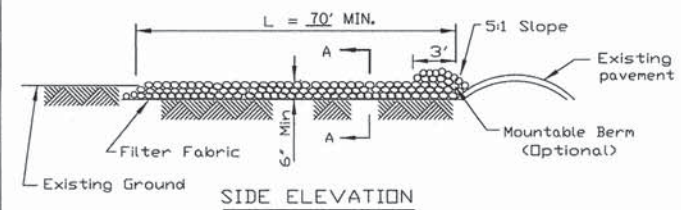
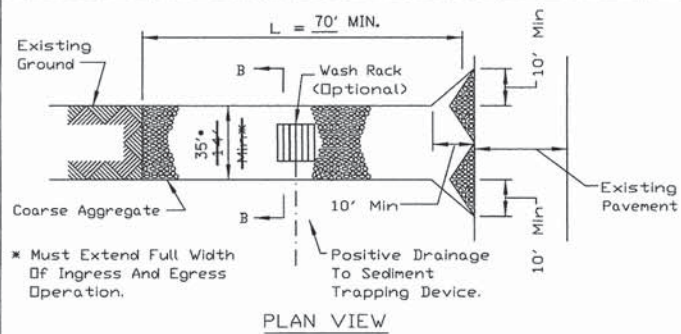
- (A) R1-1
18" X 18"
- (B) OM3-L
6" X 18"
- (C) OM3-R
6" X 18"
- (D) W7-5
18" X 18"
- (E) W1-2
18" X 18"
- (F) R1-2
18" X 18" X 18"

NOTE: USE HEAVY DUTY EROSION CONTROL BLANKET FOR SLOPES STEEPER THAN 1:3.



FILE NAME = G:\CH13\0055\Road\Sheets\30805-SHT-L55.dgn	USER NAME = CEC.com	DESIGNED - MLB	REVISED - 02/16/2016	STATE OF ILLINOIS DEPARTMENT OF TRANSPORTATION	COUNTY FARM ROAD BRIDGE AND TRAIL IMPROVEMENTS TRAIL SIGNING & LANDSCAPING PLAN	F.A.U. RTE. = 362	SECTION = 14-F3000-12-BT	COUNTY = DuPAGE	TOTAL SHEETS = 69	SHEET NO. = 21
PLOT SCALE =	CHECKED - DWB	REVISED -	SCALE: 1"=50'			SHEET NO. 1 OF 3 SHEETS	STA. 100+00 TO STA. 126+00	CONTRACT NO 61C31		
PLOT DATE = 2/17/2016	DATE - 12/7/2015	REVISED -						FED. ROAD DIST. NO. ILLINOIS FED. AID PROJECT		

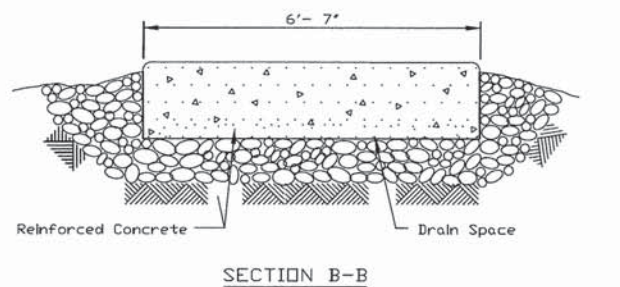
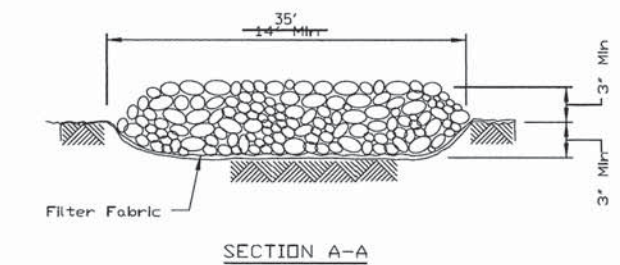
STABILIZED CONSTRUCTION ENTRANCE PLAN



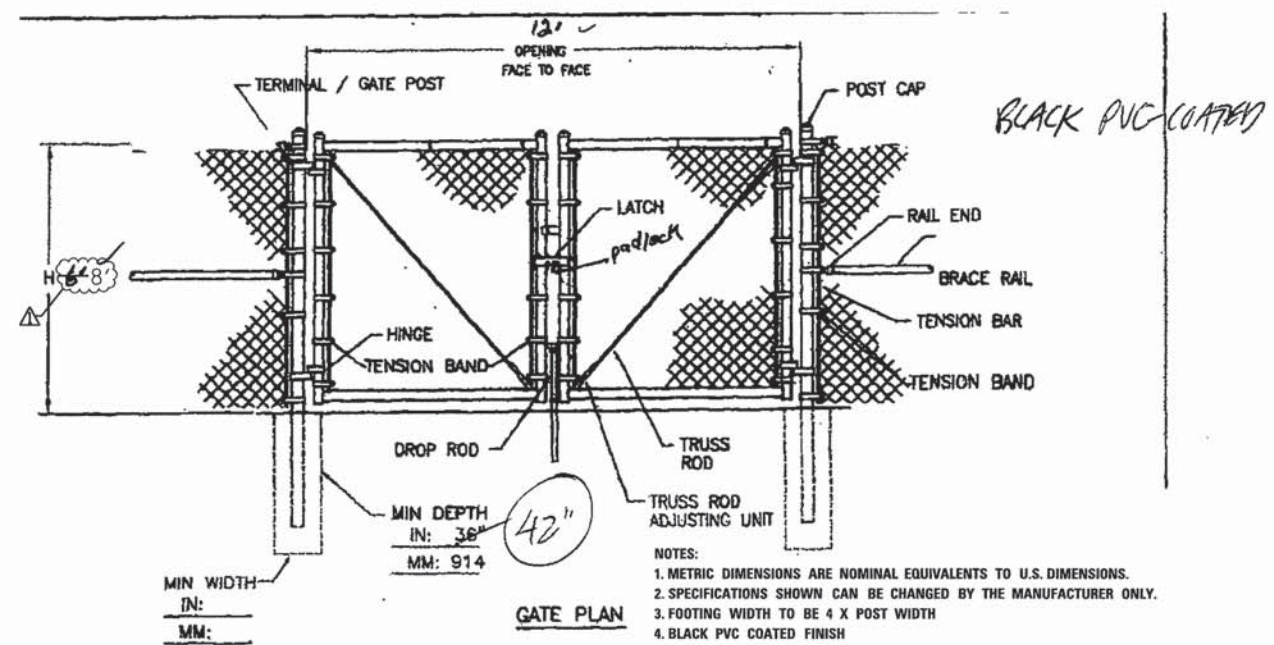
- NOTES:
1. Filter fabric shall meet the requirements of material specification 592 GEDTEXTILE, Table I or 2, Class I, II or IV and shall be placed over the cleared area prior to the placing of rock.
 2. Rock or reclaimed concrete shall meet one of the following IDOT coarse aggregate gradation, CA-1, CA-2, CA-3 or CA-4 and be placed according to construction specification 25 ROCKFILL using placement Method 1 and Class III compaction.
 3. Any drainage facilities required because of washing shall be constructed according to manufacturers specifications.
 4. If wash racks are used they shall be installed according to the manufacturer's specifications.

REFERENCE	PROJECT	DESIGNED	DATE		STANDARD DWG. NO.
Project	Designed	Checked	Approved		IL-630
Designed	Checked	Approved			SHEET 1 OF 2
Checked	Approved				DATE 8-18-94

STABILIZED CONSTRUCTION ENTRANCE PLAN

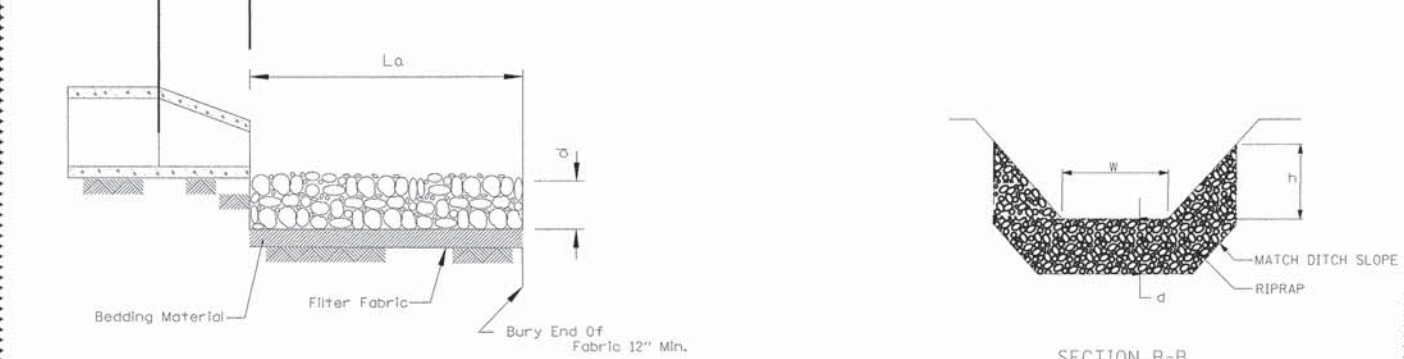
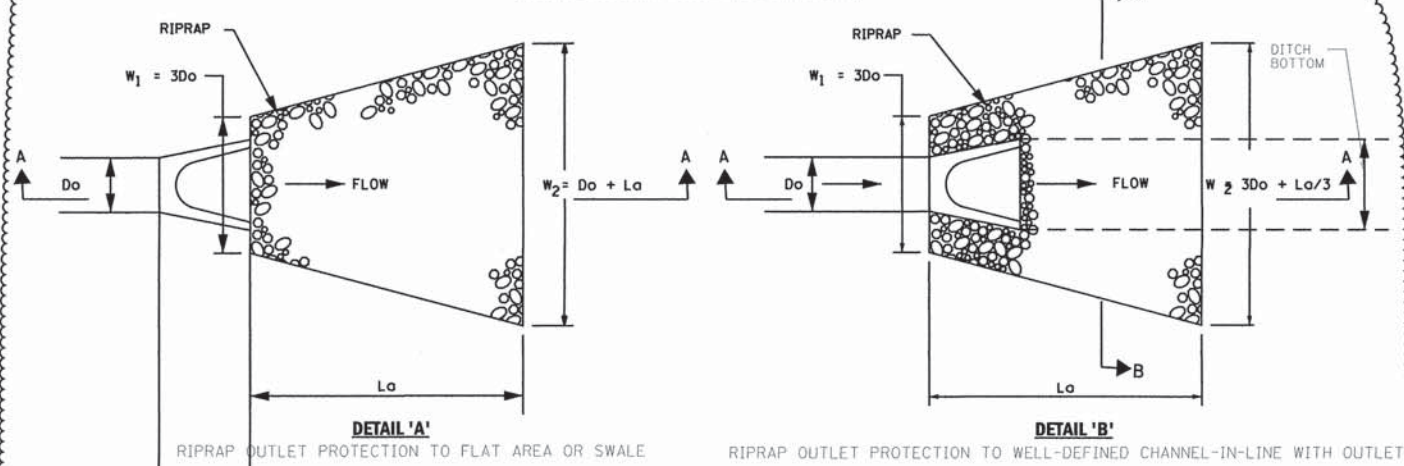


REFERENCE	PROJECT	DESIGNED	DATE		STANDARD DWG. NO.
Project	Designed	Checked	Approved		IL-630
Designed	Checked	Approved			SHEET 2 OF 2
Checked	Approved				DATE 8-18-94



- NOTES:
1. METRIC DIMENSIONS ARE NOMINAL EQUIVALENTS TO U.S. DIMENSIONS.
 2. SPECIFICATIONS SHOWN CAN BE CHANGED BY THE MANUFACTURER ONLY.
 3. FOOTING WIDTH TO BE 4 X POST WIDTH
 4. BLACK PVC COATED FINISH

ROCK OUTLET PROTECTION



LOCATION	RIPRAP GRADATION	La (FT.)	RIPRAP (d) THICKNESS (IN)	BEDDING THICKNESS (INCH)	AREA (SQ YD)	DETAIL USED
STA 132+00, 23.3' LT	4	20	20	6	38.5	A

NOTES
PAID PER 50 YD FOR RIPRAP, CLASS A4 AND PER 50 YD FOR FILTER FABRIC

▲ - REVISED CHAIN LINK FENCE GATE DETAIL FROM 6 FOOT HIGH TO 8 FOOT HIGH FENCE.
- ADDED A DETAIL FOR ROCK OUTLET PROTECTION.

STATE OF ILLINOIS
DEPARTMENT OF TRANSPORTATION

COUNTY FARM ROAD BRIDGE AND TRAIL IMPROVEMENTS
PROJECT DETAILS

F.A.U. RTE.	SECTION	COUNTY	TOTAL SHEETS	SHEET NO.
362	14-F3000-12-BT	DuPAGE	69	25
CONTRACT NO 61C31				
FED. ROAD DIST. NO. ILLINOIS FED. AID PROJECT				

FILE NAME *	USER NAME = CECamr	DESIGNED - MLB	REVISED - ▲ 02/16/2016
G:\CH\3\0855\Road\Sheets\30855-SHT-ST04	CONST ENTR DETAIL.S.dgn	DRAWN - MLB	REVISED -
PLOT SCALE *		CHECKED - DWB	REVISED -
PLOT DATE = 2/17/2016		DATE - 12/7/2015	REVISED -

SCALE: SHEET NO. 1 OF 1 SHEETS STA. TO STA.