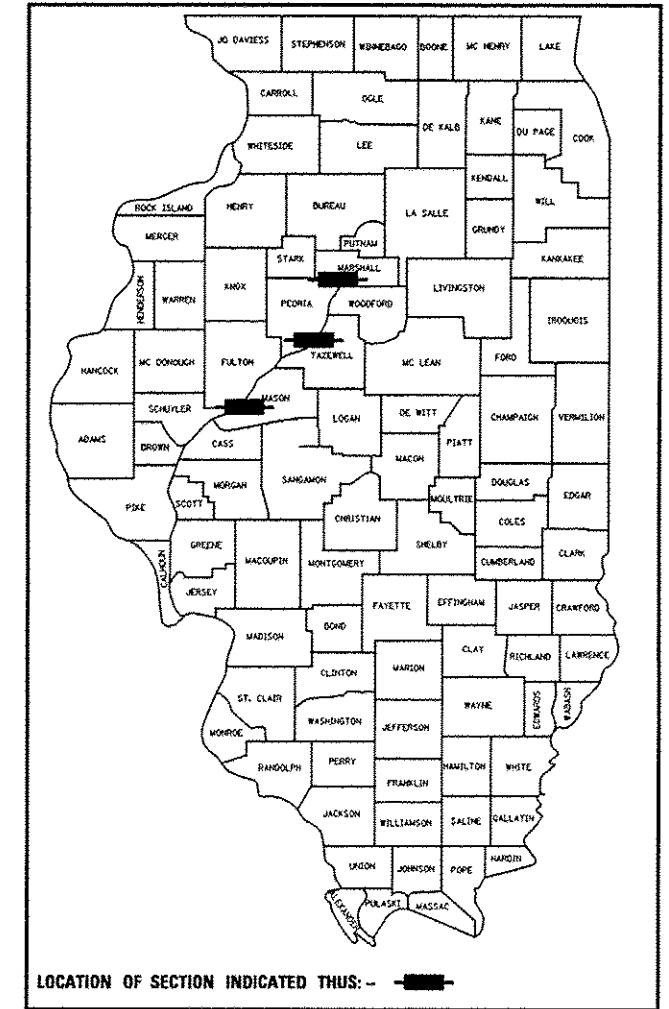


F.A. RTE.	SECTION	COUNTY	TOTAL SHEETS	SHEET NO.
VAR	D4 BRIDGE WASHING 2016	ILLINOIS	14	1
			CONTRACT NO. 68C81	
* TAZEWELL, MARSHALL & MASON				

* 14-1 = 13 TOTAL SHEETS
D-94-063-15



STATE OF ILLINOIS
DEPARTMENT OF TRANSPORTATION
DIVISION OF HIGHWAYS
PROPOSED
HIGHWAY PLANS

ROUTES VARIOUS
SECTION D4 BRIDGE WASHING 2016
PROJECT N/A
TYPE of IMPROVEMENT BRIDGE WASHING
TAZEWELL, MARSHALL & MASON COUNTIES

C-94-103-15

- INDEX OF SHEETS**
- 1 COVER SHEET
 - 2 ADDITIONAL MAP LOCATIONS
 - 3-4 SUMMARY OF QUANTITIES
 - 5 GENERAL NOTES
 - * 6-14 PLAN SHEETS
- * SHEET 10 DELETED.

STANDARDS

701001-02	701401-09
701006-05	701406-09
701011-04	701411-09
701101-04	701421-07
701106-02	701428
701201-04	701602-07
701206-03	701606-10
701400-08	701901-04

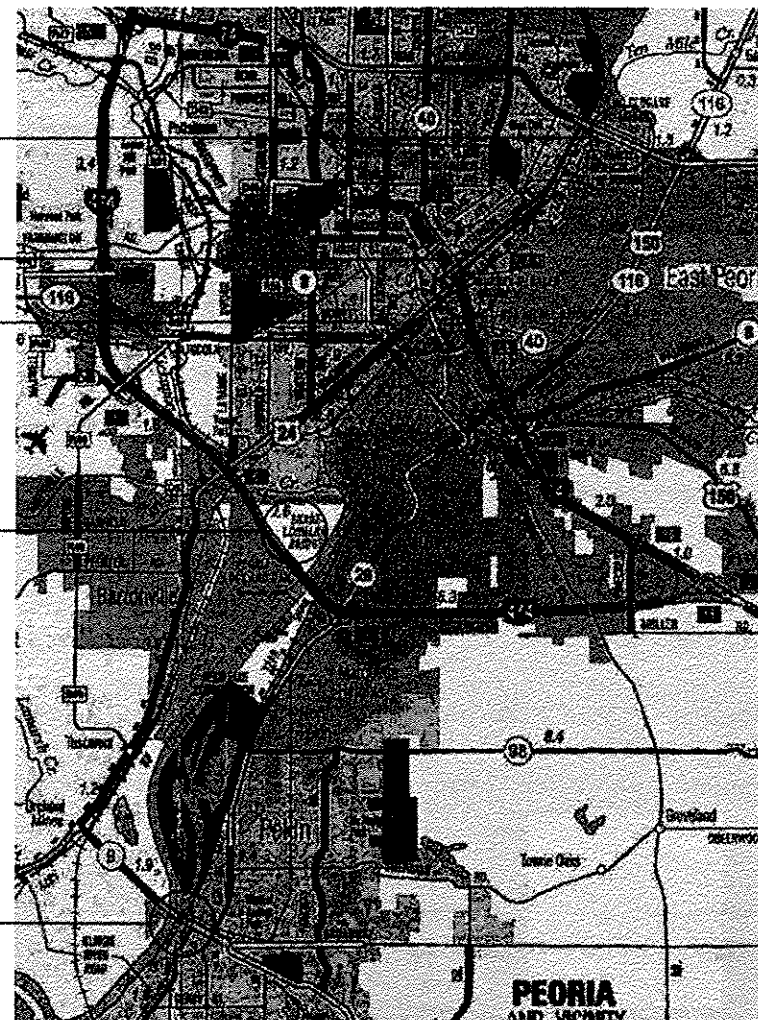
ADT

- Location 1 - 41,400
- Location 2 - 41,400
- Location 3 - 63,600
- Location 4 - 19,600
- ~~Location 5 - 28,700~~
- ~~Location 6 - 28,700~~
- Location 7 - 14,100
- Location 8 - 2,250
- Location 9 - 6,500
- Location 10 - 5,250

J.U.L.I.E.
JOINT UTILITY LOCATION INFORMATION FOR EXCAVATION
1-800-892-0123
OR 811

PROJECT ENGINEER MIKE LEWIS (309)-671-3454
PROJECT MANAGER TOM INGLIS (309) 671-3450
CONTRACT NO. 68C81
CATALOG NO. 035317-00D

- Location 1 & 2
S.N. 090-0070 /0115
- Location 3 S.N. 090-0001
- Location 4 S.N. 090-0122
- ~~Location 5 & 6~~
~~S.N. 090-0108 /0109~~
- Location 7 S.N. 090-0114



STATE OF ILLINOIS
DEPARTMENT OF TRANSPORTATION
DIVISION OF HIGHWAYS

SUBMITTED October 22 2015
Randa James
DEPUTY DIRECTOR OF HIGHWAYS, REGION ENGINEER

Dec 4 2015
Don D. Baranzelli, PE
ENGINEER OF DESIGN AND ENVIRONMENT

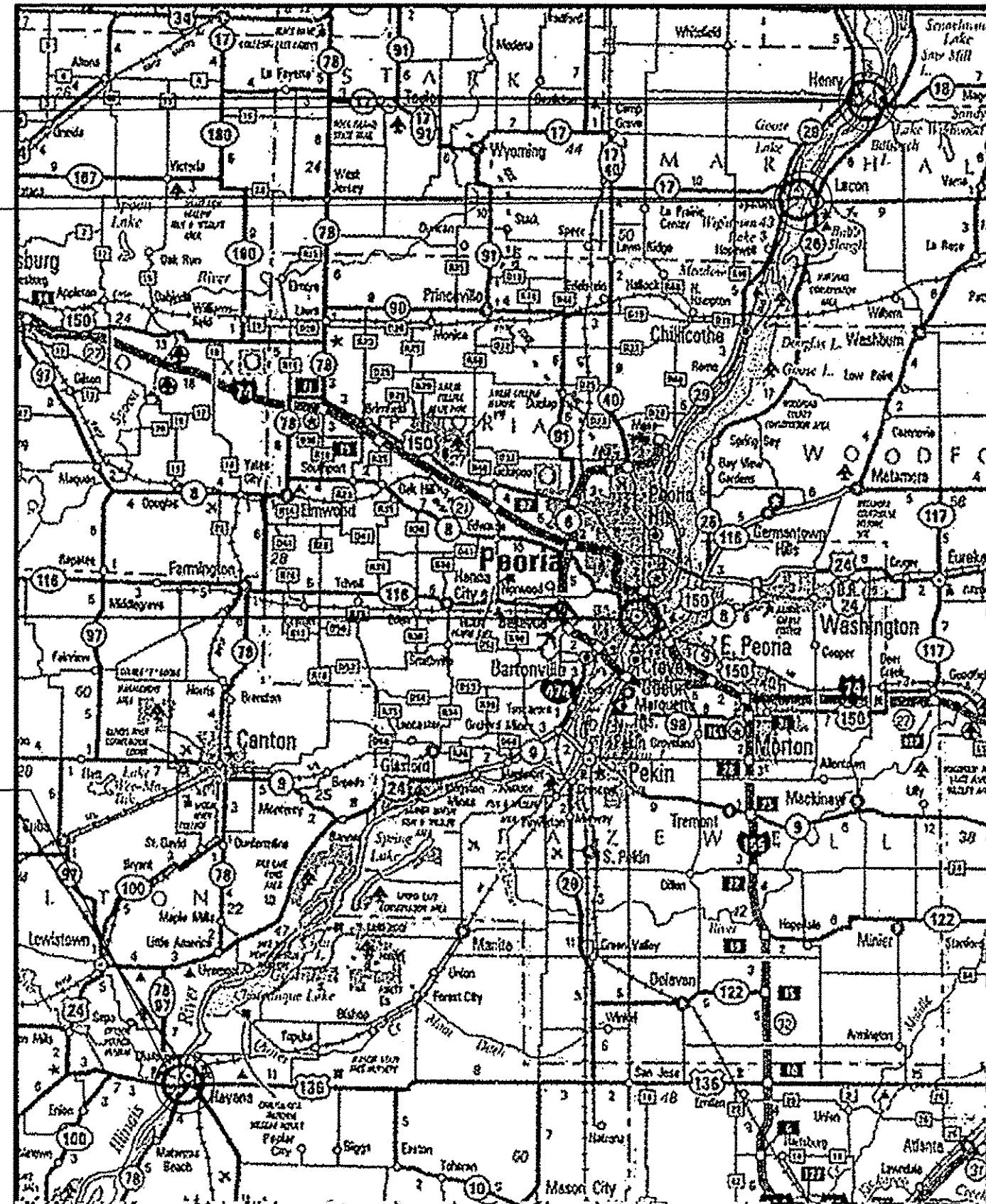
Dec 4 2015
Ames Osman, PE
DIRECTOR OF HIGHWAYS, CHIEF ENGINEER

PRINTED BY THE AUTHORITY
OF THE STATE OF ILLINOIS

Location 8 S.N. 062-0036

Location 9 S.N. 062-0003

Location 10 S.N. 063-0002



STATE OF ILLINOIS
DEPARTMENT OF TRANSPORTATION

Location Map Structures 8 - 10

TAEZEWELL, MARSHALL & MASON

FILE NAME *	USER NAME = aubrnyga
C:\Users\aubrnyga\Desktop\0458C81-FY 16	Bridge Washing.dgn
	PLOT SCALE = 100.0000 / 1" =
Default	PLOT DATE = 10/22/2015

DESIGNED -	REVISED -
DRAWN -	REVISED -
CHECKED -	REVISED -
DATE -	REVISED -

SCALE: SHEET OF SHEETS STA. TO STA.

F.A. RTE.	SECTION	COUNTY	TOTAL SHEETS	SHEET NO.
VAR D-4 BRIDGE WASHING 2016			14	2
CONTRACT NO. 68C81				
ILLINOIS FED. AID PROJECT				

CODE NO.	ITEM	UNIT	TOTAL QUANTITY	CONSTRUCTION CODE		
				URBAN	URBAN	URBAN
				100% STATE	100% STATE	100% STATE
				VARIOUS	VARIOUS	VARIOUS
TAZEWELL	MARSHALL	MASON				
0014	0014	0014				
59200101	BRIDGE WASHING NO. 1	EACH	1	1		
59200102	BRIDGE WASHING NO. 2	EACH	1	1		
59200103	BRIDGE WASHING NO. 3	EACH	1	1		
59200104	BRIDGE WASHING NO. 4	EACH	1	1		
59200105	BRIDGE WASHING NO. 5	EACH	1	1		
59200106	BRIDGE WASHING NO. 6	EACH	1	1		
59200107	BRIDGE WASHING NO. 7	EACH	1	1		
59200108	BRIDGE WASHING NO. 8	EACH	1		1	
59200109	BRIDGE WASHING NO. 9	EACH	1		1	
59200110	BRIDGE WASHING NO. 10	EACH	1			1
67100100	MOBILIZATION	L SUM	1	0.7	0.2	0.1
70100310	TRAFFIC CONTROL AND PROTECTION, STANDARD 701421	L SUM	1	1		
70100420	TRAFFIC CONTROL AND PROTECTION, STANDARD 701411	EACH	3	3		
70100450	TRAFFIC CONTROL AND PROTECTION, STANDARD 701201	L SUM	1		0.67	0.33

COMMITMENTS

No Commitments have been made for this project.

GENERAL NOTES

Location 3 & 7: S.N. 090-0001 (Murray Baker) and S.N. 090-0114 (Pekin) - Entire Structure shall be done in accordance with Section 592 of the "Standard Specifications for Road and Bridge Construction, Adopted January 1, 2012 (Revised January 1, 2015)".

Locations 1 & 4: S.N. 090-0070 (Old McClugage EB US 150) and S.N. 090-0122 (Bob Michel) -
 Expansion Joints: 15 feet either side of deck joints down to the bearings, top of pier and abutment caps.
 (090-0070) Old McClugage Bridge: In addition to the expansion joints, wash the overhead truss, all structural steel 22 feet above the bridge deck, lower cord, outside stringer, and bottom of the bottom flange.

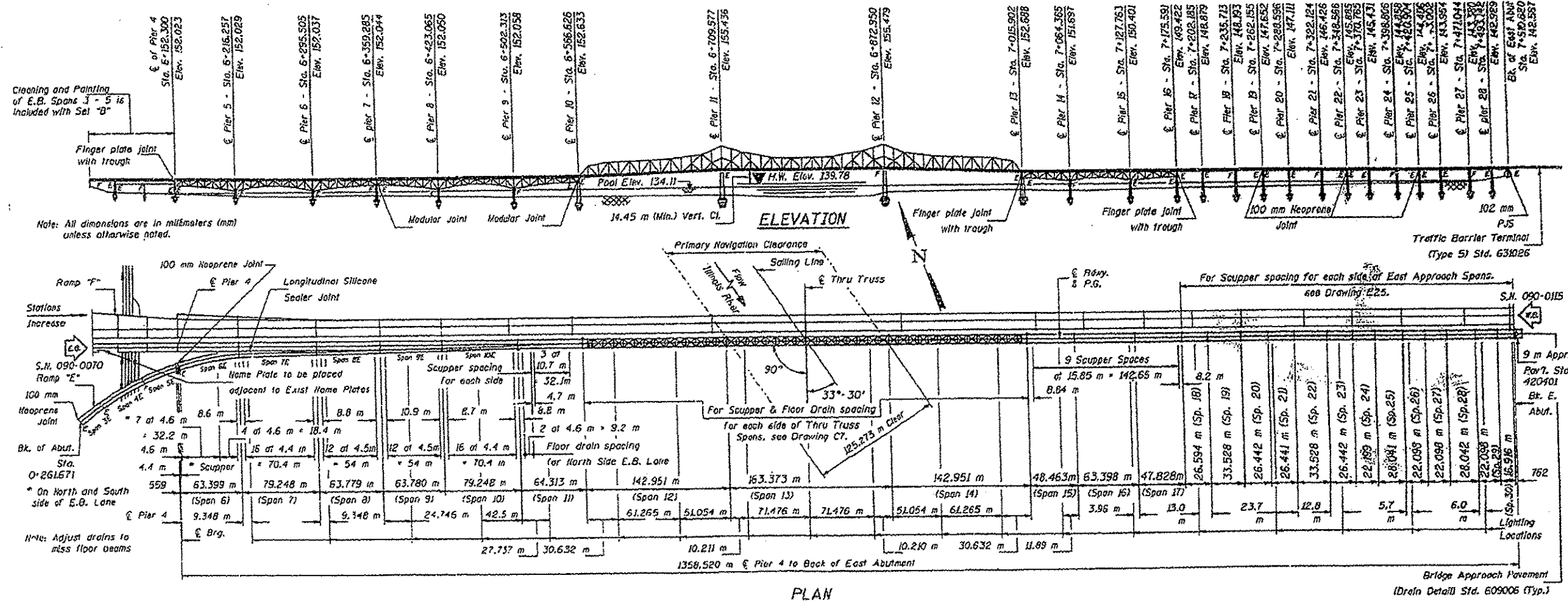
All other Locations: 2, ~~5~~, ~~6~~, 8, 9, and 10 -
 Expansion joints: 15 feet either side of deck joints down to the bearings, top of pier and abutment caps.
 Entire lower cord, outside face and the bottom of the bottom flange of the stringer beam along the truss, outside fascia beam and/or outside girder on the approach spans.
 All structural steel 22 feet above of the bridge deck .

All bridge Locations 1 - 10 shall include washing of the bridge deck surfaces, deck drains, and drainage systems. This work will not be paid for separately, but will be included in the cost of the bridge washing pay items.

FILE NAME :	USER NAME :	DESIGNED :	REVISED :	STATE OF ILLINOIS DEPARTMENT OF TRANSPORTATION	GENERAL NOTES	F.A. RTE.	SECTION	COUNTY	TOTAL SHEETS	SHEET NO.	CONTRACT NO. 68C81	
C:\Users\aubrayge\Desktop\0468C81-FY 16	aubrayge	BRIDGE WASHING.DGN	REVIS			VAR	D-4 BRIDGE WASHING 2016			14		5
Default		PLOT SCALE :	CHECKED :			ILLINOIS FED. AID PROJECT						
		PLOT DATE :	DATE :			SCALE:	SHEET	OF	SHEETS	STA.		TO STA.

Location 1 (EB US 150) Old McClugage Bridge

Information only

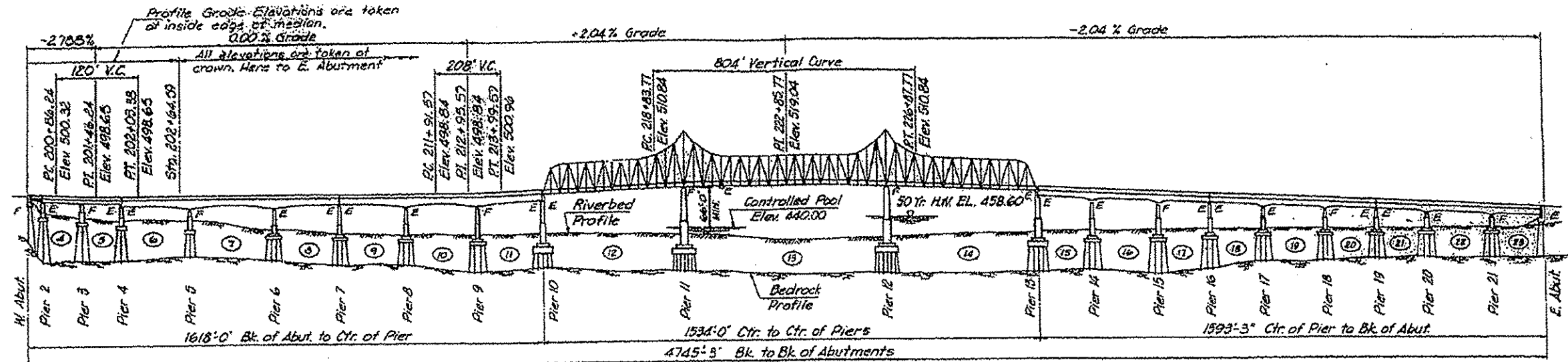


S.N.090-0070

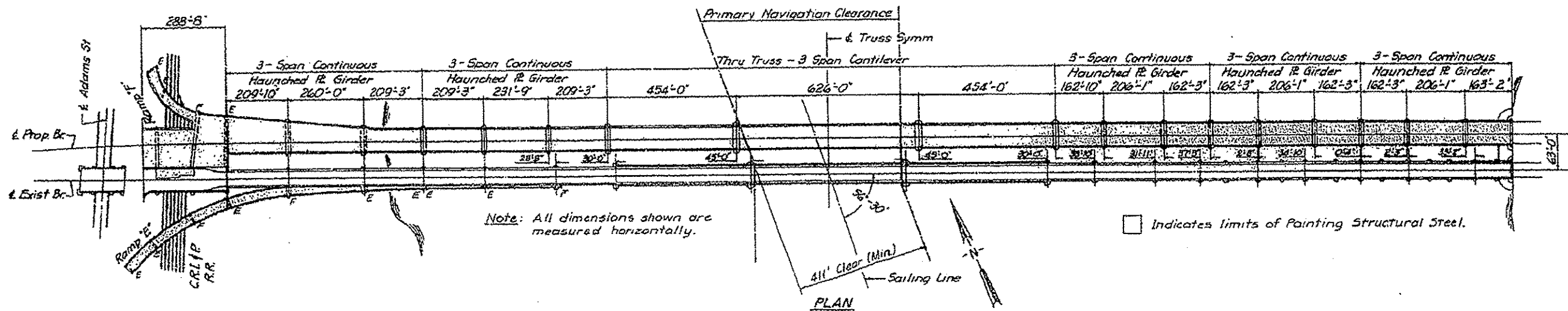
FILE NAME =	USER NAME = eubreyg	DESIGNED -	REVISED -	STATE OF ILLINOIS DEPARTMENT OF TRANSPORTATION		LOCATION 1 090-0070 Old McClugage Bridge		F.A. RTE.	SECTION	COUNTY	TOTAL SHEETS	SHEET NO.
C:\Users\aubreyg\Desktop\0468C01-FY 16	Bridge Washing.dgn	DRAWN -	REVISED -					VAR	D-4 BRIDGE WASHING 2016	-	14	6
Default	PLOT SCALE = 100.0000 / 1 in.	CHECKED -	REVISED -					CONTRACT NO. 68C81			ILLINOIS FED. AID PROJECT	
	PLOT DATE = 10/22/2015	DATE -	REVISED -					SCALE:	SHEET	OF	SHEETS	STA.

* TAZEWELL, MARSHALL & MASON

Location 2 (WB US 150) New McClugage Bridge Information only



Note:
Station Equation
Sta. 201+67.45 Back +
Sta. 201+64.59 Forward



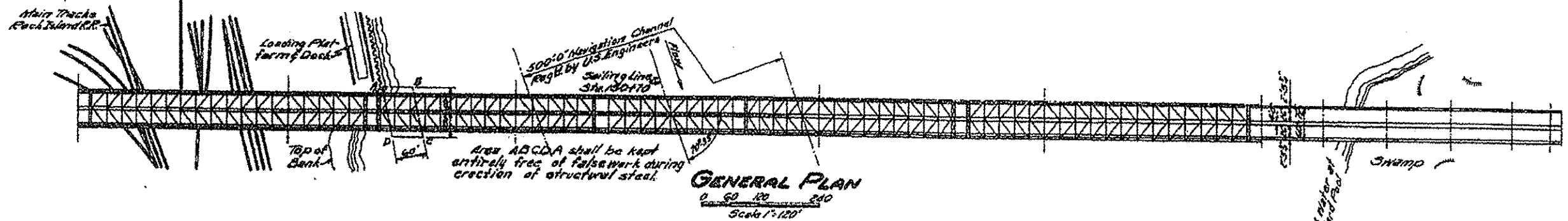
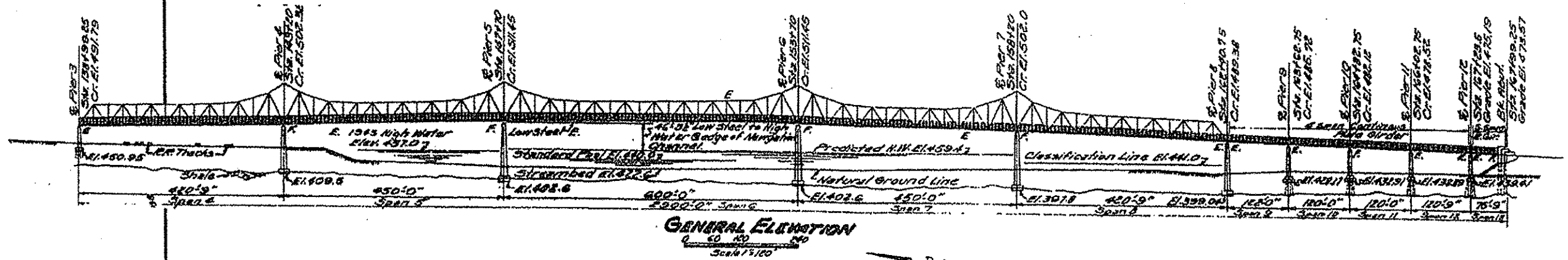
S.N.090-0115

FILE NAME :	USER NAME : eubrayge	DESIGNED -	REVISED -	STATE OF ILLINOIS DEPARTMENT OF TRANSPORTATION	LOCATION 2 090-0115 New McClugage Bridge	F.A. RTE.	SECTION	COUNTY	TOTAL SHEETS	SHEET NO.
C:\Users\subrayge\Desktop\0468C81-FY 16	Bridge Washing.dgn	DRAWN -	REVISED -			VAR	D-4 BRIDGE WASHING 2016		14	7
Default	PLOT SCALE = 1/8"=1'-0"	CHECKED -	REVISED -							
	PLOT DATE = 10/22/2015	DATE -	REVISED -			SCALE:	SHEET	OF	SHEETS	STA. TO STA.
• TAZEWELL, MARSHALL & MASON ILLINOIS FED. AID PROJECT										

Location 3 (EB and WB I-74 and IL 29) Murray Baker Bridge

Information only

180' of truss removed in 2005



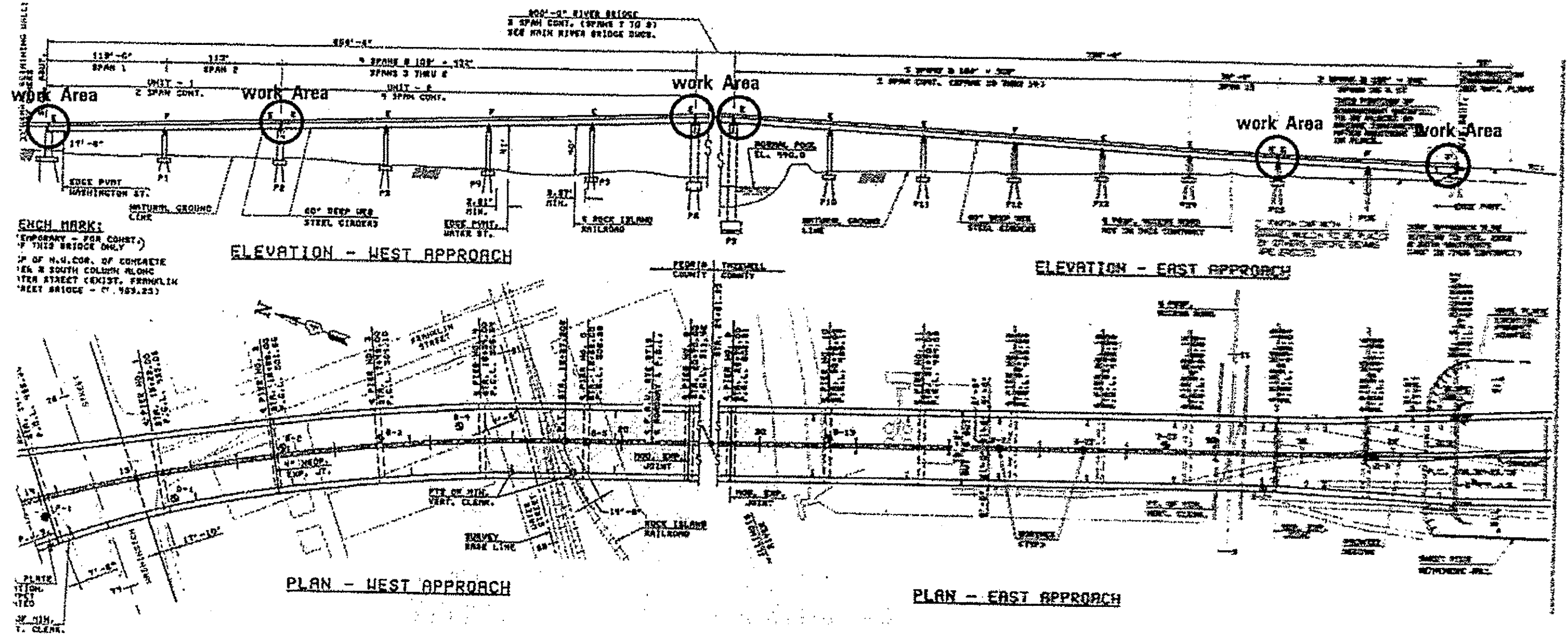
S.N. 090-0001

FILE NAME :	USER NAME : aubrags	DESIGNED -	REVISED -	STATE OF ILLINOIS DEPARTMENT OF TRANSPORTATION	LOCATION 3 090-0001 Murray Baker Bridge	F.A. RTE.	SECTION	COUNTY	TOTAL SHEETS	SHEET NO.	
Cr:\Users\aubrags\Desktop\0468C81-FY 16	Bridge Washing.dgn	DRAWN -	REVISED -			VAR	D-4 BRIDGE WASHING 2016			14	8
Default	PLOT SCALE = 100.0000 "/in.	CHECKED -	REVISED -			CONTRACT NO. 68C81					
	PLOT DATE = 10/22/2015	DATE -	REVISED -			ILLINOIS FED. AID PROJECT					

• TAZEWELL, MARSHALL & MASON

Location 4 (IL 40) Bob Michel Bridge

Information only

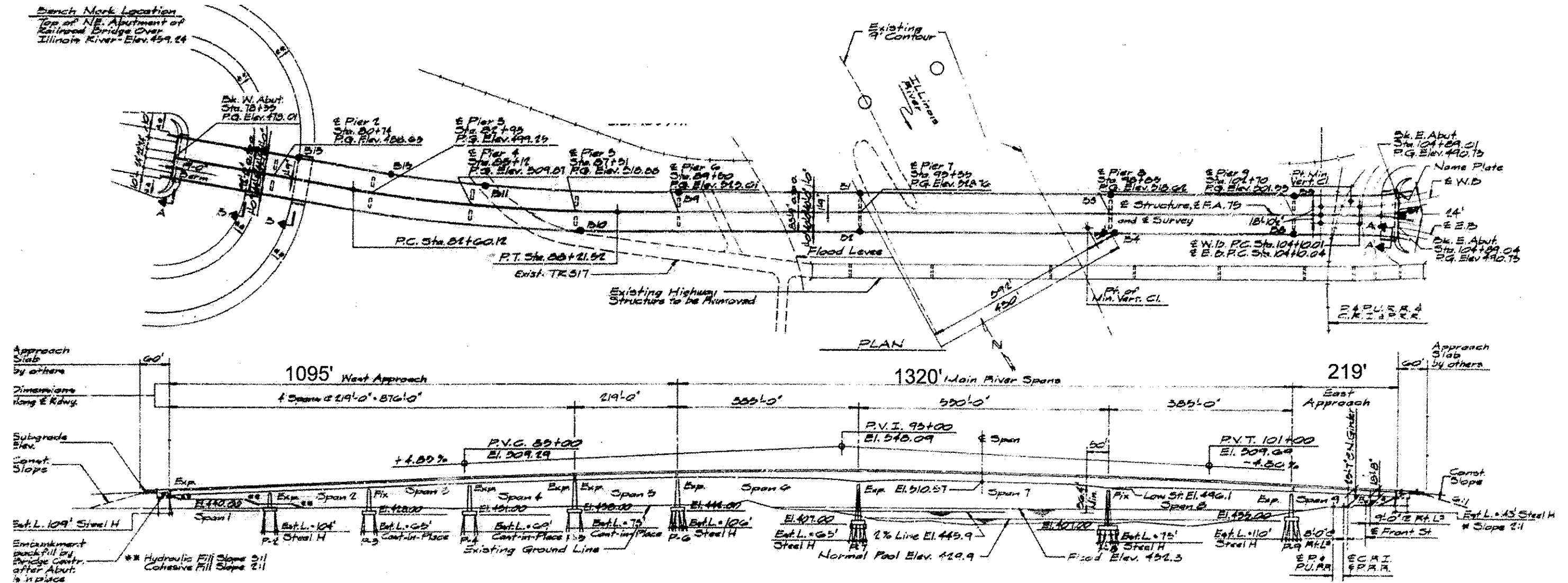


S.N. 090-0122

FILE NAME :	USER NAME : eubrayga	DESIGNED -	REVISED -	STATE OF ILLINOIS DEPARTMENT OF TRANSPORTATION	LOCATION 4 090-0122 Bob Michel Bridge	F.A. RTE.	SECTION	COUNTY	TOTAL SHEETS	SHEET NO.	
C:\Users\neubrayga\Desktop\0468C81-FY 16	Bridge Washing.dgn	DRAWN -	REVISED -			VAR	0-4 BRIDGE WASHING 2016			14	9
Default	PLOT SCALE = 100.0000' / 1"	CHECKED -	REVISED -			CONTRACT NO. 68C81					
	PLOT DATE = 10/22/2015	DATE -	REVISED -			ILLINOIS FED. AID PROJECT					

*Sheet 10 is Deleted

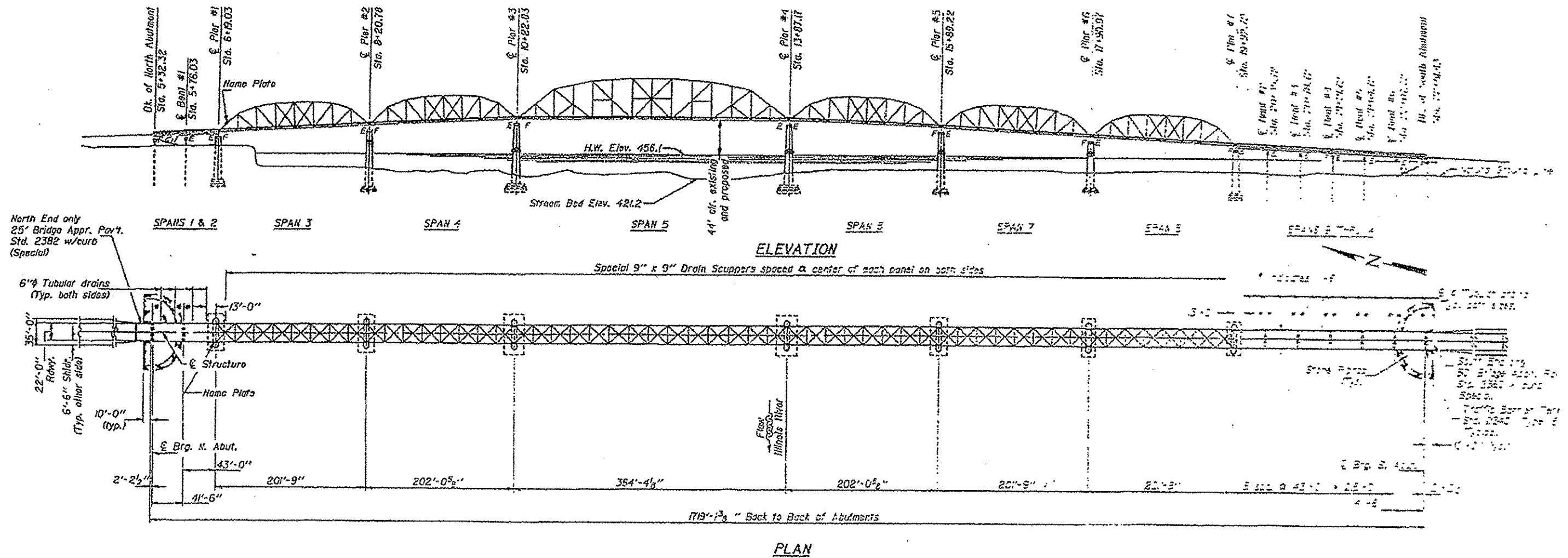
Location 7 (IL 9 over IL River) For Information Only



S.N. 090-0114

FILE NAME =	USER NAME = aubrjgs	DESIGNED -	REVISED -	STATE OF ILLINOIS DEPARTMENT OF TRANSPORTATION	LOCATION 7 090-0114 Pekin Bridge	F.A. RTE.	SECTION	COUNTY	TOTAL SHEETS	SHEET NO.	
C:\Users\aubrjgs\Desktop\0468C81-FY 16	Bridge Washing.dgn	DRAWN -	REVISED -			VAR	D-4 BRIDGE WASHING 2016			14	11
Default	PLOT SCALE = 1/8" = 1' / in.	CHECKED -	REVISED -			CONTRACT NO. 68C81					
	PLOT DATE = 10/22/2015	DATE -	REVISED -			ILLINOIS FED. AID PROJECT					

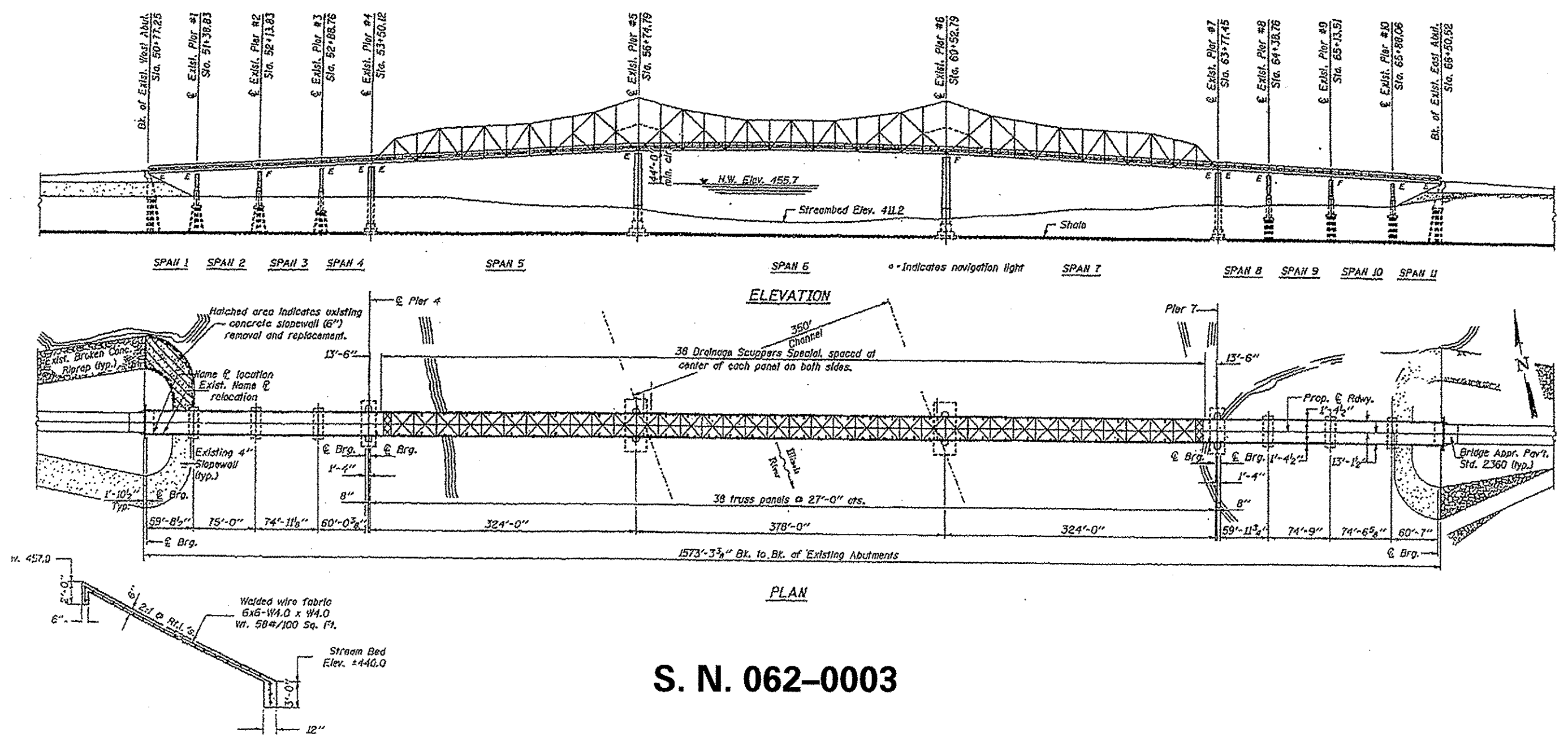
Location 8 (IL 18 over IL River) Information only



S. N. 062-0036

FILE NAME : C:\Users\aubreyga\Desktop\0468C01-FY 16	USER NAME : aubreyga	DESIGNED -	REVISED -	STATE OF ILLINOIS DEPARTMENT OF TRANSPORTATION	LOCATION 8 062-0036 Henry Bridge	F.A. RTE.	SECTION	COUNTY	TOTAL SHEETS	SHEET NO.	
		DRAWN -	REVISED -			VAR	D-4 BRIDGE WASHING 2016			14	12
		CHECKED -	REVISED -			CONTRACT NO. 68C81					
		DATE -	REVISED -			SCALE:	SHEET	OF	SHEETS	STA.	TO STA.

Location 9 (IL 17 over IL River) For Information Only

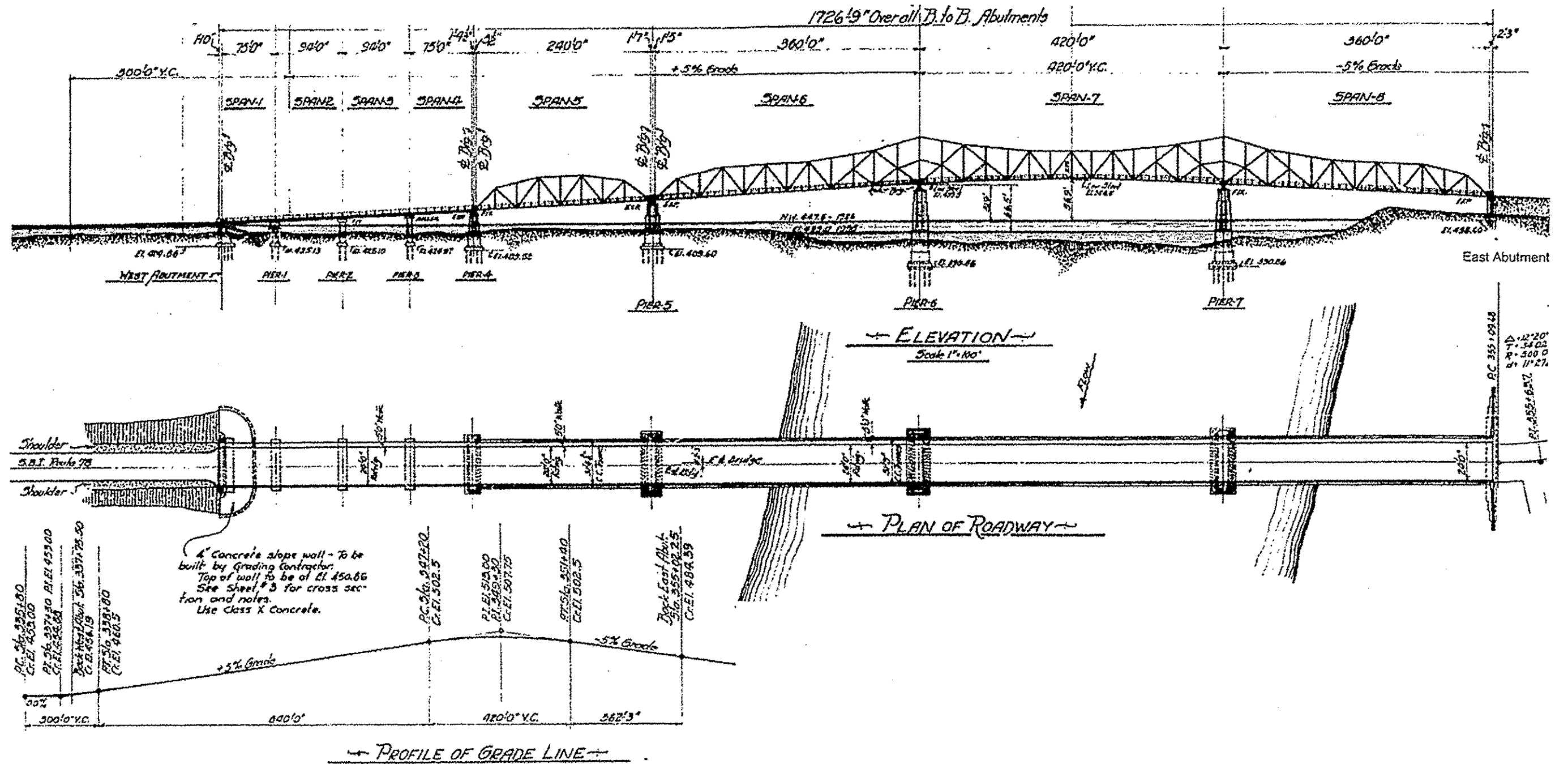


S. N. 062-0003

FILE NAME >	USER NAME > aubreyg	DESIGNED -	REVISED -	STATE OF ILLINOIS DEPARTMENT OF TRANSPORTATION	LOCATION 9 062-0003 Lacon Bridge	F.A. RTE.	SECTION	COUNTY	TOTAL SHEETS	SHEET NO.
C:\Users\aubreyg\Desktop\0468C01-FY 16	Bridge Washing.dgn	DRAWN -	REVISED -			VAR	D-4 BRIDGE WASHING 2016	*	14	13
Default	PLOT SCALE > 100.0000 "/in.	CHECKED -	REVISED -							CONTRACT NO. 68C81
	PLOT DATE > 10/22/2015	DATE -	REVISED -			SCALE:	SHEET OF SHEETS	STA. TO STA.		ILLINOIS/FED. AID PROJECT

• TAZEWELL, MARSHALL & MASON

Location 10 (US 136 over IL River) For Information Only



S. N. 063-0002

FILE NAME =	USER NAME = aubreyga	DESIGNED -	REVISED -	STATE OF ILLINOIS DEPARTMENT OF TRANSPORTATION	LOCATION 10 063-0002 Havana Bridge	F.A. RTE.	SECTION	COUNTY	TOTAL SHEETS	SHEET NO.	
C:\Users\aubreyga\Desktop\0468C81-FY 16	Bridge Washing.dgn	DRAWN -	REVISED -			VAR	D-4 BRIDGE WASHING 2016			14	14
Default	PLOT SCALE = 100.0000 1" = 100'	CHECKED -	REVISED -			SCALE: SHEET OF SHEETS STA. TO STA.		CONTRACT NO. 6BC81			
	PLOT DATE = 10/22/2015	DATE -	REVISED -			ILLINOIS FED. AID PROJECT					

• TAZEWELL, MARSHALL & MASON