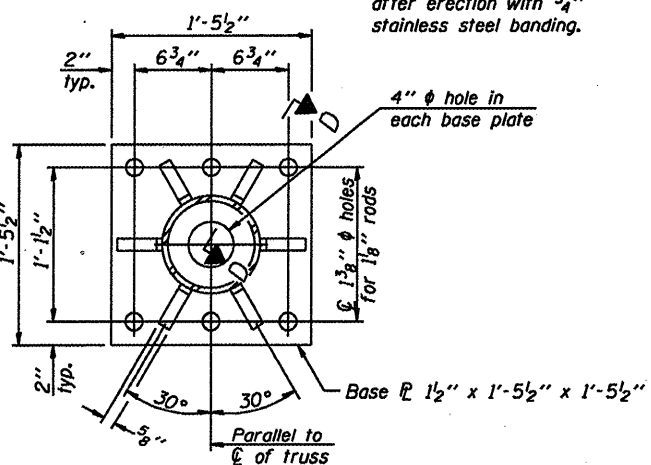
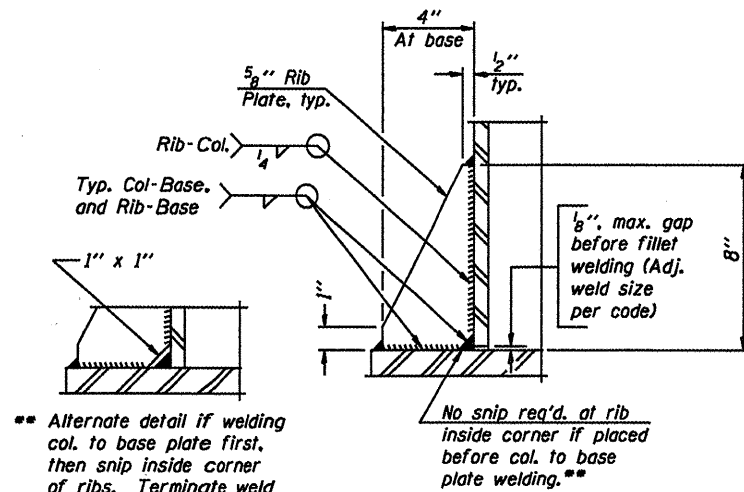


DETAIL B

Ribs shall be cut to fit slope of pipe.

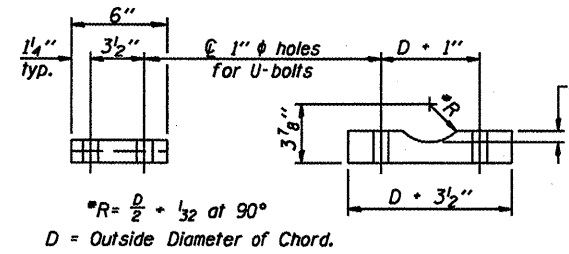


SECTION B-B



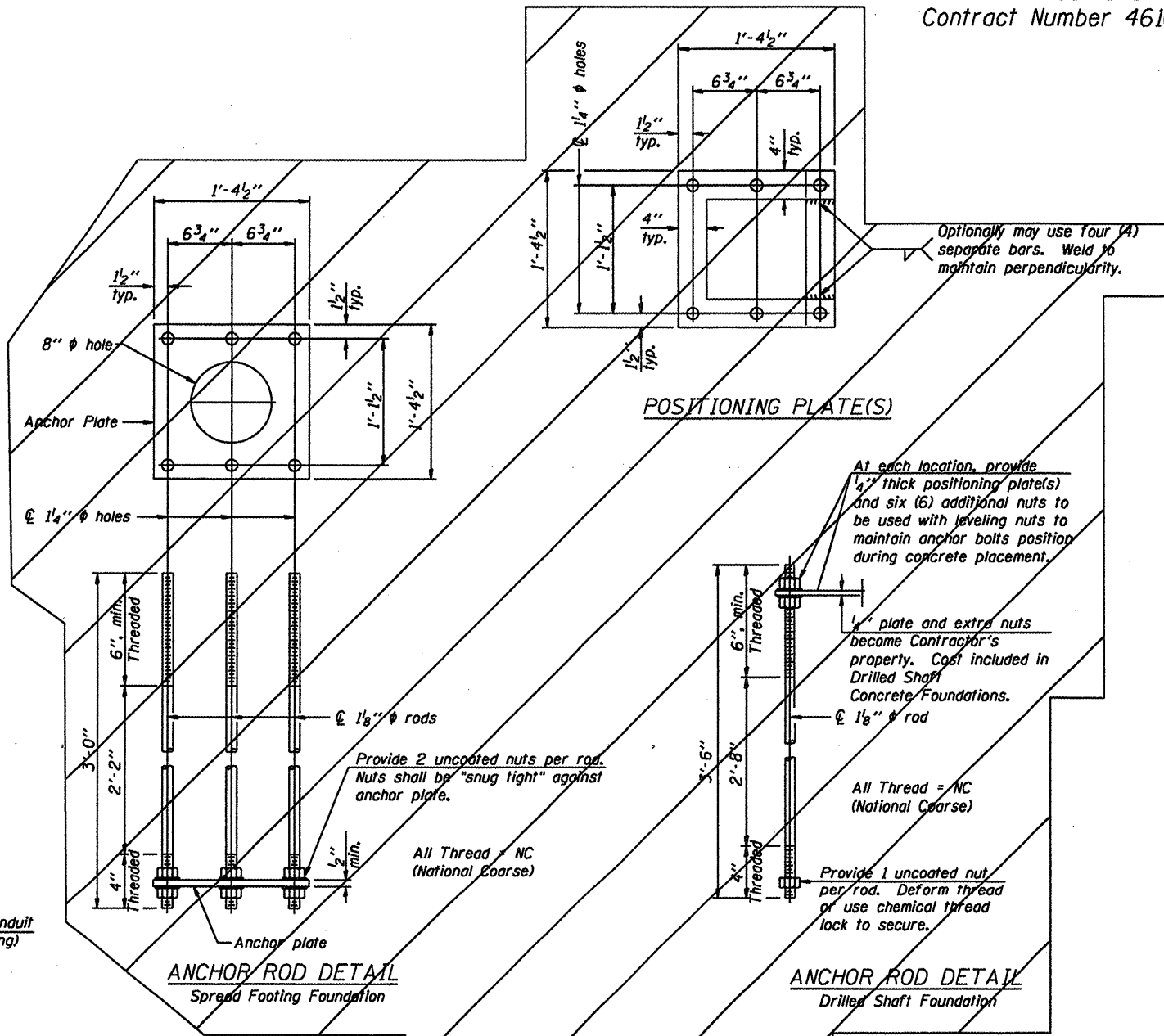
SECTION D-D

Alternate detail if welding col. to base plate first, then snip inside corner of ribs. Terminate weld on rib 1/4" from snip.



SADDLE SHIM DETAIL
ASTM B26 Alloy 356-F
or
ASTM B209 Alloy 6061-T651
(4 required per sign truss)

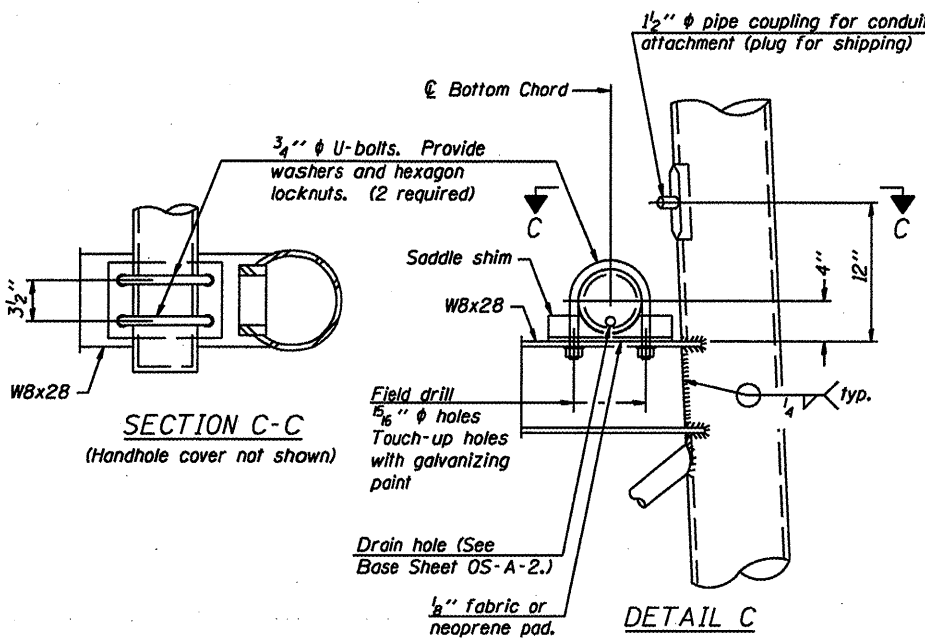
| Truss Chord Nominal Dia. | a |
|--------------------------|--------|
| 5" | 3/4" |
| 5 1/2" | 13/16" |
| 6" | 7/8" |
| 6 1/2" | 15/16" |



TYPE I-A TRUSS
8" ϕ PIPE SUPPORT FRAME DETAILS

OVERHEAD SIGN STRUCTURES
SUPPORT FRAME DETAILS ALUMINUM TRUSS

District 8
Sign Structure Replacement



DETAIL C

| NUMBER | REVISION | DATE |
|--------|----------|------|
| | | |
| | | |
| | | |
| | | |
| | | |

| | |
|------------|------------------------------------|
| DESIGNED - | 20 |
| CHECKED - | EXAMINED |
| DRAWN - | PASSED |
| CHECKED - | ENGINEER OF BRIDGES AND STRUCTURES |