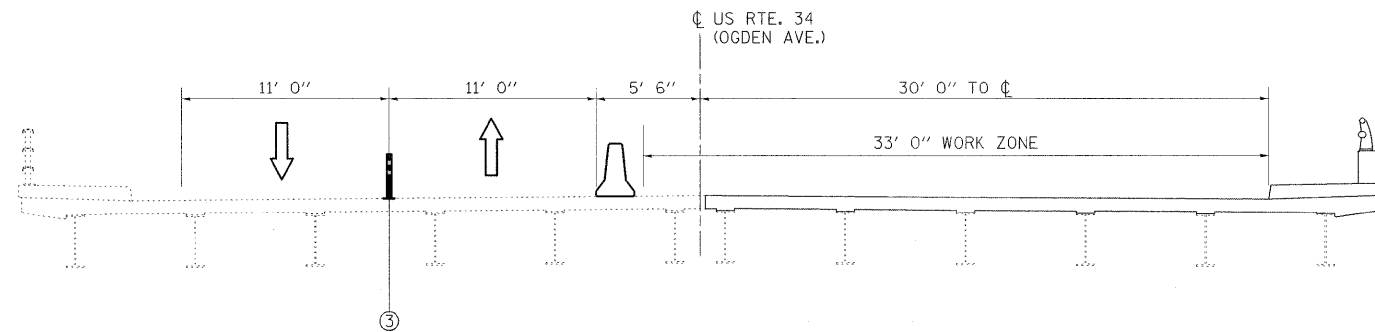


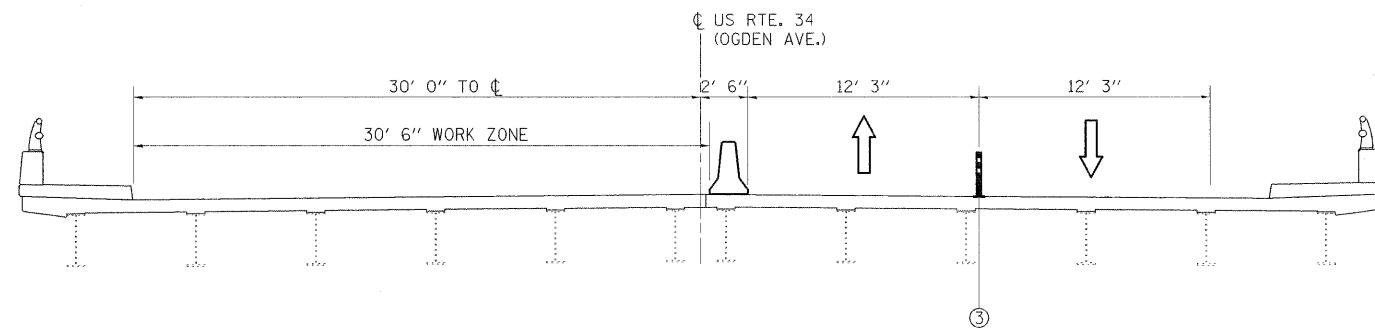
**U.S. RTE. 34 - PRE-STAGE**

(LOOKING EAST)



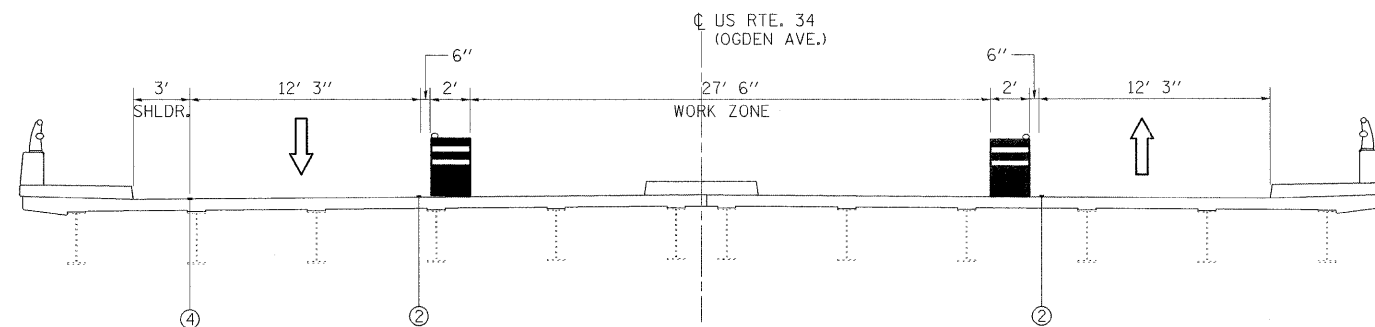
**U.S. RTE. 34 - STAGE I**

(LOOKING EAST)



**U.S. RTE. 34 - STAGE II**

(LOOKING EAST)



**U.S. RTE. 34 - STAGE III**

(LOOKING EAST)

**PRE-STAGE**

**CONSTRUCTION:**

- REMOVE CONCRETE MEDIAN STA. 640+70 TO 643+75 AND STA. 646+15 TO 647+89 TO BE FLUSH WITH ADJACENT PAVEMENT WITHIN THE LIMITS SHOWN.
- PLACE TEMPORARY CONCRETE BARRIER AND IMPACT ATTENUATOR, TEMPORARY.
- REMOVE CONFLICTING MARKINGS AND IMPLEMENT STAGE I MOT PAVEMENT MARKINGS WITHIN THE WORK ZONE.

**MAINTENANCE OF TRAFFIC:**

- CLOSE INSIDE LANE IN BOTH DIRECTIONS PER THE MOT PLANS.

**STAGE I**

**CONSTRUCTION:**

- PERFORM STRUCTURAL WORK ON SOUTH HALF OF DECK AND ABUTMENTS.
- PARTIAL REMOVAL AND RESURFACING OF ROADWAY (TO PERMIT TRAFFIC FOR STAGE II WORK).
- MISCELLANEOUS WORK ALONG THE SOUTH EDGE OF PAVEMENT.
- RELOCATE TEMPORARY CONCRETE BARRIER AND IMPACT ATTENUATOR, TEMPORARY.
- REMOVE CONFLICTING MARKINGS AND IMPLEMENT STAGE II MOT PAVEMENT MARKINGS WITHIN THE WORK ZONE.

**MAINTENANCE OF TRAFFIC:**

- U.S. 34 - TRAFFIC REDUCED TO ONE LANE IN EACH DIRECTION, AND SHIFTED TO THE NORTH SIDE OF THE EXISTING BRIDGE DECK.
- IL 53 - EITHER THE INSIDE OR OUTSIDE LANE(S) WILL BE CLOSED, PER THE MAINTENANCE OF TRAFFIC PLANS (PLANS SHOW WORK IN BOTH DIRECTIONS). CLOSURES ARE ANTICIPATED TO BE LIMITED TO OFF-PEAK HOURS, UNLESS OTHERWISE APPROVED BY THE ENGINEER.

**STAGE II**

**CONSTRUCTION:**

- PERFORM STRUCTURAL WORK ON NORTH HALF OF DECK AND ABUTMENTS.
- PARTIAL REMOVAL AND RESURFACING OF ROADWAY (TO PERMIT TRAFFIC FOR STAGE III WORK).
- MISCELLANEOUS WORK ALONG THE NORTH EDGE OF PAVEMENT.
- REMOVE TEMPORARY CONCRETE BARRIER AND IMPACT ATTENUATOR, TEMPORARY.
- REMOVE CONFLICTING MARKINGS AND IMPLEMENT SHORT-TERM PAVEMENT MARKINGS.

**MAINTENANCE OF TRAFFIC:**

- U.S. 34 - TRAFFIC REDUCED TO ONE LANE IN EACH DIRECTION, AND SHIFTED TO THE SOUTH SIDE OF THE EXISTING BRIDGE DECK.
- IL 53 - EITHER THE INSIDE OR OUTSIDE LANE(S) WILL BE CLOSED, PER THE MAINTENANCE OF TRAFFIC PLANS (PLANS SHOW WORK IN BOTH DIRECTIONS). CLOSURES ARE ANTICIPATED TO BE LIMITED TO OFF-PEAK HOURS, UNLESS OTHERWISE APPROVED BY THE ENGINEER.

**STAGE III**

**CONSTRUCTION:**

- COMPLETE MEDIAN REMOVAL AND RECONSTRUCT CONCRETE MEDIAN. ON DECK AND PAVEMENT.
- RESURFACE APPROACH AND DEPARTURE PAVEMENT IN BOTH DIRECTIONS.
- APPLY BOTH SHORT-TERM AND PERMANENT PAVEMENT MARKINGS AND RAISED REFLECTIVE PAVEMENT MARKERS.
- OTHER MISCELLANEOUS WORK.

**MAINTENANCE OF TRAFFIC:**

- U.S. 34 - CLOSE INSIDE LANE IN BOTH DIRECTIONS PER THE MOT PLANS. ONCE MEDIAN HAS BEEN RECONSTRUCTED AND THERE ARE NO DROP-OFFS TO THE PAVEMENT, DAILY LANE CLOSURES PER STD. 701601 MAY BE USED.
- IL 53 - EITHER THE INSIDE OR OUTSIDE LANE(S) WILL BE CLOSED, PER THE MAINTENANCE OF TRAFFIC PLANS (PLANS SHOW WORK IN BOTH DIRECTIONS). CLOSURES ARE ANTICIPATED TO BE LIMITED TO OFF-PEAK HOURS, UNLESS OTHERWISE APPROVED BY THE ENGINEER.

SEE SHEET 2 FOR TRAFFIC CONTROL AND PROTECTION NOTES.

**LEGEND**

- ① EXISTING PAVEMENT MARKING
- ② TYPE III TEMPORARY PAVEMENT MARKING TAPE, FOR WET CONDITIONS, 4" SOLID YELLOW LINE (TYP)
- ③ TYPE III TEMPORARY PAVEMENT MARKING TAPE, FOR WET CONDITIONS, 4" DOUBLE YELLOW LINE @ 11" O.C. (TYP) STA. 43+25 TO STA. 46+65 FLEXIBLE DELINEATORS
- ④ TYPE III TEMPORARY PAVEMENT MARKING TAPE, FOR WET CONDITIONS, 4" SOLID WHITE LINE (TYP)

PLOT DATE = 8/7/2009  
 FILE NAME = K:\112253\02\civil\cadd\sheet\2253\02\MOT.dgn  
 PLOT SCALE = #PLOT\_SCALE#  
 USER NAME = jbracey  
 MODEL = MOT.Dwg Sections



200 West Front Street  
Wheaton, IL 60187

DESIGNED -	REVISD -
DRAWN - MH	REVISD -
CHECKED - MK	REVISD -
DATE - 8/7/09	REVISD -

STATE OF ILLINOIS  
DEPARTMENT OF TRANSPORTATION

US RTE. 34 OVER IL RTE. 53  
STRUCTURE NO. 022-0033

MAINTENANCE OF TRAFFIC  
TYPICAL SECTIONS

F.A.P. RTE.	SECTION	COUNTY	TOTAL SHEETS	SHEET NO.
311	10HB-R		53	9
CONTRACT NO. 60B92				
FED. ROAD DIST. NO. 1 ILLINOIS FED. AID PROJECT				

SCALE: SHEET NO. 9 OF 53 SHEETS STA. \_\_\_\_\_ TO STA. \_\_\_\_\_