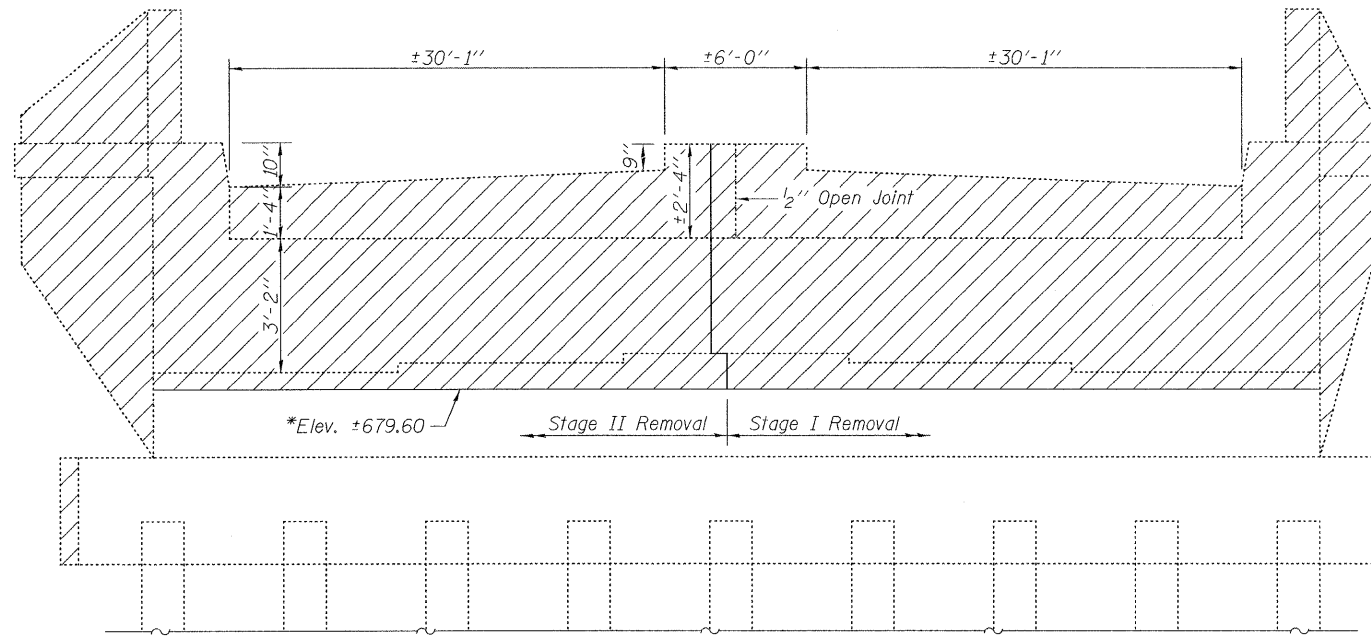


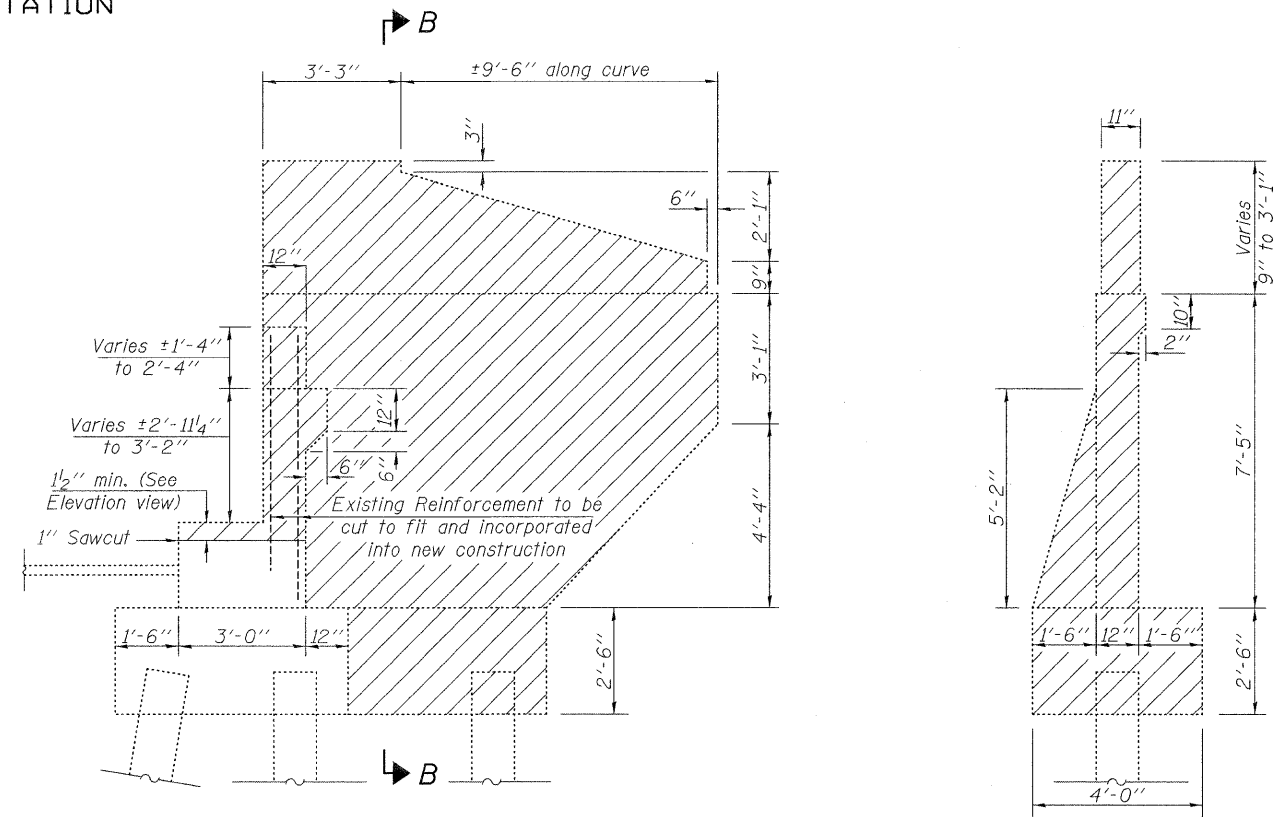
STATE OF ILLINOIS
DEPARTMENT OF TRANSPORTATION



ELEVATION

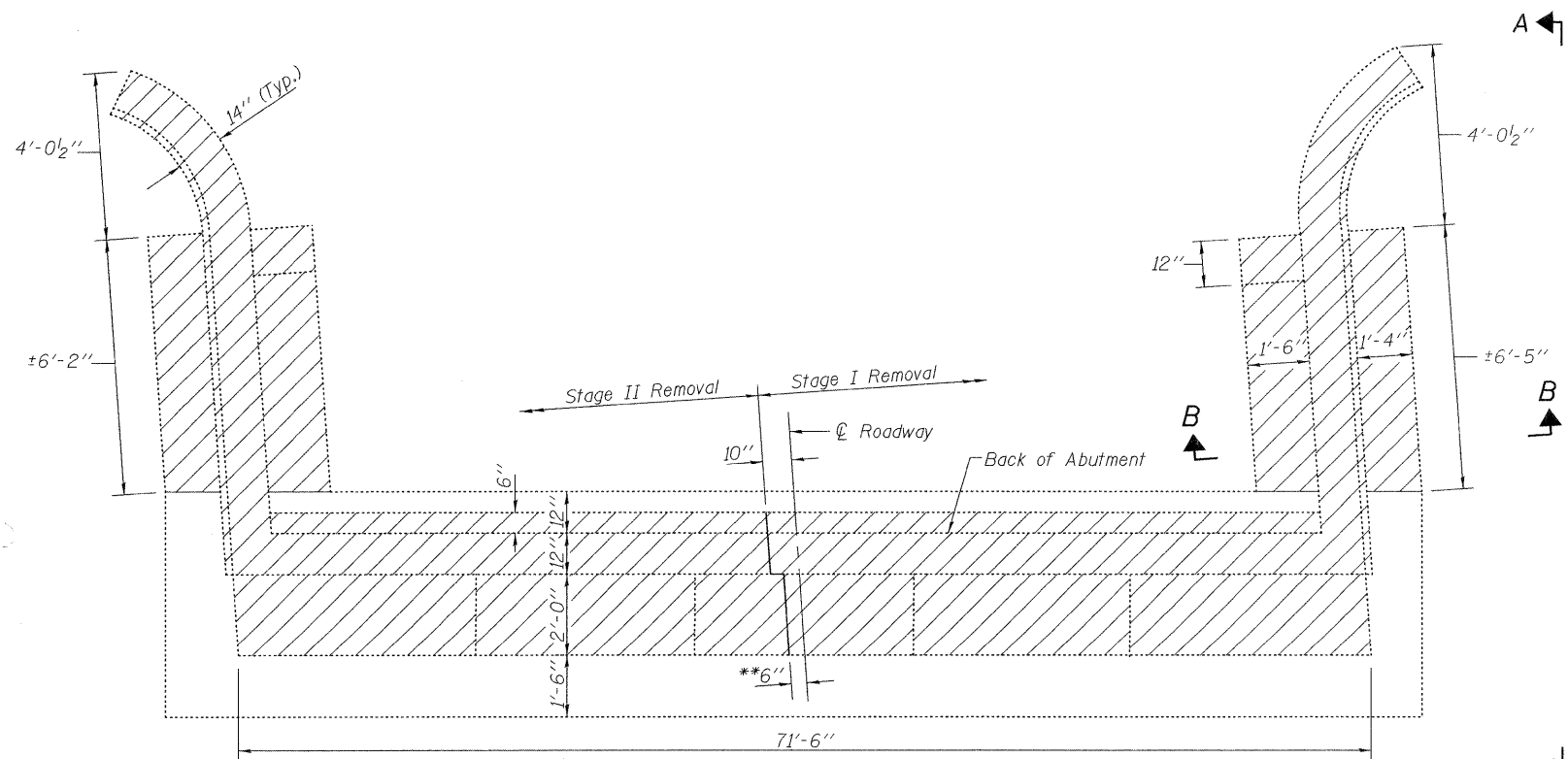
East Abutment shown, looking east.
West Abutment similar but opposite hand.

*Remove a minimum of 1/2" of existing concrete from existing abutment seats. If any unsound concrete remains, additional concrete shall be removed as directed by the Engineer. Additional removal to be paid as Concrete Removal.



VIEW A-A

SECTION B-B



PLAN

East Abutment shown.
West Abutment similar but opposite hand.

**Avoid damaging or undermining existing bearing plate during concrete removal.

NOTES

Existing reinforcement bars extending into the removal area shall be blast cleaned to gray metal and straightened. Blast cleaning and straightening shall be included with the cost of Concrete Removal.
Existing reinforcement not extending into areas of new construction shall be cut at the removal line and removed. Cost included with Concrete Removal.
Existing reinforcement bars which have lost more than 25% of their original diameter shall be supplemented by new epoxy coated bars of the same diameter, spliced in place. Furnishing and placing supplemental epoxy coated reinforcement bars shall be included with the cost of Reinforcement Bars, Epoxy Coated.
Care shall be exercised by the contractor during and following removal operations to ensure that the existing rebar remaining in place are not damaged. All protruding rebar shall be cleaned, straightened, and properly positioned prior to concrete placement. Any rebar damaged during concrete removal shall be repaired or replaced using an approved Bar Splicer or Mechanical System. Cost included with Concrete Removal.

**BILL OF MATERIAL
(TWO ABUTMENTS)**

Item	Unit	Total
Concrete Removal	Cu. Yd.	60.6

LEGEND

Concrete Removal

DESIGNED	JMT
CHECKED	BLB
DRAWN	JMT
CHECKED	BLB

**ABUTMENT DETAILS - I
STRUCTURE NO. 022-0033**

rjngroup Excellence through Ownership 200 West Front Street Wheaton, IL 60187	SHEET NO. 22	F.A.P. RTE. 311	SECTION 10HB-R	COUNTY Du Page	TOTAL SHEETS 53	SHEET NO. 38
	27 SHEETS	CONTRACT NO. 60B92				
FED. ROAD DIST. NO. ILLINOIS FED. AID PROJECT						

8/7/2009 ka\11225510\structures\final_plans\Abutments\dgn