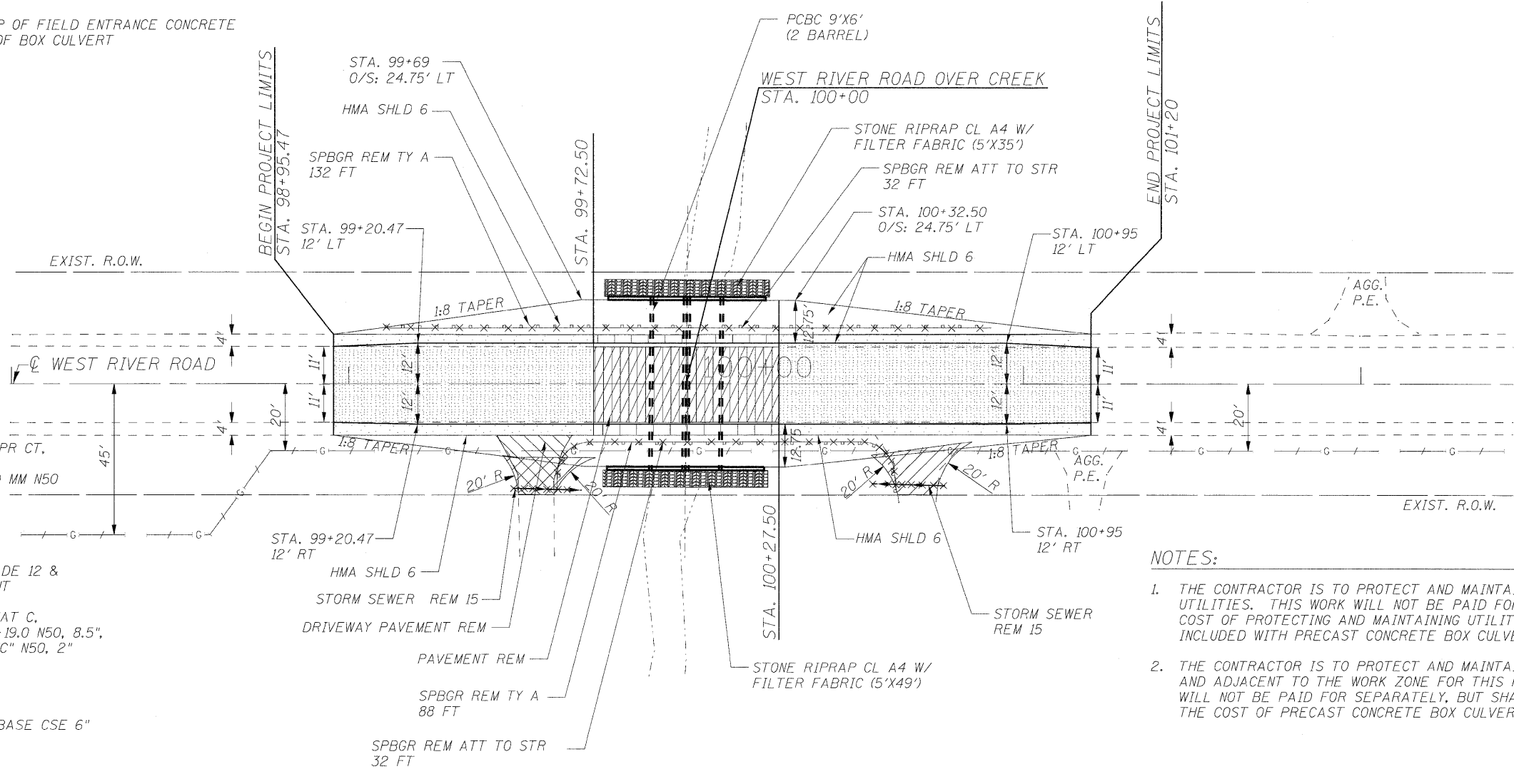




NOTE:

BENCHMARK #1 - CUT "□" IN TOP OF FIELD ENTRANCE CONCRETE
CULVERT HEADWALL ± 2' WEST OF BOX CULVERT
ELEV. = 552.88

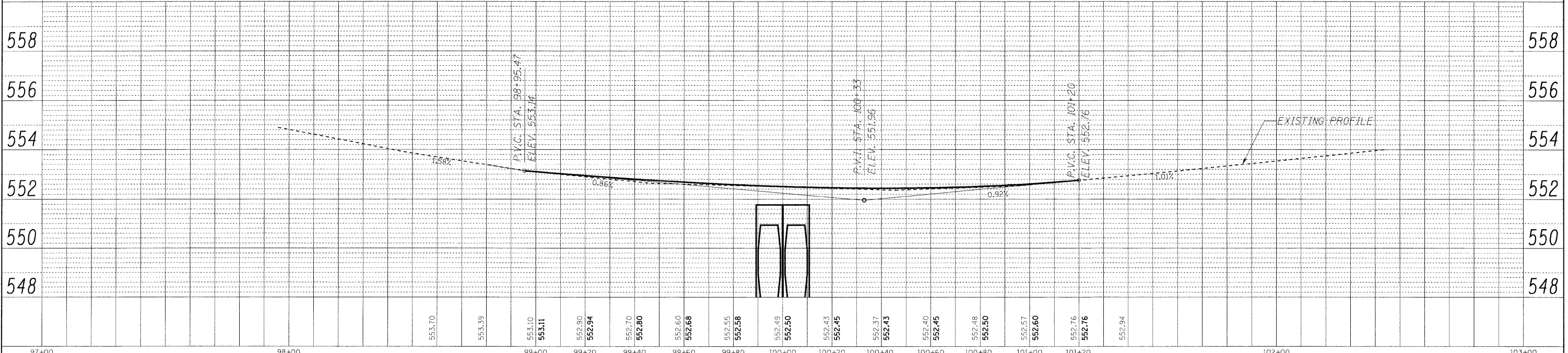
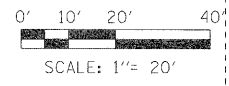


LEGEND

- PAVEMENT REM W/ BIT MATLS PR CT, HMA BC IL-19.0 N50, 11", HMA SC "C" N50, 2" & LEV BIND MM N50
- STONE RIPRAP CL A4 W/ FILTER FABRIC
- PAVED SHLD REMOVAL W/ SUB GRAN MAT C, AGG SUBGRADE 12 & HMA SHOULDER 6 REPLACEMENT
- PAVEMENT REM W/SUB GRAN MAT C, BIT MATLS PR CT, HMA BC IL-19.0 N50, 8.5", AGG SUBGRADE 12 & HMA SC "C" N50, 2"
- DRIVEWAY PAVEMENT REM
- HMA SC "C" N50, 2" AND HMA BASE CSE 6"
- PAVED SHLD REMOVAL W/ LEV BIND MM N50 & HMA SHOULDER 6" REPLACEMENT

NOTES:

1. THE CONTRACTOR IS TO PROTECT AND MAINTAIN ALL EXISTING UTILITIES. THIS WORK WILL NOT BE PAID FOR SEPARATELY, THE COST OF PROTECTING AND MAINTAINING UTILITIES SHALL BE INCLUDED WITH PRECAST CONCRETE BOX CULVERT 9'x6'.
2. THE CONTRACTOR IS TO PROTECT AND MAINTAIN ALL TREES WITHIN AND ADJACENT TO THE WORK ZONE FOR THIS PROJECT. THIS WORK WILL NOT BE PAID FOR SEPARATELY, BUT SHALL BE INCLUDED IN THE COST OF PRECAST CONCRETE BOX CULVERT 9'x6'.



DATE	
BY	
REVISIONS	
NO.	
DATE	
BY	
REVISIONS	
NO.	
DATE	
BY	
REVISIONS	
NO.	

DATE	
BY	
REVISIONS	
NO.	
DATE	
BY	
REVISIONS	
NO.	
DATE	
BY	
REVISIONS	
NO.	

	DESIGNED - MJY	REVISED -	STATE OF ILLINOIS DEPARTMENT OF TRANSPORTATION	PLAN AND PROFILE WEST RIVER ROAD OVER UN-NAMED TRIBUTARY TO KANKAKEE RIVER	F.A.U. RTE. 0327	SECTION 112 T-1	COUNTY WILL	TOTAL SHEETS 17	SHEET NO. 7
	DRAWN - ST, TSC	REVISED -			SCALE: 1" = 20' SHEET NO. 7 OF 17 SHEETS STA. 98+95.47 TO STA. 101+20		D-91-496-09 CONTRACT NO. 60G54 <small>FED. ROAD DIST. NO. ILLINOIS FED. AID PROJECT</small>		
	CHECKED - MJY, DC	REVISED -							
	DATE - 11/23/2009	REVISED -							