

F.A.U. RTE.	SECTION	COUNTY	TOTAL SHEETS	SHEET NO.
3565	2009-066 I	COOK	42	1
FED. ROAD DIST. NO. 1	ILLINOIS	CONTRACT NO. 60H72		

STATE OF ILLINOIS  
DEPARTMENT OF TRANSPORTATION  
DIVISION OF HIGHWAYS

**PROPOSED  
HIGHWAY PLANS**

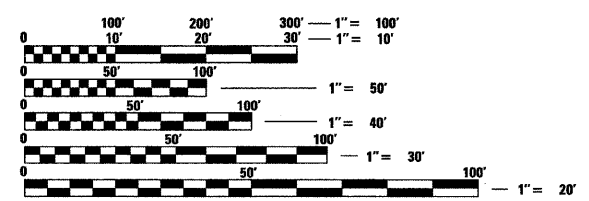
F.A.U. 3565 (IL 171 / ARCHER AVENUE)  
SECTION 2009-066 I  
IL 83 TO 104TH AVENUE / WILLOW SPRINGS ROAD  
SAFETY IMPROVEMENT  
PROJECT: ACHSIP-3565(003)  
COOK COUNTY  
C-91-778-09

FOR INDEX OF SHEETS, SEE SHEET NO. 2

THESE IMPROVEMENTS ARE LOCATED  
WITHIN THE VILLAGE OF WILLOW SPRINGS

**TRAFFIC DATA**

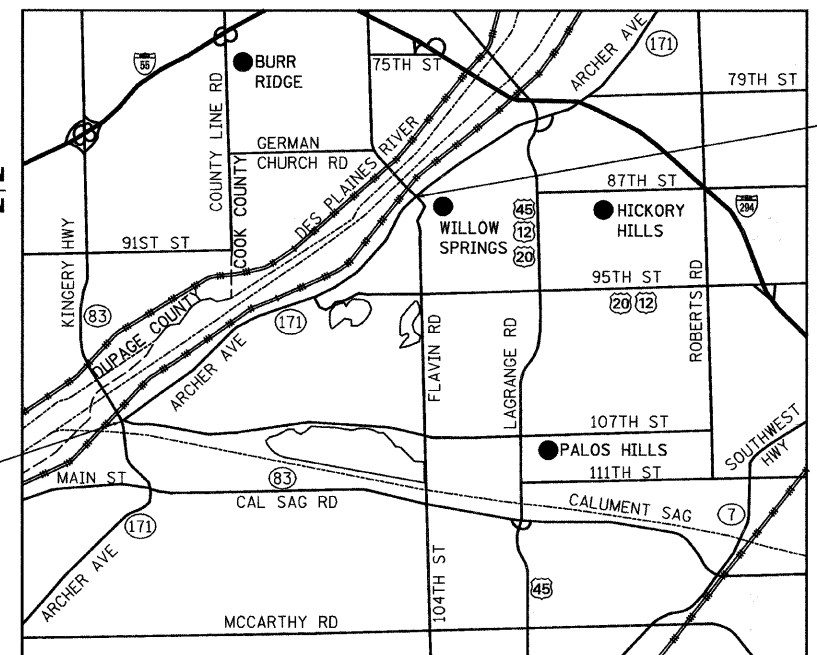
2007 ADT - 9,600  
POSTED SPEED LIMIT - 55 MPH



FULL SIZE PLANS HAVE BEEN PREPARED USING STANDARD ENGINEERING SCALES. REDUCED SIZED PLANS WILL NOT CONFORM TO STANDARD SCALES. IN MAKING MEASUREMENTS ON REDUCED PLANS, THE ABOVE SCALES MAY BE USED.

J.U.L.I.E.  
JOINT UTILITY LOCATION INFORMATION FOR EXCAVATION  
1-800-892-0123  
OR 811

BEGIN PROJECT  
STA. 306+68



END PROJECT  
STA. 502+17

R 11E | R 12E

PALOS & LEMONT (POSSIBLY LYONS) TOWNSHIP

LOCATION MAP  
1" = 5,000'

GROSS AND NET LENGTH OF PROJECT = 19,549 FT = 3.70 MI.

**Ciorba Group, Inc.**  
DESIGN FIRM  
REGISTRATION NUMBER  
184-001016  
CONSULTING ENGINEERS  
SUITE 402, 5507 NORTH CUMBERLAND AVE  
CHICAGO, ILLINOIS 60656 ☎ (773) 775-4009



LOCATION OF SECTION INDICATED THIS: - [shaded area]

STATE OF ILLINOIS  
DEPARTMENT OF TRANSPORTATION  
DIVISION OF HIGHWAYS  
SUBMITTED December 9, 2009  
Diana M. O'Keefe  
DEPUTY DIRECTOR OF HIGHWAYS, REGION ENGINEER  
January 29, 2010  
Scott E. Stolt, P.E.  
Acting ENGINEER OF DESIGN AND ENVIRONMENT  
January 29, 2010  
Christine M. Reed  
DIRECTOR OF HIGHWAYS, CHIEF ENGINEER

STEPHEN N. SUGG  
062-044117  
LICENSED PROFESSIONAL ENGINEER  
OF  
STATE OF ILLINOIS  
DATE: 12/7/2009  
SEAL EXPIRES: 11/30/2011

**PRINTED BY THE AUTHORITY  
OF THE STATE OF ILLINOIS**

CONTRACT NO. 60H72

DISTRICT 1 DESIGN PLAN PREPARATION ENGINEER: K. ENG (847)705-4247