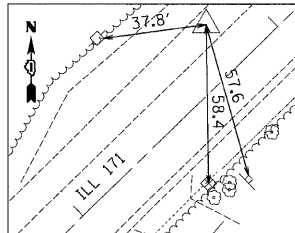
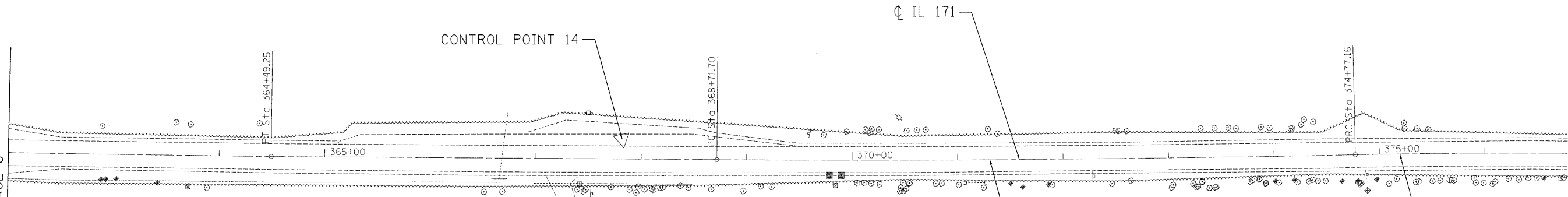


MATCH LINE STA. 362+00
SEE PAGE 8

MATCH LINE STA. 377+00



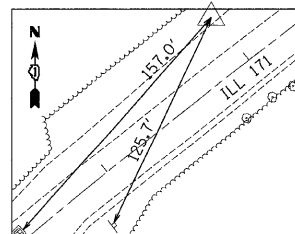
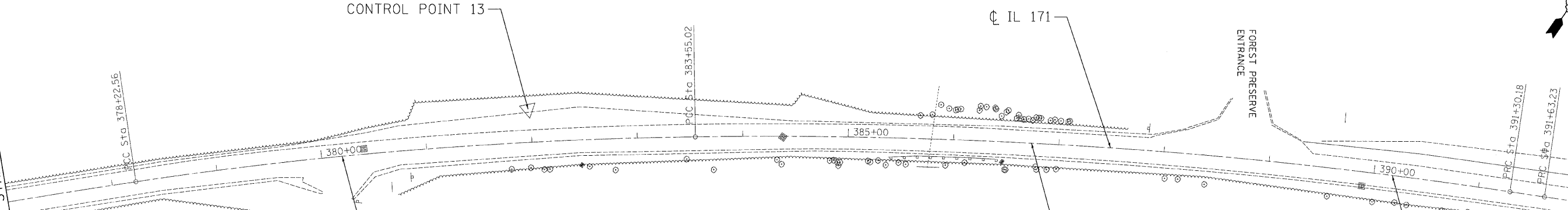
CONTROL POINT 14 PK NAIL
N: 1,836,961.88 STA: 367+81.61
E: 1,097,791.16 O/S: 18.8' LT
ELEV: 607.82

EXIST. CURVE ARCHER-5
PI STA. = 371+74.45
 $\Delta = 1^\circ 44' 04''$ (LT)
D = $0^\circ 17' 11''$
R = 20,000.00'
T = 302.75'
L = 605.46'
E = 2.29'
P.C. STA. = 368+71.70
P.T. STA. = 374+77.16

EXIST. CURVE ARCHER-6
PI STA. = 376+49.89
 $\Delta = 2^\circ 40' 46''$ (RT)
D = $0^\circ 46' 33''$
R = 7,386.29'
T = 172.74'
L = 345.41'
E = 2.02'
P.C. STA. = 374+77.16
P.T. STA. = 378+22.56

MATCH LINE STA. 377+00

MATCH LINE STA. 392+00
SEE PAGE 10



CONTROL POINT 13 PIPE W/CAP
N: 1,837,955.00 STA: 381+97.92
E: 1,098,804.33 O/S: 31.3' LT
ELEV: 614.91

EXIST. CURVE ARCHER-7
PI STA. = 380+89.19
 $\Delta = 7^\circ 37' 37''$ (RT)
D = $1^\circ 25' 57''$
R = 4,000.00'
T = 266.62'
L = 532.45'
E = 8.88'
P.C. STA. = 378+22.56
P.T. STA. = 383+55.02

EXIST. CURVE ARCHER-8
PI STA. = 387+43.46
 $\Delta = 9^\circ 19' 39''$ (RT)
D = $1^\circ 12' 12''$
R = 4,761.50'
T = 388.44'
L = 775.16'
E = 15.82'
P.C. STA. = 383+55.02
P.T. STA. = 391+30.18

EXIST. CURVE ARCHER-9
PI STA. = 391+46.71
 $\Delta = 0^\circ 22' 44''$ (LT)
D = $1^\circ 08' 45''$
R = 5,000.00'
T = 16.53'
L = 33.06'
E = 0.03'
P.C. STA. = 391+30.18
P.T. STA. = 391+63.23

FILE NAME: c:\p\proj\3386\3386_20\user\sign\Proposed\plan\3386-25-11.dgn

Ciorba Group, Inc.
CONSULTING ENGINEERS
5507 North Cumberland Avenue, Suite 402
Chicago, Illinois 60656
Tel: 773.775.4009 Fax 773.775.4014

USER NAME = cgotowski	DESIGNED - DD	REVISED -
PLOT SCALE = 50.0000' / IN.	DRAWN - DD	REVISED -
PLOT DATE = 12/16/2009	CHECKED - WBL	REVISED -
	DATE - 12/16/2009	REVISED -

**STATE OF ILLINOIS
DEPARTMENT OF TRANSPORTATION**

**ARCHER AVENUE (IL 171)
IL 83 TO 104TH ST
ALIGNMENT, TIES AND BENCHMARKS**

SCALE: 1"=50' SHEET NO. OF 42 SHEETS STA. TO STA.

F.A.P. RTE.	SECTION	COUNTY	TOTAL SHEETS	SHEET NO.
3565	2009-066 I	COOK	42	9
CONTRACT NO. 60H72				
FED. ROAD DIST. NO. 1 ILLINOIS FED. AID PROJECT				