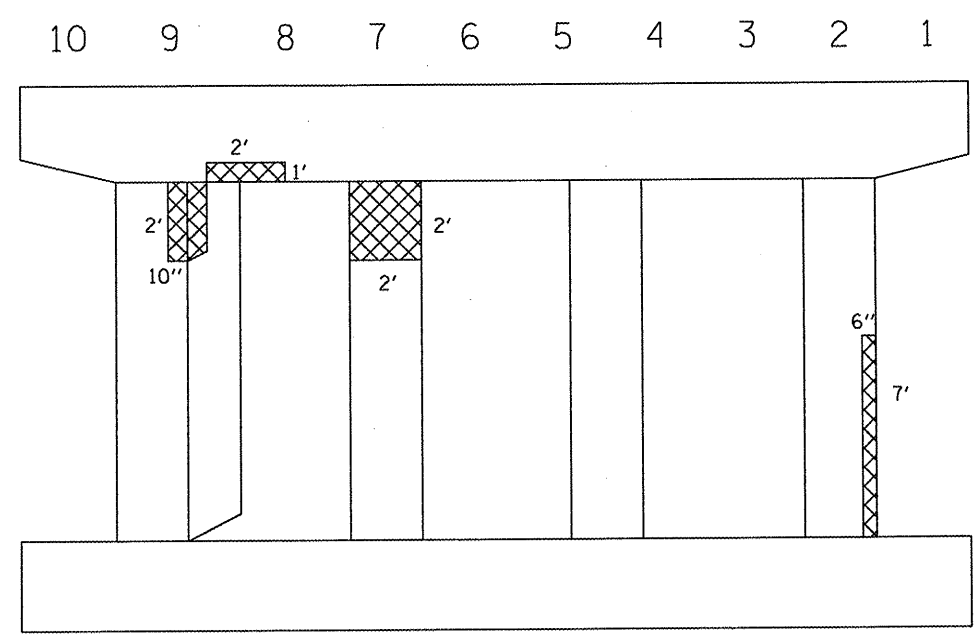
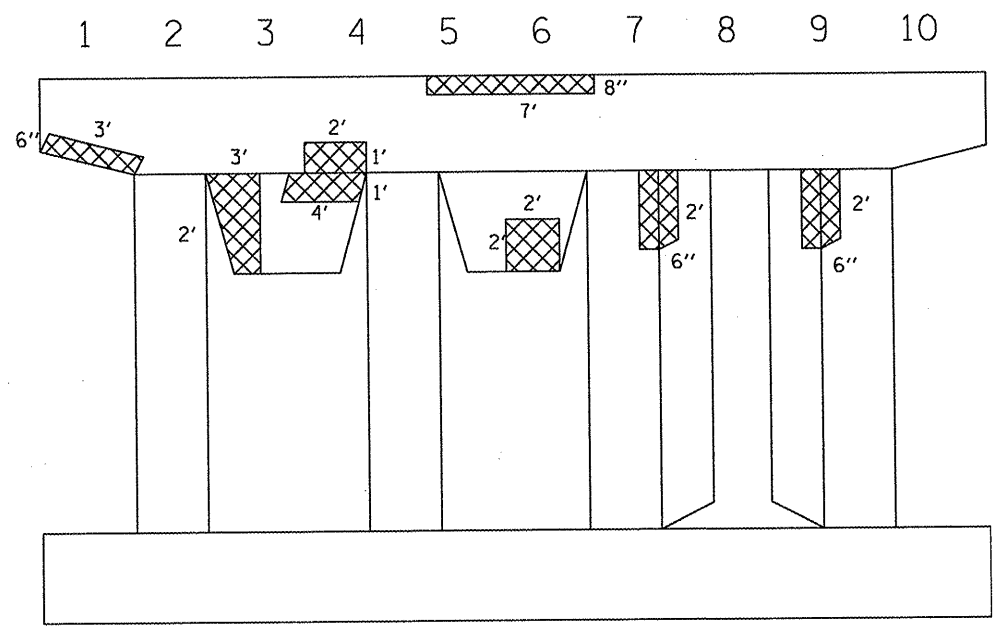


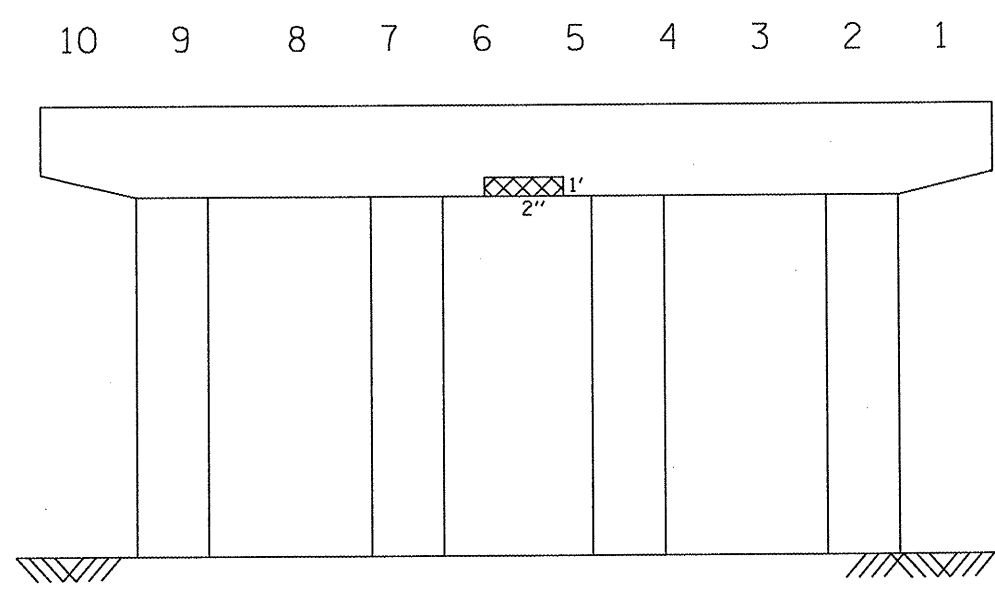
016-1029: I-290EB (IKE EXPWY/CONGRESS)/I-90/94 (DAN RYAN EXPWY)
 LOCATION: .5 M W. CHICAGO RIVER



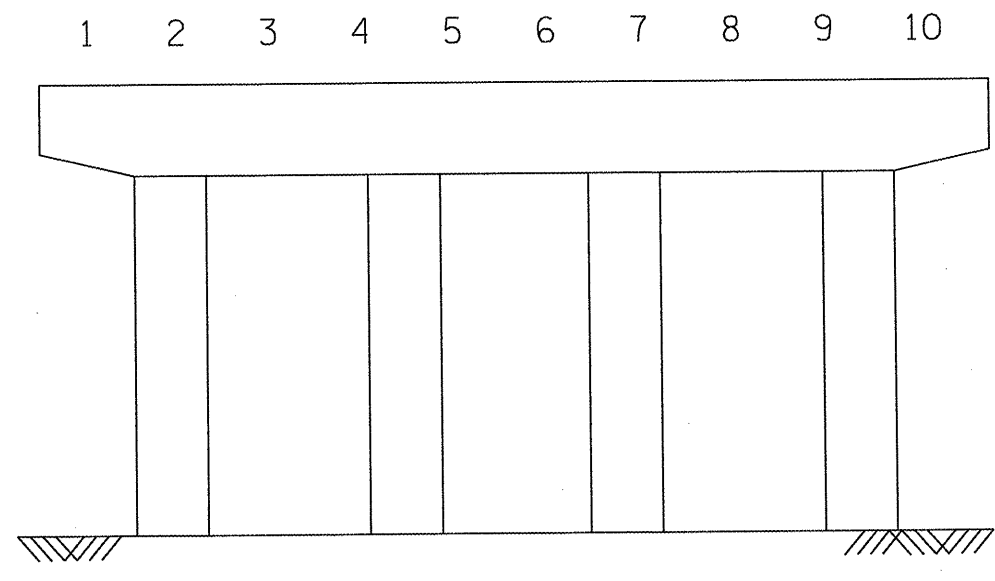
PIER 5 WEST FACE



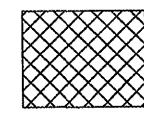
PIER 5 EAST FACE



PIER 6 WEST FACE
(RAMP SIDE OF PIER)



PIER 6 EAST FACE



STRUCTURAL REPAIR OF CONCRETE ≤ 5"

FILE NAME =	USER NAME = estimblek	DESIGNED -	REVISED -	STATE OF ILLINOIS DEPARTMENT OF TRANSPORTATION	LOCATION 1			F.A.P. RTE.	SECTION	COUNTY	TOTAL SHEETS	SHEET NO.
ci:\pwwork\pwwid\estimblek\d0161538\0161309-shr-plan.dgn		DRAWN -	REVISED -		SN 061-1029: I-290EB (IKE EXPWY/CONGRESS)/I-90/94 (DAN RYAN EXPWY)	VAR.	2009-069 BR	COOK	39	7		
PLOT SCALE = 100.0000' / IN.		CHECKED -	REVISED -		SCALE:	SHEET NO. 3 OF 4 SHEETS	STA.	TO STA.	CONTRACT NO. 60H74			
PLOT DATE = 1/5/2010		DATE -	REVISED -		ILLINOIS FED. AID PROJECT							