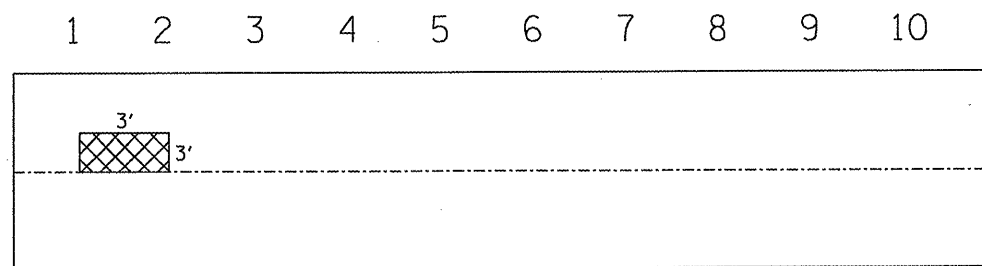
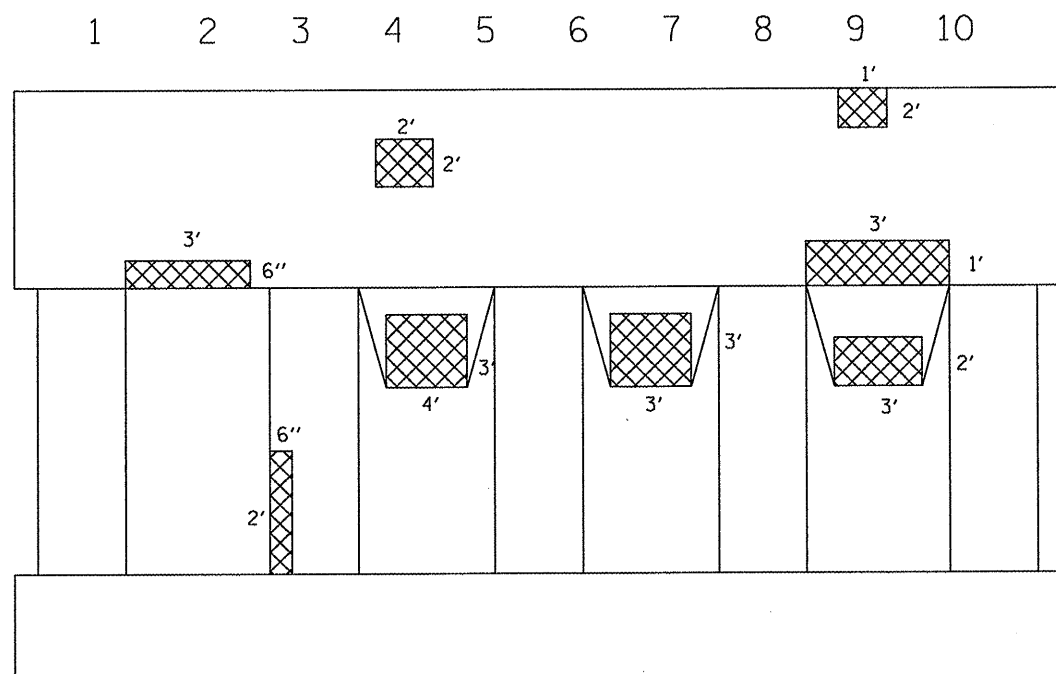


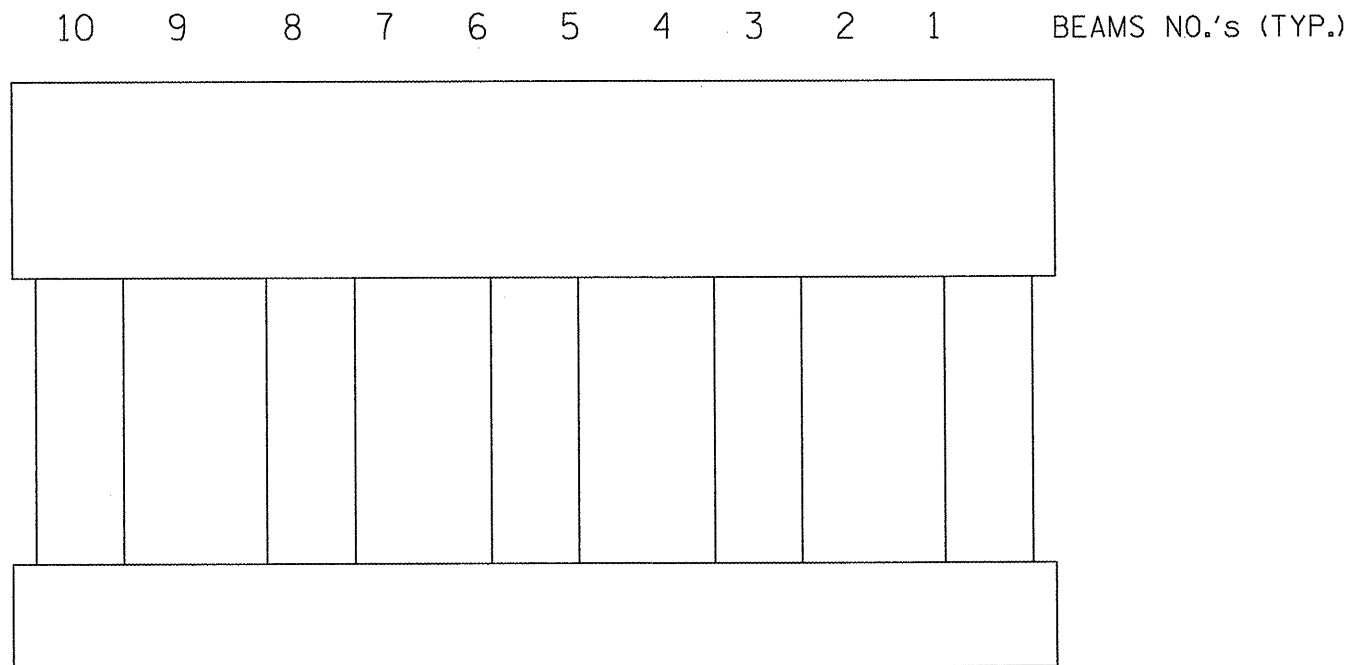
016-1030: I-290 WB (IKE EXPWY/CONGRESS)/I-90, 94 (DAN RYAN EXPWY)
 LOCATION: .5 M W. CHICAGO RIVER



PIER 1



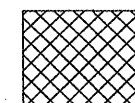
PIER 2 EAST FACE
 (DAN RYAN SIDE OF PIER)



PIER 2 WEST FACE

SN 016-1030 TOTAL BILL OF MATERIAL

DESCRIPTION	UNIT	QUANTITY
STRUCTURAL REPAIR OF CONCRETE \leq 5"	SQ FT	125



STRUCTURAL REPAIR OF CONCRETE \leq 5"

FILE NAME =	USER NAME = estmablek	DESIGNED -	REVISED -	STATE OF ILLINOIS DEPARTMENT OF TRANSPORTATION	LOCATION 2		F.A.P. RTE.	SECTION	COUNTY	TOTAL SHEETS	SHEET NO.
ca\pwwork\PIWIDOT\ESTIMABLEK\d0161538\0	01309-sht-plan.dgn	DRAWN -	REVISED -		SN 061-1030: I-290WB (IKE EXPWY/CONGRESS)-90/94 (DAN RYAN EXPWY)	VAR.	2009-069 BR	COOK	39	9	
PLOT SCALE = 100.0000' / IN.	CHECKED -	REVISED -	REVISED -		SCALE:	SHEET NO. 1 OF 4 SHEETS	STA.	TO STA.	CONTRACT NO. 60H77		
PLOT DATE = 1/5/2010	DATE -	REVISED -	REVISED -		ILLINOIS FED. AID PROJECT						