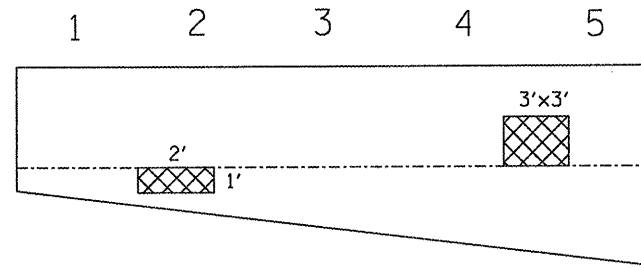
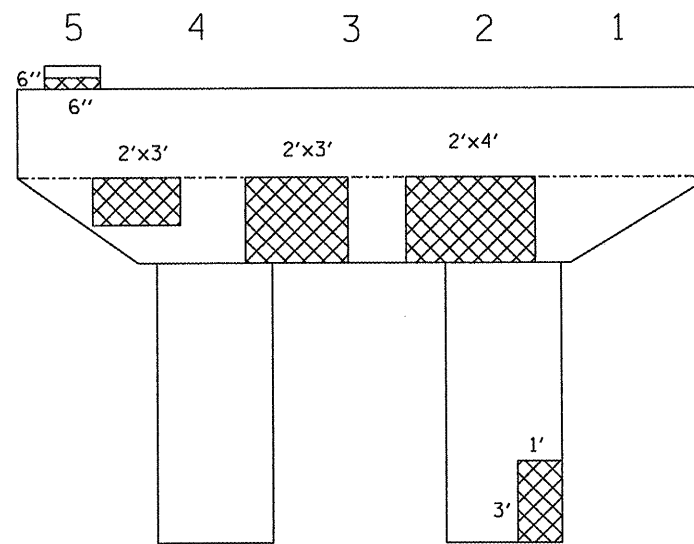


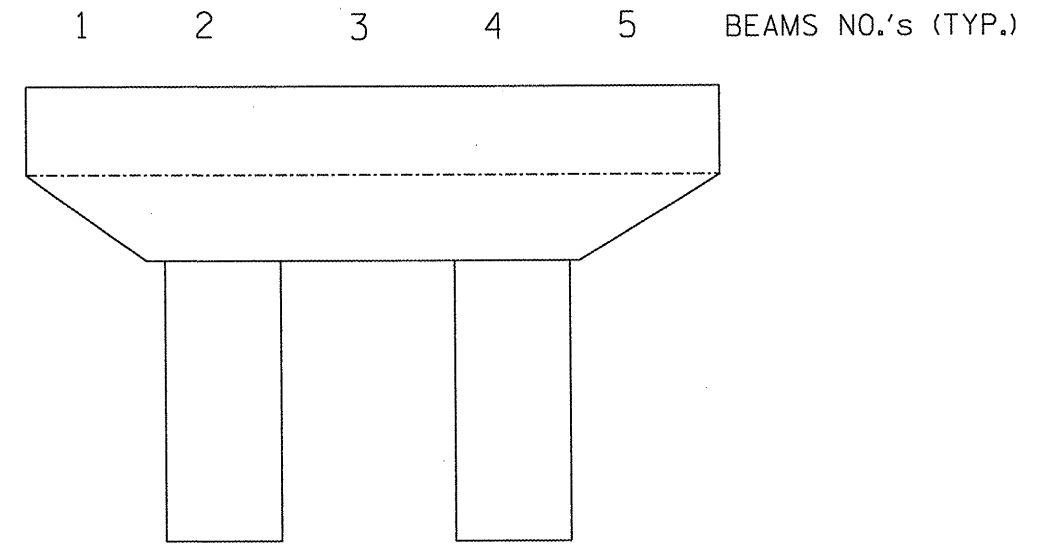
016-2451: I-94 NB RAMP TO I-290 EB OVER I-290 EB RAMP TO I-94 NB  
 LOCATION: .4 M N. ROOSEVELT RD



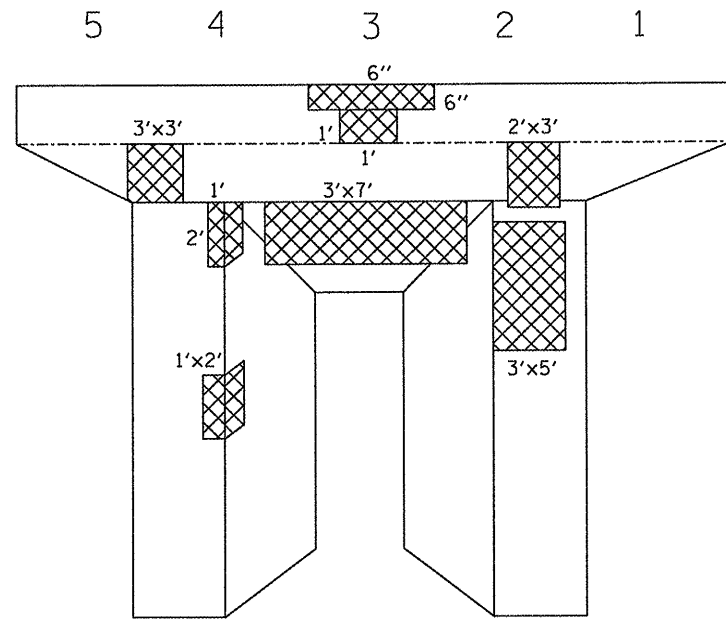
WEST ABUTMENT #30



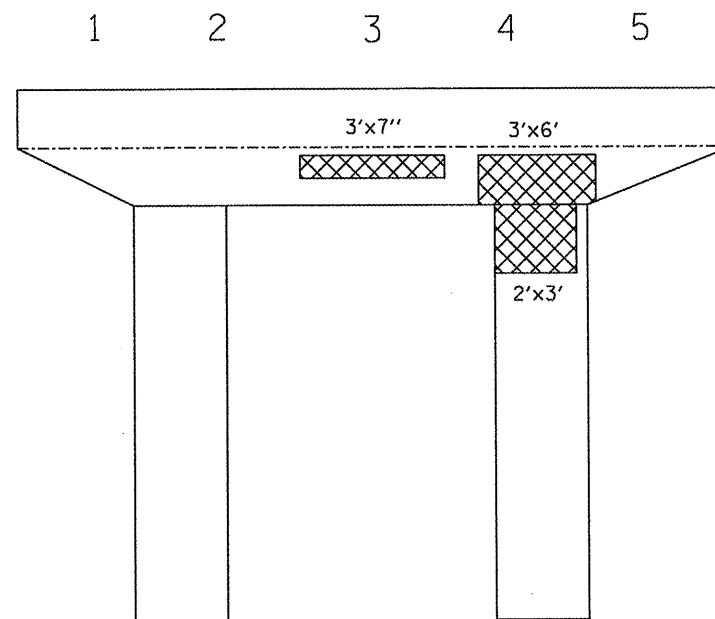
PIER 31 WEST FACE



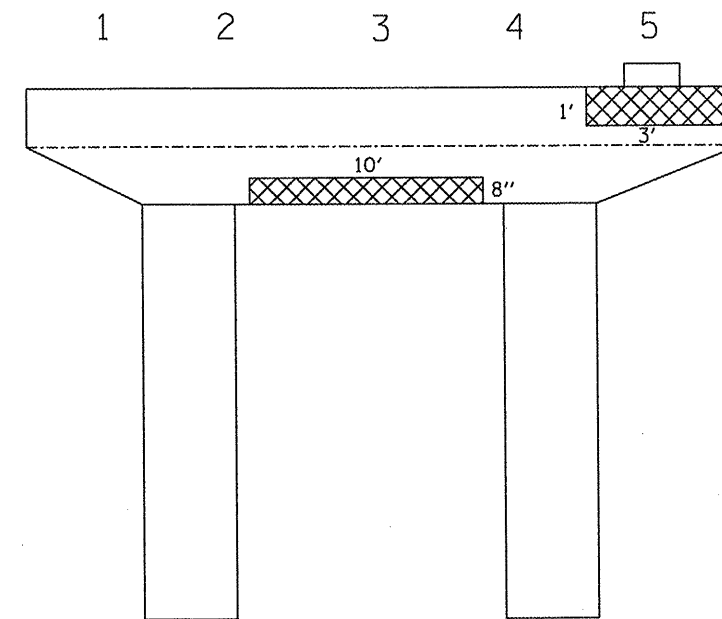
PIER 31 EAST FACE



PIER 32 WEST FACE



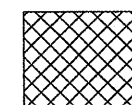
PIER 32 EAST FACE



PIER 33 WEST FACE

SN 016-2451 TOTAL BILL OF MATERIAL

DESCRIPTION	UNIT	QUANTITY
STRUCTURAL REPAIR OF CONCRETE $\leq$ 5"	SQ FT	134



STRUCTURAL REPAIR OF CONCRETE  $\leq$  5"

FILE NAME =	USER NAME = estmablek	DESIGNED -	REVISED -	<b>STATE OF ILLINOIS DEPARTMENT OF TRANSPORTATION</b>	<b>LOCATION 6</b>			F.A.P. RTE. VAR.	SECTION	COUNTY	TOTAL SHEETS	SHEET NO.
cd:\pw\work\PIWIDOT\ESTIMABLEK\d0161538\0	01309-shr-plan.dgn	DRAWN -	REVISED -		SN 016-2451: I-94 NB RAMP TO I-290 EB OVER I-290 EB RAMP TO I-94 NB			2009-069 BR	COOK	39	27	
	PLOT SCALE = 100.0000' / IN.	CHECKED -	REVISED -		SCALE:	SHEET NO. 1 OF 1 SHEETS	STA.	TO STA.	CONTRACT NO. 60H77			
	PLOT DATE = 1/5/2010	DATE -	REVISED -		ILLINOIS FED. AID PROJECT							