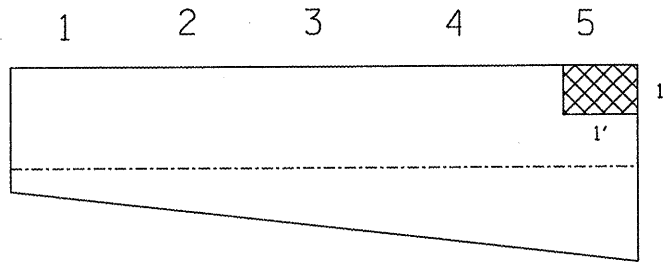
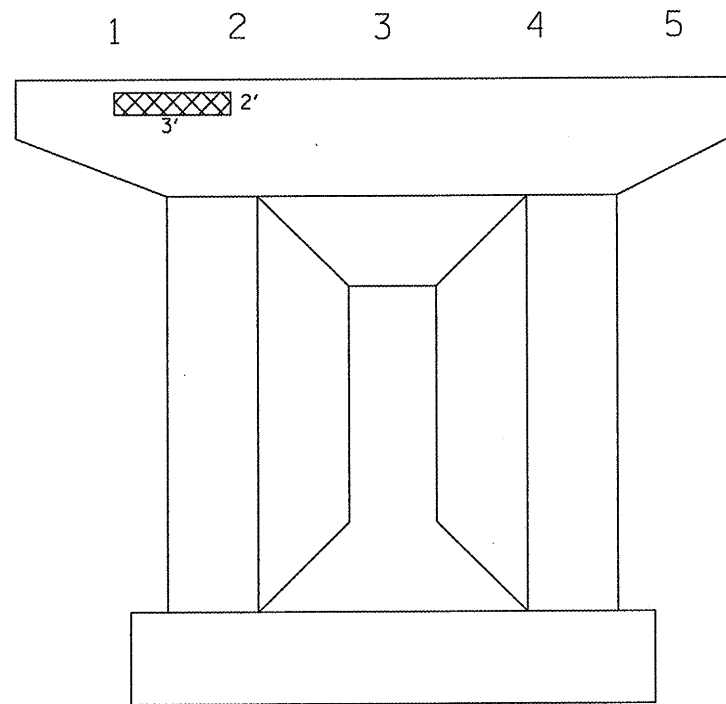


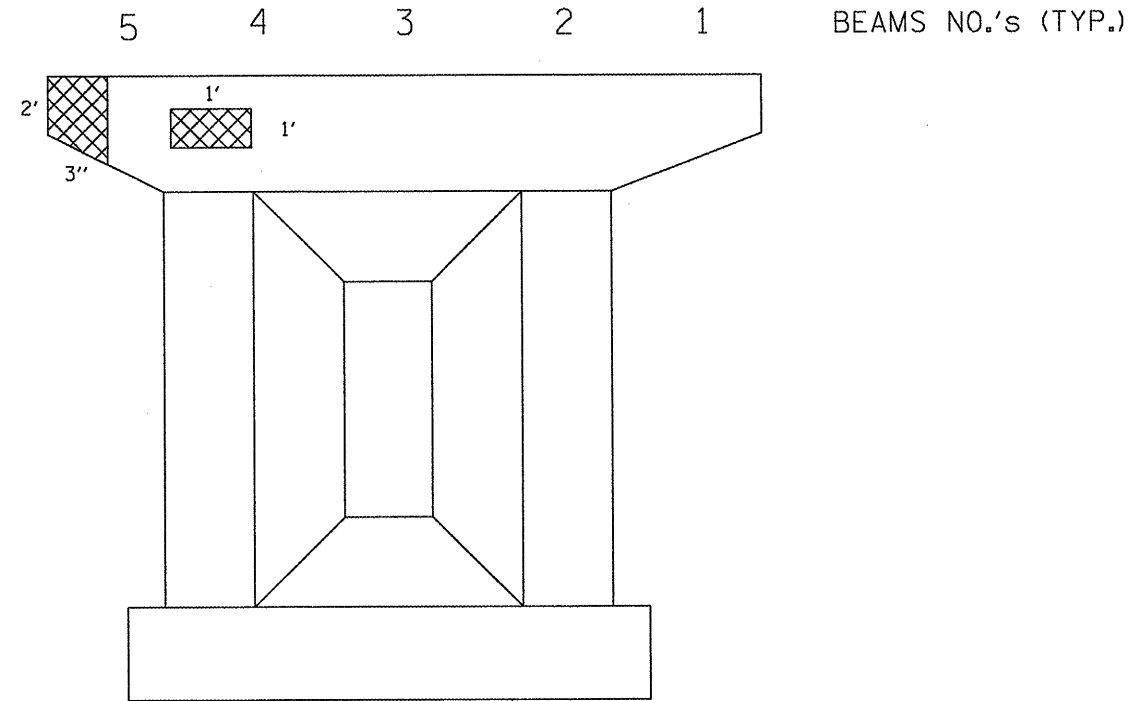
016-2453: I-290 EB RAMP TO I-90, 94 NB/I-90, 94
 LOCATION: .5 M E. RACINE AVE



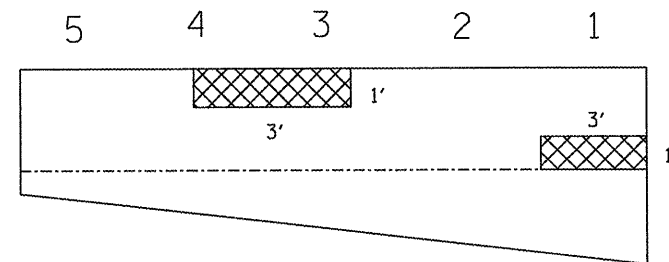
WEST ABUTMENT #20



PIER 21 EAST FACE



PIER 21 WEST FACE

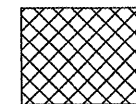


NORTH ABUTMENT #29

BEAMS NO.'s (TYP.)

SN 016-2453 TOTAL BILL OF MATERIAL

DESCRIPTION	UNIT	QUANTITY
STRUCTURAL REPAIR OF CONCRETE \leq 5"	SQ FT	196



STRUCTURAL REPAIR OF CONCRETE \leq 5"

FILE NAME =	USER NAME = estimblek	DESIGNED -	REVISED -	STATE OF ILLINOIS DEPARTMENT OF TRANSPORTATION	LOCATION 8 SN 016-2453: I-290 EB RAMP TO I-90, 94 NB/I-90, 94	F.A.P. RTE.	SECTION	COUNTY	TOTAL SHEETS	SHEET NO.	
ct:\pwwork\VPWIDOT\ESTIMBLEK\d0161538\0	81309-sht-plan.dgn	DRAWN -	REVISED -			VAR.	2009-069 BR	COOK	39	35	
PLOT SCALE = 100.0000' / IN.	CHECKED -	REVISED -	REVISED -			CONTRACT NO. 60H77		ILLINOIS FED. AID PROJECT			
PLOT DATE = 1/5/2010	DATE -	REVISED -	REVISED -			SCALE:	SHEET NO. 1 OF 3 SHEETS	STA.	TO STA.		