

STATE OF ILLINOIS
DEPARTMENT OF TRANSPORTATION
DIVISION OF HIGHWAYS

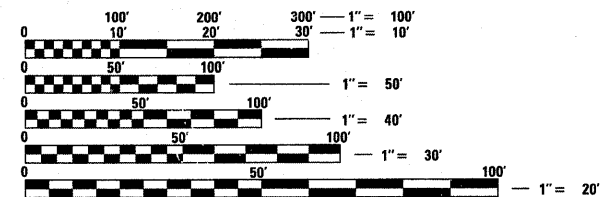
**PROPOSED
HIGHWAY PLANS**

F.A.P. 307: IL. ROUTE 64
IL. RTE. 47 TO CAMPTON HILLS RD.
SECTION: 126 RS-5

**RESURFACING (3P)
KANE COUNTY
C-91-840-09**

FOR INDEX OF SHEETS, SEE SHEET NO. 2

THE PROJECT IS LOCATED IN THE
CITY OF ST. CHARLES

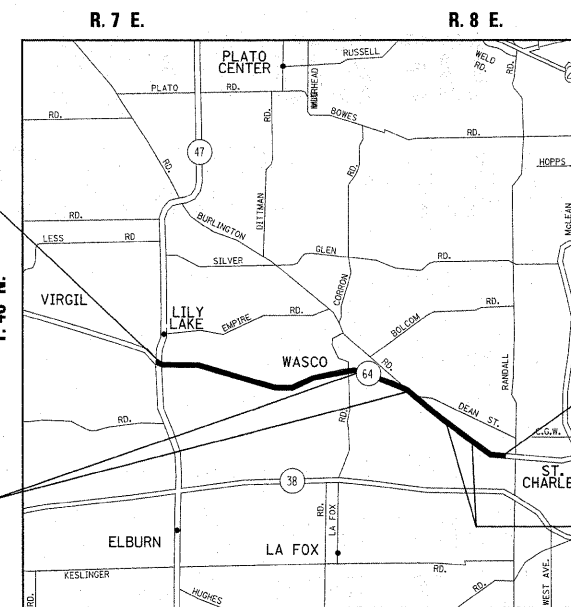


FULL SIZE PLANS HAVE BEEN PREPARED USING STANDARD ENGINEERING SCALES. REDUCED SIZED PLANS WILL NOT CONFORM TO STANDARD SCALES. IN MAKING MEASUREMENTS ON REDUCED PLANS, THE ABOVE SCALES MAY BE USED.

J.U.L.I.E.
JOINT UTILITY LOCATION INFORMATION FOR EXCAVATION
1-800-892-0123
OR 811

PROJECT ENGINEER: DANIEL WILGREEN (847) 705-1240
PROJECT MANAGER: KEN ENG

CONTRACT NO. 60I00



PROJECT BEGINS
STA. 620 + 97

OMISSION
STA. 834 + 62
TO STA. 846 + 33

PROJECT ENDS
STA. 1017 + 39

OMISSION
STA. 991 + 31 TO
STA. 1009 + 60

GROSS LENGTH = 39,642 FT. = (7.51 MILES)
NET LENGTH = 36,642 FT. = (6.94 MILES)

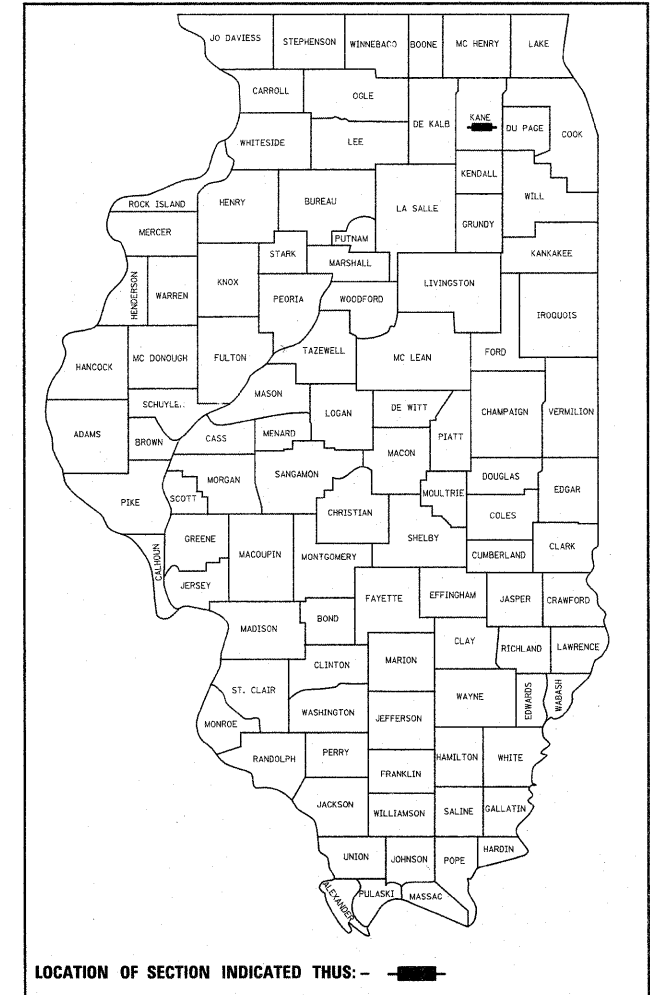


AVERAGE DAILY TRAFFIC
IL. 64 2007 ADT = 16,400

POSTED SPEED LIMIT
IL. 64: 35,45-50,55 MPH

F.A.P. RTE.	SECTION	COUNTY	TOTAL SHEETS	SHEET NO.
307	126 RS-5	KANE	34	1
		ILLINOIS	CONTRACT NO. 60I00	

D-91-840-09



LOCATION OF SECTION INDICATED THIS: - [black rectangle]

STATE OF ILLINOIS
DEPARTMENT OF TRANSPORTATION
DIVISION OF HIGHWAYS

SUBMITTED DECEMBER 7, 2009

Diane M. O'Keefe
DEPUTY DIRECTOR OF HIGHWAYS, REGION ENGINEER

January 09 2010
Scott E. Stitt P.E.
ACTING ENGINEER OF DESIGN AND ENVIRONMENT

January 09 2010
Christine M. Fead
DIRECTOR OF HIGHWAYS, CHIEF ENGINEER

**PRINTED BY THE AUTHORITY
OF THE STATE OF ILLINOIS**