

EXIST. CURVE E\_JOLT-1  
 PI STA. = 7+77.17  
 $\Delta = 4^{\circ} 06' 49''$  (LT)  
 $D = 0^{\circ} 45' 50''$   
 $R = 7,500.00'$   
 $T = 269.36'$   
 $L = 538.48'$   
 $E = 4.84'$   
 $e =$  -----  
 T.R. = -----  
 S.E. RUN = -----  
 P.C. STA. = 5+07.81  
 P.T. STA. = 10+46.30

EXIST. CURVE E\_JOLT-2  
 PI STA. = 26+04.38  
 $\Delta = 15^{\circ} 26' 20''$  (RT)  
 $D = 6^{\circ} 21' 58''$   
 $R = 900.00'$   
 $T = 121.99'$   
 $L = 242.51'$   
 $E = 8.23'$   
 $e =$  -----  
 T.R. = -----  
 S.E. RUN = -----  
 P.C. STA. = 24+82.39  
 P.T. STA. = 27+24.90

IMPROVEMENT BEGINS  
 STA. 2+87.2

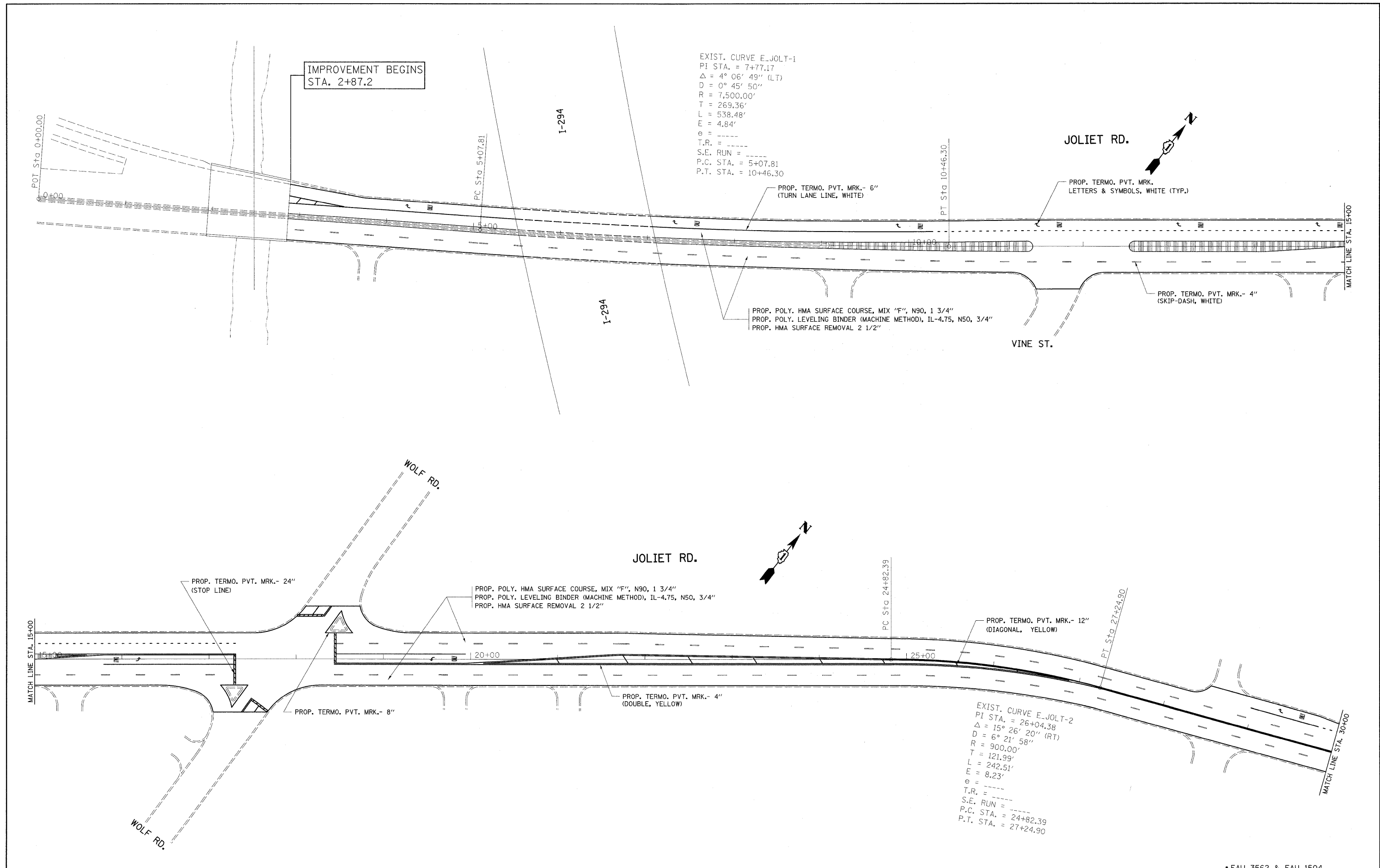
JOLIET RD.

JOLIET RD.

VINE ST.

WOLF RD.

WOLF RD.



•FAU 3562 & FAU 1504

FILE NAME =  
 c:\pwwork\pwwid\ABEBAWA\d0157545\103710-shit-plan.dgn

USER NAME = abebawa  
 110-shit-plan.dgn  
 PLOT SCALE = 50.0000' / IN.  
 PLOT DATE = 11/25/2009

DESIGNED -  
 DRAWN -  
 CHECKED -  
 DATE -

REVISED -  
 REVISED -  
 REVISED -  
 REVISED -

STATE OF ILLINOIS  
 DEPARTMENT OF TRANSPORTATION

JOLIET RD (I-294 TO IL 43 (HARLEM AVE.))  
 ROADWAY PLAN

SCALE: SHEET NO. OF SHEETS STA. TO STA.

F.A.U. RTE.	SECTION	COUNTY	TOTAL SHEETS	SHEET NO.
*	2009-131 RS	COOK	51	8
CONTRACT NO. 60142				

ILLINOIS FED. AID PROJECT