

STATE OF ILLINOIS
DEPARTMENT OF TRANSPORTATION
DIVISION OF HIGHWAYS

**PROPOSED
HIGHWAY PLANS**

ROUTE: VARIOUS LOCATIONS
SECTION: 2009-092 GRR
VARIOUS LOCATIONS IN EASTERN WILL COUNTY
GUARDRAIL REPLACEMENTS
PROJECT: ACHSIP-000S(699)
WILL COUNTY
C-91-040-10

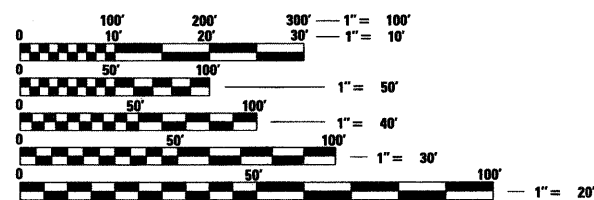
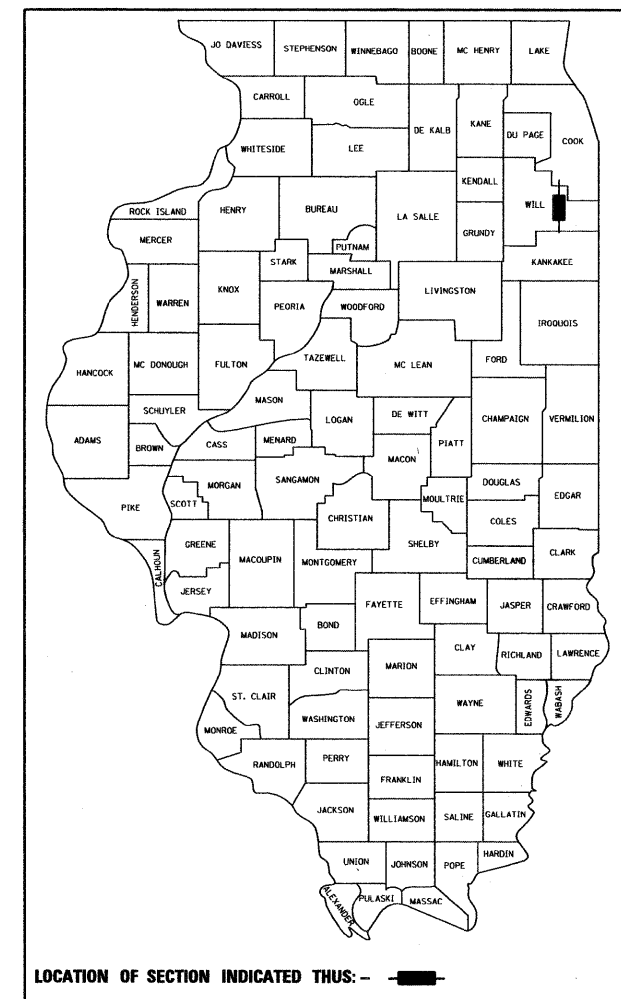
FOR INDEX OF SHEETS, SEE SHEET NO. 2

THE PROJECT IS LOCATED IN THE
VILLAGES OF BEECHER, CRETE,
MONEE AND UNIVERSITY PARK

F.A. RTE.	SECTION	COUNTY	TOTAL SHEETS	SHEET NO.
*	2009-092 GRR	WILL	18	1
		ILLINOIS	CONTRACT NO. 60145	

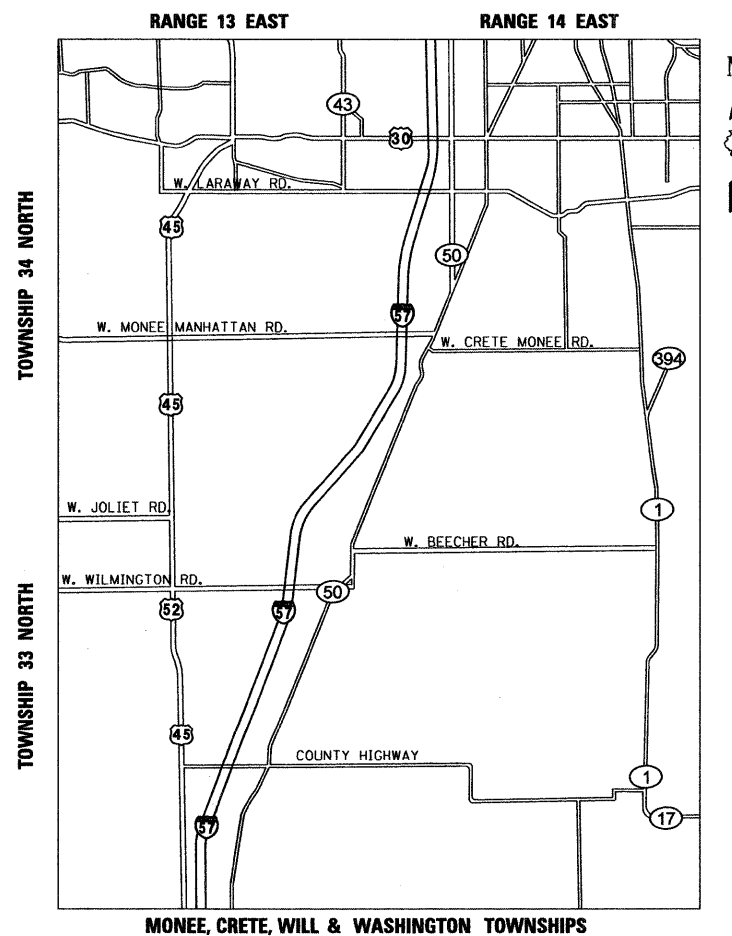
* VARIOUS * 18 + 2 = 20

D-91-040-10



FULL SIZE PLANS HAVE BEEN PREPARED USING STANDARD ENGINEERING SCALES. REDUCED SIZED PLANS WILL NOT CONFORM TO STANDARD SCALES. IN MAKING MEASUREMENTS ON REDUCED PLANS, THE ABOVE SCALES MAY BE USED.

J.U.L.I.E.
JOINT UTILITY LOCATION INFORMATION FOR EXCAVATION
1-800-892-0123
OR 811



MONEE, CRETE, WILL & WASHINGTON TOWNSHIPS

Peter M. Johnston
12-15-09
PETER M. JOHNSTON
062-047647
REGISTERED
PROFESSIONAL
ENGINEER
OF
ILLINOIS
Exp.
11-30-11

PROJECT ENGINEER: PETER JOHNSTON (GRAEF) 773-399-0112
PROJECT MANAGER: KEN ENG (IDOT) 847-705-4247

CONTRACT NO. 60145

GRAEF 8501 W. Higgins Road, Suite 280
Chicago, Illinois 60631
(773) 399-0112

STATE OF ILLINOIS
DEPARTMENT OF TRANSPORTATION
DIVISION OF HIGHWAYS

SUBMITTED DECEMBER 15 2009

Diana M. O'Keefe
DEPUTY DIRECTOR OF HIGHWAYS, REGION ENGINEER

January 29, 2010
Scott E. Stitt P.E.
ENGINEER OF DESIGN AND ENVIRONMENT

January 29, 2010
Christine M. Reed
DIRECTOR OF HIGHWAYS, CHIEF ENGINEER

**PRINTED BY THE AUTHORITY
OF THE STATE OF ILLINOIS**