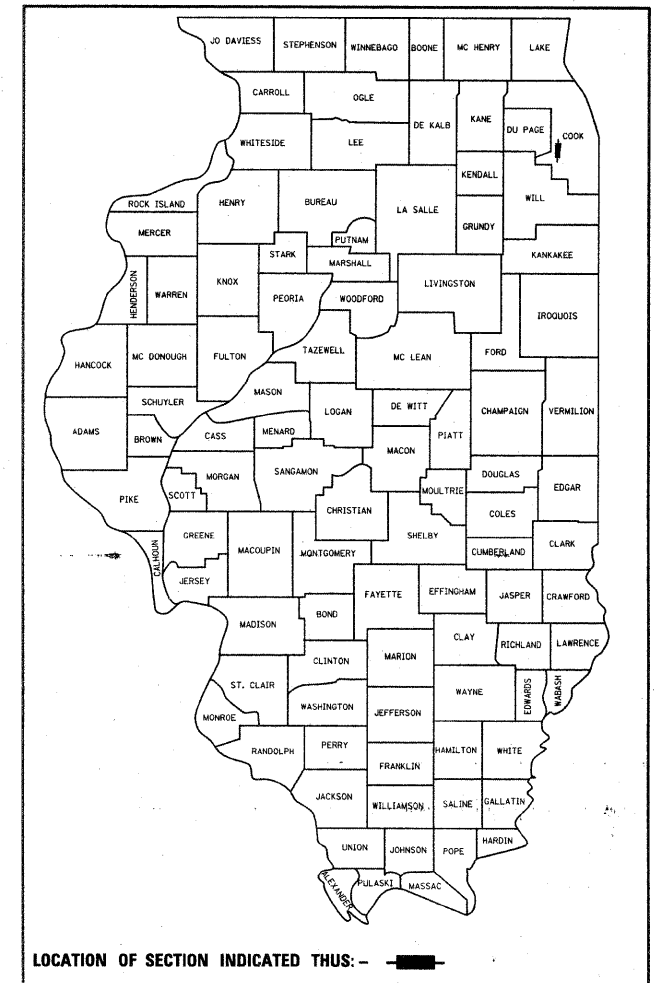


STATE OF ILLINOIS
DEPARTMENT OF TRANSPORTATION
DIVISION OF HIGHWAYS

F.A.I. RTE.	SECTION	COUNTY	TOTAL SHEETS	SHEET NO.
55	99 (1&2) RS-11	WILL	45	1
		ILLINOIS	CONTRACT NO. 60153	

* + 13
58

D-91-060-10



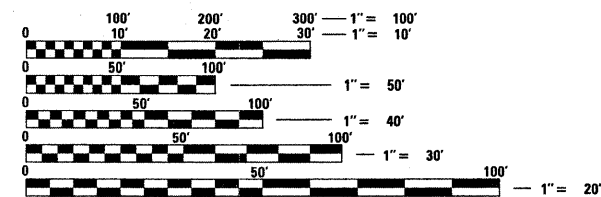
LOCATION OF SECTION INDICATED THUS: -

PROPOSED HIGHWAY PLANS

F.A.I. ROUTE 55 (INTERSTATE 55)
GRUNDY COUNTY LINE TO KANKAKEE RIVER
SECTION: 99 (1&2) RS-11
RESURFACING (3P)
WILL COUNTY
C-91-060-10

FOR INDEX OF SHEETS, SEE SHEET NO. 2

THIS PROJECT IS LOCATED IN THE VILLAGE OF DIAMOND AND THE VILLAGE OF BRAIDWOOD

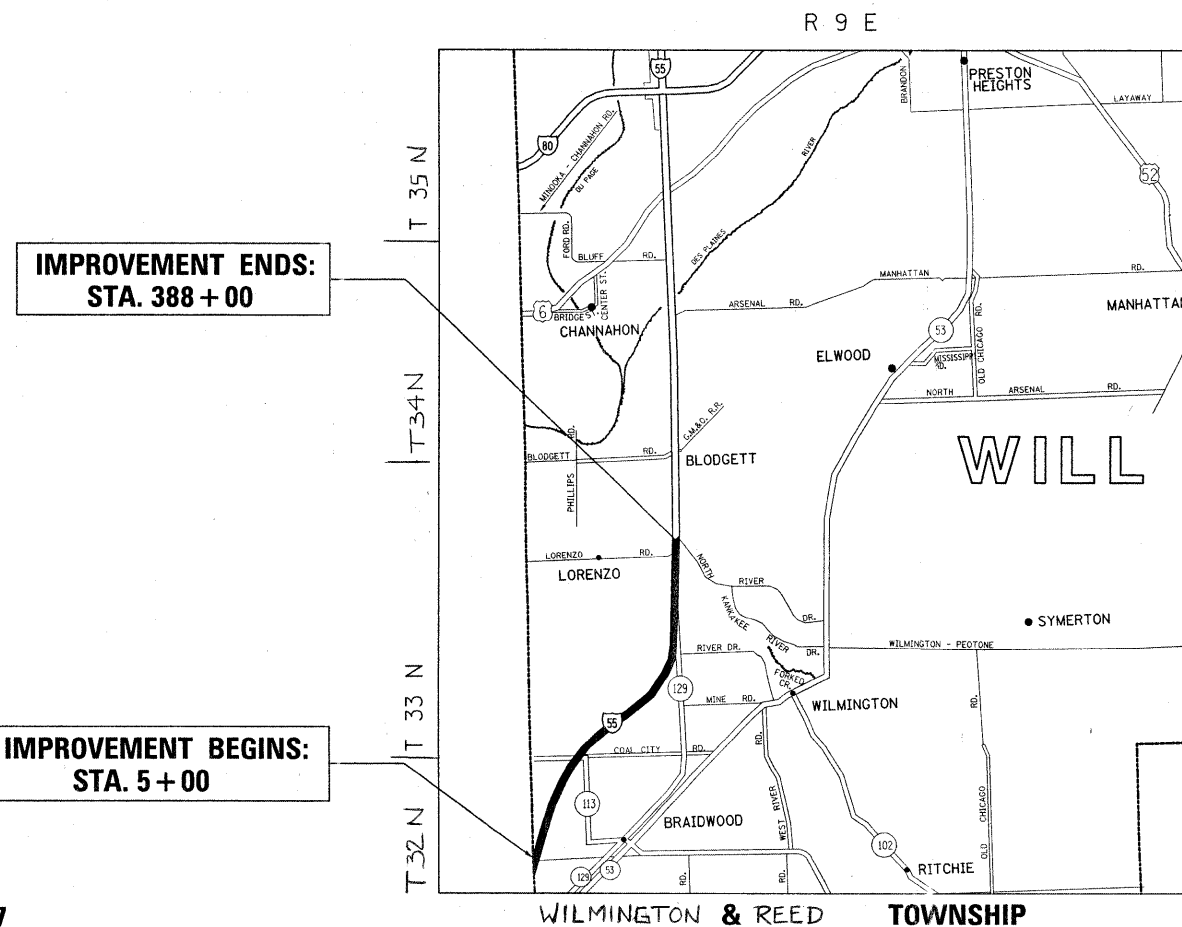


FULL SIZE PLANS HAVE BEEN PREPARED USING STANDARD ENGINEERING SCALES. REDUCED SIZED PLANS WILL NOT CONFORM TO STANDARD SCALES. IN MAKING MEASUREMENTS ON REDUCED PLANS, THE ABOVE SCALES MAY BE USED.

J.U.L.I.E.
JOINT UTILITY LOCATION INFORMATION FOR EXCAVATION
1-800-892-0123
OR 811

PROJECT ENGINEER KARI SMITH (847) 705-4437
PROJECT MANAGER KEN ENG

CONTRACT NO. 60153



IMPROVEMENT ENDS:
STA. 388 + 00

IMPROVEMENT BEGINS:
STA. 5 + 00



TRAFFIC DATA:
2006 ADT= 91000
POSTED SPEED
LIMIT= 65 MPH

GROSS AND NET LENGTH OF IMPROVEMENT = 38300 LINEAL FEET = 7.25 MILES

STATE OF ILLINOIS
DEPARTMENT OF TRANSPORTATION
DIVISION OF HIGHWAYS

SUBMITTED DECEMBER 21, 2009

Diana M. O'Keefe
DEPUTY DIRECTOR OF HIGHWAYS, REGION ENGINEER

January 29, 2010
Scott E. Stutz, P.E.
Acting ENGINEER OF DESIGN AND ENVIRONMENT

January 29, 2010
Christine M. Reed
DIRECTOR OF HIGHWAYS, CHIEF ENGINEER

PRINTED BY THE AUTHORITY
OF THE STATE OF ILLINOIS