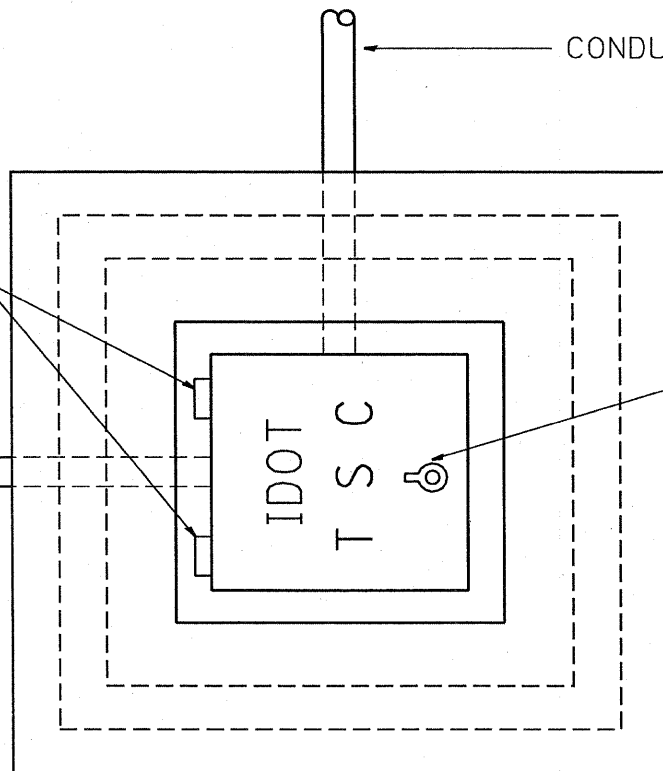


TYPE "T" HINGES REQUIRED ONLY ON  
ON HEAVY DUTY SPECIAL.

CONDUIT TYP.

CONDUIT TYP.

TYPE "G" HANDLE FOR BOTH HDHH AND HDHH SPECIAL



PLAN

HEAVY DUTY HANDHOLE MINIMUM DIMENSIONS (UNHINGED)

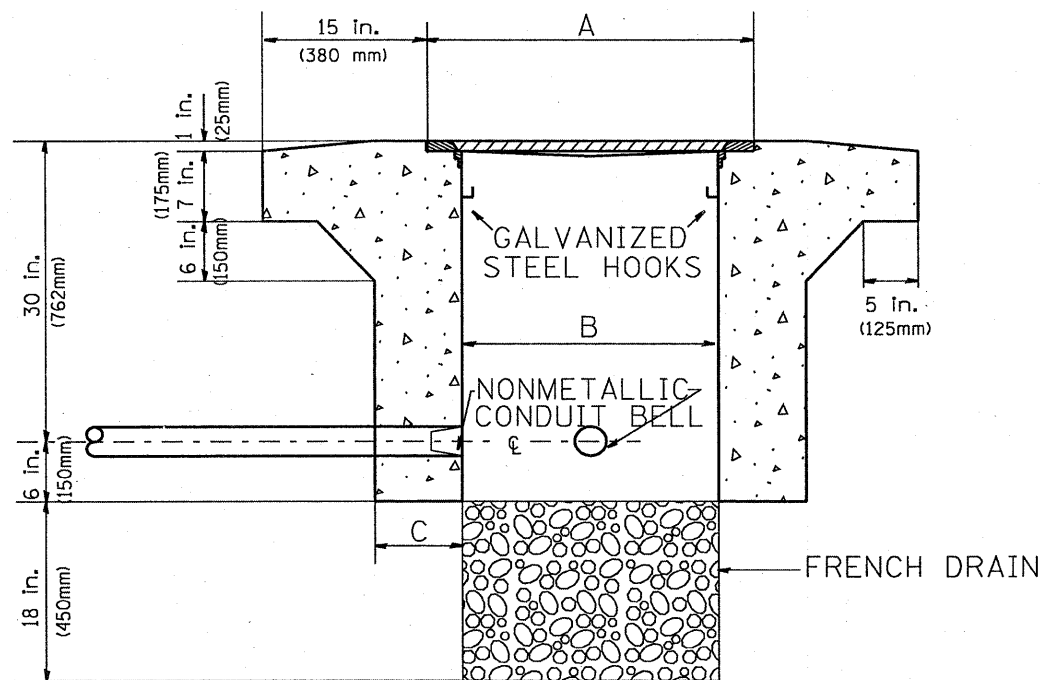
A	28" (711 mm)
B	22" (559 mm)
C	8" (200 mm)

(FRAME AND COVER 260 LBS. (118 Kg.) MIN.)

HEAVY DUTY HANDHOLE SPECIAL MINIMUM DIMENSIONS

A	31.5" (800 mm)
B	30" (762 mm)
C	10" (250 mm)

(FRAME AND COVER 405 LBS. (184 Kg. (405))



ELEVATION

PC CONCRETE - HEAVY DUTY HAND HOLE

FILE NAME =  
C:\d106010\155TSC.TYP.dgn

USER NAME = mezeg  
DESIGNED - R.L.  
DRAWN - G.M.  
CHECKED - R.L.  
DATE - 09/11/96

REVISED - 04/97  
REVISED -  
REVISED -  
REVISED -

STATE OF ILLINOIS  
DEPARTMENT OF TRANSPORTATION  
TRAFFIC SYSTEMS CENTER

PC CONCRETE - HEAVY DUTY  
HAND HOLE

SCALE: NONE SHEET NO. OF SHEETS STA. TO STA.

F.A.I. RTE. SECTION COUNTY TOTAL SHEETS SHEET NO.  
55 99(1+2) 25-11 Will 45 37B  
CONTRACT NO. 60IS3  
FED. ROAD DIST. NO. ILLINOIS FED. AID PROJECT

Added Sheet 2-10-10

TRAFFIC SYSTEMS CENTER (TY-1TSC-400#15)