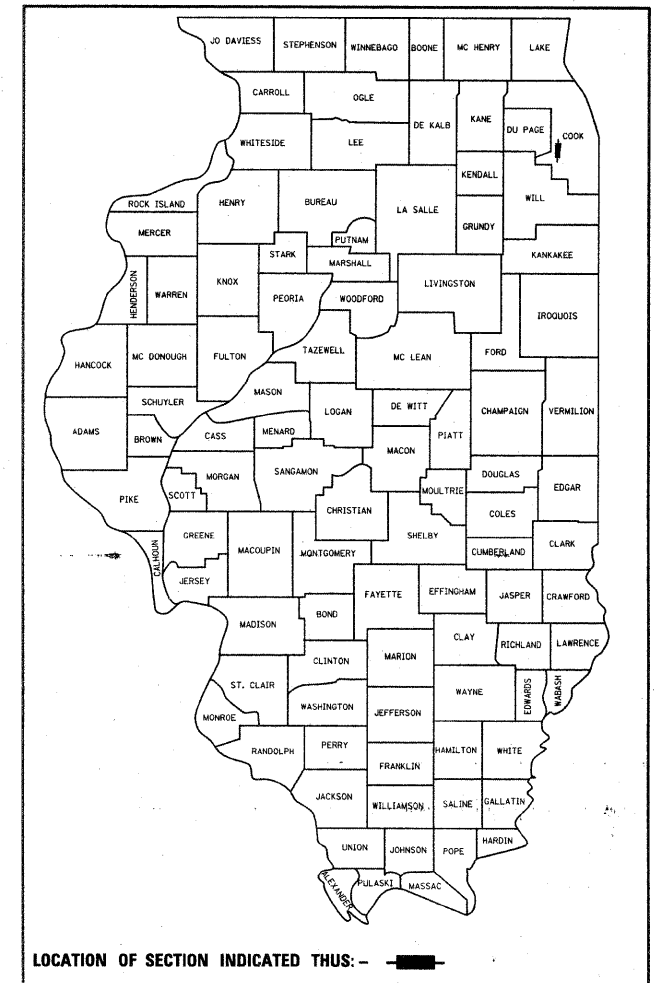


STATE OF ILLINOIS
DEPARTMENT OF TRANSPORTATION
DIVISION OF HIGHWAYS

| F.A.I. RTE. | SECTION | COUNTY | TOTAL SHEETS | SHEET NO. |
|-------------|----------------|----------|--------------------|-----------|
| 55 | 99 (1&2) RS-11 | WILL | 45 | 1 |
| | | ILLINOIS | CONTRACT NO. 60153 | |

* + 13
58

D-91-060-10



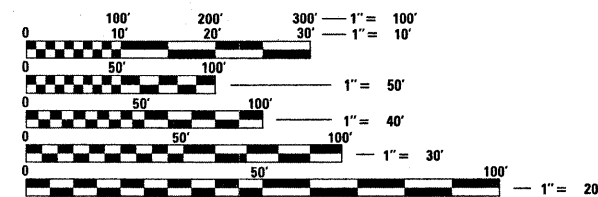
LOCATION OF SECTION INDICATED THUS: - [shaded area] -

PROPOSED HIGHWAY PLANS

F.A.I. ROUTE 55 (INTERSTATE 55)
GRUNDY COUNTY LINE TO KANKAKEE RIVER
SECTION: 99 (1&2) RS-11
RESURFACING (3P)
WILL COUNTY
C-91-060-10

FOR INDEX OF SHEETS, SEE SHEET NO. 2

THIS PROJECT IS LOCATED IN THE VILLAGE OF DIAMOND AND THE VILLAGE OF BRAIDWOOD

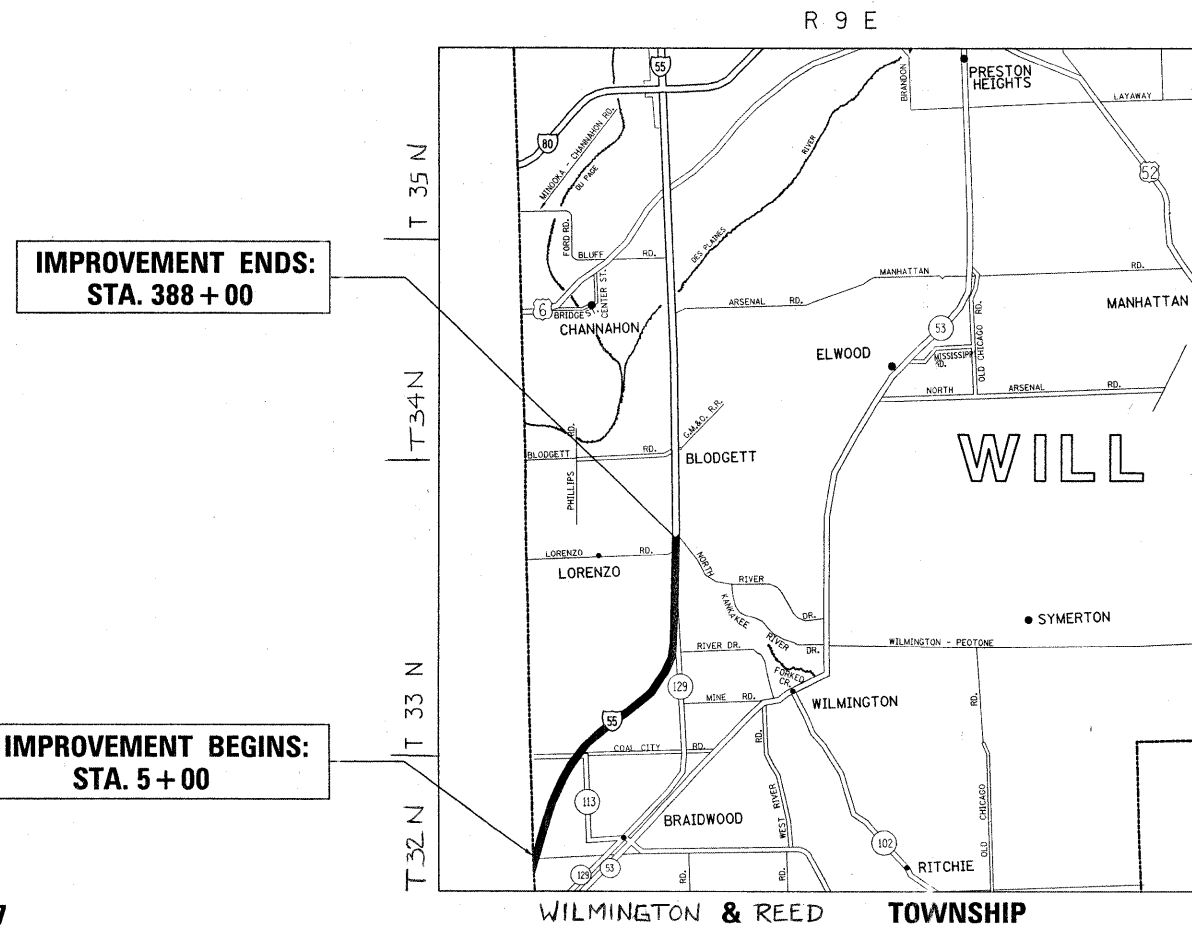


FULL SIZE PLANS HAVE BEEN PREPARED USING STANDARD ENGINEERING SCALES. REDUCED SIZED PLANS WILL NOT CONFORM TO STANDARD SCALES. IN MAKING MEASUREMENTS ON REDUCED PLANS, THE ABOVE SCALES MAY BE USED.

J.U.L.I.E.
JOINT UTILITY LOCATION INFORMATION FOR EXCAVATION
1-800-892-0123
OR 811

PROJECT ENGINEER KARI SMITH (847) 705-4437
PROJECT MANAGER KEN ENG

CONTRACT NO. 60153



IMPROVEMENT ENDS:
STA. 388 + 00

IMPROVEMENT BEGINS:
STA. 5 + 00



TRAFFIC DATA:
2006 ADT= 91000
POSTED SPEED
LIMIT= 65 MPH

STATE OF ILLINOIS
DEPARTMENT OF TRANSPORTATION
DIVISION OF HIGHWAYS

SUBMITTED DECEMBER 21, 2009

Diana M. O'Keefe
DEPUTY DIRECTOR OF HIGHWAYS, REGION ENGINEER

January 29, 2010
Scott E. Stutz, P.E.
Acting ENGINEER OF DESIGN AND ENVIRONMENT

January 29, 2010
Christine M. Reed
DIRECTOR OF HIGHWAYS, CHIEF ENGINEER

PRINTED BY THE AUTHORITY
OF THE STATE OF ILLINOIS

GROSS AND NET LENGTH OF IMPROVEMENT = 38300 LINEAL FEET = 7.25 MILES

INDEX OF SHEETS

STATE STANDARDS

GENERAL NOTES

SHEET NO. DESCRIPTION

STANDARD NO. DESCRIPTION

BEFORE STARTING ANY EXCAVATION, THE CONTRACTOR SHALL CALL "JULIE" AT (800) 892-0123 OR 811 FOR FIELD LOCATIONS OF BURIED ELECTRIC, TELEPHONE, AND GAS FACILITIES. (48 HOUR NOTIFICATION REQUIRED)

THE CONTRACTOR SHALL COORDINATE CONSTRUCTION ACTIVITIES WITH UTILITY COMPANIES AND THE VILLAGES OF DIAMOND AND BRAIDWOOD.

THE CONTRACTOR WILL NOT BE ABLE TO SET UP A YARD OR FIELD OFFICE ON THE STATE PROPERTY WITHOUT THE WRITTEN PERMISSION OF THE DEPARTMENT.

BUTT JOINTS WILL BE INSTALLED AT THE ENDS OF RESURFACING (WHERE RESURFACING MEETS EXISTING PAVEMENT) IN ACCORDANCE WITH THE "BUTT JOINT AND HMA TAPER DETAILS" SHEET INCLUDED IN THE PLANS UNLESS OTHERWISE SPECIFIED.

THE RESIDENT ENGINEER SHALL CONTACT MS. CORA MATHIS, AREA TRAFFIC FIELD ENGINEER, AT (847) 715-8428 A MINIMUM OF TWO WEEKS PRIOR TO PLACEMENT OF FINAL PAVEMENT MARKINGS.

WHEN MILLED PAVEMENT IS OPEN TO TRAFFIC, THE MAXIMUM GRADE DIFFERENTIAL BETWEEN PASSES OF THE MILLING MACHINE SHALL NOT EXCEED 1 1/2 INCHES WHERE THE SPEED LIMIT IS 45 MPH OR LESS, AND 1 INCH WHERE THE SPEED LIMIT IS 45 MPH. WITH WRITTEN APPROVAL FROM THE RESIDENT ENGINEER, A MAXIMUM GRADE DIFFERENTIAL OF 3 INCHES MAY BE ALLOWED IF THE EDGE OF THE MILLING IS SLOPED A MINIMUM OF 1:3 (V:H).

THE CONTRACTOR SHALL CONTACT THE DISTRICT ONE TRAFFIC CONTROL SUPERVISOR AT (847) 705-4151. A MINIMUM OF 72 HOURS IN ADVANCE OF BEGINNING WORK.

ALL DAMAGE TO EXISTING PAVEMENT MARKINGS OR RAISED REFLECTIVE PAVEMENT OUTSIDE THE REMOVAL LINE SHOWN ON THE PLANS SHALL BE REPLACED AT NO ADDITIONAL COST TO THE DEPARTMENT.

BEFORE BEGINNING ANY WORK, THE CONTRACTOR SHALL RETAIN AND RECORD FOR FUTURE REFERENCE, ALL EXISTING PAVEMENT MARKING LINES (AND RAISED REFLECTIVE PAVEMENT MARKERS) IN ORDER THAT THESE LOCATIONS CAN BE RE-ESTABLISHED FOR STRIPING, EXACT LOCATIONS OF ALL PAVEMENT MARKINGS SHALL BE AS DIRECTED BY THE ENGINEER.

DRAINAGE ADJUSTMENT OR RECONSTRUCTION LOCATIONS WILL BE DETERMINED IN THE FIELD BY THE ENGINEER.

IT SHALL BE THE CONTRACTOR'S RESPONSIBILITY TO VERIFY ALL DIMENSIONS AND CONDITIONS EXISTING IN THE FIELD PRIOR TO CONSTRUCTION AND ORDERING OF MATERIALS.

ALL PAVEMENT PATCHING LOCATIONS WILL BE DETERMINED IN THE FIELD BY THE ENGINEER

DOUBLE LANE MARKERS ARE TO BE USED AS SHOWN ON THE DISTRICT ONE DETAIL "TYPICAL APPLICATIONS-RAISED REFLECTIVE PAVEMENT MARKERS (SNOW-PLOW RESISTANT)" SHOWN IN THE PLANS.

| | |
|---------|-----------------------------------------------------------------------------------------|
| 1 | TITLE SHEET |
| 2 | INDEX OF SHEETS, STATE STANDARDS & GENERAL NOTES. |
| 3 | SUMMARY OF QUANTITIES |
| 4 | EXISTING TYPICAL SECTIONS |
| 5 | PROPOSED TYPICAL SECTIONS |
| 6 | EXIST. AND PROP. TYPICAL SECTIONS FOR RAMPS |
| 7-9 | SEQUENCE OF OPERATIONS |
| 9A-9D | MAINTENANCE OF TRAFFIC (STR. NO. 099-2000) |
| 10-31 | ROADWAY AND PAVEMENT MARKING PLANS |
| 32-34 | CONCRETE HEADWALL RECONSTRUCTION |
| 34A-34I | LOOP INSTALLATION PLAN |
| 35 | PAVEMENT PATCHING FOR HMA SURFACED PAVEMENT (BD-22) |
| 36 | BUTT JOINT AND HMA TAPER DETAILS (BD-32) |
| 37 | FREEWAY ENTRANCE AND EXIST RAMP CLOSURE DETAILS (TC-08) |
| 38 | TRAFFIC CONTROL DETAILS FOR FREEWAY SINGLE AND MULTI-LANE WEAVE (TC-09) |
| 39 | TYPICAL APPLICATIONS: RAISED REFLECTIVE PAVEMENT (TC-11) MARKERS (SNOW-PLOW RESISTANT) |
| 40-41 | MULTI-LANE FREEWAY PAVEMENT MARKING DETAIL (TC-12) |
| 42 | DISTRICT ONE TYPICAL PAVEMENT MARKINGS (TC-13) |
| 43 | PAVEMENT MARKING LETTERS AND SYMBOLS FOR TRAFFIC STAGING (TC-16) |
| 44 | TRAFFIC CONTROL DETAILS FOR FREEWAY SHOULDER CLOSURES AND PARTIAL RAMP CLOSURES (TC-17) |
| 45 | ARTERIAL ROAD INFORMATION SIGN (TC-22) |

| | |
|-----------|--------------------------------------------------------------------------------|
| 420001-07 | PAVEMENT JOINTS |
| | CLASS C AND D PATCHES |
| 642001-01 | SHOULDER RUMBLE STRIPS |
| 482011-03 | HMA SHLD. STRIPS/SHLDS. WITH RESURFACING OR WIDENING AND RESURFACING PROJECTS |
| 701400-04 | APPROACH TO LANE CLOSURE, FREEWAY/EXPRESSWAY |
| 701401-05 | LANE CLOSURE, FREEWAY/EXPRESSWAY |
| 701411-06 | LANE CLOSURE, MULTILANE, AT ENTRANCE OR EXIT RAMP, FOR SPEEDS > 45 MPH |
| 701426-03 | LANE CLOSURE, MULTILANE, INTERMITTENT OR MOVING OPERATION, FOR SPEEDS > 45 MPH |
| 701446-01 | TWO LANE CLOSURE FREEWAY/EXPRESSWAY |
| 701901-01 | TRAFFIC CONTROL DEVICES |

| | | | | | | | | | | | | | |
|----------------------------------------------|---------------------|------------|-----------|-----------------------------------------------------------|---------------------------------------------------------------|----------------|------|--------|-------------|---------|--------|---------------------------|-----------|
| FILE NAME = | USER NAME = abebawe | DESIGNED - | REVISED - | STATE OF ILLINOIS DEPARTMENT OF TRANSPORTATION | INDEX OF SHEETS, STATE STANDARDS AND GENERAL NOTES | | | | F.A.I. RTE. | SECTION | COUNTY | TOTAL SHEETS | SHEET NO. |
| cd:\pwork\PW\DDT\ABEBAWA\0169692\shdplan.dgn | | DRAWN - | REVISED - | | 55 | 99 (1&2) RS-11 | WILL | 45 | 2 | | | | |
| PLOT SCALE = 50.0000' / IN. | | CHECKED - | REVISED - | | CONTRACT NO. 60153 | | | | | | | | |
| PLOT DATE = 2/10/2010 | | DATE - | REVISED - | | SCALE: | SHEET NO. | OF | SHEETS | STA. | TO | STA. | ILLINOIS FED. AID PROJECT | |

2/10/2010

| SUMMARY OF QUANTITIES | | | URBAN 100% STATE | CONSTRUCTION TYPE CODE | | | | SUMMARY OF QUANTITIES | | | URBAN 100% STATE | CONSTRUCTION TYPE CODE | | | |
|-----------------------|---------------------------------------------------------|--------|---------------------|------------------------|--|--|--|-----------------------|-----------------------------------------------------------------------|--------|---------------------|------------------------|--|--|--|
| CODE NO | ITEM | UNIT | TOTAL QUANTITIES | ROADWAY | | | | CODE NO | ITEM | UNIT | TOTAL QUANTITIES | ROADWAY | | | |
| | | | | 1000 | | | | | | | | 1000 | | | |
| 20201006 | GRADING AND SHAPING SHOULDERS | UNIT | 1550 | 1550 | | | | * 78000500 | THERMOPLASTIC PAVEMENT MARKING - LINE 8" | FOOT | 7800 | 7800 | | | |
| 40600200 | BITUMINOUS MATERIALS (PRIME COAT) | TON | 238 | 238 | | | | * 78000600 | THERMOPLASTIC PAVEMENT MARKING - LINE 12" | FOOT | 3478 | 3478 | | | |
| 40600300 | AGGREGATE (PRIME COAT) | TON | 1190 | 1190 | | | | * 78000650 | THERMOPLASTIC PAVEMENT MARKING - LINE 24" | FOOT | 135 | 135 | | | |
| 40600400 | MIXTURE FOR CRACKS, JOINTS, AND FLANGWAYS | TON | 446 | 446 | | | | * 78004220 | PREFORMED PLASTIC PAVEMENT MARKING, TYPE B - INLAID - LINE 5" | FOOT | 17,536 | 17,536 | | | |
| 40600895 | CONSTRUCTING TEST STRIP | EACH | 2 | 2 | | | | * 78100100 | RAISED REFLECTIVE PAVEMENT MARKER | EACH | 1,758 | 1,758 | | | |
| 40600982 | HOT-MIX ASPHALT SURFACE REMOVAL - BUTT JOINT | SQ YD | 787 | 787 | | | | 78300200 | RAISED REFLECTIVE PAVEMENT MARKER REMOVAL | EACH | 1,400 | 1,400 | | | |
| 40601005 | HOT-MIX ASPHALT REPLACEMENT OVER PATCHES | TON | 225 | 225 | | | | X0322729 | MATERIAL TRANSFER DEVICE | TON | 50,988 | 50,988 | | | |
| 40603085 | HOT-MIX ASPHALT BINDER COURSE, IL-19.0, N70 | TON | 9820 | 9820 | | | | X0324685 | TEST STRIP (STONE MATRIX ASPHALT) | EACH | 2 | 2 | | | |
| 40603340 | HOT-MIX ASPHALT SURFACE COURSE, MIX "D", N70 | TON | 7667 | 7667 | | | | X0325305 | STRUCTURAL REPAIR OF CONCRETE (DEPTH EQUAL TO OR LESS THAN 5 INCHES) | SQ FT | 15.8 | 15.8 | | | |
| 44000158 | HOT-MIX ASPHALT SURFACE REMOVAL, 2 1/4" | SQ YD | 21128 | 21128 | | | | X0325702 | NIGHTTIME WORK ZONE LIGHTING | L SUM | 1 | 1 | | | |
| 44000165 | HOT-MIX ASPHALT SURFACE REMOVAL, 4" | SQ YD | 278,731 | 278,731 | | | | X0325775 | WET REFLECTIVE TEMPORARY TAPE, TYPE III, 4 INCH | FOOT | 319200 | 319200 | | | |
| 44002220 | HOT-MIX ASPHALT REMOVAL OVER PATCHES, 5" | SQ YD | 803 | 803 | | | | X0325841 | WET REFLECTIVE TEMPORARY TAPE, TYPE III, 24 INCH | FOOT | 270 | 270 | | | |
| 44201765 | CLASS D PATCHES, TYPE II, 10 INCH | SQ YD | 523 | 523 | | | | X0325876 | WET REFLECTIVE TEMPORARY TAPE, TYPE III, 8 INCH | FOOT | 15600 | 15600 | | | |
| 44201769 | CLASS D PATCHES, TYPE III, 10 INCH | SQ YD | 112 | 112 | | | | X0326107 | WET REFLECTIVE TEMPORARY TAPE, TYPE III, 5 INCH | FOOT | 38300 | 38300 | | | |
| 44201771 | CLASS D PATCHES, TYPE IV, 10 INCH | SQ YD | 27 | 27 | | | | 40603153 | POLYMERIZED HOT-MIX ASPHALT SURFACE COURSE, STONE MATRIX ASPHALT, N80 | TON | 27,868 | 27,868 | | | |
| 48102100 | AGGREGATE WEDGE SHOULDER, TYPE B | TON | 11,089 | 11,089 | | | | X4066685 | POLYMERIZED HOT-MIX ASPHALT BINDER COURSE, STONE MATRIX ASPHALT, N80 | TON | 23,120 | 23,120 | | | |
| 50102400 | CONCRETE REMOVAL | CU YD | 5.2 | 5.2 | | | | 40600826 | POLYMERIZED LEVELING BINDER (MACHINE METHOD), IL-4.75, N50 | TON | 872 | 872 | | | |
| 50200100 | STRUCTURE EXCAVATION | CU YD | 9 | 9 | | | | X7011015 | TRAFFIC CONTROL AND PROTECTION (EXPRESSWAYS) | L SUM | 1 | 1 | | | |
| 50800105 | REINFORCEMENT BARS | POUND | 2000 | 2000 | | | | X7013820 | TRAFFIC CONTROL SURVEILLANCE, EXPRESSWAYS | CAL DA | 50 | 50 | | | |
| 54003000 | CONCRETE BOX CULVERTS | CU YD | 5.2 | 5.2 | | | | 70400100 | TEMPORARY CONCRETE BARRIER | FOOT | 400 | 400 | | | |
| 63301215 | REMOVE AND RE-ERECT STEEL PLATE BEAM GUARD RAIL, TYPE B | FOOT | 82 | 82 | | | | 70400200 | RELOCATE TEMPORARY CONCRETE BARRIER | FOOT | 260 | 260 | | | |
| 64200105 | SHOULDER RUMBLE STRIP | FOOT | 140,293 | 140,293 | | | | 20030270 | IMPACT ATTENUATORS, TEMPORARY (FULLY REDIRECTIVE, WIDE), TEST LEVEL 3 | EACH | 1 | 1 | | | |
| 67000400 | ENGINEER'S FIELD OFFICE, TYPE A | CAL MO | 6 | 6 | | | | 20030330 | IMPACT ATTENUATORS, RELOCATE (FULLY REDIRECTIVE), TEST LEVEL 3 | EACH | 1 | 1 | | | |
| 67100100 | MOBILIZATION | L SUM | 1 | 1 | | | | 70300240 | TEMPORARY PAVEMENT MARKING - LINE 6" | FOOT | 225 | 225 | | | |
| 70106800 | CHANGEABLE MESSAGE SIGN | CAL MO | 20 | 20 | | | | * 78200530 | BARRIER WALL MARKERS, TYPE C | EACH | 32 | 32 | | | |
| 70301000 | WORK ZONE PAVEMENT MARKING REMOVAL | SQ FT | 68754 | 68754 | | | | 20030250 | IMPACT ATTENUATORS, TEMPORARY (NON-REDIRECTIVE), TEST LEVEL 3 | EACH | 2 | 2 | | | |
| * 78000200 | THERMOPLASTIC PAVEMENT MARKING - LINE 4" | FOOT | 140,693 | 140,693 | | | | | | | | | | | |
| * 78000400 | THERMOPLASTIC PAVEMENT MARKING - LINE 6" | FOOT | 763 | 763 | | | | | | | | | | | |
| * 81018500 | CONDUIT PULSED, 2" DIA. GALVANIZED STEEL | FOOT | 625 | 625 | | | | | | | | | | | |
| * 81400200 | HEAVY DUTY HANDHOLE | EACH | 8 | 8 | | | | | | | | | | | |
| * 8850102 | INDUCTION LOOP 2" DIA. | FOOT | 540 | 540 | | | | | | | | | | | |
| * X0326872 | CONDUIT IN TRENCH, HIGH DENSITY POLYETHYLENE, COILABLE | FOOT | 200 | 200 | | | | | | | | | | | |
| * 81900200 | TRENCH AND BACKFILL FOR ELECTRICAL WORK | FOOT | 200 | 200 | | | | | | | | | | | |
| * SPECIALTY ITEMS | | | | | | | | | | | | | | | |

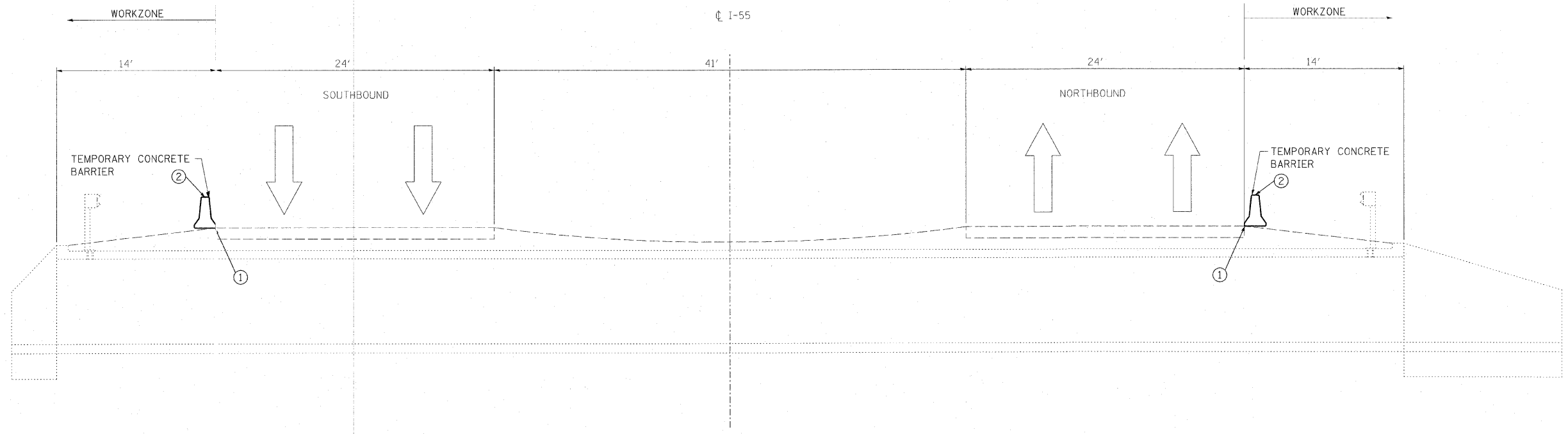
| | | | |
|----------------------------------------------|---------------------|------------|-----------|
| FILE NAME = | USER NAME = abebawa | DESIGNED - | REVISED - |
| 0:\p_wor\k\p\10\abebawa\0169692\stf-plan\dgn | | DRAWN - | REVISED - |
| | | CHECKED - | REVISED - |
| | | DATE - | REVISED - |

STATE OF ILLINOIS
DEPARTMENT OF TRANSPORTATION

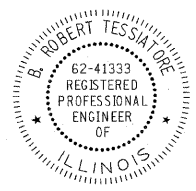
| SUMMARY OF QUANTITIES | | | |
|-----------------------|---------------------|------|---------|
| SCALE: | SHEET NO. OF SHEETS | STA. | TO STA. |

| | | | | |
|-------------------------------------------------|--------------|--------|--------------|--------------------|
| F.A.I. RTE. | SECTION | COUNTY | TOTAL SHEETS | SHEET NO. |
| 55 | (18.2) RS-11 | WILL | 45 | 3 |
| FED. ROAD DIST. NO. 1 ILLINOIS FED. AID PROJECT | | | | CONTRACT NO. 60153 |

Rev. 2-10-10



TYPICAL SECTION THROUGH SHOULDER CLOSURE



B. Robert Tessiatore
 B. ROBERT TESSIATORE

FEBRUARY 8, 2010
 DATE

- ① TEMPORARY PAINT PAVEMENT MARKING LINE, 6" (WHITE) (TO BE PLACED ON LOWER FACE OF WALL WHERE WALL IS ≤ 1' FROM EDGE OF PAVEMENT.)
- ② BARRIER WALL MARKERS, TYPE C

FILE NAME = G:\ENR\06-5529-02_01_Various Structures\CAD\092006\Civil\Sheet\099-2000_Sht.MOT_SECTION.dgn

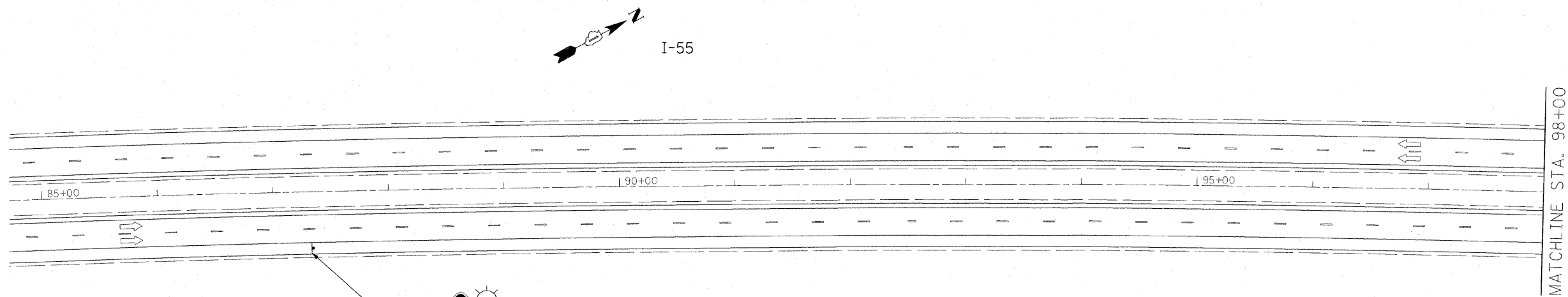


| | | |
|------------------------|-------------------|-----------------|
| USER NAME = \$USER\$ | DESIGNED - KAC | REVISED - _____ |
| PLOT SCALE = \$SCALE\$ | DRAWN - JNH | REVISED - _____ |
| PLOT DATE = 2/8/2010 | CHECKED - KAC | REVISED - _____ |
| | DATE - 02/08/2010 | REVISED - _____ |



STATE OF ILLINOIS
 DEPARTMENT OF TRANSPORTATION

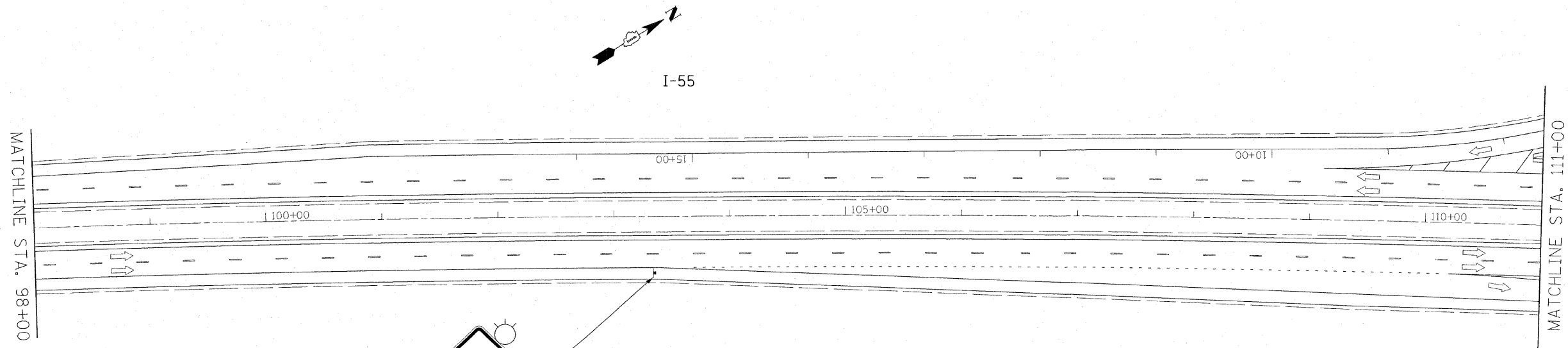
| | |
|---------------------------------------------------------------------------|------------------------------------------|
| MAINTENANCE OF TRAFFIC STRUCTURE NO. 099-2000 REPAIR - TYPICAL SECTION | |
| SCALE: 1" = 5' | SHEET NO. ___ OF ___ SHEETS STA. TO STA. |

| F.A.I. RTE. | SECTION | COUNTY | TOTAL SHEETS | SHEET NO. |
|---------------------------|---------------|--------|--------------|-----------|
| 55 | 99(1+2) RS-11 | WILL | 45 | 9A |
| CONTRACT NO. 60153 | | | | |
| ILLINOIS FED. AID PROJECT | | | | |



W20-1(K)-48
STA. 87+33

LEGEND:
 PROPOSED TRAFFIC CONTROL SIGN
 DIRECTION OF TRAFFIC



STA. 103+33

FILE NAME = G:\ENGIN\06-5529-02-D1\Various Structures\CAD\0922006\Civil\Sheet\099-2000_MOT.Ldgn



| | | |
|------------------------|-------------------|-----------|
| USER NAME = #USER# | DESIGNED - KAC | REVISED - |
| DRAWN - JNH | CHECKED - KAC | REVISED - |
| PLOT SCALE = \$SCALE\$ | DATE - 02/08/2010 | REVISED - |
| PLOT DATE = 2/8/2010 | | |

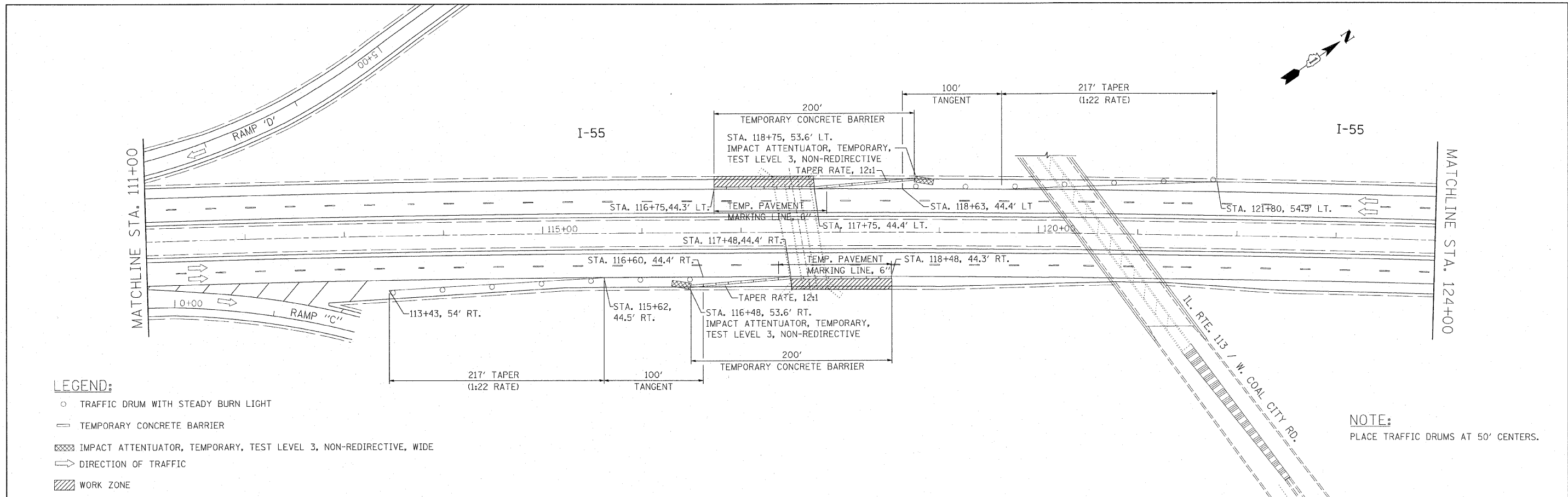
**STATE OF ILLINOIS
DEPARTMENT OF TRANSPORTATION**

**MAINTENANCE OF TRAFFIC
STRUCTURE NO. 099-2000 REPAIR**

SCALE: 1" = 50' SHEET NO. ___ OF ___ SHEETS STA. 85+00 TO STA. 111+00

| | | | | |
|--------------------|--------------|--------|-----------------------------|-----------|
| F.A.I. RTE. | SECTION | COUNTY | TOTAL SHEETS | SHEET NO. |
| 55 | 99(1+2)RS-11 | WILL | 45 | 98 |
| CONTRACT NO. 60153 | | | [ILLINOIS] FED. AID PROJECT | |

Added Sheet 2-19-10

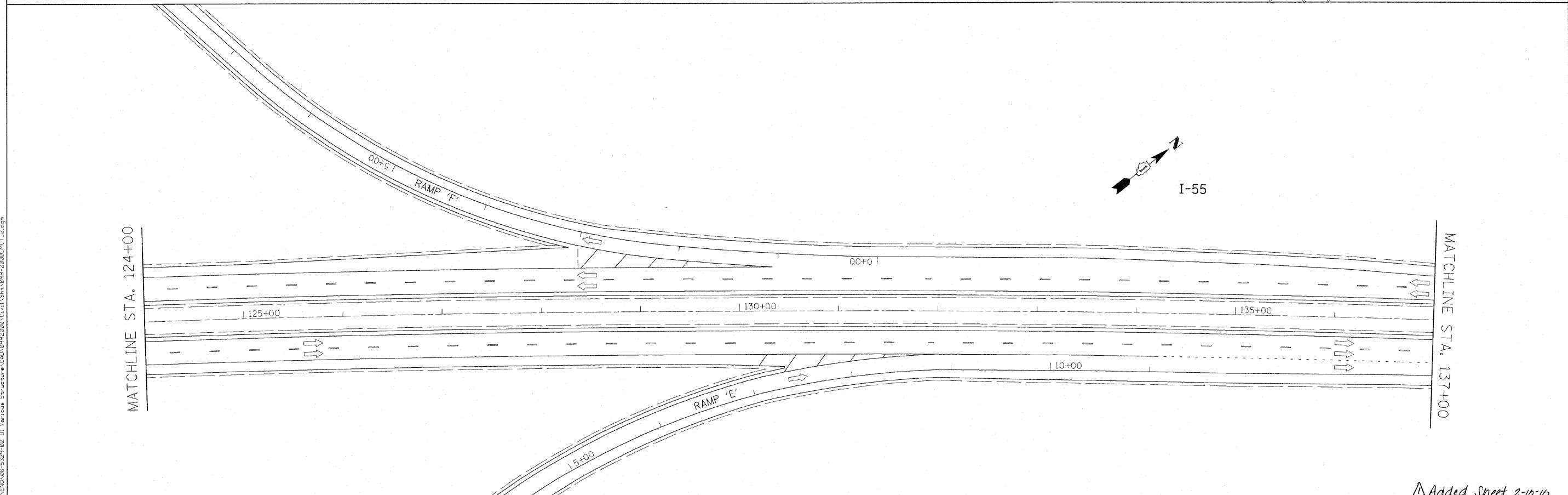


LEGEND:

- TRAFFIC DRUM WITH STEADY BURN LIGHT
- ▬ TEMPORARY CONCRETE BARRIER
- ▨ IMPACT ATTENUATOR, TEMPORARY, TEST LEVEL 3, NON-REDIRECTIVE, WIDE
- ➔ DIRECTION OF TRAFFIC
- ▩ WORK ZONE

NOTE:

PLACE TRAFFIC DRUMS AT 50' CENTERS.



FILE NAME = G:\ENR\08-5329-02-01\Structure\Structure\CD\099-2000\CD\1\Sheet\099-2000_MOT_2.dgn



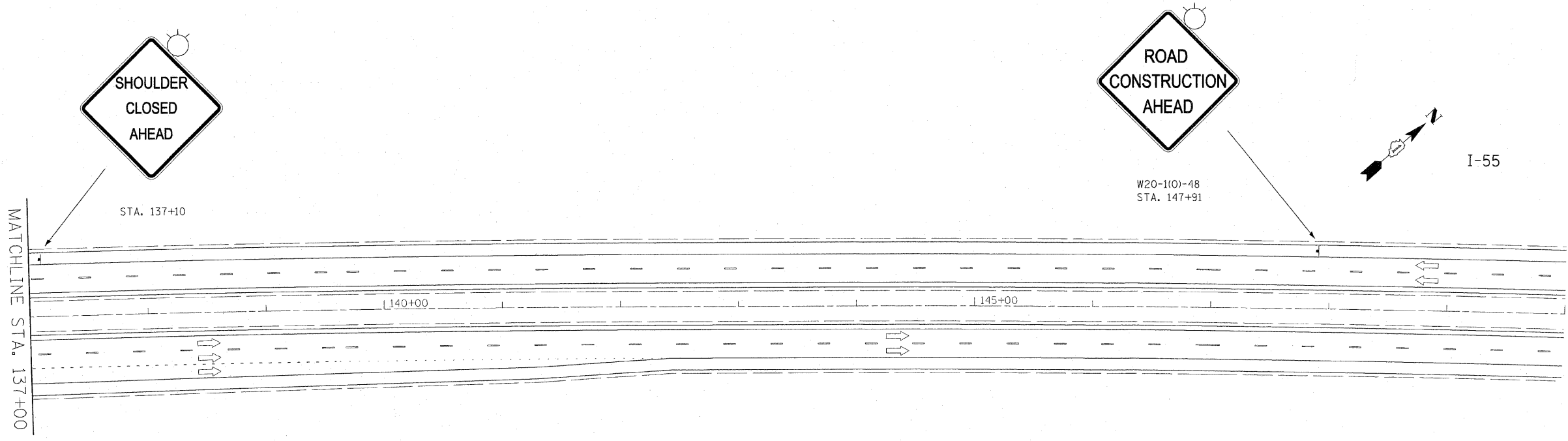
| | | |
|--------------------|----------------|-----------|
| USER NAME = #USER# | DESIGNED - KAC | REVISED - |
| DRAWN - JNH | CHECKED - KAC | REVISED - |
| DATE - 02/08/2010 | | |

**STATE OF ILLINOIS
DEPARTMENT OF TRANSPORTATION**

| | | |
|-----------------------------------------------------------------|-----------------------------|----------------------------|
| MAINTENANCE OF TRAFFIC STRUCTURE NO. 099-2000 REPAIR | | |
| SCALE: 1" = 50' | SHEET NO. ___ OF ___ SHEETS | STA. 111+00 TO STA. 137+00 |

| | | | | |
|--------------------|---------------|--------|---------------------------|-----------|
| F.A.I. RTE. | SECTION | COUNTY | TOTAL SHEETS | SHEET NO. |
| 55 | 99(1+2) 2s-11 | WILL | 45 | 9C |
| CONTRACT NO. 60T53 | | | ILLINOIS FED. AID PROJECT | |

Added Sheet 2-10-16



LEGEND:
 ▬ PROPOSED TRAFFIC CONTROL SIGN
 ⇨ DIRECTION OF TRAFFIC

FILE NAME = G:\ENR\08-5525-02_D1_Various Structures\CAD\0992000\Civil\Sheet\099-2000_w07_3.dgn



| | | |
|----------------------|-------------------|-----------------|
| USER NAME = #USER# | DESIGNED - KAC | REVISED - _____ |
| DRAWN - JNH | CHECKED - KAC | REVISED - _____ |
| PLOT SCALE = #SCALE# | DATE - 02/08/2010 | REVISED - _____ |
| PLOT DATE = 2/8/2010 | | |

**STATE OF ILLINOIS
 DEPARTMENT OF TRANSPORTATION**

**MAINTENANCE OF TRAFFIC
 STRUCTURE NO. 099-2000 REPAIR**
 SCALE: 1" = 50' SHEET NO. ___ OF ___ SHEETS STA. 137+00 TO STA. 150+00

| F.A.L. RTE. | SECTION | COUNTY | TOTAL SHEETS | SHEET NO. |
|---------------------------|--------------|--------|--------------------|-----------|
| 55 | 99(1+2)25-11 | WILL | 45 | 9B |
| | | | CONTRACT NO. 601S3 | |
| ILLINOIS FED. AID PROJECT | | | | |

Added Sheet 2-10-10

MATCH LINE STA. 350+00

MATCH LINE STA. 365+00

EXIST. CURVE E_155-13
 PI STA. = 348+78.30
 $\Delta = 0^\circ 53' 22''$ (RT)
 $D = 0^\circ 04' 55''$
 $R = 70,032.53'$
 $T = 543.65'$
 $L = 1,087.28'$
 $E = 2.11'$
 $e =$
 $T.R. =$
 $S.E. RUN =$
 $P.C. STA. = 343+34.66$
 $P.T. STA. = 354+21.93$

PT Sta 354+21.93

OMISSION FROM RESURFACING

I-55

PROP. AGGREGATE WEDGE SHOULDER, TYPE B

- ① PROP. HOT-MIX ASPHALT SURFACE REMOVAL, 4"
 PROP. POLYMERIZED HMA SURFACE COURSE, SMA, N80, 2"
 PROP. POLYMERIZED HMA BINDER COURSE, SMA, N80, 2"
- ② PROP. HOT-MIX ASPHALT SURFACE REMOVAL, 4"
 PROP. HMA SURFACE COURSE, MIX. "D", N70, 1 1/2"
 PROP. HMA BINDER COURSE, IL-19, N70, 2 1/2"
- ③ PROP. HOT-MIX ASPHALT SURFACE REMOVAL, 2 1/4"
 PROP. HMA SURFACE COURSE, MIX. "D", N70, 1 1/2"
 PROP. POLY. LEVELING BINDER, IL-4.75, N50, 3/4"

- Ⓐ PROP. PREFORMED PLASTIC PAVEMENT MARKING, TYPE B-INLAID-LINE 5" (TYP.)
- Ⓑ PROP. THERMOPLASTIC PAVEMENT MARKING-LINE 4", WHITE (TYP.)
- Ⓒ PROP. THERMOPLASTIC PAVEMENT MARKING-LINE 4", YELLOW (TYP.)
- Ⓓ PROP. THERMOPLASTIC PAVEMENT MARKING-LINE 8", WHITE (TYP.)
- Ⓔ PROP. THERMOPLASTIC PAVEMENT MARKING-LINE 12", WHITE (TYP.)

| | | | |
|----------------------------------------------|-----------------------------|------------|-----------|
| FILE NAME - | USER NAME = abebawa | DESIGNED - | REVISED - |
| c:\pwwork\PWIDOT\ABEBAWA\0169692\shdplan.dgn | | DRAWN - | REVISED - |
| | PLOT SCALE = 50.0000' / IN. | CHECKED - | REVISED - |
| | PLOT DATE = 2/10/2010 | DATE - | REVISED - |

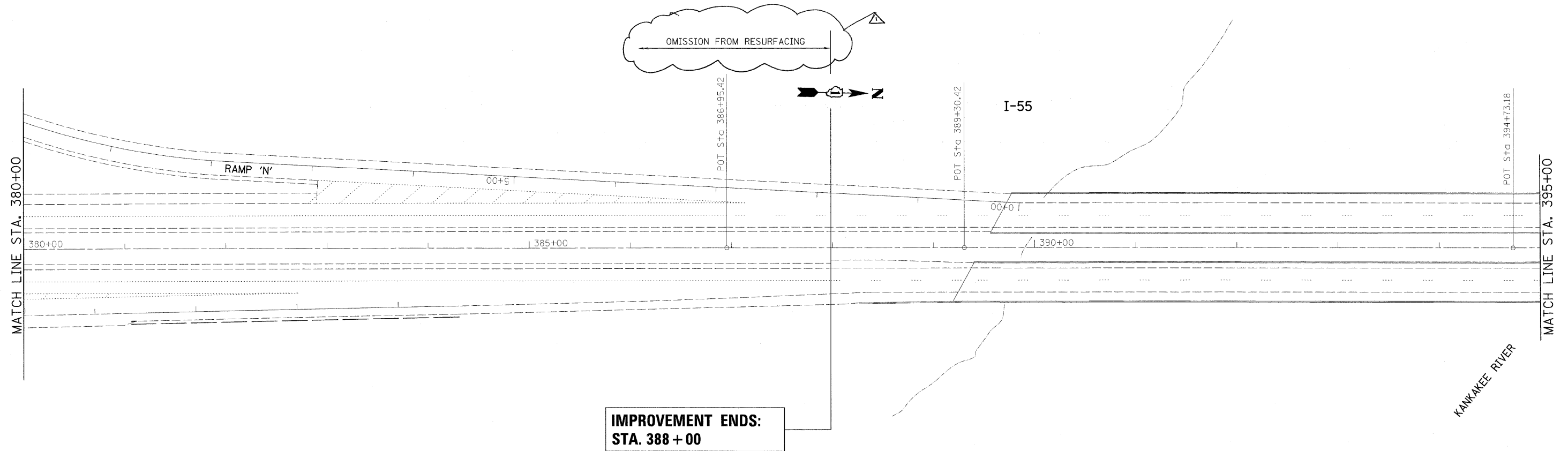
**STATE OF ILLINOIS
 DEPARTMENT OF TRANSPORTATION**

IL. ROUTE 55
 GRUNDY COUNTY LINE TO KANKAKEE RIVER

| | | | | |
|---------------------------|----------------|--------|--------------|-----------|
| F.A.I. RTE. | SECTION | COUNTY | TOTAL SHEETS | SHEET NO. |
| 55 | 99 (1&2) R5-11 | WILL | 45 | 26 |
| CONTRACT NO. 60153 | | | | |
| ILLINOIS FED. AID PROJECT | | | | |

2/10/2010

SCALE: SHEET NO. OF SHEETS STA. TO STA.



- ① PROP. HOT-MIX ASPHALT SURFACE REMOVAL, 4"
PROP. POLYMERIZED HMA SURFACE COURSE, SMA, N80, 2"
PROP. POLYMERIZED HMA BINDER COURSE, SMA, N80, 2"
- ② PROP. HOT-MIX ASPHALT SURFACE REMOVAL, 4"
PROP. HMA SURFACE COURSE, MIX. "D", N70, 1 1/2"
PROP. HMA BINDER COURSE, IL-19, N70, 2 1/2"
- ③ PROP. HOT-MIX ASPHALT SURFACE REMOVAL, 2 1/4"
PROP. HMA SURFACE COURSE, MIX. "D", N70, 1 1/2"
PROP. POLY. LEVELING BINDER, IL-4.75, N50, 3/4"

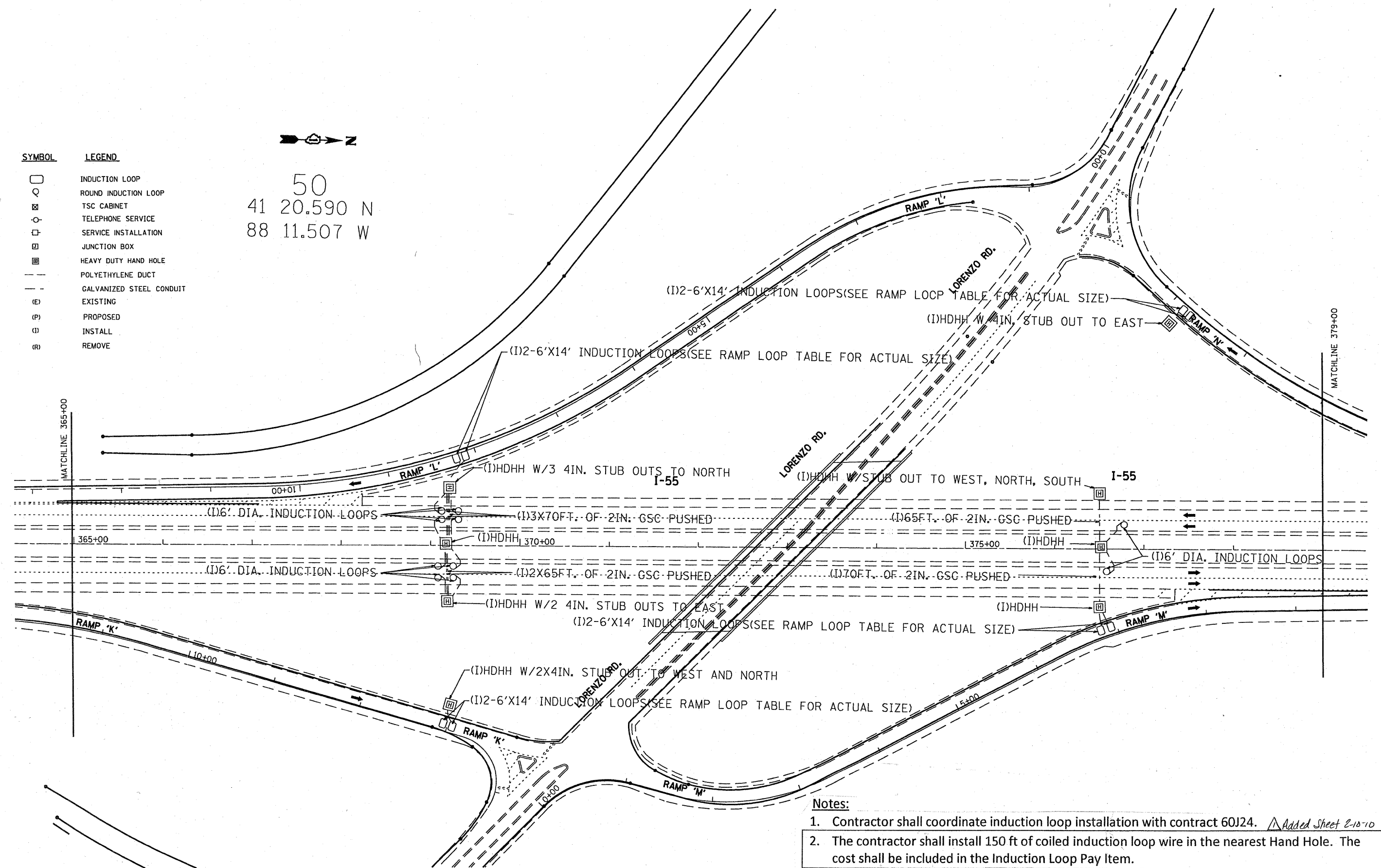
- Ⓐ PROP. PREFORMED PLASTIC PAVEMENT MARKING, TYPE B-INLAID-LINE 5" (TYP.)
- Ⓑ PROP. THERMOPLASTIC PAVEMENT MARKING-LINE 4", WHITE (TYP.)
- Ⓒ PROP. THERMOPLASTIC PAVEMENT MARKING-LINE 4", YELLOW (TYP.)
- Ⓓ PROP. THERMOPLASTIC PAVEMENT MARKING-LINE 8", WHITE (TYP.)
- Ⓔ PROP. THERMOPLASTIC PAVEMENT MARKING-LINE 12", WHITE (TYP.)

2/10/2010

| | | | | | | | | | | | | |
|--------------------------------------------------|---------------------|------------|-----------|-----------------------------------------------------------|--------------------------------------------------------------|----------------|------|----------------|---------|--------|-----------------|--------------|
| FILE NAME = | USER NAME = abebawa | DESIGNED - | REVISED - | STATE OF ILLINOIS DEPARTMENT OF TRANSPORTATION | IL. ROUTE 55 GRUNDY COUNTY LINE TO KANKAKEE RIVER | | | F.A.I. RTE. | SECTION | COUNTY | TOTAL SHEETS | SHEET NO. |
| ca\pw_work\PW\DOT\ABEBAWA\d0169692\shht-plan.dgn | | DRAWN - | REVISED - | | 55 | 99 (I&2) RS-11 | WILL | 45 | 28 | | | |
| PLOT SCALE = 50.0000' / IN. | | CHECKED - | REVISED - | | CONTRACT NO. 60153 | | | | | | | |
| PLOT DATE = 2/10/2010 | | DATE - | REVISED - | | ILLINOIS FED. AID PROJECT | | | | | | | |

| SYMBOL | LEGEND |
|--------|--------------------------|
| | INDUCTION LOOP |
| | ROUND INDUCTION LOOP |
| | TSC CABINET |
| | TELEPHONE SERVICE |
| | SERVICE INSTALLATION |
| | JUNCTION BOX |
| | HEAVY DUTY HAND HOLE |
| | POLYETHYLENE DUCT |
| | GALVANIZED STEEL CONDUIT |
| (E) | EXISTING |
| (P) | PROPOSED |
| (I) | INSTALL |
| (R) | REMOVE |

50
 41 20.590 N
 88 11.507 W



- Notes:**
- Contractor shall coordinate induction loop installation with contract 60J24. *Added Sheet 2-10-10*
 - The contractor shall install 150 ft of coiled induction loop wire in the nearest Hand Hole. The cost shall be included in the Induction Loop Pay Item.

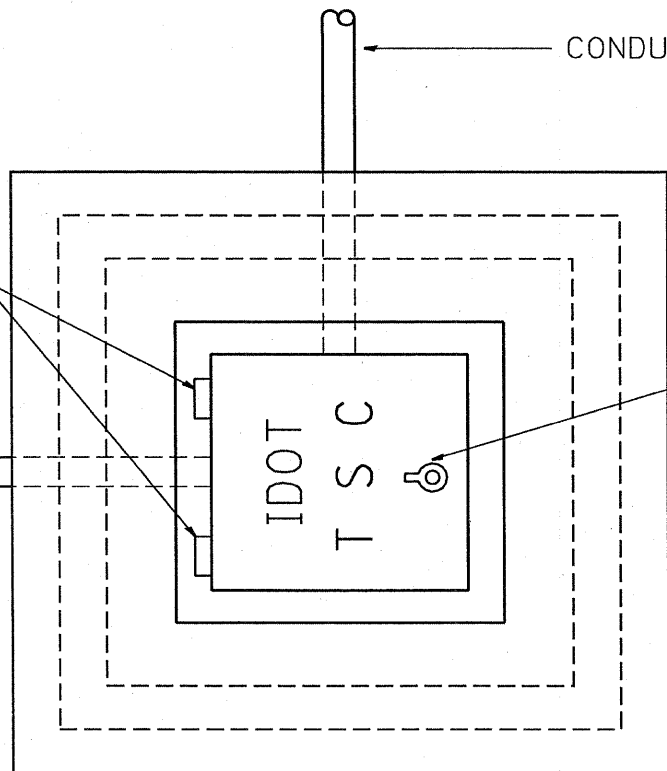
| | | | | | | | | | | | | |
|------------------------------------------|------------------------------|-------------------|-----------|-----------------------------------------------------------------|-----------------------------------------------------------------------|---------------------|-------------------|-------------------------|----------------|--------------------|------------------|--|
| FILE NAME = C:\ndf06810\TSCSHEETS.dgn | USER NAME = mezeg | DESIGNED - J.G. | REVISED - | STATE OF ILLINOIS DEPARTMENT OF TRANSPORTATION | TRAFFIC SYSTEMS CENTER LORENZO RD. LOOP INSTALLATION | | F.A.I. RTE. 53 | SECTION 99(1+2)RS-11 | COUNTY Will | TOTAL SHEETS 45 | SHEET NO. 34A | |
| | PLOT SCALE = 100.0041' / IN. | DRAWN - G.M. | REVISED - | | SCALE: | SHEET NO. OF SHEETS | STA. TO STA. | CONTRACT NO. 60J24 | | | | |
| | PLOT DATE = 2/9/2010 | CHECKED - J.G. | REVISED - | | ILLINOIS FED. AID PROJECT | | | | | | | |
| | | DATE - 02/08/2010 | REVISED - | | | | | | | | | |

TYPE "T" HINGES REQUIRED ONLY ON
ON HEAVY DUTY SPECIAL.

CONDUIT TYP.

CONDUIT TYP.

TYPE "G" HANDLE FOR BOTH HDHH AND HDHH SPECIAL



PLAN

HEAVY DUTY HANDHOLE MINIMUM DIMENSIONS (UNHINGED)

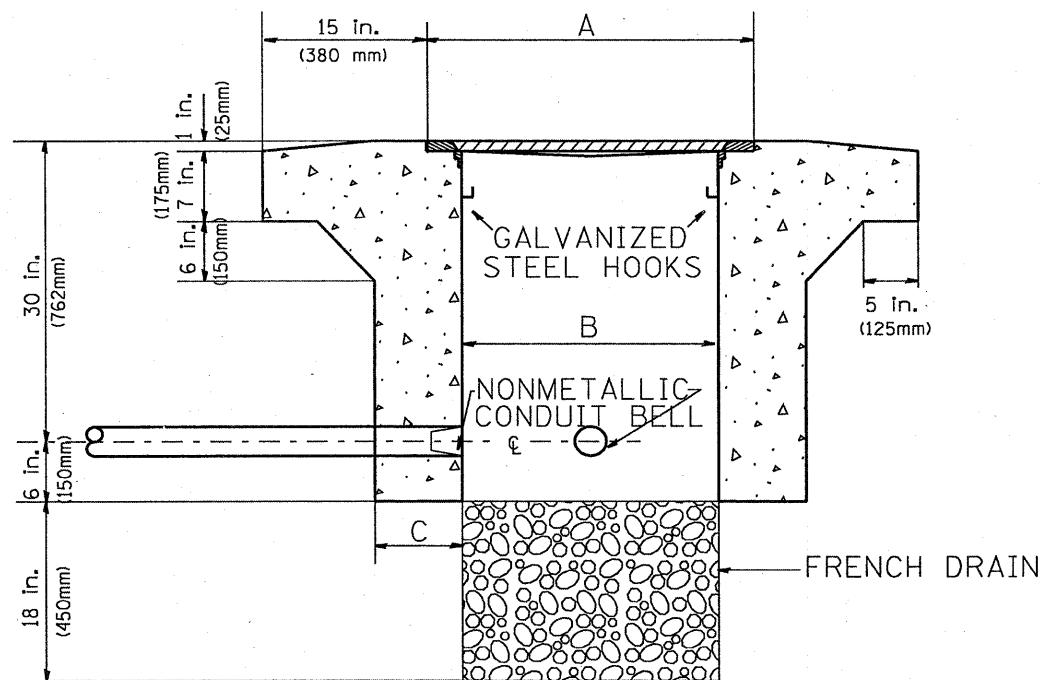
| | |
|---|--------------|
| A | 28" (711 mm) |
| B | 22" (559 mm) |
| C | 8" (200 mm) |

(FRAME AND COVER 260 LBS. (118 Kg.) MIN.)

HEAVY DUTY HANDHOLE SPECIAL MINIMUM DIMENSIONS

| | |
|---|----------------|
| A | 31.5" (800 mm) |
| B | 30" (762 mm) |
| C | 10" (250 mm) |

(FRAME AND COVER 405 LBS. (184 Kg. (405))



ELEVATION

PC CONCRETE - HEAVY DUTY HAND HOLE

FILE NAME =
C:\d106010\155TSC.TYP.dgn

USER NAME = mezeg
DESIGNED - R.L.
DRAWN - G.M.
CHECKED - R.L.
DATE - 09/11/96

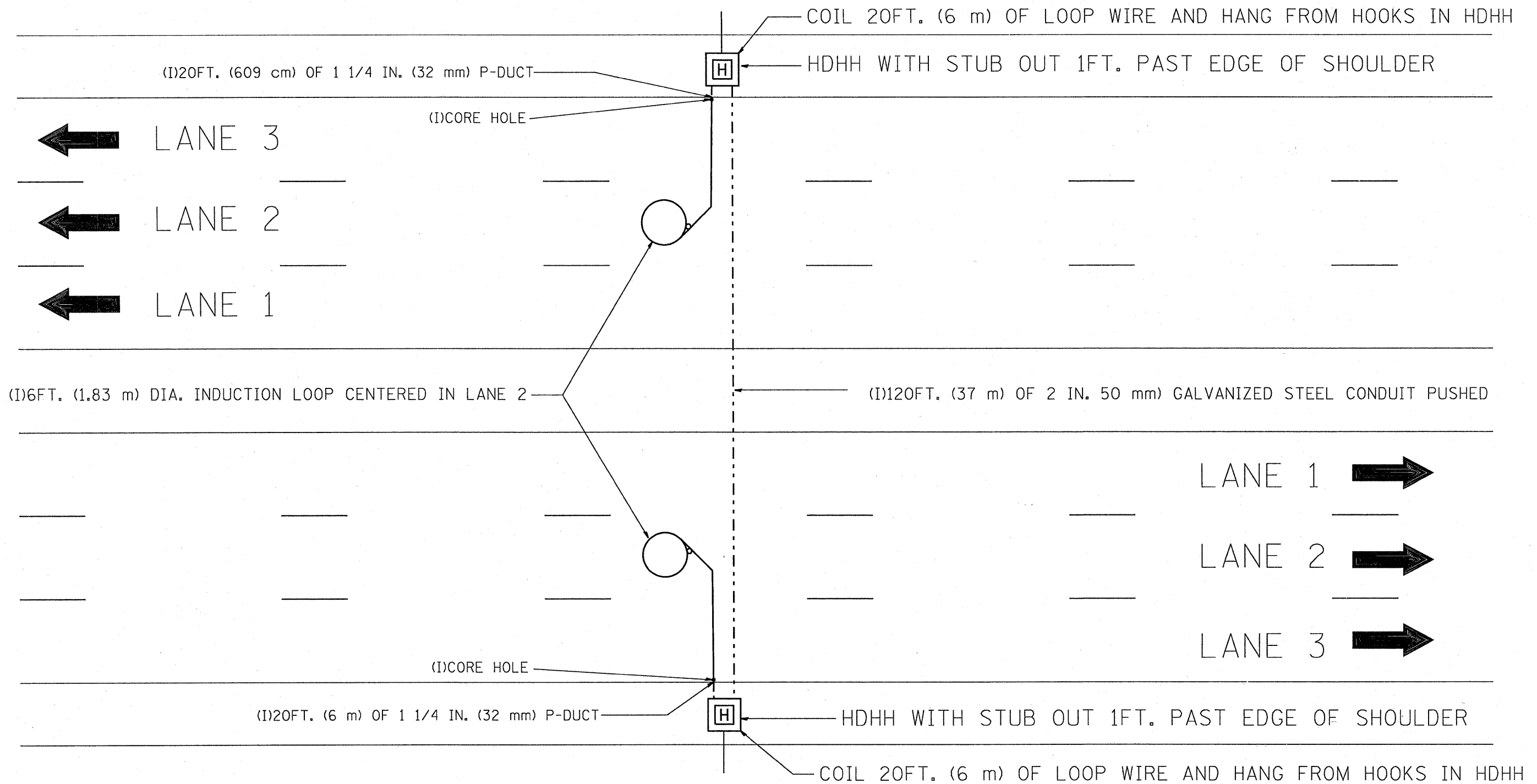
REVISED - 04/97
REVISED -
REVISED -
REVISED -

STATE OF ILLINOIS
DEPARTMENT OF TRANSPORTATION
TRAFFIC SYSTEMS CENTER

PC CONCRETE - HEAVY DUTY
HAND HOLE
SCALE: NONE SHEET NO. OF SHEETS STA. TO STA.

F.A.I. RTE. SECTION COUNTY TOTAL SHEETS SHEET NO.
55 99(1+2) 25-11 Will 45 37B
CONTRACT NO. 60IS3
FED. ROAD DIST. NO. ILLINOIS FED. AID PROJECT

Added Sheet 2-10-10



NOTE:

THE COST OF LOOP WIRE IN HDHH IS INCIDENTAL TO THE INDUCTION LOOP.
IT SHALL NOT BE MEASURE FOR PAYMENT.

INSTALL AT STATIONS.

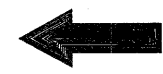
| | | | | | | | | | | | |
|-------------------------------------------|------------------------------|-----------------|-----------|-----------------------------------------------------------------------------|------------------------|---------------------|-----------------------------------------------|---------|--------|--------------|-----------|
| FILE NAME = C:\vd10681\B\155TSC1YP.dgn | USER NAME = mezag | DESIGNED - J.G. | REVISED - | STATE OF ILLINOIS DEPARTMENT OF TRANSPORTATION TRAFFIC SYSTEMS CENTER | ONE LANE COUNT STATION | | F.A. RTE. | SECTION | COUNTY | TOTAL SHEETS | SHEET NO. |
| | PLOT SCALE = 100.0000' / IN. | CHECKED - J.G. | REVISED - | | SCALE: NONE | SHEET NO. OF SHEETS | STA. TO STA. | 99(1+2) | Will | 45 | 34C |
| PLOT DATE = 2/8/2010 | DATE - 01-31-07 | REVISED - | | | | | CONTRACT NO. 601S3 | | | | |
| | | | | | | | FED. ROAD DIST. NO. ILLINOIS FED. AID PROJECT | | | | |

Added Sheet 2-19-10

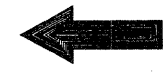
COIL 20FT. (6 m) OF LOOP WIRE AND HANG FROM HOOKS IN HDHH

HDHH WITH STUB OUT 1FT. (30.48 cm) PAST EDGE OF SHOULDER

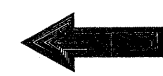
(I)10FT. (3 m) OF 1 1/4 IN. (32 mm) (P-DUCT(TRENCHED))



LANE 3



LANE 2



LANE 1

(I)120FT. (37 m) OF 2 IN. (50 mm) GALVANIZED STEEL CONDUIT PUSHED

(I)6FT. DIA. (1.83 m) INDUCTION LOOP CENTERED IN EACH LANE

LANE 1



LANE 2



LANE 3



HDHH WITH STUB OUT 1FT. (30.48 cm) PAST EDGE OF SHOULDER

(I)CORE HOLE

(I)10FT. (3 m) OF 1 1/4 IN. (30.0 mm) P-DUCT(TRENCHED)

COIL 20FT. (6 m) OF LOOP WIRE AND HANG FROM HOOKS IN HDHH

NOTE:

THE COST OF LOOP WIRE IN HDHH IS INCIDENTAL TO THE INDUCTION LOOP. IT SHALL NOT BE MEASURE FOR PAYMENT.

INSTALL AT STATIONS.

| | | | |
|-----------------------------------------|-----------------------------|-----------------|-----------|
| FILE NAME = C:\d106010\1057SCTYP.dgn | USER NAME = mezeg | DESIGNED - J.G. | REVISED - |
| | | DRAWN - G.M. | REVISED - |
| | PLOT SCALE = 100.0000 / IN. | CHECKED - J.G. | REVISED - |
| | PLOT DATE = 2/8/2010 | DATE - 01-31-07 | REVISED - |

STATE OF ILLINOIS
DEPARTMENT OF TRANSPORTATION
TRAFFIC SYSTEMS CENTER

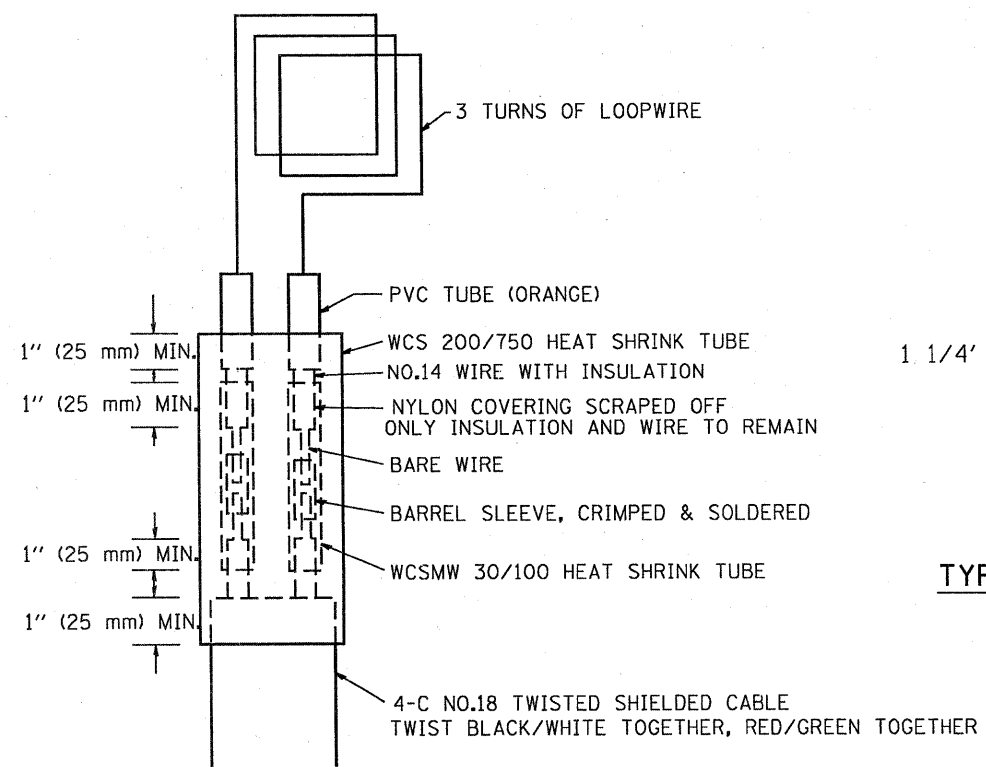
3 LANE COUNT STATION

SCALE: NONE SHEET NO. OF SHEETS STA. TO STA.

Added Sheet 2-19-10

| F.A. RTE. | SECTION | COUNTY | TOTAL SHEETS | SHEET NO. |
|-------------------------------------------------|---------------|--------|--------------------|-----------|
| 55 | 99(1+2) 2S-11 | Will | 45 | 34D |
| FED. ROAD DIST. NO. [ILLINOIS] FED. AID PROJECT | | | CONTRACT NO. 60153 | |

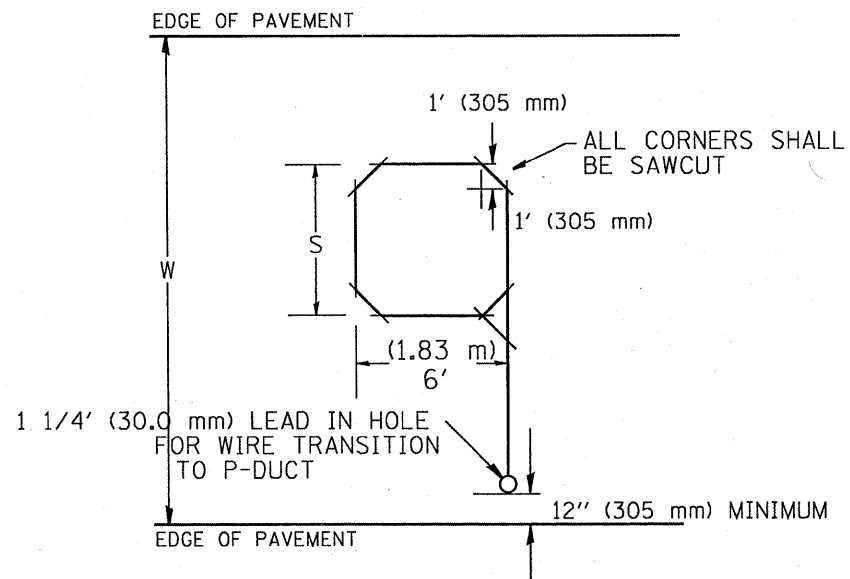
TRAFFIC SYSTEMS CENTER (TY-1TSC-400#32)



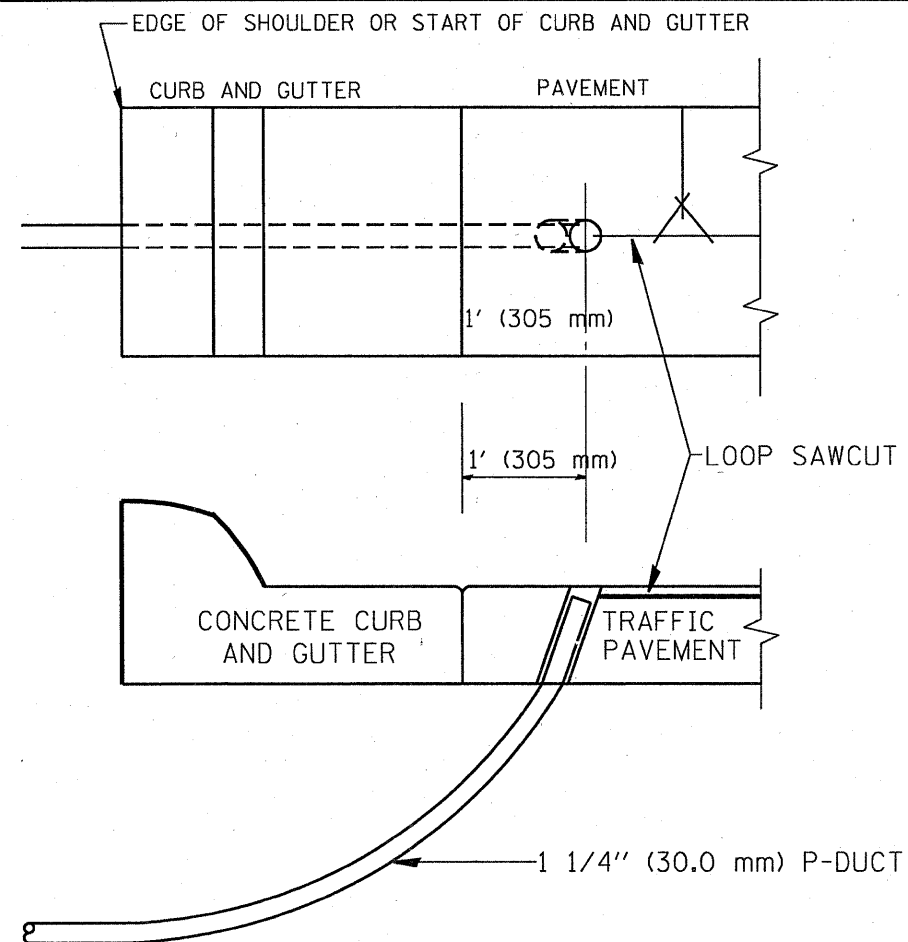
MINIMUM 1" (25 mm) HEAT SHRINK TUBING OVERLAP ON WIRE, PVC & SHIELDED CABLE TO FORM WATER TIGHT SEAL

LOOP SPLICING REQUIREMENTS

| TABLE 1 | |
|-------------|-------------|
| WIDTH (W) | WIDTH (S) |
| 12' (3.7 m) | 8' (2.5 m) |
| 13' (4.0 m) | 9' (2.8 m) |
| 14' (4.3 m) | 10' (3.1 m) |
| 15' (4.6 m) | 11' (3.4 m) |
| 16' (4.9 m) | 12' (3.7 m) |
| 17' (5.2 m) | 13' (4.0 m) |
| 18' (5.5 m) | 14' (4.3 m) |
| 19' (5.8 m) | 15' (4.6 m) |
| 20' (6.1 m) | 18' (4.9 m) |
| 21' (6.4 m) | 17' (5.2 m) |
| 22' (6.7 m) | 18' (5.5 m) |
| 23' (7.0 m) | 19' (5.8 m) |
| 24' (7.3 m) | 20' (6.1 m) |
| 25' (7.6 m) | 21' (6.4 m) |



TYPICAL "S" FT. BY 6' (1.83 m) INDUCTION LOOP SAWCUT LAYOUT FOR RAMPS



CURB AND GUTTER LOOP LEAD-IN TRANSITION DETAIL

NOTES

1. EACH LOOP SHALL BE SPLICED TO A 4-C NO.18 TWISTED SHIELDED LEAD IN WHEN 150' (45 m) OR MORE FROM CABINET.
2. LOOPS SHALL BE SPLICED IN HANDHOLES ONLY, OTHERWISE WRITTEN PERMISSION SHALL BE OBTAINED FROM TSC ENGINEER.
3. LOOPS SHALL NOT BE SPLICED IN SERIES.
4. EACH LOOP LEAD IN SHALL BE IDENTIFIED AND PERMANENTLY COLOR CODED IN THE COREHOLE, HANDHOLE & CABINETS THRU WHICH THEY ENTER OR PASS AND TAGGED WITH THE CORRECT NOMENCLATURES.

FILE NAME = C:\d106010\105TCTYP.dgn

| | | |
|------------------------------|-----------------|-----------------|
| USER NAME = meazg | DESIGNED - R.L. | REVISED - 6/94 |
| | DRAWN - G.M. | REVISED - 11/95 |
| PLOT SCALE = 100.0000 "/ IN. | CHECKED - R.L. | REVISED - 05/96 |
| PLOT DATE = 2/8/2018 | DATE - 6-22-94 | REVISED - 10/96 |

**STATE OF ILLINOIS
DEPARTMENT OF TRANSPORTATION
TRAFFIC SYSTEMS CENTER**

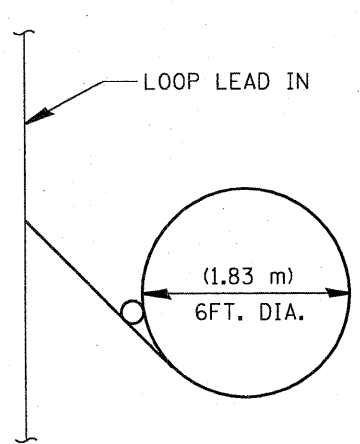
**RECTANGULAR INDUCTION LOOP
TYPICAL**

SCALE: NONE SHEET NO. OF SHEETS STA. TO STA.

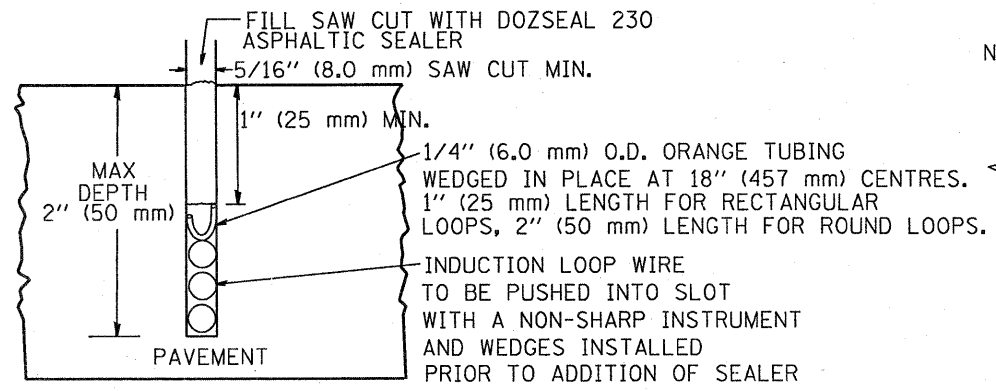
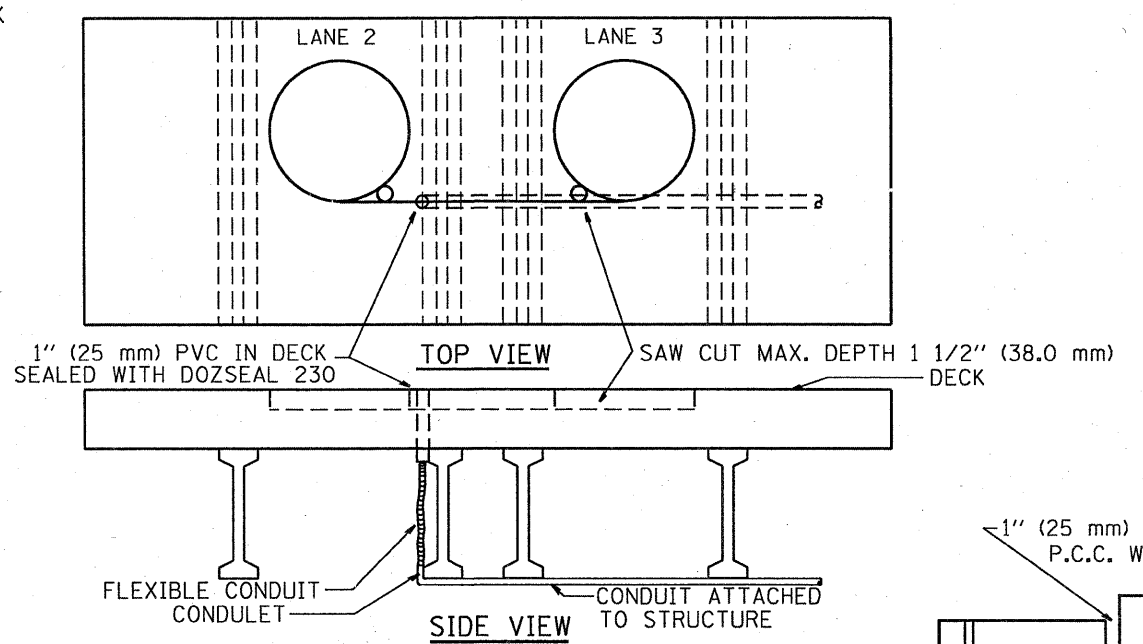
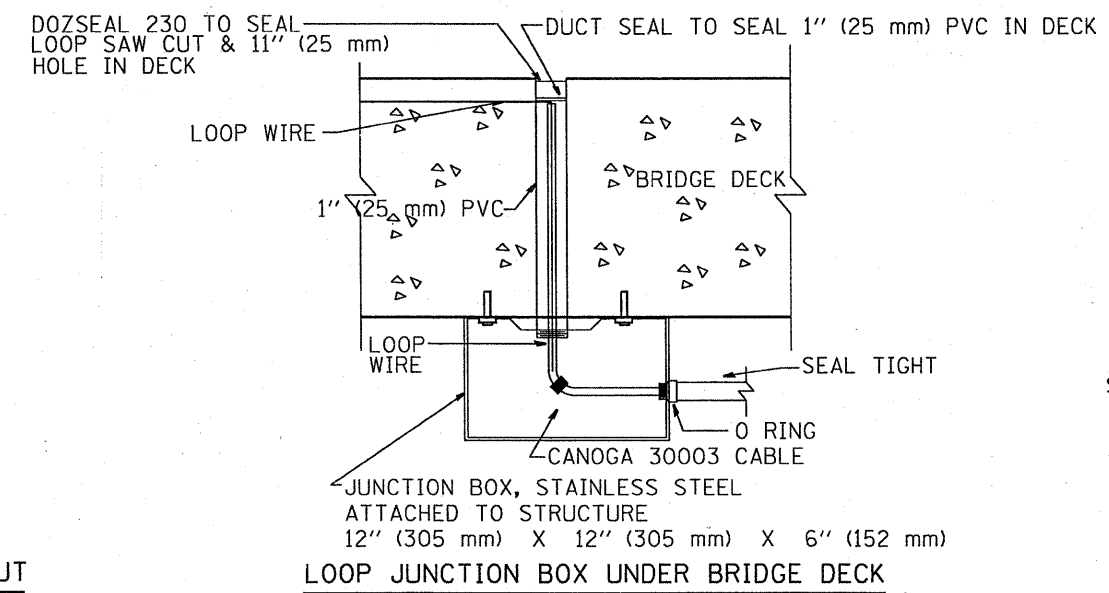
| | | | | |
|-----------------------------------------------|--------------|--------|--------------------|-----------|
| F.A. RTE. | SECTION | COUNTY | TOTAL SHEETS | SHEET NO. |
| 55 | 99(1+2)RS-11 | Will | 45 | 24E |
| FED. ROAD DIST. NO. ILLINOIS FED. AID PROJECT | | | CONTRACT NO. 60153 | |

Added Sheet 2-10-10

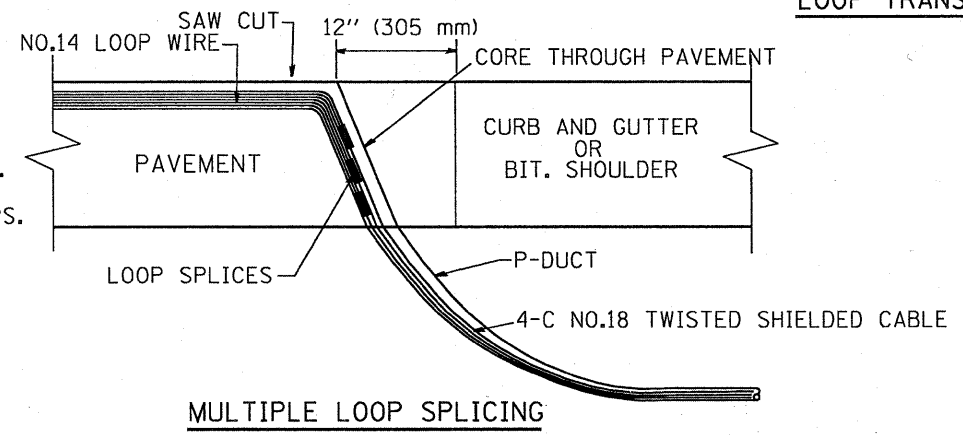
TRAFFIC SYSTEMS CENTER (TY-1TSC-418#3)



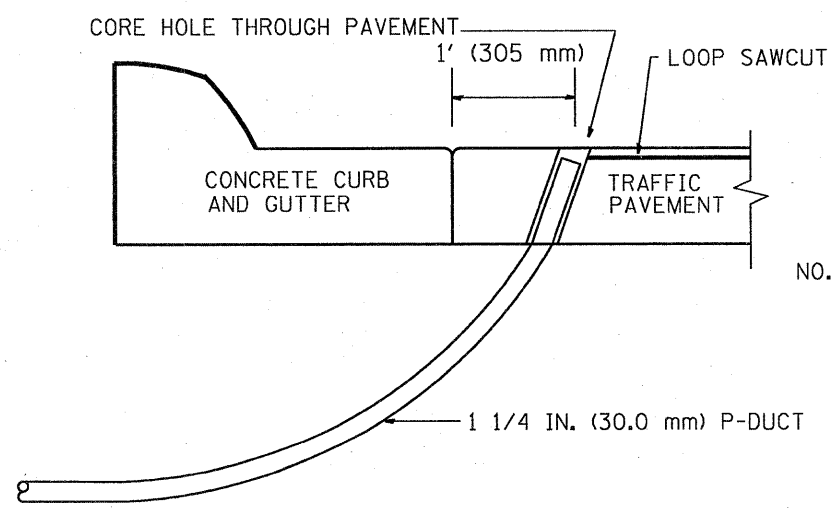
TYPICAL LOOP SAWCUT LAYOUT



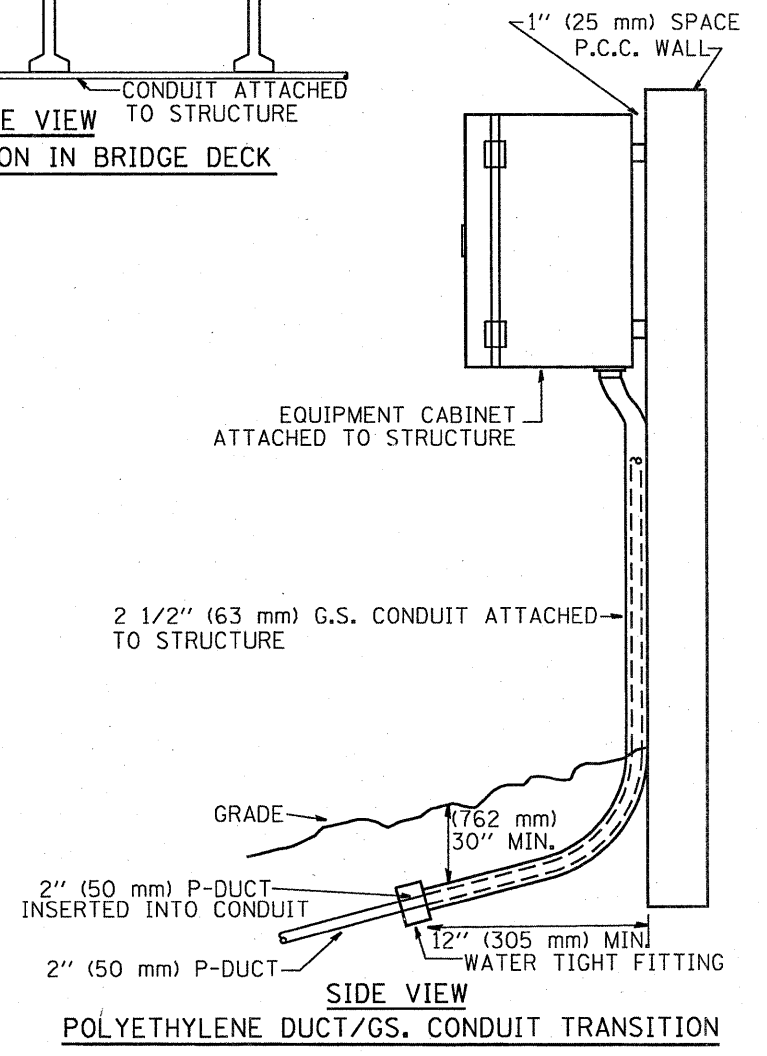
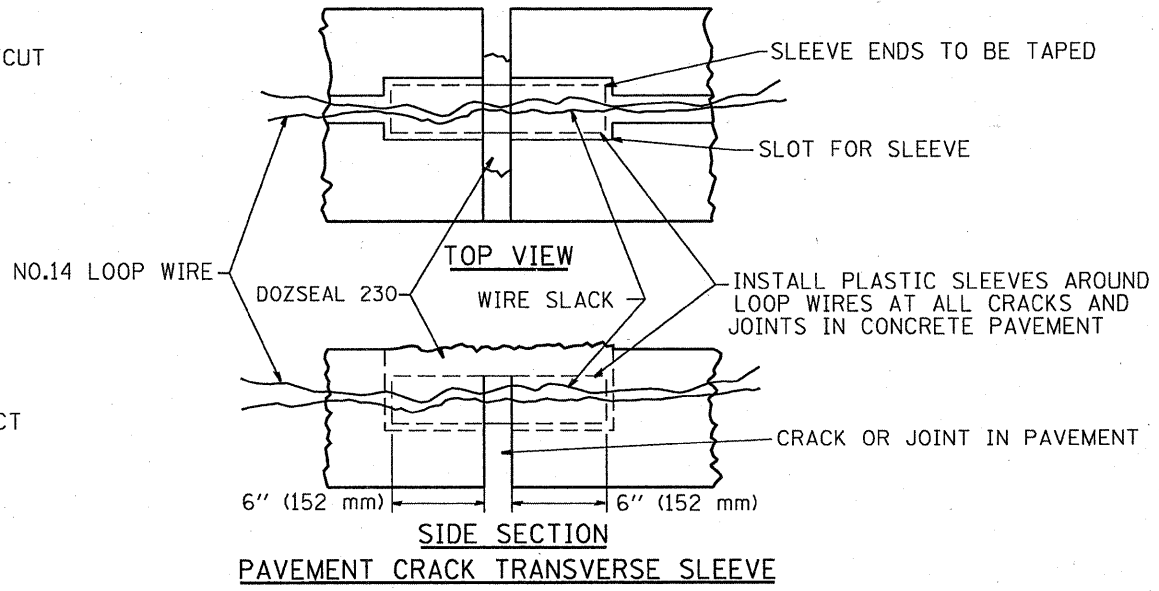
LOOP CROSS SECTION IN PAVEMENT



MULTIPLE LOOP SPLICING



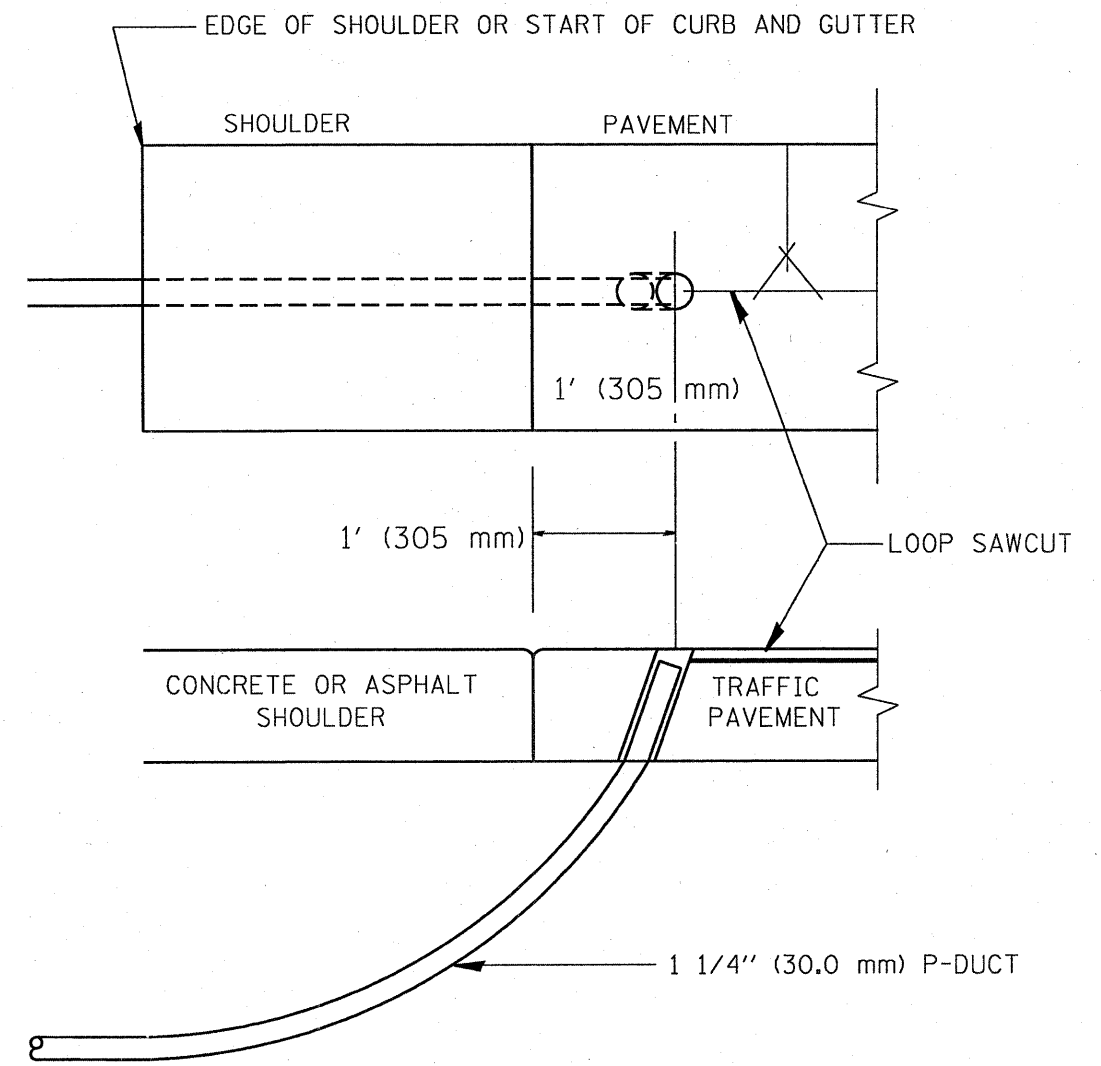
SIDE SECTION LOOP LEAD-IN TRANSITION DETAIL



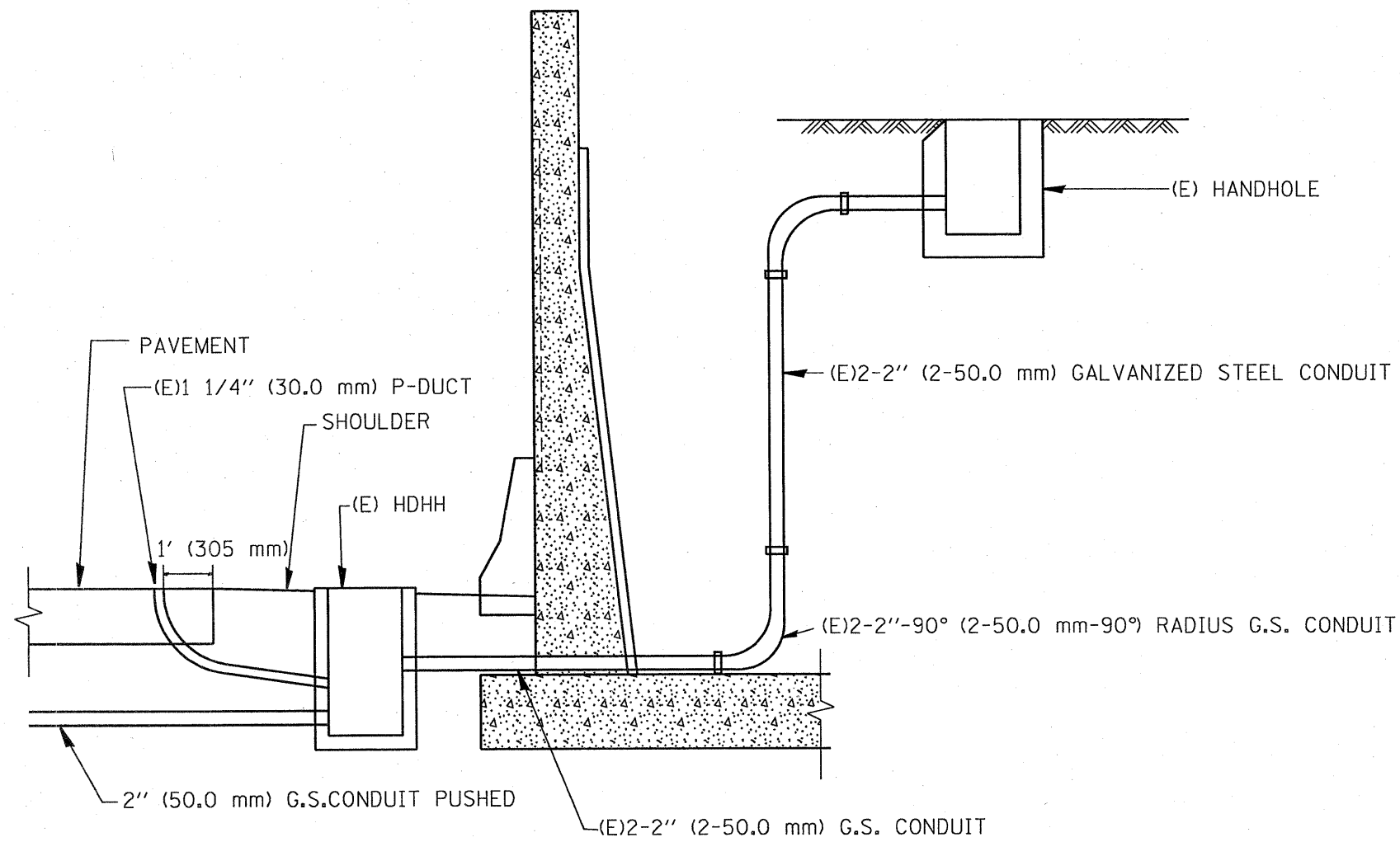
| | | | |
|-------------------------------------|-------------------|-----------------|-----------------|
| FILE NAME = C:\d105010\155TCTYP.dgn | USER NAME = mezeg | DESIGNED - R.L. | REVISED - 06/94 |
| | | DRAWN - G.M. | REVISED - 03/96 |
| | | CHECKED - R.L. | REVISED - 11/96 |
| | | DATE - 06/22/94 | REVISED - 10/96 |

STATE OF ILLINOIS
DEPARTMENT OF TRANSPORTATION
TRAFFIC SYSTEMS CENTER

| | | | | | | | | |
|-------------|--|---------------------|--------------|-------------------------------------------------|---------------|--------------------|--------------|-----------|
| SCALE: NONE | | SHEET NO. OF SHEETS | STA. TO STA. | F.A.1 RTE. | SECTION | COUNTY | TOTAL SHEETS | SHEET NO. |
| | | | | 55 | 99(1+2) R5-11 | W.11 | 45 | 34F |
| | | | | FED. ROAD DIST. NO. [ILLINOIS] FED. AID PROJECT | | CONTRACT NO. 60153 | | |



SHOULDER LOOP LEAD-IN
TRANSITION DETAIL



FILE NAME =
C:\d106010\155TCTYP.dgn

USER NAME = meazg
DESIGNED - R.L.
DRAWN - G.M.
PLOT SCALE = 100.0000 / IN.
PLOT DATE = 2/8/2010

DESIGNED - R.L.
DRAWN - G.M.
CHECKED - R.L.
DATE - 6-22-94

REVISED - 6/94
REVISED - 11/95
REVISED - 05/96
REVISED - 10/96

STATE OF ILLINOIS
DEPARTMENT OF TRANSPORTATION
TRAFFIC SYSTEMS CENTER

TYPICAL INDUCTION LOOP LEAD-IN
TRANSITION DIAGRAMS
SCALE: NONE SHEET NO. OF SHEETS STA. TO STA.

F.A.1
RTE. SECTION COUNTY TOTAL SHEETS SHEET NO.
55 99(1+2) 23-11 W.11 45 346
CONTRACT NO. 60IS3
FED. ROAD DIST. NO. [ILLINOIS] FED. AID PROJECT

Added Sheet 2-10-10

TRAFFIC SYSTEMS CENTER (TY-1TSC-418#5)

