

STATE OF ILLINOIS
DEPARTMENT OF TRANSPORTATION

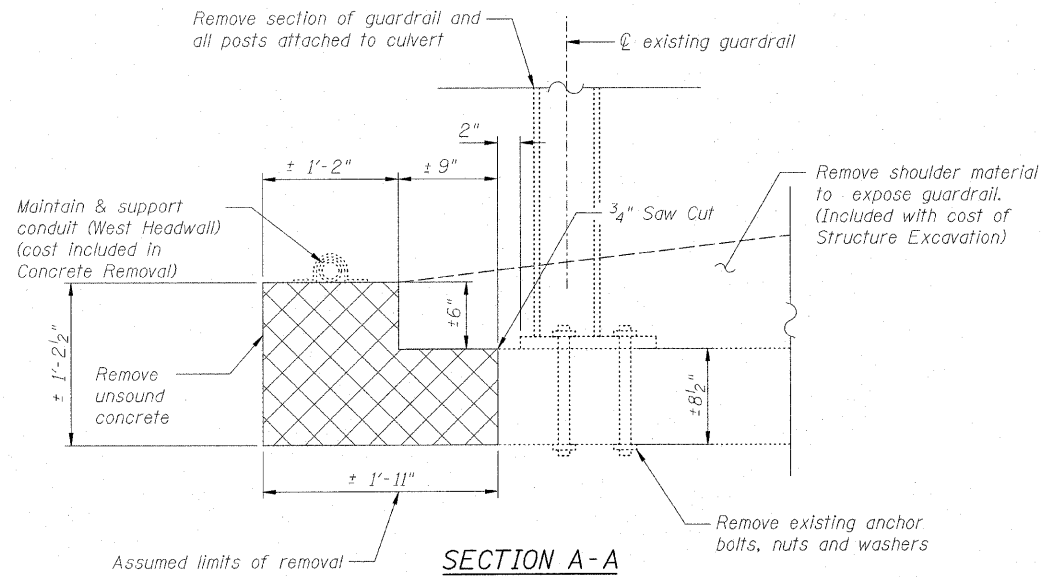
NOTE "A"

The existing reinforcement bars extending into the removal area shall be cleaned, straightened and incorporated into the new construction. Any reinforcement bars that are damaged during concrete removal shall be replaced with an approved bar splicer or anchorage system. Cost included with Concrete Removal.

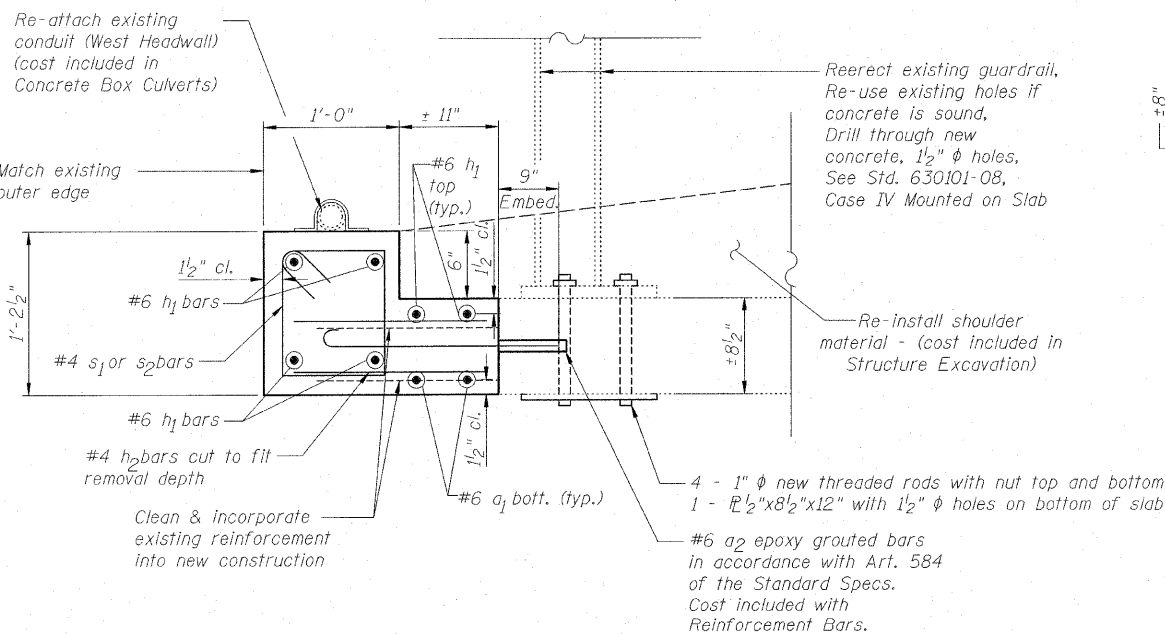
BILL OF MATERIAL

Bar	No.	Size	Length	Shape
a ₁	4	#6	38'-6"	
a ₂	76	#6	2'-11"	
h ₁	12	#6	37'-2"	
h ₂	88	#4	2'-0"	
s ₁	36	#4	4'-1"	
s ₂	36	#4	3'-10"	
Reinforcement Bars		Pound	2000	
Concrete Removal		Cu. Yd.	5.2	
Concrete Box Culverts		Cu. Yd.	5.2	
Removal & Reinstallation of Steel Plate Beam Guardrail, Attached to Structures		Ft.	82	

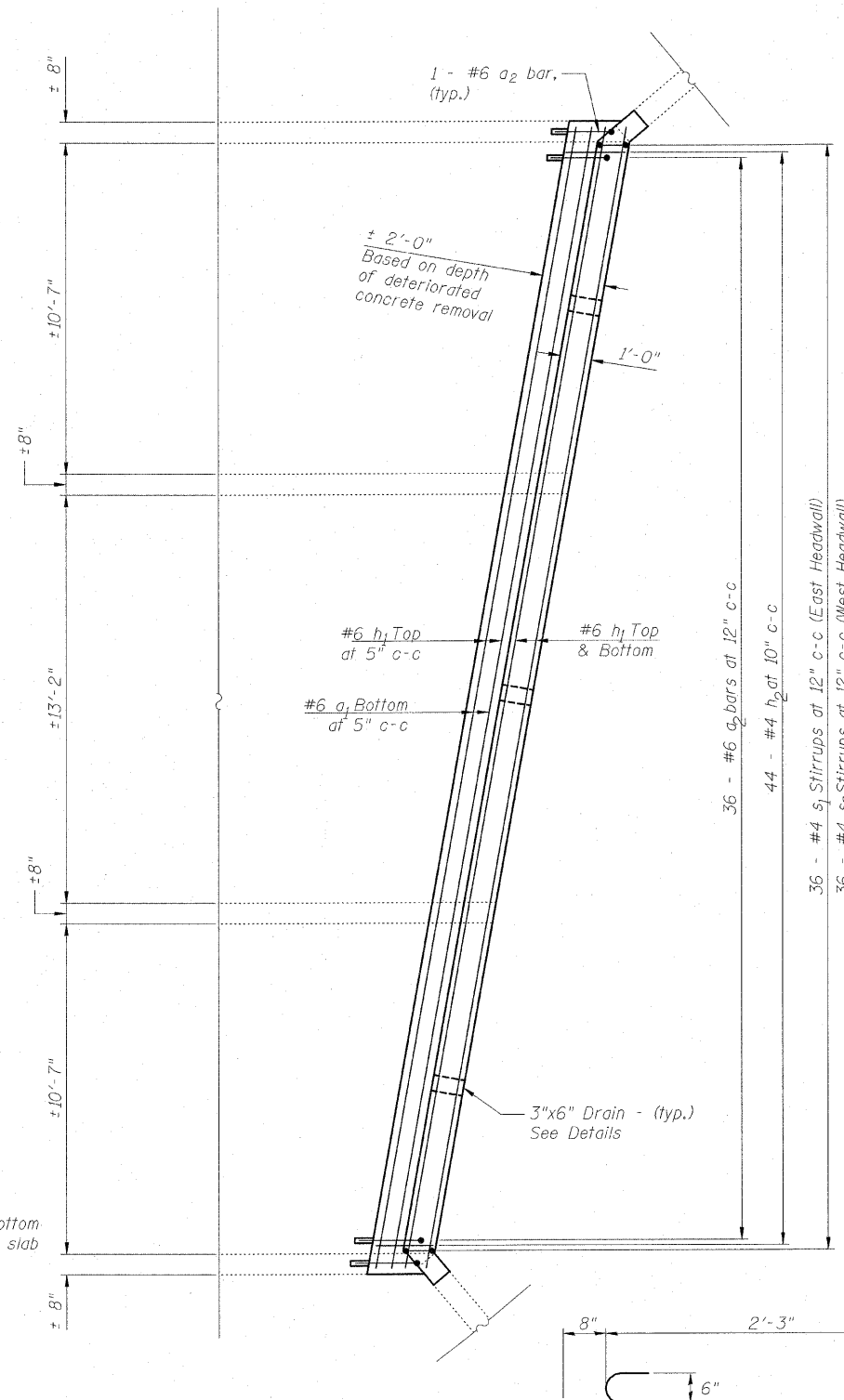
Quantities shown above are for both headwalls combined.



SECTION A-A
REMOVAL

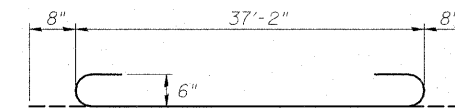


SECTION A-A
PROPOSED

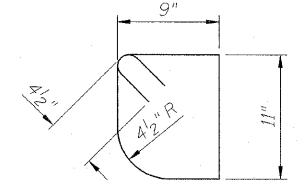


HEADWALL PLAN

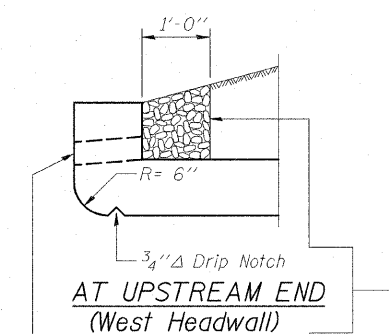
(East Headwall Shown - West Headwall Similar)



BAR a₁

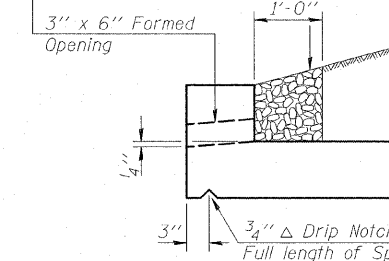


BAR s₂
(Upstream End)

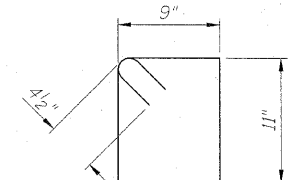


AT UPSTREAM END
(West Headwall)

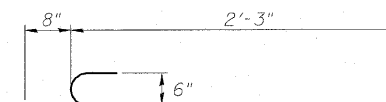
Coarse aggregate full length of both headwalls. Cost included with Concrete Box Culverts



AT DOWNSTREAM END
(East Headwall)



BAR s₁
(Downstream End)



BAR a₂

DRAIN DETAIL

HEADWALL RECONSTRUCTION
STRUCTURE NO. 099-2000

DESIGNED	BRT
CHECKED	BJM
DRAWN	JNH
CHECKED	BJM



Wight & Company
2500 North Frontage Road, Darien, IL 60561
630.969.7000 630.969.7979 fax
Design Firm Registration 184-000451

SHEET NO. 2 3 SHEETS	F.A.I. RTE.	SECTION	COUNTY	TOTAL SHEETS	SHEET NO.
	55	99 (1+2) RS-11	WILL	45	33
CONTRACT NO. 60153					
FED. ROAD DIST. NO. - ILLINOIS FED. AID PROJECT					