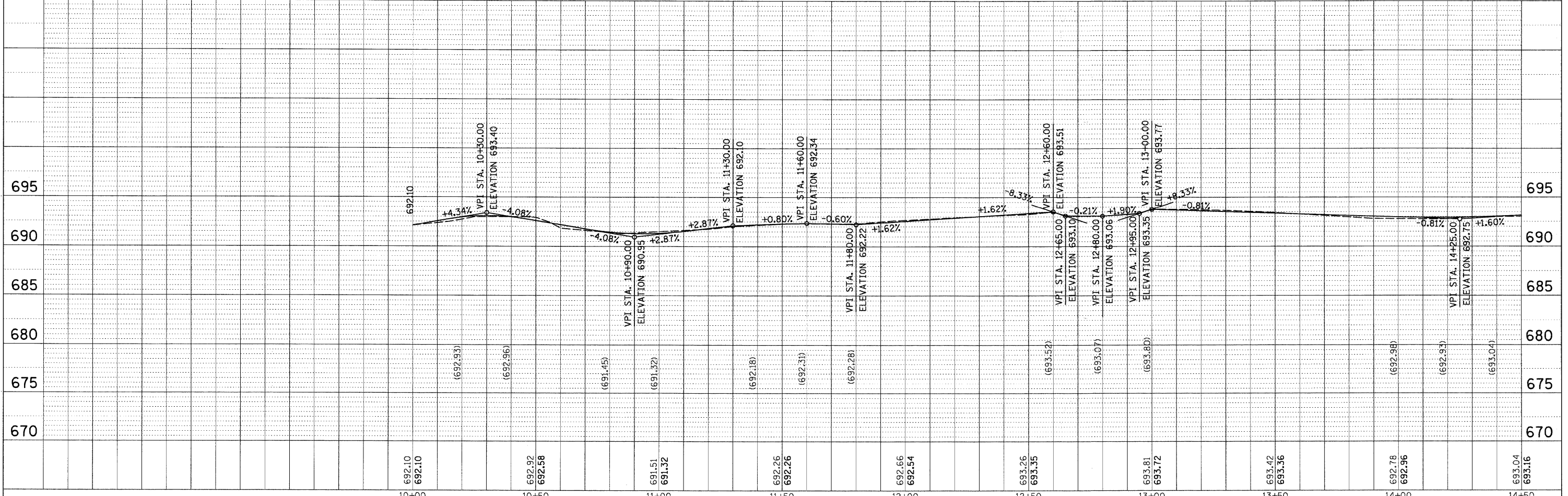
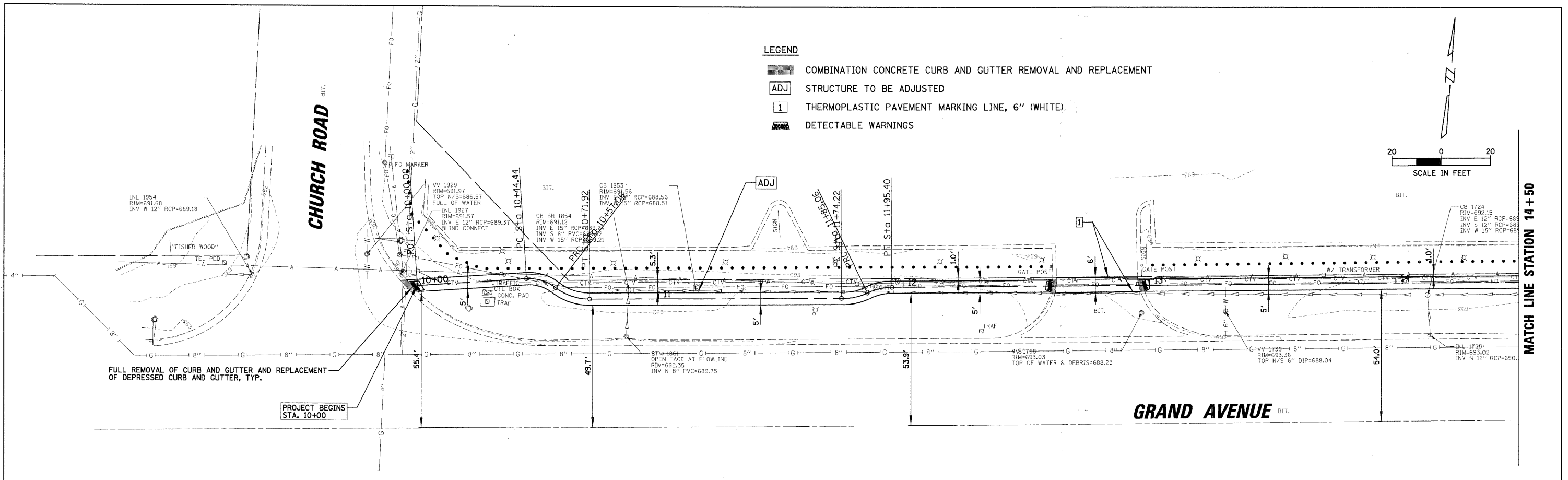
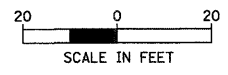


PLAN	SURVEYED	BY	DATE
	ALIGNED		
	NOTED		
	NO. OF WAY CHECKED		
	NO. OF FILE NAME		

PROFILE	SURVEYED	BY	DATE
	GRADES CHECKED		
	STRUCTURE NOTATIONS CHECKED		
	NO. OF NOTES		
	NO. OF STRUCTURE NOTATIONS		

- LEGEND**
- COMBINATION CONCRETE CURB AND GUTTER REMOVAL AND REPLACEMENT
 - STRUCTURE TO BE ADJUSTED
 - THERMOPLASTIC PAVEMENT MARKING LINE, 6" (WHITE)
 - DETECTABLE WARNINGS



FILE NAME = N:\BENSENVILLE\00059\Cv1\APP1.dgn	USER NAME = MAGOLDEN	DESIGNED - DRAWN - CHECKED - DATE -	REVISED - REVISED - REVISED - REVISED -	ADDENDUM 1 - 8/27/09	STATE OF ILLINOIS DEPARTMENT OF TRANSPORTATION		SIDEWALK PLAN AND PROFILE		F.A.U. RTE. 1376	SECTION 08-00086-00-SW	COUNTY	TOTAL SHEETS 41	SHEET NO. 11
PLOT SCALE = 20'				DATE					SCALE: 20'	SHEET NO. OF SHEETS	STA. TO STA.	CONTRACT NO. 63187 ILLINOIS FED. AID PROJECT CMM-9003 (053)	