
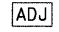
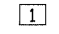

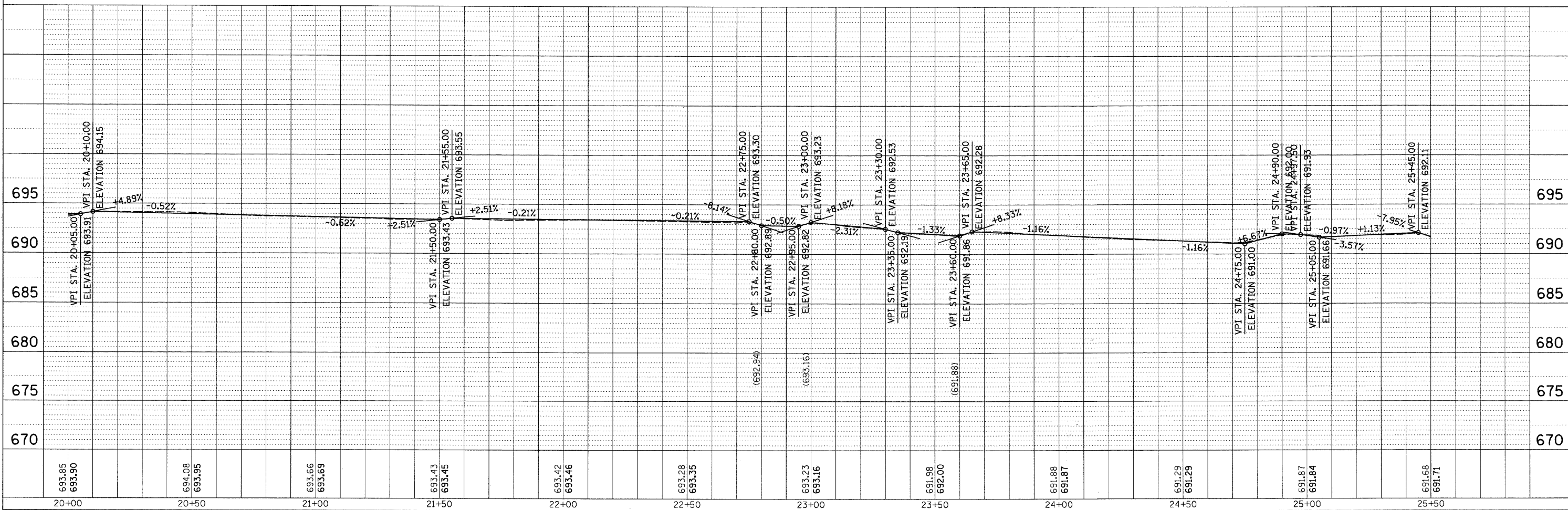
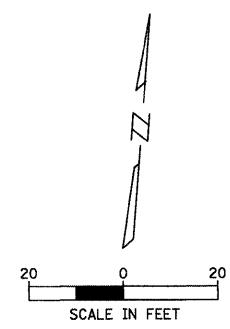
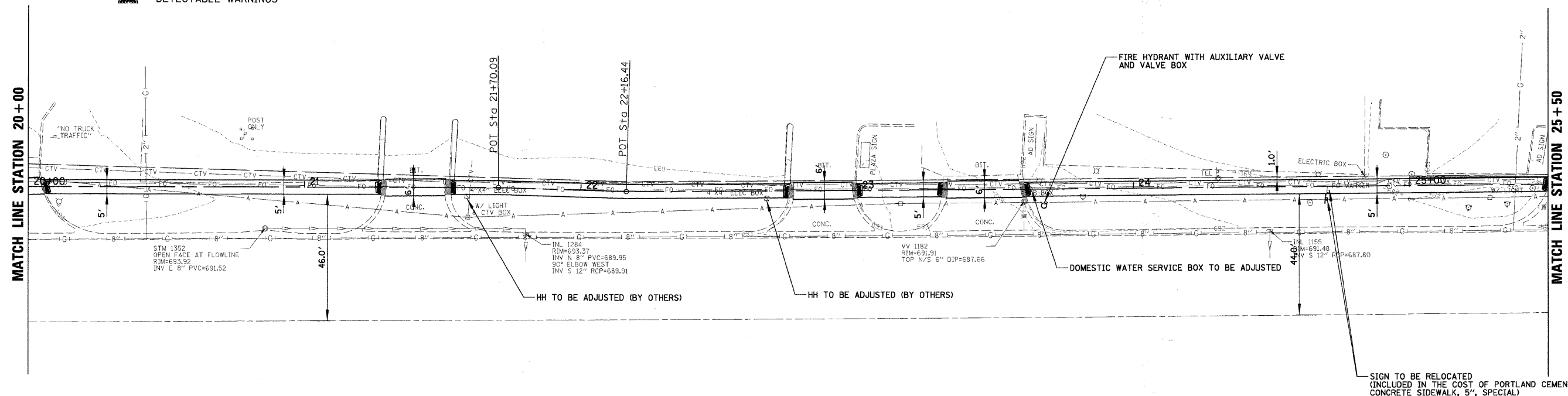


**LEGEND**

-  COMBINATION CONCRETE CURB AND GUTTER REMOVAL AND REPLACEMENT
-  STRUCTURE TO BE ADJUSTED
-  THERMOPLASTIC PAVEMENT MARKING LINE, 6" (WHITE)
-  DETECTABLE WARNINGS

PLAN	SURVEYED	BY	DATE
	ALIGNED		
	CHECKED		
	NO. OF		
	FILE		

PROFILE	SURVEYED	BY	DATE
	GRADES		
	CHECKED		
	NO. OF		
	FILE		



FILE NAME = N:\BENSENVILLE\080659\Civil\1\RP3.dgn	USER NAME = MAGOLDEN	DESIGNED -	REVISED - $\Delta$ ADDENDUM 1 - 8/27/09	F.A.U. RTEL 1376	SECTION 08-00086-00-SW	COUNTY DUPAGE	TOTAL SHEETS 41	SHEET NO. 13
	PLOT SCALE = 20'	DRAWN -	REVISED -	SCALE: 20'		SHEET NO. OF SHEETS STA. TO STA.		CONTRACT NO. 63187
	PLOT DATE = 12/14/2009	CHECKED -	REVISED -	STATE OF ILLINOIS DEPARTMENT OF TRANSPORTATION		SIDEWALK PLAN AND PROFILE		ILLINOIS FED. AID PROJECT CMM-9003 (053)