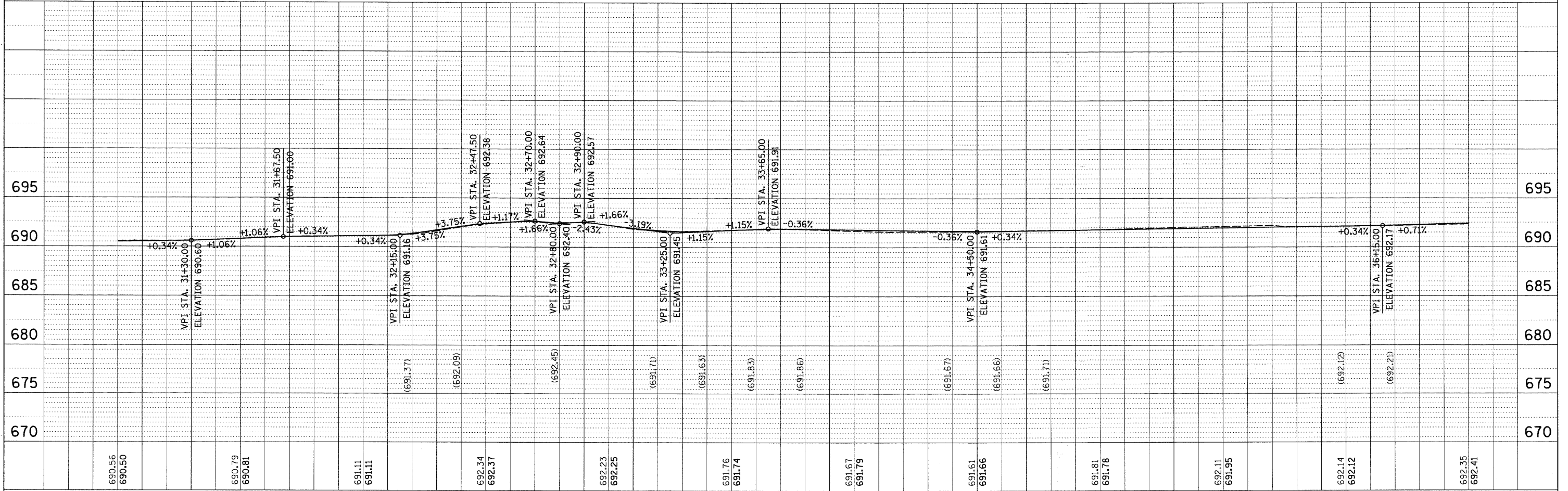
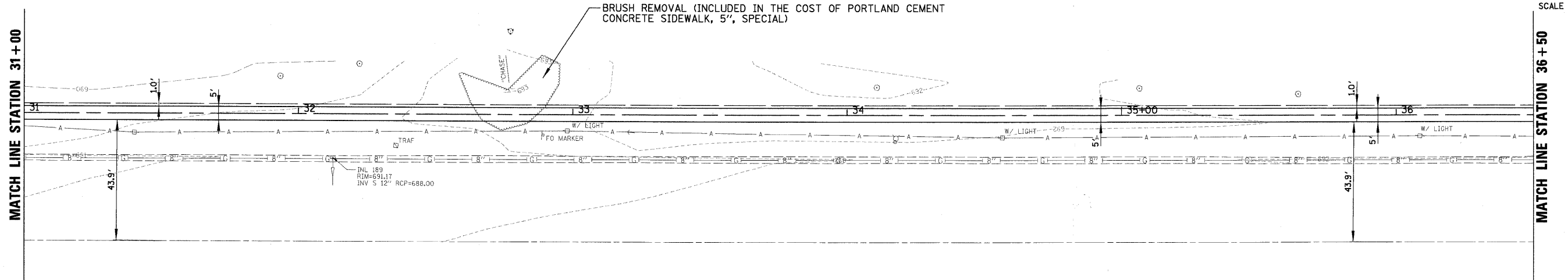
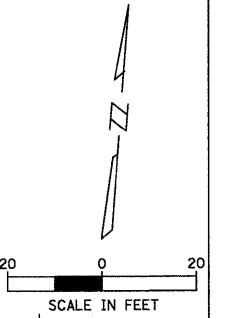


LEGEND

- COMBINATION CONCRETE CURB AND GUTTER REMOVAL AND REPLACEMENT
- ADJ STRUCTURE TO BE ADJUSTED
- THERMOPLASTIC PAVEMENT MARKING LINE, 6" (WHITE)
- DETECTABLE WARNINGS



PLAN	SURVEYED	BY	DATE
	ALIGNED		
	GRADES CHECKED		
	RT. OF WAY CHECKED		
	NO. OF WAY CHECKED		
	NO. OF WAY CHECKED		
	NO. OF WAY CHECKED		
	NO. OF WAY CHECKED		
	NO. OF WAY CHECKED		
	NO. OF WAY CHECKED		

PROFILE	SURVEYED	BY	DATE
	GRADES CHECKED		
	B.M. NOTED		
	STRUCTURE NOTATIONS CHECKED		
	NO. OF WAY CHECKED		
	NO. OF WAY CHECKED		
	NO. OF WAY CHECKED		
	NO. OF WAY CHECKED		
	NO. OF WAY CHECKED		
	NO. OF WAY CHECKED		

FILE NAME = N:\BENSENVILLE\080659\Civ11\RP5.dgn	USER NAME = MAGOLDEN	DESIGNED -	REVISED - ADDENDUM 1 - 8/27/09	STATE OF ILLINOIS DEPARTMENT OF TRANSPORTATION	SIDEWALK PLAN AND PROFILE	F.A.U. RTE. 1376	SECTION 08-00086-00-SW	COUNTY DUPAGE	TOTAL SHEETS 41	SHEET NO. 15
PLOT SCALE = 20'				SCALE: 20'		SHEET NO. OF SHEETS STA. TO STA.		CONTRACT NO. 63187		
PLOT DATE = 12/14/2009								ILLINOIS FED. AID PROJECT CMM-9003 (053)		