
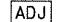
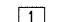

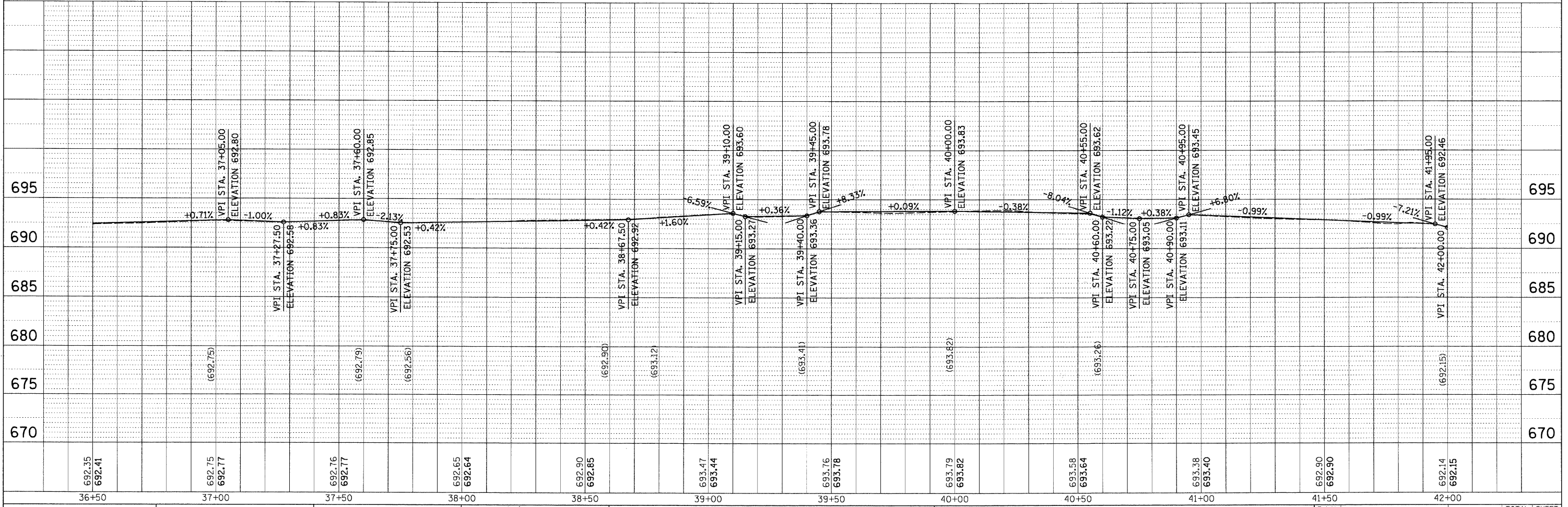
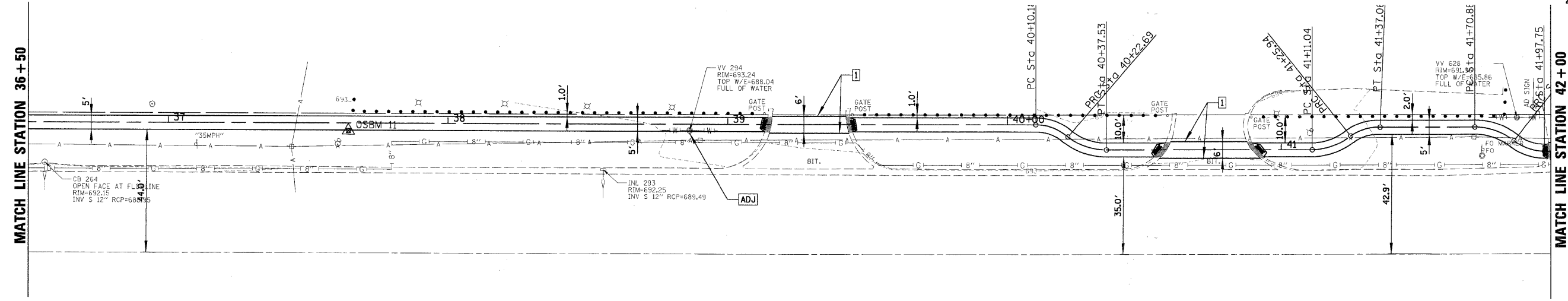
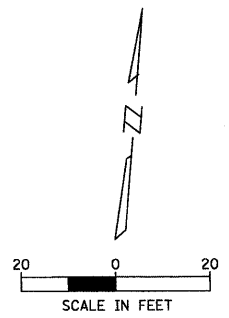


PLAN	SURVEYED	BY	DATE
	ALIGNED		
	NOTE BOOK		
	CHECKED		
	BY		
	NO.		

PROFILE	SURVEYED	BY	DATE
	GRADES CHECKED		
	NOTE BOOK		
	CHECKED		
	BY		
	NO.		

- LEGEND**
-  COMBINATION CONCRETE CURB AND GUTTER REMOVAL AND REPLACEMENT
 -  STRUCTURE TO BE ADJUSTED
 -  THERMOPLASTIC PAVEMENT MARKING LINE, 6" (WHITE)
 -  DETECTABLE WARNINGS



FILE NAME = N:\BENSENVILLE\060659\Civil\NRP6.dgn	USER NAME = MAGOLDEN	DESIGNED - DRAWN - CHECKED - DATE -	REVISED - REVISED - REVISED - REVISED -	ADDENDUM 1 - 8/27/09	STATE OF ILLINOIS DEPARTMENT OF TRANSPORTATION	SIDWALK PLAN AND PROFILE	F.A.U. RTE. 1376	SECTION 08-00086-00-SW	COUNTY DUPAGE	TOTAL SHEETS 41	SHEET NO. 16	CONTRACT NO. 63187	ILLINOIS FED. AID PROJECT CMM-9003 (053)
---	----------------------	--	--	----------------------	---	--------------------------	---------------------	------------------------	---------------	-----------------	--------------	--------------------	--