
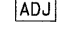


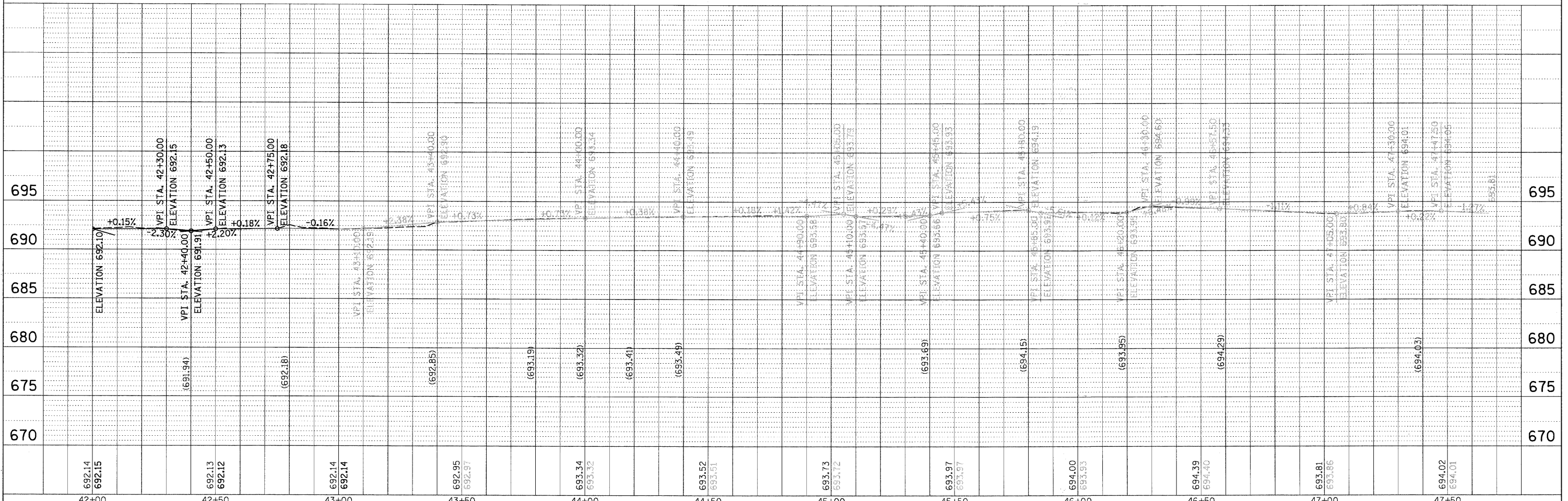
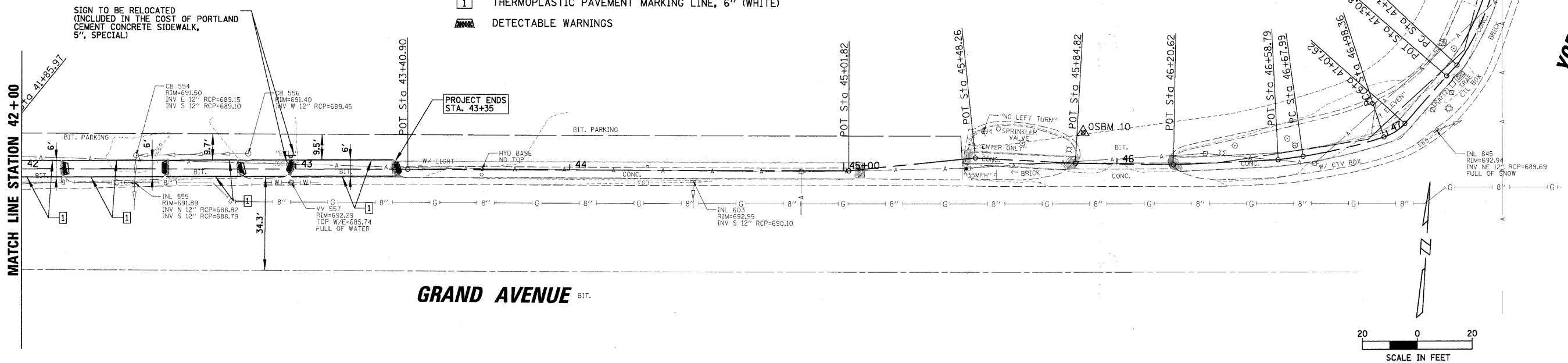



| | | | |
|-----------|--------------------|----|------|
| PLAN | SURVEYED | BY | DATE |
| NOTE BOOK | ALIGNMENT CHECKED | | |
| NO. | RT. OF WAY CHECKED | | |
| | FILE NAME | | |

| | | | |
|-----------|--------------------------|----|------|
| PROFILE | SURVEYED | BY | DATE |
| NOTE BOOK | GRADES CHECKED | | |
| NO. | STRUCTURE NOTATIONS CHKD | | |

LEGEND

-  COMBINATION CONCRETE CURB AND GUTTER REMOVAL AND REPLACEMENT
-  STRUCTURE TO BE ADJUSTED
-  THERMOPLASTIC PAVEMENT MARKING LINE, 6" (WHITE)
-  DETECTABLE WARNINGS



| | | | | | | | | | | | | |
|---|----------------------|------------|--|---|--|---------------------|--------------|--------------------|------------------------|---------------|-----------------|--------------|
| FILE NAME = N:\SENSEVILLE\080859\Cv1\RP7.dgn | USER NAME = MAGOLDEN | DESIGNED - | REVISED -  ADDENDUM 1 - 8/27/09 | STATE OF ILLINOIS DEPARTMENT OF TRANSPORTATION | SIDEWALK PLAN AND PROFILE | | | F.A.U. R.T.E. 1376 | SECTION 08-00086-00-SW | COUNTY DUPAGE | TOTAL SHEETS 41 | SHEET NO. 17 |
| PLOT SCALE = 20' | | DRAWN - | REVISED - | | SCALE: 20' | SHEET NO. OF SHEETS | STA. TO STA. | CONTRACT NO. 63187 | | | | |
| PLOT DATE = 12/14/2009 | | CHECKED - | REVISED - | | ILLINOIS FED. AID PROJECT CMM-9003 (053) | | | | | | | |
| | | DATE - | REVISED - | | | | | | | | | |