

**PROP. CURVE DRTC20**  
 PI STA. = 144+10.01  
 $\Delta = 35^\circ 51' 38''$  (RT)  
 $D = 17^\circ 37' 46''$   
 $R = 325.00'$   
 $T = 105.16'$   
 $L = 203.41'$   
 $E = 16.59'$   
 $e = NA$   
 $T.R. = NA$   
 $S.E. RUN = NA$   
 $P.C. STA. = 143+04.85$   
 $P.T. STA. = 145+08.26$

**PROP. CURVE DRTC21**  
 PI STA. = 145+73.70  
 $\Delta = 24^\circ 02' 24''$  (LT)  
 $D = 28^\circ 38' 52''$   
 $R = 200.00'$   
 $T = 42.58'$   
 $L = 83.92'$   
 $E = 4.48'$   
 $e = NA$   
 $T.R. = NA$   
 $S.E. RUN = NA$   
 $P.C. STA. = 145+31.12$   
 $P.T. STA. = 146+15.04$

**NOTES:**  
 1. ALL TREE LOCATIONS ARE APPROXIMATE.  
 2. ALL TREES SHOWN ON THE PLANS SHALL RECEIVE TREE TRUNK PROTECTION AND TREE ROOT PRUNING.

**PROP. CURVE C029**  
 PI STA. = 155+02.71  
 $\Delta = 35^\circ 51' 18''$  (LT)  
 $D = 17^\circ 54' 18''$   
 $R = 320.00'$   
 $T = 103.53'$   
 $L = 200.25'$   
 $E = 16.33'$   
 $e = NA$   
 $T.R. = NA$   
 $S.E. RUN = NA$   
 $P.C. STA. = 153+99.18$   
 $P.T. STA. = 155+99.43$

**PROP. CURVE C030**  
 PI STA. = 156+40.76  
 $\Delta = 61^\circ 06' 55''$  (RT)  
 $D = 81^\circ 51' 04''$   
 $R = 70.00'$   
 $T = 41.33'$   
 $L = 74.67'$   
 $E = 11.29'$   
 $e = NA$   
 $T.R. = NA$   
 $S.E. RUN = NA$   
 $P.C. STA. = 155+99.43$   
 $P.T. STA. = 156+74.10$

**PROP. CURVE C031**  
 PI STA. = 157+92.34  
 $\Delta = 4^\circ 20' 59''$  (RT)  
 $D = 19^\circ 05' 55''$   
 $R = 300.00'$   
 $T = 11.39'$   
 $L = 22.77'$   
 $E = 0.22'$   
 $e = NA$   
 $T.R. = NA$   
 $S.E. RUN = NA$   
 $P.C. STA. = 157+80.95$   
 $P.T. STA. = 158+03.72$

**PROP. CURVE C032**  
 PI STA. = 159+20.02  
 $\Delta = 7^\circ 36' 16''$  (LT)  
 $D = 3^\circ 16' 27''$   
 $R = 1,750.00'$   
 $T = 116.30'$   
 $L = 232.26'$   
 $E = 3.86'$   
 $e = NA$   
 $T.R. = NA$   
 $S.E. RUN = NA$   
 $P.C. STA. = 158+03.72$   
 $P.T. STA. = 160+35.98$

**PROP. CURVE C022**  
 PI STA. = 147+22.98  
 $\Delta = 10^\circ 49' 26''$  (RT)  
 $D = 19^\circ 05' 55''$   
 $R = 300.00'$   
 $T = 28.42'$   
 $L = 56.67'$   
 $E = 1.34'$   
 $e = NA$   
 $T.R. = NA$   
 $S.E. RUN = NA$   
 $P.C. STA. = 146+94.56$   
 $P.T. STA. = 147+51.24$

**PROP. CURVE C023**  
 PI STA. = 147+84.26  
 $\Delta = 4^\circ 18' 08''$  (LT)  
 $D = 19^\circ 05' 55''$   
 $R = 300.00'$   
 $T = 11.27'$   
 $L = 22.53'$   
 $E = 0.21'$   
 $e = NA$   
 $T.R. = NA$   
 $S.E. RUN = NA$   
 $P.C. STA. = 147+72.99$   
 $P.T. STA. = 147+95.51$

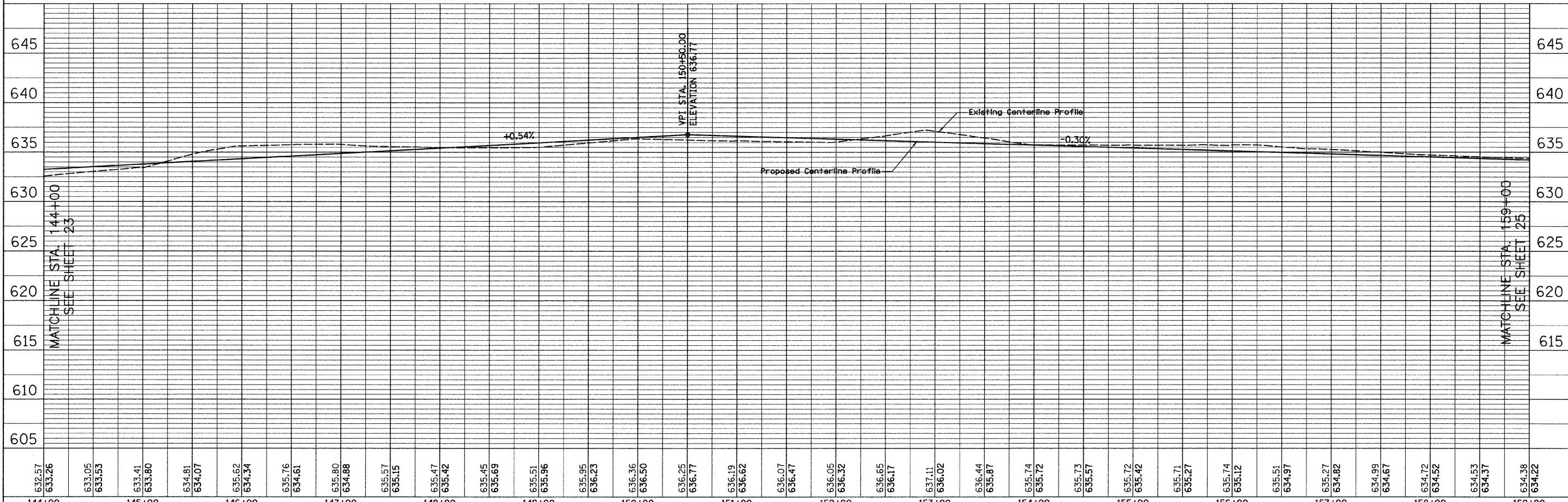
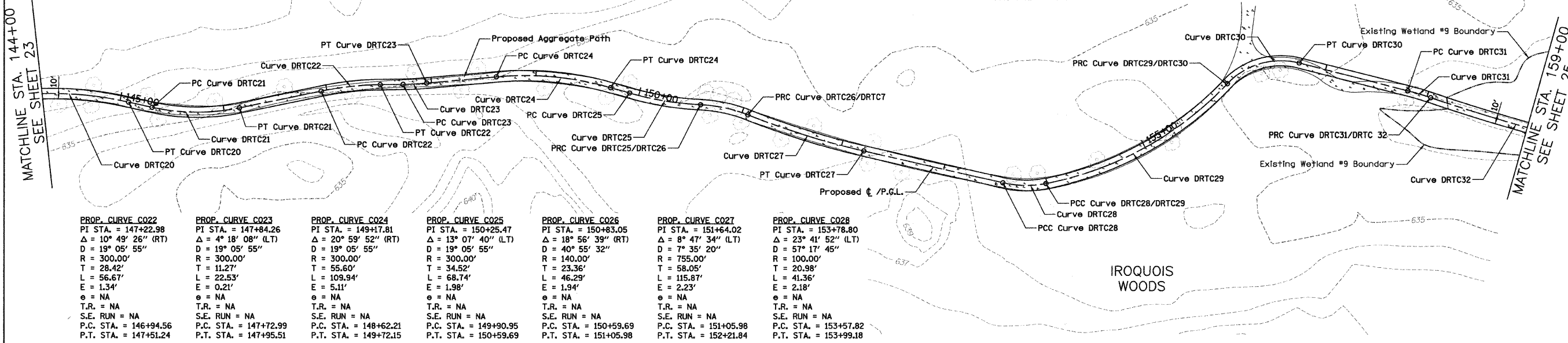
**PROP. CURVE C024**  
 PI STA. = 149+17.81  
 $\Delta = 20^\circ 59' 52''$  (RT)  
 $D = 19^\circ 05' 55''$   
 $R = 300.00'$   
 $T = 55.60'$   
 $L = 109.94'$   
 $E = 5.11'$   
 $e = NA$   
 $T.R. = NA$   
 $S.E. RUN = NA$   
 $P.C. STA. = 148+62.21$   
 $P.T. STA. = 149+72.15$

**PROP. CURVE C025**  
 PI STA. = 150+25.47  
 $\Delta = 13^\circ 07' 40''$  (LT)  
 $D = 19^\circ 05' 55''$   
 $R = 300.00'$   
 $T = 34.52'$   
 $L = 68.74'$   
 $E = 1.98'$   
 $e = NA$   
 $T.R. = NA$   
 $S.E. RUN = NA$   
 $P.C. STA. = 149+90.95$   
 $P.T. STA. = 150+59.69$

**PROP. CURVE C026**  
 PI STA. = 150+83.05  
 $\Delta = 18^\circ 58' 39''$  (RT)  
 $D = 40^\circ 55' 32''$   
 $R = 140.00'$   
 $T = 23.36'$   
 $L = 46.29'$   
 $E = 1.94'$   
 $e = NA$   
 $T.R. = NA$   
 $S.E. RUN = NA$   
 $P.C. STA. = 150+59.69$   
 $P.T. STA. = 151+05.98$

**PROP. CURVE C027**  
 PI STA. = 151+64.02  
 $\Delta = 8^\circ 47' 34''$  (LT)  
 $D = 7^\circ 35' 20''$   
 $R = 755.00'$   
 $T = 58.05'$   
 $L = 115.87'$   
 $E = 2.23'$   
 $e = NA$   
 $T.R. = NA$   
 $S.E. RUN = NA$   
 $P.C. STA. = 151+05.98$   
 $P.T. STA. = 152+21.84$

**PROP. CURVE C028**  
 PI STA. = 153+78.80  
 $\Delta = 23^\circ 41' 52''$  (LT)  
 $D = 57^\circ 17' 45''$   
 $R = 100.00'$   
 $T = 20.98'$   
 $L = 41.36'$   
 $E = 2.18'$   
 $e = NA$   
 $T.R. = NA$   
 $S.E. RUN = NA$   
 $P.C. STA. = 153+57.82$   
 $P.T. STA. = 153+99.18$



FILE NAME = D:\2173-shr-plnpr\184.dgn	USER NAME = CEI.User	DESIGNED - RJD/BJB	REVISED -	<b>STATE OF ILLINOIS</b> <b>DEPARTMENT OF TRANSPORTATION</b>	<b>DES PLAINES RIVER TRAIL IMPROVEMENTS</b> <b>PLAN AND PROFILE</b>	F.A. RTE.	SECTION	COUNTY	TOTAL SHEET NO.
PLOT SCALE = 58.0000' / IN.	CHECKED - MJF	REVISIED -	08-00202-00-5W			COOK	118	24	
PLOT DATE = 5/26/2009	DATE - 5/28/09	REVISIED -	CONTRACT NO. 63188						
			SCALE: 1"=50'H 1"=5'V SHEET NO. 4 OF 13 SHEETS STA. 144+00 TO STA. 159+00						
						FED. ROAD DIST. NO. ILLINOIS FED. AID PROJECT: CMM-9003(116)			

PLAN  
 CHECKED BY: [ ]  
 DATE: [ ]

PROFILE  
 CHECKED BY: [ ]  
 DATE: [ ]