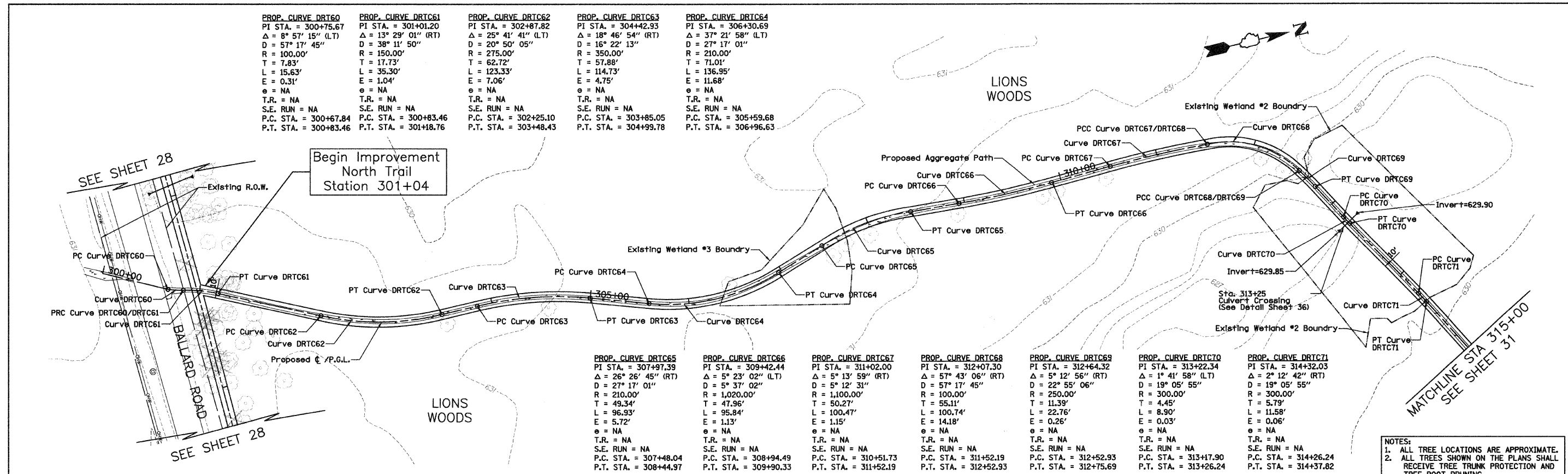


PLAN	SURVEYED	DATE
	PLOTTED	
	CHECKED	
	BY	
	NO. OF WAY CHECKED	
	CADD FILE NAME	
	NO.	

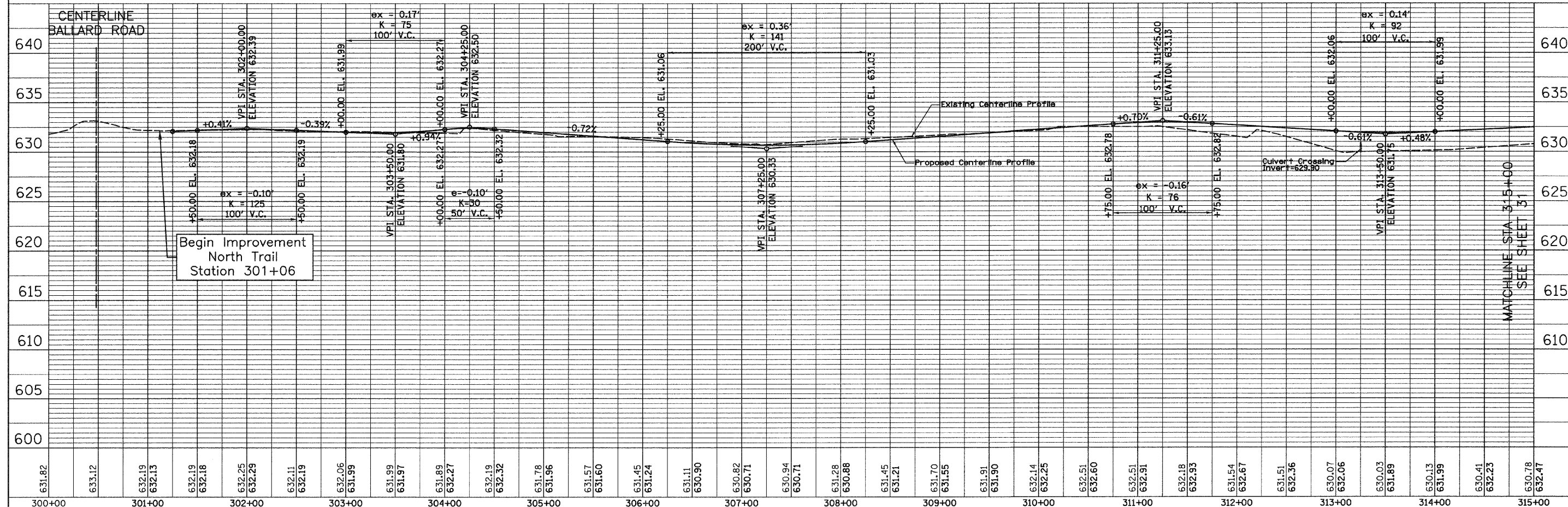
PROFILE	SURVEYED	DATE
	PLOTTED	
	CHECKED	
	BY	
	NO. OF WAY CHECKED	
	STRUCTURE NOTATION/DK/DK	
	NO.	

PROP. CURVE DRT60 PI STA. = 300+75.67 Δ = 8° 57' 15" (LT) D = 57° 17' 45" R = 100.00' T = 7.83' L = 15.63' E = 0.31' e = NA T.R. = NA S.E. RUN = NA P.C. STA. = 300+67.84 P.T. STA. = 300+83.46	PROP. CURVE DRT61 PI STA. = 301+01.20 Δ = 13° 29' 01" (RT) D = 38° 11' 50" R = 150.00' T = 17.73' L = 35.30' E = 1.04' e = NA T.R. = NA S.E. RUN = NA P.C. STA. = 300+83.46 P.T. STA. = 301+18.76	PROP. CURVE DRT62 PI STA. = 302+87.82 Δ = 25° 41' 41" (LT) D = 20° 50' 05" R = 275.00' T = 62.72' L = 123.33' E = 7.06' e = NA T.R. = NA S.E. RUN = NA P.C. STA. = 302+25.10 P.T. STA. = 303+48.43	PROP. CURVE DRT63 PI STA. = 304+42.93 Δ = 18° 46' 54" (RT) D = 16° 22' 13" R = 350.00' T = 57.88' L = 114.73' E = 4.75' e = NA T.R. = NA S.E. RUN = NA P.C. STA. = 303+85.05 P.T. STA. = 304+99.78	PROP. CURVE DRT64 PI STA. = 306+30.69 Δ = 37° 21' 58" (LT) D = 27° 17' 01" R = 210.00' T = 71.01' L = 136.95' E = 11.68' e = NA T.R. = NA S.E. RUN = NA P.C. STA. = 305+59.68 P.T. STA. = 306+96.63
---	---	--	--	---



PROP. CURVE DRT65 PI STA. = 307+97.39 Δ = 26° 26' 45" (RT) D = 27° 17' 01" R = 210.00' T = 49.34' L = 96.93' E = 5.72' e = NA T.R. = NA S.E. RUN = NA P.C. STA. = 307+48.04 P.T. STA. = 308+44.97	PROP. CURVE DRT66 PI STA. = 309+42.44 Δ = 5° 23' 02" (LT) D = 5° 37' 02" R = 1,020.00' T = 47.96' L = 95.84' E = 1.13' e = NA T.R. = NA S.E. RUN = NA P.C. STA. = 308+94.49 P.T. STA. = 309+90.33	PROP. CURVE DRT67 PI STA. = 311+02.00 Δ = 5° 13' 59" (RT) D = 5° 12' 31" R = 1,100.00' T = 50.27' L = 100.47' E = 1.15' e = NA T.R. = NA S.E. RUN = NA P.C. STA. = 310+51.73 P.T. STA. = 311+52.19	PROP. CURVE DRT68 PI STA. = 312+07.30 Δ = 57° 43' 06" (RT) D = 57° 17' 45" R = 100.00' T = 55.11' L = 100.74' E = 14.18' e = NA T.R. = NA S.E. RUN = NA P.C. STA. = 311+52.19 P.T. STA. = 312+52.93	PROP. CURVE DRT69 PI STA. = 312+64.32 Δ = 5° 12' 56" (LT) D = 22° 55' 06" R = 250.00' T = 11.39' L = 22.76' E = 0.26' e = NA T.R. = NA S.E. RUN = NA P.C. STA. = 312+52.93 P.T. STA. = 312+75.69	PROP. CURVE DRT70 PI STA. = 313+22.34 Δ = 1° 41' 58" (LT) D = 19° 05' 55" R = 300.00' T = 4.45' L = 8.90' E = 0.03' e = NA T.R. = NA S.E. RUN = NA P.C. STA. = 313+17.90 P.T. STA. = 313+26.24	PROP. CURVE DRT71 PI STA. = 314+32.03 Δ = 2° 12' 42" (RT) D = 19° 05' 55" R = 300.00' T = 5.79' L = 11.58' E = 0.06' e = NA T.R. = NA S.E. RUN = NA P.C. STA. = 314+26.24 P.T. STA. = 314+37.82
---	---	--	---	--	--	---

NOTES:
1. ALL TREE LOCATIONS ARE APPROXIMATE.
2. ALL TREES SHOWN ON THE PLANS SHALL RECEIVE TREE TRUNK PROTECTION AND TREE ROOT PRUNING.



FILE NAME = D1-2173-ahp-p1nprf18.dgn	USER NAME = CE1User	DESIGNED - RJD/BJB	REVISED -	STATE OF ILLINOIS DEPARTMENT OF TRANSPORTATION	DES PLAINES RIVER TRAIL IMPROVEMENTS PLAN AND PROFILE	F.A. RTE.	SECTION	COUNTY	TOTAL SHEETS	SHEET NO.
PLOT SCALE = 50.0000' / IN.	CHECKED - MJF	REVISED -	08-00202-00-SW			COOK	118	30		
PLOT DATE = 5/28/09	DATE - 5/28/09	REVISED -	CONTRACT NO. 63188							
			FED. ROAD DIST. NO. ILLINOIS FED. AID PROJECT: CMM-9003(116)							