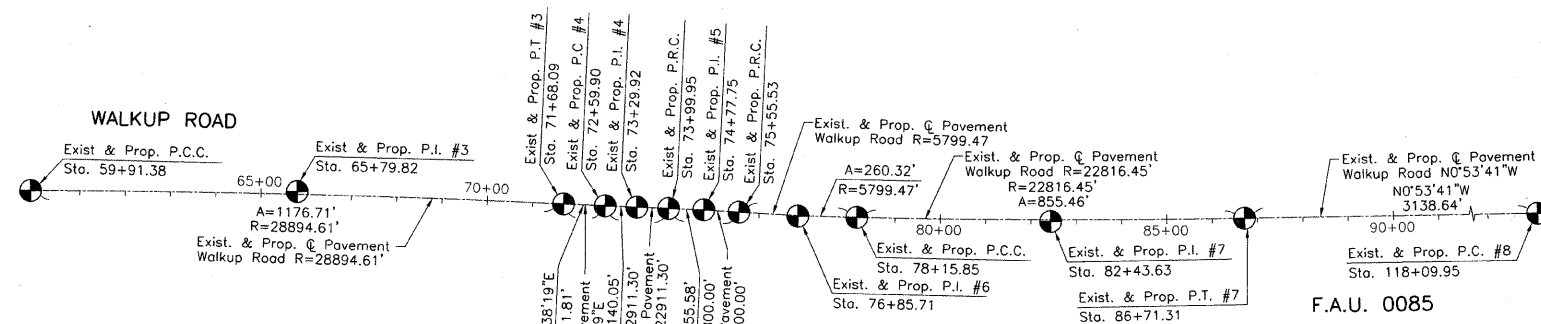
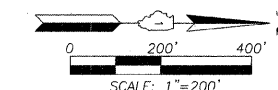
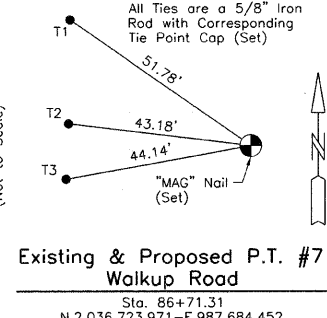
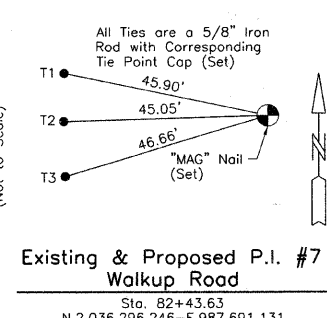
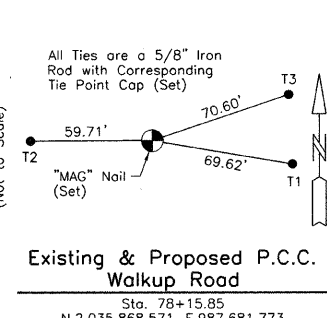
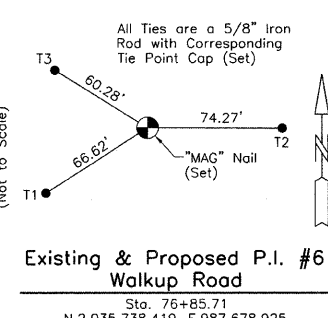
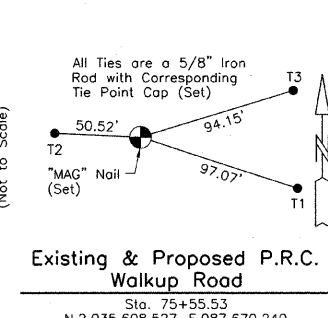
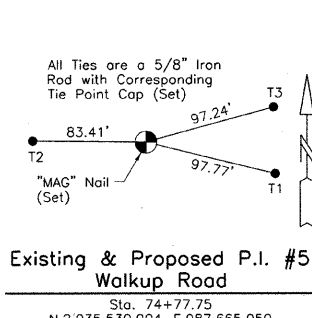
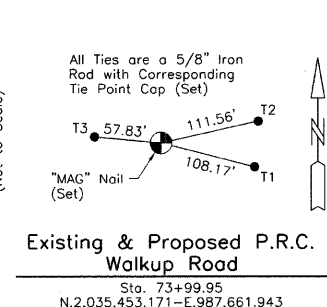
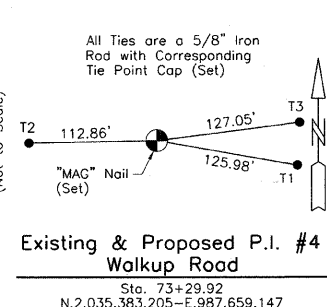
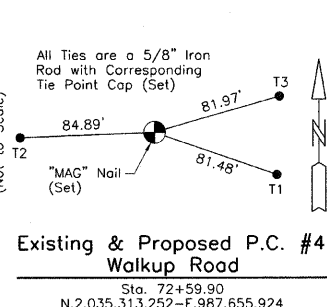
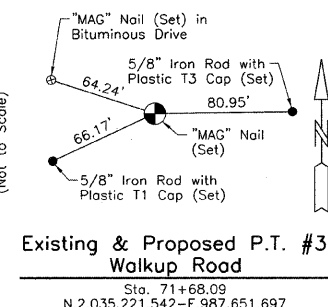
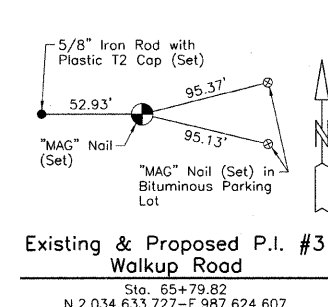
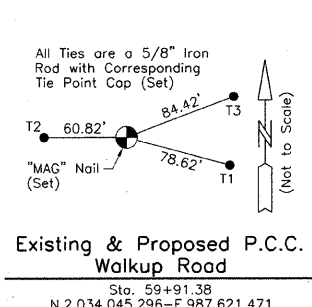


F.A.U. RTE.	SECTION	COUNTY	TOTAL SHEETS	SHEET NO.
0085	00-00246-01-FP	MCHENRY	236	21
STA. 59+91.38		TO STA. 118+09.95		
FED. ROAD DIST. NO. 1 ILLINOIS		FED. AID PROJECT		
CONTRACT NO: 63266				



SEE SHEET 22



Existing & Proposed Pavement Walkup Road Curve #3

P.I.	= Sta. 65+79.82
Δ	= 2'20"00"
R	= 28894.61'
T	= 588.44'
L	= 1176.71'
E	= 5.99'
P.C.C.	= Sta. 59+91.38
P.T.	= Sta. 71+68.09

Existing & Proposed Pavement Walkup Road Curve #4

P.I.	= Sta. 73+29.92
Δ	= 0'21"01"
R	= 22911.30'
T	= 70.02'
L	= 140.05'
E	= 0.11'
P.C.	= Sta. 72+59.90
P.R.C.	= Sta. 73+99.95

Existing & Proposed Pavement Walkup Road Curve #5

P.I.	= Sta. 74+77.75
Δ	= 1'32"13"
R	= 5800.00'
T	= 77.80'
L	= 155.58'
E	= 0.52'
P.R.C.	= Sta. 73+99.95
P.R.C.	= Sta. 75+55.53

Existing & Proposed Pavement Walkup Road Curve #6

P.I.	= Sta. 76+85.71
Δ	= 2'34"19"
R	= 5799.47'
T	= 130.18'
L	= 260.32'
E	= 1.46'
P.R.C.	= Sta. 75+55.53
P.C.C.	= Sta. 78+15.85

Existing & Proposed Pavement Walkup Road Curve #7

P.I.	= Sta. 82+43.63
Δ	= 2'08"54"
R	= 22816.45'
T	= 427.78'
L	= 855.46'
E	= 4.01'
P.C.C.	= Sta. 78+15.85
P.T.	= Sta. 86+71.31



*Christian H. Jorgensen* 7/14/09  
PRESIDENT  
ILLINOIS PROFESSIONAL LAND SURVEYOR NO. 35-2797  
LICENSE EXPIRATION DATE: NOVEMBER 30, 2010

REVISIONS	
NAME	DATE

MCHENRY COUNTY DIVISION OF TRANSPORTATION  
WALKUP ROAD F.A.U. 0085

ALIGNMENT AND TIES

SCALE: 1"=200'  
DATE: July 14, 2009  
DRAWN BY: KIK  
CHECKED BY: CHJ  
JORGENSEN & ASSOCIATES, INC. 120 PARK AVENUE  
(847) 356-3371 LAKE VILLA, ILLINOIS 60046