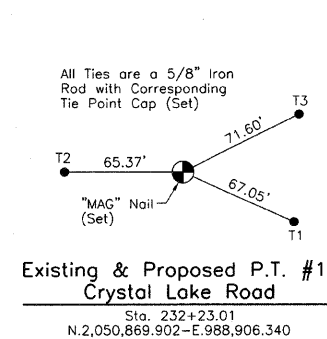
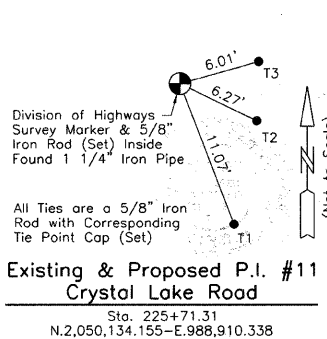
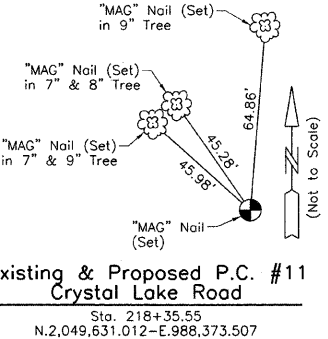
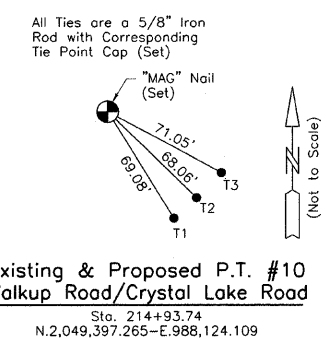
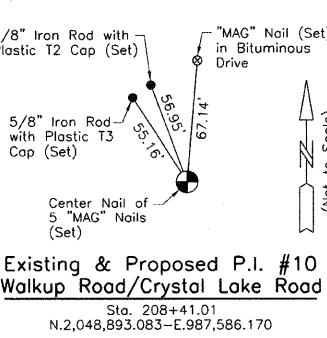
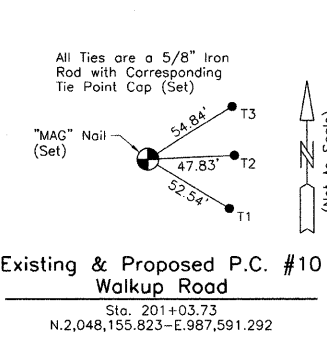
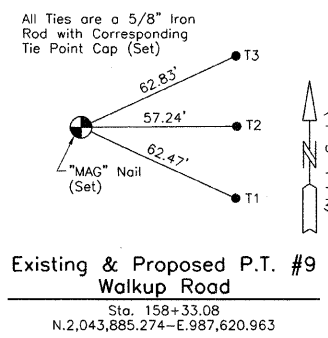
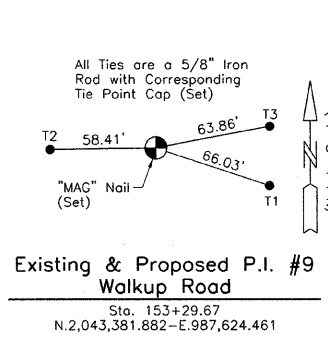
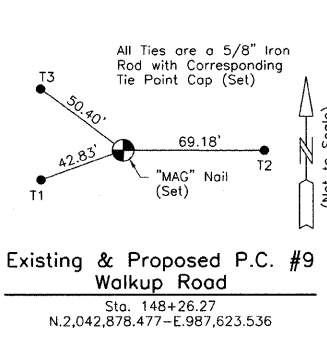
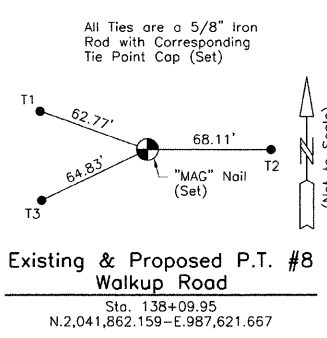
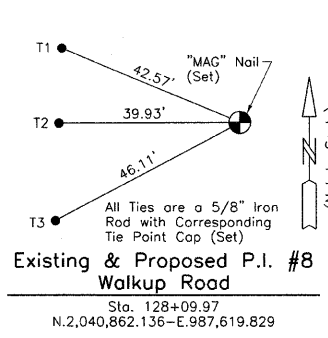
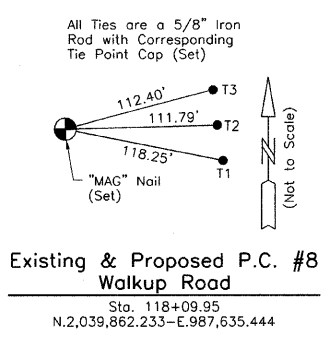
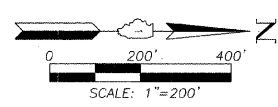
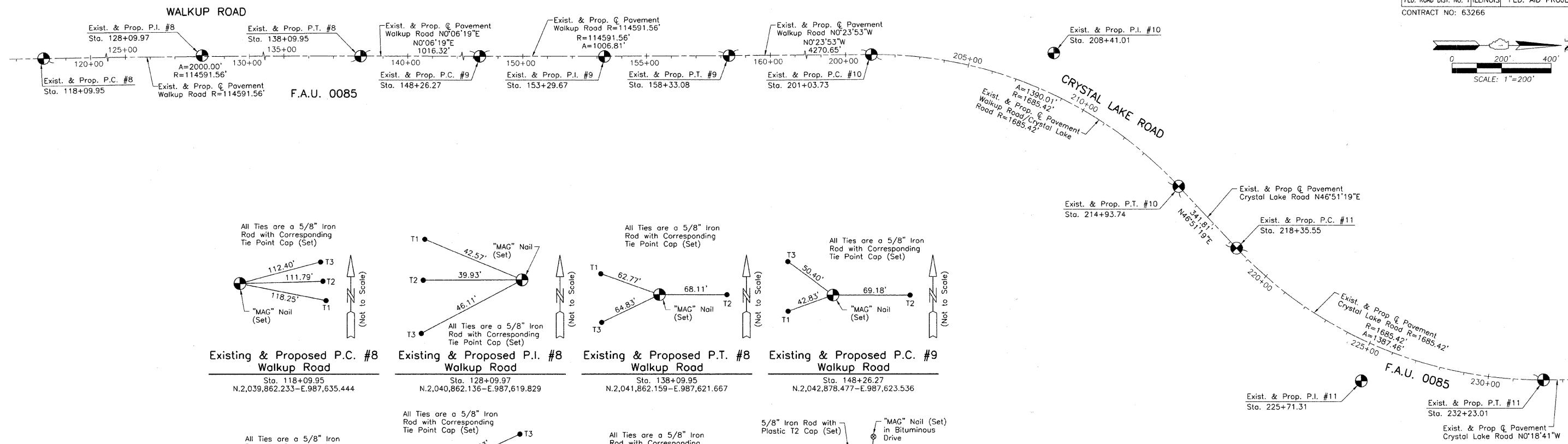


F.A.U. RTE.	SECTION	COUNTY	TOTAL SHEETS	SHEET NO.
0085	00-00246-01-FP	MCHENRY	236	22
STA. 117+00 TO STA. 233+00		FED. ROAD DIST. NO. 1 ILLINOIS FED. AID PROJECT		
CONTRACT NO: 63266				

SEE SHEET 21



Existing & Proposed C Pavement Walkup Road Curve #8

P.I.	= Sta. 128+09.97
Δ	= 1'00'00"
R	= 114591.56'
T	= 1000.02'
L	= 2000.00'
E	= 4.36'
P.C.	= Sta. 118+09.95
P.T.	= Sta. 138+09.95

Existing & Proposed C Pavement Walkup Road Curve #9

P.I.	= Sta. 153+29.67
Δ	= 0'30'12"
R	= 114591.56'
T	= 503.40'
L	= 1006.81'
E	= 1.11'
P.C.	= Sta. 148+26.27
P.T.	= Sta. 158+33.08

Existing & Proposed C Pavement Walkup Road/Crystal Lake Road Curve #10

P.I.	= Sta. 208+41.01
Δ	= 47'15'12"
R	= 1685.42'
T	= 737.28'
L	= 1390.01'
E	= 154.20'
P.C.	= Sta. 201+03.73
P.T.	= Sta. 214+93.74

Existing & Proposed C Pavement Crystal Lake Road Curve #11

P.I.	= Sta. 225+71.31
Δ	= 47'10'00"
R	= 1685.42'
T	= 735.76'
L	= 1387.46'
E	= 153.60'
P.C.	= Sta. 218+35.55
P.T.	= Sta. 232+23.01



Christian H. Jorgensen 7/14/09
PRESIDENT
ILLINOIS PROFESSIONAL LAND SURVEYOR NO. 35-2797
LICENSE EXPIRATION DATE: NOVEMBER 30, 2010

REVISIONS	
NAME	DATE

MCHENRY COUNTY DIVISION OF TRANSPORTATION
WALKUP ROAD F.A.U. 0085

ALIGNMENT AND TIES

SCALE: 1"=200'
DATE: July 14, 2009
DRAWN BY: KLK
CHECKED BY: CHJ
JORGENSEN & ASSOCIATES, INC. 120 PARK AVENUE
(847) 356-3371 LAKE VILLA, ILLINOIS 60046