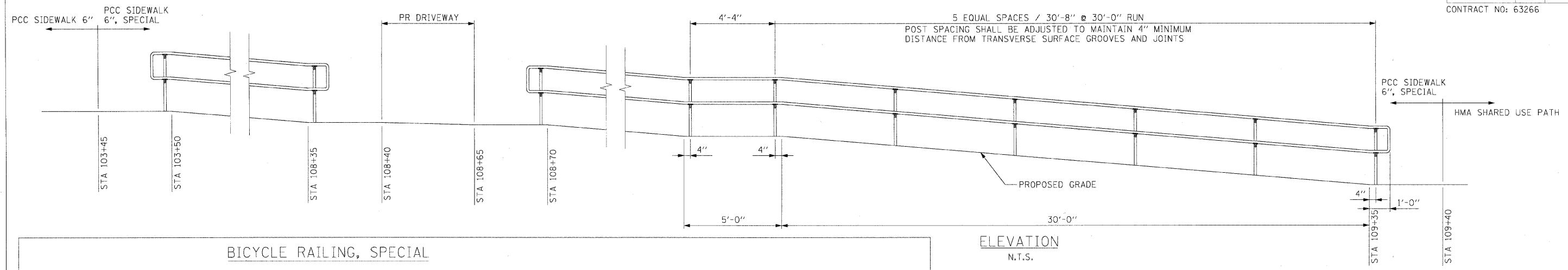
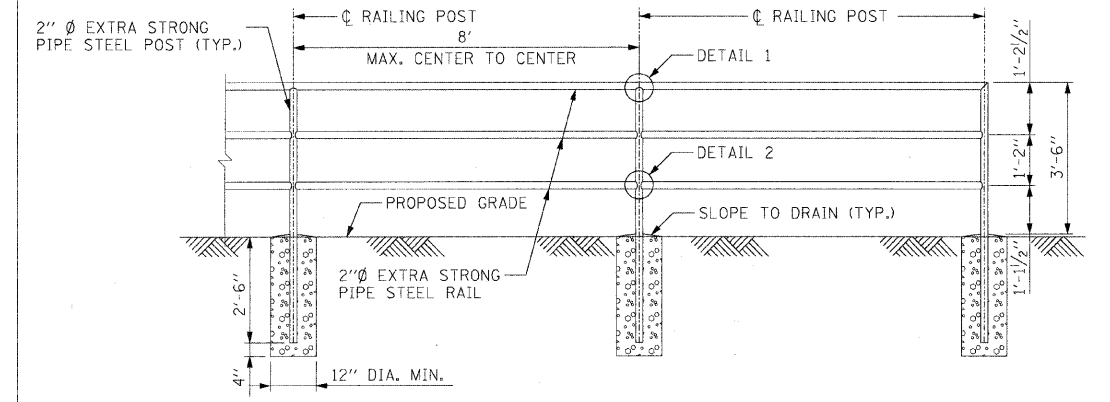


PIPE HANDRAIL, SPECIAL

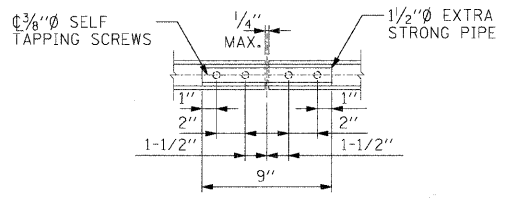


ELEVATION  
N.T.S.

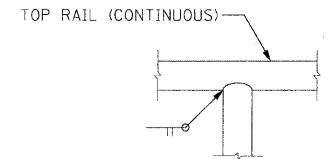
BICYCLE RAILING, SPECIAL



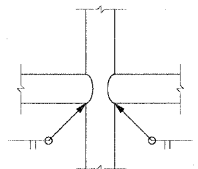
ELEVATION  
N.T.S.



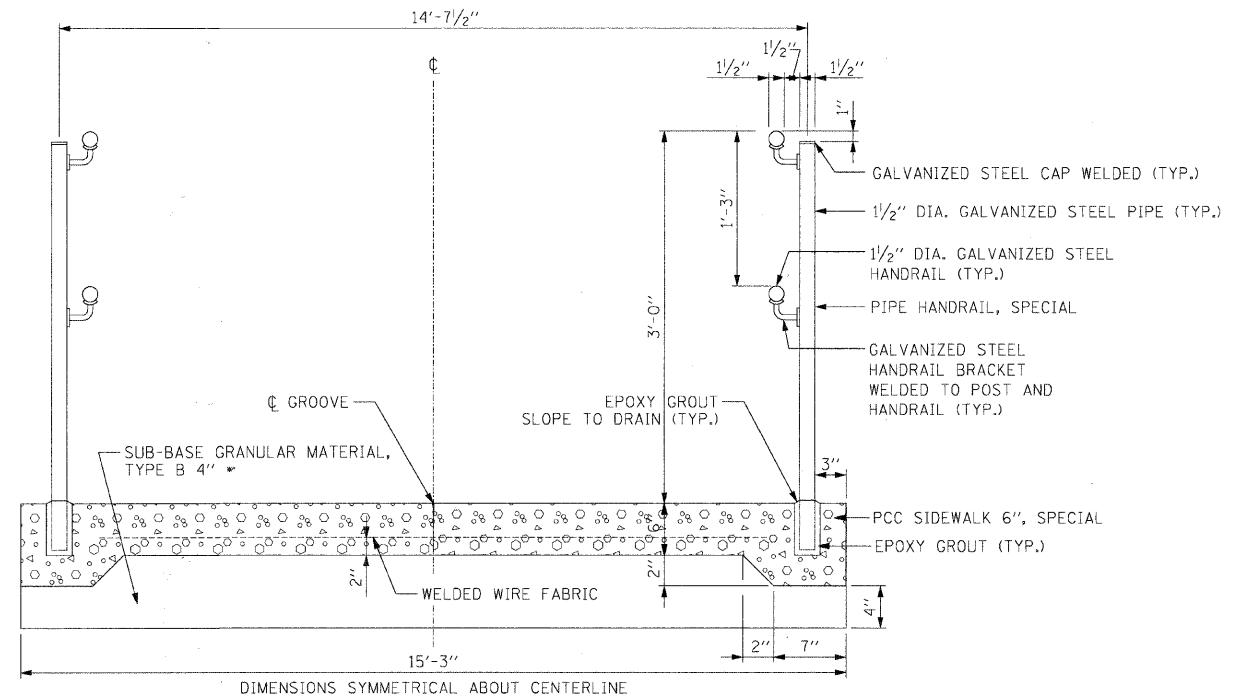
RAIL SPLICE DETAIL



DETAIL 1



DETAIL 2

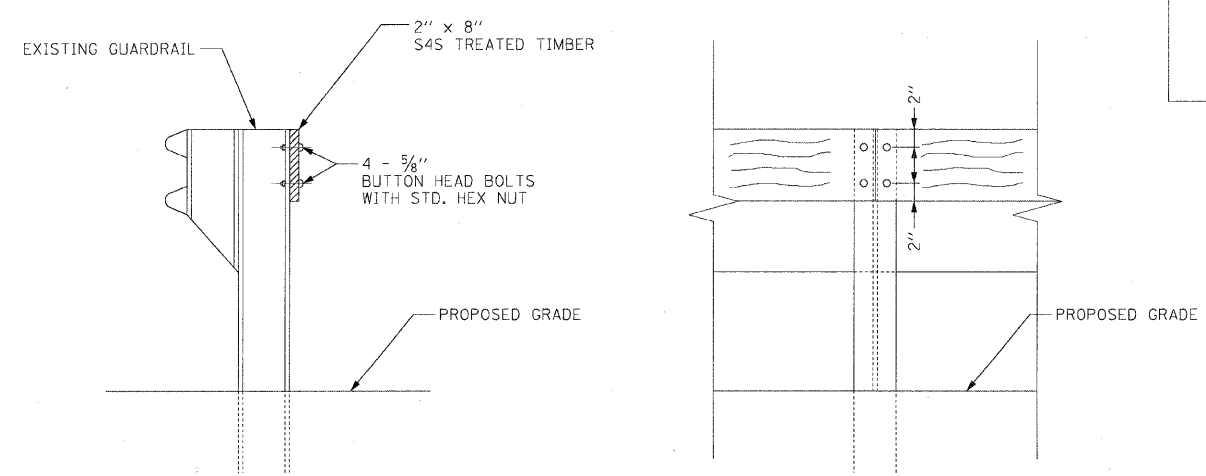


PCC SIDEWALK 6 INCH, SPECIAL SECTION  
N.T.S.

STA 103+45 TO STA 108+40  
STA 108+65 TO STA 109+40

\* THE COST OF THE WORK TO PLACE THE ADDITIONAL 2" DEPTH OF SUB-BASE GRANULAR MATERIAL, TYPE B UNDER THE PCC SIDEWALK 6" SPECIAL WILL NOT BE PAID FOR SEPARATELY, BUT SHALL BE INCLUDED IN THE CONTRACT UNIT PRICE FOR SUB-BASE GRANULAR MATERIAL, TYPE B 4".

PROTECTION OF BACKSIDE OF GUARDRAIL



SECTION  
N.T.S.

APPROX. STA 122+34 TO STA 127+24

ELEVATION  
(BIKE PATH SIDE)  
N.T.S.

BICYCLE RAILING, SPECIAL AND PIPE HANDRAIL, SPECIAL NOTES:

1. THE CONTRACTOR SHALL INCLUDE RAIL SPLICE CONNECTION DETAILS WITH SHOP DRAWING SUBMITTALS.
2. RAILING SHALL BE IN ACCORDANCE WITH SECTION 509 OF THE STANDARD SPECIFICATIONS EXCEPT AS NOTED.
3. ALL POSTS, RAILINGS, SPLICES, ANCHOR DEVICES, AND PLATES SHALL BE GALVANIZED AFTER SHOP FABRICATION ACCORDING TO AASHTO M-111. ALL BOLTS, NUTS, AND WASHERS SHALL BE GALVANIZED ACCORDING TO AASHTO M-232 EXCEPT STAINLESS STEEL HARDWARE SHALL BE UNCOATED.
4. VENT HOLES FOR GALVANIZING SHALL BE PLACED IN THE POSTS AND RAILS AT LOCATIONS THAT WILL NOT ALLOW FOR THE ACCUMULATION OF MOISTURE IN THE MEMBERS.
5. RAIL TO MATCH PROFILE.

REVISIONS	
NAME	DATE

MCHENRY COUNTY DIVISION OF TRANSPORTATION  
WALKUP ROAD F.A.U. 0085

SHARED USE PATH  
SPECIAL DETAILS

SCALE: N.T.S.  
DATE: 08/17/09  
DRAWN BY: RJS  
CHECKED BY: MCD

**TENG**  
TENG & ASSOCIATES, INC.  
ENGINEERS/ARCHITECTS/PLANNERS  
205 N. MICHIGAN AVE. CHICAGO, IL 60601  
TELEPHONE: 312/616-9000

:N:\SC008R\LDON\_ATT\TERRY V.DGN  
 8-14-2009 4:45:02  
 I:\DOCUMENT\930003\CIVIL\DON\DET00\_3.DGN  
 1 2 3 4 5 6 7 8 9 10 11 12 13 14 15 16 17 18 19 20 21 22 23 24 25 26 27 28 29 30 31 32 33 34 35 36 37 38 39 40 41 42 43 44 45 46 47 48 49 50 51 52 53 54 55 56 57 58 59 60 61 62 63