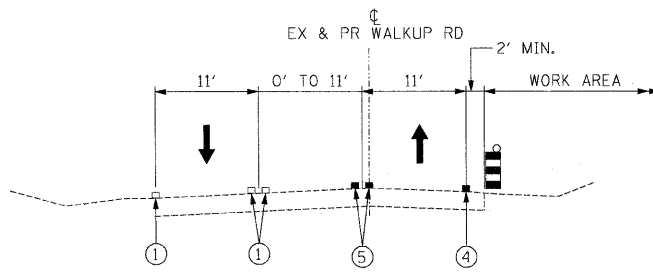
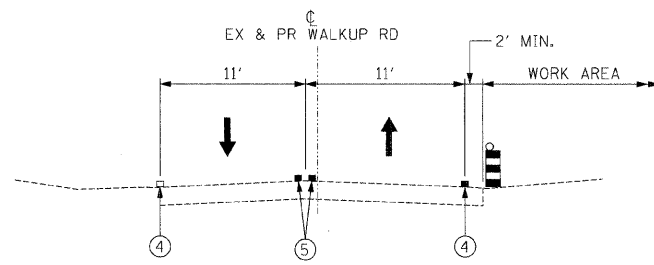


F.A.U. RTE.	SECTION	COUNTY	TOTAL SHEETS	SHEET NO.
0085	00-00246-01-FP	MCHENRY	236	48
STA.		TO STA.		
FED. ROAD DIST. NO. 1		ILLINOIS FED. AID PROJECT		
CONTRACT NO: 63266				



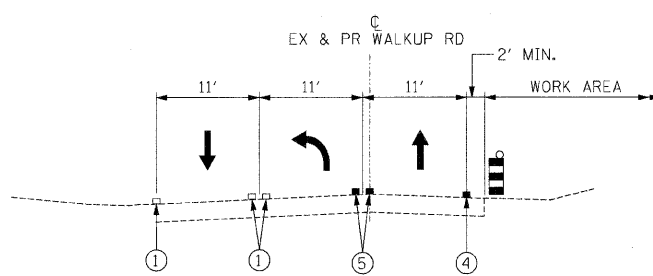
MOT TYPICAL SECTION

STAGE 1
 STA 202+00.00 TO STA 206+43.02
 STA 208+49.26 TO STA 211+43.26



MOT TYPICAL SECTION

STAGE 1
 STA 211+43.26 TO STA 227+00



MOT TYPICAL SECTION

STAGE 1
 STA 206+43.02 TO STA 207+94.76

LEGEND:

- VERTICAL PANEL W/BI-DIRECTIONAL STEADY BURNING LIGHT
- DRUM W/BI-DIRECTIONAL STEADY BURNING LIGHT
- DIRECTION OF TRAFFIC
- ① EXISTING PAVEMENT MARKING
- ② TEMPORARY PAVEMENT
- ③ TEMPORARY AGGREGATE SHOULDER
- ④ TEMPORARY PAVEMENT MARKING - 4" (WHITE)
- ⑤ TEMPORARY PAVEMENT MARKING - 4" (YELLOW)
- ⑥ PROPOSED PAVEMENT MARKING

REVISIONS	
NAME	DATE

MCHENRY COUNTY DIVISION OF TRANSPORTATION
 WALKUP ROAD F.A.U. 0085

**MAINTENANCE OF TRAFFIC
 TYPICAL SECTIONS
 STAGE 1**

SCALE: N.T.S. DRAWN BY: BRH
 DATE: 08/17/09 CHECKED BY: KA

TENG
 TENG & ASSOCIATES, INC.
 ENGINEERS/ARCHITECTS/PLANNERS
 205 N. MICHIGAN AVE., CHICAGO, IL 60601
 TELEPHONE: 312/616-9000

I:\DOCUMENT\9320003\CIVIL\ADMIN\0045\UDON B 4 2003 44502 1 2 3 4 5 6 7 8 9 10 11 12 13 14 15 16 17 18 19 20 21 22 23 24 25 26 27 28 29 30 31 32 33 34 35 36 37 38 39 40 41 42 43 44 45 46 47 48 49 50 51 52 53 54 55 56 57 58 59 60 61 62 63 STANKIRJ